

Kenton County School District | *It's about ALL kids.*

ISSUE PAPER

DATE:

June 27, 2026

AGENDA ITEM (ACTION ITEM):

Receive the 2027 KCS D Organizational Chart

APPLICABLE BOARD POLICY:

01.11 – Powers and Duties of the Board

HISTORY/BACKGROUND:

Annually, the superintendent presents the district organizational chart to the board of education. The 2027 organizational chart contains changes from the previous year.

FISCAL/BUDGETARY IMPACT:

None

RECOMMENDATION:

Receive the 2027 KCS D Organizational Chart

CONTACT PERSON:

Henry Webb

Principal/Administrator

District Administrator



Superintendent

*Use this form to submit your request to the Superintendent for items to be added to the Board Meeting Agenda.
Principal –complete, print, sign and send to your Director. Director –if approved, sign and put in the Superintendent's mailbox.*

Kenton County School District 2026-27

Kenton County Board of Education

Jesica Jehn, Chairperson;
 Karen Collins, Vice-Chairperson;
 Shannon Herold, Erin McConnell and Brian Remole
 Board Counsel, Jeremy Deters

Dr. Henry Webb, Superintendent ^

Misty Jones, Administrative
 Assistant & Board Secretary
 Board Policies

Team Kenton

KIDS
 Community
 Parents
 Staff

Dr. Shawna Harney, Chief Academic Officer ^

Student Learning and Progress Pillar
 Kristi Mills, Administrative Assistant

Kristie Cahill
 Assistant
 Superintendent
 Teaching &
 Learning ^

Carrie Holloway
 Assistant
 Superintendent,
 Elementary ^

Jena Smiddy
 Assistant
 Superintendent,
 Middle ^

Lesley Smith
 Assistant
 Superintendent,
 High ^

Academic
 Program
 Consultants

ESS Coordinator

DAC, CDIP/CSIP,
 KC-NET

Student Readiness Pillar

Ellen Zimmer,
 Director of Early
 Childhood/Federal
 Programs

Elementary Principals

Grants

Student, Family and
 Community Engagement
 Pillar

Danielle Rice,
 Director of Special
 Education

Matt Moore,
 Director of
 Districtwide
 Programs

Amanda Dempsey
 Director of
 Districtwide
 Programs

Middle School
 Principals

Instructional
 Technology

Student Readiness Pillar

Caroline Capal
 Director of
 Districtwide
 Programs

Paula Rust, Director
 of Health
 Services/Healthy at
 Work Officer

Todd Dupin, Director
 of Pupil Personnel*

Amy Kennedy,
 Administrative
 Asst/Receptionist

High School Principals

Crisis Team

Safety and Well-Being
 Pillar

Matt Rigg, Chief Operations Officer ^

Safety and Well-Being Pillar
 Carrie Hooten, Operations Support Coordinator

Susan Bentle
 Executive Director,
 Finance ^

Fiscal/Operational Systems
 Pillar

Brian Vanover Assistant
 Superintendent,
 Operations^

Jim Hale,
 Director of
 Transportation

Jenny Notton
 Director of Student
 Nutrition

Matthew Winkler
 Director of Technology

Teal Nally,
 Safety Coordinator

Support Operations Team:
 Maintenance, Building
 Ops, Energy Systems,
 Purchasing, Construction

Fiscal/Operational Systems
 Pillar

Malina Basler
 Assistant
 Superintendent,
 Human Resources ^

Jess Dykes, Director
 of Public Information
 and Community
 Engagement

World Class Staff Pillar

^ Denotes Cabinet
 Position

* Hearing Officer

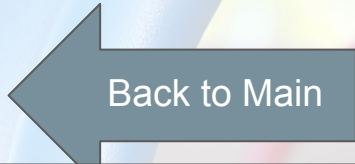




Matt Rigg
Chief Operations Officer

Malina Basler
Assistant Superintendent of HR
859-957-2686

KCSD Human Resources Team



Nicole Smith
Assistant Director of HR
859-957-2611

Dr. David Rust
Program Specialist:
Records Retention

<p>Peggy Beckerich HR Administrative Assistant</p>	<p>Keisha Mitts HR Coordinator Elementary Schools / Substitutes</p>	<p>Tara Bradford HR Coordinator Middle & High Schools / District Special Education & Academic Program Consultants</p>	<p>Brandy Young HR Coordinator Building Operations / Student Nutrition / Transportation / Finance / HR / Behavior Support / Health Services</p>
<p>859-957-2681</p> <p>Contact for Leave of Absence for employees requesting leave</p> <p>Verifications of employment</p> <p>Student Teacher and SBDM member criminal background checks and Child and Abuse Neglect (CAN) checks</p>	<p>859-957-2664</p> <p>HR point of contact for all employees and new hires of elementary schools and substitutes</p> <p>Manage the District's electronic Absence Management System</p> <p>New Hire Orientations</p>	<p>859-957-2646</p> <p>HR point of contact for all employees and new hires of Middle & High Schools</p> <p>Manage the District's electronic Employment Applications</p> <p>New Hire Orientations</p>	<p>859-957-2661</p> <p>HR point of contact for all employees and new hires of Building Operations / Student Nutrition / Transportation / Behavior Support / Health Services / HR / Finance / District Special Education / CO Staff/coaches</p> <p>Manage the District's electronic Evaluation Management System and train school personnel on efficient use of the system</p> <p>New Hire Orientations</p>



Malina Basler
Assistant Superintendent,
Human Resources

KCSD Communications Team

←
Back to Main

Jess Dykes
Director of Public Information &
Community Engagement
859-957-2620

Trina Edwards
Public Information Coordinator

859-957-2662

- Manages and updates district website
- Manages and updates district social media platforms
- Assists with district publications
- Writes and distributes press releases
- Takes photos at district and school events
- Assists in the planning and implementation of district events

Cris Kendall
Media Coordinator

859-957-0506

- Produces/directs/video records/edits all district videos
- Takes photos at school and district events
- Manages district YouTube channel
- Assists in the planning and implementation of district events



Matt Rigg
Chief Operations Officer

Susan Bentle
Executive Director of Finance
859-957-2628

KCSD Finance Team

Erin Harlow
Accounting Supervisor
859-957-2626

MUNIS Administrator, Payroll Administrator, Time & Attendance System Administrator, Retirement Systems Reporting

Katie Smith
Asst. Director of Finance
957-2658

Accounts Payable Manager, Invoice & Travel Payments, Procurement Card Manager, Fixed Asset/Follett System Manager, School Financial Reports, Financial Audit, 1099 Forms

Jenny Smith
Payroll/Benefits Supervisor
859-957-2639

Bi-Weekly Payroll Supervision, Benefits Open Enrollment/QE, Payroll Adjustments, KY Retirement Systems Reporting, Sections 125, 403b, 457 401K Plans, W-2 & ACA 1095 Forms, Payroll Audits & Reporting, AESOP File Processing, ESS Administrator

Grace Mason
Finance Bookkeeper

859-957-2690

- Grants Processing
- Grants Reporting
- Federal Health Insurance
- Fund 21/25 Transactions
- SBDM Budgeting
- Medicaid Reporting
- Receipts Deposit Processing

Cristy Richardson
Finance Bookkeeper

859-957-2685

- Fixed Asset Processing/Audits
- Follett System Support
- Receipts Trans Posting
- Accounts Payable Processing

Cheryl Winkle
Payroll/Benefits Specialist

859-957-2602

- Time & Attendance System Support
- Time & Attendance System Reporting
- Payroll Vendor Payments

Suzanne Porter
Benefits Coordinator - Classified

859-957-2604

- Benefit Annual Enrollment
- Benefit Changes
- Payroll Deduction changes: Garnishments, 457, 401k and 403b Plan Deductions
- Payroll Processing
- Leave Processing
- Payroll Tax Deduction Changes
- Payroll Direct Deposit Changes

Cindy Fry
Payroll/Benefit Specialist - Certified

859-957-2629

- Payroll Processing
- Leave Processing
- Payroll Tax Deduction Changes
- Payroll Direct Deposit Changes
- Benefit Annual Enrollment
- Benefit Changes



KCSD Transportation Team



Brian Vanover
Assistant Superintendent,
Operations

Jim Hale
Director of Transportation 859-356-0253
Kit Ball, Administrative Assistant
Pauline Brownfield, Clerk

Jennifer Paganetto
Asst. Director of Transportation
859-356-0253

Timothy Dierker
Shop Supervisor
Lou Noll, Administrative Assistant

Chris Harmeling
Area Coordinator
Crescent Springs Lot

Rachel White
Area Coordinator
Support Operations Center

Carla Glaza
Area Coordinator
Support Operations Center

859-356-4937
Bus Garage and Maintenance
Lead Mechanic
Mechanic Technicians

859-331-1487
Bus Drivers and Bus Monitors
Special Needs
Blessed Sacrament
Caywood
Dixie
Dixie Sports
Hinsdale
River Ridge
St. Henry
St Joseph
St. Pius
Turkey Foot

859-356-0253
Bus Drivers and Bus Monitors
Driver Testing
Beechgrove
Kenton
Piner
Simon Kenton
Simon Kenton Sports
St Cecelia
Twenhofel
White's Tower

859-356-0253
Bus Drivers and Bus Monitors
Driver Training and Hiring
Fort Wright
Ryland
Scott
Scott Sports
St Anthony
Summit View Academy
Taylor Mill
Woodland



Brian Vanover
Assistant Superintendent,
Operations

KCSD Technology Team

Matthew Winkler
Director of Technology
859-957-2612



Gary Crawford, Network Administrator

- Maintain District Network Infrastructure
- Administer Leased Fiber Network, VOIP Phone System, Anti-Virus System, Active Directory, etc.
- Assist in Training Staff of District Applications
- Perform Preventative Server Maintenance
- Coordinate Training and Support for All Technology Systems
- Coordinate Ordering All Parts and New Items
- Receive and Coordinate Technology Deliveries
- Assist in Maintaining Lightspeed, IC, and Schoology/Performance Matters
- Complete Work Orders and Maintain Records
- Assist/Manage Student Led HelpDesk, Summer Workers, and Other Student Technology Support

Chris Schultz, Garet Morris-Dean, Devin Anderson & Brian Baird Network Consultant/ Technician

- Install, Repair, Maintain Technology Hardware and Software
- Assist in Training Staff on District Applications
- Perform Preventative Maintenance on District Technology
- Complete Work Orders and Maintain Records
- Coordinate Training and Support for All Technology Systems

School STLP Coordinator

- Sponsor School STLP Program
- Assist with Maintenance of Technology in School
- Update Software
- Maintain Student Accounts in School Based Applications
- Coordinate, Maintain, and Setup Staff and Student Network/Email Accounts
- Coordinate, Collect, Maintain Staff and Student AUP's
- Maintain School Webpage
- Assist the Asset Coordinator of Technology Items
- Conduct Regular STLP Meetings
- Encourage Staff and Students with Proper Technology Use Related to AUP
- STLP Students Compete in Regional, State, and National STLP Competitions
- Promote and Recognize STLP to All Stakeholders
- Attend All Technology Meetings – School and District

School Asset Coordinator

- Maintain Active Inventory of All School Assets including Owner and Location
- Complete All Forms Related to Assets
- Follow Procedures for Surplus Equipment
- Maintain Legal Proof of Ownership for All Assets (PO, Invoice, Manuals, etc.)
- Assist District Fixed Asset Coordinator to Maintain Accurate Records
- Assist Building Administrators and School Staff on Asset Management Policies and Procedures
- Attend All Technology Meeting – School and District

Cindy Albright Admin. Assistant, Support Operations Center and Technology

- Point of contact for visitors, vendors, and scheduled services at the Support Operations Center.
- Receives deliveries at the Support Operation Center and directs to the appropriate department.
- Schedules programing and facilities at the Support Operations Center
- Time sheets for the Technology Department.
- Enters requisitions and processes purchase orders..
- Enters and updates work orders related to Support Operations Center services.



Brian Vanover
Assistant Superintendent,
Operations

Jenny Notton
Director of Student Nutrition
859-957-0390

KCSD Student Nutrition Team



Diana Hankinson
Administrative Assistant,
Student Nutrition

Monica Trattles
Systems Coordinator

Amanda Meece
Systems/Operations Coordinator

Cafeteria Managers

859-957-2659

- Account adjustments/refund Requests
- Commodity management
- Time sheets
- Sub entry
- Vendor invoice entry
- Requisition entry
- Produce ordering

- Managers training
- Moving of food between schools
- Manager coverage
- Manager support

859-957-2687

- Non food purchasing
- Vendor-related issues
- Work orders
- Monthly reports
- Lunch accounts
- Free/reduced
- Mosaic issues

Cafeteria Staff

Matt Rigg
Chief Operations Officer

KCSD Support Operations Team

Brian Vanover
Assistant Superintendent,
Operations
859-957-2645

← Back to Main

Chris Baker
Energy Systems
Coordinator

859-462-2350

Building Automation Controls
Energy Star Program
SchoolDude Energy
Manager
Utility rate structures
Energy Rebates
Performance Contracts
Utility Power Share
Agreements
E=WISE2 Coordinator

Dave Fangmeyer
Maintenance Supervisor

859-750-9655

Building Maintenance including
Plumbing, Electrical,
HVAC, General
Maintenance, Key
Management, and
Playground Safety
Asbestos Management
(LEA-DP) appointee
Designated Compliance
Manager (DCM) for
Underground Ground
Storage Tanks (UST)
Kentucky Facility Inventory and
Control System (KFICS)
Coordinator
Assists with the district
preventative maintenance
program

Mike Hogue
Building Operations
Supervisor

859-322-6129

Oversees the supervision of all
Building Operations
Support staff

Manages all lawn care, athletic
field maintenance, facility
painting, and gym floor
maintenance

Manages small
repair/renovation projects

Oversees all health and fire
inspections

Mike Blau
Construction Supervisor

859-468-9590

Design Team and General
Contractor Selection
Team member for
construction/renovation
projects
Manages budgets for
construction/renovation
projects
Oversees new construction and
renovation projects
Purchases and coordinates
installation for all
purchase items on
construction/renovation
projects
Manages roof assessments
Manages flooring, roofing and
asphalt projects
Local and state building codes
compliance

Jennifer Weis-Smith
Procurement Manager

859-957-2650

Manages Purchasing function
for District

Review board and school
purchase orders; ensure
internal controls are
followed

Develop and provide training to
District personnel on all
elements of purchasing

Cinda Roberts,
Purchasing Agent

859-957-2630

Requisitions and Purchase
Orders

Bids and Request for
Proposals

Trains staff in Purchasing
policies and procedures

District Yearbook Manager

Ronda Smalley
Admin. Assistant, Support
Operations

859-957-2616

Time Sheets for the
Maintenance and
Building Operations
Support departments

Enters requisitions and
processes purchase
orders for all
Maintenance and
Building Operations
Support requests

Enters, updates, and closes
maintenance work orders

Schedules substitute
custodians

Maintenance Procurement
Cards

Key Fobs for stand-alone key
entry systems



Brian Vanover
Assistant Superintendent,
Operations

KCS D Safety Team

[← Back to Main](#)

Teal Nally
Safety Coordinator
859-957-2648

School Resource Officers

Navigate Prepared

School Level Safety Assessments

District Security Equipment and Technology



Dr. Shawna Harney
Chief Academic Officer

Kristie Cahill
Assistant Superintendent

KCSD English Language Development

Kacie Adams-Browning
EL Coordinator | 859-957-2613

District Wide Implementation and Monitoring of English Language Learner Instructional Programs, Data Analysis for Adapting Instruction and Improving Achievement, English Language Learner Family and Community Engagement, ACCESS Testing, District Wide English Language Learner Professional Development, Literacy Team

Megan Brown, Zach Dunford, Tiffany Hammonds, Lindsay Hetzel, Kyle Jordan, Scott Kremer, Nicole Montello, Emma Meiners

English Language Development Teachers

- Create and Oversee Implementation of PSPs
- Manage EL Records
- Design and Deliver ELD Instruction
- Collaborate with Classroom Teachers and Administrators
- EL Family Engagement
- Administer and Analyze EL Assessments

English Language Development Instructional Assistants

- Under the Supervision of EL Coordinator/ELD Teacher:
- Administer EL Assessments
 - Assist in Maintenance of ELD Records
 - Supplement ELD Instruction



Dr. Shawna Harney
Chief Academic Officer

Kristie Cahill
Assistant Superintendent

KCSD Academic Program Consultants

Tiffany Collier	Kim Adkins	Laura Cole	Sarah Glass	Ellen Crum	Sandra Davis
<p>859-957-2606</p> <p>Core Expectations for Quality Instruction Review, Development, and Implementation</p> <p>Data Analysis for Adapting Instruction and Improving Achievement for ALL Students</p> <p>Systemic and Differentiated Professional Learning</p> <p>Literacy Team</p> <p>Literacy Leaders</p>	<p>859-957-2649</p> <p>Core Expectations for Quality Instruction, Review, Development, and Implementation</p> <p>Data Analysis for Adapting Instruction and Improving Achievement for ALL Students</p> <p>Systemic and Differentiated Professional Learning</p> <p>Superintendent Advisory Council</p>	<p>859-957-2680</p> <p>Core Expectations for Quality Instruction Review, Development, and Implementation</p> <p>Data Analysis for Adapting Instruction and Improving Achievement for ALL Students</p> <p>Systemic and Differentiated Professional Learning</p> <p>Superintendent Advisory Council</p>	<p>859-957-2625</p> <p>Core Expectations for Quality Instruction, Review, Development, and Implementation</p> <p>Data Analysis for Adapting Instruction and Improving Achievement for ALL Students</p> <p>Systemic and Differentiated Professional Learning</p> <p>Instructional Technology Coaches</p>	<p>859-957-2622</p> <p>Core Expectations for Quality Instruction Review, Development, and Implementation</p> <p>Data Analysis for Adapting Instruction and Improving Achievement for ALL Students</p> <p>Systemic and Differentiated Professional Learning</p> <p>Literacy Team</p> <p>Literacy Leaders</p>	<p>859-957-2682</p> <p>Core Expectations for Quality Instruction Review, Development, and Implementation</p> <p>Data Analysis for Adapting Instruction and Improving Achievement for ALL Students</p> <p>Systemic and Differentiated Professional Learning</p>



KCSD Early Childhood Team

Dr. Shawna Harney
Chief Academic Officer

Carrie Holloway
Assistant Superintendent

Ellen Zimmer
Director of Early Childhood/Federal Programs
859-957-2679

Title I and Title II - Public/Non Public, Preschool, KEIS, Federal Programming,



Back to Main

Shelley Simpson
Academic Program Consultant, Public/Non Public Education

859-957-2674

- First Steps transition into preschool
- Preschool Curriculum Review, Development and Implementation
- Core Expectations for Quality Instruction Review, Development, and Implementation
- Data Analysis for Adapting Instruction and Improving Achievement for ALL students
- Systemic and Differentiated Professional Development
- Direct consultation Special Education Instruction and Compliance
- KCNET

Becky Koch
Administrative Assistant, Early Childhood

859-957-2632

- KEIS Enrollment
- Parent Communication of programming
- Student record and data management
- Screening scheduling for Child Find
- Preschool eligibility management



Dr. Shawna Harney
Chief Academic Officer

Jena Smiddy
Assistant Superintendent

Danielle Rice
Director of Special Education | 859-957-2608

IDEA, Due Process/State Complaints, manifestations, Medicaid, private schools, Lead Teacher, Special Education Data Analysis, Related Service Providers, School Psychologists

KCSD Special Education Team



<p>Jennifer Bryngelson Assistant Director of Special Education</p>	<p>TBD Special Education Admin. Assistant</p>	<p>Tammy Pugh Due Process/504 Coordinator</p>	<p>Tracy Adkins Special Education Consultant</p>	<p>Melinda Neltner Special Education Consultant</p>	<p>Meghan Todtenbier Special Education Consultant</p>
<p>859-957-2621</p> <p>IDEA Transportation DHH Community Based Instruction Visual Impairments Special Education Data Analysis Related Service Providers Literacy Team</p>	<p>859-957-2638</p> <p>Processes Requisitions, invoices, and travel Maintains special education supplies and records Medicaid Assistive Technology Check In/Check Out</p>	<p>859-957-2637</p> <p>Due Process Records Custodian 504 Compliance Reviews/Analysis Private Schools</p>	<p>859-919-1438</p> <p>Direct Consultation for Special Education Districtwide Special Education Professional Development Special Education Data Analysis EBD VI Systemic and Differentiated Professional Learning</p>	<p>859-919-1439</p> <p>Direct Consultation for Special Education Districtwide Special Education Professional Development Special Education Data Analysis MSD/STU Alternate Assessment SCM Systemic and Differentiated Professional Learning</p>	<p>859-957-2623</p> <p>Direct Consultation for Special Education Districtwide Special Education Professional Development Special Education Data Analysis Behavior Dashboard Assistive Technology DHH Systemic and Differentiated Professional Learning</p>

Dr. Shawna Harney
 Chief Academic Officer

Jena Smiddy
 Assistant Superintendent

Danielle Rice
 Director of Special Education | 859-957-2608

IDEA, Due Process/State Complaints, manifestations, Medicaid, private schools, Lead Teacher, Special Education Data Analysis, Related Service Providers, School Psychologists

KCSD School Psychologists/Therapists

Back to Main

**Jessica Fisk, Corri Steuart,
 Teresa Rose, Lauren Allen,
 Emily Campbell, Alicia Cahill,
 William Mazden Tyler, Karee
 Prather, Emma Moates**

School Psychologists

Evaluation planning
 Evaluation administration
 Evaluation results and Eligibility
 Crisis Team member
 Counseling
 MTSS committee member
 Collaboration with school teams

**Maggie Keeton, Madison Shaw,
 Mallory Smith, Stephanie Romes,
 Megan Robinson, Danita Osborne,
 Heather Butler, Jill Corwin, Jordan
 Kappen, Abby Massaron, Allison
 Halpin, Julie Wibbenmeyer, Susan
 Kelly, Jen Ruble, Kim Harvey, Nicole
 Flach, Libby Cumberledge, Dawn
 Hopkins, Alexis Diggs**

Speech Therapists

Assessment and Evaluation
 Eligibility and treatment planning
 Therapy
 Communication support
 Assistive Technology
 Collaboration with school teams

**PTs - Bridget Sherman, Jactyn Zenni,
 Lyndsey McLernon**

**OTs - Janaye Ponzer, Katie Tyler,
 Sarah Tuerpe, Zachariah Class, Julia
 Price, Jessica Dalton**

Therapists

Assessment and Evaluation
 Diagnosis and treatment planning
 Therapy
 Gait and movement training
 Assistive device training
 Collaboration with school teams

TBD

**RR/FW
 KN/RV
 SVA/SC
 TF/TW**

Itinerant Teachers

Instruction
 Implement IEP
 Attend ARC meetings
 Curriculum Development
 Assessment and Evaluation
 Communication and Collaboration

Dr. Shawna Harney
 Chief Academic Officer

Jena Smiddy
 Assistant Superintendent

Danielle Rice
 Director of Special Education | 859-957-2608

IDEA, Due Process/State Complaints, manifestations, Medicaid, private schools, Lead Teacher, Special Education Data Analysis, Related Service Providers, School Psychologists

Back to Main

Destiny Patterson
Rachelle Tyree
DHH Instructors

Provide specially designed instruction including academic subjects, language skills, and communication strategies to DHH students.
 Collaborate with staff to create a supportive learning environment.

Tiffany Barnes
Taylor Robinson
Educational Interpreters

Assist DHH students with understanding spoken language and communication in educational setting.
 Facilitate communication between students, staff, peers enabling effective participation.

Amy McDonald
Traci Branstutter
Jessica Farmer
Teachers/IA for Visually Impaired

Provide specially designed instruction on use of Braille, orientation and mobility, and use of assistive technology.
 Collaboration with staff on student specific needs.

Kathleen Boyle
Job Coach

Conducting assessments to determine potential career goals for job searching
 Career guidance to include resume, interview preparation, networking communication and outreach
 On the job training / support

Amber Lehn
Alicia Carnes
Educational Diagnosticians

Complete academic evaluation assessments for Pre-K -12 initial and re-evaluations
 Support districtwide special education evaluation needs



Kenton County School District | It's about ALL kids

Dr. Shawna Harney
Chief Academic Officer

Jena Smiddy
Assistant Superintendent

Matt Moore

Director of Districtwide Programs

College and Career Readiness P-12, Internships, Career Based District Dual Credit Programs, Virtual Learning, Individual Learning Plans (ILP), Project Lead the Way, JROTC, Perkins, Ignite, CTE Programs, GT Coordinator, Prep/Prep Plus, AP Coordinator, Governor's Scholars, FAFSA

Jackie Zwick
Virtual Learning Supervisor

859-913-2580

Instructs students who are placed at the Virtual Learning Program through the administrative hearing process or a school level principal placement

Coordinates transition between school and Virtual Learning Program and back to school

Collaborates with the home school of the student to monitor student progress and put services in place to support student while at the Virtual Learning Program

KCSD Districtwide Programs

Back to Main

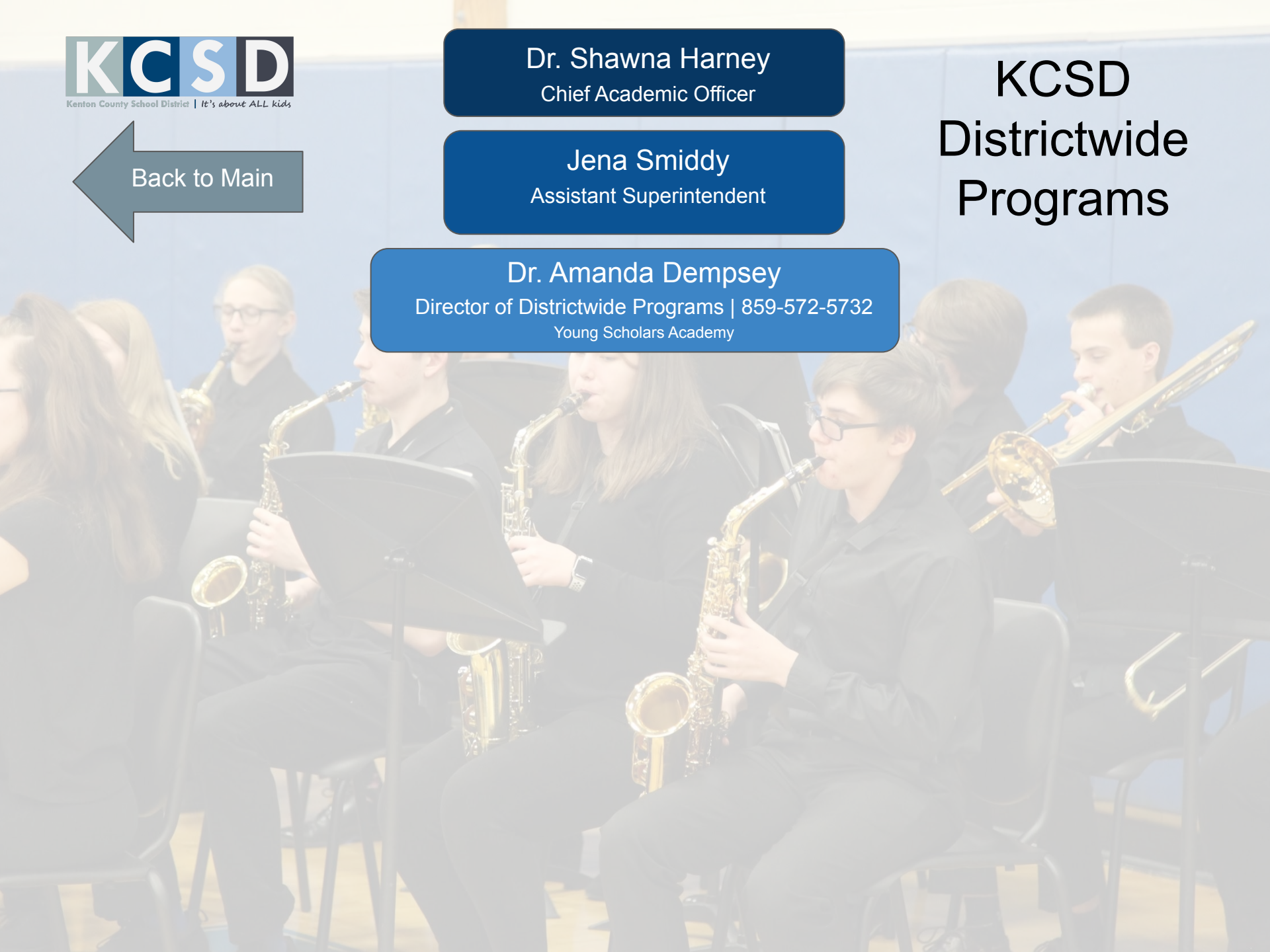


Dr. Shawna Harney
Chief Academic Officer

Jena Smiddy
Assistant Superintendent

Dr. Amanda Dempsey
Director of Districtwide Programs | 859-572-5732
Young Scholars Academy

KCSD Districtwide Programs





Dr. Shawna Harney
Chief Academic Officer

KCSD Student Services

Lesley Smith
Assistant Superintendent

Paula Rust

859-957-2640

Director of Health Services/Healthy At Work Officer
School-Based Health Centers, Medication Training, Immunization Compliance, Medicaid,
Direct Supervisor of School Nurses and non-licensed health technicians

Karla Allison
District Nurse

859-957-2669

Monitor health reports

Support school health officers

Back to Main



Dr. Shawna Harney
Chief Academic Officer

Lesley Smith
Assistant Superintendent

KCSD Student Services

Back to Main

Todd Dupin

Director of Pupil Personnel | 859-957-2679

Administrative Hearing Officer, FRAM Coordinator, School Secretaries, Infinite Campus attendance, School Calendar, Code of Conduct

Marsha Swegman
Administrative Assistant

Jennifer Pracht, Jessica Schworer and Heather Arnold, RBTL Interventionists

Kelly Blevins
Court Liaison/
Homeless Coordinator

Angela Weiss
Student Information System Specialist

Randy Borchers
Student Engagement Coordinator

Emily Craddock
McKinney Vento Social Worker

859-957-2657

Jennifer Pracht
859-750-1233

859-341-6486

859-957-2641

859-957-2627

859-653-8709

Infinite Campus data entry

Assignment of user rights

Parent/Student portal

Open Enrollment/Tuition

Basic Diploma

Home School

LEAD Report

Jessica Schworer
859-652-5709

Heather Arnold
859-322-6108

Deliver attendance interventions and actions directed by RBTL team

Support students and families identified as homeless

Support students and families to improve attendance

Consultation, support and training around RBTL, court and homeless program

Court issues and referrals

Liaison with CFHS, CDW and FAIR Team

Guide and support RBTL interventionist work

DCBS Transportation System Foster

Infinite Campus support for schools

Ongoing collection and reporting of data

SAAR Report

LEAD Report

Training of district and school personnel

Title IX Coordinator (activities/athletics)

Athletic Directors

School Dude scheduling

Districtwide Activities/Data Collection and Analysis

Community Education

Facilities contract and usage

Sandy Arnold
District Aquatics Director

TBD
Assistant Aquatics Director

859-960-1605
District Aquatics Center

Homeless program consultation, support and training

Direct support for homeless students and families

Collaborate with RBTL Interventionists

McKinney Vento Transportation



Dr. Shawna Harney
Chief Academic Officer

Lesley Smith
Assistant Superintendent

Caroline Capal
Director of Districtwide Programs

859-957-2605

FRYSCS, School Counselors, Title IV Part A Budget, NKYDC, SEB Interventionalists

KCSD Reducing Barriers To Learning Team



Sarah Lowe, Derek Chow, Amy Marsh, Jason Frazier, Pam Pitts, Krystal Fritsch and Emily Klaine
SEB Interventionists

Provide MTSS SEB tiered interventions

Collaborate with school MTSS teams by providing progress monitoring data for individual student interventions and participating in placement decisions

Collaborate and/or develop individualized care (treatment) plans.

Provide crisis intervention and conduct risk assessments.

Lindsey Wilson
Mental Health Consultant

859-957-2624

Mental health/SEB consultation, support and training

School-based therapy liaison

SEB Data Analysis

Crisis Team

Threat Assessment/Navigate 360

Trauma Informed Care

Systematic and differentiated professional learning

Suicide Prevention & Awareness

Substance Use Prevention

Michelle Boutwell
Behavior Support Coordinator

859-957-2672

Behavior/ SEL consultation, support and training

PBIS

SEB Data Analysis

Crisis Team

Trauma Informed Care

Systematic and differentiated professional learning

Substance Use Prevention