

FY2026

Rural Secondary Program

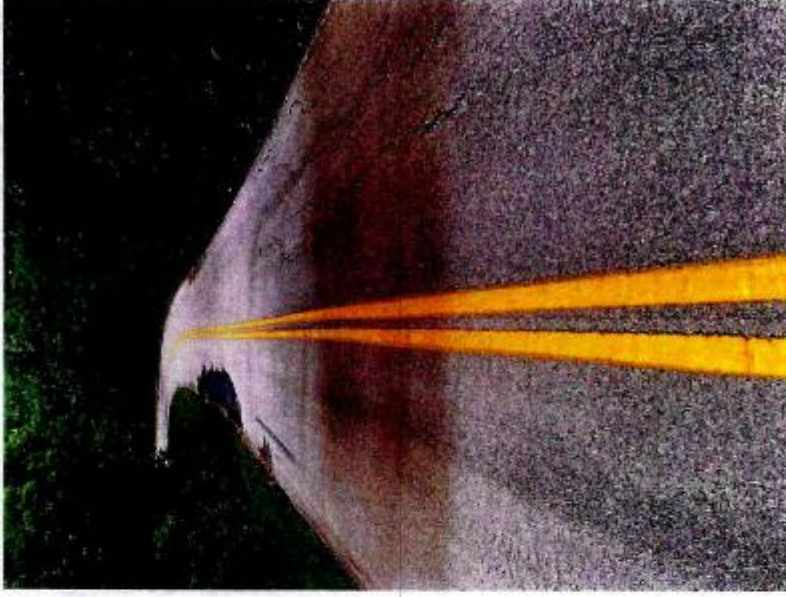
Funding

- Total: \$1,419,291
 - Flex Funds(20%): \$391,285
 - State Funds: \$1,028,006
-

Recommendation #1

KY878

Asphalt Resurfacing
KY1543 to County Line
2.877 MM – 7.485 MM
Cost: \$450,000



Recommendation #2

KY369

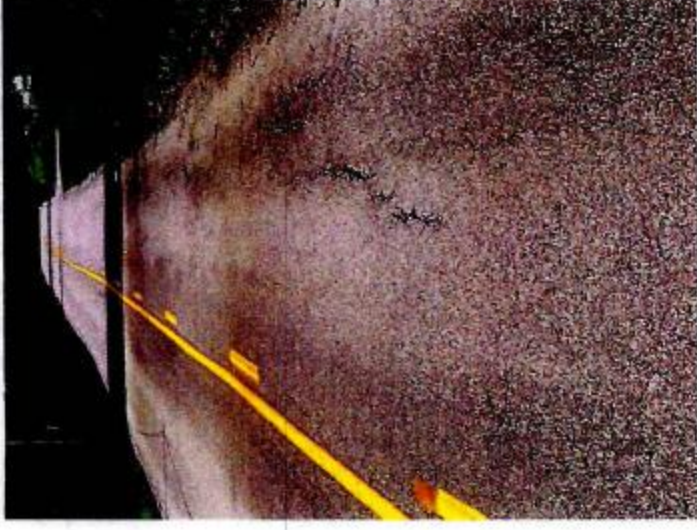
Resurfacing

Ferry to K1 Road

0.00MM – 3.14MM

Distance: 3.14 Miles

Cost: \$420,000



Remaining Funds

Replace Culverts on Rural Secondary Routes & Base Failure Repairs

- \$158,006 Remaining
 - Average cost of culvert replacement \$18,000
-