

DEPARTMENT OF FACILITIES

THOMAS STOKES, DIRECTOR
TRACY PARSLEY, MAINTENANCE SUPERVISOR
BOBBIE CASTLEMAN, CUSTODIAL SUPERVISOR
GEORGE BROCK, ENERGY MANAGER

MEMORANDUM

TO: Dr. Jesse Bacon, Superintendent

FROM: Thomas Stokes, Director of Facilities *TAS*

DATE: June 10, 2026

RE: BEHS PSC - BG 25-145 - Change Order #18 - Lighting Changes

BCPS Facilities requested additional lights be added at the locker room stalls, mop sink, shower stalls and PE locker room doorways. This also accounts for light location revisions relative to duct rerouting.

I recommend approval of this request.

Bullitt East Physical Science Center - Attached paperwork is listed below with *action items* noted for each:

- BP1 - BEHS PSC - G701-2017 - Change Order 18 - *for Board Signature*
- BP1 - BEHS PSC - FACPAC - Change Order 18 - Lighting Changes - *for Board Signature*
 - COR-19 BEHS RFP-9 Lighting Changes - *For Board Reference, no action required.*

OUR MISSION IS TO INSPIRE AND EQUIP OUR STUDENTS TO SUCCEED IN LIFE

BULLITT COUNTY PUBLIC SCHOOLS IS AN EQUAL EDUCATION AND EMPLOYMENT INSTITUTION



AIA Document G701® - 2017

Change Order

PROJECT: *(Name and address)*
 BCPS Phase III - Bid Package No. 1 -
 Bullitt EAST Physical Science Center

 11450 Ky 44
 Mt Washington, KY 40047

CONTRACT INFORMATION:
 Contract For: BCPS Phase III - Bid
 Package No. 1 - Bullitt EAST Physical
 Science Center
 Date: 06-19-2025

CHANGE ORDER INFORMATION:
 Change Order Number: 018

 Date: 06-15-2026

OWNER: *(Name and address)*
 Bullitt County Public Schools Board of
 Education
 1040 Hwy 44 East
 Shepherdsville, KY 40165

ARCHITECT: *(Name and address)*
 Studio Kremer Architecture, Inc.

 1231 South Shelby Street
 Louisville, KY 40203

CONTRACTOR: *(Name and address)*
 Calhoun Construction Services, Inc.

 7707 National Turnpike
 Louisville, KY 40218

THE CONTRACT IS CHANGED AS FOLLOWS:

(Insert a detailed description of the change and, if applicable, attach or reference specific exhibits. Also include agreed upon adjustments attributable to executed Construction Change Directives.)
 See COR 19 and RFP 09 for Scope of Work included in this Change Order.

The original Contract Sum was	\$ 12,140,198.26
The net change by previously authorized Change Orders	\$ 429,115.98
The Contract Sum prior to this Change Order was	\$ 12,569,314.24
The Contract Sum will be increased by this Change Order in the amount of	\$ 20,219.00
The new Contract Sum including this Change Order will be	\$ 12,589,533.24

The Contract Time will be unchanged by (0) days.
 The new date of Substantial Completion will be

NOTE: This Change Order does not include adjustments to the Contract Sum or Guaranteed Maximum Price, or the Contract Time, that have been authorized by Construction Change Directive until the cost and time have been agreed upon by both the Owner and Contractor, in which case a Change Order is executed to supersede the Construction Change Directive.


NOT VALID UNTIL SIGNED BY THE ARCHITECT, CONTRACTOR AND OWNER.



 ARCHITECT *(Signature)*

BY: Catherine Noble Ward, AIA

(Printed name, title, and license number if required)



 CONTRACTOR *(Signature)*

BY: Joel Pittard, Project Manager

(Printed name and title)

 OWNER *(Signature)*

BY: Dr. Jesse Bacon, Superintendent

(Printed name and title)

6-09-2026

 Date

6/9/2026

 Date

 Date

FACPAC Contract Change Order Supplemental Information Form (Ref# 65242)

Form Status: Saved

Tier 1 Project: Phase 3 Athletics - BCHS and BEHS Field Houses

BG Number: 25-145

District: Bullitt County (HB678) (071)

Status: Active

Phase: Project Initiation (View Checklist)

Contract: Calhoun Construction Services, 0002, BP1 - Bullitt East Physical Science Center -
General Construction

Type: General Contractor

Proposed

Change Order Number	18
Time Extension Required	No
Date Of Change Order	6/15/2026
Change Order Amount To Date	Increase

Construction Contingency

Calculations below are project wide. Remaining negative Construction Contingency may require the submission of a revised BG1.

Current Approved Amount	\$1,816,582.46
Net Approved COs	\$886,095.30
Remaining After Approved COs	\$930,487.16
Net All COs	\$651,492.14
Remaining After All COs	\$1,165,090.32

This Requested Change Order Amount \$20,219.00

+/-

Change In A/E Fee This Change Order \$1,010.95

+/-

Change In CM Fee This Change Order \$0.00

+/-

Remaining Construction Contingency \$1,165,090.32

Balance

Contract Change Requested By BCPS Facilities

Contract Change Reason Code Expansion of Scope

Change Order Description And Justification

BCPS Facilities requested additional lights be added at the locker room stalls, mop sink, shower stalls and PE locker room doorways. This also accounts for light location revisions relative to duct rerouting.

Cost Benefit To Owner

Work can commence with trades on site in sequence with the established construction schedule.

Contract unit prices have been utilized No to support the cost associated with this change order.

Detailed Cost Breakdown

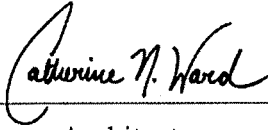
Contract unit prices have not been utilized, provide a detailed cost breakdown which separates labor, material, profit and overhead.

Detail Item	Amount	Percent of Total
Labor	\$2,624.00	12.98%
Materials	\$14,306.00	70.76%
Profit and Overhead	\$3,089.00	15.28%
Bond Insurance	\$200.00	0.99%
Cost Breakdown Total:	\$20,219.00	

Cost for this Change Order supported No by an alternate bid or competitive price quote

Explain Why

Change Order Supplemental Information Form Signature Page (Online Form Ref# 65242)



Architect

6-09-2026

Date

N/A

Construction Manager

Date

Finance Officer

Date

Local Board of Education Designee

Date

Change Order Request 19 - PCO #50 - RFP-9 Electrical Revisions for Ductwork Changes

846-- Bullitt East High School Physical Science Center

5/20/2026



CALHOUN
CONSTRUCTION SERVICES

Summary of work

RFP-9 Electrical/Lighting Revisions (supplemental costs relating to RFP-8 Ductwork Revisions); Includes added lighting



\$18,199.00

o Electrical - KES ==> BEHS RFP-9 Lighting Revisions ==> \$18,199.00

Sub Total: \$18,199.00

Bond: \$200.00

Fee: \$1,820.00

Total	\$20,219.00
--------------	--------------------

Approved By: _____

Submitted By: Calhoun

Date: _____

Date: 5/20/2026

BEHS Physical Science Center — 25-500

11450 KY-44, Mount Washington, Ky. 40047

Change orders report generated by Keith Joseph (Kentuckiana Electrical Services)

**Change Order KES-0007 - RFP-09 BEHS Owner Req and Ductwork Electrical Revisions**

Creator	Keith Joseph (Kentuckiana Electrical Services)	Total cost	18,199.25 USD
----------------	--	-------------------	---------------

Assignee	Keith Joseph (Kentuckiana Electrical Services)	Reason	Owner change
-----------------	--	---------------	--------------

Status	Pending approval	Reference number	—
---------------	------------------	-------------------------	---

Due date	—	Schedule impact?	5 Days
-----------------	---	-------------------------	--------

Responsible company	Kentuckiana Electrical Services	Company address	—
----------------------------	---------------------------------	------------------------	---

Description	Additional Light Fixtures
--------------------	---------------------------

Response (rev.0)

Responded by	—	Responded on	—
---------------------	---	---------------------	---

Notes	—
--------------	---

Attachments	—
--------------------	---

Cost (rev.0)

Submitted by	Keith Joseph (Kentuckiana Electrical Services)	Submitted on	05/15/2026
---------------------	--	---------------------	------------

Notes	—
--------------	---

Backup documents RFP 09 - BP1 BEHS PSC - Owner Req and Ductwork Electrical Revisions (Issued 5-8-2026).pdf

Cost summary (USD)	
Original contract	1,092,029.53
Previously approved changes	0.00
Current contract	1,092,029.53
This change order	18,199.25
New contract with this change order	1,110,228.78

Submitter signature	Date
----------------------------	-------------

Approver signature	Date
---------------------------	-------------



Cost breakdown (rev.0)

Materials

#	ITEM NAME	QUANTITY	UNIT TYPE	UNIT COST (USD)	ITEM COST (USD)
1	3/4" EMT UNIT PRICED	200.0	Linear feet	7.92	1,584.00
2	#12 THHN UNIT PRICED	1500.0	Linear feet	2.97	4,455.00
3	4/S BOX 2-1/8" DEEP	25.0	Each	0.95	23.71
4	Fixture Whip	18.0	Each	12.78	230.04
5	Misc. Hardware	1.0	Each	55.00	55.00
6	Lighting Material	1.0	Lump sum	7,957.79	7,957.79
MATERIALS					14,305.54

Labor

#	ITEM NAME	QUANTITY	UNIT TYPE	UNIT COST (USD)	ITEM COST (USD)
1	JW S/T	16.0	Hours	95.00	1,520.00
2	Apprentice S/T	16.0	Hours	69.00	1,104.00
LABOR					2,624.00

SUBTOTAL					16,929.54
-----------------	--	--	--	--	------------------

REQUEST FOR PROPOSAL

PROJECT:	Phase III Athletics - Bid Package No. 1 Bullitt EAST Physical Science Center Bullitt County Public Schools	REQUEST FOR PROPOSAL NO.:	09
OWNER:	Bullitt County Public Schools 1040 Highway 44 East Shepherdsville, KY 40165	DATE:	8-May-2025
TO CONTRACTOR:	Calhoun Construction Services, Inc. 7707 National Turnpike Louisville, KY 40218	ARCHITECT:	Studio Kremer Architects 1231 S Shelby Street Louisville, KY 40203
		ARCHITECT'S PROJECT NO.:	2023-50.1 BG# 25-145

Please submit an itemized quotation for changes in the Contract Sum and/or Time incidental to proposed modifications to the Contract Documents described herein.

THIS IS NOT A CHANGE ORDER NOR A DIRECTION TO PROCEED WITH THE WORK DESCRIBED HEREIN

Description:

Provide price proposal for the following:

- Item No.1** This RFP includes work related to light/electrical routing changes relative to Ductwork revisions at the 2nd floor locker rooms. This RFP only includes scope for the electrical contractor. Work related to other trades is covered under CO 15.
- Item No.2** Refer to E1.21 BEHS
- Revised light fixture heights and added additional light fixtures.
- Item No.3** Refer to E1.22 BEHS
- Revised light fixture heights and added additional light fixtures.
 - Relocated emergency battery inverters to match NORTH.

Attachments:

Revised Drawings BEHS PSC: E1.21 BEHS, E1.22 BEHS

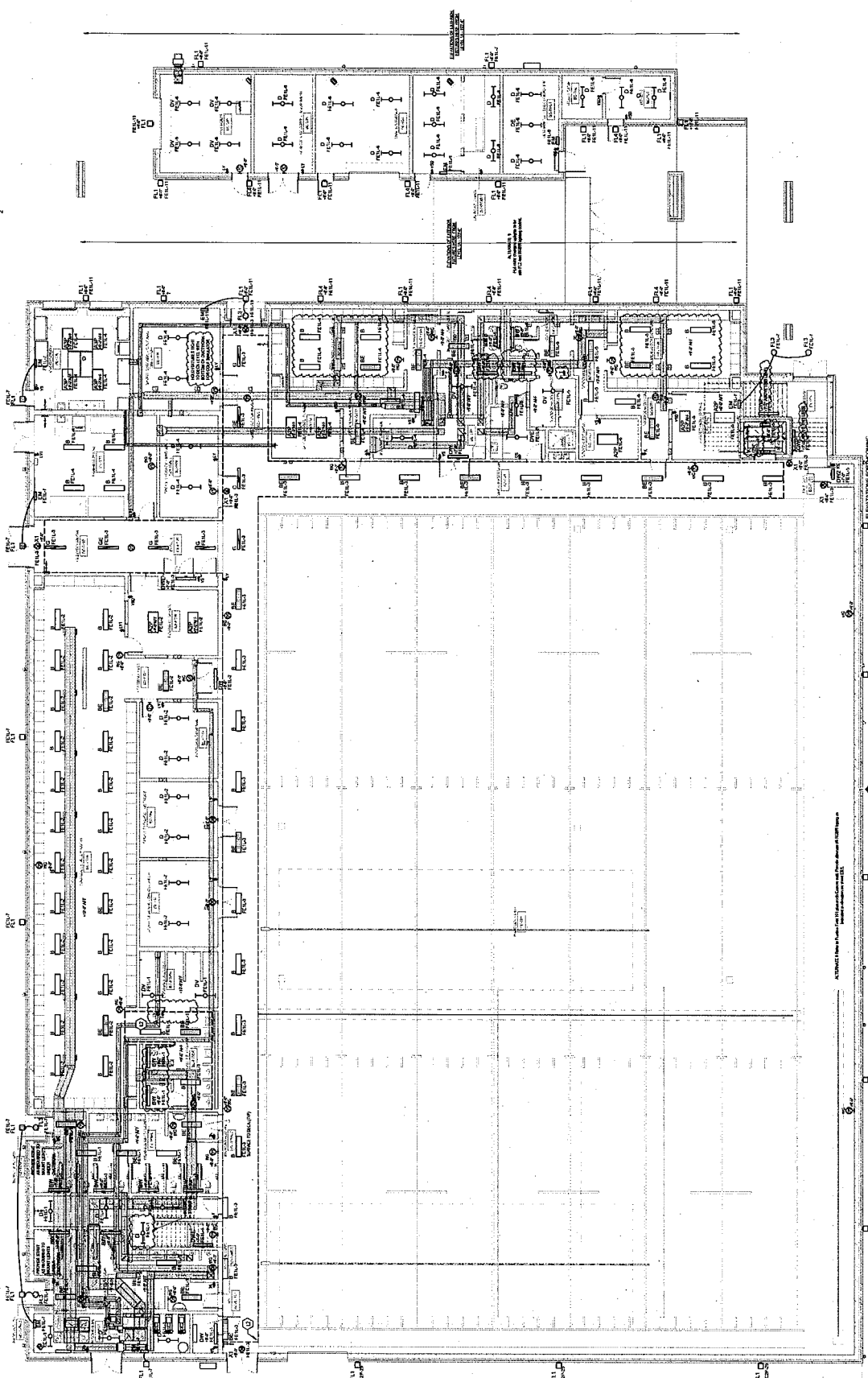
ISSUED:	8-May-2025	ARCHITECT:	studio kremer architects
CONTRACTOR:	Calhoun Construction Services, Inc.	BY:	Cate Noble Ward, AIA

KEYNOTES:

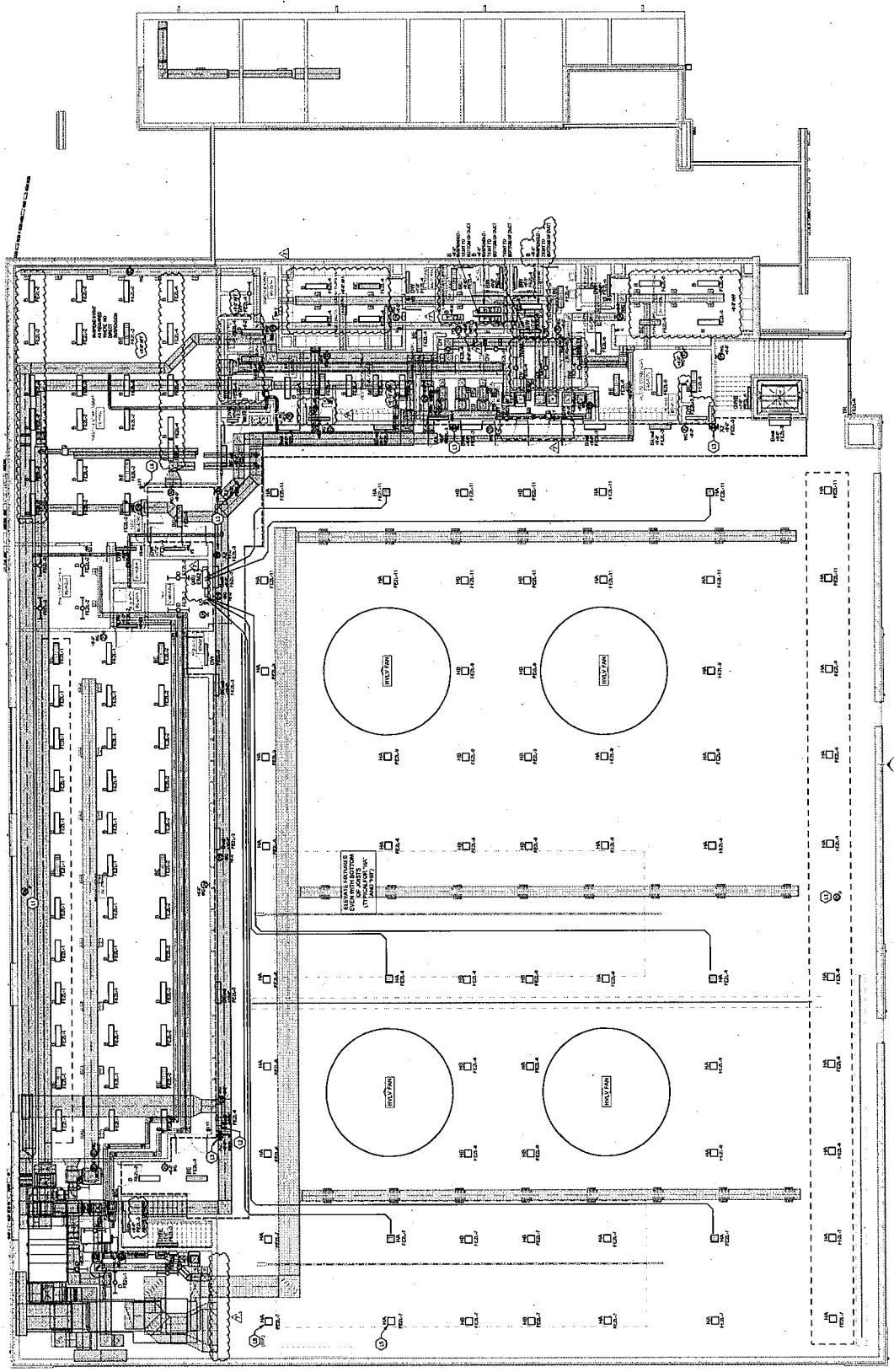
1. LOCATIONS INDICATED ON THIS SHEET DENOTE THE LOCATION OF THE LIGHTING FIXTURES.

GENERAL NOTES (LIGHTING):

- A. ALL LIGHTING FIXTURES SHALL BE INSTALLED IN ACCORDANCE WITH THE NATIONAL ELECTRICAL CODE (NEC) AND ALL APPLICABLE LOCAL, STATE AND FEDERAL REGULATIONS. THE LIGHTING FIXTURES SHALL BE INSTALLED IN ACCORDANCE WITH THE MANUFACTURER'S INSTALLATION INSTRUCTIONS. THE LIGHTING FIXTURES SHALL BE INSTALLED IN ACCORDANCE WITH THE MANUFACTURER'S INSTALLATION INSTRUCTIONS. THE LIGHTING FIXTURES SHALL BE INSTALLED IN ACCORDANCE WITH THE MANUFACTURER'S INSTALLATION INSTRUCTIONS.
- B. THE LIGHTING FIXTURES SHALL BE INSTALLED IN ACCORDANCE WITH THE MANUFACTURER'S INSTALLATION INSTRUCTIONS. THE LIGHTING FIXTURES SHALL BE INSTALLED IN ACCORDANCE WITH THE MANUFACTURER'S INSTALLATION INSTRUCTIONS. THE LIGHTING FIXTURES SHALL BE INSTALLED IN ACCORDANCE WITH THE MANUFACTURER'S INSTALLATION INSTRUCTIONS.
- C. THE LIGHTING FIXTURES SHALL BE INSTALLED IN ACCORDANCE WITH THE MANUFACTURER'S INSTALLATION INSTRUCTIONS. THE LIGHTING FIXTURES SHALL BE INSTALLED IN ACCORDANCE WITH THE MANUFACTURER'S INSTALLATION INSTRUCTIONS. THE LIGHTING FIXTURES SHALL BE INSTALLED IN ACCORDANCE WITH THE MANUFACTURER'S INSTALLATION INSTRUCTIONS.
- D. THE LIGHTING FIXTURES SHALL BE INSTALLED IN ACCORDANCE WITH THE MANUFACTURER'S INSTALLATION INSTRUCTIONS. THE LIGHTING FIXTURES SHALL BE INSTALLED IN ACCORDANCE WITH THE MANUFACTURER'S INSTALLATION INSTRUCTIONS. THE LIGHTING FIXTURES SHALL BE INSTALLED IN ACCORDANCE WITH THE MANUFACTURER'S INSTALLATION INSTRUCTIONS.
- E. THE LIGHTING FIXTURES SHALL BE INSTALLED IN ACCORDANCE WITH THE MANUFACTURER'S INSTALLATION INSTRUCTIONS. THE LIGHTING FIXTURES SHALL BE INSTALLED IN ACCORDANCE WITH THE MANUFACTURER'S INSTALLATION INSTRUCTIONS. THE LIGHTING FIXTURES SHALL BE INSTALLED IN ACCORDANCE WITH THE MANUFACTURER'S INSTALLATION INSTRUCTIONS.



1 BULLITT EAST FIRST FLOOR PLAN - LIGHTING
SCALE: 1/8" = 1'-0"



- KEYNOTES:**
1. ALL LIGHTING SHALL BE INSTALLED IN ACCORDANCE WITH THE ILLUMINANCE REQUIREMENTS OF THE IESNA LIGHTING HANDBOOK, 10TH EDITION, TABLE 10.1.1.1. ALL LIGHTING SHALL BE INSTALLED IN ACCORDANCE WITH THE IESNA LIGHTING HANDBOOK, 10TH EDITION, TABLE 10.1.1.1. ALL LIGHTING SHALL BE INSTALLED IN ACCORDANCE WITH THE IESNA LIGHTING HANDBOOK, 10TH EDITION, TABLE 10.1.1.1.
 2. LIGHTING IN THIS AREA TO BE ON SMALL SEPARATE TIME.
 3. ALL LIGHTING SHALL BE INSTALLED IN ACCORDANCE WITH THE IESNA LIGHTING HANDBOOK, 10TH EDITION, TABLE 10.1.1.1.
 4. CONDUIT SHALL BE INSTALLED IN ACCORDANCE WITH THE IESNA LIGHTING HANDBOOK, 10TH EDITION, TABLE 10.1.1.1.
 5. ALL LIGHTING SHALL BE INSTALLED IN ACCORDANCE WITH THE IESNA LIGHTING HANDBOOK, 10TH EDITION, TABLE 10.1.1.1.
 6. ALL LIGHTING SHALL BE INSTALLED IN ACCORDANCE WITH THE IESNA LIGHTING HANDBOOK, 10TH EDITION, TABLE 10.1.1.1.
 7. ALL LIGHTING SHALL BE INSTALLED IN ACCORDANCE WITH THE IESNA LIGHTING HANDBOOK, 10TH EDITION, TABLE 10.1.1.1.
 8. ALL LIGHTING SHALL BE INSTALLED IN ACCORDANCE WITH THE IESNA LIGHTING HANDBOOK, 10TH EDITION, TABLE 10.1.1.1.
 9. ALL LIGHTING SHALL BE INSTALLED IN ACCORDANCE WITH THE IESNA LIGHTING HANDBOOK, 10TH EDITION, TABLE 10.1.1.1.
 10. ALL LIGHTING SHALL BE INSTALLED IN ACCORDANCE WITH THE IESNA LIGHTING HANDBOOK, 10TH EDITION, TABLE 10.1.1.1.
 11. ALL LIGHTING SHALL BE INSTALLED IN ACCORDANCE WITH THE IESNA LIGHTING HANDBOOK, 10TH EDITION, TABLE 10.1.1.1.
 12. ALL LIGHTING SHALL BE INSTALLED IN ACCORDANCE WITH THE IESNA LIGHTING HANDBOOK, 10TH EDITION, TABLE 10.1.1.1.
 13. ALL LIGHTING SHALL BE INSTALLED IN ACCORDANCE WITH THE IESNA LIGHTING HANDBOOK, 10TH EDITION, TABLE 10.1.1.1.
 14. ALL LIGHTING SHALL BE INSTALLED IN ACCORDANCE WITH THE IESNA LIGHTING HANDBOOK, 10TH EDITION, TABLE 10.1.1.1.
 15. ALL LIGHTING SHALL BE INSTALLED IN ACCORDANCE WITH THE IESNA LIGHTING HANDBOOK, 10TH EDITION, TABLE 10.1.1.1.

GENERAL NOTES (LIGHTING):

- A. ALL LIGHTING SHALL BE INSTALLED IN ACCORDANCE WITH THE IESNA LIGHTING HANDBOOK, 10TH EDITION, TABLE 10.1.1.1.
- B. ALL LIGHTING SHALL BE INSTALLED IN ACCORDANCE WITH THE IESNA LIGHTING HANDBOOK, 10TH EDITION, TABLE 10.1.1.1.
- C. ALL LIGHTING SHALL BE INSTALLED IN ACCORDANCE WITH THE IESNA LIGHTING HANDBOOK, 10TH EDITION, TABLE 10.1.1.1.
- D. ALL LIGHTING SHALL BE INSTALLED IN ACCORDANCE WITH THE IESNA LIGHTING HANDBOOK, 10TH EDITION, TABLE 10.1.1.1.
- E. ALL LIGHTING SHALL BE INSTALLED IN ACCORDANCE WITH THE IESNA LIGHTING HANDBOOK, 10TH EDITION, TABLE 10.1.1.1.
- F. ALL LIGHTING SHALL BE INSTALLED IN ACCORDANCE WITH THE IESNA LIGHTING HANDBOOK, 10TH EDITION, TABLE 10.1.1.1.
- G. ALL LIGHTING SHALL BE INSTALLED IN ACCORDANCE WITH THE IESNA LIGHTING HANDBOOK, 10TH EDITION, TABLE 10.1.1.1.
- H. ALL LIGHTING SHALL BE INSTALLED IN ACCORDANCE WITH THE IESNA LIGHTING HANDBOOK, 10TH EDITION, TABLE 10.1.1.1.
- I. ALL LIGHTING SHALL BE INSTALLED IN ACCORDANCE WITH THE IESNA LIGHTING HANDBOOK, 10TH EDITION, TABLE 10.1.1.1.
- J. ALL LIGHTING SHALL BE INSTALLED IN ACCORDANCE WITH THE IESNA LIGHTING HANDBOOK, 10TH EDITION, TABLE 10.1.1.1.
- K. ALL LIGHTING SHALL BE INSTALLED IN ACCORDANCE WITH THE IESNA LIGHTING HANDBOOK, 10TH EDITION, TABLE 10.1.1.1.
- L. ALL LIGHTING SHALL BE INSTALLED IN ACCORDANCE WITH THE IESNA LIGHTING HANDBOOK, 10TH EDITION, TABLE 10.1.1.1.
- M. ALL LIGHTING SHALL BE INSTALLED IN ACCORDANCE WITH THE IESNA LIGHTING HANDBOOK, 10TH EDITION, TABLE 10.1.1.1.
- N. ALL LIGHTING SHALL BE INSTALLED IN ACCORDANCE WITH THE IESNA LIGHTING HANDBOOK, 10TH EDITION, TABLE 10.1.1.1.
- O. ALL LIGHTING SHALL BE INSTALLED IN ACCORDANCE WITH THE IESNA LIGHTING HANDBOOK, 10TH EDITION, TABLE 10.1.1.1.
- P. ALL LIGHTING SHALL BE INSTALLED IN ACCORDANCE WITH THE IESNA LIGHTING HANDBOOK, 10TH EDITION, TABLE 10.1.1.1.
- Q. ALL LIGHTING SHALL BE INSTALLED IN ACCORDANCE WITH THE IESNA LIGHTING HANDBOOK, 10TH EDITION, TABLE 10.1.1.1.
- R. ALL LIGHTING SHALL BE INSTALLED IN ACCORDANCE WITH THE IESNA LIGHTING HANDBOOK, 10TH EDITION, TABLE 10.1.1.1.
- S. ALL LIGHTING SHALL BE INSTALLED IN ACCORDANCE WITH THE IESNA LIGHTING HANDBOOK, 10TH EDITION, TABLE 10.1.1.1.
- T. ALL LIGHTING SHALL BE INSTALLED IN ACCORDANCE WITH THE IESNA LIGHTING HANDBOOK, 10TH EDITION, TABLE 10.1.1.1.
- U. ALL LIGHTING SHALL BE INSTALLED IN ACCORDANCE WITH THE IESNA LIGHTING HANDBOOK, 10TH EDITION, TABLE 10.1.1.1.
- V. ALL LIGHTING SHALL BE INSTALLED IN ACCORDANCE WITH THE IESNA LIGHTING HANDBOOK, 10TH EDITION, TABLE 10.1.1.1.
- W. ALL LIGHTING SHALL BE INSTALLED IN ACCORDANCE WITH THE IESNA LIGHTING HANDBOOK, 10TH EDITION, TABLE 10.1.1.1.
- X. ALL LIGHTING SHALL BE INSTALLED IN ACCORDANCE WITH THE IESNA LIGHTING HANDBOOK, 10TH EDITION, TABLE 10.1.1.1.
- Y. ALL LIGHTING SHALL BE INSTALLED IN ACCORDANCE WITH THE IESNA LIGHTING HANDBOOK, 10TH EDITION, TABLE 10.1.1.1.
- Z. ALL LIGHTING SHALL BE INSTALLED IN ACCORDANCE WITH THE IESNA LIGHTING HANDBOOK, 10TH EDITION, TABLE 10.1.1.1.

1 BULLITT EAST SECOND FLOOR PLAN - LIGHTING
SCALE: 1/8" = 1'-0"