



FIELD OBSERVATION REPORT

West Hardin Middle School, 202280 -CA8

Date: 4/29/2026 Time: 11:30 AM

Weather: Cloudy/70°

Observed by: Joseph Jones, AIA

Report No: 36

Trades Observed on Site: General Trades, Site Work, Masons, Roofers, Glazers, Floor Polishers, Terrazzo Installers, Plumbers, Mechanical, Electricians

1. Work observed in Progress

- a) Terrazzo floors were being installed in Area D.
- b) Concrete slabs being polished in Area D.
- c) Brick being laid on Area A library.
- d) Concrete curbs were being poured.
- e) Window installation.
- f) Mechanical and plumbing work.
- g) Electrical work.

2. General Observations

- a) Extruded concrete curbs were being installed site wide. This will allow the base course of the asphalt paving to be laid, making the site easier to navigate and help keep the interior of the building cleaner.
- b) The paved concrete aprons were poured at the loading dock area.



- c) It appeared that the bleachers at the playing field were nearing completion. A punch list inspection of the bleachers is scheduled for Wednesday, May 6, 2026. The bleachers were set on a concrete pad which was poured a few weeks before.



The view from the pressbox and concession stand of the field is excellent.



The east end of the bleacher platform is accessible via ramp for accessible viewing positions.



d) The concession building is nearing completion. Electrical and mechanical work was underway.



e) Plywood had been installed to gain access to the toilets off the elevated platform to the east of the concessions building.



f) Bricks have been laid on the first and second floor of Area A and appeared to be almost complete. This includes the administrative area on the first floor and the library on the second floor.



g) It appeared that masonry work was almost complete in the south entry and the library above.



- h) Temporary window closures were in place so that the first coat of paint could be applied in the classroom wings.



- i) The cafeteria was still being used for equipment and tool storage.



- j) More equipment was installed in the kitchen.



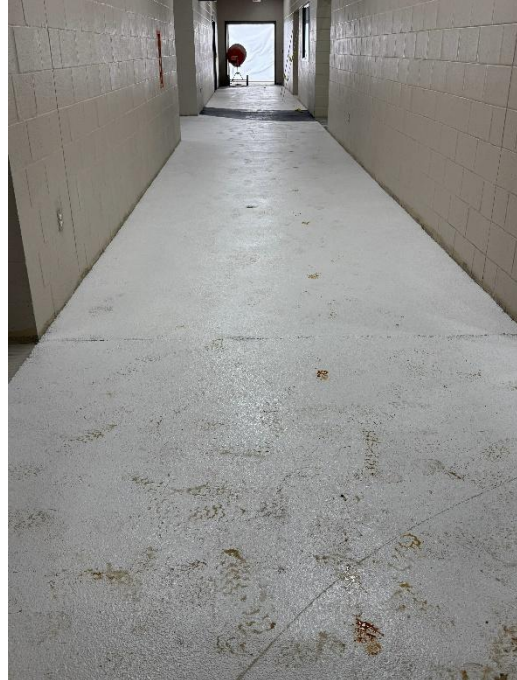
- k) The dish machine was installed along with dish tables.



- l) Metal dividers strips for the thin-set terrazzo flooring were put into place in the cafeteria corridor.



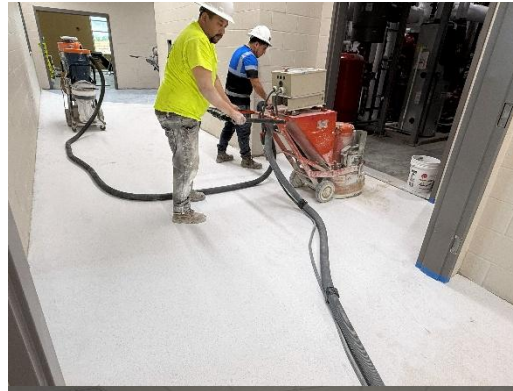
- m) Terrazzo was poured over most of the cafeteria corridor. This area had not been ground.



Blue arcs were poured in a similar manner to the stained concrete arcs at East Middle School.



- n) The terrazzo corridor in the music suite was being ground. Workers were trying to keep dust levels down as the grinding generated it.



- o) Concrete slabs were being ground in Area D. The slab was polished in the Computer Room allowing the casework to be installed.



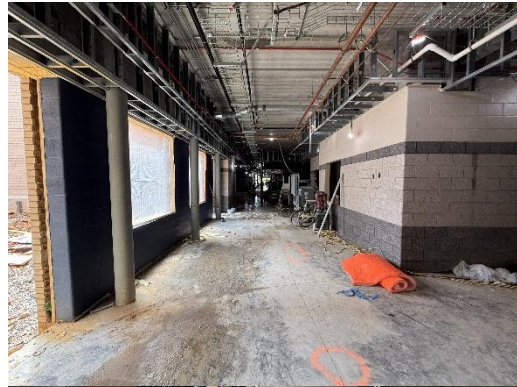
- p) The gym was cleaned and appeared ready to receive the wood strip flooring system. Jeremy continues to monitor moisture levels for the required humidity which must be confirmed before installation can begin.



- q) The main corridor will continue to be open until the glass curtainwall system can be installed.



- r) It appeared that a good job is being done to keep the main corridor clean, but until the windows are installed rain will enter the area.



- s) Prime coats of wall paint were being applied in the classroom wings.



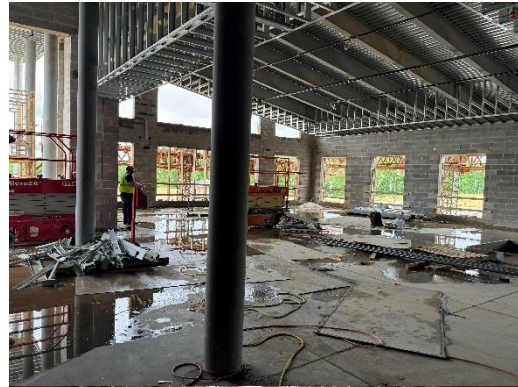
- t) The roof drainage system was installed over the main corridor. Once the base course of roofing is in place, the corridor will be dried in from above.



- u) The roof installation over the south entrance was ongoing. The vapor barrier for the sloped metal roof was in place.



- v) Light gauge metal framing for soffits such as these in the library were being installed.



- w) The mechanical platforms over the classroom wings provide an easily accessible area to install HVAC equipment.



- x) Fall protection was in place at the opening for the vertical ladders at the end of the mechanical platforms over the classroom wings.



- y) Ice and snow guards were being installed on the sloped metal roofing over Area D.



3. Stored Material Observed:

- a) Concrete accessories.
- b) Concrete block, brick and accessories.
- c) Window systems.
- d) Finishes including paint, terrazzo, and floor polishing materials.
- e) Kitchen equipment.
- f) Casework.
- g) Sanitary piping and fittings,
- h) Mechanical ductwork, units, GRDs, and equipment.
- i) Electrical conduits, fixtures, trim and fittings.

4. Follow up items:

- a) Final special inspection reports with emphasis on the storm shelter area.
- b) Keep as-builts up to date.
- c) Make corrections as indicated in the above ceiling report and alert JRA when the corrections are made.

Follow up by:

- Architect, Owner, MEP Engineer, Structural Engineer,
 Civil Engineer Construction Manager, Other

Respectfully submitted,

JRA Architects

Joseph Jones, AIA, Construction Contract Administrator

Cc: 202280, CA8, HCS, Wehr, Icon, STW, EDG, JRA