



Purofirst Disaster Services

2251 Stanley Gault Parkway
Louisville, Kentucky 40223

Client: Anchorage Public School (Water Fountain)
Property: 11400 Ridge Rd.
Anchorage, KY 40223

Home: (502) 245-2121

Operator: PKING

Estimator: Phillip King
Business: 2251 Stanley Gault Pkwy
Louisville, KY 40223

Business: (502) 295-4820
E-mail: pking@purofirst.com

Type of Estimate: Water Damage
Date Entered: 4/7/2026

Date Assigned: 4/7/2026

Price List: KYLO8X_APR26
Labor Efficiency: Restoration/Service/Remodel
Estimate: 26-0360-EME

We would like to take this opportunity to thank you for choosing Purofirst as your first and best choice for all of your disaster restoration needs. We pride ourselves on quality workmanship and proper communication. The following is a few of the basics you need to be aware of from step one:

1. The accuracy of this estimate is limited to what we were able to visually inspect. This estimate and scope of work represents our professional opinion to restore the property to "pre-loss" condition and in no way reflects any interest or impact on the final settlement. Ultimately, it is you and your insurance company to come to an agreed upon settlement of your loss.
2. You are responsible for your possessions and valuables. We will have workman visiting your home. You must secure and protect all valuables, pets, firearms, decorations, antiques, and furnishings.
3. Pre-existing damages or conditions to the property not related to this loss are not included in this scope of work and/or contract. (Example- scratched or dented doors, dented wood, chipped paint, torn or worn flooring, aged siding or shingles.)
4. All accounts must be paid in full before any contents pack backs are scheduled. The pack back can be scheduled a minimum of 24 hours after the final payment is received. This is a firm policy of Purofirst and is not deviated from.
5. Any deviations from the original estimate need to be communicated to your Loss Claims Specialist at Purofirst before any work is done (i.e. change orders, hidden damages, etc.) Any owner orchestrated change orders must be thoroughly discussed and properly costed before any work is done. Change orders that are not related to insurance covered work (i.e. owner upgrades and extras) are charged as \$100 per change order plus the cost of the actual work to be done. All change orders will be signed off on by the homeowner and paid in full before the work is done. Please be aware that change orders slow down the restoration process and should be carefully considered.
6. No warranty either expressed or implied will be valid on any roof patches or repairs that are completed.



Purofirst Disaster Services

2251 Stanley Gault Parkway
Louisville, Kentucky 40223

26-0360-EME

26-0360-EME

DESCRIPTION	QTY	UNIT PRICE	TOTAL
1. Cleaning & Remediation - Supervisory - per hr	8.00 HR @	66.64 =	533.12
2. Emergency service call - during business hours	1.00 EA @	177.71 =	177.71
3. Equipment setup, take down, and monitoring (hourly charge)	20.00 HR @	64.25 =	1,285.00
4. Haul debris - per pickup truck load - including dump fees	2.00 EA @	166.51 =	333.02

Level 2

Level 2

DESCRIPTION	QTY	UNIT PRICE	TOTAL
5. Water extraction from hard surface floor	1,000.00 SF @	0.29 =	290.00
6. Add for HEPA filter (for canister/backpack vacuums)	1.00 EA @	91.78 =	91.78

Room 229

Height: 10'

DESCRIPTION	QTY	UNIT PRICE	TOTAL
7. Content Manipulation charge - per hour	2.00 HR @	48.35 =	96.70
8. Block and pad furniture in room	1.00 EA @	57.57 =	57.57
9. Protect contents - Cover with plastic	700.00 SF @	0.24 =	168.00
10. Tear out cove base molding	57.50 LF @	0.43 =	24.73
11. Tear out wet drywall, cleanup, bag, per LF - up to 2' tall	37.50 LF @	4.13 =	154.88
12. Tear out and bag wet insulation, per LF - to 2' tall	37.50 LF @	1.65 =	61.88
13. Apply anti-microbial agent to the surface area	200.00 SF @	0.31 =	62.00
14. Clean stud wall	75.00 SF @	1.06 =	79.50
15. HEPA Vacuuming - hourly charge	1.00 HR @	67.54 =	67.54
16. Clean floor	120.00 SF @	0.56 =	67.20
17. Air mover (per 24 hour period) - No monitoring 2 air movers for 1 day	2.00 EA @	28.00 =	56.00
18. Dehumidifier (per 24 hr period)- 110-159 ppd - No monitor. 1 DH for 3 days	3.00 EA @	116.16 =	348.48
19. Drill holes for wall cavity drying	12.00 EA @	0.64 =	7.68
20. Wall cavity drying-Inj. type (per 24 hr period) No monit.	3.00 DA @	141.00 =	423.00

Room 227

Height: 10'

DESCRIPTION	QTY	UNIT PRICE	TOTAL
21. Content Manipulation charge - per hour	2.00 HR @	48.35 =	96.70



Purofirst Disaster Services

2251 Stanley Gault Parkway
Louisville, Kentucky 40223

CONTINUED - Room 227

DESCRIPTION	QTY	UNIT PRICE	TOTAL
22. Block and pad furniture in room	1.00 EA @	57.57 =	57.57
23. Protect contents - Cover with plastic	700.00 SF @	0.24 =	168.00
24. Tear out cove base molding	95.00 LF @	0.43 =	40.85
25. Tear out wet drywall, cleanup, bag, per LF - up to 2' tall	75.00 LF @	4.13 =	309.75
26. Tear out and bag wet insulation, per LF - to 2' tall	75.00 LF @	1.65 =	123.75
27. Apply anti-microbial agent to the surface area	400.00 SF @	0.31 =	124.00
28. Clean stud wall	150.00 SF @	1.06 =	159.00
29. HEPA Vacuuming - hourly charge	2.00 HR @	67.54 =	135.08
30. Clean floor	280.00 SF @	0.56 =	156.80
31. Dehumidifier (per 24 hr period)- 110-159 ppd - No monitor. 1 DH for 3 days	3.00 EA @	116.16 =	348.48
32. Air mover (per 24 hour period) - No monitoring 4 air movers for 1 day	4.00 EA @	28.00 =	112.00
33. Drill holes for wall cavity drying	9.00 EA @	0.64 =	5.76
34. Wall cavity drying-Inj. type (per 24 hr period) No monit.	3.00 DA @	141.00 =	423.00

Room 225

Height: 10'

DESCRIPTION	QTY	UNIT PRICE	TOTAL
35. Content Manipulation charge - per hour	2.00 HR @	48.35 =	96.70
36. Block and pad furniture in room	1.00 EA @	57.57 =	57.57
37. Protect contents - Cover with plastic	600.00 SF @	0.24 =	144.00
38. Tear out cove base molding	86.50 LF @	0.43 =	37.20
39. Tear out wet drywall, cleanup, bag, per LF - up to 2' tall	66.50 LF @	4.13 =	274.65
40. Tear out and bag wet insulation, per LF - to 2' tall	66.50 LF @	1.65 =	109.73
41. Apply anti-microbial agent to the surface area	350.00 SF @	0.31 =	108.50
42. Clean stud wall	130.00 SF @	1.06 =	137.80
43. HEPA Vacuuming - hourly charge	2.00 HR @	67.54 =	135.08
44. Clean floor	280.00 SF @	0.56 =	156.80
45. Air mover (per 24 hour period) - No monitoring 2 air movers for 1 day	2.00 EA @	28.00 =	56.00
46. Dehumidifier (per 24 hr period)- 110-159 ppd - No monitor. 1 DH for 3 days	3.00 EA @	116.16 =	348.48
47. Drill holes for wall cavity drying	9.00 EA @	0.64 =	5.76
48. Wall cavity drying-Inj. type (per 24 hr period) No monit.	3.00 DA @	141.00 =	423.00



Purofirst Disaster Services

2251 Stanley Gault Parkway
Louisville, Kentucky 40223

CONTINUED - Room 225

DESCRIPTION	QTY	UNIT PRICE	TOTAL
-------------	-----	------------	-------

Room 223

Height: 10'

DESCRIPTION	QTY	UNIT PRICE	TOTAL
49. Content Manipulation charge - per hour	2.00 HR @	48.35 =	96.70
50. Protect contents - Cover with plastic	600.00 SF @	0.24 =	144.00
51. Tear out cove base molding	80.00 LF @	0.43 =	34.40
52. Tear out wet drywall, cleanup, bag, per LF - up to 2' tall	65.00 LF @	4.13 =	268.45
53. Tear out and bag wet insulation, per LF - to 2' tall	65.00 LF @	1.65 =	107.25
54. Apply anti-microbial agent to the surface area	350.00 SF @	0.31 =	108.50
55. Clean stud wall	130.00 SF @	1.06 =	137.80
56. HEPA Vacuuming - hourly charge	2.00 HR @	67.54 =	135.08
57. Clean floor	240.00 SF @	0.56 =	134.40
58. Air mover (per 24 hour period) - No monitoring 3 air movers for 1 day	3.00 EA @	28.00 =	84.00
59. Dehumidifier (per 24 hr period)- 110-159 ppd - No monitor. 1 DH for 3 days	3.00 EA @	116.16 =	348.48

Room 221

Height: 10'

DESCRIPTION	QTY	UNIT PRICE	TOTAL
60. Content Manipulation charge - per hour	2.00 HR @	48.35 =	96.70
61. Protect contents - Cover with plastic	700.00 SF @	0.24 =	168.00
62. Tear out cove base molding	37.50 LF @	0.43 =	16.13
63. Tear out wet drywall, cleanup, bag, per LF - up to 2' tall	37.50 LF @	4.13 =	154.88
64. Tear out and bag wet insulation, per LF - to 2' tall	37.50 LF @	1.65 =	61.88
65. Apply anti-microbial agent to the surface area	200.00 SF @	0.31 =	62.00
66. Clean stud wall	75.00 SF @	1.06 =	79.50
67. HEPA Vacuuming - hourly charge	1.00 HR @	67.54 =	67.54
68. Clean floor	120.00 SF @	0.56 =	67.20
69. Air mover (per 24 hour period) - No monitoring 2 air movers for 1 day	2.00 EA @	28.00 =	56.00



Purofirst Disaster Services

2251 Stanley Gault Parkway
Louisville, Kentucky 40223

CONTINUED - Room 221

DESCRIPTION	QTY	UNIT PRICE	TOTAL
70. Dehumidifier (per 24 hr period)- 110-159 ppd - No monitor. 1 DH for 3 days	3.00 EA @	116.16 =	348.48

Hallway

Height: 10'

DESCRIPTION	QTY	UNIT PRICE	TOTAL
71. Apply anti-microbial agent to part of the floor	473.10 SF @	0.31 =	146.66
72. Air mover (per 24 hour period) - No monitoring 5 air movers for 3 days	15.00 EA @	28.00 =	420.00
73. Dehumidifier (per 24 hr period)- 110-159 ppd - No monitor. 2 DH for 3 days	6.00 EA @	116.16 =	696.96
74. Negative air fan/Air scrubber (24 hr period) - No monit. 1 AS for 3 days, 1 additional for 4 days during drywall install and cleaning	7.00 DA @	76.54 =	535.78
75. Add for HEPA filter (for neg. air machine/vacuum - Large)	2.00 EA @	332.28 =	664.56

Main Level

Main Level

DESCRIPTION	QTY	UNIT PRICE	TOTAL
76. Water extraction from hard surface floor	1,000.00 SF @	0.29 =	290.00
77. Add for HEPA filter (for canister/backpack vacuums)	1.00 EA @	91.78 =	91.78

Room 121

Height: 10'

DESCRIPTION	QTY	UNIT PRICE	TOTAL
78. Remove wet suspended ceiling tile and bag for disposal	4.00 SF @	0.48 =	1.92
79. Air mover (per 24 hour period) - No monitoring 2 air movers for 1 day	2.00 EA @	28.00 =	56.00



Purofirst Disaster Services

2251 Stanley Gault Parkway
Louisville, Kentucky 40223

Room 122

Height: 10'

DESCRIPTION	QTY	UNIT PRICE	TOTAL
80. Remove wet suspended ceiling tile and bag for disposal	8.00 SF @	0.48 =	3.84
81. Content Manipulation charge - per hour	2.00 HR @	48.35 =	96.70
82. Protect contents - Cover with plastic	200.00 SF @	0.24 =	48.00
83. Tear out cove base molding	50.00 LF @	0.43 =	21.50
84. Tear out wet drywall, cleanup, bag, per LF - up to 2' tall	37.50 LF @	4.13 =	154.88
85. Tear out and bag wet insulation, per LF - to 2' tall	37.50 LF @	1.65 =	61.88
86. Apply anti-microbial agent to the surface area	200.00 SF @	0.31 =	62.00
87. Clean stud wall	75.00 SF @	1.06 =	79.50
88. HEPA Vacuuming - hourly charge	1.00 HR @	67.54 =	67.54
89. Clean floor	120.00 SF @	0.56 =	67.20
90. Air mover (per 24 hour period) - No monitoring 3 air movers for 1 day	3.00 EA @	28.00 =	84.00
91. Dehumidifier (per 24 hr period)- 110-159 ppd - No monitor. 1 DH for 3 days	3.00 EA @	116.16 =	348.48

Room 123

Height: 10'

DESCRIPTION	QTY	UNIT PRICE	TOTAL
92. Remove wet suspended ceiling tile and bag for disposal	56.00 SF @	0.48 =	26.88
93. Content Manipulation charge - per hour	0.50 HR @	48.35 =	24.18
94. Protect contents - Cover with plastic	150.00 SF @	0.24 =	36.00
95. Tear out cove base molding	63.00 LF @	0.43 =	27.09
96. Tear out wet drywall, cleanup, bag, per LF - up to 2' tall	25.00 LF @	4.13 =	103.25
97. Tear out and bag wet insulation, per LF - to 2' tall	25.00 LF @	1.65 =	41.25
98. Apply anti-microbial agent to the surface area	150.00 SF @	0.31 =	46.50
99. Clean stud wall	50.00 SF @	1.06 =	53.00
100. HEPA Vacuuming - hourly charge	1.00 HR @	67.54 =	67.54
101. Clean floor	100.00 SF @	0.56 =	56.00
102. Air mover (per 24 hour period) - No monitoring 1 air movers for 1 day	1.00 EA @	28.00 =	28.00
103. Dehumidifier (per 24 hr period)- 110-159 ppd - No monitor. 1 DH for 3 days	3.00 EA @	116.16 =	348.48
104. Drill holes for wall cavity drying	11.00 EA @	0.64 =	7.04
105. Wall cavity drying-Inj. type (per 24 hr period) No monit.	3.00 DA @	141.00 =	423.00

Room 124

Height: 10'



Purofirst Disaster Services

2251 Stanley Gault Parkway
Louisville, Kentucky 40223

DESCRIPTION	QTY	UNIT PRICE	TOTAL
106. Content Manipulation charge - per hour	2.00 HR @	48.35 =	96.70
107. Protect contents - Cover with plastic	500.00 SF @	0.24 =	120.00
108. Tear out cove base molding	25.00 LF @	0.43 =	10.75
109. Apply anti-microbial agent to the surface area	100.00 SF @	0.31 =	31.00
110. Air mover (per 24 hour period) - No monitoring 1 air movers for 1 day	1.00 EA @	28.00 =	28.00
111. Dehumidifier (per 24 hr period)- 110-159 ppd - No monitor. 1 DH for 3 days	3.00 EA @	116.16 =	348.48
112. Drill holes for wall cavity drying	16.00 EA @	0.64 =	10.24
113. Wall cavity drying-Inj. type (per 24 hr period) No monit.	3.00 DA @	141.00 =	423.00

Hallway

Height: 10'

DESCRIPTION	QTY	UNIT PRICE	TOTAL
114. Remove wet suspended ceiling tile and bag for disposal	80.00 SF @	0.48 =	38.40
115. Apply anti-microbial agent to part of the floor	350.33 SF @	0.31 =	108.60
116. Air mover (per 24 hour period) - No monitoring 3 air movers for 3 days	9.00 EA @	28.00 =	252.00
117. Dehumidifier (per 24 hr period)- 110-159 ppd - No monitor. 1 DH for 3 days	3.00 EA @	116.16 =	348.48
118. Negative air fan/Air scrubber (24 hr period) - No monit. 1 AS for 3 days, 1 additional for 4 days during drywall install, and cleaning	7.00 DA @	76.54 =	535.78
119. Add for HEPA filter (for neg. air machine/vacuum - Large)	2.00 EA @	332.28 =	664.56

Copy Room

Height: 10'

DESCRIPTION	QTY	UNIT PRICE	TOTAL
120. Remove wet suspended ceiling tile and bag for disposal	6.00 SF @	0.48 =	2.88
121. Apply anti-microbial agent to part of the floor	34.72 SF @	0.31 =	10.76
122. Air mover (per 24 hour period) - No monitoring 2 air movers for 3 days	6.00 EA @	28.00 =	168.00



Purofirst Disaster Services

2251 Stanley Gault Parkway
Louisville, Kentucky 40223

Grand Total Areas:

17,332.00	SF Walls	10,642.12	SF Ceiling	27,974.12	SF Walls and Ceiling
10,642.12	SF Floor	1,182.46	SY Flooring	1,739.83	LF Floor Perimeter
0.00	SF Long Wall	0.00	SF Short Wall	1,739.83	LF Ceil. Perimeter
10,642.12	Floor Area	11,053.34	Total Area	17,332.00	Interior Wall Area
7,876.50	Exterior Wall Area	719.50	Exterior Perimeter of Walls		
0.00	Surface Area	0.00	Number of Squares	0.00	Total Perimeter Length
0.00	Total Ridge Length	0.00	Total Hip Length		



Purofirst Disaster Services

2251 Stanley Gault Parkway
Louisville, Kentucky 40223

Summary

Line Item Total	20,000.19
Replacement Cost Value	\$20,000.19
Net Claim	\$20,000.19

Phillip King

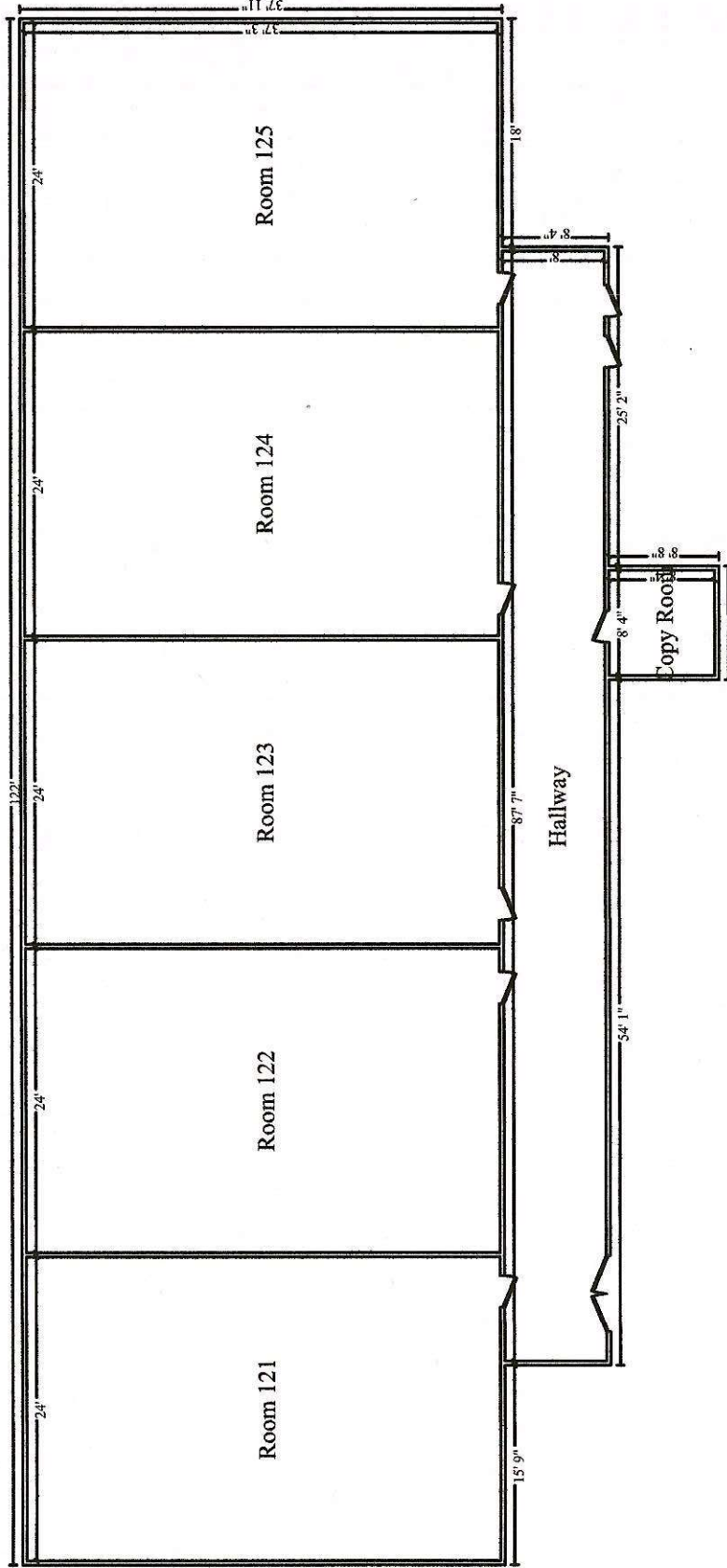


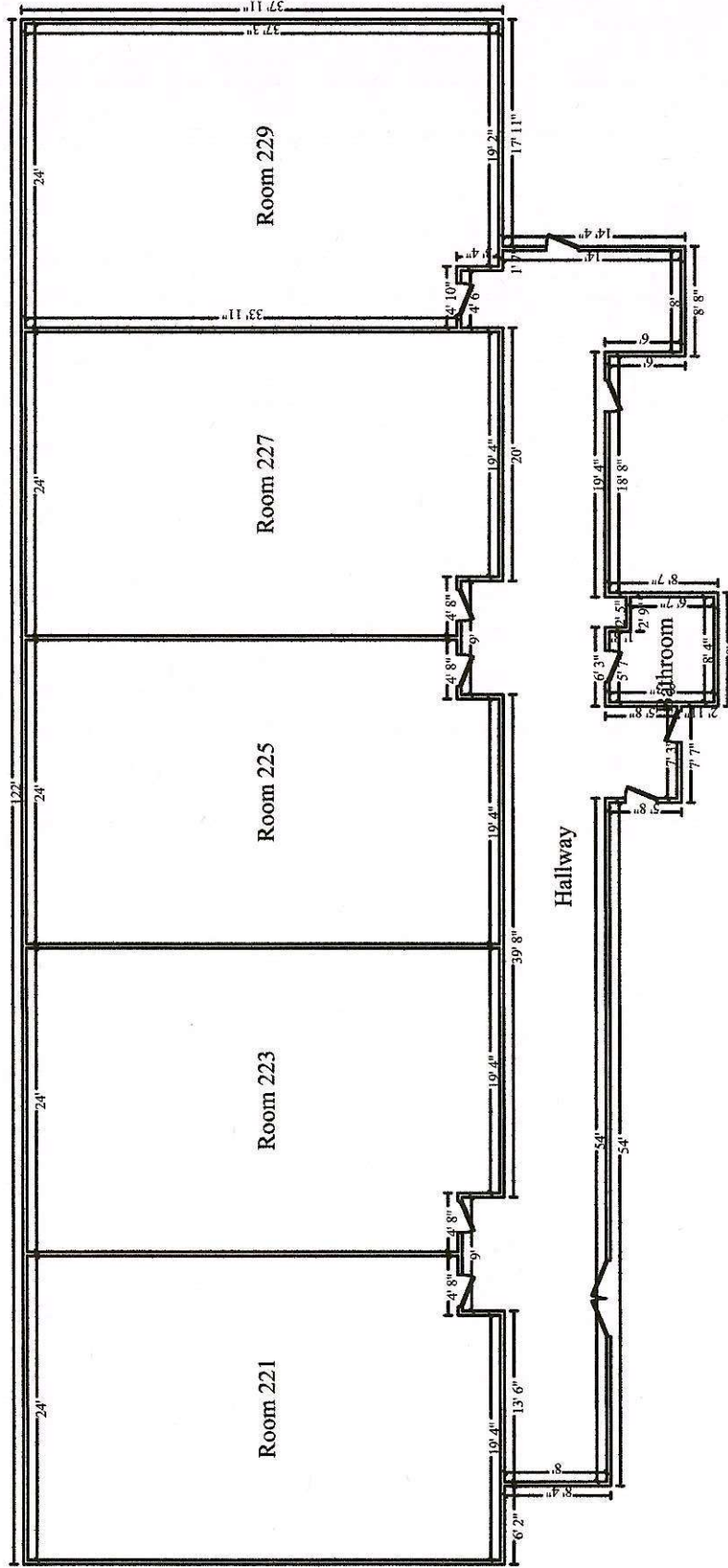
Purofirst Disaster Services

2251 Stanley Gault Parkway
Louisville, Kentucky 40223

Recap by Category

Items	Total	%
CLEANING	1,431.70	7.16%
CONTENT MANIPULATION	1,697.08	8.49%
GENERAL DEMOLITION	2,607.95	13.04%
WATER EXTRACTION & REMEDIATION	14,263.46	71.32%
Subtotal	20,000.19	100.00%







Purofirst Disaster Services

2251 Stanley Gault Parkway
Louisville, Kentucky 40223

Client: Anchorage Public School (Water Fountain)
Property: 11400 Ridge Rd.
Anchorage, KY 40223

Home: (502) 245-2121

Operator: PKING

Estimator: Phillip King
Business: 2251 Stanley Gault Pkwy
Louisville, KY 40223

Business: (502) 295-4820
E-mail: pking@purofirst.com

Type of Estimate: Water Damage
Date Entered: 4/7/2026

Date Assigned: 4/7/2026

Price List: KYLO8X_APR26
Labor Efficiency: Restoration/Service/Remodel
Estimate: 26-0360-STR

We would like to take this opportunity to thank you for choosing Purofirst as your first and best choice for all of your disaster restoration needs. We pride ourselves on quality workmanship and proper communication. The following is a few of the basics you need to be aware of from step one:

1. The accuracy of this estimate is limited to what we were able to visually inspect. This estimate and scope of work represents our professional opinion to restore the property to "pre-loss" condition and in no way reflects any interest or impact on the final settlement. Ultimately, it is you and your insurance company to come to an agreed upon settlement of your loss.
2. You are responsible for your possessions and valuables. We will have workman visiting your home. You must secure and protect all valuables, pets, firearms, decorations, antiques, and furnishings.
3. Pre-existing damages or conditions to the property not related to this loss are not included in this scope of work and/or contract. (Example- scratched or dented doors, dented wood, chipped paint, torn or worn flooring, aged siding or shingles.)
4. All accounts must be paid in full before any contents pack backs are scheduled. The pack back can be scheduled a minimum of 24 hours after the final payment is received. This is a firm policy of Purofirst and is not deviated from.
5. Any deviations from the original estimate need to be communicated to your Loss Claims Specialist at Purofirst before any work is done (i.e. change orders, hidden damages, etc.) Any owner orchestrated change orders must be thoroughly discussed and properly costed before any work is done. Change orders that are not related to insurance covered work (i.e. owner upgrades and extras) are charged as \$100 per change order plus the cost of the actual work to be done. All change orders will be signed off on by the homeowner and paid in full before the work is done. Please be aware that change orders slow down the restoration process and should be carefully considered.
6. No warranty either expressed or implied will be valid on any roof patches or repairs that are completed.



Purofirst Disaster Services

2251 Stanley Gault Parkway
Louisville, Kentucky 40223

26-0360-STR

26-0360-STR

DESCRIPTION	QTY	UNIT PRICE	TOTAL
1. Cleaning & Remediation - Supervisory - after hours	8.00 HR @	100.06 =	800.48
2. Cleaning Technician - after hours	80.00 HR @	81.34 =	6,507.20
crew of 10 for 8 hours on Saturday to do a final clean of the hallways, classrooms and stairwell. move content back to it's spots as well.			

Level 2

Room 229

Height: 10'

DESCRIPTION	QTY	UNIT PRICE	TOTAL
3. Content Manipulation charge - per hour	2.00 HR @	48.35 =	96.70
4. Floor protection - heavy paper and tape	120.00 SF @	0.43 =	51.60
5. Acoustical/fire-safing insulation - 4" mineral wool	45.00 SF @	2.05 =	92.25
6. 5/8" - drywall per LF - up to 2' tall	37.50 LF @	12.75 =	478.13
7. Tape joint for new to existing drywall - per LF	37.50 LF @	8.25 =	309.38
8. Seal the surface area w/PVA primer - one coat	120.00 SF @	0.58 =	69.60
9. Paint the surface area - two coats	120.00 SF @	1.02 =	122.40
10. Cove base molding - rubber or vinyl, 4" high	57.50 LF @	2.64 =	151.80

Room 227

Height: 10'

DESCRIPTION	QTY	UNIT PRICE	TOTAL
11. Content Manipulation charge - per hour	2.00 HR @	48.35 =	96.70
12. Floor protection - heavy paper and tape	225.00 SF @	0.43 =	96.75
13. Acoustical/fire-safing insulation - 4" mineral wool	45.00 SF @	2.05 =	92.25
14. 5/8" - drywall per LF - up to 2' tall	75.00 LF @	12.75 =	956.25
15. Tape joint for new to existing drywall - per LF	75.00 LF @	8.25 =	618.75
16. Seal the surface area w/PVA primer - one coat	225.00 SF @	0.58 =	130.50
17. Paint the surface area - two coats	225.00 SF @	1.02 =	229.50
18. Cove base molding - rubber or vinyl, 4" high	95.00 LF @	2.64 =	250.80

Room 225

Height: 10'

DESCRIPTION	QTY	UNIT PRICE	TOTAL
19. Content Manipulation charge - per hour	2.00 HR @	48.35 =	96.70
20. Floor protection - heavy paper and tape	200.00 SF @	0.43 =	86.00
21. Acoustical/fire-safing insulation - 4" mineral wool	45.00 SF @	2.05 =	92.25



Purofirst Disaster Services

2251 Stanley Gault Parkway
Louisville, Kentucky 40223

CONTINUED - Room 225

DESCRIPTION	QTY	UNIT PRICE	TOTAL
22. 5/8" - drywall per LF - up to 2' tall	66.50 LF @	12.75 =	847.88
23. Tape joint for new to existing drywall - per LF	66.50 LF @	8.25 =	548.63
24. Seal the surface area w/PVA primer - one coat	200.00 SF @	0.58 =	116.00
25. Paint the surface area - two coats	200.00 SF @	1.02 =	204.00
26. Cove base molding - rubber or vinyl, 4" high	86.50 LF @	2.64 =	228.36

Room 223

Height: 10'

DESCRIPTION	QTY	UNIT PRICE	TOTAL
27. Content Manipulation charge - per hour	2.00 HR @	48.35 =	96.70
28. Floor protection - heavy paper and tape	200.00 SF @	0.43 =	86.00
29. Acoustical/fire-safing insulation - 4" mineral wool	40.00 SF @	2.05 =	82.00
30. 5/8" - drywall per LF - up to 2' tall	65.00 LF @	12.75 =	828.75
31. Tape joint for new to existing drywall - per LF	65.00 LF @	8.25 =	536.25
32. Seal the surface area w/PVA primer - one coat	200.00 SF @	0.58 =	116.00
33. Paint the surface area - two coats	200.00 SF @	1.02 =	204.00
34. Cove base molding - rubber or vinyl, 4" high	80.00 LF @	2.64 =	211.20

Room 221

Height: 10'

DESCRIPTION	QTY	UNIT PRICE	TOTAL
35. Content Manipulation charge - per hour	2.00 HR @	48.35 =	96.70
36. Floor protection - heavy paper and tape	120.00 SF @	0.43 =	51.60
37. 5/8" - drywall per LF - up to 2' tall	37.50 LF @	12.75 =	478.13
38. Tape joint for new to existing drywall - per LF	37.50 LF @	8.25 =	309.38
39. Seal the surface area w/PVA primer - one coat	120.00 SF @	0.58 =	69.60
40. Paint the surface area - two coats	120.00 SF @	1.02 =	122.40
41. Cove base molding - rubber or vinyl, 4" high	37.50 LF @	2.64 =	99.00

Main Level



Purofirst Disaster Services

2251 Stanley Gault Parkway
Louisville, Kentucky 40223

Room 121

Height: 10'

DESCRIPTION	QTY	UNIT PRICE	TOTAL
42. Suspended ceiling tile - 2' x 2'	4.00 SF @	3.71 =	14.84

Room 122

Height: 10'

DESCRIPTION	QTY	UNIT PRICE	TOTAL
43. Content Manipulation charge - per hour	2.00 HR @	48.35 =	96.70
44. Floor protection - heavy paper and tape	120.00 SF @	0.43 =	51.60
45. Suspended ceiling tile - 2' x 4'	8.00 SF @	3.60 =	28.80
46. Acoustical/fire-safing insulation - 4" mineral wool	45.00 SF @	2.05 =	92.25
47. 5/8" - drywall per LF - up to 2' tall	37.50 LF @	12.75 =	478.13
48. Tape joint for new to existing drywall - per LF	37.50 LF @	8.25 =	309.38
49. Seal the surface area w/PVA primer - one coat	120.00 SF @	0.58 =	69.60
50. Paint the surface area - two coats	140.00 SF @	1.02 =	142.80
51. Cove base molding - rubber or vinyl, 4" high	50.00 LF @	2.64 =	132.00

Room 123

Height: 10'

DESCRIPTION	QTY	UNIT PRICE	TOTAL
52. Content Manipulation charge - per hour	0.50 HR @	48.35 =	24.18
53. Floor protection - heavy paper and tape	120.00 SF @	0.43 =	51.60
54. Suspended ceiling tile - 2' x 4'	56.00 SF @	3.60 =	201.60
55. 5/8" - drywall per LF - up to 2' tall	25.00 LF @	12.75 =	318.75
56. Tape joint for new to existing drywall - per LF	25.00 LF @	8.25 =	206.25
57. Seal the surface area w/PVA primer - one coat	75.00 SF @	0.58 =	43.50
58. Paint the surface area - two coats	112.50 SF @	1.02 =	114.75
59. Cove base molding - rubber or vinyl, 4" high	84.00 LF @	2.64 =	221.76

Room 124

Height: 10'

DESCRIPTION	QTY	UNIT PRICE	TOTAL
60. Content Manipulation charge - per hour	2.00 HR @	48.35 =	96.70
61. Floor protection - heavy paper and tape	75.00 SF @	0.43 =	32.25
62. Suspended ceiling tile - 2' x 4'	16.00 SF @	3.60 =	57.60
63. Texture drywall - smooth / skim coat	25.00 SF @	1.78 =	44.50



Purofirst Disaster Services

2251 Stanley Gault Parkway
Louisville, Kentucky 40223

CONTINUED - Room 124

DESCRIPTION	QTY	UNIT PRICE	TOTAL
64. Paint the surface area - two coats	50.00 SF @	1.02 =	51.00
65. Cove base molding - rubber or vinyl, 4" high	46.00 LF @	2.64 =	121.44

Hallway

Height: 10'

DESCRIPTION	QTY	UNIT PRICE	TOTAL
66. Suspended ceiling tile - 2' x 2'	80.00 SF @	3.71 =	296.80

Copy Room

Height: 10'

DESCRIPTION	QTY	UNIT PRICE	TOTAL
67. Suspended ceiling tile - 2' x 4'	8.00 SF @	3.60 =	28.80

Labor Minimums Applied

DESCRIPTION	QTY	UNIT PRICE	TOTAL
68. Insulation labor minimum	1.00 EA @	115.23 =	115.23
69. Acoustic ceiling tile labor minimum	1.00 EA @	148.71 =	148.71



Purofirst Disaster Services

2251 Stanley Gault Parkway
Louisville, Kentucky 40223

Grand Total Areas:

17,332.00 SF Walls	10,642.12 SF Ceiling	27,974.12 SF Walls and Ceiling
10,642.12 SF Floor	1,182.46 SY Flooring	1,739.83 LF Floor Perimeter
0.00 SF Long Wall	0.00 SF Short Wall	1,739.83 LF Ceil. Perimeter
10,642.12 Floor Area	11,053.34 Total Area	17,332.00 Interior Wall Area
7,876.50 Exterior Wall Area	719.50 Exterior Perimeter of Walls	
0.00 Surface Area	0.00 Number of Squares	0.00 Total Perimeter Length
0.00 Total Ridge Length	0.00 Total Hip Length	



Purofirst Disaster Services

2251 Stanley Gault Parkway
Louisville, Kentucky 40223

Summary

Line Item Total	20,350.09
Overhead	2,035.07
Profit	2,035.07
	<hr/>
Replacement Cost Value	\$24,420.23
Net Claim	\$24,420.23
	<hr/> <hr/>

Phillip King



Purofirst Disaster Services

2251 Stanley Gault Parkway
Louisville, Kentucky 40223

Recap by Category

O&P Items	Total	%
ACOUSTICAL TREATMENTS	777.15	3.18%
CONTENT MANIPULATION	701.08	2.87%
DRYWALL	7,268.54	29.76%
FLOOR COVERING - VINYL	1,416.36	5.80%
INSULATION	566.23	2.32%
PAINTING	2,313.05	9.47%
WATER EXTRACTION & REMEDIATION	7,307.68	29.92%
O&P Items Subtotal	20,350.09	83.33%
Overhead	2,035.07	8.33%
Profit	2,035.07	8.33%
Total	24,420.23	100.00%

