



NEW: Submitted:
07/01/2026 05/12/2026

JOB TITLE:	PSYCHIATRIC NURSE PRACTITIONER HEALTH SERVICES
DIVISION	STUDENT SUPPORT & COMMUNITY ENGAGEMENT
SALARY SCHEDULE/GRADE:	II, GRADE 8
WORK YEAR:	AS APPROVED BY THE BOARD
FLSA STATUS:	EXEMPT
JOB CLASS CODE:	0000
BARGAINING UNIT:	CLAS

SCOPE OF RESPONSIBILITIES

Functions in an expanded psychiatric nurse practitioner role as defined by the Kentucky Board of Nursing. Provides direct mental health services including assessment, diagnosis, treatment, and follow-up care; prescribes medications as appropriate. Leads district efforts to integrate mental health and substance use prevention and treatment into the school setting. Serves as a bridge between the healthcare and education systems, ensuring students have access to necessary psychiatric, behavioral health, and substance use support. Works with Zone leaders, principals, and interdisciplinary teams to identify and address behavioral health barriers to student learning using data-informed strategies.

PERFORMANCE RESPONSIBILITIES & EVALUATION CRITERIA

Provides comprehensive psychiatric assessment, diagnosis, treatment planning, and prescribing of medications for students in alignment with the Kentucky Board of Nursing scope of practice and psychiatric clinical standards of care.

Conducts mental health screenings, crisis interventions, and follow-up care with a focus on early identification and management of mental health concerns that may impede learning.

Provides substance use prevention, early intervention, and follow-up services, including education, screening, brief counseling, and referral to treatment as needed.

Collaborates with families, educators, district staff, and community mental health and substance use providers to coordinate psychiatric and psychosocial care for students.

Obtains complete psychiatric, psychosocial, substance use, and medical histories and records findings in the district electronic health record (EHR).

Provides individual, group, and family counseling/therapy within scope of practice; makes referrals for specialized psychiatric, psychological, or substance use care when needed.

Promotes mental health and substance use wellness through preventive interventions, education, and training for staff, students, and families.

Provides consultation and professional development to school nurses, counselors, social workers, and administrators on mental health, trauma-informed care, behavioral interventions, and substance use prevention.

Ensures accurate documentation, reporting, and participation in Medicaid billing processes in accordance with district standards.

Completes department reporting requirements

Maintains current certification in psychiatric nursing practice, as well as CPR and first aid.

Serves as a resource for district initiatives related to behavioral health, suicide prevention, substance use prevention, and social-emotional learning.

Supports district efforts to address social determinants of health, equity, and access to mental health and substance use services, integrating data-driven approaches to reduce barriers to academic success.
Completes required trainings and compliance requirements by designated deadlines.
Performs other duties as assigned by supervisor
Regular, predictable performance is required for all performance responsibilities.
This position requires reporting to various worksites throughout JCPS based on caseload/programmatic assignment.

PHYSICAL DEMANDS

<p>This work is completed in an office, school, and clinical settings This position has both inside and outside environmental conditions, where protection from weather conditions is maintained while working inside. There are no protections from temperature changes or atmospheric conditions either inside or outside of work location.</p> <p>This position requires the following physical activities occasionally (up to 50% of the workweek): climbing, driving, kneeling, lifting, pushing and pulling up to 10lbs. The following physical activities are required frequently (up to 75% of the workweek): balancing, bending, feeling, reaching, and moving around the work setting. Grasping, repetitive motions with hands, hearing, talking, and visual acuity are required constantly (up to 100% of the workweek).</p>

MINIMUM QUALIFICATIONS

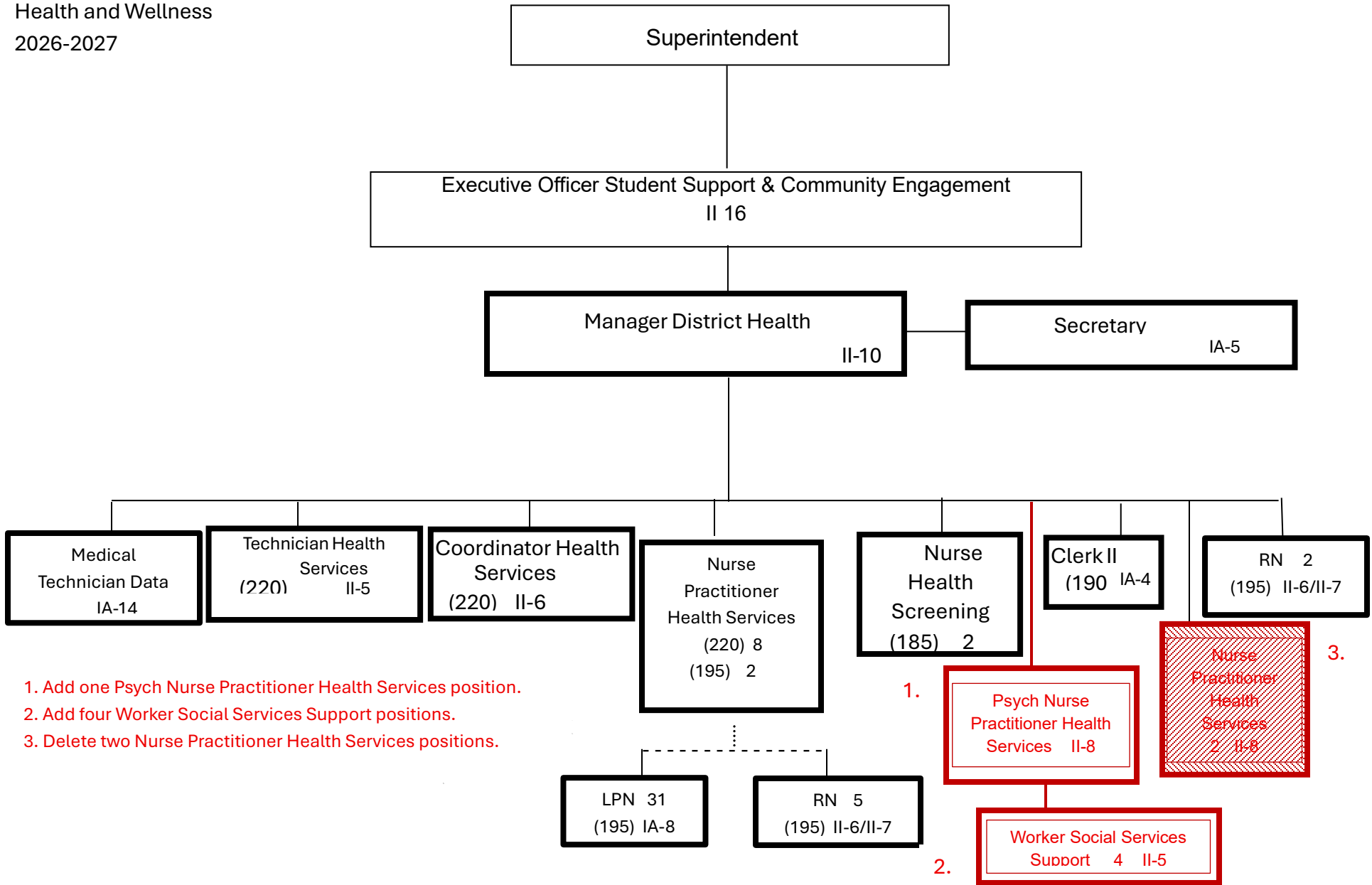
Current license as a Certified Advanced Practice Registered Nurse (APRN) Practitioner in the State of Kentucky or license recognized by the KY Board of Nursing through the interstate Compact with prescriptive authority.
Master's Degree
Current Psychiatric Nurse Practitioner Certification (PMHNP-BC)
Two (2) years of successful nursing experience
Effective communication skills

DESIRABLE QUALIFICATIONS

Experience working with children and adolescents in school, community, or outpatient psychiatric and substance use settings.
Supervisory experience
Training in trauma-informed care, crisis intervention, and culturally responsive mental health and substance use practices.
Experience working with diverse populations and families
Knowledge of evidence-based behavioral health and substance use prevention strategies in school settings.

Footnote

This position is categorically funded, and re-employment is subject to periodic review based on availability of funds and continued need for the project.



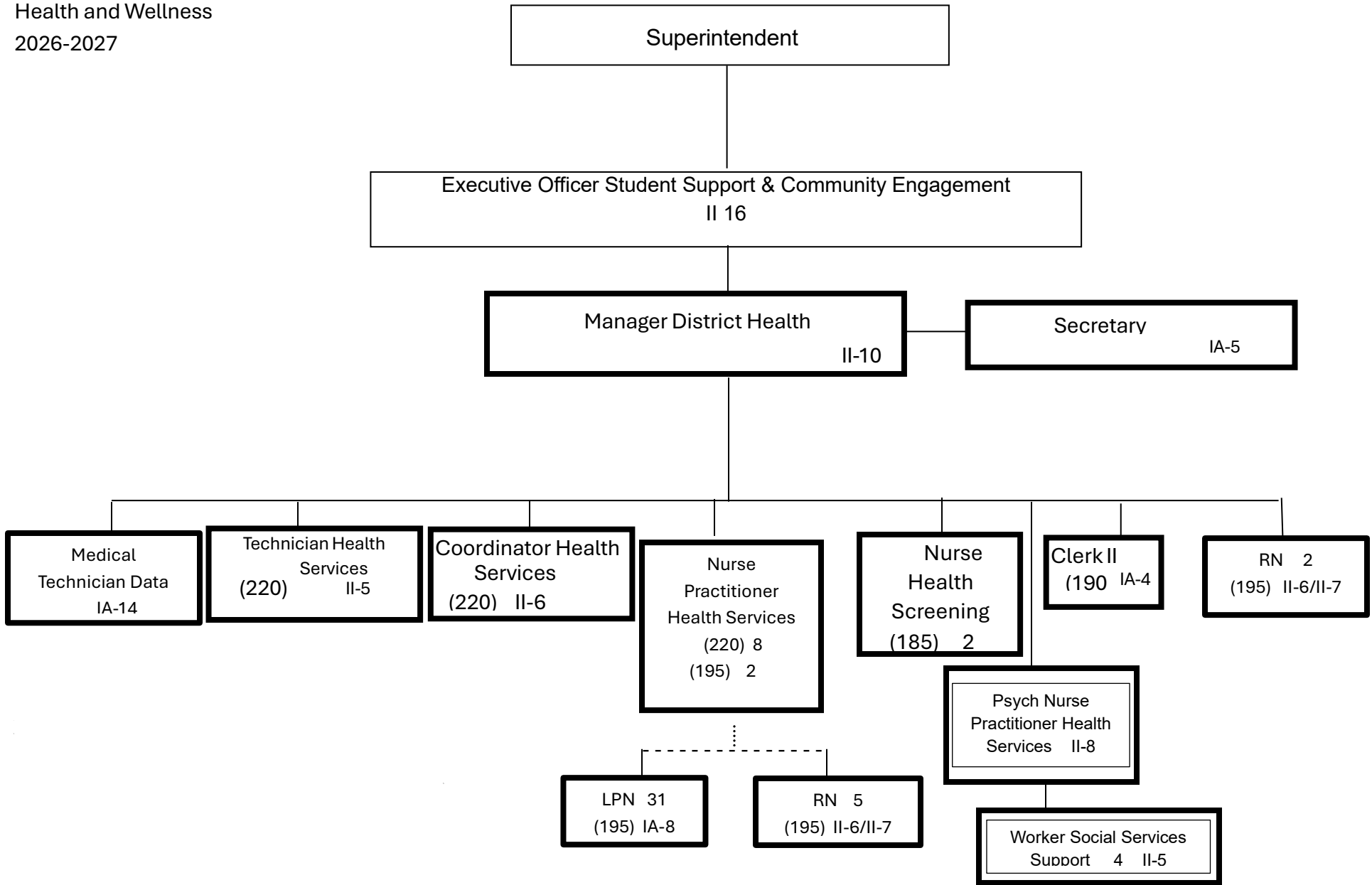
- 1. Add one Psych Nurse Practitioner Health Services position.
- 2. Add four Worker Social Services Support positions.
- 3. Delete two Nurse Practitioner Health Services positions.

Summary:

General Fund Positions: 58
 Categorical Fund Positions: 2 5

D-3

Submitted: ~~02/10/2026~~ 05/12/2026
 Effective: 07/01/2026



Summary:

General Fund Positions: 58
 Categorical Fund Positions: 5

D-3

Submitted: 05/12/2026
 Effective: 07/01/2026