

Update on FCPS Construction / Renovation Projects

April 27, 2026

Rise STEM Academy for Girls



Rise STEM Academy for Girls

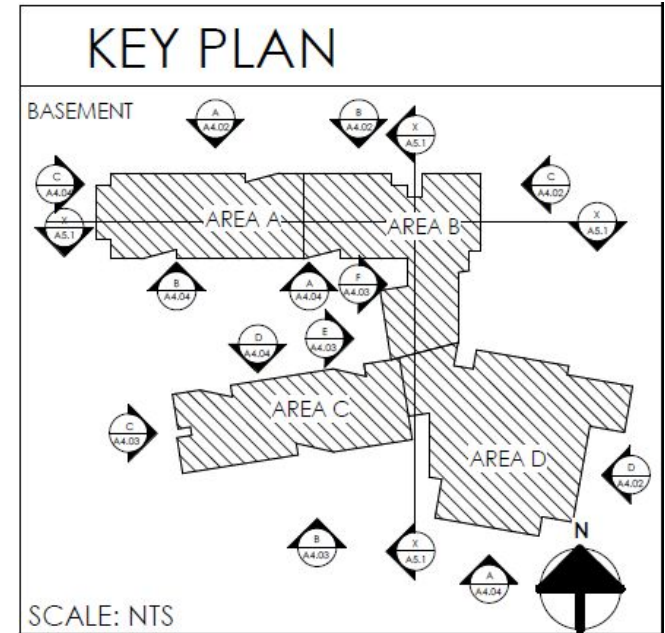


➤ Architect:	Ross Tarrant Architects
➤ General Contractor:	D.W. Wilburn, Inc.
➤ GC Contract Sum:	\$48,800,100.00
➤ Total Project Cost:	\$58,460,689.35
➤ Change Orders to Date (5):	\$1,003,548.74
➤ Scheduled Contract Completion Date:	June 2026
➤ % of Contract Completed:	88%
➤ Revised Completion Date per GC:	N/A
➤ Weekly Construction Updates:	www.fcps.net/risestem

Rise STEM Academy for Girls



- **Completed/Work in Progress:**
 - Continue floor prep for terrazzo.
 - Continued ceiling tile installation, wall painting, & mechanical rooms work.
 - LVT floor installation & air diffuser installation continued.
 - Wood doors and gym floor installation started.
 - Caseworks installation continued.
 - Locker installation completed.
- **Upcoming Work/Look Ahead:**
 - Gyp board installation and tile installation will continue.
 - Terrazzo installation and mechanical room work will continue.
 - LVT floor installation and ceiling tile installation will continue.
 - Painting and casework installation will continue.
 - Gym floor will continue.
 - Painting will continue.



Rise STEM Academy for Girls



Sodding Work In Progress



Week Ending April 3, 2026

Rise STEM Academy for Girls



Signage Installation In Progress



Week Ending April 3, 2026

Rise STEM Academy for Girls



Courtyard Concrete in Progress



Rise STEM Academy for Girls



Kitchen Loading Dock in Progress



Rise STEM Academy for Girls



Plumbing Fixtures Installation In Progress



Week Ending April 3, 2026

Rise STEM Academy for Girls



Drywall/ Soffit Work in Progress



Week Ending April 3, 2026

Rise STEM Academy for Girls



Gym Floor in Progress



Week Ending April 3, 2026

Henry Clay High (New)



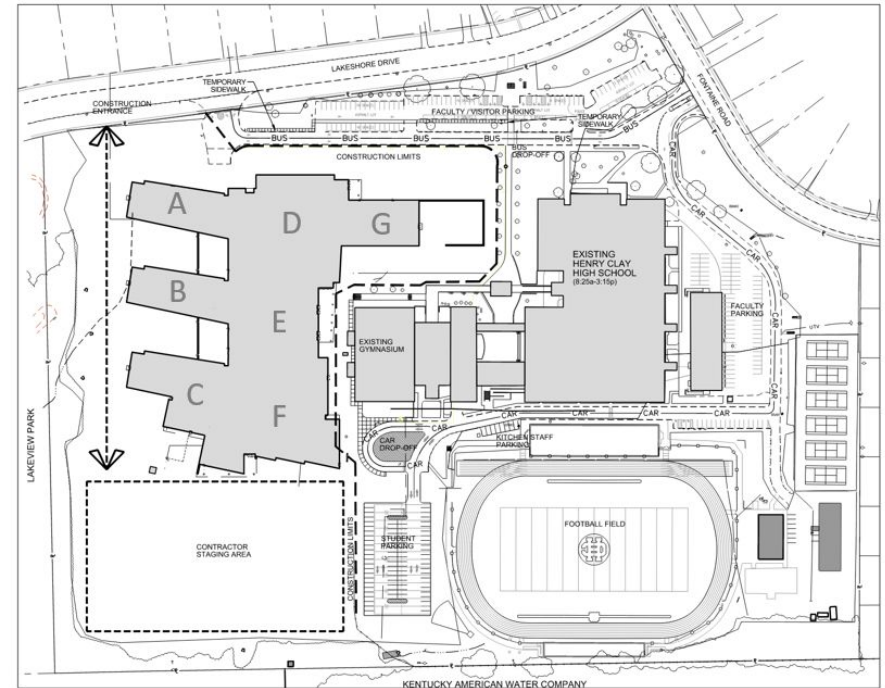
- Architect: Tate Hill Jacobs Architects
- General Contractor: D.W. Wilburn, Inc.
- GC Contract Sum: \$153,218,800.00
- Total Project Cost: \$178,900,227.60
- Change Orders to Date (4): \$833,615.59
- Scheduled Contract Completion Date: June 2028 (Building)
June 2029 (Site/Athletics)
- % of Contract Completed: 38%
- Revised Completion Date per GC: N/A
- Weekly Construction Updates: www.fcps.net/HCconstruction



Henry Clay High (New)

Completed/Work in Progress:

- Geothermal well field drilling at the south end of the site is complete.
- KAWC installation of main waterline is complete.
- ICF and CIP concrete formwork placing and pouring, and the installation of IFAs at ICF walls is in progress.
- Laying of CMU walls and the installation of hollow metal frames is underway.
- Under-slab plumbing/electrical and concrete slabs are in progress.
- Steel erection is underway in areas A, B and C.
- Area D hollowcore and joist erection is complete.
- Above ceiling MEP installation is in progress at areas A,B and C.
- Installation of Stairs A, B and C is complete.
- West driveway retaining wall construction is in progress.
- Interior metal stud wall framing in progress at Area A Level 1.



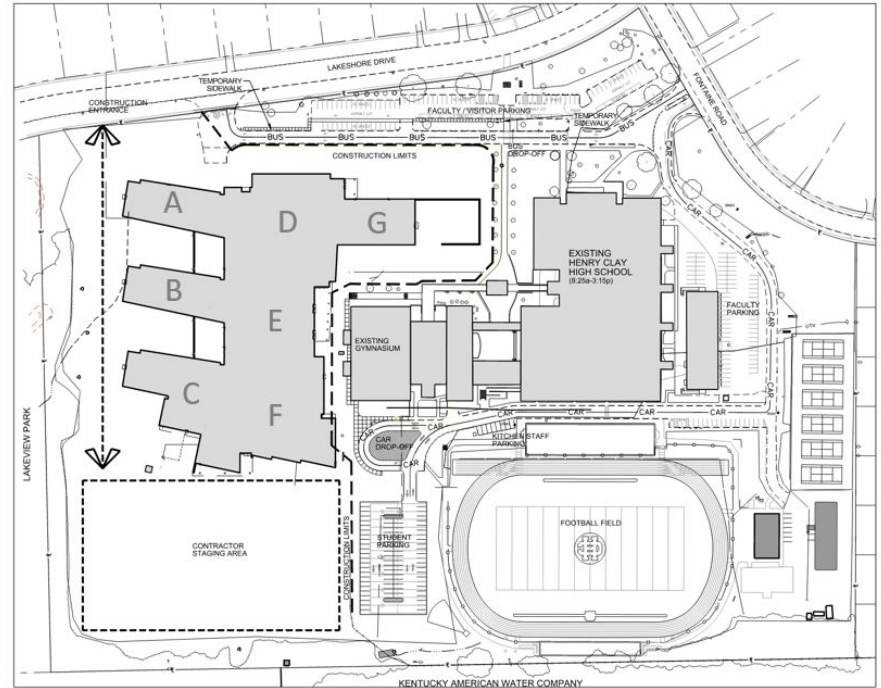
B PHASE 1 - BUILDING CONSTRUCTION CIRCULATION
SCALE: N.T.S.

Henry Clay High (New)



➤ Upcoming Work/Look Ahead:

- Continue hauling in fill materials and continue site grading.
- Continue sanitary piping and manholes.
- Continue with ICF and CIP concrete walls.
- Continue laying CMU walls.
- Continue with under-slab plumbing and electrical.
- Continue pouring concrete slabs on grade.
- Continue installing IFAs and hollow metal frames.
- Continue with steel erection.
- Continue with above ceiling MEP installation.
- Continue retaining wall construction.



B PHASE 1 - BUILDING CONSTRUCTION CIRCULATION
SCALE: N.T.S.



Henry Clay High (New)

Area A (Classroom Wing) Levels 1 & 2: Metal Stud Wall Framing and Installation of Hollow Metal Frames in Progress



Henry Clay High (New)



Area A (Classroom Wing): Level 3 Steel Erection & Above Ceiling MEP in Progress



Week Ending April 3, 2026



Henry Clay High (New)

Level 2 North-South Corridor: Steel Erection for Level 3 Floor Slab, ICF, CMU, and Hollow Metal Frame Installation Underway



Henry Clay High (New)



Level 2 North-South Corridor: ICF, CMU, and Hollow Metal Frame Installation Underway





Henry Clay High (New)

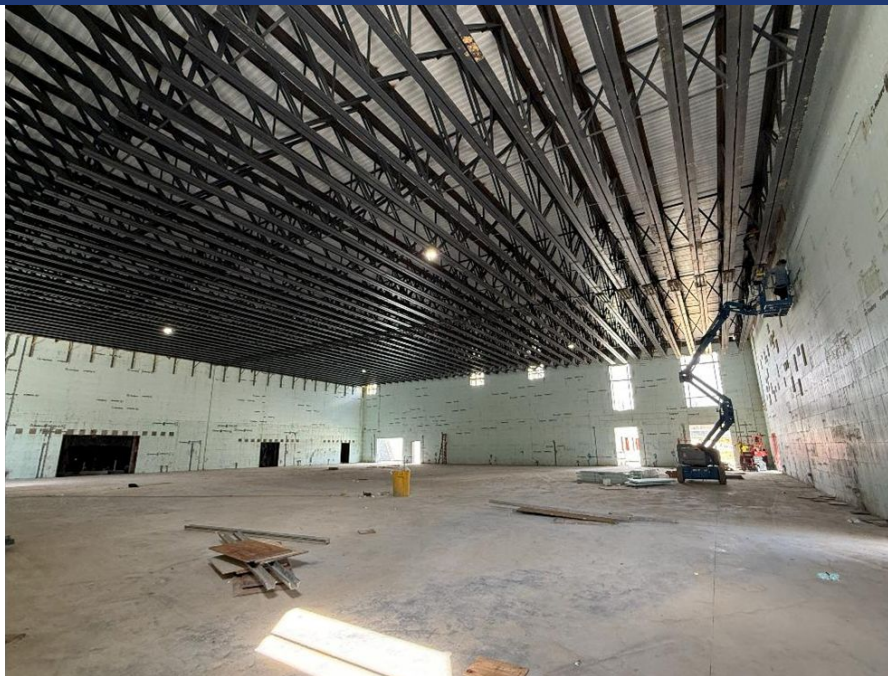
Left: Area B (Classroom Wing): Level 3 CMU and Hollow Metal Frame Installation is Underway
Right: Area C (Classroom Wing): Level 2 CMU and Hollow Metal Frame Installation is Underway



Henry Clay High (New)



Area D (Multi-Purpose Room): Storm Shelter ICF is Complete and Storm Shelter is Enclosed



Henry Clay High (New)



Area C (Cafeteria & Classroom Wing): Stair C Installation is Complete



Helen Caise Wade Elementary



Helen Caise Wade Elementary



- Architect: Sherman Carter Barnhart Architects
- Construction Manager (CM): Codell Construction
- Construction Contract Cost: \$41,446,729.12
- Total Project Cost: \$50,569,587.60
- Change Orders to Date (7): \$54,942.00
- Scheduled Contract Completion Date: July 2027
- % of Contract Completed: 31.87%
- Revised Completion Date per CM: N/A
- Weekly Construction Updates: www.fcps.net/GreendaleES

Helen Caise Wade Elementary

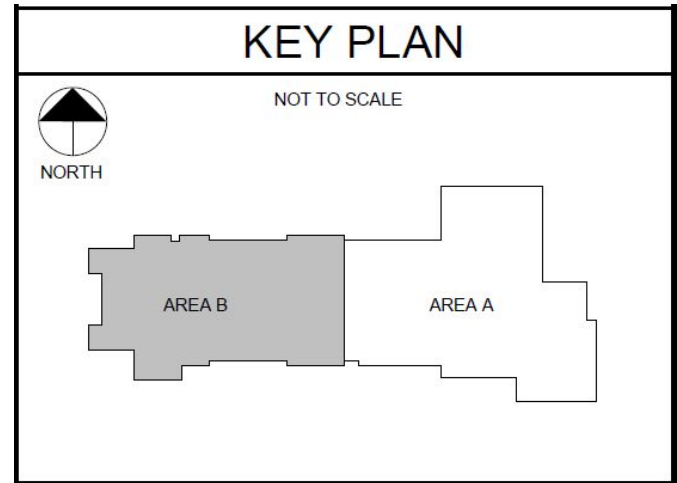


➤ Completed/Work in Progress:

- Laying of CMU masonry continues in the Cafeteria and the Second Floor.
- MEP installation continues in the classroom, throughout the corridors, and the Administration Area.
- Installation of metal stud framing continues at the tops of the EX-type wall.
- Installation of metal stud framing in the Administration Area continues.
- Setting of the ICF forms continues at the second floor. Placement of concrete has begun at the ICF on the second floor.
- Grass continues to establish on the northeast side of the site.

➤ Upcoming Work/Look Ahead:

- Continue setting and filling the ICF forms.
- Continue placing concrete floor slabs.
- Continue laying of masonry in the kitchen area and the second floor.
- Continue the installation of MEP.
- Continue Sitework.
- Continue placing hollow core planks.
- Continue metal stud framing.



Helen Caise Wade Elementary



North Side of the Site and Building



Week Ending April 3, 2026

Helen Caise Wade Elementary



Laying of Masonry Continues in the Kitchen Area



Helen Caise Wade Elementary



Installation of MEP in the Administration Area Continues



Week Ending April 3, 2026

Helen Caise Wade Elementary



MEP Installation Continues Through Corridor C01



Week Ending April 3, 2026

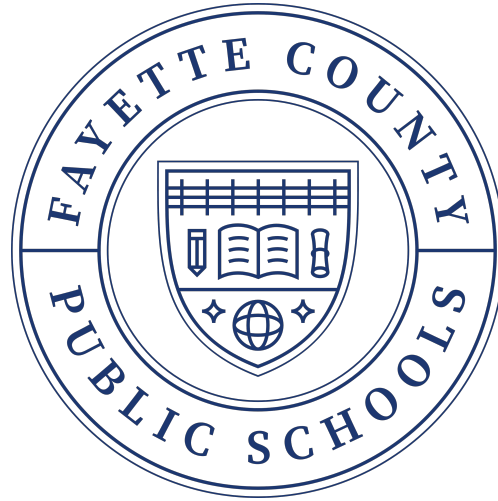
Helen Caise Wade Elementary



Installation of the ICF forms continues at the Second Floor



Week Ending April 3, 2026



Thank you!