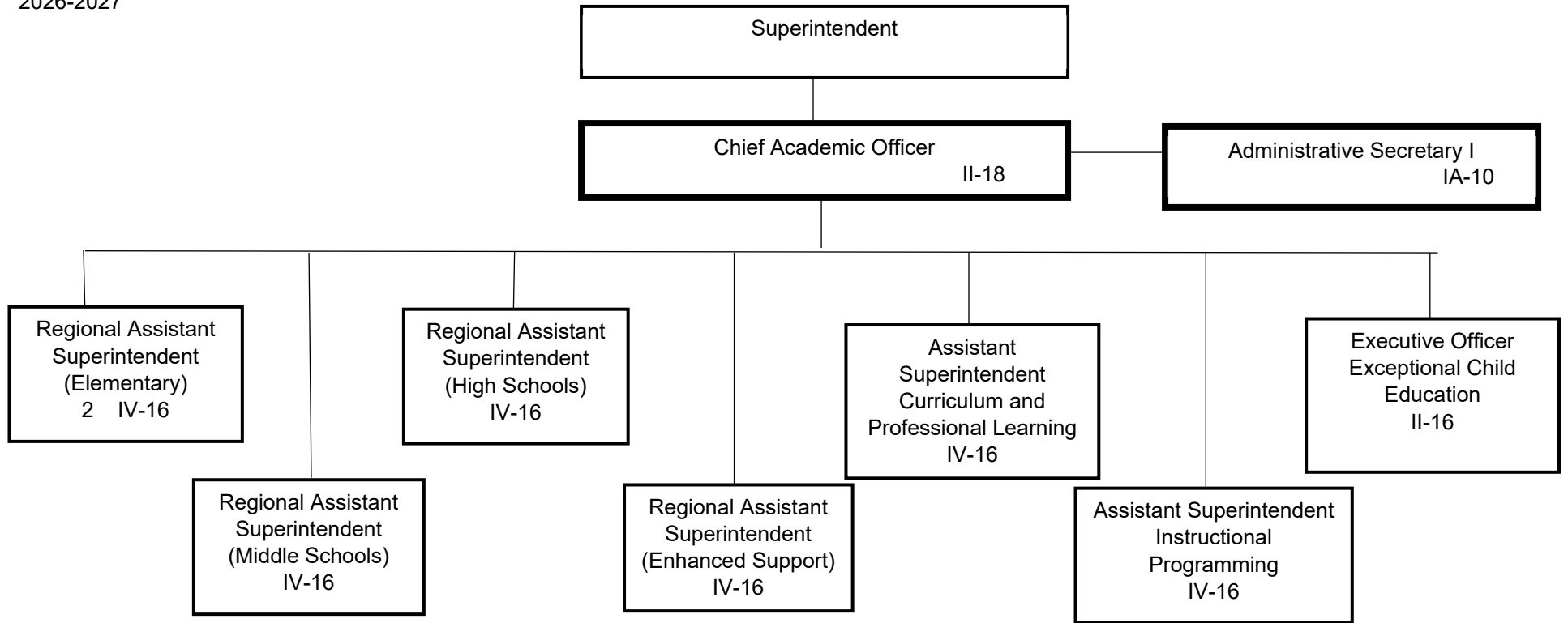


Summary:

General Fund Positions: 2
 Categorical Fund Positions: 0

1. Delete Assistant Superintendent Multilingual Learners IV-16
2. Delete Assistant Superintendent Academics (Middle) IV-16
3. Delete Assistant Superintendent Academics (High) IV-16
4. Delete Assistant Superintendent Academics (Elementary) IV-16
5. Delete Executive Administrator Academics IV-14
6. Add Regional Assistant Superintendent (Middle Schools) IV-16
7. Add Regional Assistant Superintendent (High Schools) IV-16
8. Add Regional Assistant Superintendent (Elementary) 2 IV-16
9. Add Regional Assistant Superintendent (Enhanced Support) IV-16
10. Add Assistant Superintendent Curriculum and Professional Learning IV-16
11. Add Assistant Superintendent Instructional Programming IV-16
12. Add Executive Officer Exceptional Child Education II-16 (moving from M-1, page 1)

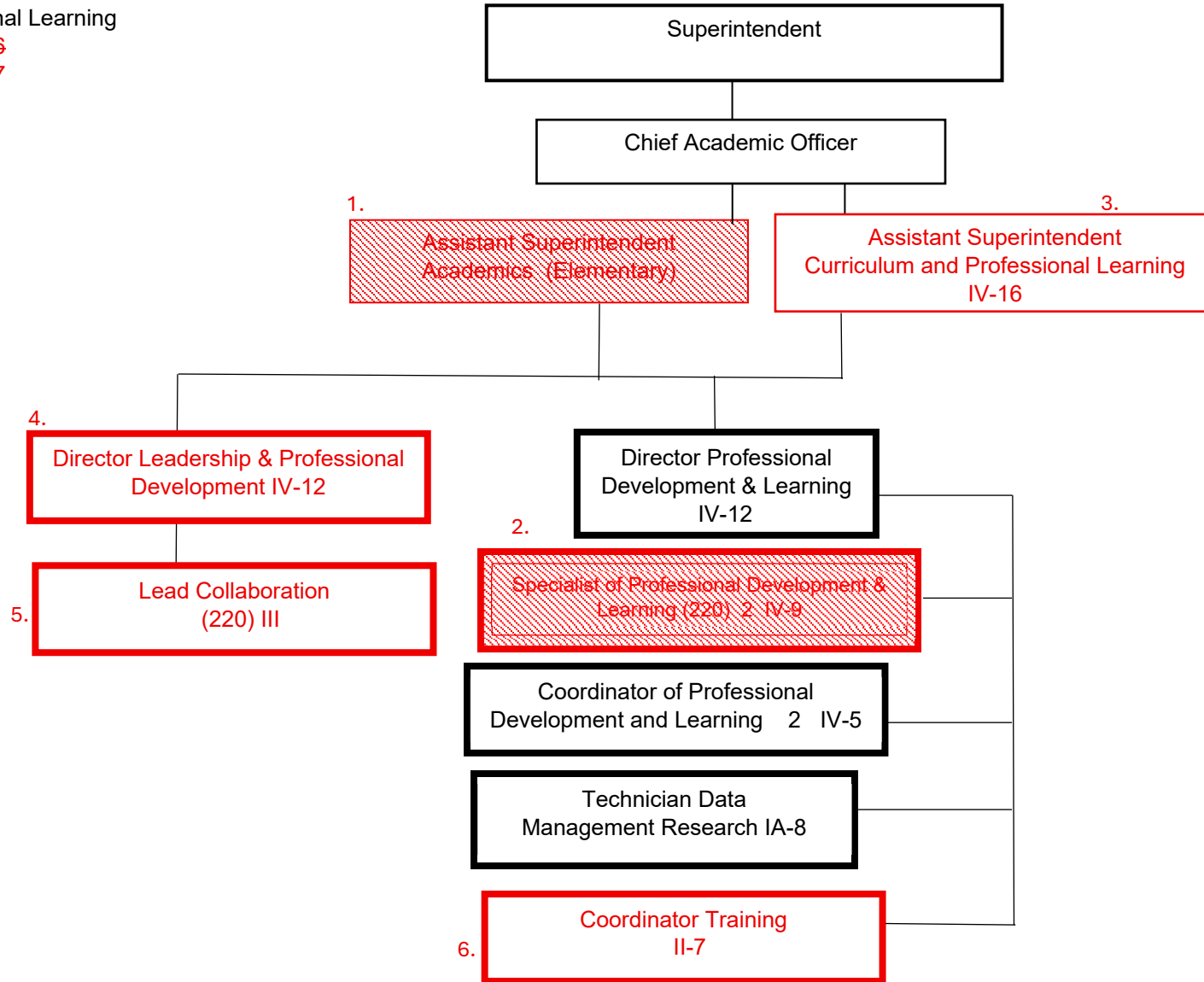


Summary:

General Fund Positions: 2
Categorical Fund Positions: 0

E-1

Submitted: 02/10/2026
Effective: 07/01/2026

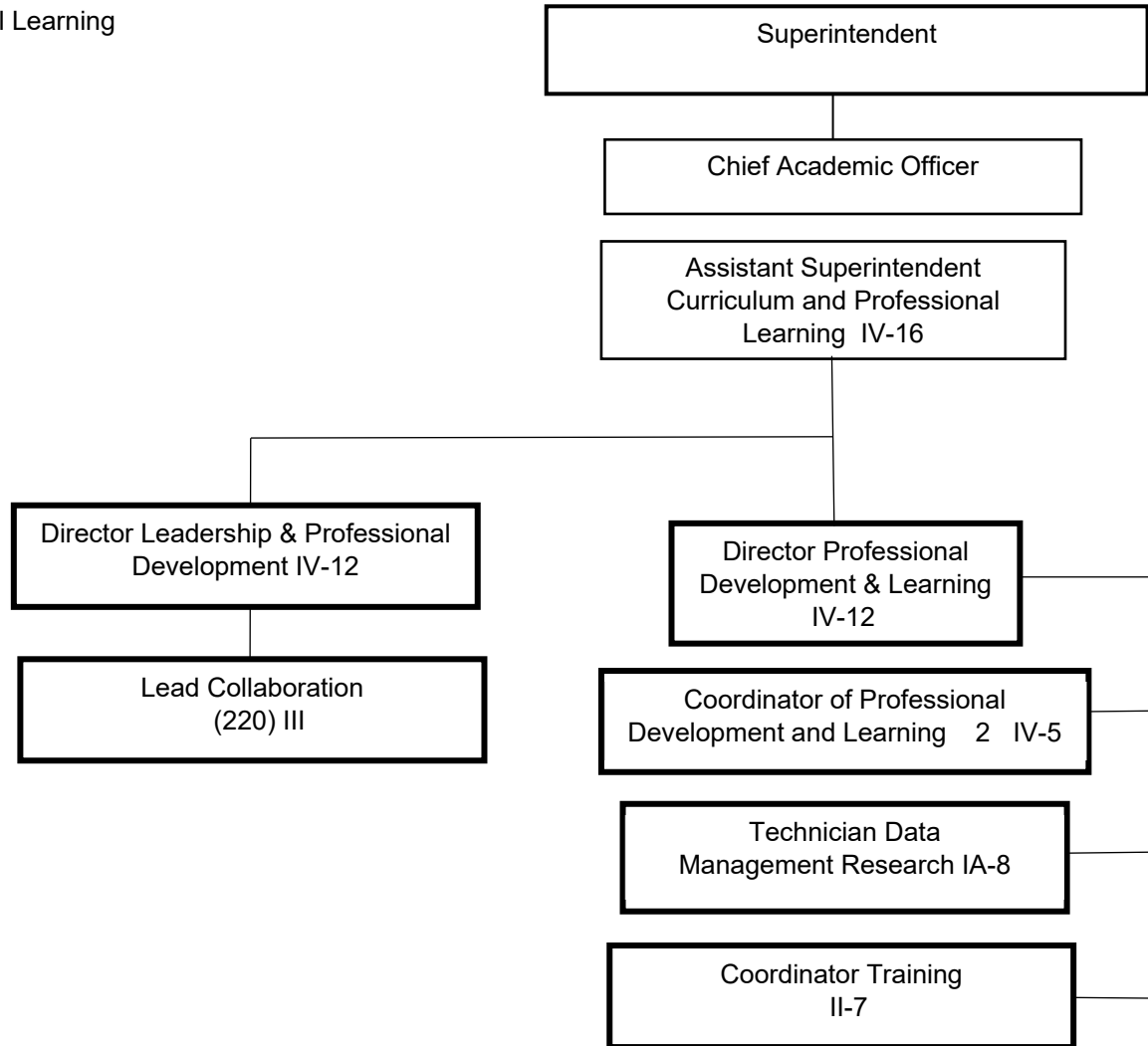


Summary:

General Fund Positions: ~~4~~ 7
Categorical Fund Positions: ~~2~~ 0

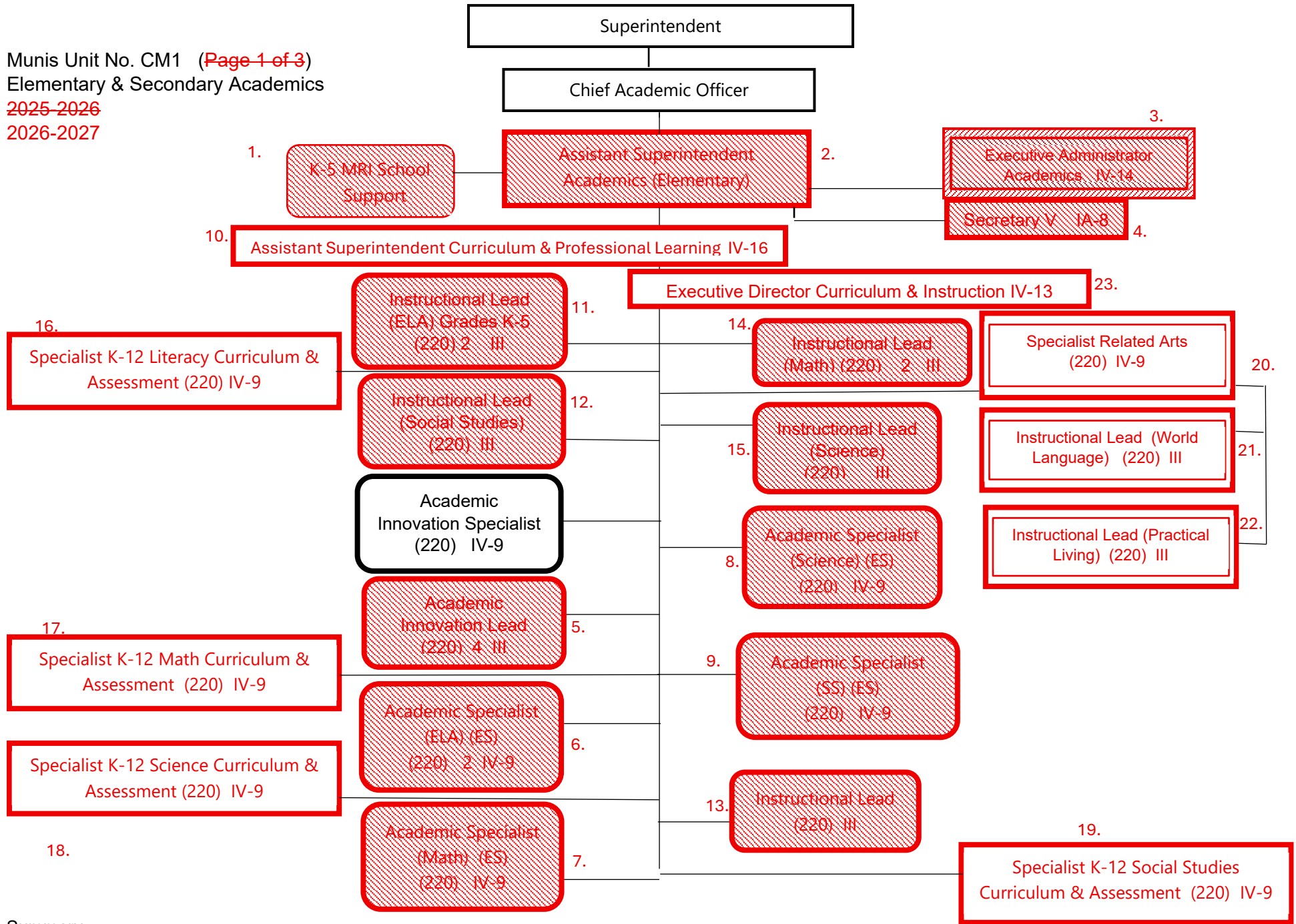
Submitted: ~~3/18/2025~~ 2/10/2026
Effective: 07/01/2026

1. Delete Assistant Superintendent Academics (Elementary)
2. Delete Specialist of Professional Development & Learning (220) 2 IV-9
3. Add Assistant Superintendent Curriculum and Professional Learning
4. Add Director Leadership & Professional Development IV-12 from AS1 (D-1)
5. Add Lead Collaboration (220) III from AS1 (D1)
6. Add Coordinator Training II-7 from LI1 (K-4)



Summary:

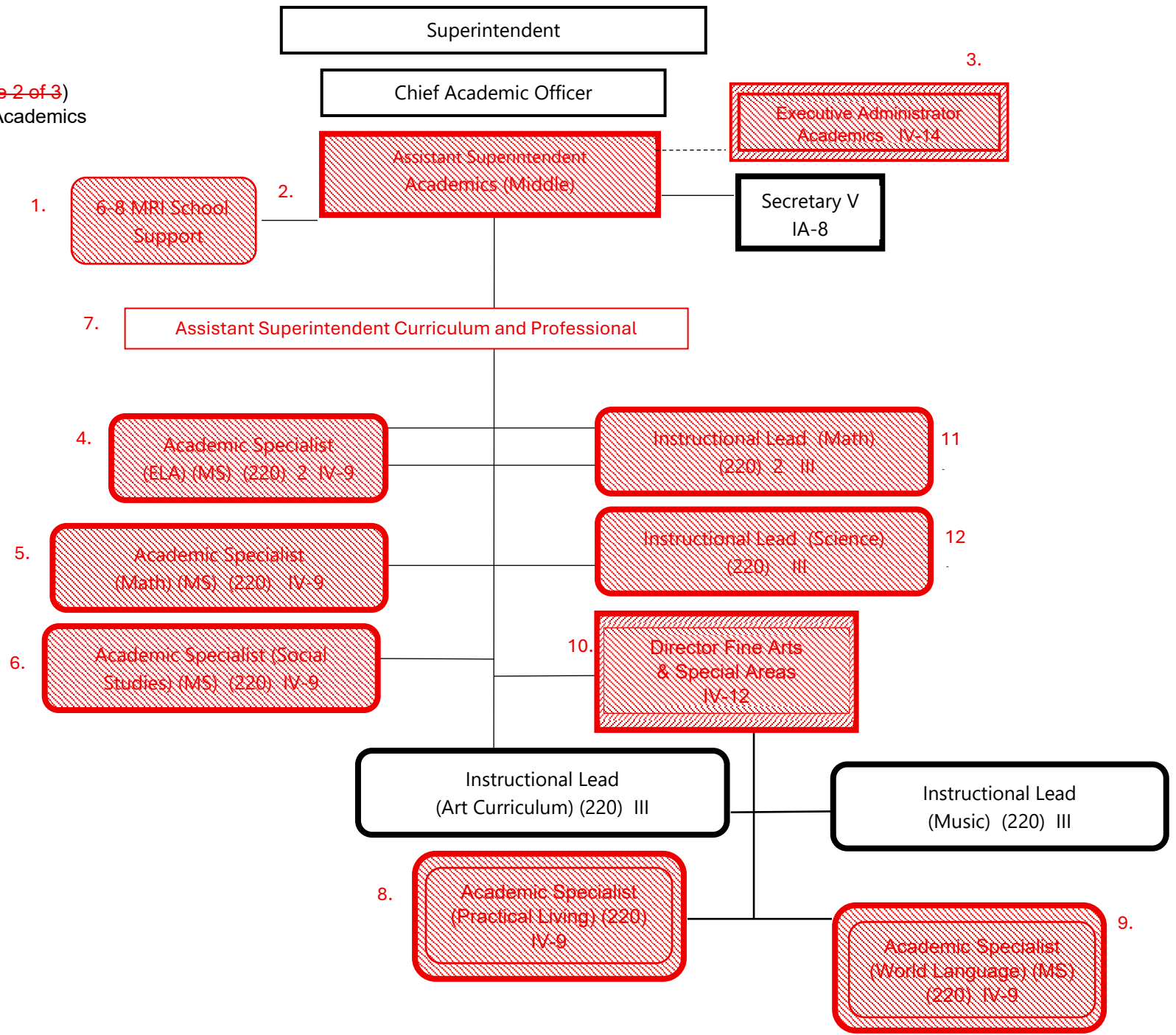
General Fund Positions: 7
Categorical Fund Positions: 0



Summary:

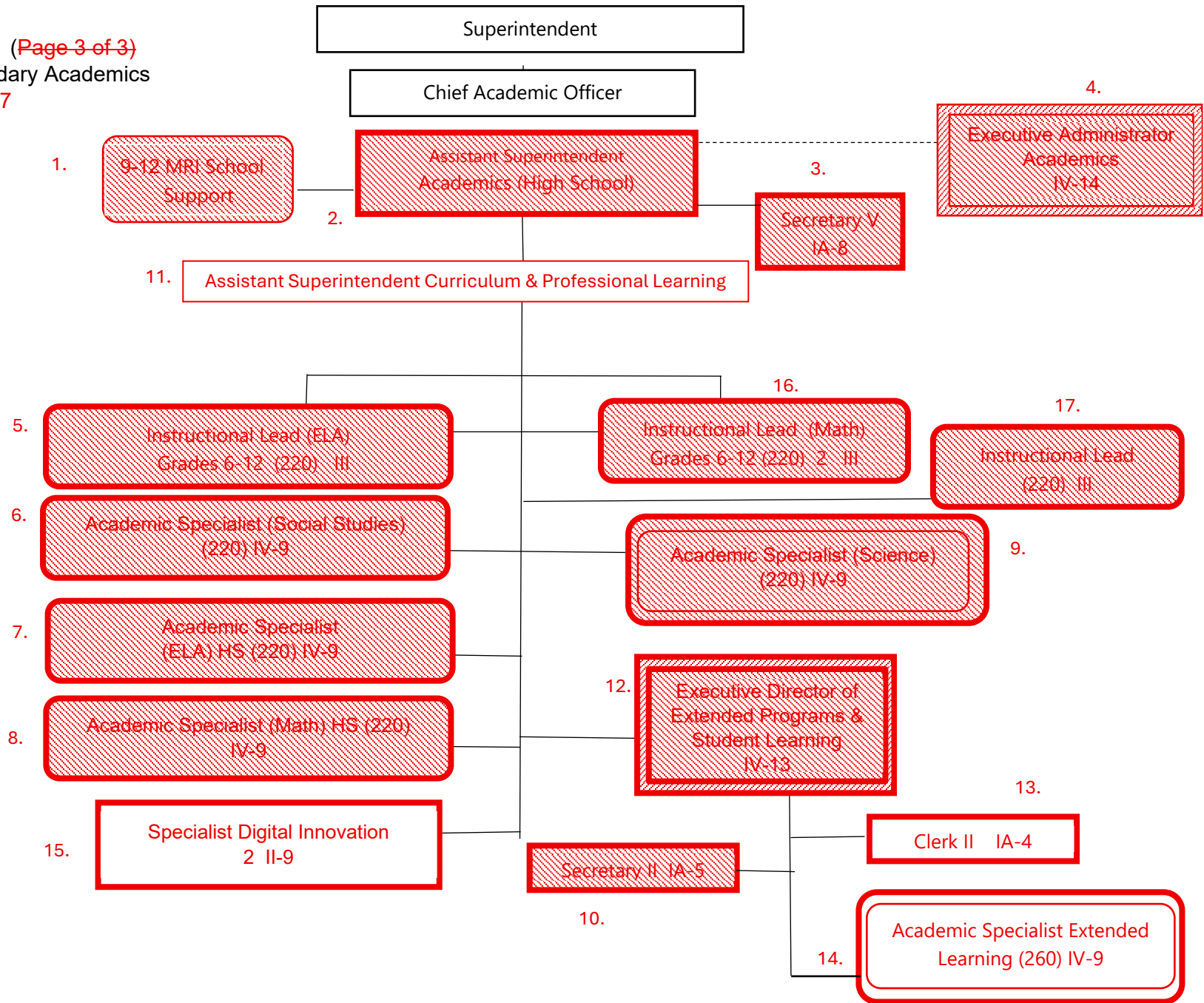
General Fund Positions: ~~20~~ 10
 Categorical Fund Positions: ~~0~~ 3

1. Delete K-5 MRI School Support
2. Delete Assistant Superintendent Academics (Elementary)
3. Delete Executive Administrator Academics IV-14
4. Delete Secretary V IA-8
5. Delete Academic Innovation Lead (220) 4 III
6. Delete Academic Specialist (ELA) (ES) (220) 2 IV-9
7. Delete Academic Specialist (Math) (ES) (220) IV-9
8. Delete Academic Specialist (Science) (ES) (220) IV-9
9. Delete Academic Specialist (SS) (ES) (220) IV-9
10. Add Assistant Superintendent Curriculum & Professional Learning
11. Delete Instructional Lead (ELA) Grades K-5 (220) 2 III
12. Delete Instructional Lead (Social Studies) (220) III
13. Delete Instructional Lead (220) III
14. Delete Instructional Lead (Math) (220) 2 III
15. Delete Instructional Lead (Science) (220) III
16. Add Specialist K-12 Literacy Curriculum & Assessment
17. Add Specialist K-12 Math Curriculum & Assessment
18. Add Specialist K-12 Science Curriculum & Assessment
19. Add Specialist K-12 Social Studies Curriculum & Assessment
20. Add Specialist Related Arts
21. Add Instructional Lead (World Language) (220) III
22. Add Instructional Lead (Practical Living) (220) III
23. Add Executive Director Curriculum & Instruction IV-13



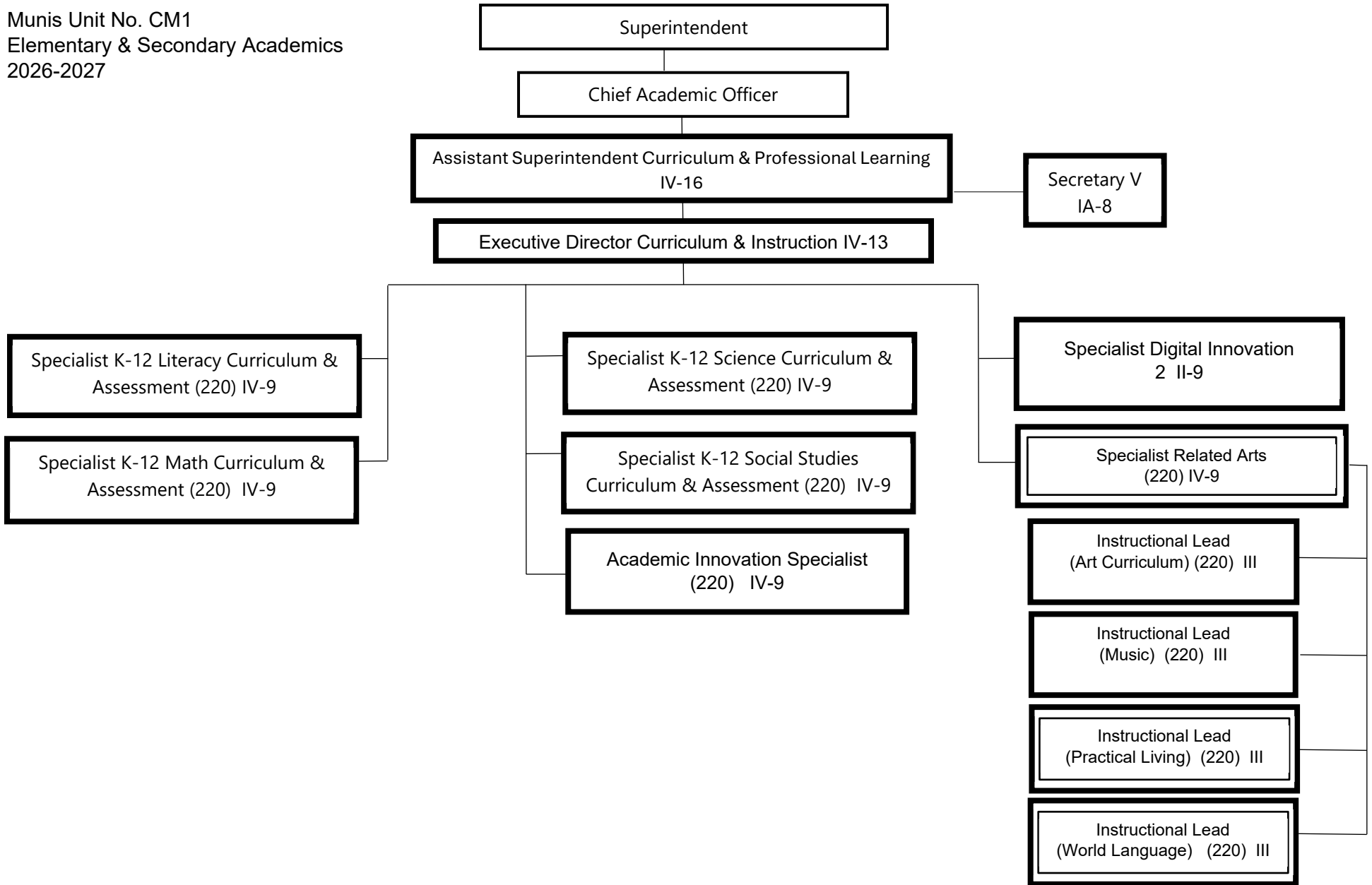
Summary:
 General Fund Positions: 42
 Categorical Fund Positions: 3-

1. Delete 6-8 MRI School Support
2. Delete Assistant Superintendent Academics (Middle)
3. Delete Executive Administrator Academics IV-14
4. Delete Academic Specialist (ELA) (MS) (220) 2 IV-9
5. Delete Academic Specialist (Math) (MS) (220) IV-9
6. Delete Academic Specialist (Social Studies) (MS) (220) IV-9
7. Add Assistant Superintendent Curriculum and Professional Learning
8. Delete Academic Specialist (Practical Living) (220) IV-9
9. Delete Academic Specialist (World Language) (MS) (220) IV-9
10. Delete Director Fine Arts & Special Areas IV-12
11. Delete Instructional Lead (Math) 2
12. Delete Instructional Lead (Science)
13. Combine page 2 of 3 with page 1 of 3

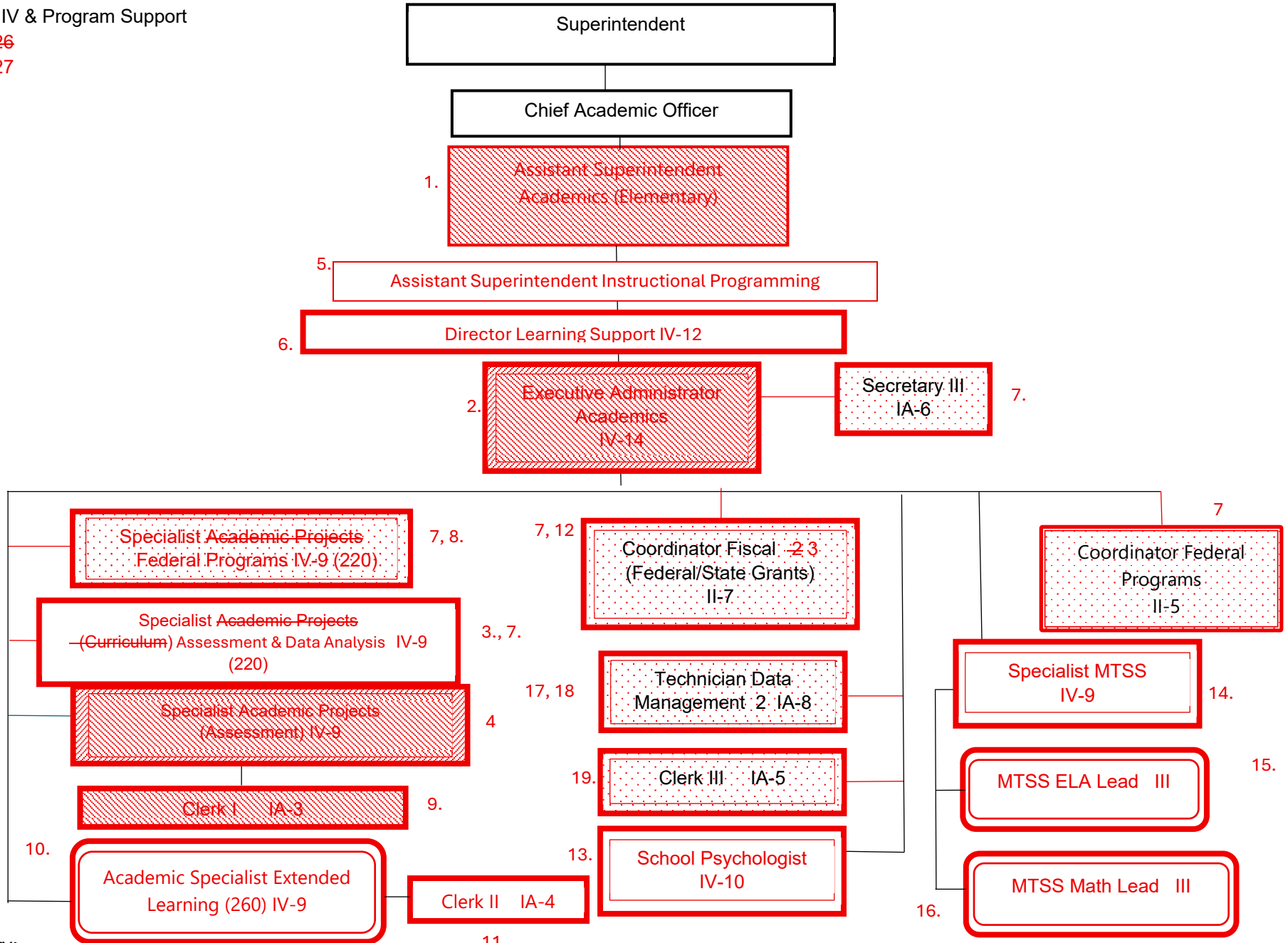


Summary:
 General Fund Positions: 42
 Categorical Fund Positions: 2

1. Delete 9-12 MRI School Support
2. Delete Assistant Superintendent Academics (High School)
3. Delete Secretary V
4. Delete Executive Administrator Academics IV-14
5. Delete Instructional Lead (ELA) Grades 6-12 (220) III
6. Delete Academic Specialist (Social Studies) (220) IV-9 (
7. Delete Academic Specialist (ELA) HS (220) IV-9
8. Delete Academic Specialist (Math) HS (220) IV-9
9. Delete Academic Specialist (Science) (220) IV-9
10. Delete Secretary II IA-5
11. Add Assistant Superintendent Curriculum and Professional Learning
12. Delete Executive Director of Extended Programs & Student Learning
13. Move Clerk II IA-4 to TI1
14. Move Academic Specialist Extended Learning to TI1
15. Add Specialist Digital Innovation 2 II-9 from LI1 (K-4)
16. Delete Instructional Lead (Math) Grades 6-12 (220) 2 III
17. Delete Instructional Lead
18. Combine page 3 of 3 with page 1 of 3



Summary:
 General Fund Positions: 10
 Categorical Fund Positions: 3



Summary:

General Fund Positions: 3

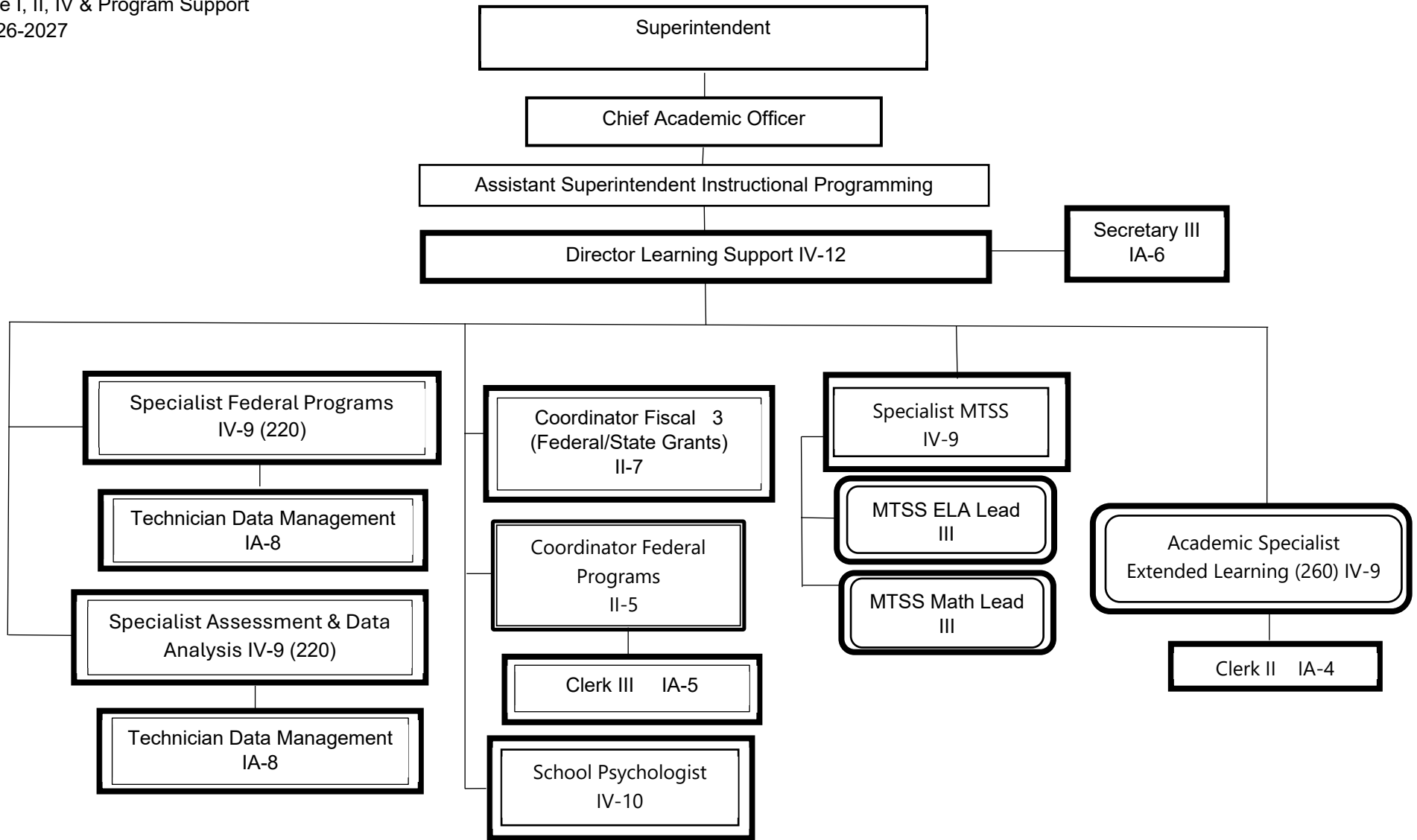
Categorical Fund Positions: 9 14

E-4

Submitted: 10/14/2025 02/10/2026

Effective: 10/15/2025-07/01/2026

1. Delete Assistant Superintendent Academics (Elementary)
2. Delete Executive Administrator Academics IV-14
3. Reclassify from Specialist Academic Projects (Curriculum) IV-9 general funded to Specialist Assessment & Data Analysis IV-9 categorical funded, reduce from 260 to 220 days
4. Delete Specialist Academic Projects (Assessment) IV-9
5. Add Assistant Superintendent Instructional Programming
6. Add Director Learning Support IV-12
7. Change reporting relationship to Director Learning Support
8. Change job title Specialist Academic Projects (Federal Programs) to Specialist Federal Programs, reduce from 260 to 220 days.
9. Delete Clerk I
10. Add Academic Specialist Extended Learning (260) IV-9 from CM1 E3 (pg 3 of 3)
11. Add Clerk II IA-4 from CM1 E3 (pg 3 of 3)
12. Add Coordinator Fiscal (Federal/State Grants) from AS1
13. Add School Psychologist
14. Add Specialist MTSS
15. Add MTSS ELA Lead
16. Add MTSS Math Lead
17. Change reporting relationship of 1 Technician Data Management to Specialist Federal Programs
18. Change reporting relationship of 1 Technician Data Management to Specialist Assessment & Data Analysis
19. Change reporting relationship to Coordinator Federal Programs.



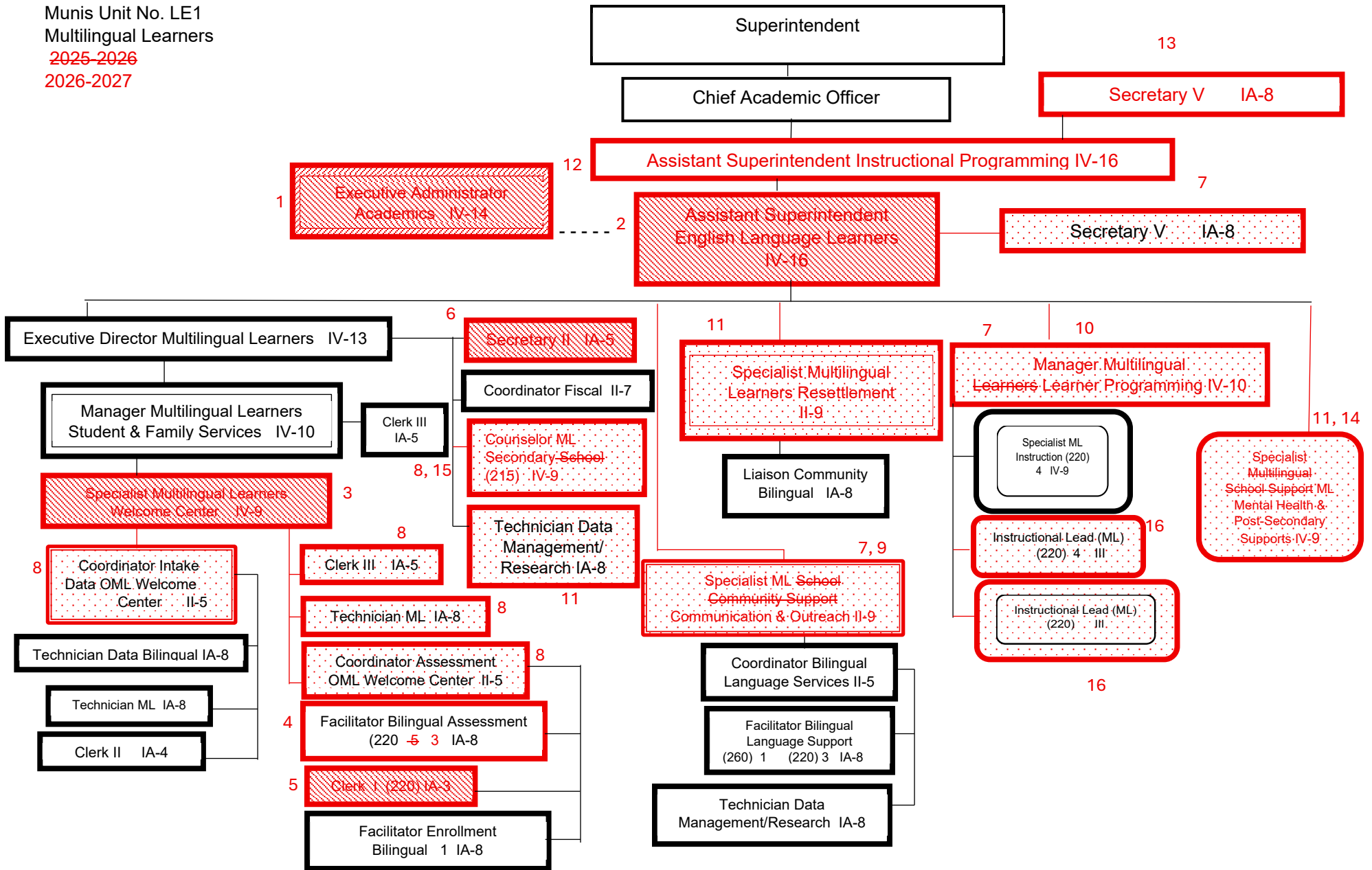
Summary:

General Fund Positions: 3

Categorical Fund Positions: 14

Submitted: 02/10/2026

Effective: 07/01/2026



Summary:

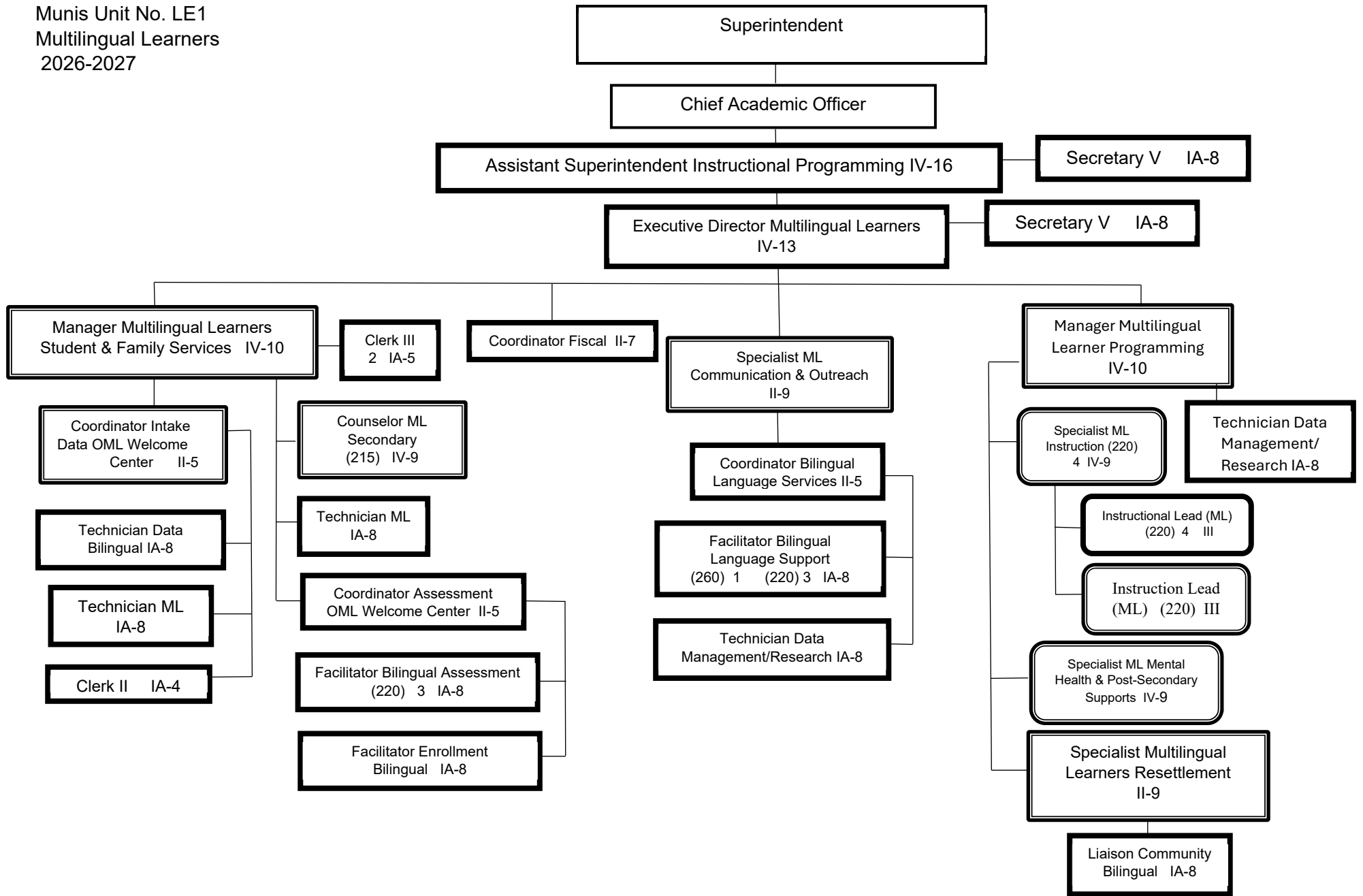
General Fund Positions: ~~36~~ 28

Categorical Fund Positions: 8 12

Submitted: ~~05/13/2025~~ 02/10/2026

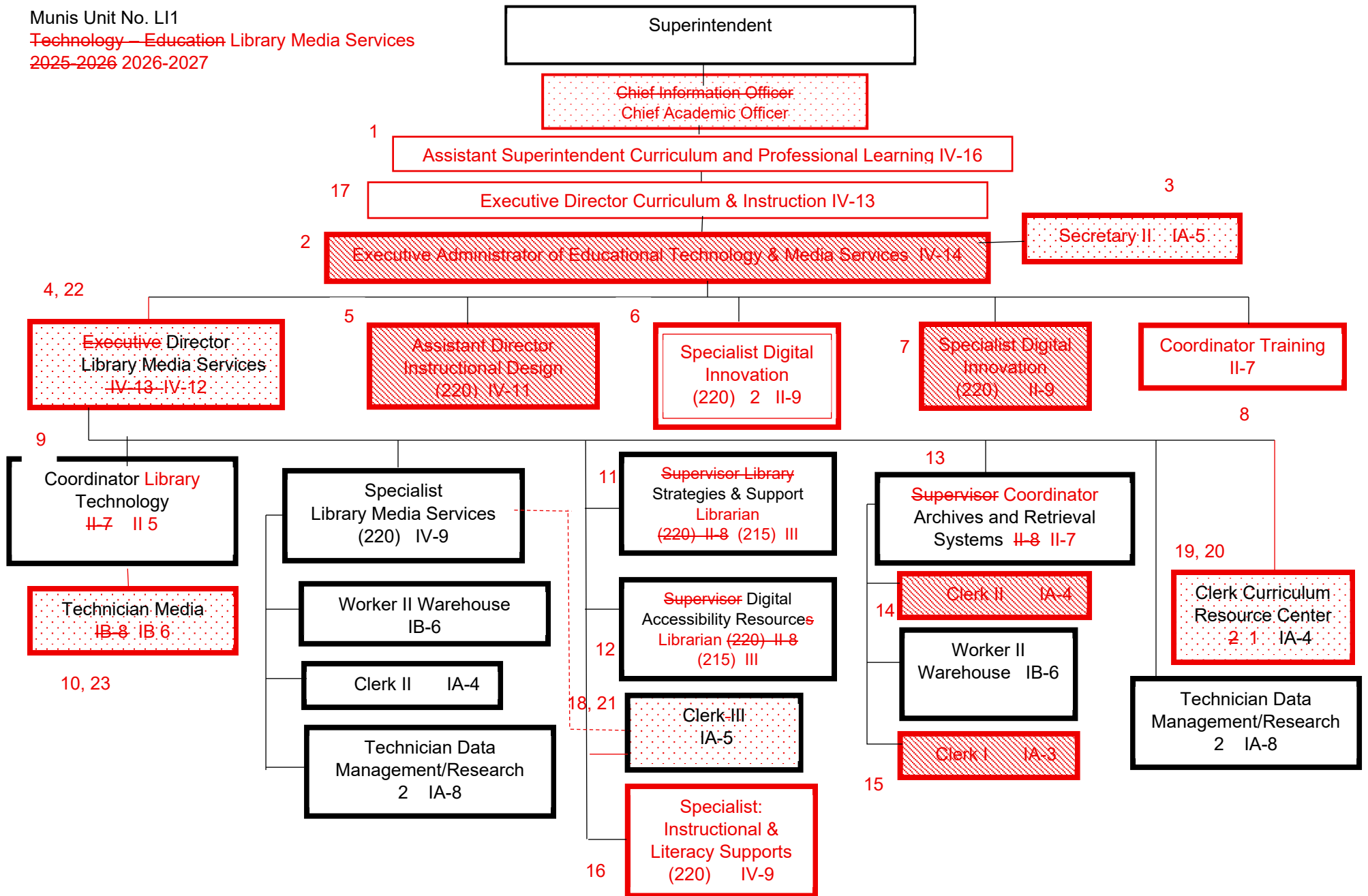
Effective: ~~05/14/2025~~ 07/01/2026

1. Delete Executive Administrator Academics IV-14
2. Delete Assistant Superintendent English Language Learners IV-16
3. Delete Specialist Multilingual Learners Welcome Center IV-9
4. Delete 2 Facilitator Bilingual Assessment (220) IA-8
5. Delete Clerk I (220) IA-3
6. Delete Secretary II IA-5
7. Change reporting relationship to Executive Director Multilingual Learners
8. Change reporting relationship to Manager Multilingual Learners Student & Family Services
9. Reclassify Specialist ML School Community Support II-9 general funded to Specialist ML Communication & Outreach II-9 categorical funded
10. Reclassify Manager Multilingual Learners IV-10 general funded to Manager Multilingual Learner Programming IV-10 categorical funded
11. Change reporting relationship to Manager Multilingual Learner Programming
12. Add Assistant Superintendent Instructional Programming
13. Add Secretary V IA-8
14. Reclassify Specialist Multilingual School Support IV-9 general funded to Specialist ML Mental Health & Post Secondary Supports IV-9 categorical funded
15. Reclassify Counselor Secondary School (215) IV-9 general funded to Counselor ML Secondary (215) IV-9 categorical funded
16. Change reporting relationship to Specialist ML Instruction



Summary:
 General Fund Positions: 28
 Categorical Fund Positions: 12

Submitted: 02/10/2026
 Effective: 07/01/2026



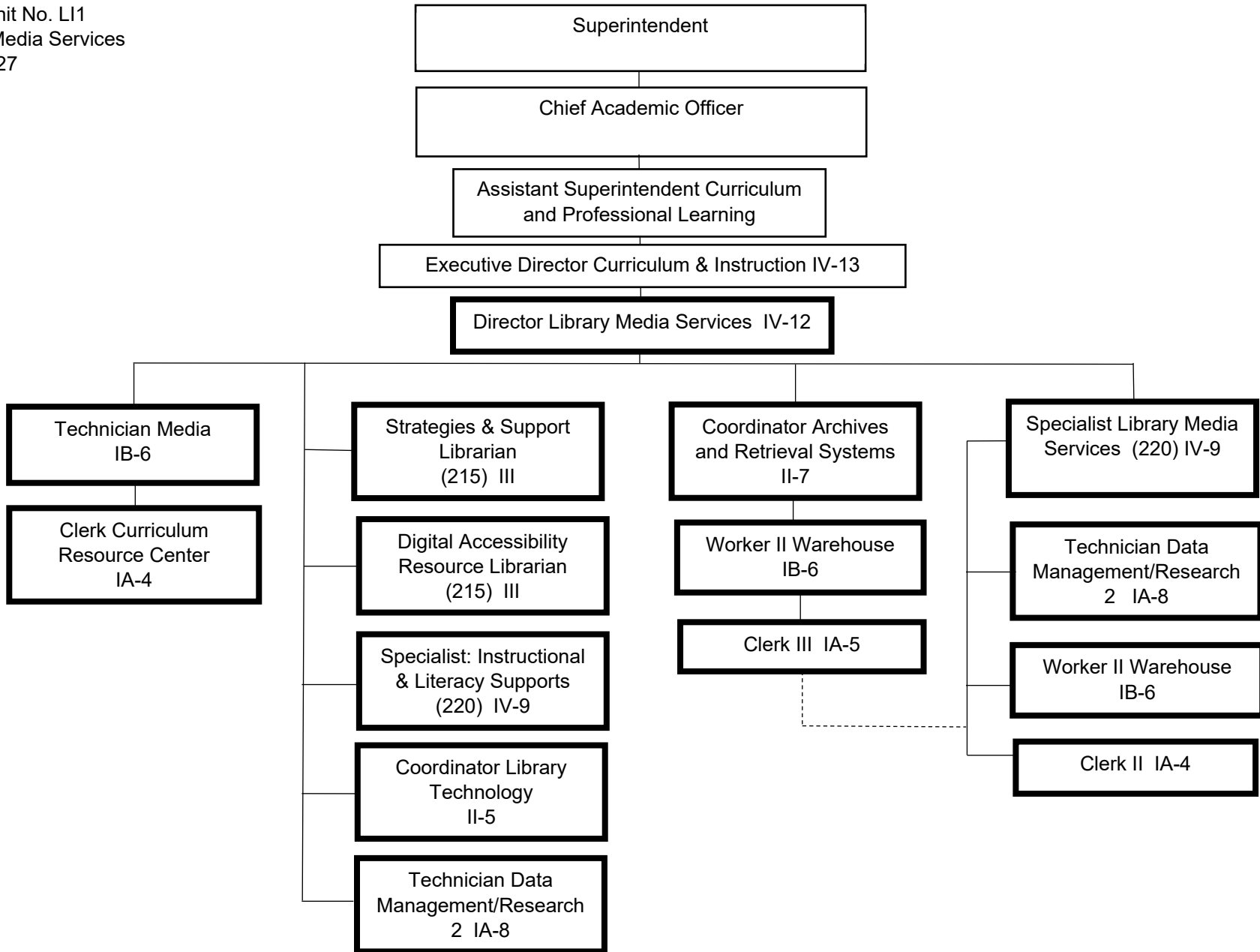
Summary:

General Fund Positions: ~~24~~ 17
 Categorical Fund Positions: ~~2~~ 0

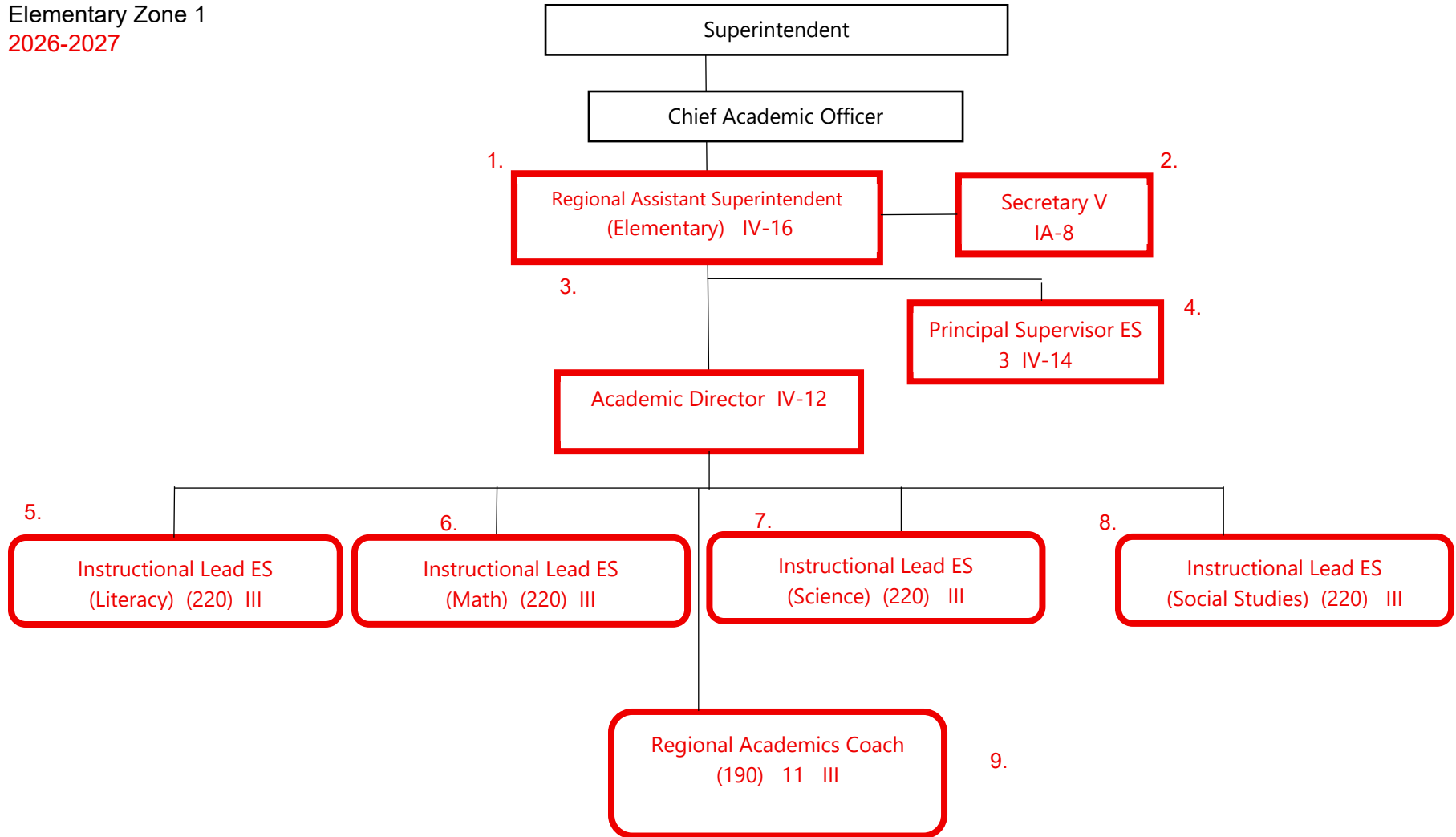
K-4 E-6

Submitted: ~~12/17/2024~~ 02/10/2026
 Effective: ~~1/18/2025~~ 07/01/2026

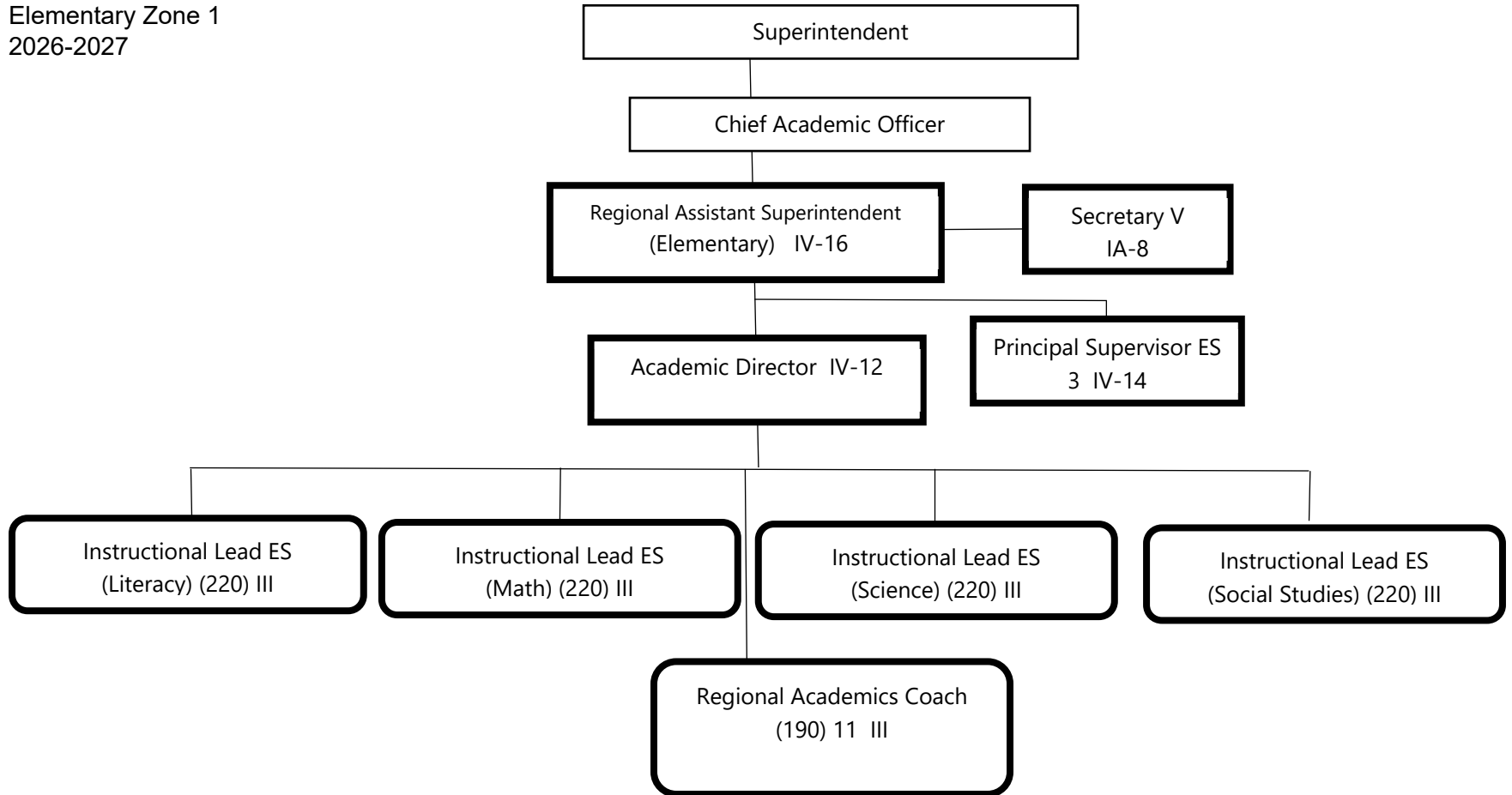
1. Add Assistant Superintendent Curriculum and Professional Learning
2. Delete Executive Administrator of Educational Technology & Media Services IV-14
3. Move Secretary II IA-5 to Technology CE1, page K-3 (will be G-14).
4. Reclassify from Executive Director Library Media Services IV-13 to Director Library Media Services IV-12
5. Delete Assistant Director Instructional Design (220) IV-11
6. Move Specialist Digital Innovation (220) 2 II-9 to CM1, remove categorical funding.
7. Delete Specialist Digital Innovation (220) II-9
8. Move Coordinator Training II-7 to CA1
9. Reclassify from Coordinator Technology Projects II 7 to Coordinator Library Technology II 5
10. Reclassify from Technician Media IB 8 to Technician Media IB 6
11. Reclassify from Supervisor Library Strategies and Support (220) II-8 to Strategies & Support Librarian (215) III
12. Reclassify from Supervisor Digital Accessibility Resources (220) II-8 to Digital Accessibility Resource Librarian (215) III
13. Reclassify from Supervisor Archives and Retrieval Systems II-8 to Coordinator Archives and Retrieval Systems II-7
14. Delete Clerk II IA-4
15. Delete Clerk I IA-3
16. Add Specialist: Instructional & Literacy Supports (220) IV-9
17. Add Executive Director Curriculum & Instruction IV-13
18. Reflect indirect reporting relationship to Specialist Library Media Services
19. Change reporting relationship to Technician Media IB-6
20. Delete 1 Clerk Curriculum Resource Center IA-4
21. Change reporting relationship to Director Library Media Services IV-12
22. Change reporting relationship to Executive Director Curriculum & Instruction IV-13
23. Reflect reporting relationship change.

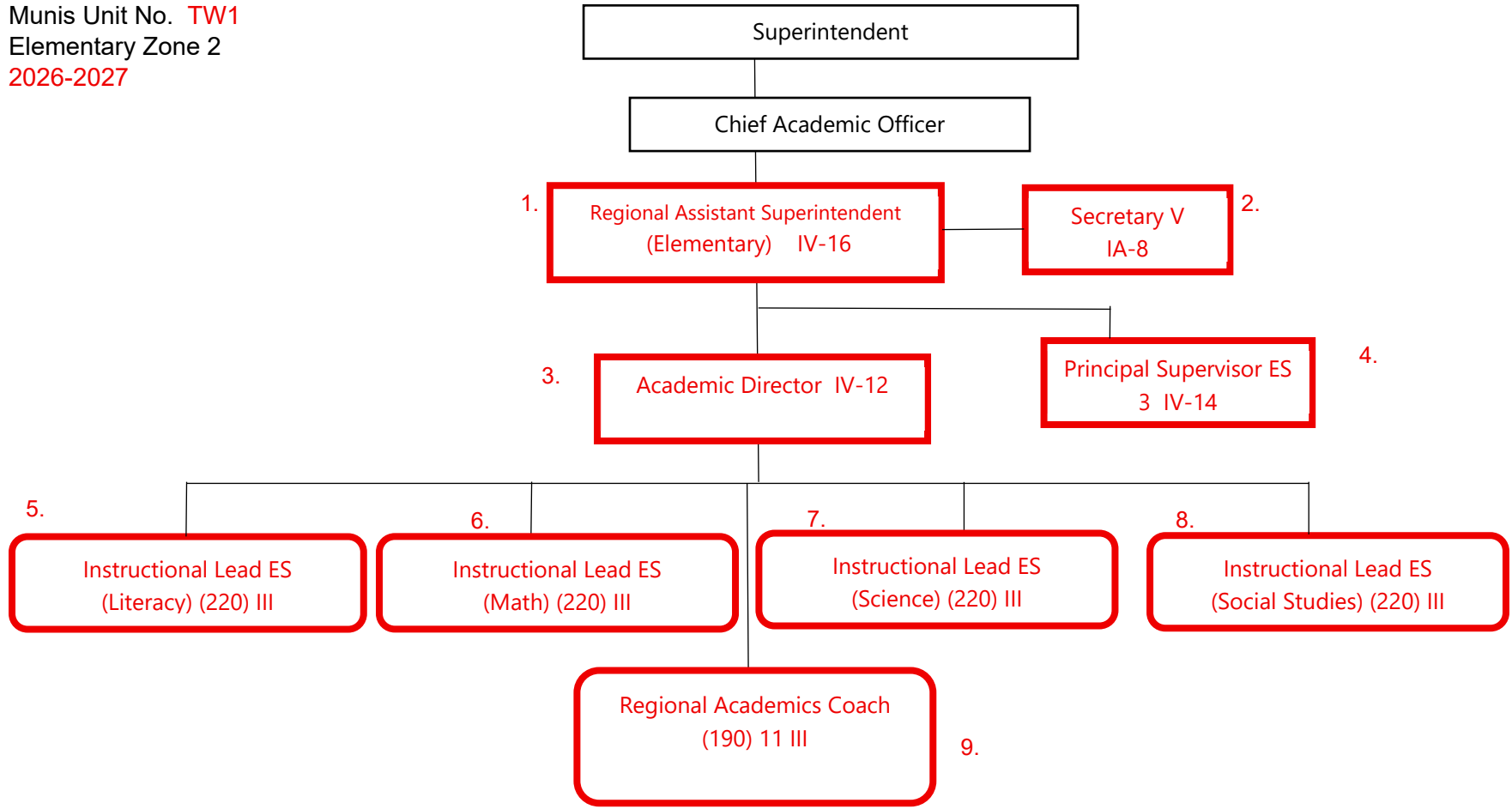


Summary:
 General Fund Positions: 17
 Categorical Fund Positions: 0

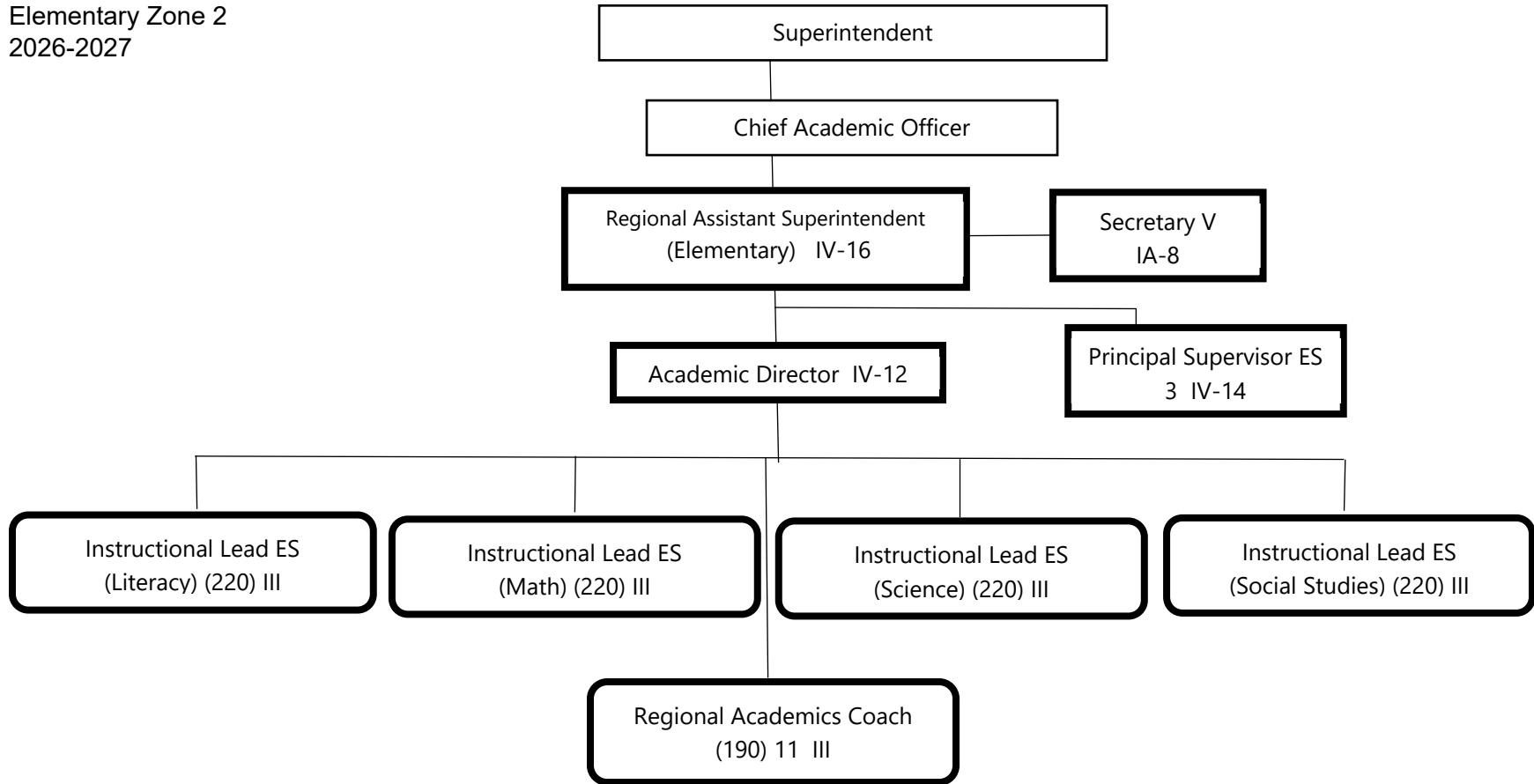


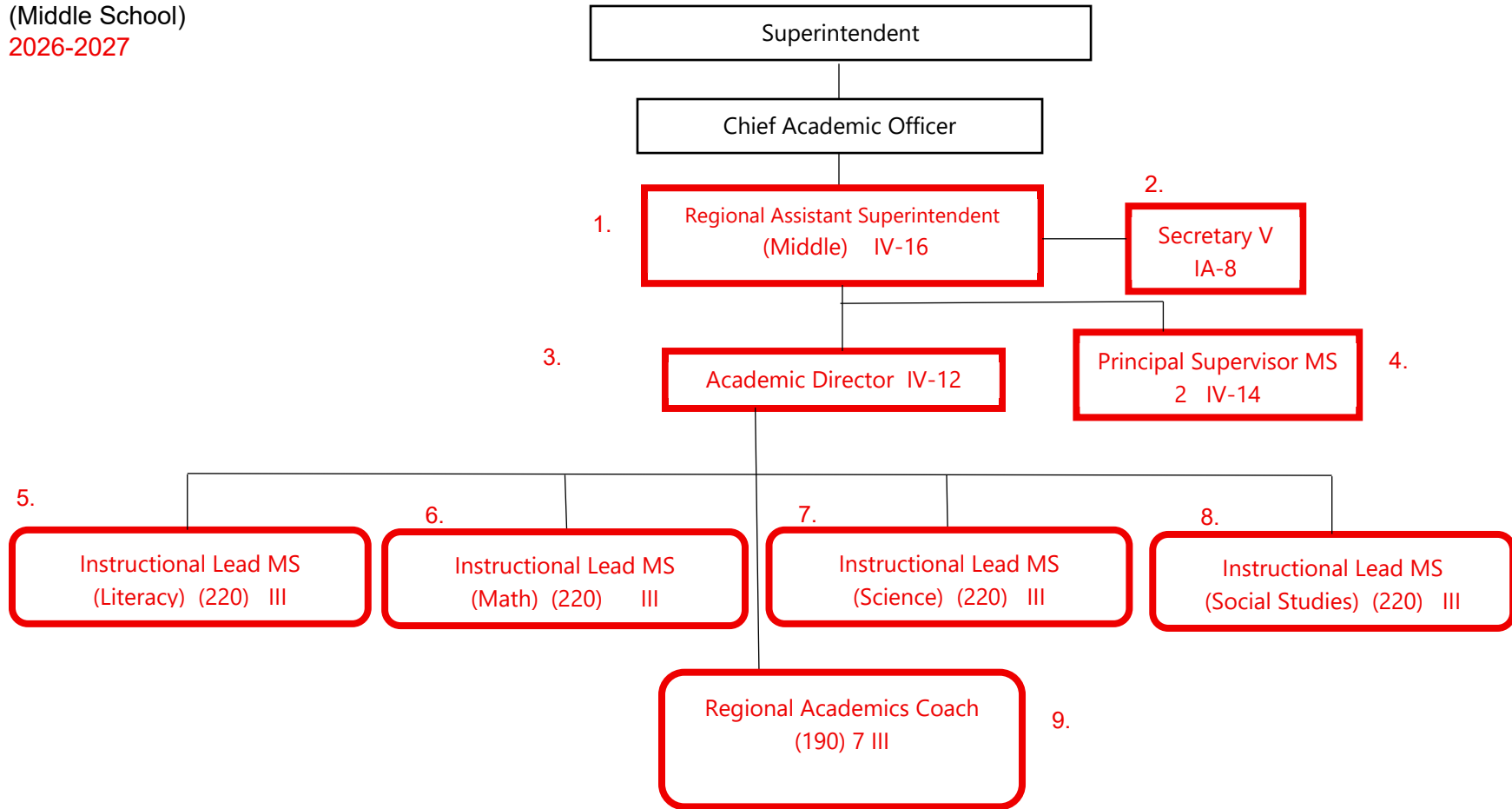
1. Add Regional Assistant Superintendent (Elementary) IV-16
2. Add Secretary V
3. Add Academic Director IV-12
4. Add Principal Supervisor ES 3 IV-14
5. Add Instructional Lead ES (Literacy) (220) III
6. Add Instructional Lead ES (Math) (220) III
7. Add Instructional Lead ES (Science) (220) III
8. Add Instructional Lead ES (Social Studies) (220) III
9. Add Regional Academics Coach (190) 11 III



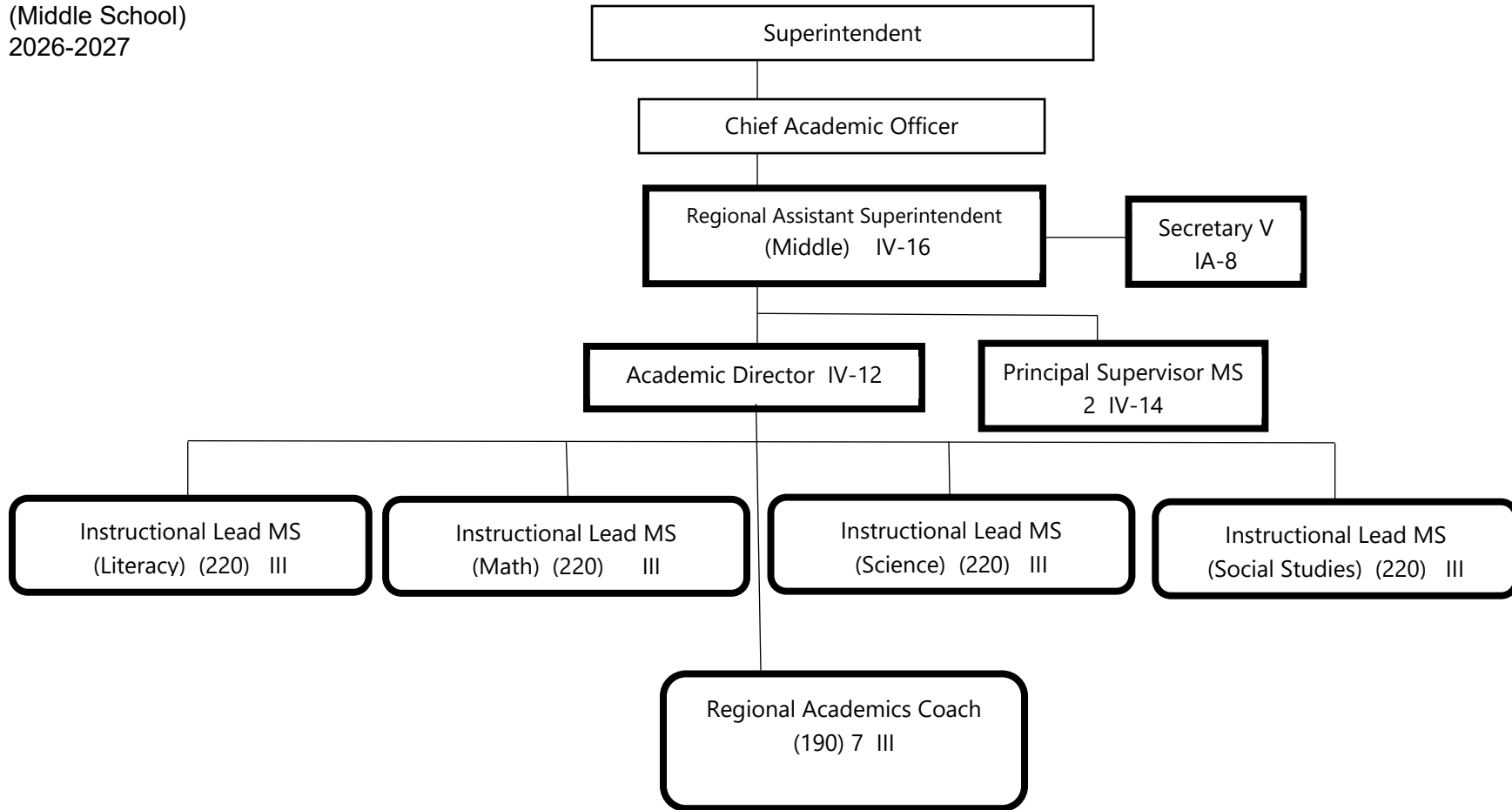


1. Add Regional Assistant Superintendent (Elementary) IV-16
2. Add Secretary V IA-8
3. Add Academic Director IV-12
4. Add Principal Supervisor ES 3 IV-14
5. Add Instructional Lead ES (Literacy) (220) III
6. Add Instructional Lead ES (Math) (220) III
7. Add Instructional Lead ES (Science) (220) III
8. Add Instructional Lead ES (Social Studies) (220) III
9. Add Regional Academics Coach (190) 11 III

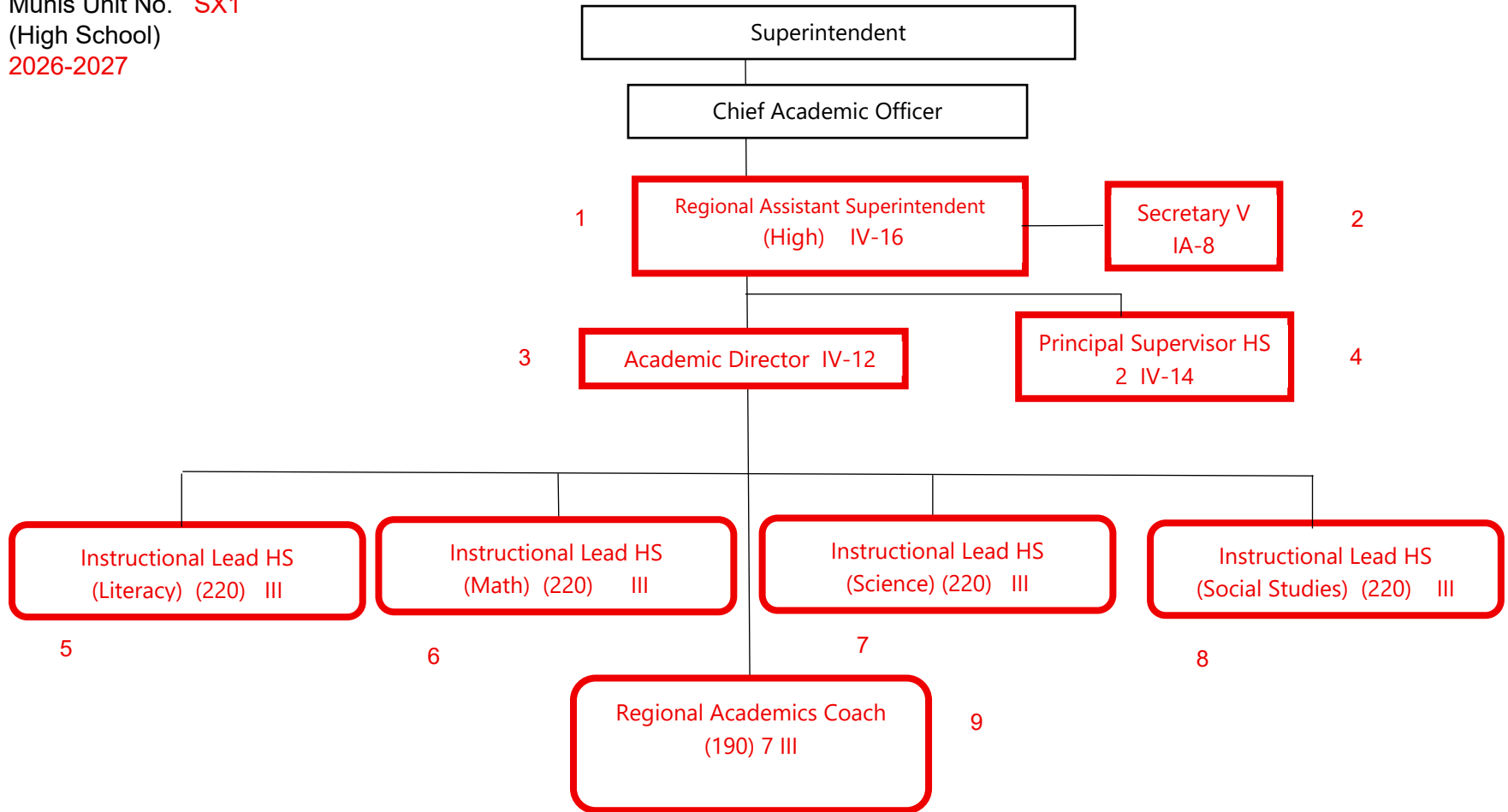




1. Add Regional Assistant Superintendent (Middle) IV-16
2. Add Secretary V IA-8 from D5
3. Add Academic Director IV-12
4. Add Principal Supervisor MS 2 IV-14
5. Add Instructional Lead MS (Literacy) (220) III
6. Add Instructional Lead MS (Math) (220) III
7. Add Instructional Lead MS (Science) (220) III
8. Add Instructional Lead MS (Social Studies) (220) III
9. Add Regional Academics Coach (190) 7 III

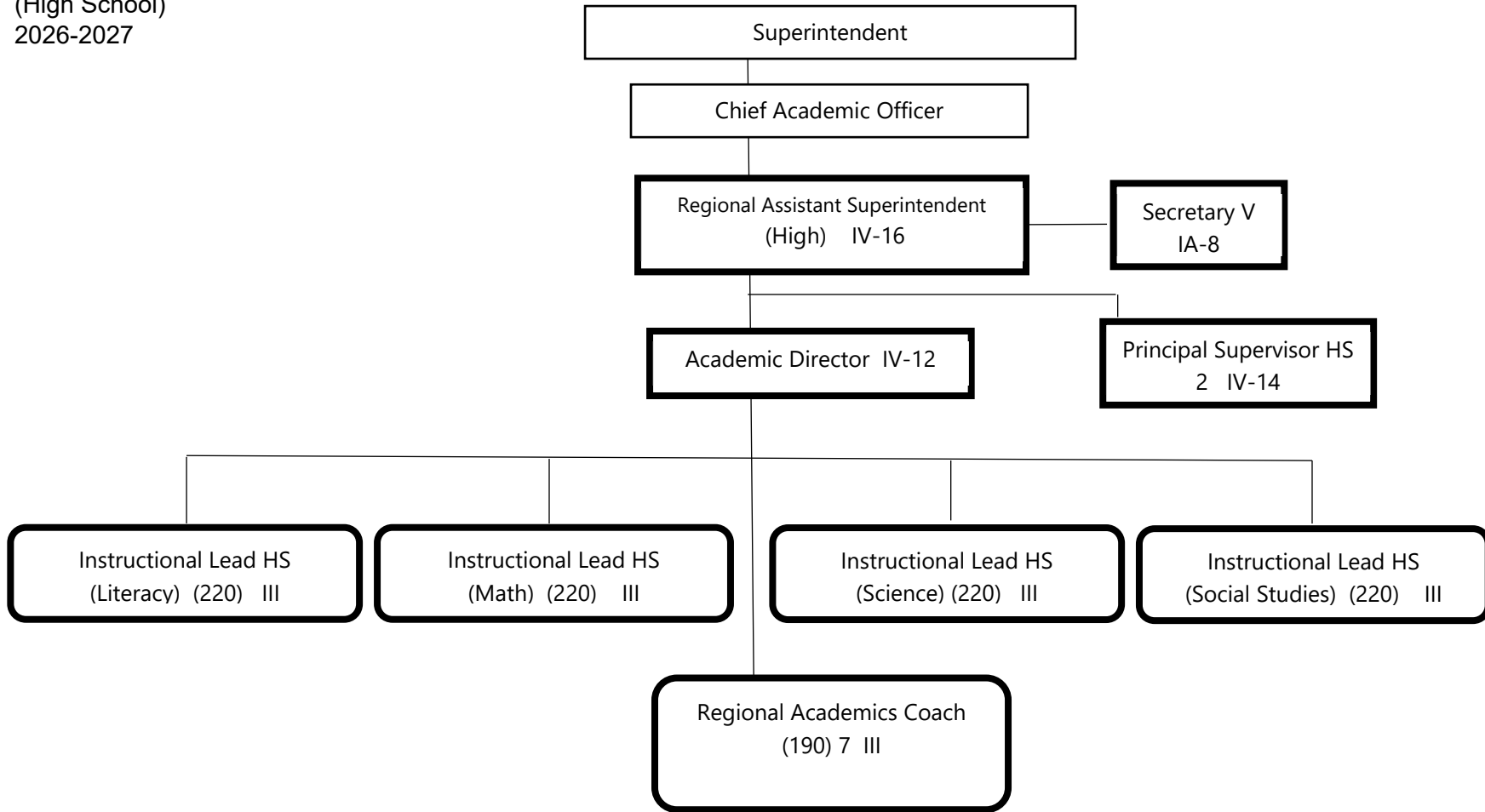


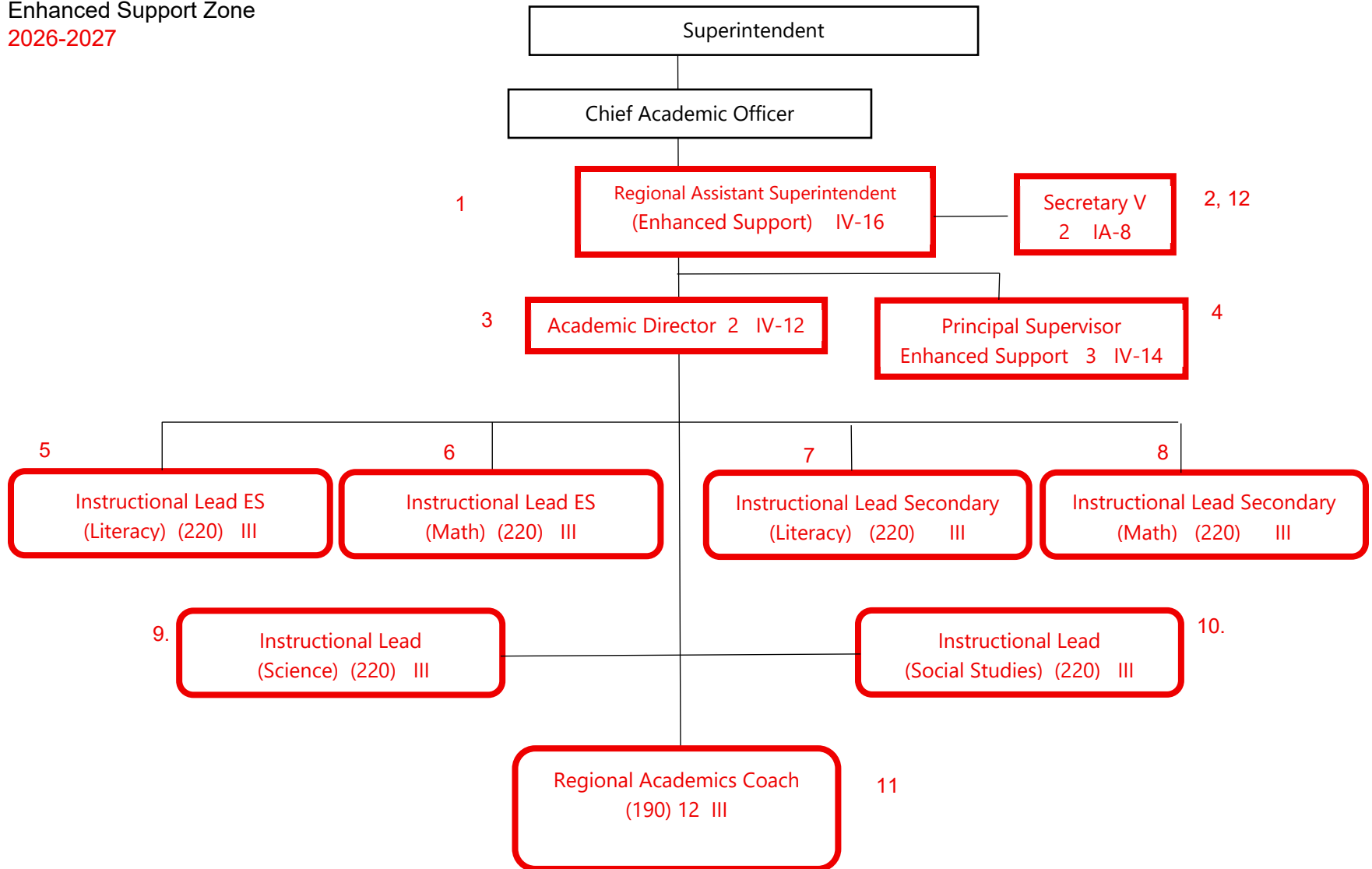
Munis Unit No. **SX1**
(High School)
2026-2027



Summary:
General Fund Positions: **16**
Categorical Fund Positions: **0**

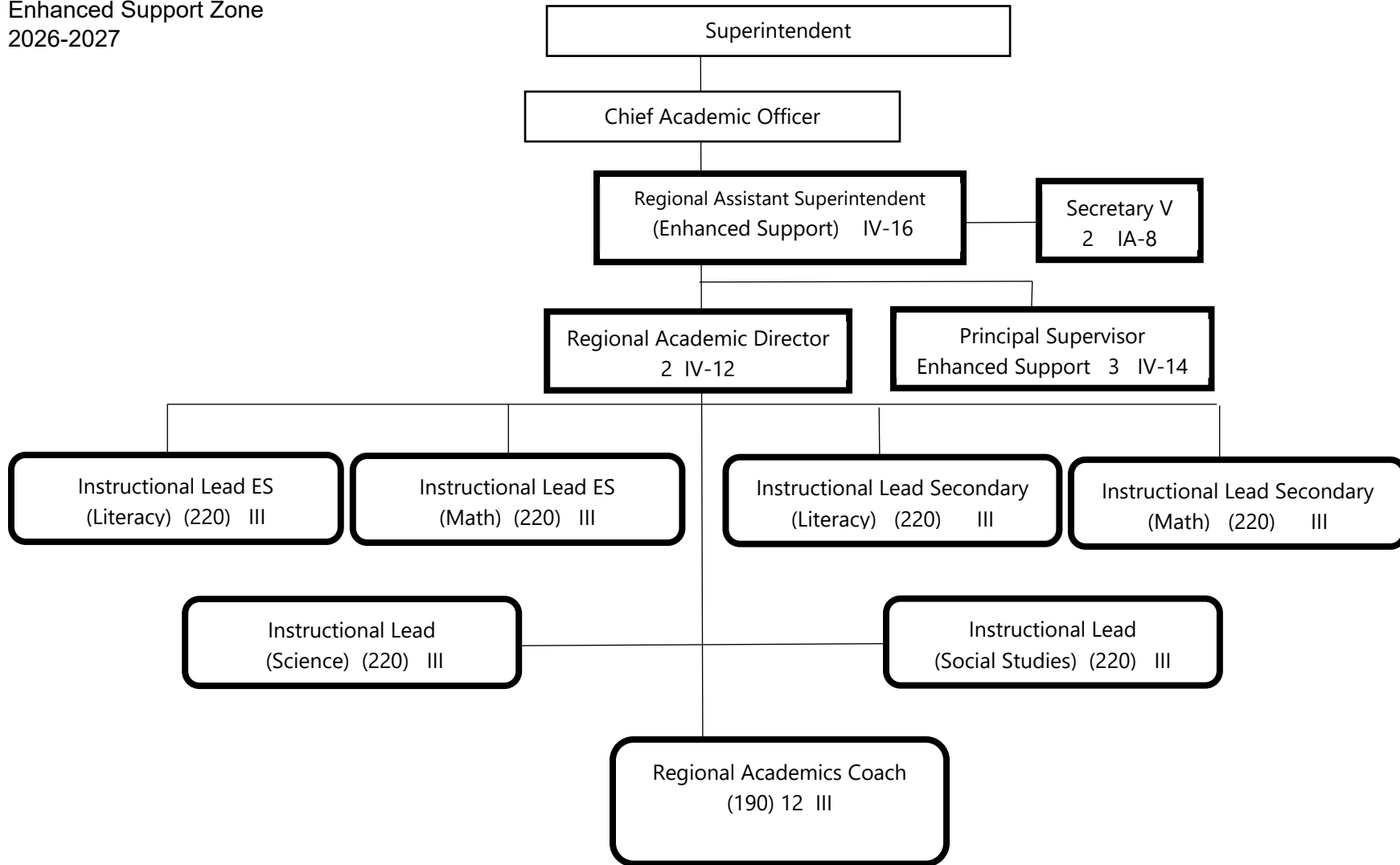
1. Add Regional Assistant Superintendent (High) IV-16
2. Add Secretary V IA-8 from D-6
3. Add Academic Director IV-12
4. Add Principal Supervisor HS 2 IV-14
5. Add Instructional Lead HS (Literacy) (220) III
6. Add Instructional Lead HS (Math) (220) III
7. Add Instructional Lead HS (Science) (220) III
8. Add Instructional Lead HS (Social Studies) (220) III
9. Add Regional Academics Coach (190) 7 III





Summary:
 General Fund Positions: **26**
 Categorical Fund Positions: **0**

1. Add Regional Assistant Superintendent (Enhanced Support) IV-16
2. Add Secretary V IA 8 from D-11
3. Add Academic Director 2 IV-12
4. Add Principal Supervisor Enhanced Support 3 IV-14
5. Add Instructional Lead ES (Literacy) (220) III
6. Add Instructional Lead ES (Math) (220) III
7. Add Instructional Lead Secondary (Literacy) (220) III
8. Add Instructional Lead Secondary (Math) (220) III
9. Add Instructional Lead (Science) (220) III
10. Add Instructional Lead (Social Studies) (220) III
11. Add Regional Academics Coach (190) 12 III
12. Add Secretary V



Summary:
 General Fund Positions: 26
 Categorical Fund Positions: 0