



FIELD OBSERVATION REPORT

Child Nutrition Building (Food Service Building, 202276 -CA8)

Date: 1/13/2026 Time: 9:30 AM

Weather: Warming/32°F

Observed by: Joseph Jones, AIA

Report No: 26

Trades Observed on Site: panel crew, painter, mechanical, electrical

1. Work observed in Progress

- a) Prime painting.
- b) Installing heatpumps and ductwork.
- c) Metal panels and insulation were being installed.
- d) Electricians were pulling wire.

2. General Observations

- a) The sheet metal crew was completing the last area requiring exterior metal panels.
- b) The concrete curbs were poured earlier in the day with a curb machine.



- c) Crushed stone was placed in the areas to be paved.

After the OAC meeting we moved 4 steel bollards from the front of the warehouse to the drive in front of the transformer and generator. We determined that they needed more protection than the building since the foundation at the building is high enough to catch a truck bumper.

- d) We moved two bollards to protect the concrete projection from the dock between the compactor and the dumpster.

- e) Crushed stone was being placed for the parking lot and ramp to the office entrance.

- f) The brick was cleaned and it looks much better.



- g) There is one stain on the brick on the east elevation that does not appear from the masonry operations.
- h) The aluminum window frames have not yet been sealed to the brick.
- i) The wallboard joint compound had been sanded.



- j) The control joints that were required for walls over 30' were in place.



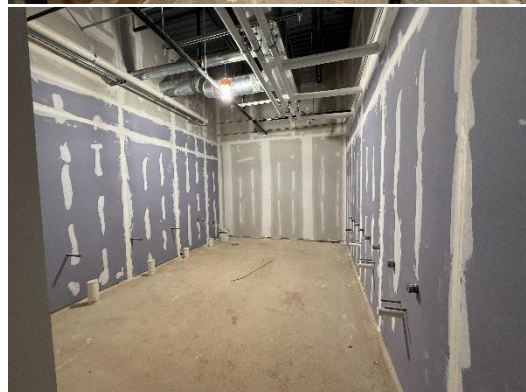
- k) Back boxes in walls were prepared to receive the devices.



- l) The heatpumps were being connected. On 1-14-26 a Teams meeting was conducted to rearrange some of the installed components to facilitate the removal of the heatpumps when necessary. The discussion about this is ongoing.



- m) The walls in the toilets appeared to be ready for tile.



- n) The overhead doors were not installed but at scheduled in the next few days.



- o) It appears that the expansion joint between the office area and dry food storage was successfully installed.



- p) Light appears to be getting into the expansion joint at the roof. This needs to be corrected.



- q) Preparations were made to install the walk-in box when it arrives on site.



3. Stored Material Observed:

- a) Metal panels and batt insulation.
- b) Plumbing fixtures.
- c) Electrical fixtures and trim.

4. Follow up items:

- a) Note any changes to the plans on the As-Built Drawings.

Follow up by:

☐ Architect, ☐ Owner, ☐ MEP Engineer, ☐ Structural Engineer,
☐ Civil Engineer ☒ Construction Manager, ☐ Other

Respectfully submitted,
JRA Architects
Joseph Jones, AIA,
Construction Contract Administrator

cc: 202276, CA8, HCS, Wehr, Bryan Sauer, B+K, CMTA, EDG, JRA