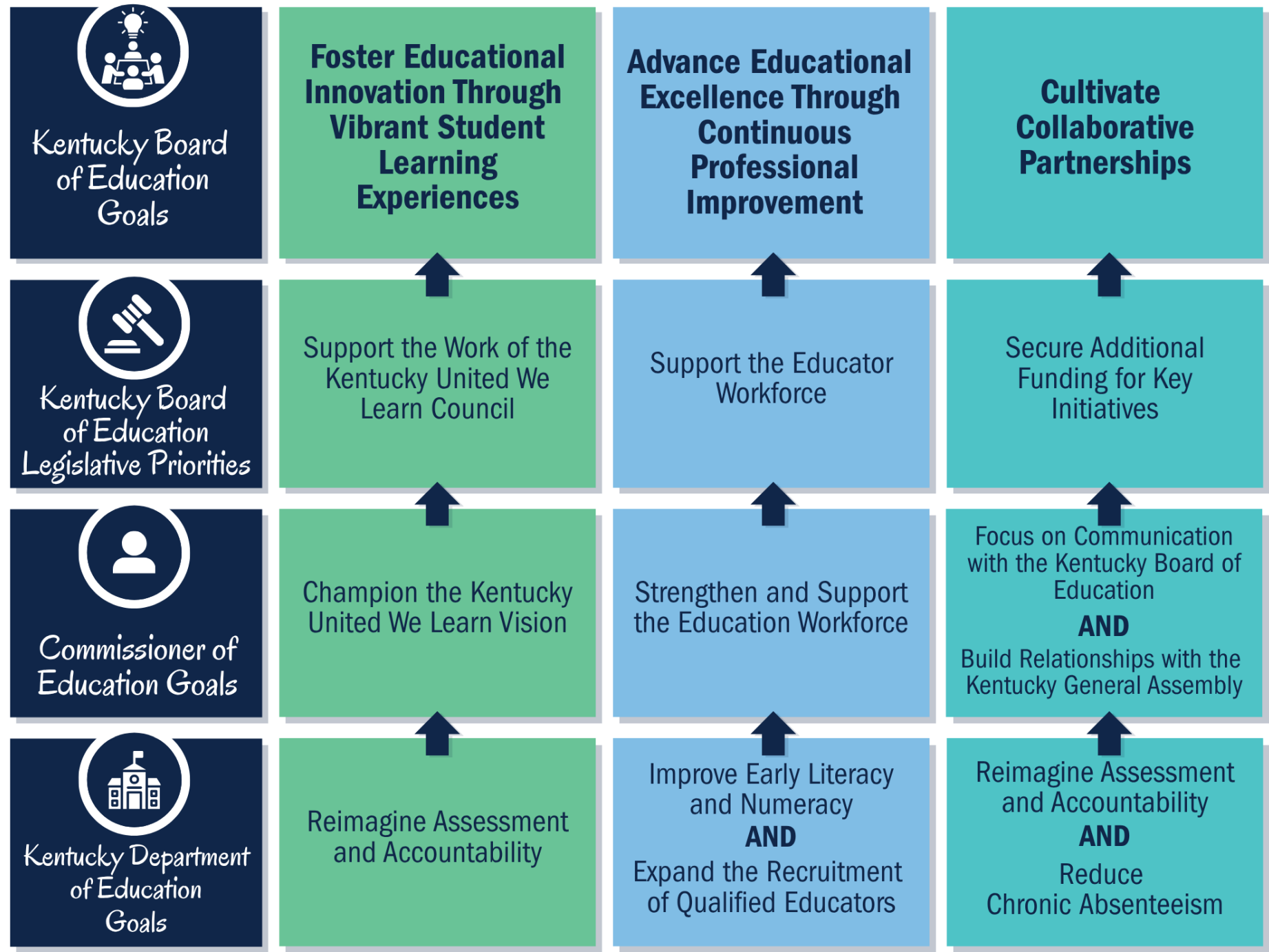


2025-2026 Kentucky Board of Education Measurable Goals

Karen Dodd, Chief Performance Officer

Kentucky Board
of Education
&
Kentucky Department
of Education

Goal Alignment



Goal 1: Foster Educational Innovation Through Vibrant Student Learning Experiences

KBE will advocate to support Kentucky teachers in elevating vibrant learning experiences through the adoption of a new assessment and accountability model by Spring 2026 as measured by the passage of legislation.

(aligns with legislative priority #1)

- **Support** educators to design and implement engaging, real-world and content-rich learning experiences that inspire students to participate actively and apply their knowledge meaningfully **as evidenced by the adoption of Vibrant Learning as a required element of the new Assessment and Accountability System.**
- **Support** the development and implementation of an accountability system that values innovative teaching practices and a vibrant learning environment aligned with community values **as evidenced by the adoption of local accountability as a required element of the new Assessment and Accountability System.** (was goal 2)
- **Promote** continuous improvement through community-based accountability measures, ensuring that all students have equitable access to high-quality education **as evidenced by the adoption of a new Assessment and Accountability System.** (was goal 2)
- **Explore** opportunities for high school transformation across the commonwealth aligned with workforce development **as evidenced by the High School Transformation quarterly meetings and incorporation of High School Transformation in the next phase of the Kentucky United We Learn Council mission.** (was goal 2)




**Foster Educational
Innovation Through Vibrant
Student Learning
Experiences**

Goal 2: Advance Educational Innovation Excellence Through Continuous Professional Improvement

KBE will advance educational excellence through continuous professional improvement to build a highly-skilled and well-supported educator workforce as measured by Kentucky Summative Assessment results in 3rd grade reading and mathematics.

(aligns with legislative priority #3)

- **Advance** statewide efforts to support educators in the implementation of high-quality Literacy and Numeracy instruction aligned to high-quality instructional resources **as evidenced by advocating for funding to sustain and expand numeracy and reading academies.**



**Advance Educational
Excellence Through
Continuous
Professional Improvement**

Goal 3: Cultivate Collaborative Partnerships

KBE will cultivate collaborative partnerships to enhance educational outcomes and enrich the educational environment for all students as measured by the passage of policies and regulations prioritized by the board.

(aligns with legislative priority #2)

- **Establish and sustain** strong partnerships with all education stakeholders, including families, policymakers and community members **as evidenced by collaboration between the High School Transformation Workgroup and the Kentucky United We Learn Council, as well as visits to schools and special education events** in order to:
 - Collaboratively enhance educational outcomes and support the holistic development of every student.
 - Encourage and strengthen statewide and local community support of professional educators.
 - Support Kentucky State Schools (School for the Deaf, School for the Blind and Area Technology Centers).
- **Strengthen** the educator workforce through enhanced collaboration with the Education Professional Standards Board (EPSB) and Kentucky Council on Postsecondary Education (CPE). Prioritize the recruitment, retention and diversification of the educator workforce to enrich the teaching and learning experience and the educational environment for all student. **Collaboration with EPSB will include cross-board participation as evidenced by each chair presenting reports to the other board and the proposed EPSB-KBE Research Practice Collaborative. The CPE collaboration will be evidenced through the work with the Commonwealth Education Continuum.** (was goal 1)



**Cultivate
Collaborative Partnerships**