



GARRARD COUNTY SCHOOLS



***Together at GCS,
we Grow,
Commit, and
Succeed—for
every student,
every day.***

As a district, we commit to creating a culture of growth, excellence, and equity where every decision, every classroom, and every learner is guided by high expectations, meaningful learning, and continuous improvement.



Commitment to a Growth Culture

We commit to cultivating a shared growth culture where students, educators, and leaders embrace continuous learning, reflection, and collaboration, and feel safe to take risks that lead to improvement.



Commitment to Standards- Driven Instruction and Assessment

We commit to designing and delivering high-impact instruction that is aligned to Kentucky Academic Standards and grounded in practices that ensure deep, meaningful learning for all students.



Commitment to Data-Driven Decision Making

We commit to using meaningful data and evidence to guide decisions at every level, ensuring that our actions are student-centered, equitable, and focused on improving outcomes for all learners.

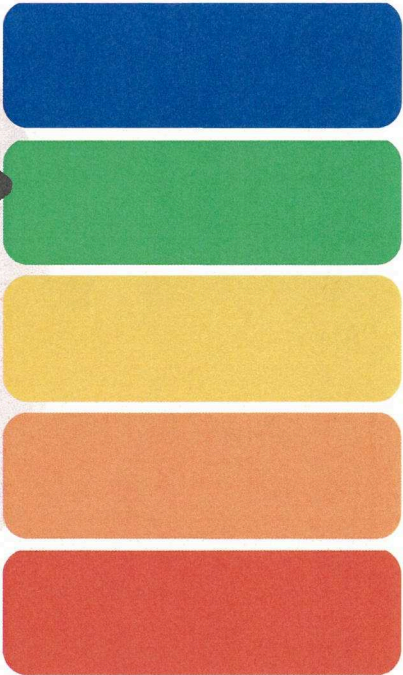


2025 Kentucky State Assessment Data

STUDENT DATA

Garrard County High School earned a Green-High rating with an overall score of 73.9. Postsecondary readiness grew from 99 to 111.9, and the graduation rate has risen from 94.3% to 100% over the past three years. Science proficiency also saw a significant increase, climbing 23% in just one year, reflecting the school's focus on academic growth and student success.

Overall School Rating



COMPARISON OF ACCOUNTABILITY DATA: 2022-2025

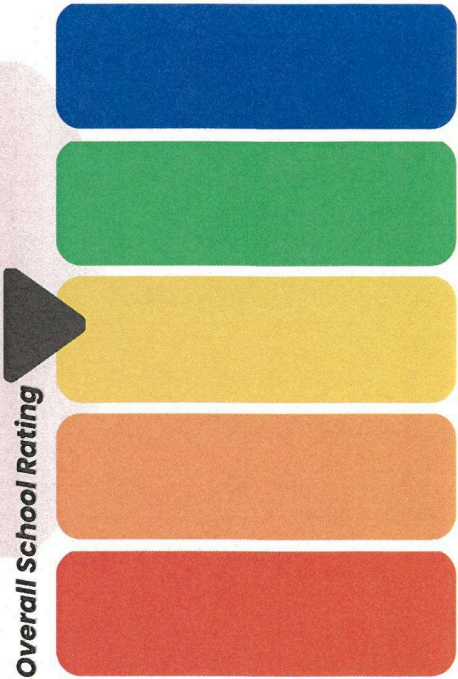
Category	2022	2023	2024	2025
Overall Score	51.6 Yellow	51.2 Green	61.9 Yellow	59.9 Green
Reading Percent Proficient/Distinguished	42%	47%	42%	43%
Math Percent Proficient/Distinguished	40%	38%	42%	38%
Science Percent Proficient/Distinguished	15%	15%	4%	27%
Social Studies Percent Proficient/Distinguished	31%	36%	38%	38%
Writing Percent Proficient/Distinguished	43%	39%	40%	45%
Post Secondary Readiness	78.2	115	99	111.9



2025 Kentucky State Assessment Data

STUDENT DATA

Garrard Middle School continues to make strong progress, with the Quality of School Climate and Safety Survey rising from 56 to 71.9. Writing proficiency increased by 10%, while social studies saw novice rates drop by 5% and proficiency rise by 6%, reflecting the school's ongoing commitment to student growth and success.



COMPARISON OF ACCOUNTABILITY DATA: 2022-2025

Category	2022	2023	2024	2025
Overall Score	51.6 Yellow	51.2 Yellow	61.9 Yellow	59.9 Yellow
Reading Percent Proficient/Distinguished	37%	42%	43%	43%
Math Percent Proficient/Distinguished	30%	30%	42%	42%
Science Percent Proficient/Distinguished	22%	20%	25%	29%
Social Studies Percent Proficient/Distinguished	34%	29%	35%	41%
Writing Percent Proficient/Distinguished	36%	36%	42%	52%
Quality of School Climate and Safety Survey Index	62.9	59.5	56.6	71.9



PAINT LICK ELEMENTARY SCHOOL

2025 Kentucky State Assessment Data

STUDENT DATA

Paint Lick Elementary earned a Green rating with a 79.5 overall score and High status. The school has only 7% novice in reading and writing and achieved Green-High status across every indicator, including math, reading, science, social studies, writing, and the survey. Over the past three years, PLE has also reduced novice performance in math by 26%.

Overall School Rating



COMPARISON OF ACCOUNTABILITY DATA: 2022-2025

Category	2022	2023	2024	2025
Overall Score	54.4 Yellow	62.8 Yellow	87 Blue	79.5 Green
Reading Percent Proficient/Distinguished	40%	44%	63%	62%
Math Percent Proficient/Distinguished	33%	30%	50%	50%
Science Percent Proficient/Distinguished	8%	30%	30%	Suppressed
Social Studies Percent Proficient/Distinguished	39%	40%	42%	53%
Writing Percent Proficient/Distinguished	39%	32%	36%	38%
Quality of School Climate and Safety Survey Index	76.7	90.5	91	81.3



2025 Kentucky State Assessment Data

STUDENT DATA

Lancaster Elementary earned Blue status with a very high overall rating of 86.1. Over the past three years, the school reduced math novice rates from 35% to 8% and increased proficiency from 40% to 68%. This year alone, LES cut reading novice by 13% and increased proficiency by 10%, while also cutting novice rates in science and writing by more than half.

Overall School Rating



COMPARISON OF ACCOUNTABILITY DATA: 2022-2025

Category	2022	2023	2024	2025
Overall Score	51.6 Orange	59.7 Yellow	68.9 Yellow	86.1 Blue
Reading Percent Proficient/Distinguished	33%	37%	43%	53%
Math Percent Proficient/Distinguished	40%	46%	56%	68%
Science Percent Proficient/Distinguished	21%	36%	35%	46%
Social Studies Percent Proficient/Distinguished	34%	25%	33%	35%
Writing Percent Proficient/Distinguished	18%	17%	28%	45%
Quality of School Climate and Safety Survey Index	69.5	75.3	77.8	88.9



2025 Kentucky State Assessment Data

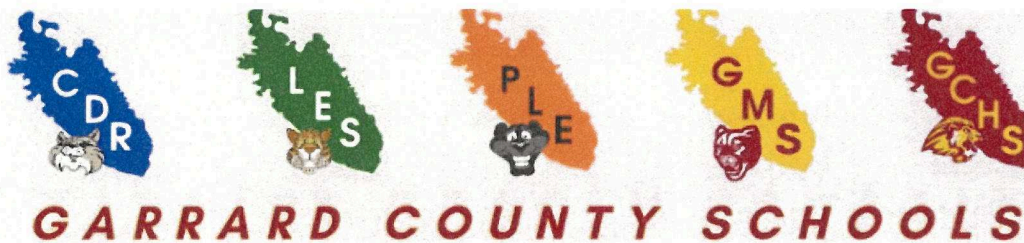
STUDENT DATA

Camp Dick Robinson maintained its very high Blue status with an 86.8 overall rating. The school cut novice reading rates in half to 8% and increased writing proficiency from 63% to 80%. Long-term math work that began in 2022 continues to show results, with proficiency up 13% and novice rates down 12%.



COMPARISON OF ACCOUNTABILITY DATA: 2022-2025

Category	2022	2023	2024	2025
Overall Score	68.7 Yellow	72 Green	83.9 Blue	86.8 Blue
Reading Percent Proficient/Distinguished	52%	52%	63%	64%
Math Percent Proficient/Distinguished	46%	48%	56%	59%
Science Percent Proficient/Distinguished	41%	43%	52%	42%
Social Studies Percent Proficient/Distinguished	50%	53%	51%	55%
Writing Percent Proficient/Distinguished	66%	63%	63%	80%
Quality of School Climate and Safety Survey Index	72.4	90.8	82.3	97.3



Components of an Ideal Lesson

Component	Description
Flashback	Flashbacks are a spiral review of previously taught content (previous units not within the current unit).
Learning Target	The learning target is a focused goal for the lesson and comes directly from the Kentucky Academic Standards.
Hook	A hook is used to grab the students' attention and focus their thoughts on the learning target. It creates curiosity for the lesson.
New Content	The new content is the body of the lesson. It is taught in chunks with the checks for understanding. The new content could include a mini-lesson by the teacher, reading, modeling/demonstrations, lecture, etc.
Checks for Understanding	The checks for understanding part of the lesson is when students have a chance to practice the learning. Examples are a cooperative learning strategy, independent work, practice, etc. This could be followed with another chunk of new content and another round of checks for understanding.
Learning Target	The teacher directs the students back to the learning target to emphasize the goal for the lesson. Students should verbalize to themselves or others what they have learned in order to increase retention.
Formative Assessment/Exit Slip	A formative assessment (most commonly in the form of an exit slip) is given to check for mastery of the day's learning target. This gives the teacher the information about which students successfully mastered the learning target and which students may need a reteaching opportunity.