



# **Update on FCPS Construction / Renovation Projects**

November 24, 2025

# Rise STEM Academy for Girls



# Rise STEM Academy for Girls



➤ Architect:	Ross Tarrant Architects
➤ General Contractor:	D.W. Wilburn, Inc.
➤ GC Contract Sum:	\$48,800,100.00
➤ Total Project Cost:	\$58,460,689.35
➤ Change Orders to Date (3):	\$578,441.19
➤ Scheduled Contract Completion Date:	June 2026
➤ % of Contract Completed:	67%
➤ Revised Completion Date per GC:	N/A
➤ Weekly Construction Updates:	<a href="http://www.fcps.net/risestem">www.fcps.net/risestem</a>

# Rise STEM Academy for Girls



## ➤ **Completed Work:**

- Continued storm system work.
- Continued above ceiling work.
- Continued roofing installation.
- Continued site concrete work.
- Continued gyp board installation.
- Continue floor prep for terrazzo.
- Continued tile installation.

## ➤ **Upcoming Work/Look Ahead:**

- Continued storm system work.
- Continued above ceiling work.
- Continued roofing installation.
- Continued site concrete work.
- Continued gyp board installation.
- Continue floor prep for terrazzo.
- Continued tile installation.

# Rise STEM Academy for Girls



## Mechanical Closet Work in Progress



# Rise STEM Academy for Girls



MDF Room Work In Progress



Week Ending November 7, 2025

# Rise STEM Academy for Girls



Stud Frame Work In Progress



Week Ending November 7, 2025

# Rise STEM Academy for Girls



Tile Work In Progress



Week Ending November 7, 2025



# Rise STEM Academy for Girls



Above Ceiling Work In Progress



Week Ending November 7, 2025

# Rise STEM Academy for Girls



Terrazzo Floor Preparation in Progress



Week Ending November 7, 2025

# Rise STEM Academy for Girls



Roof Work in Progress



Week Ending November 7, 2025

# Rise STEM Academy for Girls



Site Work In Progress



Week Ending November 7, 2025

# Henry Clay High (New)





# Henry Clay High (New)



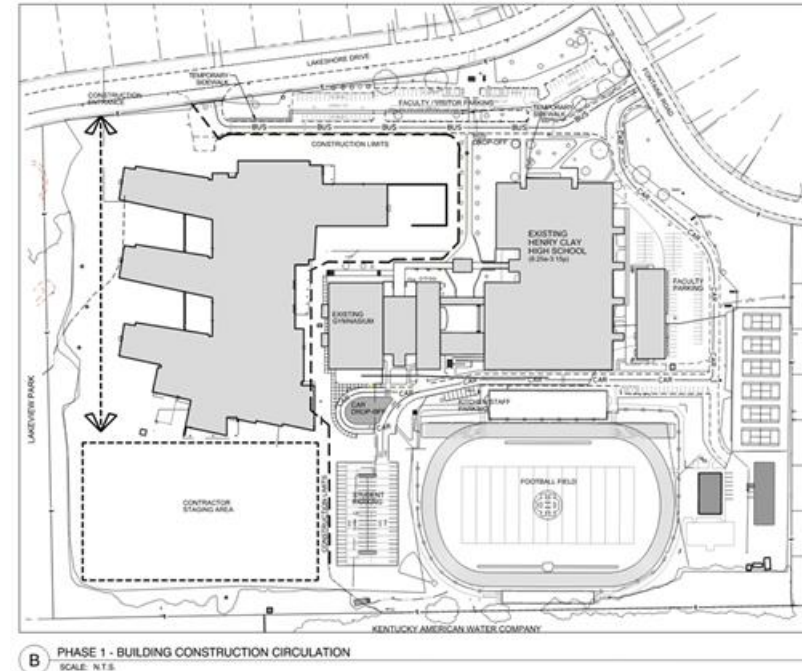
- Architect: Tate Hill Jacobs Architects
- General Contractor: D.W. Wilburn, Inc.
- GC Contract Sum: \$153,218,800.00
- Total Project Cost: \$178,900,227.60
- Change Orders to Date (0): \$0
- Scheduled Contract Completion Date: June 2028 (Building)  
June 2029 (Site/Athletics)
- % of Contract Completed: 21%
- Revised Completion Date per GC: N/A
- Weekly Construction Updates: [www.fcps.net/HCCconstruction](http://www.fcps.net/HCCconstruction)

# Henry Clay High (New)



## ➤ Completed Work:

- Geothermal well field drilling at the south end of the site is complete.
- KAWC installation of main waterline is complete.
- ICF and CIP formwork placing and pouring, and the installation of IFAs at ICF walls is in progress.
- Laying of CMU walls and the installation of hollow metal frames is underway.
- Under-slab plumbing/electrical and concrete slabs are in progress.
- Area A Level 2 steel erection is nearly complete.
- Area G foundations are in progress.
- Area D grade beams are complete and ICF walls and IFAs in this area are underway.
- Area A Level 1 ductwork and cable tray installation is in progress.

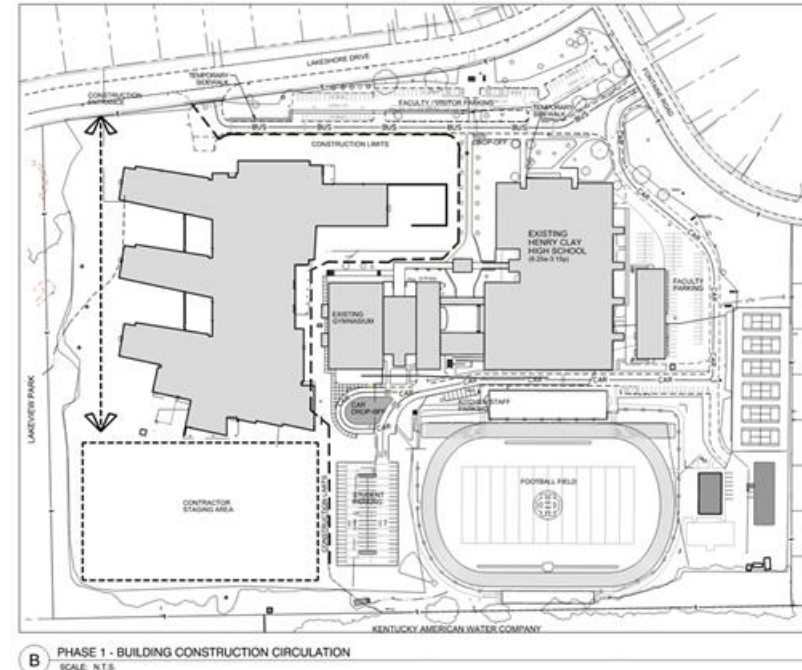


# Henry Clay High (New)



## ➤ Upcoming Work/Look Ahead:

- Continue hauling in fill materials and continue site grading.
- Continue sanitary piping and manholes.
- Continue pouring ICF and CIP concrete walls.
- Continue laying CMU walls.
- Continue with under-slab plumbing and electrical.
- Continue pouring concrete slabs on grade.
- Continue installing IFAs and hollow metal frames.
- Continue with ICF walls in Area D and foundations in Area G.
- Continue with steel erection for Level 2.
- Continue with ductwork and cable tray installation at Area A Lvl 1.





# Henry Clay High (New)



Area A – Level 2 ICF and Installation of IFA Frames in Progress

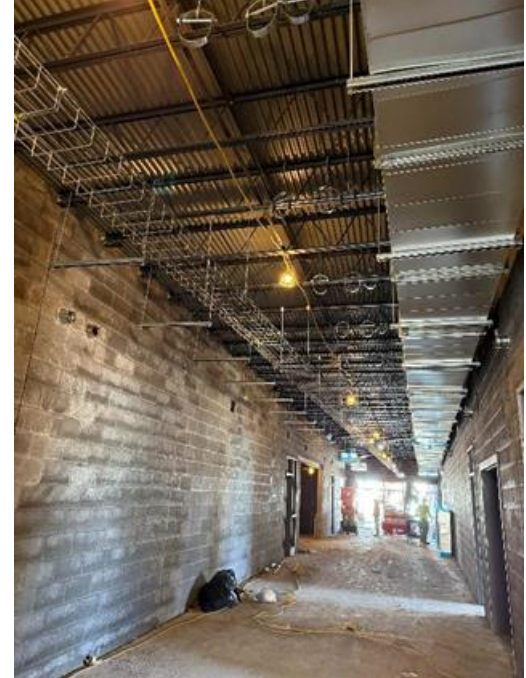


Week Ending November 7, 2025

# Henry Clay High (New)



Area A – Level 1 Ductwork and Cable Tray Installation in Progress



Week Ending November 7, 2025



# Henry Clay High (New)



Area A – Level 2 Steel Erection, Laying CMU Walls, Installation of Hollow Metal and IFA Frames



Week Ending November 7, 2025

# Henry Clay High (New)



Area D ICF and IFA Frame Installation in Progress



Week Ending November 7, 2025



# Henry Clay High (New)



Area D ICF and Storm Shelter Door Surrounds in Progress



Week Ending November 7, 2025

# Henry Clay High (New)



Area B Foundations and Laying CMU Walls in Progress



Week Ending November 7, 2025

# Henry Clay High (New)



Area C (Level 1) Floor Slab, ICF Walls & IFA Frames in Progress



Week Ending November 7, 2025



# Henry Clay High (New)



Overview of Construction Progress in Areas A, B, C, D and G



Week Ending November 7, 2025



# New Elementary on Greendale Rd



# New Elementary on Greendale Rd



- Architect: Sherman Carter Barnhart Architects
- Construction Manager (CM): Codell Construction
- Construction Contract Cost: \$41,446,729.12
- Total Project Cost: \$50,569,587.60
- Change Orders to Date (3): (\$2,904.00)
- Scheduled Contract Completion Date: July 2027
- % of Contract Completed: 9.9%
- Revised Completion Date per CM: N/A
- Weekly Construction Updates: [www.fcps.net/GreendaleES](http://www.fcps.net/GreendaleES)

# New Elementary on Greendale Rd



## ➤ **Completed Work:**

- Placement of concrete is complete through Lobby 100A.
- Installation of the Insulated Concrete Forms (ICF) continues.
- Laying of interior CMU masonry continues in Area B.
- Installation of door frames continues through Area B.
- Drilling of the geothermal wells continue.
- The retention pond is operating properly.

## ➤ **Upcoming Work/Look Ahead:**

- Continue the drilling of the geothermal wells.
- Continuation of setting and filling the ICF forms.
- Completion of footing placement.
- Continue placing concrete floor slabs.

# New Elementary on Greendale Rd



Drilling the Geothermal Wells



Week Ending November 7, 2025

# New Elementary on Greendale Rd



Installed ICF forms along the East side of the Building from Interior



Week Ending November 7, 2025

# New Elementary on Greendale Rd



Placed Concrete Slab Area B



Week Ending November 7, 2025



# New Elementary on Greendale Rd



Laying of Interior CMU and Setting Door Frames



Week Ending November 7, 2025

# New Elementary on Greendale Rd



Laying of Masonry Continues



Week Ending November 7, 2025



# New Elementary on Greendale Rd



## Lower Retention Pond



Week Ending November 7, 2025



**Thank you!**