



FIELD OBSERVATION REPORT

Child Nutrition Building (Food Service Building, 202276 -CA8)

Date: 10/14/2025 Time: 10:30 AM

Weather: Clear

Observed by: Joseph Jones, AIA

Report No: 18

Trades Observed on Site: Concrete, Masons, Sheet Metal, Roofers, Framers, Plumbers, HVAC

1. Work observed in Progress

- a) There were numerous workers on site for each of the trades.
- b) Concrete workers were pouring the diamonds at columns.
- c) Sheet metal installers were installing liner panels at the north end of the warehouse.
- d) Masons were laying bricks on the west side of the office area.
- e) Roofers were installing the roofing system.
- f) Framers were installing metal framing.
- g) HVAC installers were pouring concrete pads for mechanical equipment.

2. General Observations

- a) Roofers were installing the roofing system on the office and warehouse areas.

We had a pre-roofing conference on 10-9-2025 to discuss roof details and installation procedures.



- b) Concrete was being placed in the diamonds at the columns. This will complete the floor slabs.



- c) Concrete pads were being poured in the mechanical room.



- d) Masons were laying brick over rigid insulation on the north side of the office area.

The first three courses below the base flashing had cured enough that the brickwork and joints could be observed. The work appeared to be uniform in appearance.



- e) Most of the light gauge framing was in place in the office area.

The framer replaced door frame jamb and head studs to comply with the requirement for heavy duty studs (HDS).

Clips that come with the studs were installed to connect the head stud to the jamb studs to avoid screws which will cause the wallboard to bulge at the frame heads.



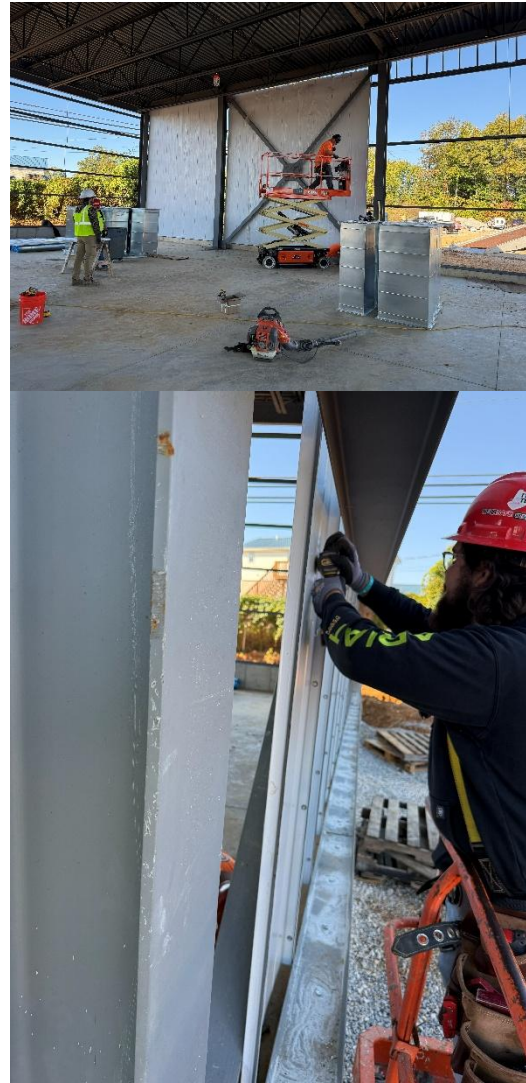
- f) Piping and ductwork had been installed in the ceiling spaces for the office area.



- g) The sheathing and weather barrier was being installed on the office area.



- h) The sheet metal liner panels were being installer on the north end of the warehouse.



- i) Plywood was installed in the data closet.



3. Stored Material Observed:

- a) Light gauge steel framing and wallboard.
- b) Crushed stone.
- c) Masonry materials.
- d) Roofing materials.
- e) Plumbing piping.
- f) Electrical conduits, boxes and accessories.

4. Follow up items:

- a) Note any changes to the plans on the As-Built Drawings.

Follow up by:

☐ Architect, ☐ Owner, ☐ MEP Engineer, ☐ Structural Engineer,
☐ Civil Engineer ☒ Construction Manager, ☐ Other

Respectfully submitted,
JRA Architects
Joseph Jones, AIA,
Construction Contract Administrator

cc: 202276, CA8, HCS, Wehr, Joby Smith, B+K, CMTA, EDG, JRA