

FIELD OBSERVATION REPORT #15

2025-09 - New Board Office

■ TO:	Kenton County Board of Education 1055 Eaton Drive Ft. Wright, KY 41017	■ DATE:	2025.09.23
ATTENTION:	Mr. Mike Blau		
■ FROM:	Mark Perry mperry@embosdesign.com 906 Monmouth Street Newport, KY 41071 V: 859.431.8612 • D: 859.578.6013	■ PROJECT:	New Board Office KCSD BG#24-084
COPIES TO:	Mr. Matt Rigg; Mrs. Carrie Hooten, Mr. Brian Vanover	PROJECT NO.:	22-106

■ WE TRANSMIT THE ATTACHED ITEMS VIA: **eComm**

PURPOSE	<input checked="" type="checkbox"/> For your use	DISPOSITION	<input type="checkbox"/> No exceptions noted
	<input type="checkbox"/> As requested		<input type="checkbox"/> Exceptions noted, Revise as indicated.
	<input type="checkbox"/> For review and comment		<input type="checkbox"/> REJECTED: REVISE AND RESUBMIT
	<input type="checkbox"/> For information		
	<input checked="" type="checkbox"/> For record		
	<input type="checkbox"/> For approval		
	<input type="checkbox"/>		

COPIES	DATE	DESCRIPTION	PAGES
1	2025-09	Field Observation Report	10

Division 01: General Requirements

01.01: 2025.09.16 – Temporary perimeter fencing was being removed. Monarch had vacated their trailers and moved into Classroom #141.

Division 03: Concrete

03.01: 2025.09.02 – Footings for exterior patio benches had been poured.

Division 04: Masonry

04.01: 2025.09.11 – Masonry benches had been erected at the exterior patio.

Division 06: Woods and Plastics

06.01: 2025.09.02 – Solid surface window sills and countertops for the first floor were on-site and installation had begun.

06.02: 2025.09.11 – Solid surface countertop installation had moved to the second floor.

06.03: 2025.09.16 – Solid surface window sill installation appeared largely complete on first and second floors. Third floor sills and countertops had been delivered.

Division 07: Thermal and Moisture Protection

07.01: 2025.09.02 – Wood-look metal panel installation was largely complete at the exterior patios. A crew was active at the south end of the east elevation.

07.02: 2025.09.11 – Metal panel installation appeared complete on the north elevation and Area B west elevation.

07.03: 2025.09.16 – Blue panels were actively being installed at the entry bump-out.

Division 08: Doors and Windows

08.01: 2025.09.16 – Third floor wood doors had been delivered.

Division 09: Finishes

09.01: 2025.09.02 – First floor restroom tile work was largely complete, and work was active at the second floor.

09.02: 2025.09.02 – Gypsum board finishing was nearing completion in the board room. A lack of control joints was pointed out to Monarch.

09.03: 2025.09.02 – Ceiling grid installation at the third floor was largely complete.

09.04: 2025.09.02 – Second floor restroom tile work was largely complete in the primary restroom group.

09.05: 2025.09.02 – All carpet and LVT was reported as having been delivered.

09.06: 2025.09.16 – Missing control joints had been installed in the board room. Walls and ceilings had received paint a first coat of finish paint.

Division 10: Specialties

10.01: 2025.09.11 – Exterior canopy installation had begun.

Division 20-28: MEP

20-28.01: 2025.09.02 – The replacement breaker required for electric service was reported to ship this date.

20-28.02: 2025.09.02 – Some restroom plumbing fixtures had been installed on the first floor.

20-28.03: 2025.09.02 – Flex duct and air devices were observed at the second floor offices.

20-28.04: 2025.09.11 – Primary electric had been energized just prior to a planned on-site meeting to review an electrical change of work proposal. Light fixtures had been hung in the entry vestibule, and several corridor lights had been installed at the third floor.

20-28.05: 2025.09.11 – Plumbing fixtures had been installed at the second floor restroom group.

20-28.06: 2025.09.16 – Some second floor light fixtures had been energized. Outlets were reported complete at the second and third floors.

20-28.07: 2025.09.16 – The geothermal well field had been purged and filled with glycol at a concentration meant for the field and interior piping once on-line.

20-28.08: 2025.09.16 – Flex duct and air devices were to be complete at the third floor by end of day.

Division 32: Exterior Improvements

32.01: 2025.09.16 – Sidewalk installation had reached the north end of the building along the west elevation.

32.02: 2025.09.16 – Light pole bases had been installed from Tuscanyview to the south parking lot.

CONSTRUCTION PHOTOS

2025.09.02 – West elevation



2025.09.02 – Exterior from southwest



2025.09.02 – Footings for patio benches outside of board room



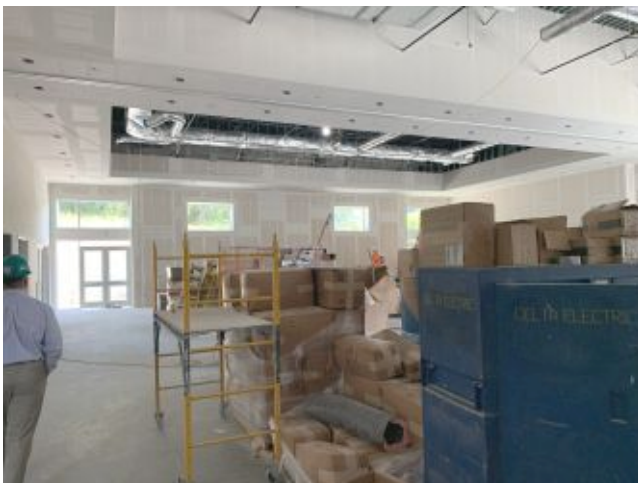
2025.09.02 – Footings for patio benches outside of board room



2025.09.02 – East elevation



2025.09.02 – Board room looking south



2025.09.02 – Board room looking east



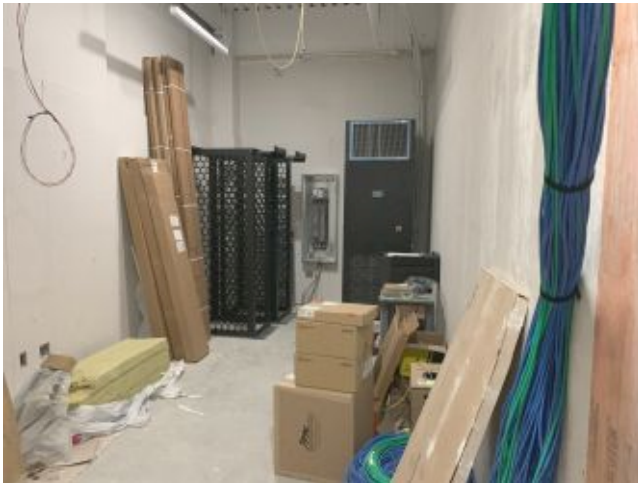
2025.09.02 – Entry lobby



2025.09.02 – Women #112



2025.09.02 – Men #111



2025.09.02 – MDF #251



2025.09.02 – Men #245



2025.09.02 – Women #246



2025.09.02 – Kitchen/Break #210



2025.09.02 – Toilet #230



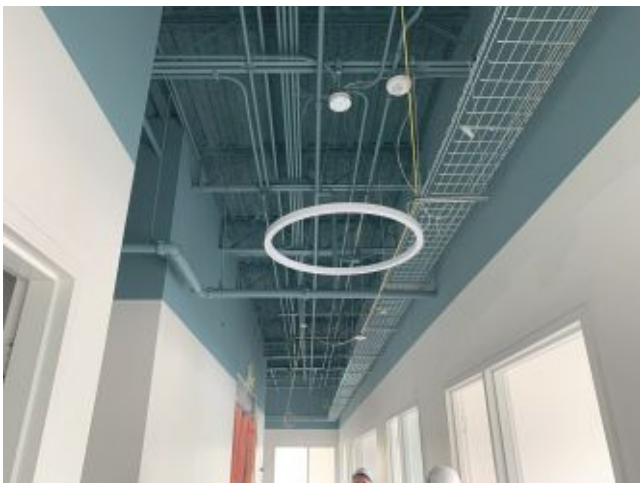
2025.09.02 – Third floor east corridor



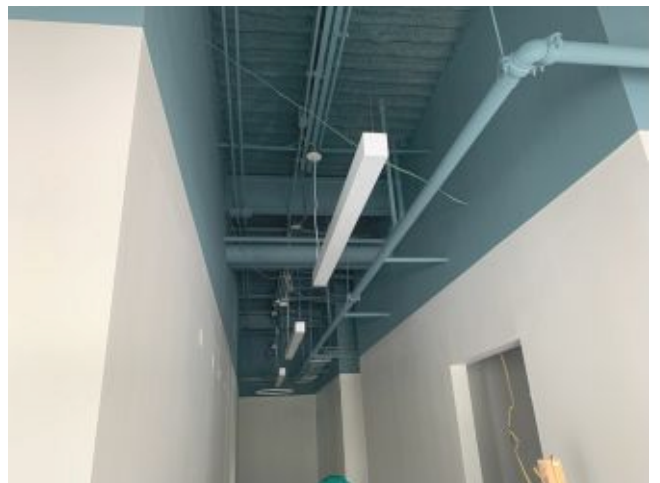
2025.09.11 – Vestibule light fixtures



2025.09.11 – Vestibule from Office #206



2025.09.11 – Third floor west corridor



2025.09.11 – Third floor restroom corridor



2025.09.11 – Casework staged at third floor



2025.09.11 – Looking towards Kitchen/Break #305



2025.09.11 – Large Conference #306



2025.09.11 – Exterior, northeast corner



2025.09.11 – Exterior, east stair tower



2025.09.11 – Exterior, north elevation



2025.09.11 – West elevation, north end



2025.09.11 – East elevation



2025.09.11 – East elevation at board room



2025.09.11 – Patio bench



2025.09.16 – South elevation



2025.09.16 – East elevation at board room



2025.09.16 – West elevation at sawtooth



2025.09.16 – West elevation at sawtooth



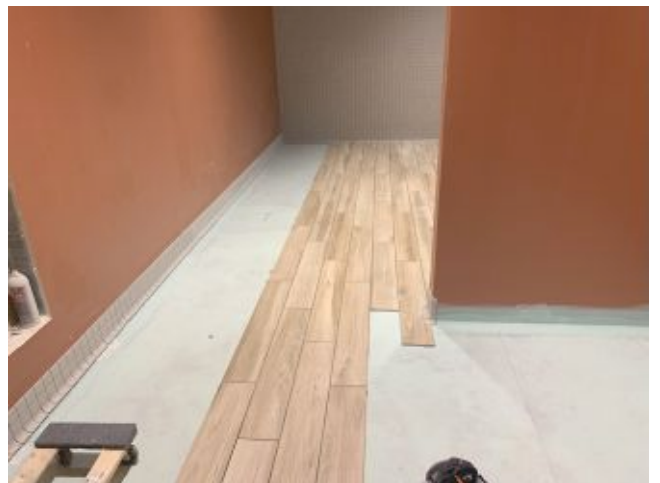
2025.09.16 – Entry drive



2025.09.16 – Classroom #141



2025.09.16 – Window sill in Office #142



2025.09.16 – Men #352



2025.09.16 – Women #353



2025.09.16 – Wood doors staged on third floor



2025.09.16 – Glass installed Kitchen/Break #305



2025.09.16 – Lights energized in Conference Room #212



2025.09.16 – Lights in Conference Room #209



2025.09.16 – Entry Lobby lights from second floor



2025.09.16 – Conference Room #202



2025.09.16 – Board room looking east



2025.09.16 – Board room looking south



2025.09.16 – Catering #105

- ☐ Please acknowledge receipt of transmitted items.
- ☐ Return transmitted items to eMBOSS Design ^{PSC}.

END