

AIA® Document G731™ – 2019

Change Order, Construction Manager as Adviser Edition

PROJECT: (name and address)

Christian County High School

5185 Fort Campbell Blvd

Hopkinsville, KY 42240

OWNER: (name and address)

Christian County Board of Education

200 Glass Avenue Hopkinsville, KY 42240

CONTRACTOR: (name and address)

Stewart Richey Steel

2137 Glen Lily Road Bowling Green, KY 42101

CONTRACT INFORMATION:

Contract For: BP 050-02 Structural &
Misc. Steel

Date: September 08, 2023

CHANGE ORDER INFORMATION:

Change Order Number: 085

Date: August 27, 2025

ARCHITECT: (name and address)

Hafer PSC

101 E. Second Street, Suite 101 Owensboro, KY 42303

CONSTRUCTION MANAGER: (name and address)

Alliance Corporation

116 E. College Street Glasgow, KY 42141

THE CONTRACT IS CHANGED AS FOLLOWS:

(Insert a detailed description of the change and, if applicable, attach or reference specific exhibits. Also include agreed upon adjustments attributable to executed Construction Change Directives.)

Cost associated with bollards and gates with North Dumpster Enclosure per PR #49.

The original Contract Sum was	\$	5,791,514.00
Net change by previously authorized Change Orders	\$	3,024.50
The Contract Sum prior to this Change Order was	\$	5,794,538.50
The Contract Sum will be increased by this Change Order in the amount of	\$	7,619.00
The new Contract Sum including this Change Order will be	\$	5,802,157.50

The Contract time will be unchanged by Zero(0) days.

The Contractor's Work shall be substantially complete on .

NOTE: This Change Order does not include adjustments to the Contract Sum or Guaranteed Maximum Price, or the Contract Time, that have been authorized by Construction Change Directive until the cost and time have been agreed upon by both the Owner and Contractor, in which case a Change Order is executed to supersede the Construction Change Directive.

NOT VALID UNTIL SIGNED BY THE ARCHITECT, CONSTRUCTION MANAGER, CONTRACTOR, AND OWNER.

ARCHITECT (Signature)

BY: Eric Rang, Hafer PSC

(Printed name, title, and license number if required)

Date

CONSTRUCTION MANAGER (Signature)

BY: Kevin Hitchel, Alliance Corporation

(Printed name and title)

Date

CONTRACTOR (Signature)

BY: Steve Montgomery, Stewart Richey Steel

(Printed name and title)

Date

OWNER (Signature)

BY: Christopher Bentzel, Christian County Board of Education

(Printed name and title)

Date



Christian County High School

Stewart Richey Steel

85.) 050-02

AMOUNT

COST BREAKDOWN TOTAL	\$	7,619.00
-----------------------------	-----------	-----------------

Bollards and gates associated with North Dumpster Enclosure per PR #49

(ATTACH PR)

OTHER

PROPOSAL REQUEST

Project:	Christian County High School 5185 Ft. Campbell Blvd Hopkinsville, KY 42240	PR No.:	049
		Date:	July 10, 2025
Owner:	Christian County Public Schools 222 Glass Ave Hopkinsville, KY 42240	Project Number:	2106-204
		Contract for:	Mason, General, Civil, Steel
To:	Kevin Hitchell Alliance Corporation 116 E. College Street Glasgow, KY 42141		
RE:	North Dumpster Enclosure		

Please submit an itemized quotation for changes in the Contract Sum and/or Time incidental to proposed modifications to the Contract Documents described herein.
THIS IS NOT A CHANGE ORDER NOR A DIRECTION TO PROCEED WITH THE WORK DESCRIBED HEREIN.

Description:

1. Provide a price to construct dumpster enclosure as shown on A1.1D, and modify parking lot surface to provide concrete pad as shown on attached civil drawings.

Attachments: A1.1D, C3.01, C3.1, C4.1

By: Eric Rang, Rick Harper

CC: Steve Harding, Jason Wilson



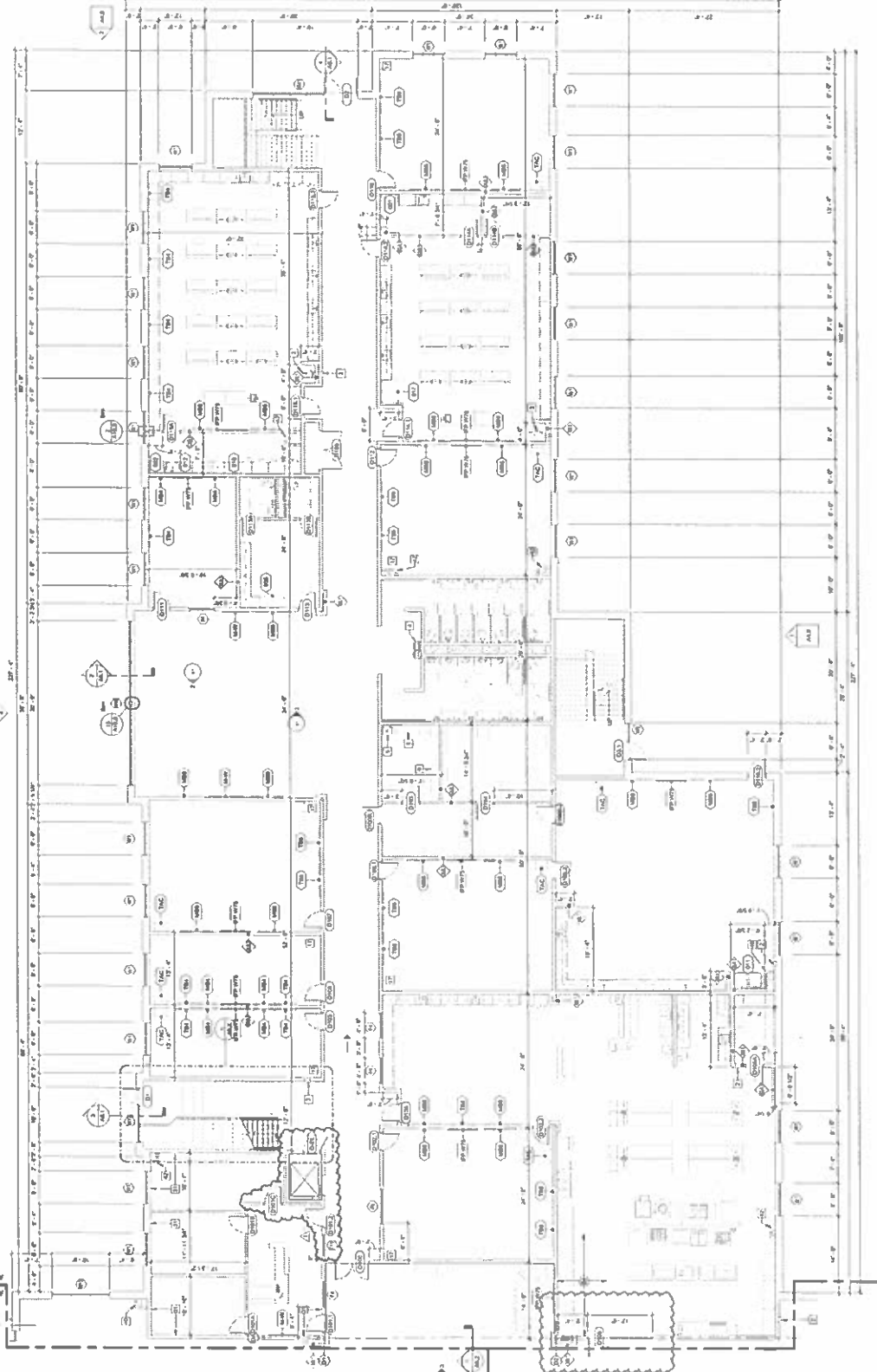
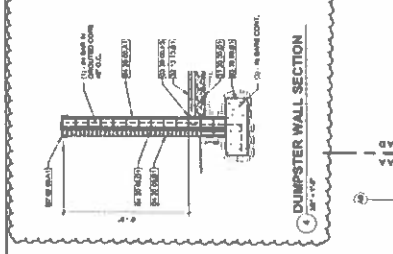
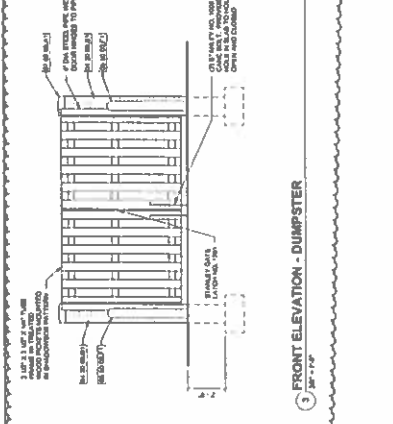
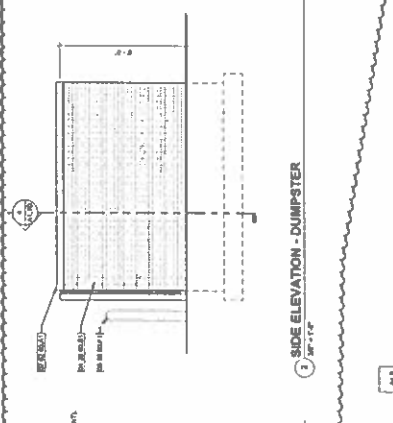
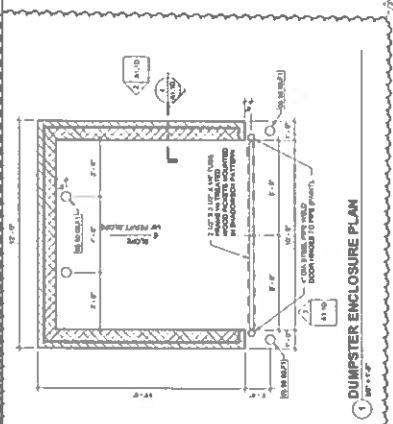
GENERAL FLOOR PLAN NOTES:

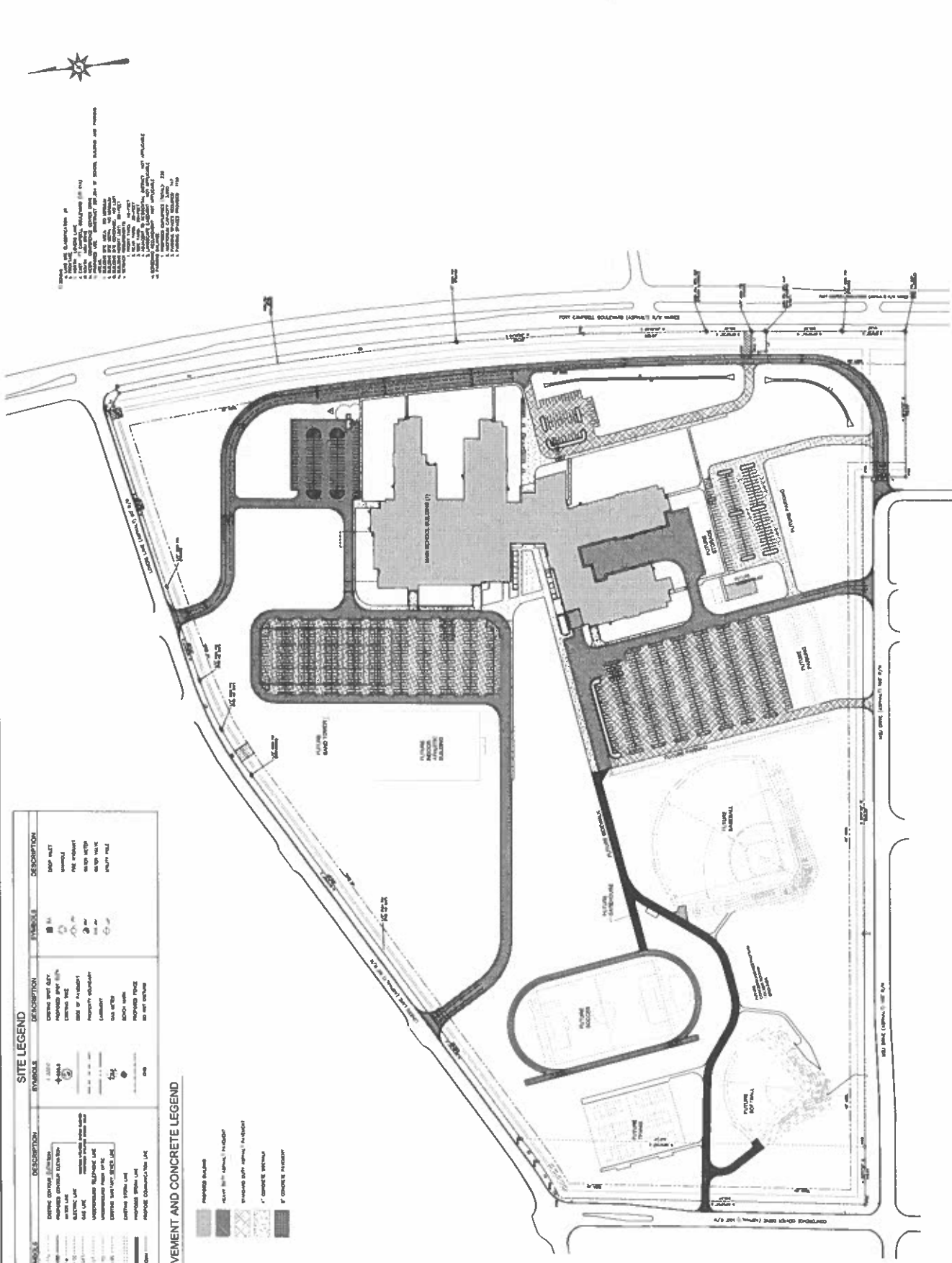
1. REFER TO GENERAL FLOOR PLAN FOR DIMENSIONS, NOTES.

FLOOR PLAN

REFERENCE NOTES:

1. HAZARDOUS WASTE TREATMENT PLANT
2. HAZARDOUS WASTE TREATMENT PLANT
3. HAZARDOUS WASTE TREATMENT PLANT
4. HAZARDOUS WASTE TREATMENT PLANT
5. HAZARDOUS WASTE TREATMENT PLANT
6. HAZARDOUS WASTE TREATMENT PLANT
7. HAZARDOUS WASTE TREATMENT PLANT
8. HAZARDOUS WASTE TREATMENT PLANT
9. HAZARDOUS WASTE TREATMENT PLANT
10. HAZARDOUS WASTE TREATMENT PLANT
11. HAZARDOUS WASTE TREATMENT PLANT
12. HAZARDOUS WASTE TREATMENT PLANT
13. HAZARDOUS WASTE TREATMENT PLANT
14. HAZARDOUS WASTE TREATMENT PLANT
15. HAZARDOUS WASTE TREATMENT PLANT
16. HAZARDOUS WASTE TREATMENT PLANT
17. HAZARDOUS WASTE TREATMENT PLANT
18. HAZARDOUS WASTE TREATMENT PLANT
19. HAZARDOUS WASTE TREATMENT PLANT
20. HAZARDOUS WASTE TREATMENT PLANT
21. HAZARDOUS WASTE TREATMENT PLANT
22. HAZARDOUS WASTE TREATMENT PLANT
23. HAZARDOUS WASTE TREATMENT PLANT
24. HAZARDOUS WASTE TREATMENT PLANT
25. HAZARDOUS WASTE TREATMENT PLANT
26. HAZARDOUS WASTE TREATMENT PLANT
27. HAZARDOUS WASTE TREATMENT PLANT
28. HAZARDOUS WASTE TREATMENT PLANT
29. HAZARDOUS WASTE TREATMENT PLANT
30. HAZARDOUS WASTE TREATMENT PLANT
31. HAZARDOUS WASTE TREATMENT PLANT
32. HAZARDOUS WASTE TREATMENT PLANT
33. HAZARDOUS WASTE TREATMENT PLANT
34. HAZARDOUS WASTE TREATMENT PLANT
35. HAZARDOUS WASTE TREATMENT PLANT
36. HAZARDOUS WASTE TREATMENT PLANT
37. HAZARDOUS WASTE TREATMENT PLANT
38. HAZARDOUS WASTE TREATMENT PLANT
39. HAZARDOUS WASTE TREATMENT PLANT
40. HAZARDOUS WASTE TREATMENT PLANT
41. HAZARDOUS WASTE TREATMENT PLANT
42. HAZARDOUS WASTE TREATMENT PLANT
43. HAZARDOUS WASTE TREATMENT PLANT
44. HAZARDOUS WASTE TREATMENT PLANT
45. HAZARDOUS WASTE TREATMENT PLANT
46. HAZARDOUS WASTE TREATMENT PLANT
47. HAZARDOUS WASTE TREATMENT PLANT
48. HAZARDOUS WASTE TREATMENT PLANT
49. HAZARDOUS WASTE TREATMENT PLANT
50. HAZARDOUS WASTE TREATMENT PLANT
51. HAZARDOUS WASTE TREATMENT PLANT
52. HAZARDOUS WASTE TREATMENT PLANT
53. HAZARDOUS WASTE TREATMENT PLANT
54. HAZARDOUS WASTE TREATMENT PLANT
55. HAZARDOUS WASTE TREATMENT PLANT
56. HAZARDOUS WASTE TREATMENT PLANT
57. HAZARDOUS WASTE TREATMENT PLANT
58. HAZARDOUS WASTE TREATMENT PLANT
59. HAZARDOUS WASTE TREATMENT PLANT
60. HAZARDOUS WASTE TREATMENT PLANT
61. HAZARDOUS WASTE TREATMENT PLANT
62. HAZARDOUS WASTE TREATMENT PLANT
63. HAZARDOUS WASTE TREATMENT PLANT
64. HAZARDOUS WASTE TREATMENT PLANT
65. HAZARDOUS WASTE TREATMENT PLANT
66. HAZARDOUS WASTE TREATMENT PLANT
67. HAZARDOUS WASTE TREATMENT PLANT
68. HAZARDOUS WASTE TREATMENT PLANT
69. HAZARDOUS WASTE TREATMENT PLANT
70. HAZARDOUS WASTE TREATMENT PLANT
71. HAZARDOUS WASTE TREATMENT PLANT
72. HAZARDOUS WASTE TREATMENT PLANT
73. HAZARDOUS WASTE TREATMENT PLANT
74. HAZARDOUS WASTE TREATMENT PLANT
75. HAZARDOUS WASTE TREATMENT PLANT
76. HAZARDOUS WASTE TREATMENT PLANT
77. HAZARDOUS WASTE TREATMENT PLANT
78. HAZARDOUS WASTE TREATMENT PLANT
79. HAZARDOUS WASTE TREATMENT PLANT
80. HAZARDOUS WASTE TREATMENT PLANT
81. HAZARDOUS WASTE TREATMENT PLANT
82. HAZARDOUS WASTE TREATMENT PLANT
83. HAZARDOUS WASTE TREATMENT PLANT
84. HAZARDOUS WASTE TREATMENT PLANT
85. HAZARDOUS WASTE TREATMENT PLANT
86. HAZARDOUS WASTE TREATMENT PLANT
87. HAZARDOUS WASTE TREATMENT PLANT
88. HAZARDOUS WASTE TREATMENT PLANT
89. HAZARDOUS WASTE TREATMENT PLANT
90. HAZARDOUS WASTE TREATMENT PLANT
91. HAZARDOUS WASTE TREATMENT PLANT
92. HAZARDOUS WASTE TREATMENT PLANT
93. HAZARDOUS WASTE TREATMENT PLANT
94. HAZARDOUS WASTE TREATMENT PLANT
95. HAZARDOUS WASTE TREATMENT PLANT
96. HAZARDOUS WASTE TREATMENT PLANT
97. HAZARDOUS WASTE TREATMENT PLANT
98. HAZARDOUS WASTE TREATMENT PLANT
99. HAZARDOUS WASTE TREATMENT PLANT
100. HAZARDOUS WASTE TREATMENT PLANT





SITE PAVING AND SIGNAGE PLAN
SCALE: 1" = 100'



100 # 100-22-104

5100 FT CAMPBELL BLVD
HOPKINSVILLE, KY 40404

HAFER

ALLIANCE



K&S

WBW



SITE KEY PLAN



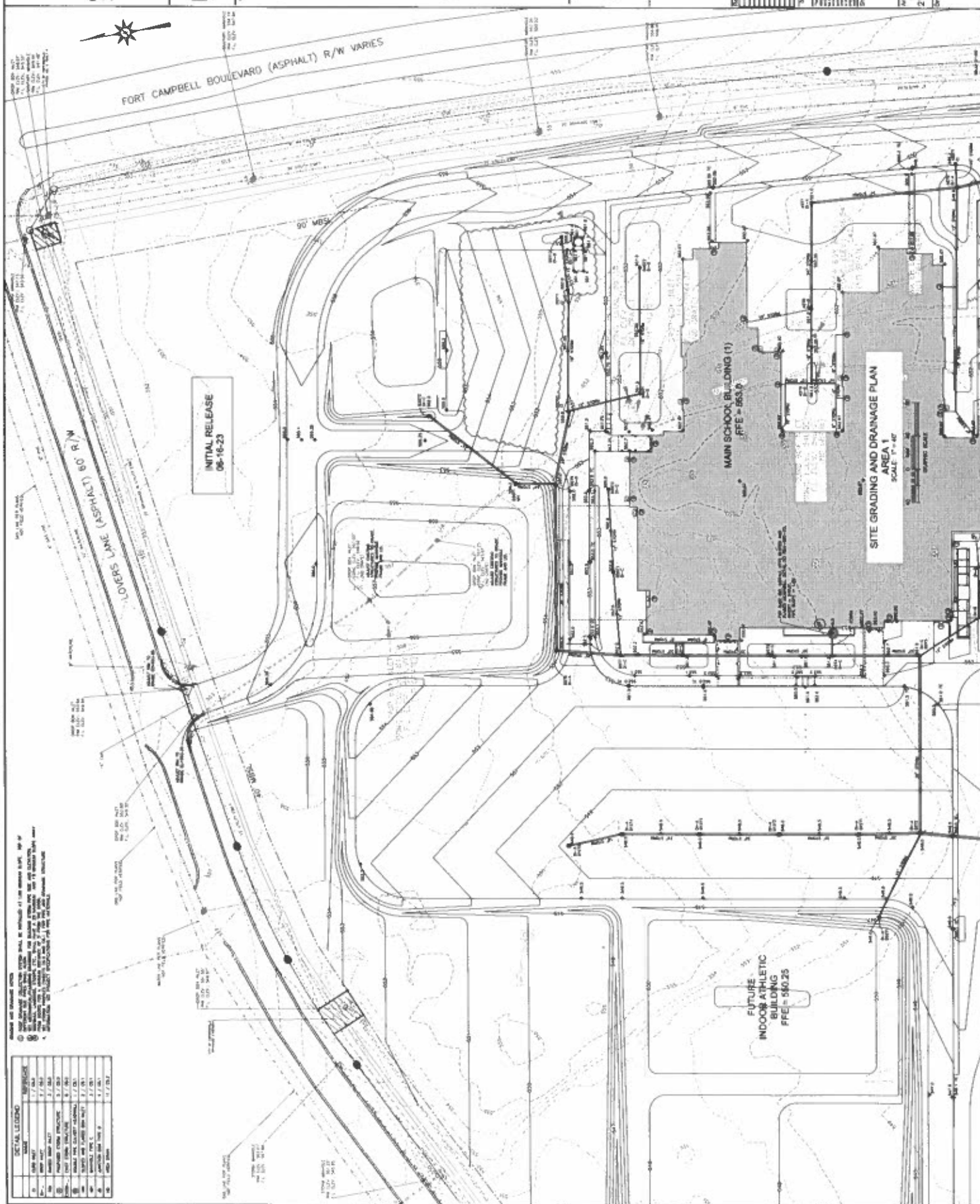
NO.	DATE	DESCRIPTION
1	1/1/20	PRELIMINARY
2	2/1/20	REVISED
3	3/1/20	REVISED
4	4/1/20	REVISED
5	5/1/20	REVISED
6	6/1/20	REVISED
7	7/1/20	REVISED
8	8/1/20	REVISED
9	9/1/20	REVISED
10	10/1/20	REVISED
11	11/1/20	REVISED
12	12/1/20	REVISED
13	1/1/21	REVISED
14	2/1/21	REVISED
15	3/1/21	REVISED
16	4/1/21	REVISED
17	5/1/21	REVISED
18	6/1/21	REVISED
19	7/1/21	REVISED
20	8/1/21	REVISED
21	9/1/21	REVISED
22	10/1/21	REVISED
23	11/1/21	REVISED
24	12/1/21	REVISED
25	1/1/22	REVISED
26	2/1/22	REVISED
27	3/1/22	REVISED
28	4/1/22	REVISED
29	5/1/22	REVISED
30	6/1/22	REVISED
31	7/1/22	REVISED
32	8/1/22	REVISED
33	9/1/22	REVISED
34	10/1/22	REVISED
35	11/1/22	REVISED
36	12/1/22	REVISED
37	1/1/23	REVISED
38	2/1/23	REVISED
39	3/1/23	REVISED
40	4/1/23	REVISED
41	5/1/23	REVISED
42	6/1/23	REVISED
43	7/1/23	REVISED
44	8/1/23	REVISED
45	9/1/23	REVISED
46	10/1/23	REVISED
47	11/1/23	REVISED
48	12/1/23	REVISED
49	1/1/24	REVISED
50	2/1/24	REVISED
51	3/1/24	REVISED
52	4/1/24	REVISED
53	5/1/24	REVISED
54	6/1/24	REVISED
55	7/1/24	REVISED
56	8/1/24	REVISED
57	9/1/24	REVISED
58	10/1/24	REVISED
59	11/1/24	REVISED
60	12/1/24	REVISED
61	1/1/25	REVISED
62	2/1/25	REVISED
63	3/1/25	REVISED
64	4/1/25	REVISED
65	5/1/25	REVISED
66	6/1/25	REVISED
67	7/1/25	REVISED
68	8/1/25	REVISED
69	9/1/25	REVISED
70	10/1/25	REVISED
71	11/1/25	REVISED
72	12/1/25	REVISED
73	1/1/26	REVISED
74	2/1/26	REVISED
75	3/1/26	REVISED
76	4/1/26	REVISED
77	5/1/26	REVISED
78	6/1/26	REVISED
79	7/1/26	REVISED
80	8/1/26	REVISED
81	9/1/26	REVISED
82	10/1/26	REVISED
83	11/1/26	REVISED
84	12/1/26	REVISED
85	1/1/27	REVISED
86	2/1/27	REVISED
87	3/1/27	REVISED
88	4/1/27	REVISED
89	5/1/27	REVISED
90	6/1/27	REVISED
91	7/1/27	REVISED
92	8/1/27	REVISED
93	9/1/27	REVISED
94	10/1/27	REVISED
95	11/1/27	REVISED
96	12/1/27	REVISED
97	1/1/28	REVISED
98	2/1/28	REVISED
99	3/1/28	REVISED
100	4/1/28	REVISED
101	5/1/28	REVISED
102	6/1/28	REVISED
103	7/1/28	REVISED
104	8/1/28	REVISED
105	9/1/28	REVISED
106	10/1/28	REVISED
107	11/1/28	REVISED
108	12/1/28	REVISED
109	1/1/29	REVISED
110	2/1/29	REVISED
111	3/1/29	REVISED
112	4/1/29	REVISED
113	5/1/29	REVISED
114	6/1/29	REVISED
115	7/1/29	REVISED
116	8/1/29	REVISED
117	9/1/29	REVISED
118	10/1/29	REVISED
119	11/1/29	REVISED
120	12/1/29	REVISED
121	1/1/30	REVISED
122	2/1/30	REVISED
123	3/1/30	REVISED
124	4/1/30	REVISED
125	5/1/30	REVISED
126	6/1/30	REVISED
127	7/1/30	REVISED
128	8/1/30	REVISED
129	9/1/30	REVISED
130	10/1/30	REVISED
131	11/1/30	REVISED
132	12/1/30	REVISED
133	1/1/31	REVISED
134	2/1/31	REVISED
135	3/1/31	REVISED
136	4/1/31	REVISED
137	5/1/31	REVISED
138	6/1/31	REVISED
139	7/1/31	REVISED
140	8/1/31	REVISED
141	9/1/31	REVISED
142	10/1/31	REVISED
143	11/1/31	REVISED
144	12/1/31	REVISED
145	1/1/32	REVISED
146	2/1/32	REVISED
147	3/1/32	REVISED
148	4/1/32	REVISED
149	5/1/32	REVISED
150	6/1/32	REVISED
151	7/1/32	REVISED
152	8/1/32	REVISED
153	9/1/32	REVISED
154	10/1/32	REVISED
155	11/1/32	REVISED
156	12/1/32	REVISED
157	1/1/33	REVISED
158	2/1/33	REVISED
159	3/1/33	REVISED
160	4/1/33	REVISED
161	5/1/33	REVISED
162	6/1/33	REVISED
163	7/1/33	REVISED
164	8/1/33	REVISED
165	9/1/33	REVISED
166	10/1/33	REVISED
167	11/1/33	REVISED
168	12/1/33	REVISED
169	1/1/34	REVISED
170	2/1/34	REVISED
171	3/1/34	REVISED
172	4/1/34	REVISED
173	5/1/34	REVISED
174	6/1/34	REVISED
175	7/1/34	REVISED
176	8/1/34	REVISED
177	9/1/34	REVISED
178	10/1/34	REVISED
179	11/1/34	REVISED
180	12/1/34	REVISED
181	1/1/35	REVISED
182	2/1/35	REVISED
183	3/1/35	REVISED
184	4/1/35	REVISED
185	5/1/35	REVISED
186	6/1/35	REVISED
187	7/1/35	REVISED
188	8/1/35	REVISED
189	9/1/35	REVISED
190	10/1/35	REVISED
191	11/1/35	REVISED
192	12/1/35	REVISED
193	1/1/36	REVISED
194	2/1/36	REVISED
195	3/1/36	REVISED
196	4/1/36	REVISED
197	5/1/36	REVISED
198	6/1/36	REVISED
199	7/1/36	REVISED
200	8/1/36	REVISED
201	9/1/36	REVISED
202	10/1/36	REVISED
203	11/1/36	REVISED
204	12/1/36	REVISED
205	1/1/37	REVISED
206	2/1/37	REVISED
207	3/1/37	REVISED
208	4/1/37	REVISED
209	5/1/37	REVISED
210	6/1/37	REVISED
211	7/1/37	REVISED
212	8/1/37	REVISED
213	9/1/37	REVISED
214	10/1/37	REVISED
215	11/1/37	REVISED
216	12/1/37	REVISED
217	1/1/38	REVISED
218	2/1/38	REVISED
219	3/1/38	REVISED
220	4/1/38	REVISED
221	5/1/38	REVISED
222	6/1/38	REVISED
223	7/1/38	REVISED
224	8/1/38	REVISED
225	9/1/38	REVISED
226	10/1/38	REVISED
227	11/1/38	REVISED
228	12/1/38	REVISED
229	1/1/39	REVISED
230	2/1/39	REVISED
231	3/1/39	REVISED
232	4/1/39	REVISED
233	5/1/39	REVISED
234	6/1/39	REVISED
235	7/1/39	REVISED
236	8/1/39	REVISED
237	9/1/39	REVISED
238	10/1/39	REVISED
239	11/1/39	REVISED
240	12/1/39	REVISED
241	1/1/40	REVISED
242	2/1/40	REVISED
243	3/1/40	REVISED
244	4/1/40	REVISED
245	5/1/40	REVISED
246	6/1/40	REVISED
247	7/1/40	REVISED
248	8/1/40	REVISED
249	9/1/40	REVISED
250	10/1/40	REVISED
251	11/1/40	REVISED
252	12/1/40	REVISED
253	1/1/41	REVISED
254	2/1/41	REVISED
255	3/1/41	REVISED
256	4/1/41	REVISED
257	5/1/41	REVISED
258	6/1/41	REVISED
259	7/1/41	REVISED
260	8/1/41	REVISED
261	9/1/41	REVISED
262	10/1/41	REVISED
263	11/1/41	REVISED
264	12/1/41	REVISED
265	1/1/42	REVISED
266	2/1/42	REVISED
267	3/1/42	REVISED
268	4/1/42	REVISED
269	5/1/42	REVISED
270	6/1/42	REVISED
271	7/1/42	REVISED
272	8/1/42	REVISED
273	9/1/42	REVISED
274	10/1/42	REVISED
275	11/1/42	REVISED
276	12/1/42	REVISED
277	1/1/43	REVISED
278	2/1/43	REVISED
279	3/1/43	REVISED
280	4/1/43	REVISED
281	5/1/43	REVISED
282	6/1/43	REVISED
283	7/1/43	REVISED
284	8/1/43	REVISED
285	9/1/43	REVISED
286	10/1/43	REVISED
287	11/1/43	REVISED
288	12/1/43	REVISED
289	1/1/44	REVISED
290	2/1/44	REVISED
291	3/1/44	REVISED
292	4/1/44	REVISED
293	5/1/44	REVISED
294	6/1/44	REVISED
295	7/1/44	REVISED
296	8/1/44	REVISED
297	9/1/44	REVISED
298	10/1/44	REVISED
299	11/1/44	REVISED
300	12/1/44	REVISED
301	1/1/45	REVISED
302	2/1/45	REVISED
303	3/1/45	REVISED
304	4/1/45	REVISED
305	5/1/45	REVISED
306	6/1/45	REVISED
307	7/1/45	REVISED
308	8/1/45	REVISED
309	9/1/45	REVISED
310	10/1/45	REVISED
311	11/1/45	REVISED
312	12/1/45	REVISED
313	1/1/46	REVISED
314	2/1/46	REVISED
315	3/1/46	REVISED
316	4/1/46	REVISED
317	5/1/46	REVISED
318	6/1/46	REVISED
319	7/1/46	REVISED
320	8/1/46	REVISED
321	9/1/46	REVISED
322	10/1/46	REVISED
323	11/1/46	REVISED
324	12/1/46	REVISED
325	1/1/47	REVISED
326	2/1/47	REVISED
327		

The drawings, specifications and other documents, including those of the contractor, shall be the property of the Engineer. They shall be used only for the purpose for which they are issued and shall not be used for any other purpose without the written consent of the Engineer. The contractor shall be responsible for the safekeeping of the drawings and specifications and shall return them to the Engineer when they are no longer needed. The contractor shall also be responsible for the payment of any fees or charges for the use of the drawings and specifications.

IN WITNESS WHEREOF, the Engineer has hereunto set his hand and the seal of the office of the Engineer, at the City of New York, this 1st day of January, 1920.

Engineer
City of New York

By _____
Deputy Engineer



**Christian County High School
PROPOSAL REQUEST PRICING SHEET
ALLIANCE JOB #22-033**

PROPOSED CHANGE REQUEST NO. 49 DATE 8/11/2025

DESCRIPTION North Dumpster Enclosure

CONTRACTOR Stewart Richey Structural Steel BID PKG. 50

WORK DESCRIPTION 4 Bollards, 2 Gate Posts, 2 Dumpster Gates

A. UNIT PRICING FROM FORM OF PROPOSAL

1. UNIT PRICING	<u> </u>	QTY.	<u> </u>	U.P.	<u> </u>	\$ -	TOTAL COST
2. UNIT PRICING	<u> </u>	QTY.	<u> </u>	U.P.	<u> </u>	\$ -	TOTAL COST
3. UNIT PRICING	<u> </u>	QTY.	<u> </u>	U.P.	<u> </u>	\$ -	TOTAL COST

B. MATERIAL

1. <u>Bollards</u>	ITEM	<u> </u>	QTY.	<u> </u>	UNIT	<u> </u>	\$ 1,000.00
2. <u>Tube</u>	ITEM	<u> </u>	QTY.	<u> </u>	UNIT	<u> </u>	\$ 1,420.00
3. <u>Cane Bolts / Latch</u>	ITEM	<u> </u>	QTY.	<u> </u>	UNIT	<u> </u>	\$ 250.00
MATERIAL TOTAL						<u> </u>	\$ 2,670.00

LABOR

1. <u>Fabricate and deliver</u>	HOURS @	<u> </u>	<u> </u>	\$/HR	<u> </u>	\$ 2,150.00	
2. <u>Install</u>	HOURS @	<u> </u>	<u> </u>	\$/HR	<u> </u>	\$ 1,080.00	
3. <u>Detailing</u>	HOURS @	<u> </u>	<u> </u>	\$/HR	<u> </u>	\$ 300.00	
LABOR TOTAL						<u> </u>	\$ 3,530.00

EQUIPMENT

EQUIPMENT TOTAL \$ 425.00

MATERIAL, LABOR & EQUIPMENT SUBTOTAL \$ 6,625.00

15% OVERHEAD/PROFIT MARK-UP \$ 993.75

DEDUCT DPO (DIRECT PURCHASE ORDER) MATERIAL \$

TOTAL ADD/DEDUCT \$ 7,619.00

NOTE: CONTRACTORS ARE TO USE UNIT PRICES WHERE APPLICABLE.

FACPAC Contract Change Order

Supplemental Information Form (Ref# 63109)

Form Status: Saved

Tier 1 Project: Consolidated High School

BG Number: 22-104

Status: Active

District: Christian County (HB678) (115)

Phase: Project Initiation (View Checklist)

Contract: Stewart Richey Construction, Inc. - Steel , 0050, Structural & Miscellaneous Steel

Type: CM Bid Package

Proposed

Change Order Number	2
Time Extension Required	No
Date Of Change Order	8/27/2025
Change Order Amount To Date	Increase

Construction Contingency

Calculations below are project wide. Remaining negative Construction Contingency may require the submission of a revised BG1.

Current Approved Amount	\$6,320,436.60
Net Approved COs	\$1,043,518.80
Remaining After Approved COs	\$5,276,917.80
Net All COs	\$991,974.29
Remaining After All COs	\$5,328,462.31

This Requested Change Order Amount \$7,619.00

+/-

Change In A/E Fee This Change Order

+/-

Change In CM Fee This Change Order \$0.00

+/-

Remaining Construction Contingency \$5,328,462.31

Balance

Contract Change Requested By Local Board of Education

Contract Change Reason Code Expansion of Scope

Change Order Description And Justification

Cost associated with bollards and gates with North Dumpster Enclosure per PR #49.

Cost Benefit To Owner

The cost of this change order has been reviewed and determined to be reasonable.

Contract unit prices have been utilized No
to support the cost associated with this
change order.

Detailed Cost Breakdown

Contract unit prices have not been utilized, provide a detailed cost breakdown which separates labor, material, profit and overhead.

Detail Item	Amount	Percent of Total
Labor	\$3,530.25	46.33%
Materials	\$2,670.00	35.04%
Profit and Overhead	\$425.00	5.58%
Bond Insurance	\$993.75	13.04%
Cost Breakdown Total:	\$7,619.00	

Cost for this Change Order supported by an alternate bid or competitive price quote

Explain Why

Executed contract with contractor.

Change Order Supplemental Information Form Signature Page (Online Form Ref# 63109)

Architect

Date

Construction Manager

Date

Finance Officer

Date

Local Board of Education Designee

Date