



AIA Document G731™ – 2019

Change Order, Construction Manager as Adviser Edition

PROJECT: (name and address)

Christian County High School
5185 Fort Campbell Blvd
Hopkinsville, KY 42240

OWNER: (name and address)

Christian County Board of Education
200 Glass Avenue Hopkinsville, KY 42240

CONTRACTOR: (name and address)

A & K Construction
100 Calloway Court Paducah, KY 42001

CONTRACT INFORMATION:

Contract For: BP 031-04 Concrete
Date: September 08, 2023

CHANGE ORDER INFORMATION:

Change Order Number: 084
Date: August 27, 2025

ARCHITECT: (name and address)

Hafer PSC
101 E. Second Street, Suite 101 Owensboro, KY 42303

CONSTRUCTION MANAGER: (name and address)

Alliance Corporation
116 E. College Street Glasgow, KY 42141

THE CONTRACT IS CHANGED AS FOLLOWS:

(Insert a detailed description of the change and, if applicable, attach or reference specific exhibits. Also include agreed upon adjustments attributable to executed Construction Change Directives.)

Cost associated with additional concrete with North Dumpster Enclosure per PR #49.

The original Contract Sum was	\$ 8,233,057.00
Net change by previously authorized Change Orders	\$ (49,267.62)
The Contract Sum prior to this Change Order was	\$ 8,183,789.38
The Contract Sum will be increased by this Change Order in the amount of	\$ 9,548.13
The new Contract Sum including this Change Order will be	\$ 8,193,337.51

The Contract time will be unchanged by (0) days.

The Contractor's Work shall be substantially complete on .

NOTE: This Change Order does not include adjustments to the Contract Sum or Guaranteed Maximum Price, or the Contract Time, that have been authorized by Construction Change Directive until the cost and time have been agreed upon by both the Owner and Contractor, in which case a Change Order is executed to supersede the Construction Change Directive.

NOT VALID UNTIL SIGNED BY THE ARCHITECT, CONSTRUCTION MANAGER, CONTRACTOR, AND OWNER.

ARCHITECT (Signature)

BY: Eric Rang, Hafer PSC

(Printed name, title, and license number if required)

Date

CONSTRUCTION MANAGER (Signature)

BY: Kevin Hitchel, Alliance Corporation

(Printed name and title)

Date

CONTRACTOR (Signature)

BY: Zach Witbart, A & K Construction, Inc.

(Printed name and title)

Date

OWNER (Signature)

BY: Christopher Bentzel, Christian County Board of Education

(Printed name and title)

Date



PROPOSED CHANGE ORDER

PROJECT Christian County High School

CONTRACTOR/SUPPLIER A&K Construction

BID PACKAGE 031 84.) 031 - 04

DETAIL ITEM **AMOUNT**

LABOR	\$	5,638.72
MATERIALS	\$	2,014.00
EQUIPMENT	\$	650.00
OVERHEAD & PROFIT	\$	1,245.41
COST BREAKDOWN TOTAL	\$	9,548.13

DESCRIPTION

Additional concrete associated with North Dumpster Enclosure per PR #49

PR # _____ **(ATTACH PR)**

CHANGE ORDER INITIATED BY:

ARCHITECT/ENGINEER

☒ OWNER

CONTRACTOR

CM

CODE OFFICIAL

OTHER _____

PLEASE INCLUDE THIS FORM WITH EVERY
CHANGE ORDER.

PROPOSAL REQUEST

Project:	Christian County High School 5185 Ft. Campbell Blvd Hopkinsville, KY 42240	PR No.:	049
		Date:	July 10, 2025
Owner:	Christian County Public Schools 222 Glass Ave Hopkinsville, KY 42240	Project Number:	2106-204
		Contract for:	Mason, General, Civil, Steel
To:	Kevin Hitchell Alliance Corporation 116 E. College Steet Glasgow, KY 42141		
RE:	North Dumpster Enclsoure		

Please submit an itemized quotation for changes in the Contract Sum and/or Time incidental to proposed modifications to the Contract Documents described herein.
THIS IS NOT A CHANGE ORDER NOR A DIRECTION TO PROCEED WITH THE WORK DESCRIBED HEREIN.

Description:

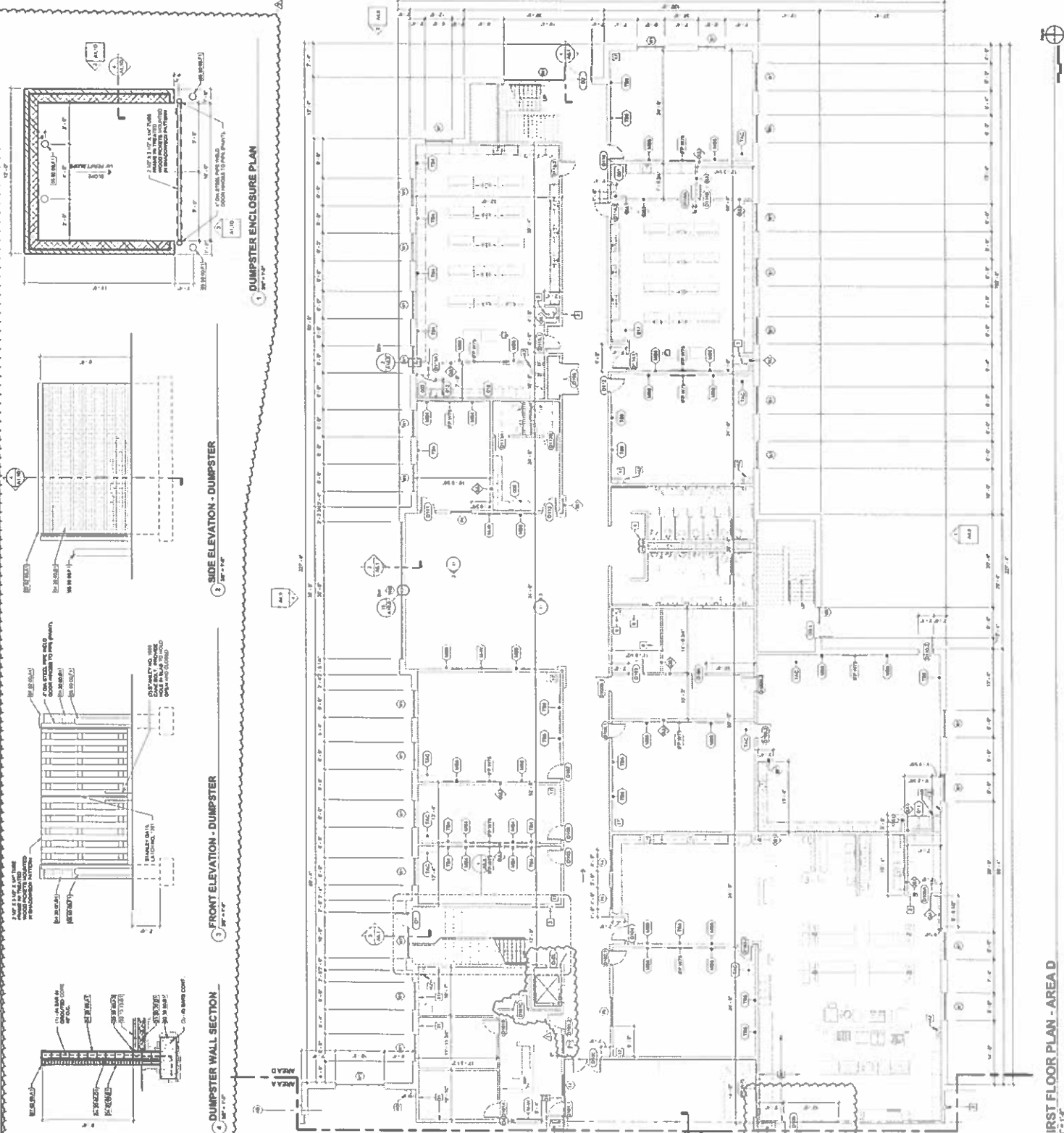
1. Provide a price to construct dumpster enclosure as shown on A1.1D, and modify parking lot surface to provide concrete pad as shown on attached civil drawings.

Attachments: A1.1D, C3.01, C3.1, C4.1

By: Eric Rang, Rick Harper

CC: Steve Harding, Jason Wilson

- GENERAL FLOOR PLAN NOTES:**
1. REFER TO GENERAL NOTES FOR ALL NOTES.
 2. REFER TO GENERAL NOTES FOR ALL NOTES.
 3. REFER TO GENERAL NOTES FOR ALL NOTES.
 4. REFER TO GENERAL NOTES FOR ALL NOTES.
 5. REFER TO GENERAL NOTES FOR ALL NOTES.
 6. REFER TO GENERAL NOTES FOR ALL NOTES.
 7. REFER TO GENERAL NOTES FOR ALL NOTES.
 8. REFER TO GENERAL NOTES FOR ALL NOTES.
 9. REFER TO GENERAL NOTES FOR ALL NOTES.
 10. REFER TO GENERAL NOTES FOR ALL NOTES.
 11. REFER TO GENERAL NOTES FOR ALL NOTES.
 12. REFER TO GENERAL NOTES FOR ALL NOTES.
 13. REFER TO GENERAL NOTES FOR ALL NOTES.
 14. REFER TO GENERAL NOTES FOR ALL NOTES.
 15. REFER TO GENERAL NOTES FOR ALL NOTES.
 16. REFER TO GENERAL NOTES FOR ALL NOTES.
 17. REFER TO GENERAL NOTES FOR ALL NOTES.
 18. REFER TO GENERAL NOTES FOR ALL NOTES.
 19. REFER TO GENERAL NOTES FOR ALL NOTES.
 20. REFER TO GENERAL NOTES FOR ALL NOTES.
 21. REFER TO GENERAL NOTES FOR ALL NOTES.
 22. REFER TO GENERAL NOTES FOR ALL NOTES.
 23. REFER TO GENERAL NOTES FOR ALL NOTES.
 24. REFER TO GENERAL NOTES FOR ALL NOTES.
 25. REFER TO GENERAL NOTES FOR ALL NOTES.
 26. REFER TO GENERAL NOTES FOR ALL NOTES.
 27. REFER TO GENERAL NOTES FOR ALL NOTES.
 28. REFER TO GENERAL NOTES FOR ALL NOTES.
 29. REFER TO GENERAL NOTES FOR ALL NOTES.
 30. REFER TO GENERAL NOTES FOR ALL NOTES.
 31. REFER TO GENERAL NOTES FOR ALL NOTES.
 32. REFER TO GENERAL NOTES FOR ALL NOTES.
 33. REFER TO GENERAL NOTES FOR ALL NOTES.
 34. REFER TO GENERAL NOTES FOR ALL NOTES.
 35. REFER TO GENERAL NOTES FOR ALL NOTES.
 36. REFER TO GENERAL NOTES FOR ALL NOTES.
 37. REFER TO GENERAL NOTES FOR ALL NOTES.
 38. REFER TO GENERAL NOTES FOR ALL NOTES.
 39. REFER TO GENERAL NOTES FOR ALL NOTES.
 40. REFER TO GENERAL NOTES FOR ALL NOTES.
 41. REFER TO GENERAL NOTES FOR ALL NOTES.
 42. REFER TO GENERAL NOTES FOR ALL NOTES.
 43. REFER TO GENERAL NOTES FOR ALL NOTES.
 44. REFER TO GENERAL NOTES FOR ALL NOTES.
 45. REFER TO GENERAL NOTES FOR ALL NOTES.
 46. REFER TO GENERAL NOTES FOR ALL NOTES.
 47. REFER TO GENERAL NOTES FOR ALL NOTES.
 48. REFER TO GENERAL NOTES FOR ALL NOTES.
 49. REFER TO GENERAL NOTES FOR ALL NOTES.
 50. REFER TO GENERAL NOTES FOR ALL NOTES.
 51. REFER TO GENERAL NOTES FOR ALL NOTES.
 52. REFER TO GENERAL NOTES FOR ALL NOTES.
 53. REFER TO GENERAL NOTES FOR ALL NOTES.
 54. REFER TO GENERAL NOTES FOR ALL NOTES.
 55. REFER TO GENERAL NOTES FOR ALL NOTES.
 56. REFER TO GENERAL NOTES FOR ALL NOTES.
 57. REFER TO GENERAL NOTES FOR ALL NOTES.
 58. REFER TO GENERAL NOTES FOR ALL NOTES.
 59. REFER TO GENERAL NOTES FOR ALL NOTES.
 60. REFER TO GENERAL NOTES FOR ALL NOTES.
 61. REFER TO GENERAL NOTES FOR ALL NOTES.
 62. REFER TO GENERAL NOTES FOR ALL NOTES.
 63. REFER TO GENERAL NOTES FOR ALL NOTES.
 64. REFER TO GENERAL NOTES FOR ALL NOTES.
 65. REFER TO GENERAL NOTES FOR ALL NOTES.
 66. REFER TO GENERAL NOTES FOR ALL NOTES.
 67. REFER TO GENERAL NOTES FOR ALL NOTES.
 68. REFER TO GENERAL NOTES FOR ALL NOTES.
 69. REFER TO GENERAL NOTES FOR ALL NOTES.
 70. REFER TO GENERAL NOTES FOR ALL NOTES.
 71. REFER TO GENERAL NOTES FOR ALL NOTES.
 72. REFER TO GENERAL NOTES FOR ALL NOTES.
 73. REFER TO GENERAL NOTES FOR ALL NOTES.
 74. REFER TO GENERAL NOTES FOR ALL NOTES.
 75. REFER TO GENERAL NOTES FOR ALL NOTES.
 76. REFER TO GENERAL NOTES FOR ALL NOTES.
 77. REFER TO GENERAL NOTES FOR ALL NOTES.
 78. REFER TO GENERAL NOTES FOR ALL NOTES.
 79. REFER TO GENERAL NOTES FOR ALL NOTES.
 80. REFER TO GENERAL NOTES FOR ALL NOTES.
 81. REFER TO GENERAL NOTES FOR ALL NOTES.
 82. REFER TO GENERAL NOTES FOR ALL NOTES.
 83. REFER TO GENERAL NOTES FOR ALL NOTES.
 84. REFER TO GENERAL NOTES FOR ALL NOTES.
 85. REFER TO GENERAL NOTES FOR ALL NOTES.
 86. REFER TO GENERAL NOTES FOR ALL NOTES.
 87. REFER TO GENERAL NOTES FOR ALL NOTES.
 88. REFER TO GENERAL NOTES FOR ALL NOTES.
 89. REFER TO GENERAL NOTES FOR ALL NOTES.
 90. REFER TO GENERAL NOTES FOR ALL NOTES.
 91. REFER TO GENERAL NOTES FOR ALL NOTES.
 92. REFER TO GENERAL NOTES FOR ALL NOTES.
 93. REFER TO GENERAL NOTES FOR ALL NOTES.
 94. REFER TO GENERAL NOTES FOR ALL NOTES.
 95. REFER TO GENERAL NOTES FOR ALL NOTES.
 96. REFER TO GENERAL NOTES FOR ALL NOTES.
 97. REFER TO GENERAL NOTES FOR ALL NOTES.
 98. REFER TO GENERAL NOTES FOR ALL NOTES.
 99. REFER TO GENERAL NOTES FOR ALL NOTES.
 100. REFER TO GENERAL NOTES FOR ALL NOTES.



FIRST FLOOR PLAN - AREA D



1028 S. 222.104

1815 F. CAMPBELL BLVD

HOPKINSVILLE, KY 40520

HAFER



SITE KEY PLAN



NO.	REVISION	DATE
1	ISSUED FOR PERMITTING	05/01/2021
2	REVISED FOR COMMENTS	05/01/2021
3	REVISED FOR COMMENTS	05/01/2021
4	REVISED FOR COMMENTS	05/01/2021
5	REVISED FOR COMMENTS	05/01/2021
6	REVISED FOR COMMENTS	05/01/2021
7	REVISED FOR COMMENTS	05/01/2021
8	REVISED FOR COMMENTS	05/01/2021
9	REVISED FOR COMMENTS	05/01/2021
10	REVISED FOR COMMENTS	05/01/2021

PAVING AND SIGNAGE PLAN

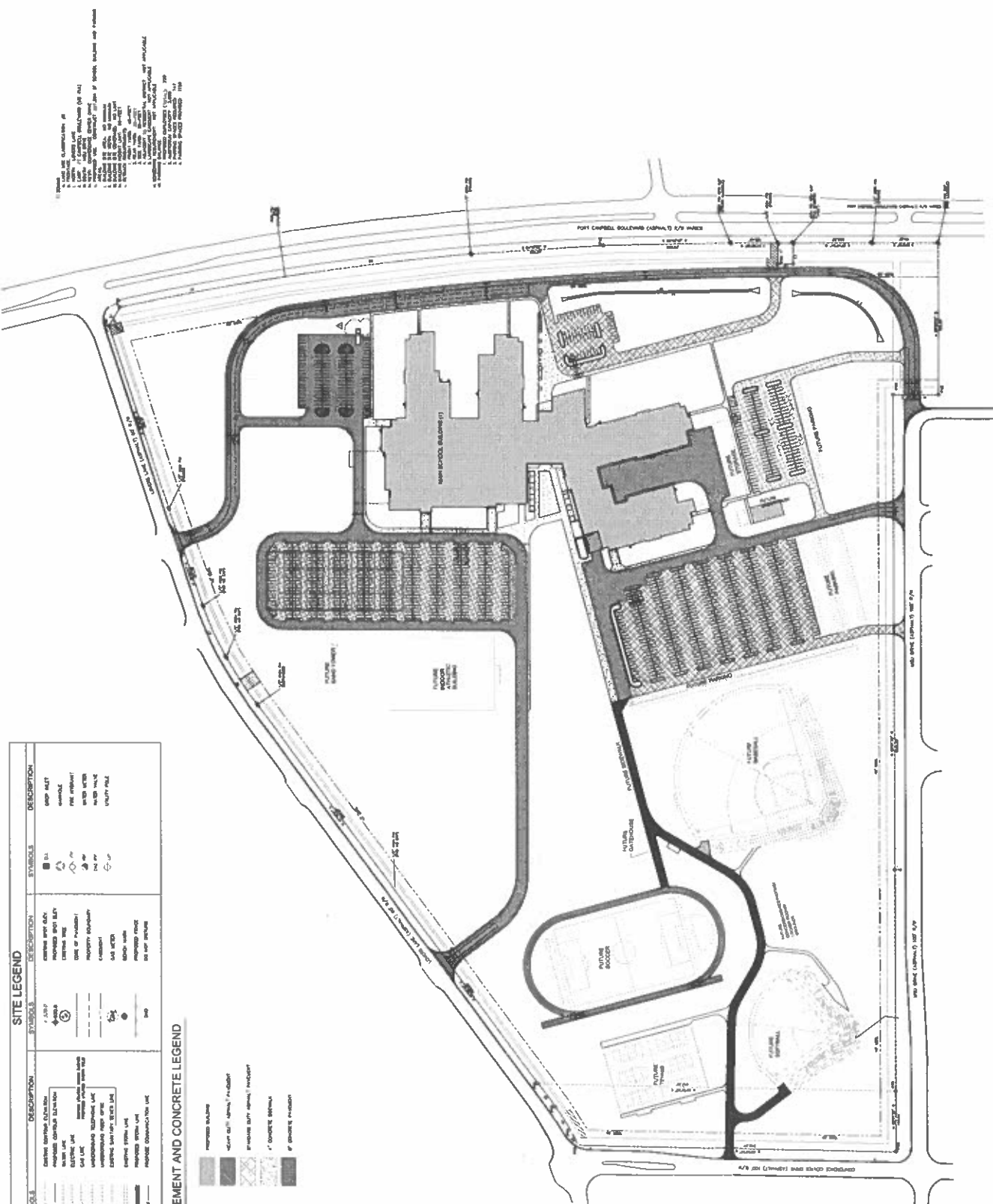
Project No. 2106-201

May, 2021

Drawing No. C3.01

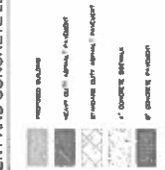
BELL # 731-002

SITE PAVING AND SIGNAGE PLAN
SCALE: 1" = 100'



SYMBOL	DESCRIPTION	SYMBOL	DESCRIPTION
1. 100'	100' SCALE	1. 100'	100' SCALE
2. 100'	100' SCALE	2. 100'	100' SCALE
3. 100'	100' SCALE	3. 100'	100' SCALE
4. 100'	100' SCALE	4. 100'	100' SCALE
5. 100'	100' SCALE	5. 100'	100' SCALE
6. 100'	100' SCALE	6. 100'	100' SCALE
7. 100'	100' SCALE	7. 100'	100' SCALE
8. 100'	100' SCALE	8. 100'	100' SCALE
9. 100'	100' SCALE	9. 100'	100' SCALE
10. 100'	100' SCALE	10. 100'	100' SCALE
11. 100'	100' SCALE	11. 100'	100' SCALE
12. 100'	100' SCALE	12. 100'	100' SCALE
13. 100'	100' SCALE	13. 100'	100' SCALE
14. 100'	100' SCALE	14. 100'	100' SCALE
15. 100'	100' SCALE	15. 100'	100' SCALE
16. 100'	100' SCALE	16. 100'	100' SCALE
17. 100'	100' SCALE	17. 100'	100' SCALE
18. 100'	100' SCALE	18. 100'	100' SCALE
19. 100'	100' SCALE	19. 100'	100' SCALE
20. 100'	100' SCALE	20. 100'	100' SCALE
21. 100'	100' SCALE	21. 100'	100' SCALE
22. 100'	100' SCALE	22. 100'	100' SCALE
23. 100'	100' SCALE	23. 100'	100' SCALE
24. 100'	100' SCALE	24. 100'	100' SCALE
25. 100'	100' SCALE	25. 100'	100' SCALE
26. 100'	100' SCALE	26. 100'	100' SCALE
27. 100'	100' SCALE	27. 100'	100' SCALE
28. 100'	100' SCALE	28. 100'	100' SCALE
29. 100'	100' SCALE	29. 100'	100' SCALE
30. 100'	100' SCALE	30. 100'	100' SCALE
31. 100'	100' SCALE	31. 100'	100' SCALE
32. 100'	100' SCALE	32. 100'	100' SCALE
33. 100'	100' SCALE	33. 100'	100' SCALE
34. 100'	100' SCALE	34. 100'	100' SCALE
35. 100'	100' SCALE	35. 100'	100' SCALE
36. 100'	100' SCALE	36. 100'	100' SCALE
37. 100'	100' SCALE	37. 100'	100' SCALE
38. 100'	100' SCALE	38. 100'	100' SCALE
39. 100'	100' SCALE	39. 100'	100' SCALE
40. 100'	100' SCALE	40. 100'	100' SCALE
41. 100'	100' SCALE	41. 100'	100' SCALE
42. 100'	100' SCALE	42. 100'	100' SCALE
43. 100'	100' SCALE	43. 100'	100' SCALE
44. 100'	100' SCALE	44. 100'	100' SCALE
45. 100'	100' SCALE	45. 100'	100' SCALE
46. 100'	100' SCALE	46. 100'	100' SCALE
47. 100'	100' SCALE	47. 100'	100' SCALE
48. 100'	100' SCALE	48. 100'	100' SCALE
49. 100'	100' SCALE	49. 100'	100' SCALE
50. 100'	100' SCALE	50. 100'	100' SCALE
51. 100'	100' SCALE	51. 100'	100' SCALE
52. 100'	100' SCALE	52. 100'	100' SCALE
53. 100'	100' SCALE	53. 100'	100' SCALE
54. 100'	100' SCALE	54. 100'	100' SCALE
55. 100'	100' SCALE	55. 100'	100' SCALE
56. 100'	100' SCALE	56. 100'	100' SCALE
57. 100'	100' SCALE	57. 100'	100' SCALE
58. 100'	100' SCALE	58. 100'	100' SCALE
59. 100'	100' SCALE	59. 100'	100' SCALE
60. 100'	100' SCALE	60. 100'	100' SCALE
61. 100'	100' SCALE	61. 100'	100' SCALE
62. 100'	100' SCALE	62. 100'	100' SCALE
63. 100'	100' SCALE	63. 100'	100' SCALE
64. 100'	100' SCALE	64. 100'	100' SCALE
65. 100'	100' SCALE	65. 100'	100' SCALE
66. 100'	100' SCALE	66. 100'	100' SCALE
67. 100'	100' SCALE	67. 100'	100' SCALE
68. 100'	100' SCALE	68. 100'	100' SCALE
69. 100'	100' SCALE	69. 100'	100' SCALE
70. 100'	100' SCALE	70. 100'	100' SCALE
71. 100'	100' SCALE	71. 100'	100' SCALE
72. 100'	100' SCALE	72. 100'	100' SCALE
73. 100'	100' SCALE	73. 100'	100' SCALE
74. 100'	100' SCALE	74. 100'	100' SCALE
75. 100'	100' SCALE	75. 100'	100' SCALE
76. 100'	100' SCALE	76. 100'	100' SCALE
77. 100'	100' SCALE	77. 100'	100' SCALE
78. 100'	100' SCALE	78. 100'	100' SCALE
79. 100'	100' SCALE	79. 100'	100' SCALE
80. 100'	100' SCALE	80. 100'	100' SCALE
81. 100'	100' SCALE	81. 100'	100' SCALE
82. 100'	100' SCALE	82. 100'	100' SCALE
83. 100'	100' SCALE	83. 100'	100' SCALE
84. 100'	100' SCALE	84. 100'	100' SCALE
85. 100'	100' SCALE	85. 100'	100' SCALE
86. 100'	100' SCALE	86. 100'	100' SCALE
87. 100'	100' SCALE	87. 100'	100' SCALE
88. 100'	100' SCALE	88. 100'	100' SCALE
89. 100'	100' SCALE	89. 100'	100' SCALE
90. 100'	100' SCALE	90. 100'	100' SCALE
91. 100'	100' SCALE	91. 100'	100' SCALE
92. 100'	100' SCALE	92. 100'	100' SCALE
93. 100'	100' SCALE	93. 100'	100' SCALE
94. 100'	100' SCALE	94. 100'	100' SCALE
95. 100'	100' SCALE	95. 100'	100' SCALE
96. 100'	100' SCALE	96. 100'	100' SCALE
97. 100'	100' SCALE	97. 100'	100' SCALE
98. 100'	100' SCALE	98. 100'	100' SCALE
99. 100'	100' SCALE	99. 100'	100' SCALE
100. 100'	100' SCALE	100. 100'	100' SCALE

PAVEMENT AND CONCRETE LEGEND





K06-A 80-22-104

1145 FT CAMPBELL BLVD
HOPKINSVILLE, KY 27003

HAFER



Site Key Plan



SITE KEY PLAN



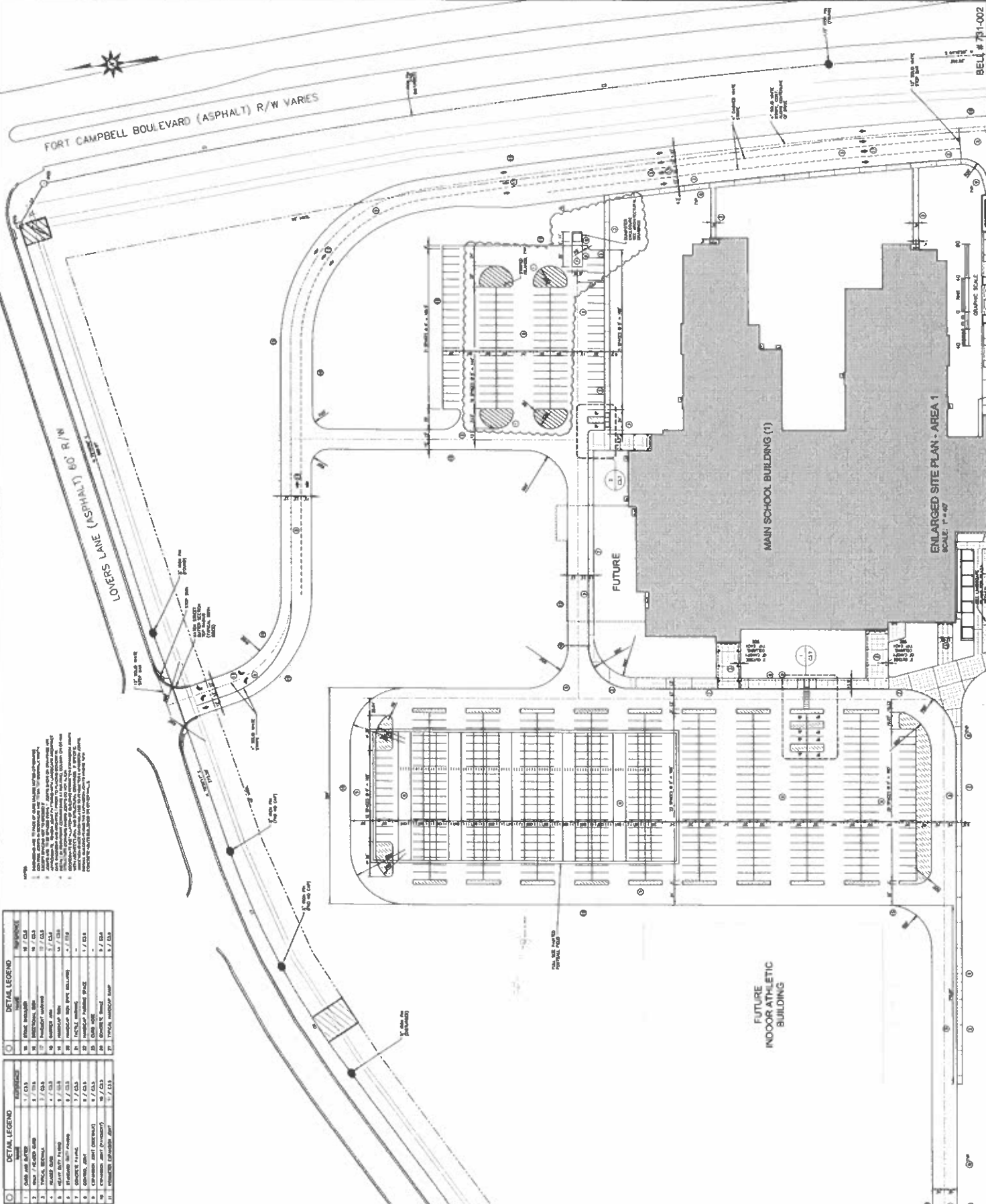
NO.	DESCRIPTION	DATE
1	PRELIMINARY	10/1/00
2	REVISED	10/1/00
3	REVISED	10/1/00
4	REVISED	10/1/00
5	REVISED	10/1/00
6	REVISED	10/1/00
7	REVISED	10/1/00
8	REVISED	10/1/00
9	REVISED	10/1/00
10	REVISED	10/1/00
11	REVISED	10/1/00
12	REVISED	10/1/00
13	REVISED	10/1/00
14	REVISED	10/1/00
15	REVISED	10/1/00
16	REVISED	10/1/00
17	REVISED	10/1/00
18	REVISED	10/1/00
19	REVISED	10/1/00
20	REVISED	10/1/00
21	REVISED	10/1/00
22	REVISED	10/1/00
23	REVISED	10/1/00
24	REVISED	10/1/00
25	REVISED	10/1/00
26	REVISED	10/1/00
27	REVISED	10/1/00
28	REVISED	10/1/00
29	REVISED	10/1/00
30	REVISED	10/1/00
31	REVISED	10/1/00
32	REVISED	10/1/00
33	REVISED	10/1/00
34	REVISED	10/1/00
35	REVISED	10/1/00
36	REVISED	10/1/00
37	REVISED	10/1/00
38	REVISED	10/1/00
39	REVISED	10/1/00
40	REVISED	10/1/00
41	REVISED	10/1/00
42	REVISED	10/1/00
43	REVISED	10/1/00
44	REVISED	10/1/00
45	REVISED	10/1/00
46	REVISED	10/1/00
47	REVISED	10/1/00
48	REVISED	10/1/00
49	REVISED	10/1/00
50	REVISED	10/1/00
51	REVISED	10/1/00
52	REVISED	10/1/00
53	REVISED	10/1/00
54	REVISED	10/1/00
55	REVISED	10/1/00
56	REVISED	10/1/00
57	REVISED	10/1/00
58	REVISED	10/1/00
59	REVISED	10/1/00
60	REVISED	10/1/00
61	REVISED	10/1/00
62	REVISED	10/1/00
63	REVISED	10/1/00
64	REVISED	10/1/00
65	REVISED	10/1/00
66	REVISED	10/1/00
67	REVISED	10/1/00
68	REVISED	10/1/00
69	REVISED	10/1/00
70	REVISED	10/1/00
71	REVISED	10/1/00
72	REVISED	10/1/00
73	REVISED	10/1/00
74	REVISED	10/1/00
75	REVISED	10/1/00
76	REVISED	10/1/00
77	REVISED	10/1/00
78	REVISED	10/1/00
79	REVISED	10/1/00
80	REVISED	10/1/00
81	REVISED	10/1/00
82	REVISED	10/1/00
83	REVISED	10/1/00
84	REVISED	10/1/00
85	REVISED	10/1/00
86	REVISED	10/1/00
87	REVISED	10/1/00
88	REVISED	10/1/00
89	REVISED	10/1/00
90	REVISED	10/1/00
91	REVISED	10/1/00
92	REVISED	10/1/00
93	REVISED	10/1/00
94	REVISED	10/1/00
95	REVISED	10/1/00
96	REVISED	10/1/00
97	REVISED	10/1/00
98	REVISED	10/1/00
99	REVISED	10/1/00
100	REVISED	10/1/00

ENLARGED SITE PLAN
AREA 1

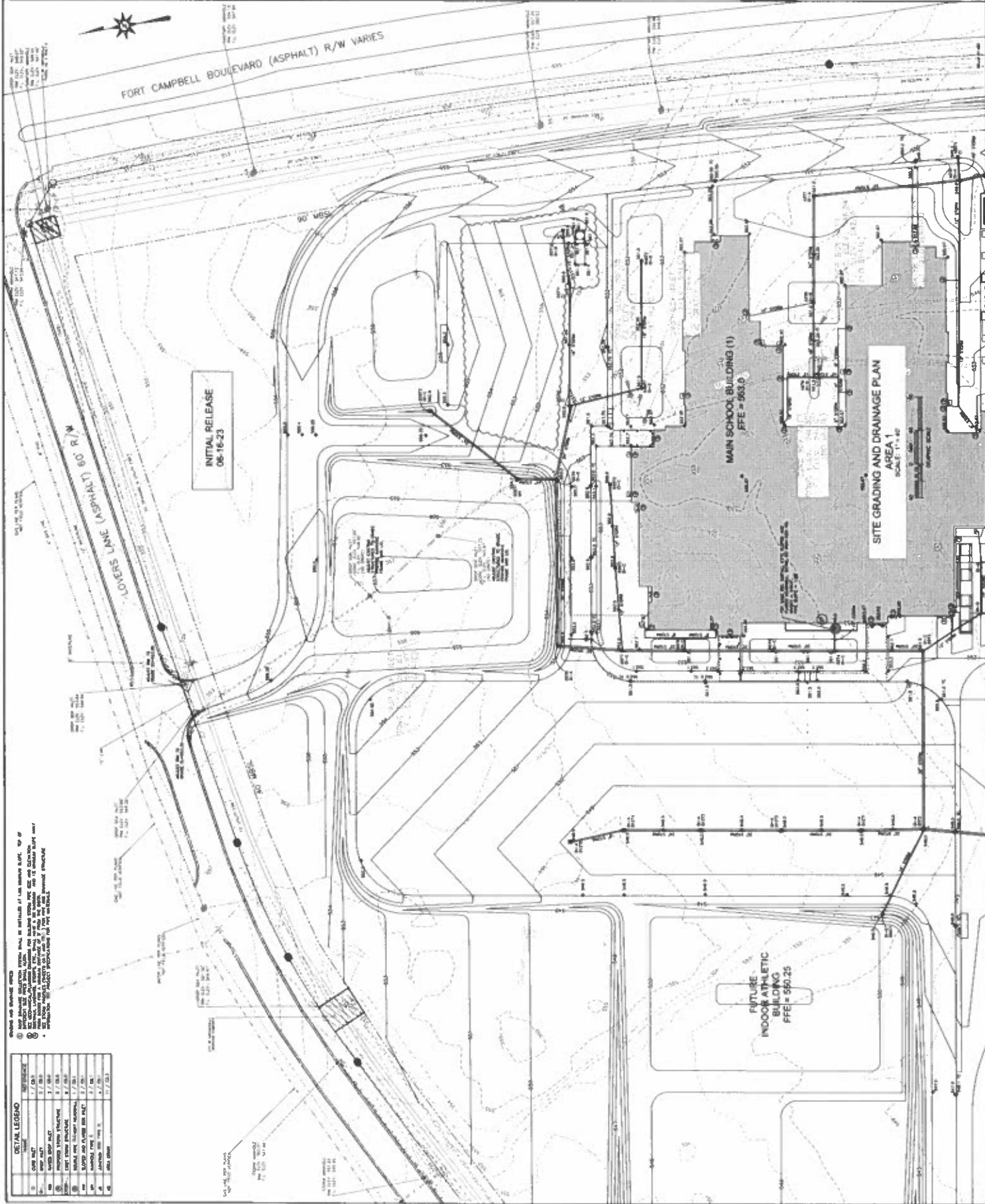
Architect's Project No.
2106-201
Date
May, 202

C3.1

751-002



NO.	DESCRIPTION	DATE
1	PRELIMINARY	10/1/00
2	REVISED	10/1/00
3	REVISED	10/1/00
4	REVISED	10/1/00
5	REVISED	10/1/00
6	REVISED	10/1/00
7	REVISED	10/1/00
8	REVISED	10/1/00
9	REVISED	10/1/00
10	REVISED	10/1/00
11	REVISED	10/1/00
12	REVISED	10/1/00
13	REVISED	10/1/00
14	REVISED	10/1/00
15	REVISED	10/1/00
16	REVISED	10/1/00
17	REVISED	10/1/00
18	REVISED	10/1/00
19	REVISED	10/1/00
20	REVISED	10/1/00
21	REVISED	10/1/00
22	REVISED	10/1/00
23	REVISED	10/1/00
24	REVISED	10/1/00
25	REVISED	10/1/00
26	REVISED	10/1/00
27	REVISED	10/1/00
28	REVISED	10/1/00
29	REVISED	10/1/00
30	REVISED	10/1/00
31	REVISED	10/1/00
32	REVISED	10/1/00
33	REVISED	10/1/00
34	REVISED	10/1/00
35	REVISED	10/1/00
36	REVISED	10/1/00
37	REVISED	10/1/00
38	REVISED	10/1/00
39	REVISED	10/1/00
40	REVISED	10/1/00
41	REVISED	10/1/00
42	REVISED	10/1/00
43	REVISED	10/1/00
44	REVISED	10/1/00
45	REVISED	10/1/00
46	REVISED	10/1/00
47	REVISED	10/1/00
48	REVISED	10/1/00
49	REVISED	10/1/00
50	REVISED	10/1/00
51	REVISED	10/1/00
52	REVISED	10/1/00
53	REVISED	10/1/00
54	REVISED	10/1/00
55	REVISED	10/1/00
56	REVISED	10/1/00
57	REVISED	10/1/00
58	REVISED	10/1/00
59	REVISED	10/1/00
60	REVISED	10/1/00
61	REVISED	10/1/00
62	REVISED	10/1/00
63	REVISED	10/1/00
64	REVISED	10/1/00
65	REVISED	10/1/00
66	REVISED	10/1/00
67	REVISED	10/1/00
68	REVISED	10/1/00
69	REVISED	10/1/00
70	REVISED	10/1/00
71	REVISED	10/1/00
72	REVISED	10/1/00
73	REVISED	10/1/00
74	REVISED	10/1/00
75	REVISED	10/1/00
76	REVISED	10/1/00
77	REVISED	10/1/00
78	REVISED	10/1/00
79	REVISED	10/1/00
80	REVISED	10/1/00
81	REVISED	10/1/00
82	REVISED	10/1/00
83	REVISED	10/1/00
84	REVISED	10/1/00
85	REVISED	10/1/00
86	REVISED	10/1/00
87	REVISED	10/1/00
88	REVISED	10/1/00
89	REVISED	10/1/00
90	REVISED	10/1/00
91	REVISED	10/1/00
92	REVISED	10/1/00
93	REVISED	10/1/00
94	REVISED	10/1/00
95	REVISED	10/1/00
96	REVISED	10/1/00
97	REVISED	10/1/00
98	REVISED	10/1/00
99	REVISED	10/1/00
100	REVISED	10/1/00



DETAIL LEGEND		NO. OF SHEETS
1	1/2" x 1/2" x 1/2"	1
2	1/2" x 1/2" x 1/2"	1
3	1/2" x 1/2" x 1/2"	1
4	1/2" x 1/2" x 1/2"	1
5	1/2" x 1/2" x 1/2"	1
6	1/2" x 1/2" x 1/2"	1
7	1/2" x 1/2" x 1/2"	1
8	1/2" x 1/2" x 1/2"	1
9	1/2" x 1/2" x 1/2"	1
10	1/2" x 1/2" x 1/2"	1
11	1/2" x 1/2" x 1/2"	1
12	1/2" x 1/2" x 1/2"	1
13	1/2" x 1/2" x 1/2"	1
14	1/2" x 1/2" x 1/2"	1
15	1/2" x 1/2" x 1/2"	1
16	1/2" x 1/2" x 1/2"	1
17	1/2" x 1/2" x 1/2"	1
18	1/2" x 1/2" x 1/2"	1
19	1/2" x 1/2" x 1/2"	1
20	1/2" x 1/2" x 1/2"	1
21	1/2" x 1/2" x 1/2"	1
22	1/2" x 1/2" x 1/2"	1
23	1/2" x 1/2" x 1/2"	1
24	1/2" x 1/2" x 1/2"	1
25	1/2" x 1/2" x 1/2"	1
26	1/2" x 1/2" x 1/2"	1
27	1/2" x 1/2" x 1/2"	1
28	1/2" x 1/2" x 1/2"	1
29	1/2" x 1/2" x 1/2"	1
30	1/2" x 1/2" x 1/2"	1
31	1/2" x 1/2" x 1/2"	1
32	1/2" x 1/2" x 1/2"	1
33	1/2" x 1/2" x 1/2"	1
34	1/2" x 1/2" x 1/2"	1
35	1/2" x 1/2" x 1/2"	1
36	1/2" x 1/2" x 1/2"	1
37	1/2" x 1/2" x 1/2"	1
38	1/2" x 1/2" x 1/2"	1
39	1/2" x 1/2" x 1/2"	1
40	1/2" x 1/2" x 1/2"	1
41	1/2" x 1/2" x 1/2"	1
42	1/2" x 1/2" x 1/2"	1
43	1/2" x 1/2" x 1/2"	1
44	1/2" x 1/2" x 1/2"	1
45	1/2" x 1/2" x 1/2"	1
46	1/2" x 1/2" x 1/2"	1
47	1/2" x 1/2" x 1/2"	1
48	1/2" x 1/2" x 1/2"	1
49	1/2" x 1/2" x 1/2"	1
50	1/2" x 1/2" x 1/2"	1
51	1/2" x 1/2" x 1/2"	1
52	1/2" x 1/2" x 1/2"	1
53	1/2" x 1/2" x 1/2"	1
54	1/2" x 1/2" x 1/2"	1
55	1/2" x 1/2" x 1/2"	1
56	1/2" x 1/2" x 1/2"	1
57	1/2" x 1/2" x 1/2"	1
58	1/2" x 1/2" x 1/2"	1
59	1/2" x 1/2" x 1/2"	1
60	1/2" x 1/2" x 1/2"	1
61	1/2" x 1/2" x 1/2"	1
62	1/2" x 1/2" x 1/2"	1
63	1/2" x 1/2" x 1/2"	1
64	1/2" x 1/2" x 1/2"	1
65	1/2" x 1/2" x 1/2"	1
66	1/2" x 1/2" x 1/2"	1
67	1/2" x 1/2" x 1/2"	1
68	1/2" x 1/2" x 1/2"	1
69	1/2" x 1/2" x 1/2"	1
70	1/2" x 1/2" x 1/2"	1
71	1/2" x 1/2" x 1/2"	1
72	1/2" x 1/2" x 1/2"	1
73	1/2" x 1/2" x 1/2"	1
74	1/2" x 1/2" x 1/2"	1
75	1/2" x 1/2" x 1/2"	1
76	1/2" x 1/2" x 1/2"	1
77	1/2" x 1/2" x 1/2"	1
78	1/2" x 1/2" x 1/2"	1
79	1/2" x 1/2" x 1/2"	1
80	1/2" x 1/2" x 1/2"	1
81	1/2" x 1/2" x 1/2"	1
82	1/2" x 1/2" x 1/2"	1
83	1/2" x 1/2" x 1/2"	1
84	1/2" x 1/2" x 1/2"	1
85	1/2" x 1/2" x 1/2"	1
86	1/2" x 1/2" x 1/2"	1
87	1/2" x 1/2" x 1/2"	1
88	1/2" x 1/2" x 1/2"	1
89	1/2" x 1/2" x 1/2"	1
90	1/2" x 1/2" x 1/2"	1
91	1/2" x 1/2" x 1/2"	1
92	1/2" x 1/2" x 1/2"	1
93	1/2" x 1/2" x 1/2"	1
94	1/2" x 1/2" x 1/2"	1
95	1/2" x 1/2" x 1/2"	1

**Christian County High School
PROPOSAL REQUEST PRICING SHEET
ALLIANCE JOB #22-033**

PROPOSED CHANGE REQUEST NO. PR-49 R1 DATE 8/15/2025

DESCRIPTION North Dumpster Enclosure

CONTRACTOR A&K Construction BID PKG. 31-Concrete

WORK DESCRIPTION Concrete for the new North Dumpster Enclosure

A. UNIT PRICING FROM FORM OF PROPOSAL

1. UNIT PRICING	<u> </u> QTY.	<u> </u> U.P.	<u>\$ -</u>	TOTAL COST
2. UNIT PRICING	<u> </u> QTY.	<u> </u> U.P.	<u>\$ -</u>	TOTAL COST
3. UNIT PRICING	<u> </u> QTY.	<u> </u> U.P.	<u>\$ -</u>	TOTAL COST

B. MATERIAL

1. Materials	ITEM	<u>1</u> ls	<u>\$ 1,900.00</u>	UNIT	<u>\$ 1,900.00</u>
2. <u> </u>	ITEM	<u> </u> TN	<u> </u>	UNIT	<u>\$ -</u>
3. <u> </u>	ITEM	<u> </u> LS	<u> </u>	UNIT	<u>\$ -</u>
4 <u> </u>	ITEM	<u> </u> LS	<u> </u>	UNIT	<u>\$ -</u>
5 6% KY Sales Tax	ITEM	<u>1</u> QTY.	<u>6%</u>	UNIT	<u>\$ 114.00</u>

MATERIAL TOTAL \$ 2,014.00

LABOR

1. 96	HOURS @	<u>\$ 48.32</u>	\$/HR	<u>\$ 4,638.72</u>
2. Place & Finish Sub	HOURS @	<u>\$ -</u>	\$/HR	<u>\$ 1,000.00</u>
3. <u> </u>	HOURS @	<u> </u>	\$/HR	<u>\$ -</u>

LABOR TOTAL \$ 5,638.72

EQUIPMENT

EQUIPMENT TOTAL \$ 650.00

MATERIAL, LABOR & EQUIPMENT SUBTOTAL \$ 8,302.72

15% OVERHEAD/PROFIT MARK-UP \$ 1,245.41

DEDUCT DPO (DIRECT PURCHASE ORDER) MATERIAL \$ -

TOTAL ADD \$ 9,548.13

NOTE: CONTRACTORS ARE TO USE UNIT PRICES WHERE APPLICABLE.

FACPAC Contract Change Order

Supplemental Information Form (Ref# 63107)

Form Status: Saved

Tier 1 Project: Consolidated High School

BG Number: 22-104

Status: Active

District: Christian County (HB678) (115)

Phase: Project Initiation (View Checklist)

Contract: A & K Construction, Inc. , 0031, Concrete

Type: CM Bid Package

Proposed

Change Order Number	4
Time Extension Required	No
Date Of Change Order	8/27/2025
Change Order Amount To Date	Increase

Construction Contingency

Calculations below are project wide. Remaining negative Construction Contingency may require the submission of a revised BG1.

Current Approved Amount	\$6,320,436.60
Net Approved COs	\$1,043,518.80
Remaining After Approved COs	\$5,276,917.80
Net All COs	\$984,355.29
Remaining After All COs	\$5,336,081.31

This Requested Change Order Amount \$9,548.13

+/-

Change In A/E Fee This Change Order

+/-

Change In CM Fee This Change Order \$0.00

+/-

Remaining Construction Contingency \$5,336,081.31

Balance

Contract Change Requested By Local Board of Education

Contract Change Reason Code Expansion of Scope

Change Order Description And Justification

Cost associated with additional concrete with North Dumpster Enclosure per PR #49.

Cost Benefit To Owner

The cost of this change order has been reviewed and determined to be reasonable.

Contract unit prices have been utilized No
to support the cost associated with this
change order.

Detailed Cost Breakdown

Contract unit prices have not been utilized, provide a detailed cost breakdown which separates labor, material, profit and overhead.

Detail Item	Amount	Percent of Total
Labor	\$5,638.72	59.06%
Materials	\$2,014.00	21.09%
Profit and Overhead	\$650.00	6.81%
Bond Insurance	\$1,245.41	13.04%
Cost Breakdown Total:	\$9,548.13	

Cost for this Change Order supported No
by an alternate bid or competitive price
quote

Explain Why

Executed contract with contractor.

Change Order Supplemental Information Form Signature Page (Online Form Ref# 63107)

Architect

Date

Construction Manager

Date

Finance Officer

Date

Local Board of Education Designee

Date