



AIA Document G731™ – 2019

Change Order, Construction Manager as Adviser Edition

PROJECT: (name and address)

Christian County High School
5185 Fort Campbell Blvd
Hopkinsville, KY 42240

OWNER: (name and address)

Christian County Board of Education
200 Glass Avenue Hopkinsville, KY 42240

CONTRACTOR: (name and address)

Shawn Jones Masonry
300 CC Lowry Drive Murray, KY 42071

CONTRACT INFORMATION:

Contract For: BP 040-06 Masonry
Date: September 08, 2023

CHANGE ORDER INFORMATION:

Change Order Number: 083
Date: August 27, 2025

ARCHITECT: (name and address)

Hafer PSC
101 E. Second Street, Suite 101 Owensboro, KY 42303

CONSTRUCTION MANAGER: (name and address)

Alliance Corporation
116 E. College Street Glasgow, KY 42141

THE CONTRACT IS CHANGED AS FOLLOWS:

(Insert a detailed description of the change and, if applicable, attach or reference specific exhibits. Also include agreed upon adjustments attributable to executed Construction Change Directives.)

Cost associated with additional masonry with North Dumpster Enclosure per PR #49.

The original Contract Sum was	\$	9,416,802.00
Net change by previously authorized Change Orders	\$	54,013.20
The Contract Sum prior to this Change Order was	\$	9,470,815.20
The Contract Sum will be increased by this Change Order in the amount of	\$	16,786.62
The new Contract Sum including this Change Order will be	\$	9,487,601.82

The Contract time will be unchanged by Zero(0) days.
The Contractor's Work shall be substantially complete on .

NOTE: This Change Order does not include adjustments to the Contract Sum or Guaranteed Maximum Price, or the Contract Time, that have been authorized by Construction Change Directive until the cost and time have been agreed upon by both the Owner and Contractor, in which case a Change Order is executed to supersede the Construction Change Directive.

NOT VALID UNTIL SIGNED BY THE ARCHITECT, CONSTRUCTION MANAGER, CONTRACTOR, AND OWNER.

ARCHITECT (Signature)

BY: Eric Rang, Hafer PSC
(Printed name, title, and license number if required)

Date

CONSTRUCTION MANAGER (Signature)

BY: Kevin Hitchel, Alliance Corporation
(Printed name and title)

Date

CONTRACTOR (Signature)

BY: Jon Carpenter, Shawn Jones Masonry
(Printed name and title)

Date

OWNER (Signature)

BY: Christopher Bentzel, Christian County Board of Education
(Printed name and title)

Date



PROPOSED CHANGE ORDER

PROJECT Christian County High School

CONTRACTOR/SUPPLIER Shawn Jones Masonry

BID PACKAGE 040 83) 040-06

DETAIL ITEM	AMOUNT	
LABOR	\$	8,453.00
MATERIALS	\$	6,057.00
PROFIT & OVERHEAD	\$	2,176.50
BOND INSURANCE	\$	100.12
COST BREAKDOWN TOTAL	\$	16,786.62

DESCRIPTION

Additional masonry associated with North Dumpster Enclosure per PR #49

PR # 49 (ATTACH PR)

CHANGE ORDER INITIATED BY:

- ARCHITECT/ENGINEER
- OWNER
- CONTRACTOR
- CM
- CODE OFFICIAL
- OTHER _____

PLEASE INCLUDE THIS FORM WITH EVERY CHANGE ORDER.

PROPOSAL REQUEST

Project: Christian County High School PR No.: 049
5185 Ft. Campbell Blvd
Hopkinsville, KY 42240 Date: July 10, 2025

Owner: Christian County Public Schools Project Number: 2106-204
222 Glass Ave
Hopkinsville, KY 42240 Contract for: Mason, General, Civil,
Steel

To: Kevin Hitchell
Alliance Corporation
116 E. College Steet
Glasgow, KY 42141

RE: **North Dumpster Enclosure**

Please submit an itemized quotation for changes in the Contract Sum and/or Time incidental to proposed modifications to the Contract Documents described herein.
THIS IS NOT A CHANGE ORDER NOR A DIRECTION TO PROCEED WITH THE WORK DESCRIBED HEREIN.

Description:

1. Provide a price to construct dumpster enclosure as shown on A1.1D, and modify parking lot surface to provide concrete pad as shown on attached civil drawings.

Attachments: A1.1D, C3.01, C3.1, C4.1

By: Eric Rang, Rick Harper

CC: Steve Harding, Jason Wilson



105 E. BO 22-154

184 FT. CAMPBELL BLVD
HOPKINSVILLE, KY 42240

HAFER
ARCHITECTS

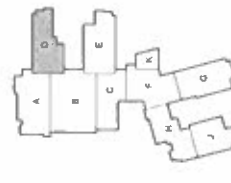
ALLIANCE
ARCHITECTS

bell
ARCHITECTS

K-S Engineering PLLC
ARCHITECTS

WBW
ARCHITECTS

GT
ARCHITECTS



Discipline	Author	Checked By
Architecture		
Structural		
Mechanical		
Electrical		
Plumbing		
Fire Protection		
Energy		
Other		

Sheet Title: **FIRST FLOOR PLAN - AREA**
 Architect's Project No: 2106-204
 Date: May, 20

Drawing No: **A1.1D**

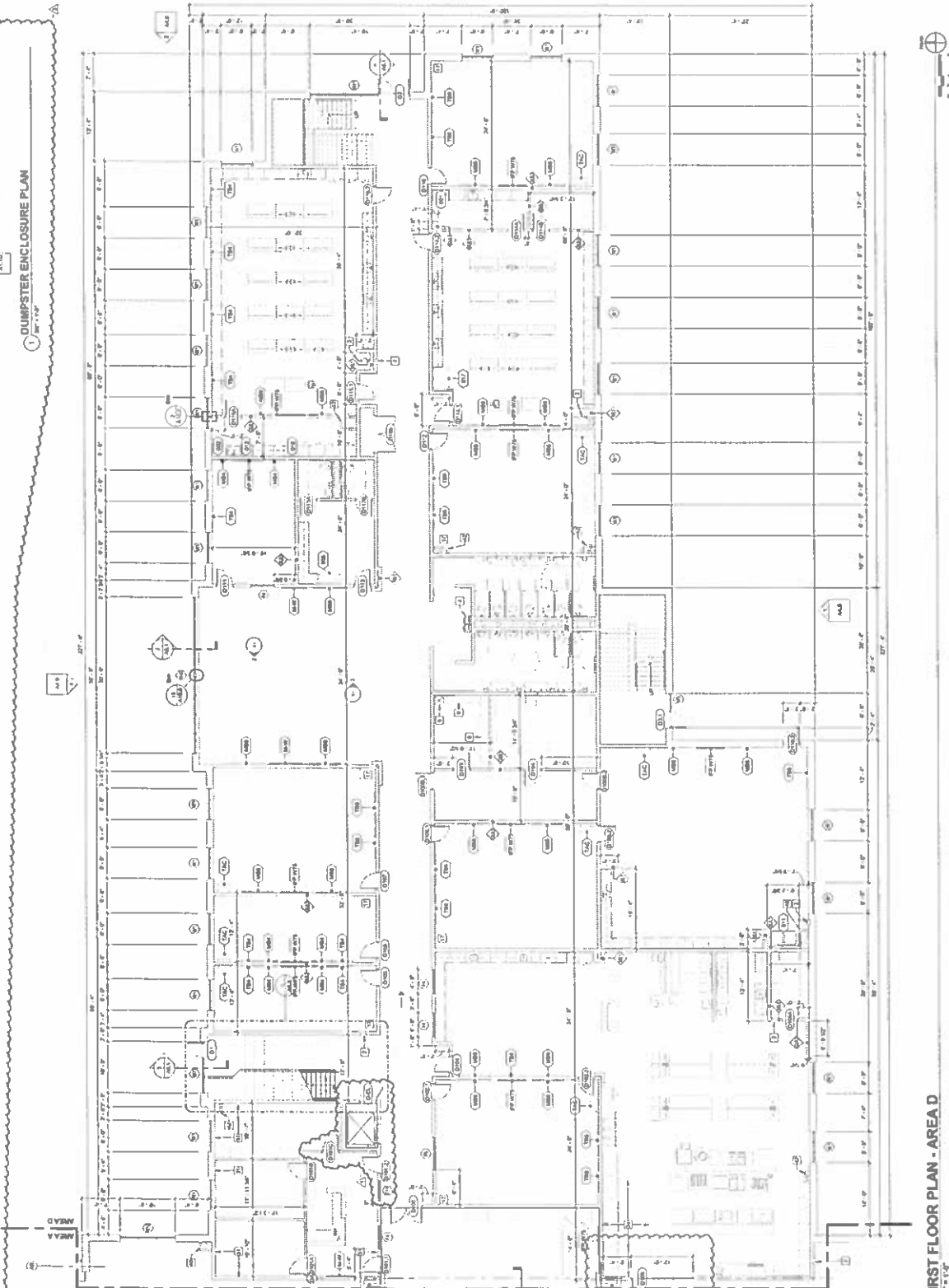
- GENERAL FLOOR PLAN NOTES:**
1. REFER TO GENERAL FLOOR PLAN FOR GENERAL NOTES.
 2. FINISH FLOOR TO FINISH FLOOR.
 3. FINISH FLOOR TO FINISH FLOOR.
 4. FINISH FLOOR TO FINISH FLOOR.
 5. FINISH FLOOR TO FINISH FLOOR.
 6. FINISH FLOOR TO FINISH FLOOR.
 7. FINISH FLOOR TO FINISH FLOOR.
 8. FINISH FLOOR TO FINISH FLOOR.
 9. FINISH FLOOR TO FINISH FLOOR.
 10. FINISH FLOOR TO FINISH FLOOR.
 11. FINISH FLOOR TO FINISH FLOOR.
 12. FINISH FLOOR TO FINISH FLOOR.
 13. FINISH FLOOR TO FINISH FLOOR.
 14. FINISH FLOOR TO FINISH FLOOR.
 15. FINISH FLOOR TO FINISH FLOOR.
 16. FINISH FLOOR TO FINISH FLOOR.
 17. FINISH FLOOR TO FINISH FLOOR.
 18. FINISH FLOOR TO FINISH FLOOR.
 19. FINISH FLOOR TO FINISH FLOOR.
 20. FINISH FLOOR TO FINISH FLOOR.
 21. FINISH FLOOR TO FINISH FLOOR.
 22. FINISH FLOOR TO FINISH FLOOR.
 23. FINISH FLOOR TO FINISH FLOOR.
 24. FINISH FLOOR TO FINISH FLOOR.
 25. FINISH FLOOR TO FINISH FLOOR.
 26. FINISH FLOOR TO FINISH FLOOR.
 27. FINISH FLOOR TO FINISH FLOOR.
 28. FINISH FLOOR TO FINISH FLOOR.
 29. FINISH FLOOR TO FINISH FLOOR.
 30. FINISH FLOOR TO FINISH FLOOR.
 31. FINISH FLOOR TO FINISH FLOOR.
 32. FINISH FLOOR TO FINISH FLOOR.
 33. FINISH FLOOR TO FINISH FLOOR.
 34. FINISH FLOOR TO FINISH FLOOR.
 35. FINISH FLOOR TO FINISH FLOOR.
 36. FINISH FLOOR TO FINISH FLOOR.
 37. FINISH FLOOR TO FINISH FLOOR.
 38. FINISH FLOOR TO FINISH FLOOR.
 39. FINISH FLOOR TO FINISH FLOOR.
 40. FINISH FLOOR TO FINISH FLOOR.
 41. FINISH FLOOR TO FINISH FLOOR.
 42. FINISH FLOOR TO FINISH FLOOR.
 43. FINISH FLOOR TO FINISH FLOOR.
 44. FINISH FLOOR TO FINISH FLOOR.
 45. FINISH FLOOR TO FINISH FLOOR.
 46. FINISH FLOOR TO FINISH FLOOR.
 47. FINISH FLOOR TO FINISH FLOOR.
 48. FINISH FLOOR TO FINISH FLOOR.
 49. FINISH FLOOR TO FINISH FLOOR.
 50. FINISH FLOOR TO FINISH FLOOR.
 51. FINISH FLOOR TO FINISH FLOOR.
 52. FINISH FLOOR TO FINISH FLOOR.
 53. FINISH FLOOR TO FINISH FLOOR.
 54. FINISH FLOOR TO FINISH FLOOR.
 55. FINISH FLOOR TO FINISH FLOOR.
 56. FINISH FLOOR TO FINISH FLOOR.
 57. FINISH FLOOR TO FINISH FLOOR.
 58. FINISH FLOOR TO FINISH FLOOR.
 59. FINISH FLOOR TO FINISH FLOOR.
 60. FINISH FLOOR TO FINISH FLOOR.
 61. FINISH FLOOR TO FINISH FLOOR.
 62. FINISH FLOOR TO FINISH FLOOR.
 63. FINISH FLOOR TO FINISH FLOOR.
 64. FINISH FLOOR TO FINISH FLOOR.
 65. FINISH FLOOR TO FINISH FLOOR.
 66. FINISH FLOOR TO FINISH FLOOR.
 67. FINISH FLOOR TO FINISH FLOOR.
 68. FINISH FLOOR TO FINISH FLOOR.
 69. FINISH FLOOR TO FINISH FLOOR.
 70. FINISH FLOOR TO FINISH FLOOR.
 71. FINISH FLOOR TO FINISH FLOOR.
 72. FINISH FLOOR TO FINISH FLOOR.
 73. FINISH FLOOR TO FINISH FLOOR.
 74. FINISH FLOOR TO FINISH FLOOR.
 75. FINISH FLOOR TO FINISH FLOOR.
 76. FINISH FLOOR TO FINISH FLOOR.
 77. FINISH FLOOR TO FINISH FLOOR.
 78. FINISH FLOOR TO FINISH FLOOR.
 79. FINISH FLOOR TO FINISH FLOOR.
 80. FINISH FLOOR TO FINISH FLOOR.
 81. FINISH FLOOR TO FINISH FLOOR.
 82. FINISH FLOOR TO FINISH FLOOR.
 83. FINISH FLOOR TO FINISH FLOOR.
 84. FINISH FLOOR TO FINISH FLOOR.
 85. FINISH FLOOR TO FINISH FLOOR.
 86. FINISH FLOOR TO FINISH FLOOR.
 87. FINISH FLOOR TO FINISH FLOOR.
 88. FINISH FLOOR TO FINISH FLOOR.
 89. FINISH FLOOR TO FINISH FLOOR.
 90. FINISH FLOOR TO FINISH FLOOR.
 91. FINISH FLOOR TO FINISH FLOOR.
 92. FINISH FLOOR TO FINISH FLOOR.
 93. FINISH FLOOR TO FINISH FLOOR.
 94. FINISH FLOOR TO FINISH FLOOR.
 95. FINISH FLOOR TO FINISH FLOOR.
 96. FINISH FLOOR TO FINISH FLOOR.
 97. FINISH FLOOR TO FINISH FLOOR.
 98. FINISH FLOOR TO FINISH FLOOR.
 99. FINISH FLOOR TO FINISH FLOOR.
 100. FINISH FLOOR TO FINISH FLOOR.

DUMPSTER ENCLOSURE PLAN
10' 0" x 10' 0"

FRONT ELEVATION - DUMPSTER
10' 0" x 10' 0"

SIDE ELEVATION - DUMPSTER
10' 0" x 10' 0"

DUMPSTER WALL SECTION
10' 0" x 10' 0"



FIRST FLOOR PLAN - AREA D
10' 0" x 10' 0"



IDE # BC-22-04

5457 CAMPBELL BLVD
HOPKINSVILLE, KY 42404

HAFER
ARCHITECTS

ALLIANCE
ARCHITECTS & ENGINEERS

bell
ENGINEERING

K&S
ENGINEERING, PLLC

WBW
ARCHITECTS

GT
CONSTRUCTION MANAGEMENT



SITE KEY PLAN

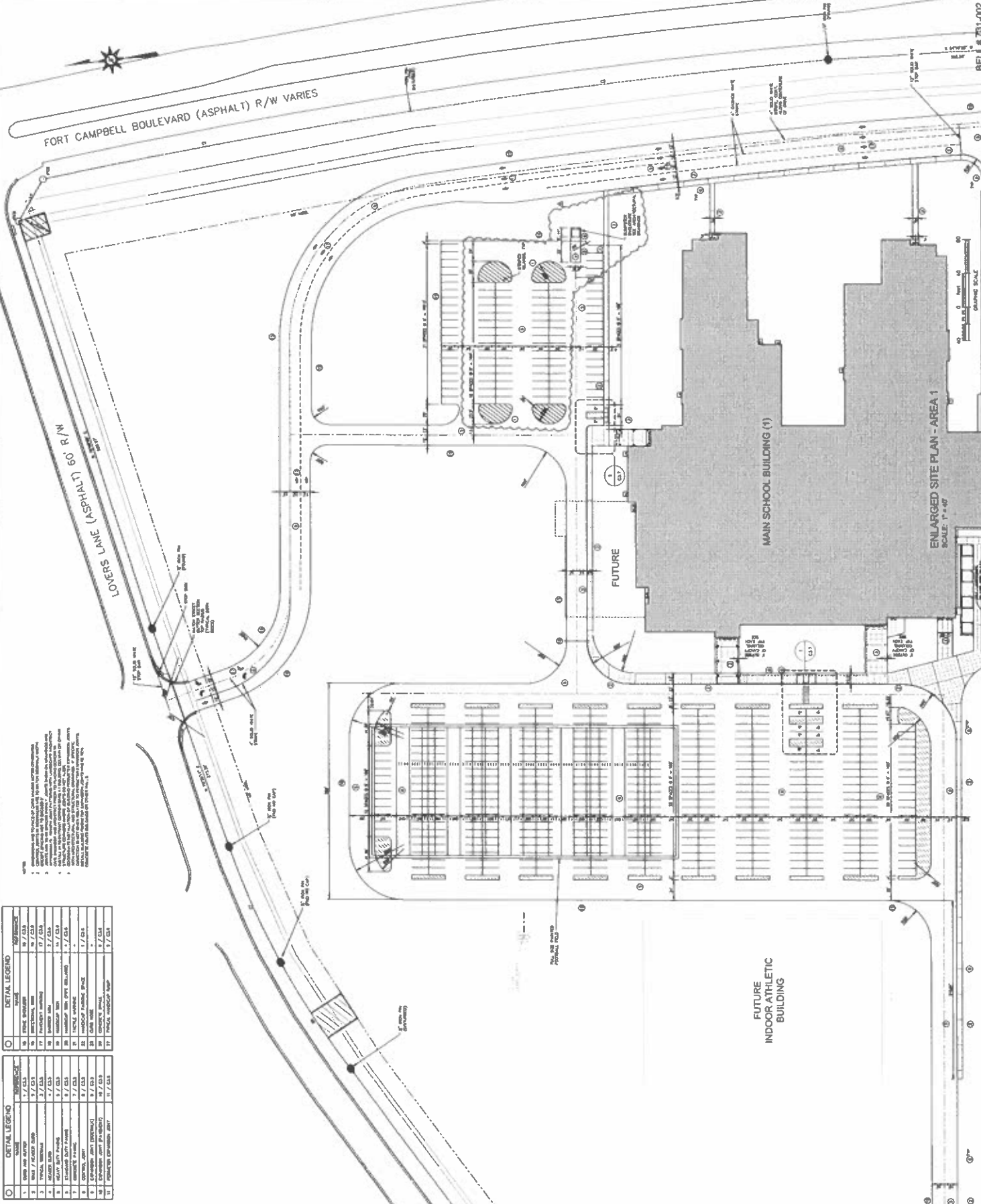


Drawn By	Checked By	Scale

ENLARGED SITE PLAN
AREA 1

Project No. 2106-201
Date: May, 2021
Drawing No. C3.1

C3.1



DETAIL LEGEND	DESCRIPTION	DATE
1	EXISTING ASPHALT DRIVE	11 / 7 / 2018
2	NEW / REPAVED DRIVE	1 / 7 / 2018
3	EXISTING DRIVE	1 / 7 / 2018
4	NEW DRIVE	1 / 7 / 2018
5	EXISTING DRIVE	1 / 7 / 2018
6	NEW DRIVE	1 / 7 / 2018
7	EXISTING DRIVE	1 / 7 / 2018
8	NEW DRIVE	1 / 7 / 2018
9	EXISTING DRIVE	11 / 7 / 2018
10	NEW DRIVE	11 / 7 / 2018
11	EXISTING DRIVE	11 / 7 / 2018
12	NEW DRIVE	11 / 7 / 2018
13	EXISTING DRIVE	11 / 7 / 2018
14	NEW DRIVE	11 / 7 / 2018
15	EXISTING DRIVE	11 / 7 / 2018
16	NEW DRIVE	11 / 7 / 2018
17	EXISTING DRIVE	11 / 7 / 2018
18	NEW DRIVE	11 / 7 / 2018
19	EXISTING DRIVE	11 / 7 / 2018
20	NEW DRIVE	11 / 7 / 2018
21	EXISTING DRIVE	11 / 7 / 2018
22	NEW DRIVE	11 / 7 / 2018

- 1. ALL DIMENSIONS ARE IN FEET UNLESS OTHERWISE NOTED.
- 2. ALL DIMENSIONS ARE TO FACE UNLESS OTHERWISE NOTED.
- 3. ALL DIMENSIONS ARE TO CENTERLINE UNLESS OTHERWISE NOTED.
- 4. ALL DIMENSIONS ARE TO CENTERLINE UNLESS OTHERWISE NOTED.
- 5. ALL DIMENSIONS ARE TO CENTERLINE UNLESS OTHERWISE NOTED.
- 6. ALL DIMENSIONS ARE TO CENTERLINE UNLESS OTHERWISE NOTED.
- 7. ALL DIMENSIONS ARE TO CENTERLINE UNLESS OTHERWISE NOTED.
- 8. ALL DIMENSIONS ARE TO CENTERLINE UNLESS OTHERWISE NOTED.
- 9. ALL DIMENSIONS ARE TO CENTERLINE UNLESS OTHERWISE NOTED.
- 10. ALL DIMENSIONS ARE TO CENTERLINE UNLESS OTHERWISE NOTED.
- 11. ALL DIMENSIONS ARE TO CENTERLINE UNLESS OTHERWISE NOTED.
- 12. ALL DIMENSIONS ARE TO CENTERLINE UNLESS OTHERWISE NOTED.
- 13. ALL DIMENSIONS ARE TO CENTERLINE UNLESS OTHERWISE NOTED.
- 14. ALL DIMENSIONS ARE TO CENTERLINE UNLESS OTHERWISE NOTED.
- 15. ALL DIMENSIONS ARE TO CENTERLINE UNLESS OTHERWISE NOTED.
- 16. ALL DIMENSIONS ARE TO CENTERLINE UNLESS OTHERWISE NOTED.
- 17. ALL DIMENSIONS ARE TO CENTERLINE UNLESS OTHERWISE NOTED.
- 18. ALL DIMENSIONS ARE TO CENTERLINE UNLESS OTHERWISE NOTED.
- 19. ALL DIMENSIONS ARE TO CENTERLINE UNLESS OTHERWISE NOTED.
- 20. ALL DIMENSIONS ARE TO CENTERLINE UNLESS OTHERWISE NOTED.
- 21. ALL DIMENSIONS ARE TO CENTERLINE UNLESS OTHERWISE NOTED.
- 22. ALL DIMENSIONS ARE TO CENTERLINE UNLESS OTHERWISE NOTED.

SCALE: 1" = 40'

SCALE: 1" = 40'

SCALE: 1" = 40'

SCALE: 1" = 40'

SCALE: 1" = 40'

SCALE: 1" = 40'

SCALE: 1" = 40'

SCALE: 1" = 40'

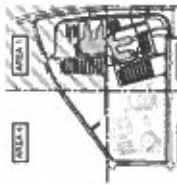
SCALE: 1" = 40'



NOE P 30-22-104

5405 E. CAMPBELL BLVD
HOPKINSVILLE, KY 40406

HAFER



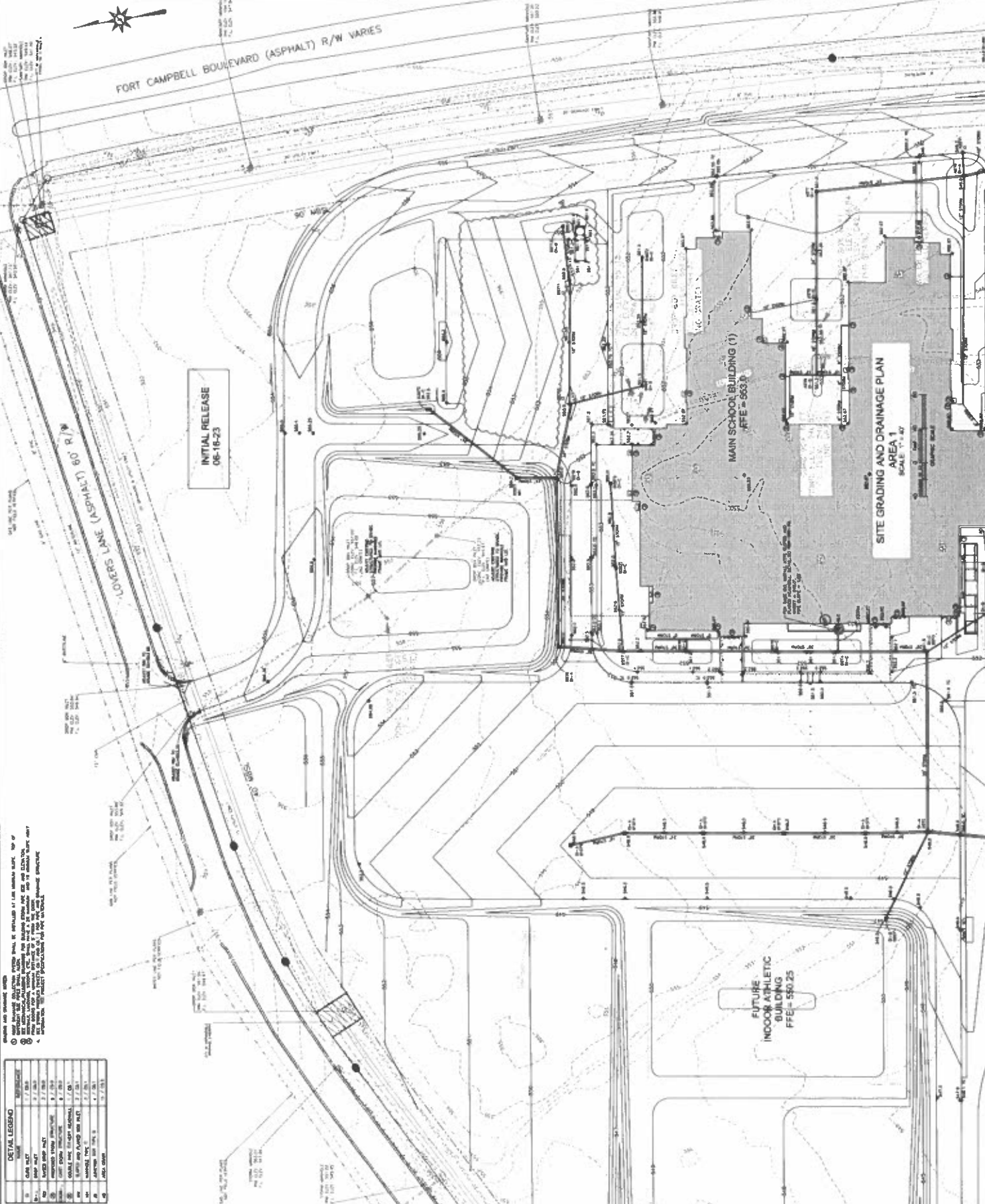
SITE KEY PLAN



NO.	DATE	DESCRIPTION
1	06-16-23	INITIAL RELEASE

Sheet No: **SITE GRADING AND DRAINAGE PLAN AREA 1**
 Architect's Project No: _____ Date: **May, 2023**
 Drawing No: _____

C4.1



DETAIL LEGEND

NO.	DESCRIPTION	REFERENCE
1	EXIST. ASPHALT	1, 2, 3, 4
2	EXIST. CONC. DRIVE	1, 2, 3, 4
3	EXIST. CONC. DRIVE	1, 2, 3, 4
4	EXIST. CONC. DRIVE	1, 2, 3, 4
5	EXIST. CONC. DRIVE	1, 2, 3, 4
6	EXIST. CONC. DRIVE	1, 2, 3, 4
7	EXIST. CONC. DRIVE	1, 2, 3, 4
8	EXIST. CONC. DRIVE	1, 2, 3, 4
9	EXIST. CONC. DRIVE	1, 2, 3, 4
10	EXIST. CONC. DRIVE	1, 2, 3, 4
11	EXIST. CONC. DRIVE	1, 2, 3, 4
12	EXIST. CONC. DRIVE	1, 2, 3, 4
13	EXIST. CONC. DRIVE	1, 2, 3, 4
14	EXIST. CONC. DRIVE	1, 2, 3, 4
15	EXIST. CONC. DRIVE	1, 2, 3, 4
16	EXIST. CONC. DRIVE	1, 2, 3, 4
17	EXIST. CONC. DRIVE	1, 2, 3, 4
18	EXIST. CONC. DRIVE	1, 2, 3, 4
19	EXIST. CONC. DRIVE	1, 2, 3, 4
20	EXIST. CONC. DRIVE	1, 2, 3, 4

NOTES AND DIMENSIONS:
 1. ALL DIMENSIONS ARE TO FACE UNLESS NOTED OTHERWISE.
 2. ALL DIMENSIONS ARE TO FACE UNLESS NOTED OTHERWISE.
 3. ALL DIMENSIONS ARE TO FACE UNLESS NOTED OTHERWISE.
 4. ALL DIMENSIONS ARE TO FACE UNLESS NOTED OTHERWISE.

**Christian County High School
PROPOSAL REQUEST PRICING SHEET
ALLIANCE JOB #22-033**

PROPOSED CHANGE REQUEST NO. PR-049 DATE 7/18/2025

DESCRIPTION North Dumpster Enclosure

CONTRACTOR Shawn Jones Masonry, Inc. BID PKG. 40

WORK DESCRIPTION Install CMU, Grout, & Brick

A. UNIT PRICING FROM FORM OF PROPOSAL

1. UNIT PRICING	_____ QTY.	_____ U.P.	\$ -	TOTAL COST
2. UNIT PRICING	_____ QTY.	_____ U.P.	\$ -	TOTAL COST
3. UNIT PRICING	_____ QTY.	_____ U.P.	\$ -	TOTAL COST

B. MATERIAL

1. CMU, mortar, sand, wire, grout & rebar	ITEM	_____ 325 QTY.	_____ UNIT	\$ 2,522.00
2. Brick, mortar, sand, flashing & weeps	ITEM	_____ 1,855 QTY.	_____ UNIT	\$ 3,192.00
3. sales tax	ITEM	_____ QTY.	_____ UNIT	\$ 343.00
MATERIAL TOTAL				\$ 6,057.00

LABOR

1. CMU & Grout	HOURS @	<u>30.98@106.26</u>	\$/HR	\$ 3,292.00
2. Brick	HOURS @	<u>44.80@106.26</u>	\$/HR	\$ 4,761.00
3. _____	HOURS @	_____	\$/HR	\$ -
LABOR TOTAL				\$ 8,053.00

EQUIPMENT

EQUIPMENT TOTAL \$ 400.00

MATERIAL, LABOR & EQUIPMENT SUBTOTAL	\$ 14,510.00
15% OVERHEAD/PROFIT MARK-UP	\$ 2,176.50
DEDUCT DPO (DIRECT PURCHASE ORDER) MATERIAL	\$ -
BOND	\$ 100.12
TOTAL ADD/DEDUCT	\$ 16,786.62

NOTE: CONTRACTORS ARE TO USE UNIT PRICES WHERE APPLICABLE.

FACPAC Contract Change Order Supplemental Information Form (Ref# 63106)

Form Status: Saved

Tier 1 Project: Consolidated High School

BG Number: 22-104

Status: Active

District: Christian County (HB678) (115)

Phase: Project Initiation (View Checklist)

Contract: Shawn Jones Masonry, Inc. , 0040, Masonry

Type: CM Bid Package

Proposed

Change Order Number	2
Time Extension Required	No
Date Of Change Order	8/27/2025
Change Order Amount To Date	Increase

Construction Contingency

Calculations below are project wide. Remaining negative Construction Contingency may require the submission of a revised BG1.

Current Approved Amount	\$6,320,436.60
Net Approved COs	\$1,043,518.80
Remaining After Approved COs	\$5,276,917.80
Net All COs	\$974,807.16
Remaining After All COs	\$5,345,629.44

This Requested Change Order Amount \$16,786.62

+/-

Change In A/E Fee This Change Order

+/-

Change In CM Fee This Change Order \$0.00

+/-

Remaining Construction Contingency \$5,345,629.44

Balance

Contract Change Requested By Local Board of Education

Contract Change Reason Code Expansion of Scope

Change Order Description And Justification

Cost associated with additional masonry with North Dumpster Enclosure per PR #49.

Cost Benefit To Owner

The cost of this change order has bene reviewed and determined to be reasonable.

Contract unit prices have been utilized No
to support the cost associated with this
change order.

Detailed Cost Breakdown

Contract unit prices have not been utilized, provide a detailed cost breakdown which separates labor, material, profit and overhead.

Detail Item	Amount	Percent of Total
Labor	\$8,453.00	50.36%
Materials	\$6,057.00	36.08%
Profit and Overhead	\$2,176.50	12.97%
Bond Insurance	\$100.12	0.60%
Cost Breakdown Total:	\$16,786.62	

Cost for this Change Order supported by an alternate bid or competitive price quote

Explain Why

Executed contract with contractor.

Change Order Supplemental Information Form Signature Page (Online Form Ref# 63106)

Architect

Date

Construction Manager

Date

Finance Officer

Date

Local Board of Education Designee

Date