



## FIELD OBSERVATION REPORT

West Hardin Middle School, 202280 -CA8

Date: 8/12/2025 Time: 11:30 AM

Weather: 80s/Cloudy

Observed by: Joseph Jones, AIA

Report No: 17

Trades Observed on Site: Excavators, Masons, Plumbers, Electricians, Geothermal

### 1. Work observed in Progress

- a) Masons were laying block at the platform level above the Cafeteria corridor, the classrooms in Area B and the platform areas in Area D.
- b) Earthwork was ongoing.
- c) Geothermal piping was being laid.
- d) Electrical and plumbing rough-ins.

### 2. General Observations

- a) From the northwest of the site, the concrete block walls enclose the kitchen, music rooms, and mechanical room with the gym in the background.
- b) Scaffolding was being erected to lay the block backup wall for the overhang at the kitchen loading dock.



- c) Block work was being completed on south end of the east cafeteria wall.



- d) At the east side of the cafeteria above the corridor, there is an opening in the fire rated wall separating Area B from Area C.



- e) The cafeteria exterior wall was still open for access to the interior of the building. Jeremy said that the masons will work their way out of Area D and complete Area C at the exterior of the cafeteria.



- f) Masons were laying concrete blocks at the tops of the walls in Area D. These walls form the structure for the mechanical platform spaces.



- g) From the southwest corner of the building, Area D block work was mostly complete.



- h) Metal roof deck was being installed over the roof joists over the gym. Due to the requirements for the storm shelter the joists are extra heavy and the deck will support a concrete slab to support the roofing materials.



- i) Electrical and plumbing rough ins were in place to be laid in the concrete block walls for the middle and southern wings of classrooms.



- j) Concrete block walls were being laid on the first floor of the north classroom wing. It is critical that electrical and plumbing piping and devices be laid in the walls in the correct locations to properly serve the equipment to be used in the classrooms.





- k) The concrete block in the north classroom wing on the first floor forms the recessed entrances to the classrooms.



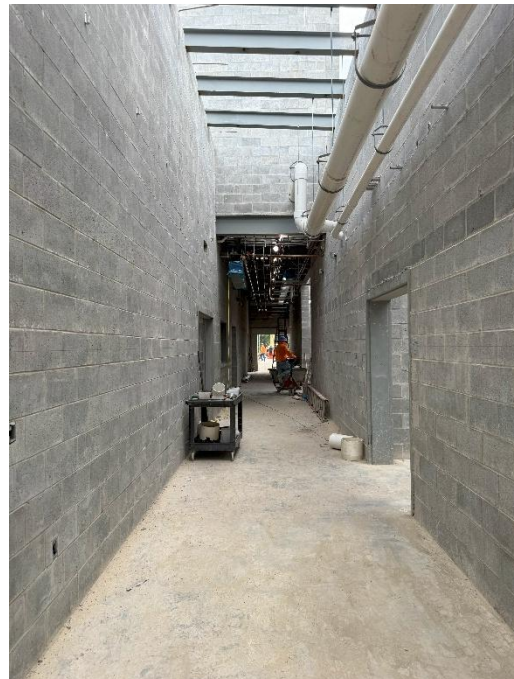
- l) First-floor classrooms were being constructed in the north classroom wing. Precast concrete floor panels are on order and will soon be installed on the tops of these walls so the second-floor concrete block can be laid.



- m) Plumbing and electrical piping and boxes were in place for the concrete block walls in the classroom wings.



- n) The corridor by the mechanical room and music rooms were being completed. The mechanical platform will run above the corridor. The steel beams will support the platform.



- o) The corridor in the storm shelter has been mocked up with the utilities that will be above the ceiling. The mechanical platform above that is supported by steel floor deck.



- p) As areas of concrete block have been laid, the hollow metal door frames have been cleaned so they are ready for paint when the building is enclosed. Mortar needs to be cleaned off the frames including above the heads for a smooth substrate for the paint finish.





- q) The geothermal well piping was being fused together.



- r) Trenches for the geothermal piping were excavated beside the well heads.



### 3. Stored Material Observed:

- a) Concrete accessories.
- b) CMUs (concrete block) and accessories.
- c) Steel roof joist and framing.
- d) Storm piping and structures.
- e) Hollow metal frames.
- f) Sanitary piping and fittings.
- g) Electrical conduits and fittings.
- h) Geothermal piping.

- i) Skudo Board.

**4. Follow up items:**

- a) Special inspection reports with emphasis on the storm shelter area.

Follow up by:

☐ Architect, ☐ Owner, ☐ MEP Engineer, ☐ Structural Engineer,  
☐ Civil Engineer ☒ Construction Manager, Other

Respectfully submitted,

JRA Architects  
Joseph Jones, AIA,  
Construction Contract Administrator

Cc: 202280, CA8, HCS, Wehr, Icon, STW, EDG, JRA