

**nao\*medical**

**naomedical.com**

**OLDHAM COUNTY SCHOOLS  
OCCUPATIONAL MEDICINE FOR STAFF &  
STUDENTS DRUG TESTING**

**Nao Medical:**

Statcare Urgent & Walk-in Medical Care PLLC

DBA Nao Medical

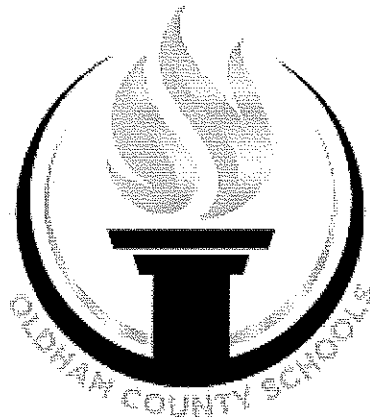
135 Mineola Blvd, Mineola, NY 11501

**Principal Contact:**

Priti Jain, MD

[occhealthgrp@naomedical.com](mailto:occhealthgrp@naomedical.com)

516-695-7493



## **Table of Contents**

1. Attestation	1
2. Executive Summary	1
3. Nao Medical's Responses to the Scope of Work	3
4. Nao Medical value added service	9
5. Cost Proposal and Proposal Form	12
6. Nao Medical's Background and Organization	14
7. References	15
8. Sample Process Flows	20
9. Organizational Chart	20
10. Medical License (Attached to proposal)	23
11. Qualifications and client experience	24

## 1. Attestation

Submission of this form is an acknowledgement that I understand and agree to the following terms: This formal offer will remain firm and non-revocable for a minimum period of 180 days from the Proposal Due Date.

I, Priti Jain M.D, CEO of Nao Medical certify that, to the best of my knowledge, the supplied information for this proposal is true, accurate and complete.

## 2. Executive Summary

Statcare Urgent & Walk-in Medical Care PLLC (DBA Nao Medical) was founded on April 12, 2011, with the goal of revolutionizing medical care service and delivery by emphasizing Clarity, Thoughtfulness, and Respect. Our core values guide everything we do. Today, we have over 250 employees and multiple locations, serving health needs across NY and surrounding communities through our on-the-go program and locations. We have serviced over 1 million New Yorkers and are excited to continue to grow our footprint and connection to NY and its residents. Nao Medical is based in Mineola NY.

Nao Medical operates more than a dozen locations throughout all the NYC boroughs and Long Island, and we are continuously expanding. We are M/WBE certified with the city of New York and are in the process of obtaining our NY State MWBE certification and will be applying for Oldham County Schools certifications. Nao Medical is a full-service Medical Center offering Urgent Care, Primary Care, GYN, Nutrition, Tele-med, Mental Health, and Occupational Health services. We have a free concierge service for our patient's health care journey. We are licensed in multiple states, multilingual, a fully staffed call center and after-hours care program. In addition to serving local communities with the best care, Nao Medical provides a wide range of services, including but not limited to:

- **Annual physicals**
- **Vaccines/Titers**
- **COVID-19 testing, Flu Testing**
- **Monoclonal Antibody Treatment/IV Hydration Infusions**
- **Telehealth appointments with extended hours**
- **Laboratory services, including STD and HIV screening and all other blood tests**
- **Mobile medical units for off-site testing**
- **Home care visits**
- **X-RAY (in select locations)**
- **Mental Health**
- **MAT (Suboxone therapy)**
- **Nutrition Services**
- **Immigration Services**
- **Occupational Health Services**
- **Drug & Alcohol Testing**

We offer all these services at any of our locations, 365 days a year, with no prior appointment necessary. Additionally, our mobile medical team can provide comprehensive care on-site at any remote location.

Nao Medical stands out as a full-service nationwide Third Party Administrator (TPA) for occupational health services, distinguished by its comprehensive approach that extends beyond traditional offerings. We offer an extensive range of health solutions tailored to meet the unique needs of businesses and their employees, encompassing not only occupational health but also internal telemedicine services, virtual primary care, nutrition counseling, and mental health support.

Our services are meticulously designed to cater to the evolving health needs of the modern workforce. We provide a wide array of occupational health services, including but not limited to on-site COVID-19 testing, D.O.T. physicals, pre-employment and post-offer exams, tele-visits for employees, respiratory physicals, pulmonary function testing, digital x-rays, federal drug testing, wellness physicals, ergonomic assessments, and a comprehensive suite of vaccines and flu shots

What sets Nao Medical apart is our integrated approach to health care. Our capabilities are not just limited to addressing physical health concerns but also extend to supporting mental well-being, nutrition, and overall health maintenance. This holistic approach is facilitated through our telemedicine services, which ensure accessibility and convenience for all employees, thereby promoting a healthier, more productive workforce.

Moreover, our commitment to quality care is reflected in our operations and client support systems. Nao Medical's dedicated staff and specialized account management services ensure that our occupational health clients receive the highest quality of patient care. Open 365 days a year, including holidays, and with a network of conveniently located offices throughout the NYC area, we guarantee accessible and reliable services tailored to the needs of businesses

Our qualifications and extensive experience in the health sector underscore our capacity to serve a broad spectrum of health needs. With certifications in various medical and occupational health services and a solid background in providing comprehensive health solutions, Nao Medical is well-equipped to be a trusted partner in enhancing the health and productivity of your workforce

In conclusion, as your partner, Nao Medical is dedicated to minimizing unnecessary lost time, meeting federal regulations, managing OSHA recordables, and reducing workers' compensation costs. By choosing Nao Medical, you are opting for a partner that not only understands the intricacies of occupational health but is also committed to providing a full spectrum of health services to support the well-being of your employees.

### **3. Response to the Scope of Work**

#### **1. Introduction and Overview**

Nao Medical, an established Third Party Administrator (TPA) and national provider of occupational health services, is pleased to submit this proposal to the Oldham County Board of Education for the provision of Employee Occupational Health Services and Random Student Drug Testing for the 2025-2026 school year.

Founded in 2011, Nao Medical has built a reputation based on our core values: Respect, Clarity, and Thoughtfulness. We are a certified Minority and Women-Owned Business Enterprise (MWBE) and have spent over a decade servicing a wide variety of occupational health needs across the United States.

We provide full-service occupational health and drug/alcohol testing programs through our direct staff and our certified laboratory partners, including Quest Diagnostics, LabCorp, and CRL (Corporate Reference Laboratory), all of which are SAMSHA-certified and fully compliant with DOT and federal standards.

Through our extensive partner network, we have active collection sites operating across the State of Kentucky, the broader region, and nationwide. Our staffing model ensures certified personnel are available at every step, from collectors to program supervisors, ensuring seamless execution of all collection and testing services.

Nao Medical acknowledges, accepts, and agrees to comply with all the terms, conditions, specifications, instructions, and general requirements outlined in the Oldham County Schools Request for Proposal. We understand that the Board reserves the right to accept or reject proposals and waive formalities as needed. We also confirm full compliance with all applicable federal and state laws, including FERPA, HIPAA, and all confidentiality and privacy standards applicable to student and employee health data.

#### **2. Scope of Work**

Nao Medical will provide the following services in strict accordance with the Specifications outlined in the RFP:

##### **A. Random Selection Services**

- Utilize a computerized, impartial system to randomly select students for drug testing.
- Randomization will be performed by a Nao Medical representative and supervised by two Oldham County Board employees.
- Documentation of the selection process will be maintained for auditability.

##### **B. Specimen Collection and Chain of Custody**

- Certified collection professionals will conduct all specimen collections on-site at school locations.

- Students will be monitored by same-gender staff during collection to protect privacy.
- Water sources will be dyed before sample collection to prevent adulteration.
- Full Chain of Custody documentation will be maintained according to federal and industry standards.
- Each student will complete required custody and control forms.

### **C. Laboratory Testing and Analysis**

- All specimens will be securely transported to SAMSHA-certified laboratory partners: Quest Diagnostics, LabCorp, and CRL.
- Initial screening will use EMIT immunoassay techniques.
- Positive results will be confirmed by GC/MS.
- A portion of each specimen will be retained for a minimum of six (6) months to accommodate potential retests.

### **CI. Reporting of Test Results**

- Negative results will be provided within 48 hours after specimen collection.
- Positive results (confirmed by GC/MS) will be provided within 72 hours.
- Written reports will include:
  - Student ID number
  - Collection date and location
  - Testing personnel identifiers
  - Type of testing performed
  - Verified test outcomes
- No verbal communication of results; full compliance with FERPA standards.

### **CII. On-Site Testing and Emergency Response**

- Mobile teams and on-site teams ready to deploy with 24-hour notice.
- Flexible scheduling options through our partner site network.
- Emergency post-incident collections available on demand.
- 24/7 availability through partner sites statewide.

### **CIII. Partner Network**

Through our partnerships with Quest Diagnostics, LabCorp, and CRL, Nao Medical offers unparalleled flexibility:

- Dozens of accessible collection locations across Kentucky.
- 24/7/365 availability for specimen collection.
- Rapid response capabilities for random testing, reasonable suspicion testing, and post-incident testing.
- Full compliance documentation, chain of custody management, and security oversight.

### 3. Qualifications and Vendor Experience

Nao Medical has extensive experience successfully administering drug and alcohol testing programs at a large scale for government and public sector clients nationwide. Some of our notable experience includes:

- **New York State Police** — full-service drug and alcohol testing across multiple regions.
- **NYC Department of Probation** — random testing programs and occupational health services.
- **NYC Department of Sanitation (DSNY)** — DOT and Non-DOT drug and alcohol testing services.
- **NYC Department of Parks and Recreation** — pre-employment and random testing programs.
- **NYC Administration for Children's Services (ACS)** — ongoing occupational health and drug testing support.
- **NYC Taxi and Limousine Commission (TLC)** — specialized pre-employment drug testing for licensing.
- **New York Thruway Authority** — recent award to manage occupational health services across critical infrastructure locations.
- **Fresno County, California** — contracted to provide drug and alcohol testing for county-wide employees, including DOT-regulated and safety-sensitive personnel.
- **New Mexico State Agencies:**
  - New Mexico Department of Health
  - New Mexico Regulation and Licensing Department
  - New Mexico Department of Justice
  - Dona Ana County

Across these programs, we provide:

- Both DOT and Non-DOT testing.
- Basic panels and extended controlled substance panels.
- Random testing, pre-employment testing, reasonable suspicion testing, and post-incident testing.
- Mobile and fixed-site collection capabilities.
- Strict regulatory compliance with state and federal guidelines.

With hundreds of thousands of tests administered annually, Nao Medical has the operational sophistication, technical expertise, and proven reliability to deliver best-in-class drug and alcohol testing services for the Oldham County Board of Education.

### 4. Key Personnel

The Nao Medical team brings strong leadership and extensive hands-on experience to oversee and execute the Oldham County Schools program:

- **Usman Farooq, Lead Project Manager**

Has experience of managing large-scale occupational health programs. Usman will serve as the primary point of contact, responsible for ensuring on-time execution, compliance monitoring, and reporting.

- **Sharad Suri, Lead Project Administrator**

Operational strategist with deep expertise in logistics coordination, scheduling, site management, and client reporting. Sharad will oversee all daily operations, including collection team scheduling and data management.

- **Michael Dominiak, Lead Medical Supervisor**

With extensive occupational health clinical experience, Michael will ensure all testing procedures, chain of custody protocols, and compliance requirements are upheld. He will also provide clinical oversight on positive test result reviews.

- **Dr. Priti Jain, Senior Executive Oversight**

As CEO of Nao Medical, Dr. Jain brings executive-level program leadership to ensure strategic guidance, swift problem resolution, and alignment with Board expectations.

Each member of this team has directly contributed to the success of the programs mentioned in Section 3 and is committed to delivering the highest quality services for the District.

#### **Nao Medical collection sites and Laboratory services:**

Nao Medical prioritizes flexibility and client-centric service by retaining the right to adjust laboratory affiliations with Oldham County Schools's consent. This strategic approach enhances our service availability across a broader geographic area and extends our operating hours, thanks to the addition of more laboratory and collection sites. Currently, we collaborate with leading laboratory companies such as Labcorp, Drugscan, CRL, and Quest, all of which offer third-party collection sites capable of furnishing all necessary documentation. This expansive network ensures comprehensive coverage throughout the region, allowing us to serve a wider audience effectively.

Moreover, Nao Medical is open to forming partnerships with local, qualified laboratories to enrich our network further, ensuring optimal service accessibility and competitive pricing. Our primary goal is to be lab-agnostic, focusing on what's best for our clients and their unique needs. This approach underlines our commitment to being customer-centric, where decisions are made not only based on what is available but what is best for those we serve, ensuring they receive high-quality, efficient, and convenient service tailored to their specific requirements.

**QUEST SITES (DOT and Non DOT Drug and Alcohol Testing)**

**1. Norton ICC - LaGrange**

1230 Market St, Ste B, La Grange, KY 40031

Hours: Mon-Sun: 8:00 am – 8:00 pm

**2. Norton ICC - Brownsboro**

9880 Angies Way, Ste 160, Louisville, KY 40241

Hours: Mon-Sun: 9:00 am – 6:00 pm

**3. Norton ICC - Middletown**

12903 Shelbyville Rd, Louisville, KY 40243

Hours: Mon-Fri: 9:00 am – 5:00 pm

**4. Norton ICC - Lyndon**

1321 Herr Ln, Ste 195, Louisville, KY 40222

Hours: Mon-Sun: 8:00 am – 8:00 pm

**5. ExamOne**

7400 New LaGrange Rd, Suite 303, Louisville,  
KY 40222

Hours: Mon-Fri: 8:00 am – 4:00 pm

**6. Norton ICC - Dupont**

901 Dupont Rd, Ste 100, Louisville, KY 40207

Hours: Mon-Sun: 8:00 am – 8:00 pm

**7. Norton Express Services**

2949 Breckenridge Ln, Louisville, KY 40220

Hours: Mon-Fri: 7:00 am – 6:30 pm

**8. Norton Medical Center ED**

2023 Mercy Way, Jeffersonville, IN 47130

Hours: 24/7

**9. Norton ICC - Jeffersonville**

3118 E 10th St, Jeffersonville, IN 47130

Hours: Mon-Sun: 9:00 am – 5:00 pm

**10. Norton ICC - Shelbyville**

150 Frankfort Rd, Ste 104A, Shelbyville, KY  
40065

Hours: Mon-Sun: 8:00 am – 5:00 pm

**11. Norton ICC - Highlands**

2470 Bardstown Rd, Louisville, KY 40205

Hours: Mon-Sun: 9:00 am – 6:00 pm

**12. Norton ICC - Fern Creek**

9340 Cedar Center Way, Louisville, KY 40291

Hours: Mon-Fri: 8:00 am – 8:00 pm

**13. AirBioHealth**

1714 Charlestown New Albany Rd, Ste 100,  
Jeffersonville, IN 47130

Hours: Mon-Fri: 8:00 am – 4:30 pm

**14. Business Health Plus, Inc.**

4755 Highway 31 E, Clarksville, IN 47129

Hours: Mon-Fri: 7:30 am – 5:00 pm

**15. Norton Clark Emergency Dept**

1220 Missouri Ave, Jeffersonville, IN 47130

Hours: 24/7

**16. Quest Diagnostics - Louisville Parkway**

1169 Eastern Pkwy, Ste 2343, Louisville, KY  
40217

Hours:

Mon-Fri: 7:30 am – 4:30 pm

Sat: 7:00 am – 12:00 pm

**17. Norton ICC - Audubon**

3101 Poplar Level Rd, Ste 102, Louisville, KY

40213

Hours: Mon-Sun: 8:00 am – 8:00 pm

**18. Norton ICC - Clarksville**

2051 Clevidence Blvd, Ste A, Clarksville, IN

47129

Hours: Mon-Sun: 8:00 am – 8:00 pm

**19. Accurate Drug & DNA Testing**

820 S 6th St, Louisville, KY 40203

Hours: Mon-Fri: 8:30 am – 4:00 pm

**20. Norton ICC - Mt Washington**

300 High Point Ct, Mount Washington, KY 40047

Hours: Mon-Fri: 8:00 am – 8:00 pm

**21. Fast Pace - Mount Washington**

145 Brookeway Dr, Mount Washington, KY

40047

Hours: Mon-Fri: 8:00 am – 8:00 pm

**22. Norton ICC - Dixie**

4420 Dixie Hwy, Ste 116, Louisville, KY 40216

Hours: Mon-Sun: 8:00 am – 8:00 pm

**CRL SITES (DOT and Non DOT Physicals)**

**1. CONCENTRA Dutchman's Parkway**

6460 Dutchmans Pkwy, Ste 102, Louisville, KY

40205

Hours: Mon-Fri: 8:00 am – 5:00 pm

**2. AIRBIOHEALTH**

1714 Charlestown New Albany Rd, Jeffersonville,

IN 47130

Hours: Mon-Sat: 9:00 am – 5:00 pm

**3. BUSINESS HEALTH PLUS, INC.**

4755 Highway 31 E, Clarksville, IN 47129

Hours: Mon-Fri: 7:30 am – 6:00 pm

**4. CONCENTRA Broadway**

901 W Broadway, Louisville, KY 40203

Hours: Mon-Fri: 8:00 am – 5:00 pm

**5. CONCENTRA Fern Valley**

6129 Airport Hotels Blvd, Louisville, KY 40213

Hours: Mon-Sun: 12:00 am – 11:30 pm

**6. KENTUCKY WORX**

2478 US Highway 227, Carrollton, KY 41008

Hours:

Mon: 8:00 am – 12:00 pm, 2:00 pm – 6:00 pm

Tue/Thu/Fri: 8:00 am – 12:00 pm, 2:00 pm – 5:00 pm

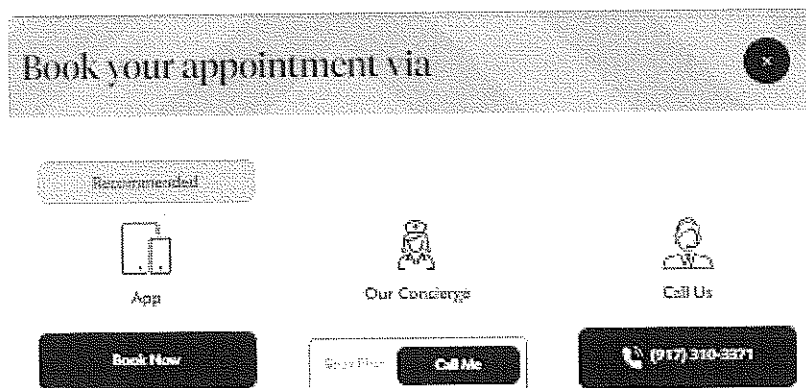
Wed: 8:00 am – 12:00 pm, 2:00 pm – 6:00 pm

**7. LAZO MEDICAL**

1229 Gilmore Ln, Louisville, KY 40213

Hours: Mon-Fri: 9:00 am – 3:00 pm

1. Nao Medical will provide scheduled access to collection sites with 24-hour availability within the Oldham County Schools . Nao Medical has a mobile unit that can be made available 24 hours a day. Nao Medical will have a portal & App that has collection site scheduling and availability and hours. This changes depending on the time of the year as collection site availability adjusts, Nao's call center and concierge service will also be able to schedule collection locations. Nao Medical will have a local on-call collector available 24/7 as needed.



N

Nao Medical's preferred methods of scheduling appointments is via our 1) **website** <https://naomedical.com/> or 2) Our **app** both available 24/7 or our 3) **concierge-service** <https://naomedical.com/concierge-service/> 4) or our **call center 917-801-2323**

## 4. Nao Medical Value Added Services

Nao Medical was founded by emergency room doctors who saw the need to keep patients out of the hospital and deliver care with our guiding principles of Thoughtfulness, Clarity, and Respect. Going to the doctors can be an overwhelming experience and our mission is to take the pain out of medicine. Focusing on preventative care, transparency, and patients first in a company founded and run by doctors with experience in medical emergencies, primary care, urgent care, immigration services, civil surgeon, nutrition, mental health women's health sets Nao Medical apart with our wide offerings.

### Nao Staffing Model:

We have developed a staffing model That tracks patients per hour and visits/calls per day that help us determine proper Drug Collector, PCA, MA, Scribe, Provider, Virtual support, and CBO staff including (Finance, Operations, HR, EA's, IT, Managers and Leadership) This gives us the ability and flexibility to understand and quickly adapt staffing as well as properly price services. Our HR team is constantly recruiting for our Tele-med and regular medical staff so we can expand quickly and manage our credentialing.

At Nao Medical, we understand that every business and organization is different. Therefore, we work closely with our clients to develop customized solutions based on their specific protocols and preferences.

### Call Center:

Our call center is a centerpiece of our organization. It is already existing and fully operational and has all the infrastructure in place to expand. We currently have 25 employees in our QA, Patient delight, Concierge and Call Center and have a proven record of rapid scalability. This does not include our Tele-med department or our over 50 providers across all our platforms. During the height of Covid we handled over 150,000 inbound calls and over 35,000 outbound calls monthly.

Our call center staff and provider team all follow scripts and process flows for each service type. Our QA team monitors calls to ensure all staff follow our core values of Respect, Clarity and Thoughtfulness and creates a performance report card enabling us to better evaluate and train staff. We are open 5 days a week from 8am to midnight and weekends from 8am to 8pm and can open 24 hours as needed.

All Nao medical staff will adhere to Oldham County Schools internal policies including but not limited to occupational health policies, enterprise information technology system policies, human resource policies and will incorporate those policies within our own HR and IT platforms.

**Technology:**

Nao Medical is a technology company at heart. We have a dynamic app, website and numerous systems in place that can be white labeled as Oldham County Schools Drug and Alcohol Testing Services. Our concierge services are already built and functional and tied into our call center and other support services to enable a back office support network that can schedule appointments and provide connection to our after hours and tele-med departments, lab results, and patient follow up calls.

**Mitigation plans:** Nao Medical has much experience unfortunately with staffing and transportation issues. We currently operate 7 days a week with hours 8am to midnight and weekends from 9am to 1pm across a dozen locations and will deal with staffing issues daily. We have for the last decade dealt with Hurricanes, Floods, Covid Pandemic, Monkeypox, and everything else the region has seen.

Our Staffing Model focuses on actual hourly patient needs by provider and support staff. It is based on our more than decade of experience in providing care that meets our core values. We have a fleet of vehicles that can shuttle test results and our staff if needed if transit is not available. We also can draw staff from our physical locations in emergencies. We currently have a staff of over 250 dedicated team members and move them daily to deal with staffing issues.

**Daily Coordination:** Nao Medical will have a dedicated member of our Senior leadership Team (SLT) to act as an “Executive Lead” with The Oldham County Schools Drug Testing Services Program leads. This person will be the central point of contact for all program operations, and will be available for all daily meetings. The Nao Executive Lead will be a member of our SLT and have a direct connection to our CEO to resolve all issues that arise with the program and will be available any time that is needed. Furthermore, there will be a dedicated call line and staff across all our support teams including HR, IT, Patient Delight, Tele-med, Call Center, and our provider network. The Nao Executive Lead will adhere to the daily check in process and integrate it within our systems to ensure a seamless documented experience.

**Minimum Access Patient Standards:** Nao Medical currently exists across metro NYC and virtually beyond and services all populations in a competent manner in accordance with our core values of Respect, Clarity, & Thoughtfulness. These core values are our DNA! We have Spanish speaking providers and a translation service that gives us the ability to communicate with almost any language. This is in place and ready upon demand and is a part of our Tele-med and call center services. We can brand everything on our platforms as Oldham County Schools seamlessly.

**Pricing:** The pricing and cost proposal we present considers all services, departments, support systems we have. Our proposal follows the format requested and we kept the pricing consistent across all durations requested and only adjusted prices to speed to ensure ability to move staff quickly to ensure proper staffing. Our proposal includes our services mentioned throughout this offering that are expanded beyond the requested proposal. Please see our Cost Proposal for more details.

**Availability:** Nao Medical is available NAO! We built our systems and Nao on-the-go to address current market conditions. We have the ability to service any type of account today and have a proven track record of ramping up quickly and can draw for our existing location provider pool if needed in emergencies. We would have a dedicated staff for this opportunity and can deploy and expand rapidly within 72 hours.

## 5. Cost Proposal and Proposal Form

**See submission**

### OLDHAM COUNTY BOARD OF EDUCATION PROPOSAL FORM – RANDOM DRUG TESTING OF STUDENTS

#### **PRICE**

**List price of each item below or list "No Bid"**

10 Panel Drug Screen (performed at SAMSHA lab)	\$60 (Including collection site fee and MRO charges)
10 Panel Drug Screen (performed at non-SAMSHA lab)	Only SAMSHA Labs
Confirmation Testing by GC/MS	\$60
Urine Alcohol Test	\$60
Collection Fee	On Site is \$300 per specimen Larger groups have discounts
Off-site (office location) collection fee	On Site is \$300 per specimen Larger groups have discounts
Random set-up and selection process	included

#### **OTHER FACTORS**

Name of forensic lab used for drug testing Quest Diagnostics or CRL or LabCorp

Certification held by forensic lab above SAMSHA, CAP, Licenses from different states

Hours of operation Hours vary by each site, details added in proposal above

Test Result delivery time 48-72 hours

Measures taken to maintain confidentiality HIPPA Compliant platforms and communication methods

How long is the remaining portion of urine retained According to legal standards compliant by the lab

Location of off-site collection facility added in the proposal

Company and contacts with 3 clients for whom you are performing tests: Yudelka.Mendoza@acs.nyc.gov

Yudelka Mendoza - Deputy Director of Certifications - Administration for Children's Services (ACS) - (212) 341-2560

Thomas L Burns - Senior Investigator New York State Police - 518-457-9865 - thomas.burns@troopers.ny.gov

Steven Cox - Labor Relations Analyst - Administrative Services, Human Resource Bureau - New Mexico Department of Health - 505) 827-2743

Steven.Cox@doh.nm.gov

---

**OLDHAM COUNTY BOARD OF EDUCATION  
PROPOSAL FORM –OCCUPATIONAL HEALTH SERVICES FOR STAFF**

**PRICE**

**List price of each item below or list “No Bid”**

Workers Compensation	No Bid
DOT PHYSICAL	\$160
DOT Drug Screen	\$60
Audiogram	\$60
Non-DOT Physical	\$200
Non-DOT Drug Screen	\$60
TB Skin Test	No bid
TB Assessment	No bid
Breath Alcohol	\$60
Hepatitis B Injections (series of 3 injections)	No bid
Hepatitis B Titer	No bid
Chest X-Ray	No bid
Flu Shots	No bid

**OTHER FACTORS**

Name of forensic lab used for drug testing Quest Dianostics or CRL orLabCorp

Certification held by forensic lab above SAMSHA, CAP, Licenses from different states

Hours of operation Hours vary by each site, details added in proposal above

Test Result delivery time 48-72 hours

Measures taken to maintain confidentiality HIPPA Compliant platforms and communication methods

Location of facility in regards to OCBE According to legal standards compliant by the lab  
added in the proposal

Company and contacts with 3 clients for whom you are performing tests: Yudelka.Mendoza@acs.nyc.gov

Yudelka Mendoza - Deputy Director of Certifications - Administration for Children's Services (ACS) - (212) 341-25

Thomas L Burns - Senior Investigator New York State Police - 518-457-9865 - thomas.burns@troopers.ny.gov

---

Steven Cox - Labor Relations Analyst - Administrative Services, Human Resource Bureau - New Mexico Department of Health - 505) 827-2743

Steven.Cox@doh.nm.gov

---

## 6. Background and Organization

**Number of Employees:** 250+

**Organizational Chart:** Please review our attached Organizational Chart

**Recently completed similar size projects or contracts:** On Site Testing and Exams/Drug and Alcohol

Testing/Covid Testing: Donors Choose, NYC Department of Probation, ACS, Segal Family Foundation, Amtrak, NYC Parks and many other similar accounts.

**Medical License:** Please see attached Medical Director License

**Years in Business:** 12+ since April 2011

**Legal Issues:** Nao Medical has no potential or pending litigation that could adversely impact our company or our ability to provide the goods or services being sought in this RFP. Nao Medical has no ongoing, or concluded within the last 5 years, inquiries, warnings, findings, or investigations of any governmental body with our company. Nao Medical has no governmental investigations, recalls, withdrawals or safety alerts of any good or service offered our company within the United States within the last two years

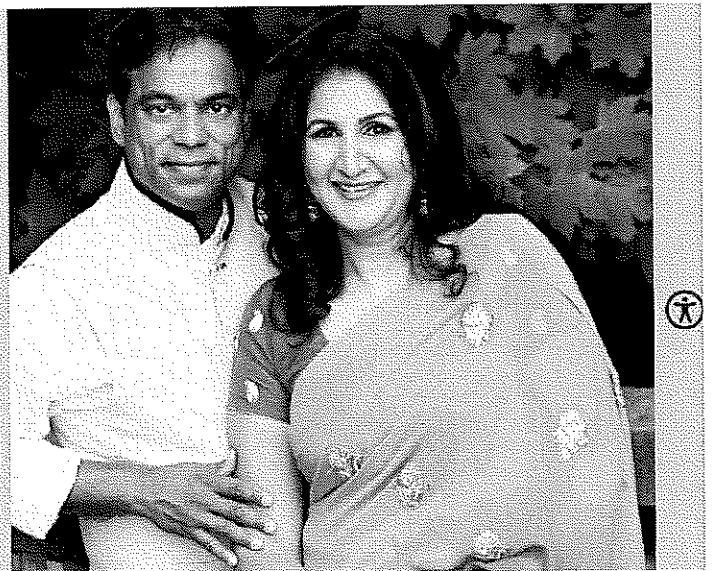
**Background of Principles:** Priti Jain M.D and Sandeep Jain M.D Founders of Nao Medical (Resumes upon request)

### Two doctors, one vision

#### Where it all started

While working long shifts as a doctor in the ER, Dr. Priti Jain saw that there was a huge gap developing between emergency care and primary care - and she decided something needed to change. Beginning as a small family-run company with big ambitions, Dr. Jain combined forces with her partner, Dr. Sandeep Jain. Together, they worked tirelessly, seeing patients while growing the business.

Nao Medical was created to provide truly personal healthcare and to be a resource to the local communities and residents it serves. Today Nao Medical operates across ten locations, has over 300 employees, and is a walk-in medical practice that bridges the gap between emergency and primary care. We continue to grow, expanding our range of services to support even more people in all the ways we can.



## 7. References

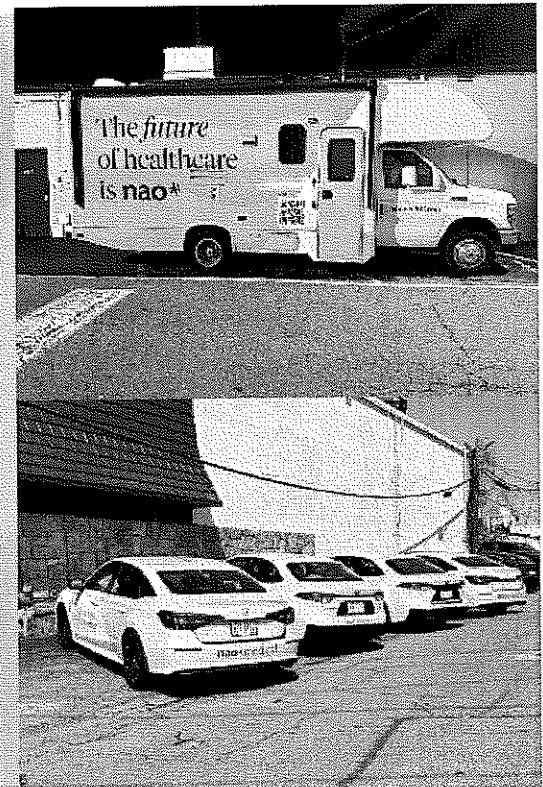
Department of Probation is a current and former client (on site- Medical services)

Name	Title	Company Name	Phone #	Email
Eileen Parfrey Smith	Agency Chief Contracting Officer	Department of Probation	212-510-3790	<a href="mailto:eesmith@probation.nyc.gov">eesmith@probation.nyc.gov</a>
Yudelka Mendoza	Deputy Director of Certifications The Office of Human Resources	ACS	212-341-2560	<a href="mailto:Yudelka.Mendoza@acs.nyc.gov">Yudelka.Mendoza@acs.nyc.gov</a>
Michael Wagner	Director for Permanency for Adoption and Foster Care	Children's Aid	646-912-3709	<a href="mailto:michaelw@childrensnyc.org">michaelw@childrensnyc.org</a>
Harlean A. Dennis	Sr. Vice President Family Foster Care Programs	Mercy First	718.232.1500 x 2350	<a href="mailto:hdennis@mercyfirst.org">hdennis@mercyfirst.org</a>

Deanna Tharpe	Network Development manager	Amtrak	512.439.3536	<a href="mailto:deannat@worksteps.com">deannat@worksteps.com</a>
---------------	-----------------------------	--------	--------------	--

### nao\*medical on the go

- We currently offer On the Go visits Across Metro NYC and Nassau County
- We have RV and medically stocked vans and cars ready to go
- On the Go visits can be booked through the app, concierge, or by calling our call center
- Our team can be on site in your location Nao!



The *future*  
of healthcare  
is nao\*



**Respect**



**Clarity**



**Thoughtfulness**

visit **naomedical.com**

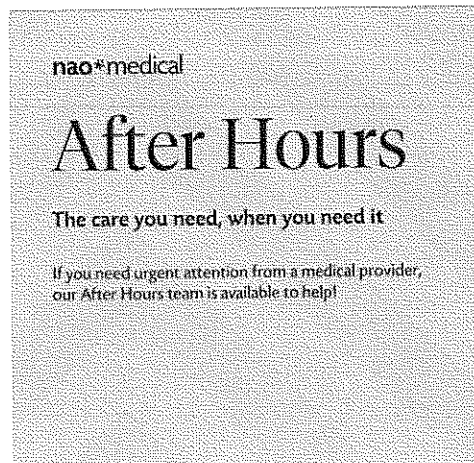
nao\*medical

## Virtual Visits

<p><b>Fouzia Fiaz</b> Fiaz, MD, PhD NEW</p>	<p><b>Yasmine Coud</b> Coud, MD NEW</p>	<p><b>Alexandria Coffey</b> Coffey, MD NEW</p>
<p><b>Keith Frazier</b> Frazier, MD NEW</p>	<p><b>Eddie Figueroa</b> Figueroa, MD NEW</p>	<p><b>Walter Boydston</b> Boydston, MD NEW</p>
<p><b>Hamed</b> Hamed, MD NEW</p>	<p><b>Melan Laycock</b> Laycock, MD NEW</p>	<p><b>Pam Malaga</b> Malaga, MD NEW</p>
<p><b>JACQUELINE FANTUCCI</b> Fantucci, MD NEW</p>	<p><b>Tashia Cox</b> Cox, MD NEW</p>	<p><b>Ray</b> Ray, MD NEW</p>
<p><b>Montique Evans</b> Evans, MD NEW</p>		



## After Hours Service



nao\*medical

nao\*medical

## Summary

### Why Nao Medical is the Best Choice for the Oldham County Schools:

#### 1. Extensive Experience Managing Public-Sector Drug and Alcohol Testing Programs

Nao Medical already administers large-scale occupational health and drug/alcohol testing programs for **major government agencies**, including:

- New York State Police
- NYC Department of Sanitation (DSNY)
- NYC Department of Probation
- NYC Parks and Recreation
- NYC Taxi and Limousine Commission (TLC)
- Administration for Children's Services (ACS)
- Fresno County, California
- New Mexico Department of Health, Department of Justice, and Regulation & Licensing

We understand **school district environments**, **strict confidentiality requirements**, and **public sector regulatory compliance** better than anyone.

#### 2. Certified National Laboratory Network

We provide testing through **Quest Diagnostics, LabCorp, and CRL** — all **SAMSHA-certified and DOT-compliant** laboratories.

- Faster turnaround time for results (48 hours negatives, 72 hours positives)
- Highest testing accuracy
- Nationwide coverage for flexibility

Our partner labs meet and exceed all federal, state, and accreditation standards.

### **3. Unmatched On-Site and Local Collection Capabilities**

Nao Medical has already identified and secured **over 22 nearby testing and collection sites** for both **DOT and Non-DOT** testing.

- Mobile teams available with 24-hour notice
- Local presence ensures rapid response
- Full statewide and surrounding state coverage through our partner network

You will never have to worry about site availability, collection logistics, or delays.

### **4. Dedicated Project Leadership**

Your program would be led by a **specialized senior leadership team**:

- **Usman Farooq**, Lead Project Manager
- **Sharad Suri**, Lead Administrator
- **Michael Dominiak**, Medical Supervisor
- **Dr. Priti Jain**, CEO and Senior Executive Oversight

This is not "off the side of the desk" work — you will have an **executive-level, accountable team** dedicated full-time to your program's success.

### **5. Flawless Chain of Custody and Compliance Protocols**

Every test conducted will follow:

- DOT, SAMSHA, CLIA, HIPAA, FERPA compliance standards
- Chain of custody from sample collection to reporting
- No verbal result sharing — strict written-only reporting
- Specimen retention for at least 6 months for legal compliance

You will have **audit-proof processes** with full documentation every step of the way.

### **6. Proven Ability to Scale Quickly**

During the COVID-19 pandemic, Nao Medical managed:

- Over 150,000 inbound calls monthly
- 35,000+ tests weekly
- Deployment of mobile clinics, staffing, and reporting across multiple states

This means Nao Medical can **ramp up, adapt, and solve problems instantly** if Oldham County's needs grow or change during the contract.

## 7. Commitment to Student and Employee Privacy and Dignity

We respect that drug and alcohol testing, especially for students, must be done:

- Discreetly
- Respectfully
- Privately
- In full compliance with FERPA protections

We train all collection personnel on **sensitivity, cultural competence, and dignity preservation** during collections.

## Conclusion

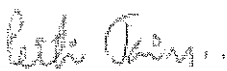
Nao Medical's nationwide network of major labs and medical partners, extensive experience, highly qualified team, comprehensive service offerings, and proven track record position us as the best choice for the Oldham County Schools's Occupational Health Services contract. Our commitment to compliance, confidentiality, and client satisfaction ensures that we are the most qualified and capable provider to meet your needs.

We look forward to the possibility of discussing this proposal in greater detail and to the opportunity to demonstrate our unparalleled commitment to quality care and client satisfaction in the occupational health sector. This comprehensive response is designed to convey Nao Medical's capabilities, readiness, and eagerness to meet and exceed the expectations of Oldham County Schools for their occupational health needs.

Nao medical is the perfect partner for the Oldham County Schools . We are ready Nao! We are operational Nao! We can handle the volume Nao! We have an on-the-go team ready to serve your locations, we offer a full medical care team, we have a full IT and back-office support team, we have a call center in operation that can handle surges in all languages, We offer full service across Nutrition, Mental Health, Women's Health, Immigration Services, Urgent Care, Primary Care and Value Based Care. We appreciate the opportunity to submit this proposal.

Thank you for your consideration.

Nao Medical Team



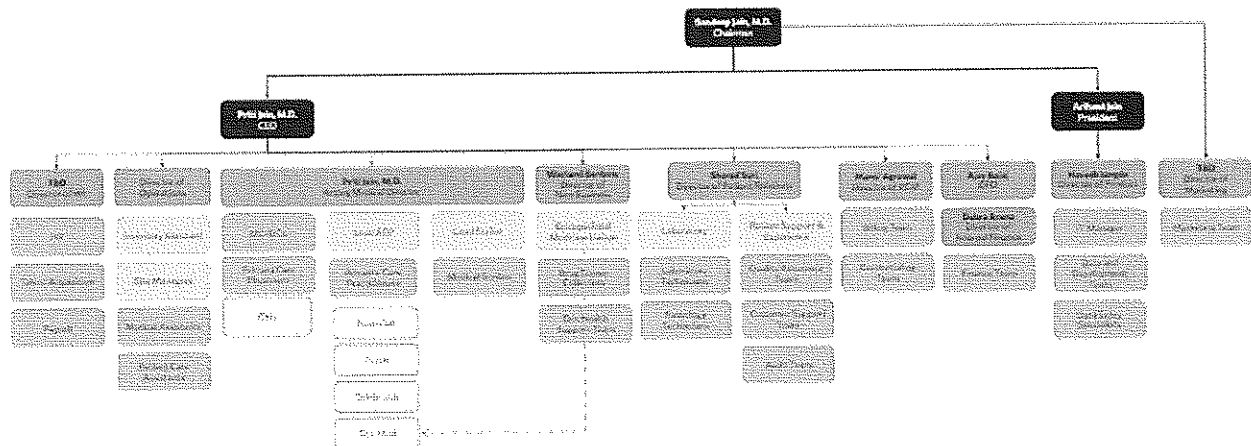
Priti Jain MD

CEO Nao Medical

516-695-7493

[occhealthgrp@naomedical.com](mailto:occhealthgrp@naomedical.com)

## Organizational Chart



nao\*medical

### ### Detailed Process Flow

## 1. Random Selection

- Nao Medical uses a secure computerized system to randomly select students scheduled for testing.
- The random selection will be supervised by two designated Oldham County Board employees to ensure impartiality.
- Full documentation of the selection process, including date/time of randomization and selection logs, is maintained for audit purposes.

## 2. Notification and Scheduling

- Following selection, authorized school officials are discreetly informed of the students selected for testing.
- Testing appointments are scheduled with minimal disruption to student educational activities.
- 24-hour minimum notice provided for scheduling on-site mobile collection units if required.

### 3. Preparation of Collection Site

- An on-site secure collection area is designated (e.g., school nurse's office or private restroom).
- Prior to specimen collection:
  - Restroom water sources are dyed to deter adulteration.
  - Collection supplies (cups, gloves, chain of custody forms) are verified.
- Same-gender monitors are assigned for supervising student specimen collections.

### 4. Specimen Collection

- Students provide urine specimens under the observation of a trained, certified collection professional.
- Students complete all necessary Chain of Custody documentation prior to providing a sample.
- Temperature strips are used immediately after collection to validate specimen authenticity.
- Chain of Custody seals are applied to specimen containers.
- Collector verifies and logs:
  - Student ID
  - Time and date of collection
  - Any unusual observations (if applicable)

### 5. Transportation to Laboratory

- Collected specimens are securely packaged according to federal guidelines.
- Specimens are transported directly to Nao Medical's partner laboratories:
  - **Quest Diagnostics, LabCorp, or Corporate Reference Laboratory (CRL)** — all SAMSHA-certified.
- Chain of Custody is maintained during all stages of transport.

### 6. Laboratory Testing

- Initial screening via **EMIT** (Enzyme-Multiplied Immunoassay Technique).
- Any positive results undergo confirmation testing via **Gas Chromatography/Mass Spectrometry (GC/MS)**.
- Split specimen protocols are observed.
- A portion of each specimen is securely stored for a minimum of **six (6) months** for potential retesting.

### 7. Result Reporting

- Negative test results are reported to the designated Board official within **48 hours**.
- Confirmed positive results are reported within **72 hours**.
- Reports are delivered **in writing only**, containing:
  - Student ID

- Collection site
- Collection and testing personnel identifiers
- Date and time of collection
- Confirmed result (including identified controlled substances if positive)
- No verbal communication of results occurs, protecting confidentiality and complying with FERPA.

## **8. Confidential Recordkeeping**

- All documentation (Chain of Custody forms, testing logs, laboratory reports) is securely stored.
- Data retention follows federal, state, and local laws.
- Access to test results is strictly limited to authorized Board officials and program administrators.

## **9. Follow-up and Support**

- In the case of positive results:
  - Medical Review Officer (MRO) engagement if required by policy (Nao Medical provides MRO services if needed).
  - Additional support or retesting options can be coordinated at the Board's request.
- Nao Medical offers consultation on next steps as needed, based on District policy.

## 9. Medical License

Priti Jain M.D (Supporting Providers & staff provided upon request)

SEE BACK FOR IMPORTANT INFORMATION

*The University of the State of New York*  
*Education Department*  
*Office of the Professions*  
**REGISTRATION CERTIFICATE**  
*Do not accept a copy of this certificate*

License Number: 235381-01

Certificate Number: 2617694

JAIN PRITI  
232 W OLD COUNTRY RD  
HICKSVILLE NY 11801-0000

is registered to practice in New York State through 02/28/2026 as a(n)  
**PHYSICIAN**

LICENSEE/REGISTRANT

*Stephen J. Boe*  
EXECUTIVE SECRETARY

COMMISSIONER OF EDUCATION

*Harah A. Benson*  
DEPUTY COMMISSIONER  
FOR THE PROFESSIONS

*This document is valid only if it has not expired, name and address are correct, it has not been tampered with and is an original - not a copy. To verify that this registration certificate is valid or for more information please visit [www.op.nysed.gov](http://www.op.nysed.gov).*

## 10. Qualifications and Client Experience

### Current Contracts

Contract Title	Agency	Current Contract Amount	Contract Start Date	Contract End Date
DRUG & ALCOHOL TESTING SERVICES	DEPARTMENT OF PROBATION	20,000.00	04/11/2024	04/11/2024
Pre-Employment Medical Examination Services	NYC TAXI AND LIMOUSINE COMMISSION	83,160.00	12/08/2023	12/08/2024
SAMHSA FORENSIC TOXICOLOGY	DEPARTMENT OF SANITATION	1,000,000.00	04/04/2024	04/03/2027
06823P0005-Drug, Alcohol, Medical and Fitness Testing	ADMINISTRATION FOR CHILDREN'S SERVICES	699,870.00	11/01/2023	10/31/2025
State-wide Drug Testing	NEW MEXICO DEPARTMENT OF HEALTH	TBD	07/01/2024	TBD
Drug Testing Statewide	NY STATE POLICE ↓	TBD	10/01/2023	TBD

## Past Contracts

Contract Title	Agency	Current Contract Amount	Contract Start Date	Contract End Date
Medical Screening Amendment #1	ADMINISTRATION FOR CHILDREN'S SERVICES	85,000.00	07/01/2022	10/31/2023
to provide the complete drug and alcohol testing	DEPARTMENT OF PARKS AND RECREATION	100,000.00	02/23/2023	02/22/2025
Pre Employment Medical Testing MWBE SP	DEPARTMENT OF PROBATION	110,000.00	11/01/2022	10/31/2023
Pre-Employment Drug and Alcohol Testing	ADMINISTRATION FOR CHILDREN'S SERVICES	250,000.00	09/01/2022	10/31/2023
Medical Screening	ADMINISTRATION FOR CHILDREN'S SERVICES	335,000.00	07/01/2022	10/31/2023
Administration of COVID-19 vaccine and seasonal	DEPARTMENT OF HEALTH AND MENTAL HYGIENE	7,500,000.00	10/01/2020	06/30/2021

A Check Global	D.O.T. physicals, drug and breath alcohol testing, w/c injury care
A&E Containers	Workers Comp and Drug Testing
A24	D.O.T. physicals, drug and breath alcohol testing, w/c injury care
ABC News	Covid Testing
ABM Aviation	D.O.T. physicals, drug and breath alcohol testing, w/c injury care
Above All Store Fronts Inc.	Covid testing & Physicals
ACS (Administration of Children's Services)	Drug screening & Physicals
Action Ambulette Inc.	D.O.T. physicals, drug and breath alcohol testing, w/c injury care
Adapthealth, LLC	TPA
Airseal Insulation Systems	D.O.T. physicals, drug and breath alcohol testing, w/c injury care
Ali Forney Center	D.O.T. physicals, drug and breath alcohol testing, w/c injury care
Align Pictures	D.O.T. physicals, drug and breath alcohol testing, w/c injury care
All American School B'us - "EMPLOYEE PAYS"	D.O.T. physicals, drug and breath alcohol testing, w/c injury care
All Foods Inc.	D.O.T. physicals, drug and breath alcohol testing, w/c injury care
Amark Express Services, Inc.	D.O.T. physicals, drug and breath alcohol testing, w/c injury care
Amazon	Drug Screening & Physicals
American Christmas	D.O.T. physicals, drug and breath alcohol testing, w/c injury care

Annex88	D.O.T. physicals, drug and breath alcohol testing, w/c injury care
Area Storage & Transfer Inc.	D.O.T. physicals, drug and breath alcohol testing, w/c injury care
Area Wide Protective ("AWP")	D.O.T. physicals, drug and breath alcohol testing, w/c injury care
Arrow Transfer & Storage Inc	D.O.T. physicals
Art Department /JS Reps Corp.	D.O.T. physicals, drug and breath alcohol testing, w/c injury care
Astoria Generating Company	D.O.T. physicals, drug and breath alcohol testing, w/c injury care
Autel	Covid testing
Auto Chlor	D.O.T. physicals, drug and breath alcohol testing, w/c injury care
AVA Companies	D.O.T. physicals, drug and breath alcohol testing, w/c injury care
BDG Media, Inc	D.O.T. physicals, drug and breath alcohol testing, w/c injury care
Bedford Stuyvesant New Charter	COVID testing
Benchmark Quality Senior Living (Orchard)	D.O.T. physicals, drug and breath alcohol testing, w/c injury care
Berkshire Farms	Drug testing and Physicals
Big Fish	Covid testing
BinderyNYC	D.O.T. physicals, drug and breath alcohol testing, w/c injury care
BioIVT	D.O.T. physicals, drug and breath alcohol testing, w/c injury care
Bodega Pictures, LLC	D.O.T. physicals, drug and breath alcohol testing, w/c injury care
BookClub	COVID testing

BookClub	D.O.T. physicals, drug and breath alcohol testing, w/c injury care
Brilliant Air LLC	D.O.T. physicals, drug and breath alcohol testing, w/c injury care
Briotix	Drug testing , physicals and breath alcohol testing
Bryght Young Things	D.O.T. physicals, drug and breath alcohol testing, w/c injury care
Canteen Vending - Compass Group	D.O.T. physicals, drug and breath alcohol testing, w/c injury care
Capri Holdings Limited	Covid Testing
Casey Creative Group	D.O.T. physicals, drug and breath alcohol testing, w/c injury care
Caso Inc.	D.O.T. physicals, drug and breath alcohol testing, w/c injury care
Centerbridge Partners, L.P.	D.O.T. physicals, drug and breath alcohol testing, w/c injury care
Central Drug System (Sony, Fox, Ohyes)	D.O.T. physicals, drug and breath alcohol testing, w/c injury care
Chavez & Sons Logistics LLC.	D.O.T. physicals, drug and breath alcohol testing, w/c injury care
Children's Aid	D.O.T. physicals, drug and breath alcohol testing, w/c injury care
Cinelease Inc.	Physicals, drug and breath alcohol testing, w/c injury care
CME CORP	D.O.T. physicals, drug and breath alcohol testing, w/c injury care
COED STUDIOS, LLC	D.O.T. physicals, drug and breath alcohol testing, w/c injury care
Commercial Concrete	D.O.T. physicals, drug and breath alcohol testing, w/c injury care
Commonwealth limo	D.O.T. physicals, drug and breath alcohol testing, w/c injury care
Concorde (BAC/COC)	D.O.T. physicals, drug and breath alcohol testing, w/c injury care
Coney Island Prep Public Charter School	Covid Testing
Continental resource	Covid Testing
Controlled Products System Group	D.O.T. physicals, drug and breath alcohol testing, w/c injury care
Corporate Health Resources	TPA
Cowan Systems LLC	D.O.T. physicals, drug and breath alcohol testing, w/c injury care
Crestwood Country Day School and Camp	D.O.T. physicals, drug and breath alcohol testing, w/c injury care
Crown Lift Trucks Inc.	D.O.T. physicals, drug and breath alcohol testing, w/c injury care
CVLT Production	D.O.T. physicals, drug and breath alcohol testing, w/c injury care
Delete Blood Cancer	D.O.T. physicals, drug and breath alcohol testing, w/c injury care
Designatronics	Fit for Duty Exam and Drug Testing
Disney/FX	Covid Testing
Distribution International	D.O.T. physicals, drug and breath alcohol testing, w/c injury care
Don Thomas Buses	D.O.T. physicals, BAT
DOODYMAN TO THE RESCUE, INC	D.O.T. physicals, drug and breath alcohol testing, w/c injury care
Dreambear, LLC	D.O.T. physicals, drug and breath alcohol testing, w/c injury care
E & M Ice Cream Inc.	D.O.T. Physicals, drug and breath alcohol testing, w/c injury care

Efficiency Enterprises	D.O.T. physicals, drug and breath alcohol testing
Electric Lady Studios	D.O.T. physicals, drug and breath alcohol testing, w/c injury care
Eminent Consulting LLC	D.O.T. physicals, drug and breath alcohol testing, w/c injury care
EMPIRE	D.O.T. physicals, drug and breath alcohol testing, w/c injury care
Encore	D.O.T. physicals, drug and breath alcohol testing, w/c injury care
Entropico	D.O.T. physicals, drug and breath alcohol testing, w/c injury care
European Granite & Marble Group, Inc.	D.O.T. physicals, drug and breath alcohol testing, w/c injury care
Eventure Production LLC	D.O.T. physicals, drug and breath alcohol testing, w/c injury care
Eversource-HR Staffing	Physicals, injury care
Facility Transports (1stchoiceamb)	D.O.T. physicals, drug and breath alcohol testing, w/c injury care
FAMAASH, Inc.	D.O.T. physicals, drug and breath alcohol testing, w/c injury care
FEDEX Ground	D.O.T. physicals, drug and breath alcohol testing, w/c injury care
Ferrari Driving School Astoria	D.O.T. physicals, drug and breath alcohol testing, w/c injury care
Ferrari Driving School Brooklyn	D.O.T. physicals, drug and breath alcohol testing, w/c injury care
First Advantage	Contractual several companies, variety of services
First Advantage	D.O.T. physicals, drug and breath alcohol testing, w/c injury care
First Student - Freeport	D.O.T. physicals, drug and breath alcohol testing
Flagship Facility Service	D.O.T. physicals, drug and breath alcohol testing, w/c injury care
Florentine Films	D.O.T. physicals, drug and breath alcohol testing, w/c injury care
Flow Traders	D.O.T. physicals, drug and breath alcohol testing, w/c injury care
Foley MRO Services	D.O.T. physicals, drug and breath alcohol testing, w/c injury care
Food Direct	Injury care
Formfox Marketplace	Drug Testing
Gentle Giant Productions	D.O.T. physicals, drug and breath alcohol testing, w/c injury care
Get It Productions	D.O.T. physicals, drug and breath alcohol testing, w/c injury care
Gibson Entertainment Services, LLC	D.O.T. physicals, drug and breath alcohol testing, w/c injury care
Golden Class Limo	D.O.T. physicals, drug and breath alcohol testing, w/c injury care
Gotham Ready Mix	Workers Comp and Drug Testing
Green Leaf Produce	Workers Comp and Drug Testing
Greenpoint Pictures	D.O.T. physicals, drug and breath alcohol testing, w/c injury care
Guardian Transportation	D.O.T. physicals, drug and breath alcohol testing, w/c injury care
Guitar Center	Covid testing
Hagan Daz E & M Ice Cream	D.O.T. physicals, drug and breath alcohol testing, w/c injury care
Half Moon Pictures	Covid Testing
Hendrickson Bus Corporation	Workers Comp and Drug Testing

Hey Baby	Covid Testing
Home Health Aid	Extensive physicals, injury care
Honor Society	Covid Testing
Horizon Health	Extensive physicals, injury care
iHeart Media	IV Infusions

Jenna Transportation	D.O.T. physicals, BAT
JJ Keller & Associates	Drug testing
JN Production	Covid testing
Johnson Brothers	D.O.T. physicals, drug and breath alcohol testing, w/c injury care
JONATHAN Y DESIGNS, INC	Covid testing
Judlau Contracting, Inc.	Covid Testing
Juice Press NYC	D.O.T. physicals, drug and breath alcohol testing, w/c injury care
Junk Luggers	D.O.T. physicals, drug and breath alcohol testing, w/c injury care
KEURIG / DR.PEPPER	D.O.T. physicals, drug and breath alcohol testing, w/c injury care
Koukla Productions, LLC - DBA FLASH RAPID TESTING	D.O.T. physicals, drug and breath alcohol testing, w/c injury care
Kozy Shack Brand	Injury care
Kozy Shack Brand (Land O' Lakes)	D.O.T. physicals, drug and breath alcohol testing, w/c injury care

Modern Marvels	Covid testing
Molloy Bros Moving and Storage	D.O.T. physicals, drug and breath alcohol testing, w/c injury care
Monadnock Construction Inc	w/c, COVID testing
Mr. Hand Truck	D.O.T. physicals, drug and breath alcohol testing, w/c injury care
National Aerospace Solutions	D.O.T. physicals, drug and breath alcohol testing, w/c injury care
NATIONAL WASTE SERVICES	Workers Comp and Drug Testing
Navitas Healthcare LLC.	Physicals, drug and breath alcohol testing, w/c injury care
Nebraskaland	D.O.T. physicals, drug and breath alcohol testing, w/c injury care
Netflix	Covid testing
New York Blood Center	D.O.T. physicals, drug and breath alcohol testing, w/c injury care
New York Foundation for Senior Citizens	D.O.T. physicals, drug and breath alcohol testing, w/c injury care
New York Housing Authority	W/C Injury care
Norwegian Cruise Line	Physicals, drug and Stool testing
Nouveau Elevator	w/c, D.O.T., Covid testing
NY Lottery	Covid testing
NYC Department of Probation (Covid Testing)	Covid testing
NYC Department of Probation (Physicals)	Physicals
Omni Bridges	COVID testing
Osmos Utilities	D.O.T. physicals, drug and breath alcohol testing, w/c injury care

Industrial Paper	Workers Comp and Drug Testing
Irish Arts Center	Covid testing
JANUARIE 1ST, INC	Covid testing
Jazz at Lincoln Center	Covid Testing

Kranky Productions	D.O.T. physicals, drug and breath alcohol testing, w/c injury care
Krystal Produce	D.O.T. physicals, drug and breath alcohol testing, w/c injury care
Land O' Lakes	D.O.T. physicals, drug and breath alcohol testing, w/c injury care
Marine Medical USA	D.O.T. physicals, drug and breath alcohol testing, w/c injury care
Markanne Transportation	Workers Comp and Drug Testing
Mary Pomilla (Multi Project Based)	D.O.T. physicals, drug and breath alcohol testing, w/c injury care
Men On The Move	D.O.T. physicals, drug and breath alcohol testing, w/c injury care
Mercy First	D.O.T. physicals, drug and breath alcohol testing, w/c injury care
Merola Tile	D.O.T. physicals, drug and breath alcohol testing, w/c injury care
Michael Kors	Covid testing
Midland Steel	Workers Comp and Drug Testing

Oyster Rides	TLC Physical
Park Pictures	D.O.T. physicals, drug and breath alcohol testing, w/c injury care
Pepsi	D.O.T. physicals, drug and breath alcohol testing, w/c injury care
Pioneer Meat	Injury care
Pitney Bowes/ Vertical Screen, Inc.	D.O.T. physicals, drug and breath alcohol testing, w/c injury care
PIX PRODUCTIONS	D.O.T. physicals, drug and breath alcohol testing, w/c injury care
PnP Automotive	Workers Comp and Drug Testing
Polsinello Fuels Inc.	D.O.T. physicals, drug and breath alcohol testing, w/c injury care
Pony Education	D.O.T. physicals, drug and breath alcohol testing, w/c injury care
Precision Environmental Inc.	Respiratory fit Testing
Precision Pipeline Solutions	D.O.T. physicals, drug and breath alcohol testing, w/c injury care
Preferred Home Care of NY	D.O.T. physicals, drug and breath alcohol testing, w/c injury care
PrimeFlight Aviation Services	D.O.T. physicals, drug and breath alcohol testing, w/c injury care
Propark America New York, LLC	D.O.T. physicals, drug and breath alcohol testing, w/c injury care
PSEG (Corporate Health Resources)	Extensive physicals, injury care, Respiratory fit test Drug testing
Pure Air	D.O.T. physicals, drug and breath alcohol testing, w/c injury care
Pure Medical Staffing (email invoice)	D.O.T. physicals, drug and breath alcohol testing, w/c injury care
Quality Metal	Workers Comp and Drug Testing
Queens and Main	D.O.T. physicals, drug and breath alcohol testing, w/c injury care

Queens Driving School	D.O.T. physicals, drug and breath alcohol testing, w/c injury care
Railroad Construction	Work injury Evaluation
Reliant Transportation	Workers Comp and Drug Testing.
Reyes-HB-Harriman-42	Drug Testing
Riverbay Corporation	Variety
Riverbay Corporation	D.O.T. physicals, drug and breath alcohol testing, w/c injury care
Robert Louis Stevenson School	COVID testing
Rochdale Early Advantage Charter School	COVID testing
RRI Personnel Solutions	Drug Testing
Scheme Engine	Covid testing
Scialli & Sons Inc.	D.O.T. physicals, drug and breath alcohol testing, w/c injury care
Scrap King	Workers Comp and Drug Testing
Segal Family Foundation	Covid Testing
Sid Wainer & Son	Drug Testing
Six West	Covid Testing
Solace Films	Covid Testing
SPX Cooling Technologies, Inc.	D.O.T. physicals, drug and breath alcohol testing, w/c injury care
Steinway & Sons	D.O.T. physicals, drug and breath alcohol testing, w/c injury care
Sterling Floor Designs	D.O.T. physicals, drug and breath alcohol testing, w/c injury care
Studio 6	D.O.T. physicals, drug and breath alcohol testing, w/c injury care
Superluminal Films	D.O.T. physicals, drug and breath alcohol testing, w/c injury care
Swissport North America	D.O.T. physicals, drug and breath alcohol testing, w/c injury care
Teq	D.O.T. physicals, drug and breath alcohol testing, w/c injury care
the American Dream School	COVID testing
The Hallen Construction Company, Inc.	D.O.T. physicals, drug and breath alcohol testing, w/c injury care
The Light	D.O.T. physicals, drug and breath alcohol testing, w/c injury care
The New York Times	Workers Comp
Times Square Church	Covid testing
Tony's Fish & Seafood Corporation	Workers Comp and Drug Testing
Total Transportation	Workers Comp and Drug Testing
Town of Hempstead	Injury care, physicals drug screens
Triad Group LLC	D.O.T. physicals, drug and breath alcohol testing, w/c injury care
TRU FILMS	D.O.T. physicals, drug and breath alcohol testing, w/c injury care
UFCW Local 464A	D.O.T. physicals, drug and breath alcohol testing, w/c injury care
Union Beer Distributors	Workers Comp and Drug Testing
Unit9	D.O.T. physicals, drug and breath alcohol testing, w/c injury care

United Ag & Turf NE	D.O.T. physicals, drug and breath alcohol testing, w/c injury care
UnitedHealth Group	Physicals
Universal Background Screening (AAA)	Physicals drug testing
UPS	D.O.T. physicals, drug and breath alcohol testing, w/c injury care
Urban Assembly Charter School	Covid Testing
V O Montalvan Fence	D.O.T. physicals, drug and breath alcohol testing, w/c injury care
Very Rare Productions	Covid testing
Vice	Covid Testing
Village Green A Carlisle Community	D.O.T. physicals, drug and breath alcohol testing, w/c injury care
VLM Productions, LLC	D.O.T. physicals, drug and breath alcohol testing, w/c injury care
W.B. Mason Company	D.O.T. physicals, drug and breath alcohol testing, w/c injury care
Walt Disney Studios	Covid Testing
Waste Management	D.O.T. physicals, drug and breath alcohol testing, w/c injury care
Water Lilies Fine Asian Cuisine	D.O.T. physicals, drug and breath alcohol testing, w/c injury care
WB Mason Company	D.O.T. physicals, drug and breath alcohol testing, w/c injury care
We are Good Company	COVID testing
Westside Foods	Workers Comp and Drug Testing
White Glove Staffing	Extensive physicals, injury care
Winter Brothers	D.O.T. physicals, drug and breath alcohol testing, w/c injury care
WW (Weight Watchers)	Covid Testing

- ☐ Vendor of Occupational Health Services agrees to release test results to a designated representative of the Oldham County Board of Education provided that the employee signs an Authorization for the Use and Disclosure of Health Information form to release information to the employer.

Name of Vendor Statcare Urgent & Walk In Medical Care PLLC dba Nao Medical

Address of Vendor 135 Mineola Boulevard, Mineola, New York, 11501

Phone number 917-310-3371\_\_\_\_\_

Representative Signature 

Date 04-26-2025