

1. Add a total of (60) Assistant Special Needs Transportation positions to support Early Childhood.

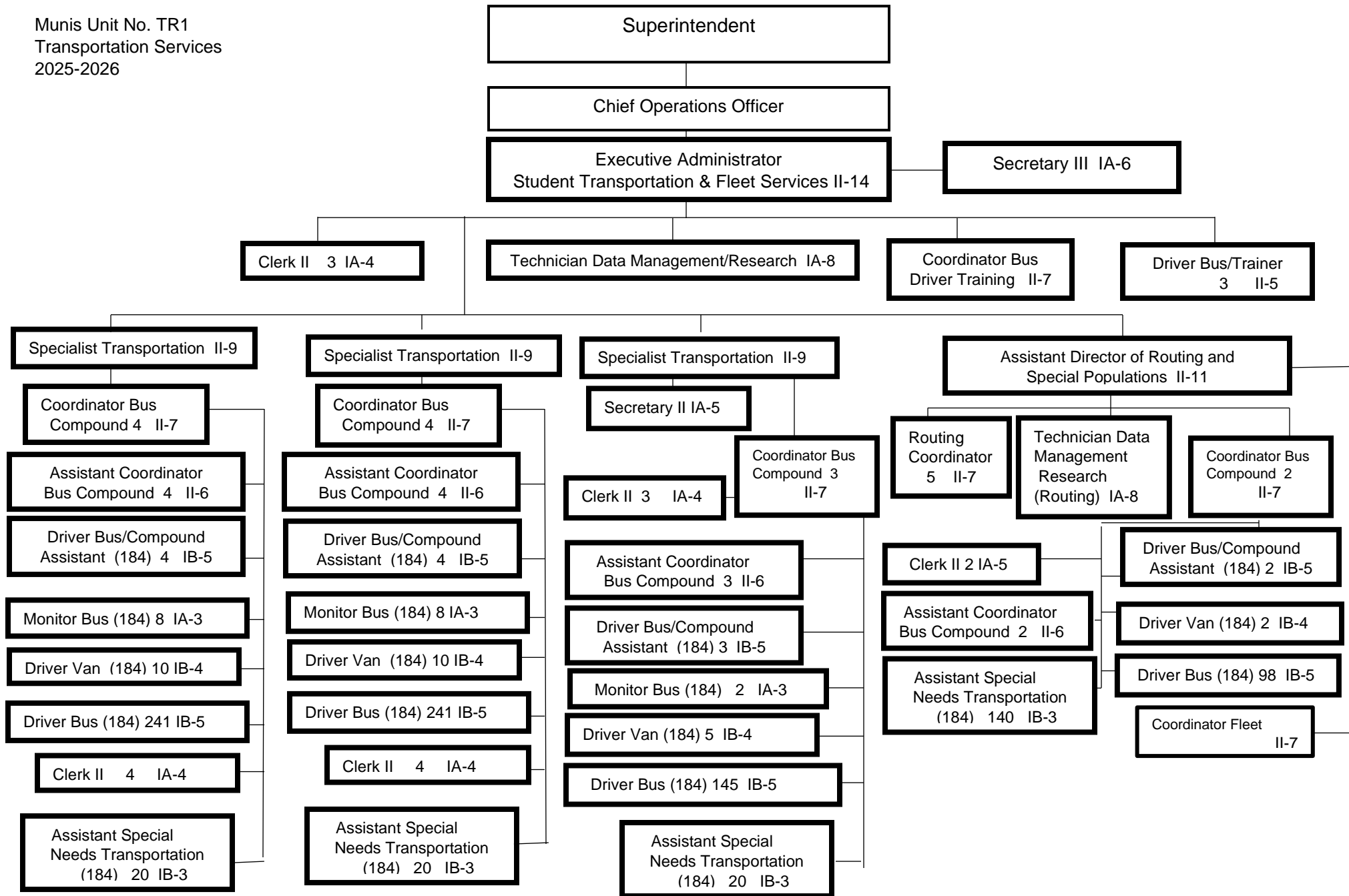
Summary:

General Fund Positions: ~~985~~ 1046

Categorical Fund Positions: 0

Submitted: ~~11/12/2024~~ 06/10/2025

Effective: ~~11/23/2024~~ 07/01/2025



Summary:
General Fund Positions: 1046
Categorical Fund Positions: 0