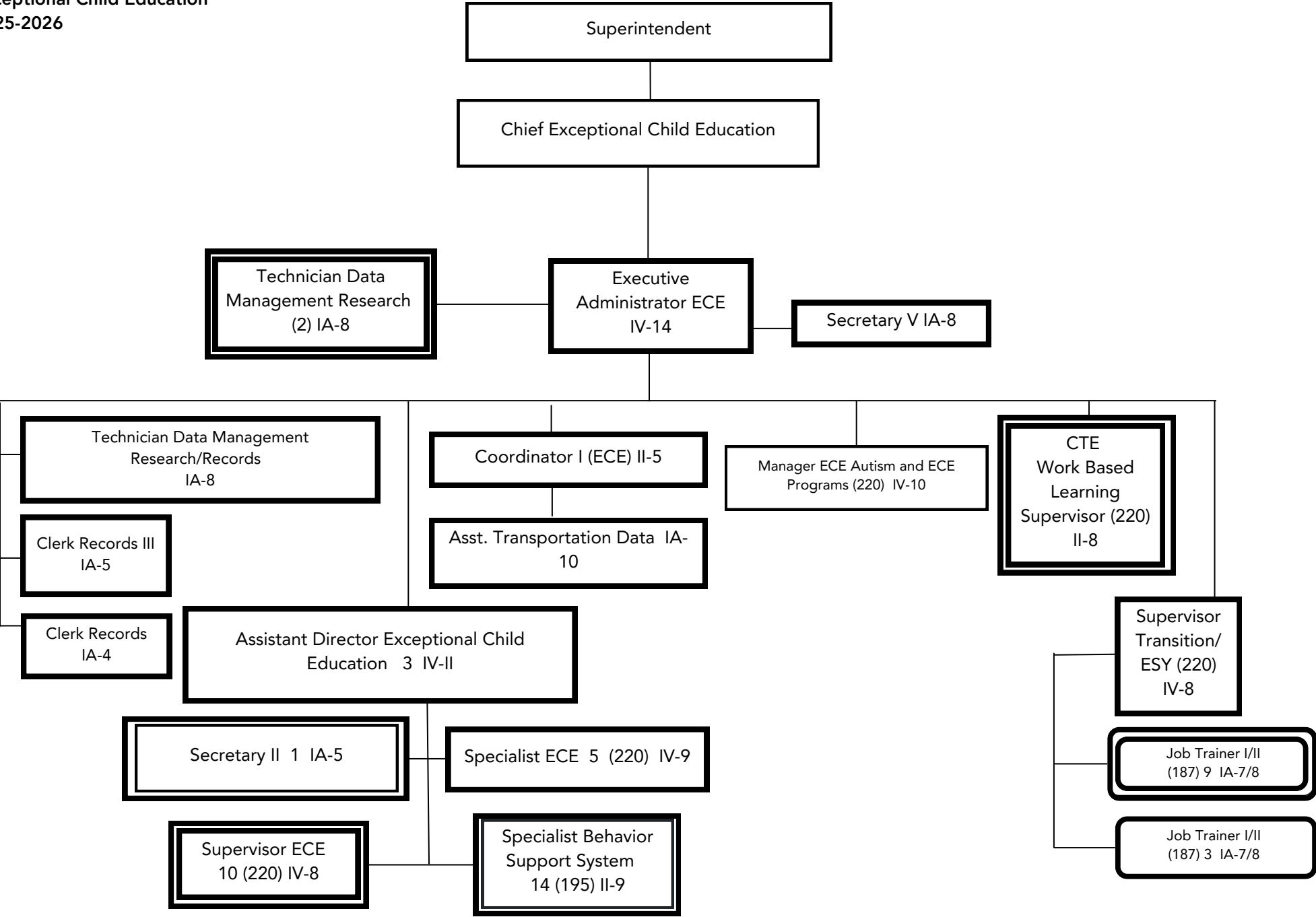


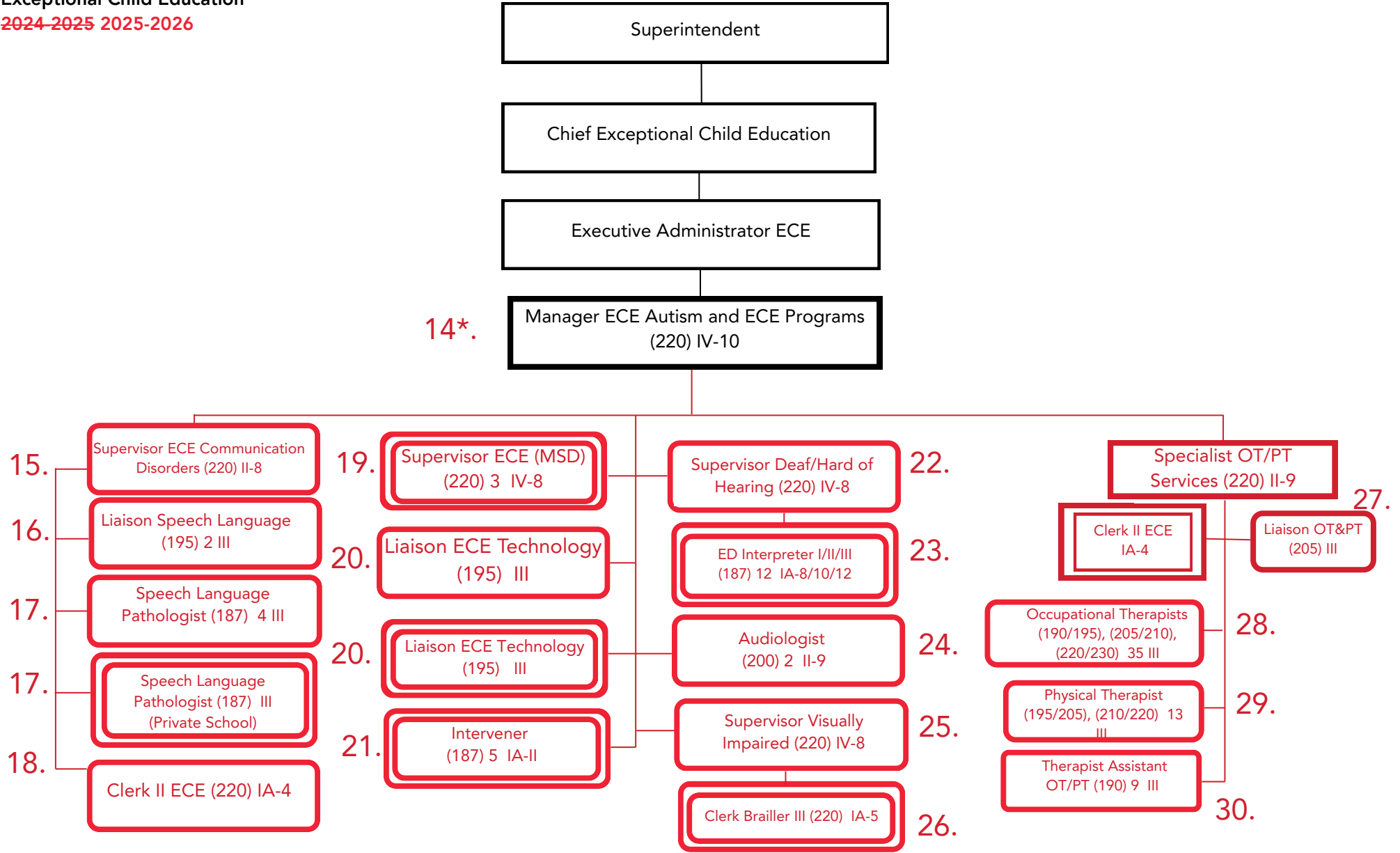
Summary:
General Fund Positions: ~~42~~ 21.5
Categorical Fund Positions: ~~5~~ 36.5

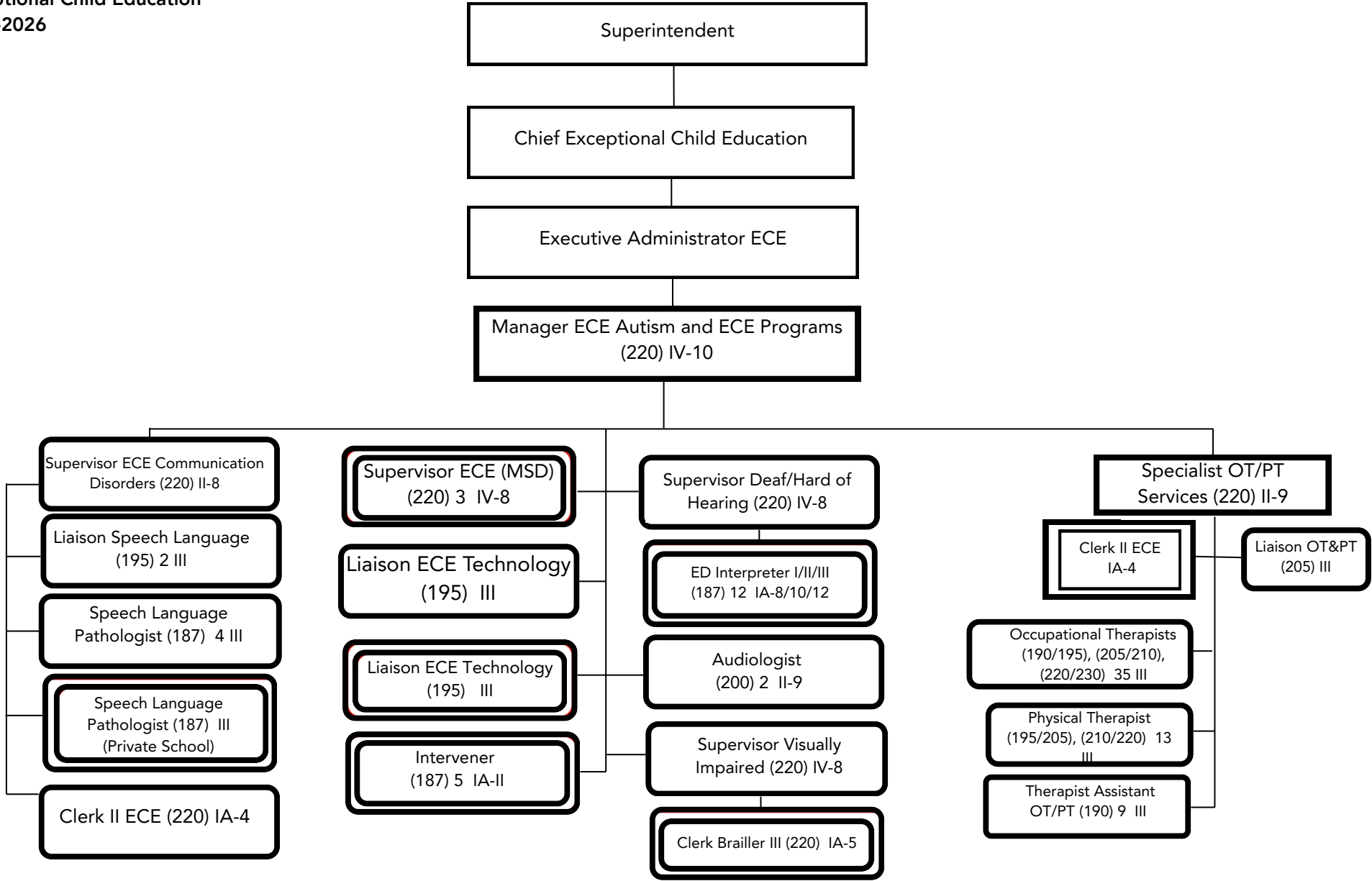
Submitted: 03/26/2024
Effective: 07/01/2024
Submitted: 05/13/2025
Effective: 07/01/2025

Narrative Executive Administrator ECE

- 2*. Change reporting relationship of Coordinator I (ECE) and Assistant Transportation from Chief ECE M-1(page 1 of 5) to Executive Admin ECE M-1 (page 2 of 5)
3. Move existing school-based DMRT to the org chart for ECE Zone Clerical Support reporting to the EAECE.; Add New DMRT to support clerical needs of the ECE Zones reporting to the EAECE.
4. Add new DMRT for Records Room
5. Add new Clerk III grade 5 to support the ECE Records Room reporting to the EAECE
6. Move existing School-Based Clerk Records to the org chart reporting to the EAECE
7. Delete (2) vacant Secretary II positions
8. Move existing (10) School-Based support Supervisor ECE to the org chart reporting to the ECE Zones.
9. Move existing (14) School-Based support Specialist Behavior Support Systems to the org chart reporting to the ECE Zones.
10. Move existing School-Based support Supervisor 504 to the org chart reporting to the EAECE.
11. Move existing School-Based support CTE/Work Based Learning Supervisor to the org chart reporting to the EAECE.
12. Move existing School-Based support Supervisor Transition/ESY to the org chart reporting to the EAECE.
13. Move existing (12) School-Based support Job Trainers for ECE Transition to the org chart reporting to the Supervisor Transition/ESY; (9) are grant funded and (3) are general fund
14. Add an additional page to the org chart for existing Manager ECE Autism and ECE Programs to move existing School-Based support positions to the org chart. See 14*. on (page 3 of 5)

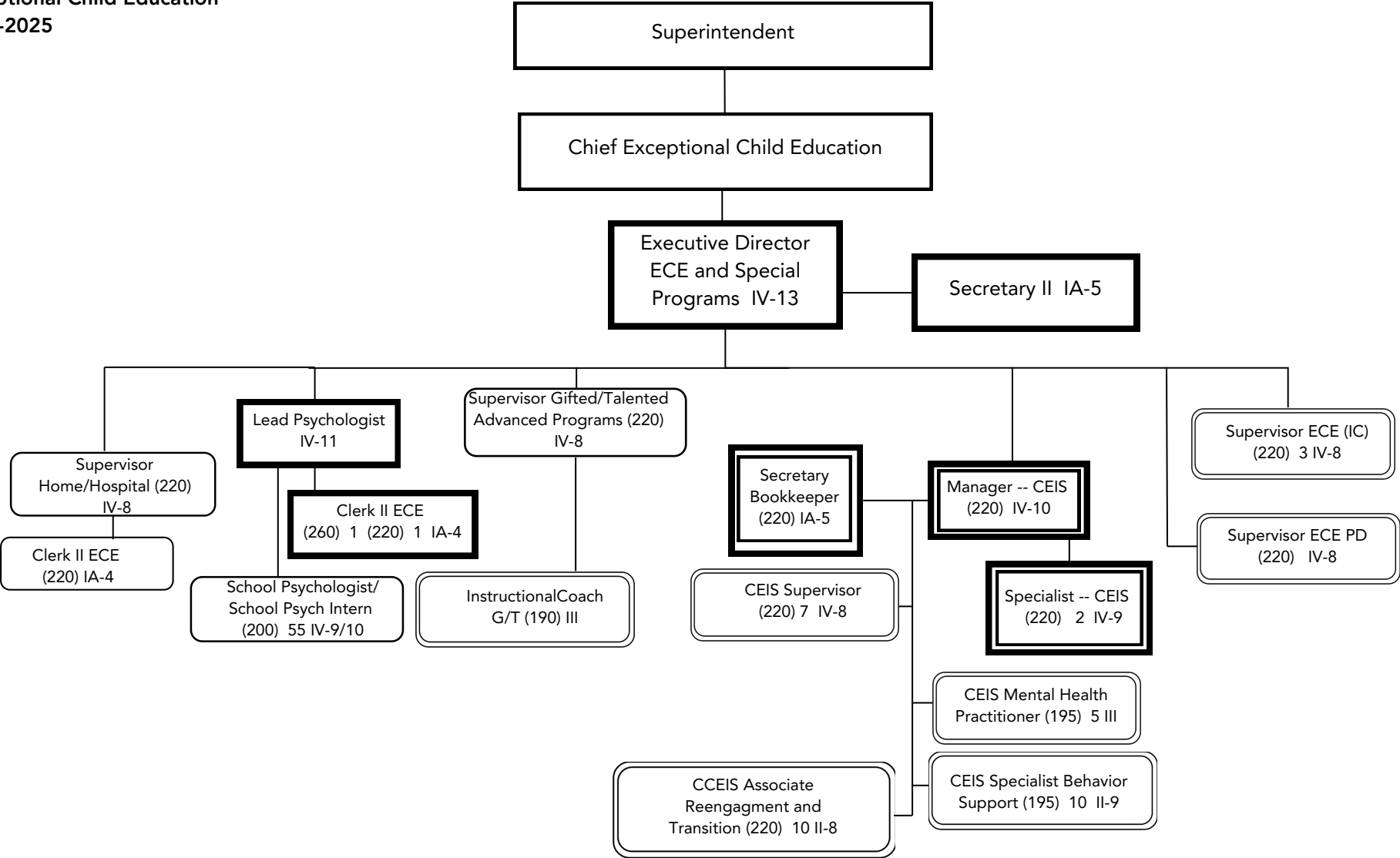


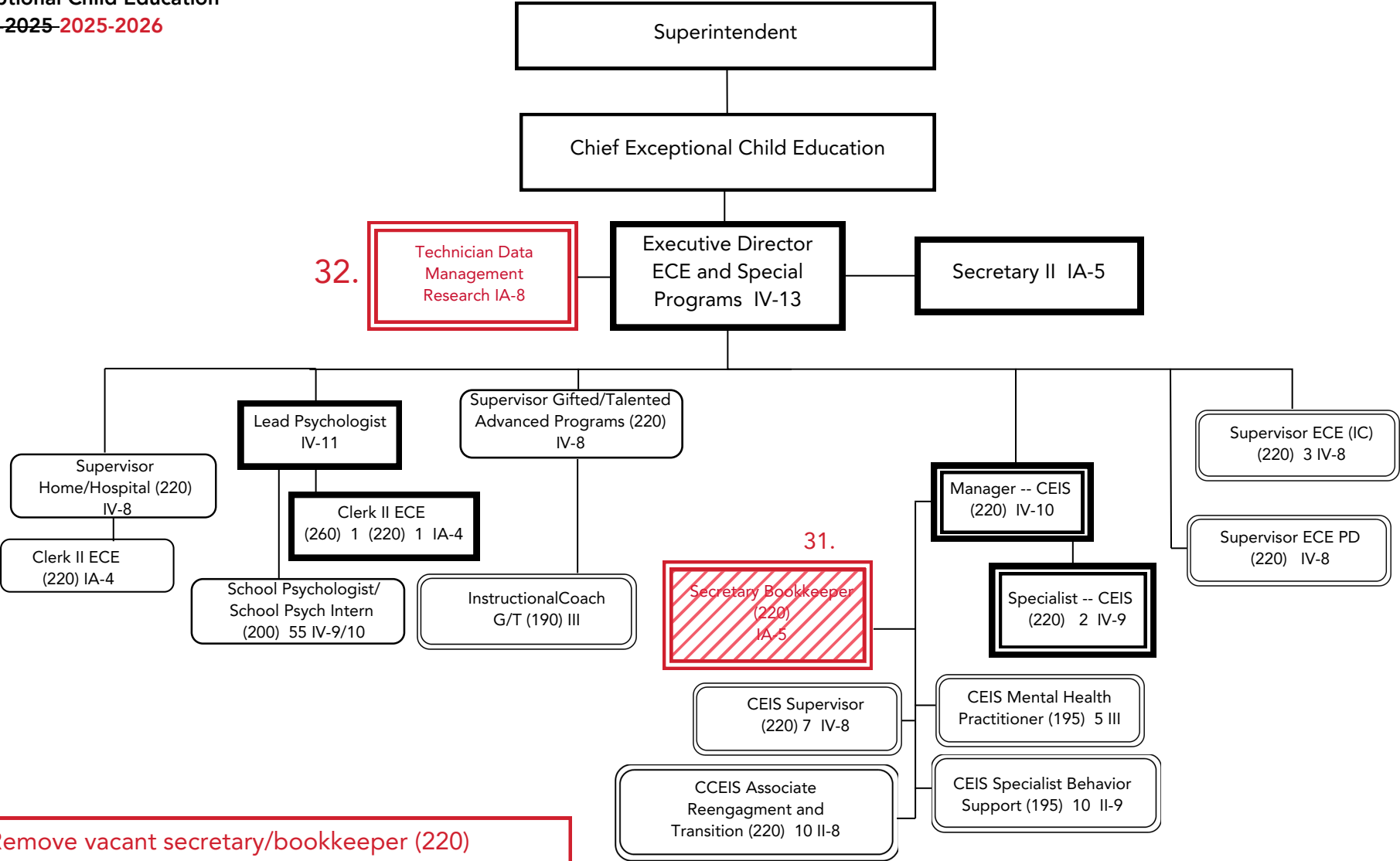




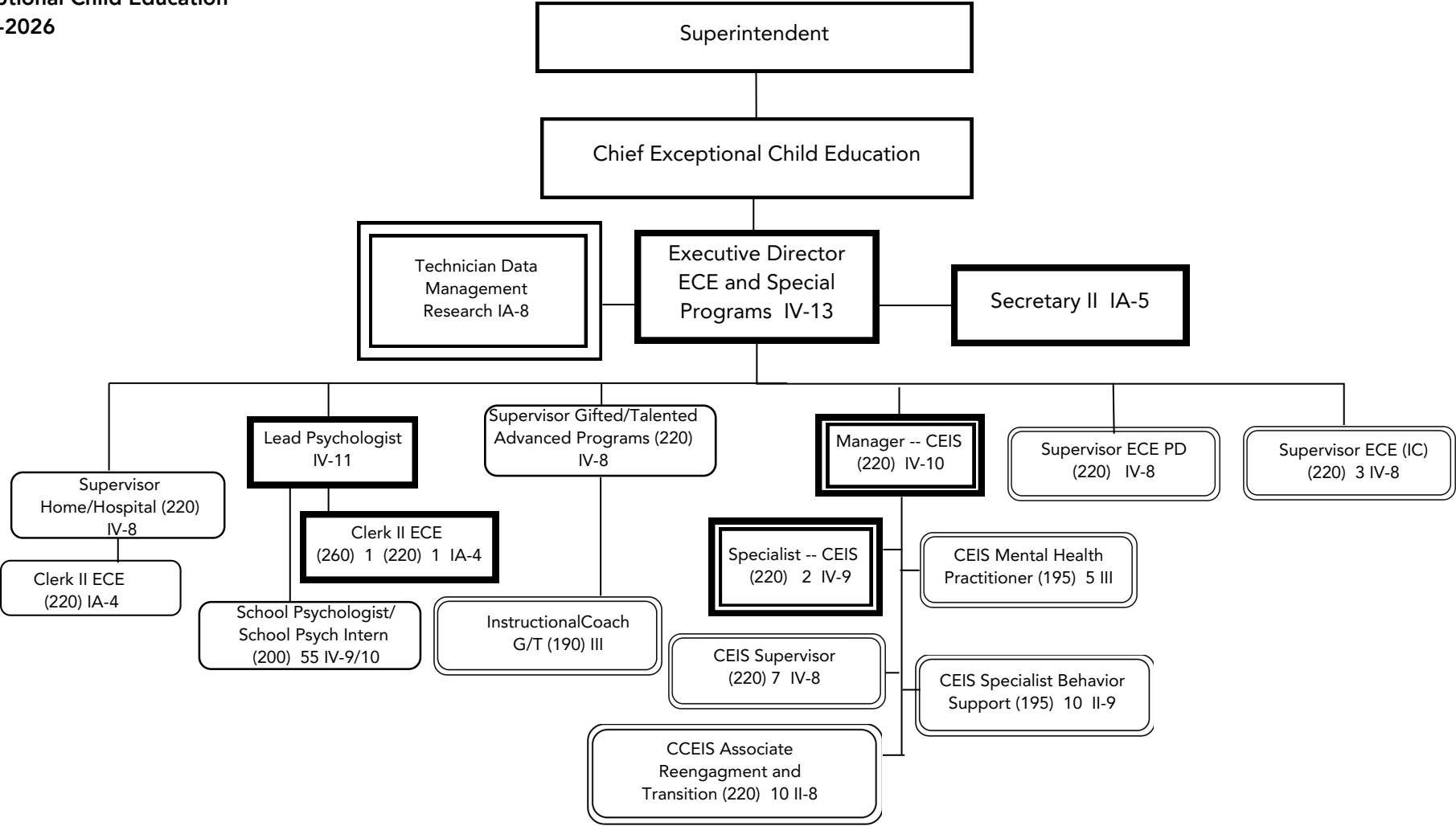
Narrative for Manager ECE Autism and ECE Programs

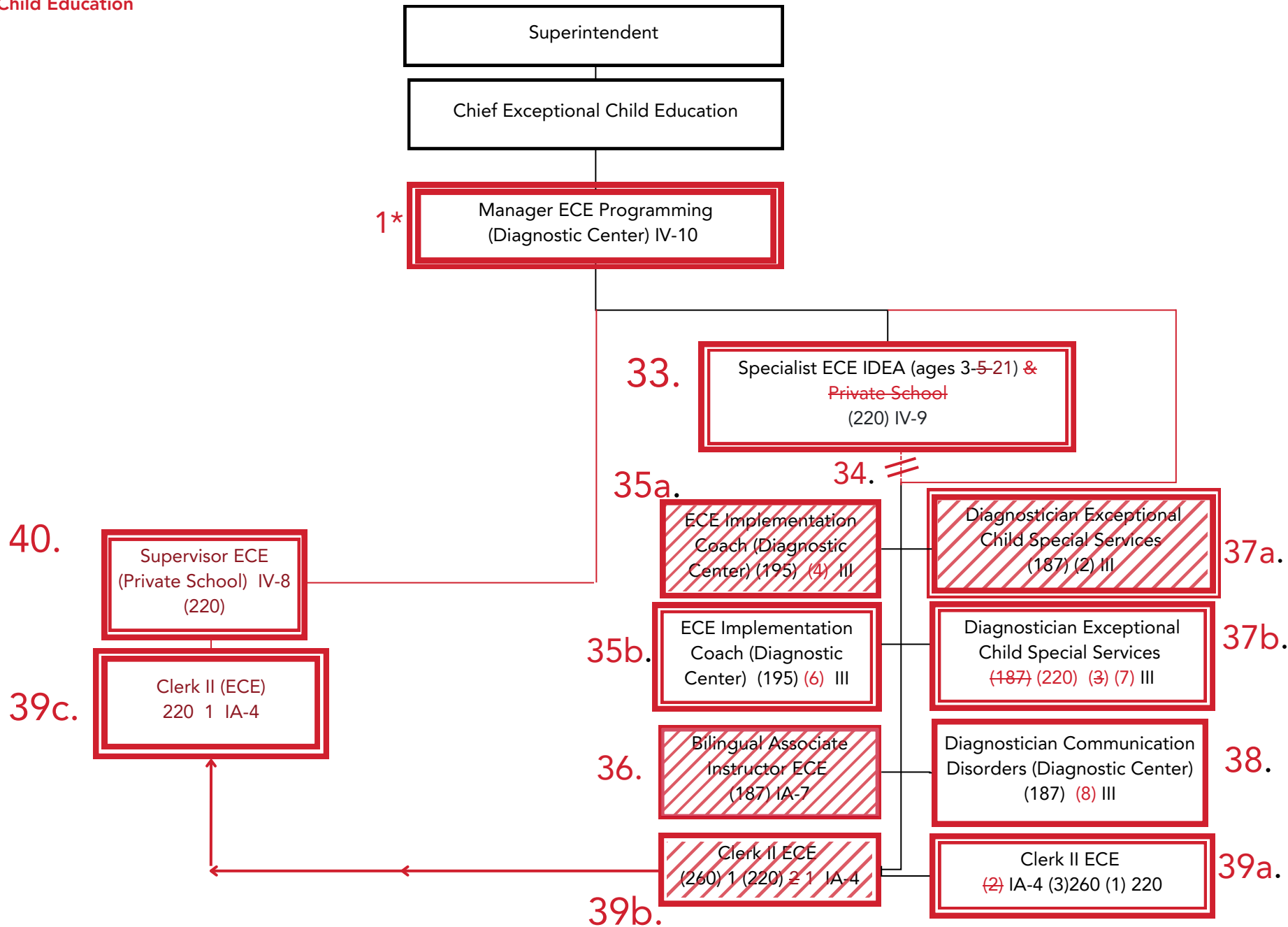
14. Add an additional page to the org chart for existing Manager ECE Autism and ECE Programs to move existing School-Based support positions to the org chart
15. Move existing School-Based support (1) Supervisor Communication Disorders to the org chart reporting to the Manager ECE Autism and ECE Programs
16. Move existing School-Based support (2) Liaison Speech Language to the org chart reporting to the Supervisor Communication Disorders
17. Move existing School-Based support (4) Speech Language Pathologist to the org chart reporting to the Supervisor Communication Disorders. Change funding source of (4) SLPs from grant to general fund (net zero impact). One grant funded SLP serving Private Schools
18. Move existing School-Based support (1) Clerk II ECE to the org chart reporting to the Manager ECE Autism and ECE Programs
19. Move existing School-Based support (3) Supervisor ECE (MSD) to the org chart reporting to the Manager ECE Autism and ECE Programs
20. Move existing School-Based support (2) Liaison ECE Technology to the org chart reporting to the Manager ECE Autism and ECE Programs. One grant funded one funded with general fund.
21. Move existing School-Based support (5) Intervener to the org chart reporting to the Manager ECE Autism and ECE Programs. Change funding of all Intervener positions to from general fund to grant funded (net zero impact).
22. Move existing School-Based support (1) Supervisor Deaf and Hard of Hearing reporting to the Manager ECE Autism and ECE Programs
23. Move existing School-Based support (12) ED (ASL) Interpreter to org chart reporting to the Supervisor Deaf and Hard of Hearing. Change funding of all ED (ASL) Interpreters from general fund to grant funded (net zero impact).
24. Move existing School-Based support (2) Audiologist to the org chart reporting to the Manager ECE Autism and ECE Programs
25. Move existing School-Based support (1) Supervisor Visually Impaired to the org chart reporting to the Manager ECE Autism and ECE Programs
26. Move existing School-Based support (1) Clerk Braille III to the org chart reporting to the Supervisor Visually Impaired
27. Change funding of (1) Liaison OT&PT from Medicaid funded to General Fund (net zero impact).
28. Move existing School-Based support (31) Occupational Therapist to the org chart; Add (4) NEW Occupational Therapists for a total of (35) reporting to Specialist OT/PT. Change funding of OTs from grant funded to general fund (net zero impact).
29. Move existing School-Based support (12) Physical Therapist to the org chart; Add (1) NEW Physical Therapist for a total of (13) reporting to the Specialist OT/PT. Change funding of PTs from grant funded to general fund (net zero impact).
30. Move existing School-Based support (9) Therapist Assistant OT/PT to the org chart reporting to the Specialist OT/PT





31. Remove vacant secretary/bookkeeper (220)
32. Add Technician Data Management Research reporting to the ED ECE and Special Programs





DIAGNOSTIC CENTER

M-1 (page 5 of 5)

- 1*. Create new Manager ECE Programming (Diagnostic Center) reporting to the Chief of ECE Page M-1 (page 1 of 5); Add new job description.
- 33. Change reporting relationship of Specialist ECE IDEA (Diagnostic Center) from EDECH (EA1 page M-3 page 1 of 2) to Manager ECE Programming (Diagnostic Center EA1 M-1 page 5 of 5); Change job title of Specialist ECE IDEA (ages 3-5) & Private School to be Specialist ECE IDEA to reflect Diagnostic Center serving ages 3-21.
- 34. Change the reporting relationship of all diagnostic center positions from Specialist ECE IDEA to Manager ECE Programming Diagnostic Center.
- 35a. Change funding source of ECE Implementation Coach (Diagnostic Center) (4) from general fund to grant funded. Combine (4) positions with positions with box labeled 35b.
- 35b. Increase grant funded ECE Implementation Coach (Diagnostic Center) to reflect a total of (6) positions of which (4) is from existing positions from 35a above plus (2) existing grant funded positions in box 35b.
- 36. Delete vacant Bilingual Associate Instructor
- 37a. Change funding source of Diagnostician Exceptional Child Special Services (2) from general fund to grant funded. Combine (2) positions with box labeled 37b. Update job description to change number of days from 187 to 220.
- 37b. Increase grant funded Diagnostician Exceptional Child Special Service to reflect a total of (7) positions of which (2) is from the existing positions marked as 37a above plus the (3) existing grant funded positions in box 37b plus the addition (2) NEW grant funded positions; Change the number of days of Diagnostician Exceptional Child Special Service from 187 days to 220 days.
- 38. Change funding source of Diagnostician Communication Disorders (Diagnostic Center) (8) from grant funded to general fund. The impact is net zero due to offsetting changes to other positions.
- 39a. Change funding source of all (5) clerks supporting Diagnostic Center from general fund to grant funded positions. The (2) in 44a. are currently funded by IDEA and Preschool grants. There are (3) clerks reflected in the box marked 39b. (2) will be combined with 39a. for a total of (4) to support the Manager ECE Programming. The remaining (1) clerk is reflected in box 39c. The clerk in box 39c. will change reporting from the Specialist ECE IDEA/Manager ECE Programming to the Supervisor ECE Private School to provide clerical support for private school.
- 40. Move existing school-based Supervisor ECE Private School position to org chart reporting to Manager ECE Programming.

