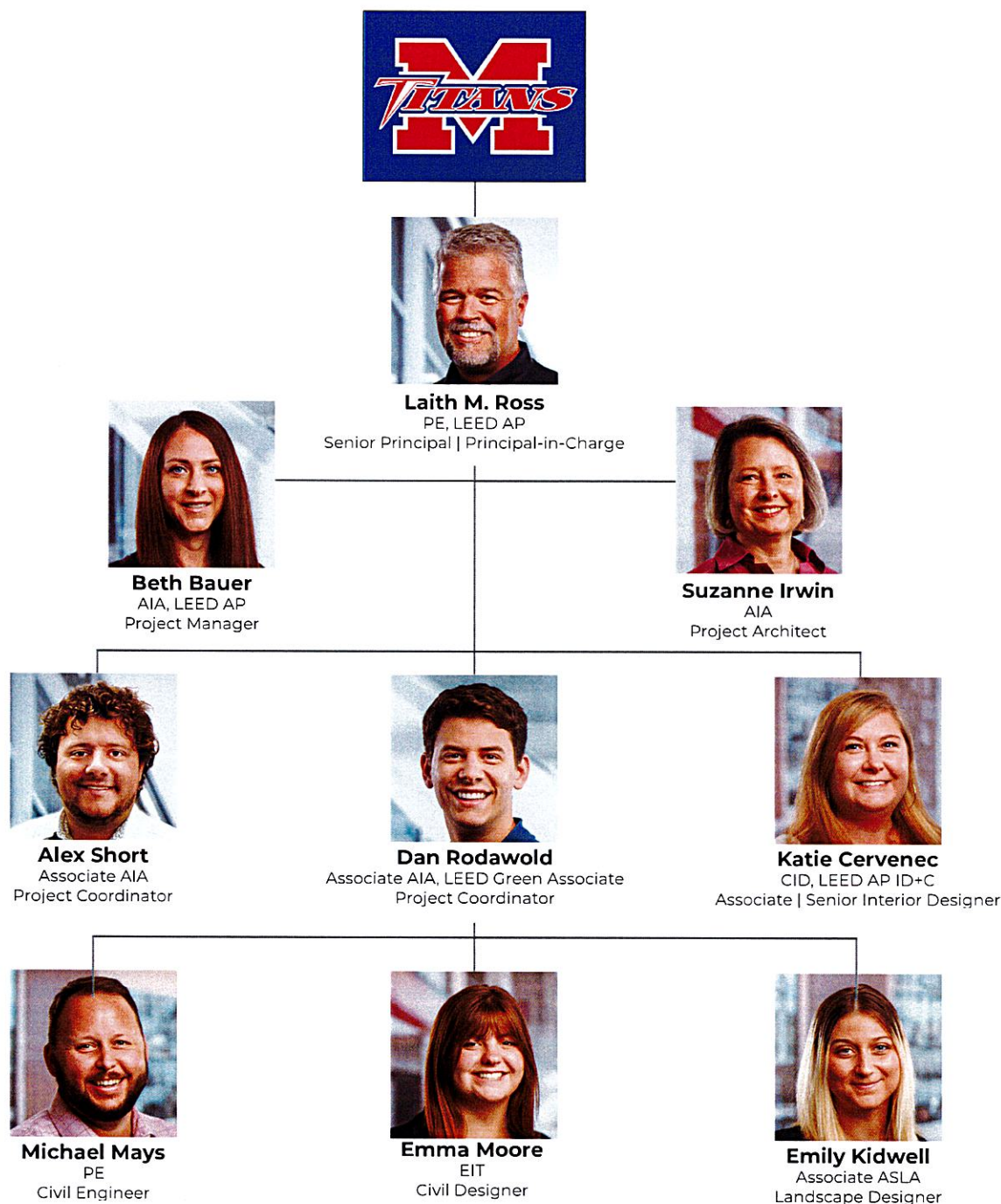


Project Organization



Team Organizational Chart



Subconsultants

As a firm dedicated to meeting our clients' goals for each individual project, we feel it is important for us to collaborate closely with you on the selection of the subconsultants on your design team.

As specialists in educational and athletic facility design for 55 years, RossTarrant Architects has worked with nearly every consultant involved in school design in Kentucky.

We would welcome the opportunity to discuss with you the strengths each potential consultant could bring to your project based on your own past experience as building owners and operators and our experience as designers and project managers.

Laith M. Ross, PE, LEED AP

Senior Principal | Principal-in-Charge | RossTarrant Architects



Education

Bachelor of Science,
Civil Engineering,
University of Tennessee

Registrations

Registered Engineer:
KY #19315
SC #23308
TN #120126
WV #23435

Professional Memberships

Synthetic Turf Council (STC), Member,
Educational Committee Chair 2015-2017;
Vice Chair 2017-2019, Board of Directors
Immediate Past Chair, 2022; Board Vice
Chair 2017-2019, Board Chair 2019-2021,
Board Immediate Past Chair 2021-2022

National Society of Professional Engineers,
Member

American Society of Civil Engineers,
Member

Kentucky Geological Engineering Group,
Member

American Sports Builder Association
(ASBA), Member

Availability

Immediately Upon Award

A Senior Principal in the firm, Laith will serve as Principal-in-Charge for this project. Laith offers over 30 years of professional experience in the design of educational and athletic facilities of varying scopes and sizes. He has extensive knowledge of new and innovative design and construction practices. Laith is known for his ability to manage large design teams to deliver successful projects completed on time and within budget.

Select Project Experience

Mercer County Elementary
School,
Mercer County Schools

Mercer County Athletic
Improvements,
Mercer County Schools

Bowling Green High School
Auxiliary Gym & Fields,
Bowling Green
Independent Schools

George Rogers Clark High
School Competition Gym &
Athletics,
Clark County Public Schools

George Rogers Clark High
School Field House &
Athletics,
Clark County Public Schools

Whitley County High School
Baseball Field House,
Whitley County Schools

Whitley County High School
Athletics Improvements,
Whitley County Schools

Pulaski County Athletic
Fields,
Pulaski County Schools

Rowan Co. Baseball & Tennis
Facility,
Rowan County Board of
Education

Kroger Field Expansion &
Renovation
University of Kentucky

Joe Craft Football Training
Center,
University of Kentucky

Kentucky Proud Park,
University of Kentucky

Nutter Field House
Renovations Study,
University of Kentucky

Lexington Christian
Academy Athletic Field
Upgrades,
Lexington Christian
Academy

LaRue County High School
Athletic Upgrades,
LaRue County Schools

Shivley Track & Field
Renovation,
University of Kentucky

Athletic Feasibility Study,
Centre College

South Oldham High School
Athletic Improvements,
Oldham County Schools

South Middle School HVAC
Renovation,
Henderson County Schools

Lewis County High School
Renovation & Athletics
Addition,
Lewis County Schools

Beth Bauer, AIA, LEED AP

Project Manager | Associate | RossTarrant Architects



With 13 years of architectural design experience, Beth will serve as Project Manager for this project. Beth offers an extensive record of successful projects completed on time and within budget. Beth's varied background in project document production and computer technology allow her to provide a unique approach to managing projects. She will collaborate with the Principal-in-Charge throughout all project phases— programming, schematic design, design development, construction documents and construction administration. Her experience allows her to provide sound technical, aesthetic and practical solutions by focusing on communication between the architect and the client.

Education

Bachelor of Architecture,
University of Kentucky

Registrations

Registered Architect: KY #7768

Professional Memberships

American Institute of Architects, Member

American Institute of Architects, EKC
Chapter Secretary; 2022

American Institute of Architects, EKC
Chapter Director; 2017, 2018

LEED Accredited Professional

Availability

Immediately Upon Award

Select Project Experience

Mercer County Elementary
School,
Mercer County Schools

Mercer County Athletic
Improvements,
Mercer County Schools

George Rogers Clark High
School Competition Gym &
Athletics,
Clark County Public Schools

George Rogers Clark High
School Field House &
Athletics,
Clark County Public Schools

Whitley County Career
Technology Center,
Whitley County Schools

Whitley County High School
Athletics Improvements,
Whitley County Schools

Whitley County High School
Physical Education Addition,
Whitley County Schools

Kroger Field Expansion &
Renovation,
University of Kentucky

South Oldham High School
Athletic Improvements,
Oldham County Schools

Oldham County Athletics
Improvements,
Oldham County Schools

Monroe County PE Training
Center,
Monroe County Schools

Harrison County High
School Renovation & Field
House,
Harrison County Schools

Gallatin Alternative School &
Field House,
Gallatin County Schools

Carroll County Athletics
Upgrades,
Carroll County Schools

Western Hills High School
Football Field House,
Franklin County Schools

Clark County Preschool
Center,
Clark County Public Schools

Burgin Independent
Schools Addition &
Renovation,
Burgin Independent
Schools

South Middle School HVAC
Renovation,
Henderson County Schools

Suzanne Irwin, AIA

Project Architect | RossTarrant Architects



As Project Architect, Suzanne's responsibilities will include coordination of all phases of design, construction document production, consultant document coordination, and electronic document organization. She will assist the project manager through all phases of the project— programming, schematic design, design development, construction documents, and construction administration.

Her meticulous attention to detail and outstanding work ethic make Suzanne an asset to each project on which she works. She is an exceptional communicator and is well accustomed to coordinating large and complex design teams to deliver an outstanding project that clearly reflects her client's goals.

Education

Master of Architecture,
University of Michigan

Master of Urban Planning,
University of Michigan

Bachelor of Arts, Architecture,
University of Tennessee

Registrations

Registered Architect:
KY #8723

Professional Memberships

Member, American Institute of Architects
Lexington Board of Architectural Review

Availability

Immediately Upon Award

Select Project Experience

Mercer County Elementary
School,
Mercer County Schools

Mercer County Athletic
Improvements,
Mercer County Schools

Bowling Green High School
Auxiliary Gym & Fields,
Bowling Green
Independent Schools

Whitley County High School
Athletics Improvements,
Whitley County Schools

Whitley County High School
PE Addition,
Whitley County Schools

Rowan County Baseball &
Tennis Facility,
Rowan County Schools

South Oldham High School
Athletic Improvements,
Oldham County Schools

Oldham County Athletics
Improvements,
Oldham County Schools

Lincoln County High School
Press Box & Athletics
Improvements,
Lincoln County Schools

Allen Field Improvements,
Morehead State University

Whitley Middle School track
Replacement,
Whitley County Schools

Anderson County Middle
School HVAC Upgrade,
Anderson County Schools

Saffell Street Elementary
School HVAC Upgrade,
Anderson County Schools

South Middle School HVAC
Renovation,
Henderson County Schools

Barbourville Independent
School Building Connection
Renovations,
Barbourville Independent
Schools

Manchester Elementary
School Renovation &
Addition,
Clay County Schools

LaRue County High School
Athletic Upgrades,
LaRue County Schools

Jessamine County Athletic
Facility Improvements,
Jessamine County Schools

Alex Short, Associate AIA

Project Coordinator | RossTarrant Architects



As Project Coordinator, Alex will coordinate all phases of design, construction document production, consultant document coordination, and electronic document organization. He will assist the project manager through all phases of the project— programming, schematic design, design development, construction documents, and construction administration.

Alex's meticulous attention to detail and outstanding work ethic make him an asset to each project he works on. He is an exceptional communicator and is accustomed to coordinating large and complex design teams to deliver an outstanding project, clearly reflecting his client's goals.

Education

Master of Arts, Architecture,
University of Kentucky
Lexington, Kentucky

Bachelor of Architecture,
UNC Charlotte
Charlotte, North Carolina

Professional Memberships

Associate, American Institute of Architects

Director,
East Kentucky Chapter, American
Institute of Architects

Availability

Immediately Upon Award

Select Project Experience

Mercer County Elementary
School,
Mercer County Schools

Mercer County Athletic
Improvements,
Mercer County Schools

Bowling Green High School
Phased Replacement,
Bowling Green Independent
Schools

Pulaski County Athletic
Fields,
Pulaski County Schools

Nutter Field House
Renovations Study,
University of Kentucky

South Oldham High School
Addition & Renovation,
Oldham County Schools

Secure Entry Vestibules,
Logan County Schools

Fleming County Schools
Facility Planning,
Fleming County Schools

Manchester Elementary
Renovation & Addition,
Clay County Schools

Clearfield Elementary
Renovation & Addition,
Rowan County Schools

Logan County Storage
Room Addition,
Logan County Schools

Murray State Campus
Capital Projects,
Murray State University

Strickland Auditorium
Renovation,
Transylvania University

Grace Doherty Library
Renovation,
Centre College

Dan Rodawold, Associate AIA, LEED Green Associate

Project Coordinator | RossTarrant Architects



Education

Bachelor of Arts, Architecture
Ball State University

Availability

Immediately Upon Award

As Project Coordinator, Dan supports the project manager through all phases of design and construction, ensuring organization and efficiency at every stage. He helps coordinate consultants, manage project documentation, and maintain clear communication to keep projects running smoothly.

Dan's proactive approach and problem-solving skills make him a valuable asset to any project team. His attention to detail and commitment to quality ensure that each project is delivered successfully and reflects the client's vision.

Select Project Experience

Mercer County Elementary School,
Mercer County Schools

Bowling Green High School
Auxiliary Gym & Fields,
Bowling Green
Independent Schools

Whitley County High School
Athletic Improvements,
Whitley County Schools

Whitley County High School
Physical Education Addition,
Whitley County Schools

South Oldham High School
Athletic Improvements,
Oldham County Schools

Logan County High School
Addition & Renovation,
Logan County Schools

Oldham County Athletic
Improvements,
Oldham County Schools

Lincoln County High School
Press Box,
Lincoln County Schools

Bowling Green High School
CTE,
Bowling Green
Independent Schools

Memorial Coliseum
Renovation,
University of Kentucky

Monroe County Schools
KFICS & DFP,
Monroe County Schools

Logan County Storage
Room Addition,
Logan County Schools

Whitley County KFICS &
DFP,
Whitley County Schools

Bowling Green
Independent Schools DFP,
Bowling Green
Independent Schools

LaRue County Schools Roof
Replacement,
LaRue County Schools

Katie Cervenec, CID, LEED AP ID+C

Associate | Senior Interior Designer | RossTarrant Architects



Education

Bachelor of Science,
Interior Design,
University of Kentucky

Professional Memberships

Certified Interior Designer
LEED Accredited Professional

Availability

Immediately Upon Award

As Senior Interior Designer for this project, Katie will support all phases of the interior design process including space planning, budgeting, preparation of graphic materials and drawing production. She will also participate in finish selections, architectural and cabinetry detailing and design of signage systems.

Katie's highly organized and creative approach to design coupled with her close attention to detail make her an outstanding asset to the project team.

Select Project Experience

Mercer County Elementary
School,
Mercer County Schools

Mercer County Athletic
Improvements,
Mercer County Schools

Bowling Green High School
Auxiliary Gym & Fields,
Bowling Green
Independent Schools

George Rogers Clark
Athletics Complex,
Clark County Schools

Whitley County High School
Athletics Improvements,
Whitley County Schools

Whitley County High School
Physical Education Addition,
Whitley County Schools

Kroger Field Renovation &
Expansion,
University of Kentucky

West Irvine Elementary
School,
Estill County Schools

East Perry Elementary (P-8),
Perry County Schools

Dishman-McGinnis
Elementary School,
Bowling Green
Independent Schools

Honors College &
International Center,
Western Kentucky
University

Gary A. Ransdell Hall,
Western Kentucky
University

Van Meter Hall Renovation,
Western Kentucky
University

Knapp Hall Renovation,
Berea College

Pleasant View Elementary
School,
Whitley County Schools

T.C. Cherry Elementary
School,
Bowling Green
Independent Schools

Music Rehearsal Hall,
Western Kentucky
University

Northern Elementary
School,
Pulaski County Schools

Residential Elementary,
Kentucky School for the
Deaf

Board Office Renovations,
Somerset Independent
Schools

Gallatin County Upper
Elementary & Middle
School,
Gallatin County Schools

Good Shepherd School,
Frankfort, Kentucky

Michael B. Mays, PE

Associate | Senior Civil Engineer | RossTarrant Architects



Education

Bachelor of Science,
Civil Engineering,
University of Kentucky

Bachelor of Science,
Biosystems & Agricultural Engineering,
University of Kentucky

Registrations

Professional Engineer: KY #31048

Professional Memberships

Member, National Society of Professional Engineers

Member, Kentucky Society of Professional Engineers

Member, Kentucky Geotechnical Engineering Group

Member, American Sport Builder Association (ASBA)

Synthetic Turf Council (STC)

Availability

Immediately Upon Award

With 16 years of experience as a Civil Engineer, Michael provides critical support to all of the firm's site design and civil engineering-related efforts. His extensive skills in document production, computer technology and storm water design expertise provide him with a wide range of talents and abilities to lend to each project on which he works. His time as a collegiate athlete at the University of Kentucky inspires his commitment to innovative athletic design.

Select Project Experience

Mercer County Elementary School,
Mercer County Schools

Mercer County Athletic Improvements,
Mercer County Schools

Mercer County DFP,
Mercer County Schools

Bowling Green High School Athletic Fields,
Bowling Green Independent Schools

George Rogers Clark High School Competition Gym & Athletics,
Clark County Public Schools

Whitley County Athletic Improvements,
Whitley County Schools

Pulaski County Football Field Improvements,
Pulaski County Schools

Rowan County Baseball & Tennis Facility,
Rowan County Board of Education

Kroger Field Expansion & Renovation,
University of Kentucky

Kentucky Proud Park,
University of Kentucky

Joe Craft Football Training Center,
University of Kentucky

Monroe County PE Training Center,
Monroe County School District

Lawrence County Athletic Upgrades,
Lawrence County Schools

Nutter Field House Renovations Study,
University of Kentucky

Greenup County High School Baseball Field Lighting,
Greenup County School District

Lewis County High School Renovation & Athletics Addition,
Lewis County Schools

Lewis County High School Track Upgrades,
Lewis County Schools

Bath County High School Renovations,
Bath County Schools

Memorial Coliseum Renovation,
University of Kentucky

Emma Moore, EIT

Civil Designer | RossTarrant Architects



Education

Bachelor of Science,
Civil Engineering,
University of Kentucky
Lexington, Kentucky

Professional Memberships

American Sports Builders Association
(ASBA)

Availability

Immediately Upon Award

As Civil Designer, Emma plays a key role in supporting all aspects of civil design, from concept development through detailed documentation. With extensive experience in CAD, she assists in drafting, producing, scaling, and quality-controlling engineering documents to ensure accuracy and efficiency.

Emma has contributed to a diverse range of projects, including master planning, site programming, and schematic design. Her positivity and creative approach to problem-solving enhance the design process, making her a valuable asset to the team.

Select Project Experience

Mercer County Elementary School, Mercer County Schools	Lawrence County Athletic Upgrades, Lawrence County Schools
Mercer County Athletic Improvements, Mercer County Schools	Lincoln County High School Field & Track Upgrades, Rowan County Schools
Bowling Green High School Phased Replacement, Bowling Green Independent Schools	Rowan County Bleacher & Press Box, Rowan County Schools
Whitley County High School Athletics Improvements, Whitley County Board of Education	Woodford County High School, Woodford County Schools
Whitley County High School Physical Education Addition, Whitley County Schools	Marion County High School Renovation & Addition, Marion County Schools
Pulaski County Football Field Improvements, Pulaski County Schools	Centre College Greenhouse, Centre College
Rowan County Baseball & Tennis Facility, Rowan County Schools	Farmington Elementary Cafeteria Addition, Graves County Board of Education
Musketeer Alumni Complex (The MAC), Greenup County Schools	Estill County Middle School Security & Plumbing Upgrades, Estill County Schools
Monroe County PE Training Center, Monroe County Schools	Clark County Preschool Center, Clark County Schools
Oldham County Athletics Improvements, Oldham County Schools	New Calvary Elementary School, Marion County Board of Education

Emily Kidwell, Associate ASLA

Landscape Designer | RossTarrant Architects



Education

Bachelor of Arts, Interior Design,
Eastern Kentucky University

Availability

Immediately Upon Award

As a Landscape Designer, Emily brings a deep passion for creating outdoor environments that are both functional and visually compelling while responding thoughtfully to their surroundings. She is a vital part of the design team throughout all phases of the design process, contributing creative solutions and technical expertise.

Emily's strong organizational skills, attention to detail, and innovative approach to design make her a valuable asset to the team, ensuring each project is both well-executed and impactful.

Select Project Experience

Mercer County Elementary
School,
Mercer County Schools

Bowling Green High School
Auxiliary Gym & Fields,
Bowling Green
Independent Schools

Whitley County High School
Baseball Field House,
Whitley County Schools

Whitley County High School
Athletics Improvements,
Whitley County Schools

Rowan Co. Baseball & Tennis
Facility,
Rowan County Board of
Education

South Oldham High School
Athletic Improvements,
Oldham County Schools

Soccer & Softball Field
Upgrades,
University of Kentucky

Shively Track Rejuvenation,
University of Kentucky

PE Training Facility,
Woodford County Schools

Athletics Masterplan,
Adair County Schools

Track & Field Improvements,
Kentucky School for the
Blind

Prestonsburg High School
Track Improvements,
Floyd County Schools

Synthetic Turf Replacement,
University of Kentucky

Fleming County
Elementary,
Fleming County Schools

Woodford County High
School,
Woodford County Schools

ATC Renovation & Addition,
Lawrence County Schools

ATC Renovation & Addition,
Bath County Schools

Cumberland County
Elementary School,
Cumberland County
Schools

Estill Springs Elementary
Renovation,
Estill County Schools

Outdoor Pavilions,
Marion County Schools

Logan County High School
Addition & Renovation,
Logan County Schools

Harrison Elementary
Preschool Addition,
Fayette County Schools



Within Budget &
On Time

Within Budget

Anticipating the cost of a project while in the early program stages is possibly one of the most difficult tasks confronting a design team. It is the Project Manager's responsibility to clearly communicate to the project team the constraints a project budget places upon a project's program and design. **Accurate project forecasting is a skill acquired through experience.** Although RossTarrant uses database cost reporting, it is the ability of the estimator, not the system, that provides accurate forecasts.

Cost control is a cooperative effort between all parties involved in a project. Although it is subject to outside market influences which we cannot always control, with appropriate monitoring by the Project Manager, we can certainly project and react accordingly, making project budgets manageable. RossTarrant Architects has a proven history of delivering successful projects to clients within budget.

On Time

Once we have determined the project program and budget, we will be able to predict a more accurate project schedule that will take design, planning and construction constraints into consideration. We will work with you to develop a milestone schedule for the project. We demonstrate a commitment to our clients to provide the resources necessary to meet each project milestone.

Our project team will commit the time and effort towards all phases of the project. The resources of the RossTarrant Architects office will be increased as design moves toward document production. Our existing workload coincides well with the schedule for this project.

RossTarrant Architects has a reputation for meeting scheduling demands, both for design and construction of a facility. We are accomplished working within tight schedules. Many of our projects must be constructed during summer months, or are closely coordinated and phased to allow occupancy during construction.

Example Projects

Bowling Green High School Phased Replacement-Phase 1 Bowling Green, Kentucky

Budget	\$22,500,000
Our Estimate	\$21,385,961
Low Bid	\$21,451,099
Estimated Construction	19 months
Actual Construction	19 months

Rowan County High School Renovations Morehead, Kentucky

Budget	\$3,439,755
Our Estimate	\$3,289,755
Low Bid	\$2,781,000
Estimated Construction	14 months
Actual Construction	14 months

LaRue County High School Athletic Upgrades Hodgenville, Kentucky

Budget	\$1,700,000
Our Estimate	\$1,700,000
Low Bid	\$1,713,000
Estimated Construction	7 months
Actual Construction	7.5 months

George Rogers Clark High School Winchester, Kentucky

Budget	\$39,000,000
Our Estimate	\$40,927,000
Low Bid	\$39,207,000
Estimated Construction	28 months
Actual Construction	28 months

Martin County High School Inez, Kentucky

Budget	\$29,000,000
Our Estimate	\$29,720,000
Low Bid	\$27,674,040
Estimated Construction	24 months
Actual Construction	24 months

Reducing Construction Costs

As a firm that is totally dedicated to designing educational facilities, RossTarrant Architects is well accustomed to working on projects with finite budgets. We will work closely with your construction team from the very beginning of your project to monitor construction costs and anticipate market influences that may affect your project. Together with your contractor, we will help you make sound decisions regarding materials and systems choices to keep your budget on track.

RossTarrant Architects has a reputation for delivering exceptionally clear and well-detailed design documents that minimize the guesswork for contractors bidding our projects. Experience has shown us that when bidders know exactly what they're bidding on, they aren't likely to pad their bids to cover potential unknowns.

As construction market volatility has impacted publicly funded projects nationwide in the wake of the pandemic, RossTarrant Architects has doubled down on our efforts to anticipate market drivers, track lead times for materials and systems, and closely monitor workforce availability. Our efforts have paid big dividends for our clients. Construction bids for both the replacement of Bowling Green High School and Woodford County High School's brand new campus have both come in below the cost of other regional high schools during the same time frame.





Construction Delivery

Construction Management Experience

When using construction management, we view the association of an architect and a construction manager as part of the team brought together in the best interests of you. The partnership spans the life of the project, beginning even during the design phase, and works closely together during construction, with the goal of completing a quality facility on time and within budget. Examples of projects that have utilized the construction management delivery method include:

New Mercer County Elementary School,
Mercer County Schools

Bowling Green High School Phased
Replacement,
Bowling Green Independent Schools

George Rogers Clark High School Competition
Gym & Athletics,
Clark County Schools

Martin County High School,
Martin County Schools

Martin County Area Technology Center,
Martin County Schools

Rowan County Multi-Purpose Facility,
Rowan County Schools

Cumberland County Elementary School
Additions & Renovations,
Cumberland County Schools

Lewis County High School Renovation &
Addition,
Lewis County Schools

Bath County High School LAVEC Renovation,
Bath County Schools

Bath County High School Miscellaneous
Renovations,
Bath County Schools

Woodford County High School,
Woodford County Schools

Lawrence County Schools LAVEC Renovation &
Addition,
Lawrence County Schools

Monroe County High School HVAC Upgrades,
Monroe County Schools

Logan County High School Addition &
Renovation,
Logan County Schools

Lewis County Middle School Renovation,
Lewis County Schools

McKell Middle School & Argillite Elementary
School Improvements,
Greenup County Schools

Anderson Middle School & Saffell Street
Elementary School HVAC Upgrades,
Anderson County Schools

Lewis County Board Office & Softball Field,
Lewis County Schools

Floyd County Bus Garage Replacement,
Floyd County Schools

Garrison Elementary School,
Lewis County Schools

Greysbranch Elementary School Multi-Purpose
Addition,
Greenup County Schools

New Fleming County Elementary,
Fleming County Schools

Tollesboro & Laurel Elementary School
Renovations,
Lewis County Schools

New Clark County Preschool Center,
Clark County Schools



Experience with KDE



KDE Experience

RossTarrant Architects is the only firm in Kentucky that is completely dedicated to designing educational facilities. We have been designing public school facilities since 1974 and have worked with 79 school districts across Kentucky to complete more than 1,000 projects. We are extremely familiar with KDE requirements, policies and procedures. We meet with KDE staff regularly to review project status and understand the role of KDE as a review and oversight agency with responsibilities as outlined in 702 KAR 4:160.

Our processes utilize KDE's Facilities Planning and Construction Application (FACPAC) electronic document system, which was launched in July 2017. We have worked extensively with the FACPAC database to submit required documentation on behalf of many of our clients.

We have also worked closely with KDE and Ameresco to master the Kentucky Facilities Inventory and Classifications System (KFICS). As the system has evolved, we have invested a lot of time and effort into getting our staff fully trained and up to speed with the system. Our staff has completed AuditPlanner training, and we have performed building assessments for many of our clients.

In our role as a member of your design team, we see ourselves as an advocate for our clients. When warranted, we will work to obtain waivers from the KDE requirements and guidelines in order to deliver the best possible facility to meet your needs.





School Funding

Understanding of Funding Sources

There are many sources of construction funding available to Kentucky school districts. As dedicated designers of educational facilities, we understand the funding sources available to Kentucky public school districts. As your architect, we will work closely with you and your fiscal agent to identify available funding sources for your specific project and allocate them as appropriate to the projects for which they are identified.

We welcome the opportunity to serve as a resource and to provide the necessary documentation and meet the procedural requirements enforced by KDE for the use of alternative funding sources.



The background image shows a gym interior with blue walls. Large white letters spelling "BIG BLUE" are mounted on the wall. In the foreground, there are rowing machines on a patterned carpet. A white rectangular box is overlaid on the upper right portion of the image.

References

Our Clients

We are very proud of our design work and our ability to meet client needs. We encourage you to contact any of our references for more information about our firm's abilities and services.

Mr. Gary Fields
Superintendent

Bowling Green Independent Schools
1211 Center Street
Bowling Green, Kentucky 42101
270.746.2300

Ms. Melinda Joseph-Dezarn
Director of Facility Design & Construction

Fayette County Board of Education
400 Springhill Drive
Lexington, Kentucky 40503
859.381.4000

Mr. Paul Mullins
Superintendent

Elizabethtown Independent Schools
219 Helm Street
Elizabethtown, Kentucky 42701
270.765.6146

Ms. Amy Thompson
Superintendent

Monroe County Schools
309 Emberton Street
Tompkinsville, Kentucky 42167
270.487.5456

Ms. Sheila Mitchell
Superintendent

Anderson County Schools
1160 Bypass North
Lawrenceburg, Kentucky 40342
502.839.3406

Dr. Kirk Biggerstaff
Superintendent

Cumberland County Schools
810 N. Main Street
Burkesville, Kentucky 42717
270.864.3377

Mr. John Siler
Superintendent

Whitley County Schools
300 Main Street
Williamsburg, Kentucky 40769
606.549.7000

Ms. Traysea Moresea
Superintendent

Greenup County Schools
45 Musketeer Drive
Greenup, Kentucky 41144
606.473.9819

Mr. Danny Atkins
Superintendent

Woodford County Schools
330 Pisgah Pike
Versailles, Kentucky 40383
859.873.1614

Mr. Larry James
Superintendent

Martin County Schools
7900 Highway 645
Inez, Kentucky 41224
606.298.3572

Matt Cook
Assistant Superintendent

Pulaski County Schools
925 N Main St
Somerset, Kentucky 42503
606.679.1123

Mr. Brent Bohannon
Director of Facilities Management

Oldham County Schools
6165 W. Hwy. 146
Crestwood, Kentucky 40014
502.241.6681

February 12, 2025

To Whom It May Concern,

I am honored to provide this letter of recommendation for Ross Tarrant Architects (RTA). Having worked with RTA across multiple districts in my roles as both a building-level administrator and superintendent, I can confidently say they are the finest architectural firm in the Commonwealth.

Throughout my career, I have partnered with RTA on a wide range of projects, from smaller-scale initiatives such as synthetic turf installations, roofing projects, safety vestibules, and central office storage additions to large-scale renovations at both middle and high schools. Regardless of the project's size or complexity, RTA has consistently demonstrated professionalism, expertise, and a commitment to excellence. They are with you at every step of the design process, valuing your input while ensuring the project is structured in a way that makes sense for the owner. Their ability to break down complex projects into manageable phases fosters clear communication and informed decision-making, all while truly listening and incorporating feedback.

What sets Ross Tarrant Architects apart is their dedication to building strong, positive relationships with the districts they serve. They are not just architects—they are true partners in our mission to create the best possible learning environments for students and staff. I have always been able to rely on their team for prompt, knowledgeable responses to any questions or concerns, knowing they are working diligently on behalf of our district.

RTA understands the critical role that the learning environment plays in student development and success. Their extensive experience in designing educational facilities is evident in their work, as they apply best practices from past projects to continuously improve and innovate. Their expertise ensures that every space they design is not only functional and efficient but also fosters student engagement and growth.

For any district seeking an architectural firm that prioritizes partnership, responsiveness, and a deep understanding of educational needs, I strongly recommend Ross Tarrant Architects. They have been, and continue to be, a trusted ally in our efforts to serve our students, staff, and community.

Sincerely,



Paul M. Mullins
Superintendent

Elizabethtown Independent Schools



P. 270-765-6146
F. 270-765-2158

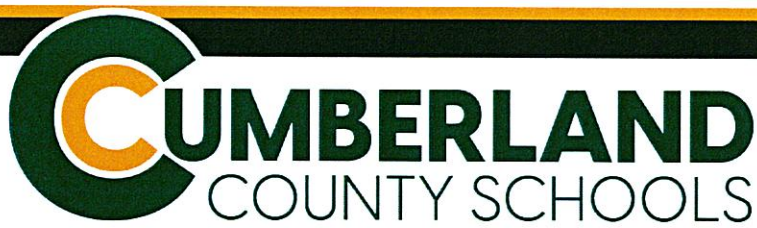


Paul.Mullins@etown.kyschools.us
website: etown.kyschools.us



219 Helm Street
Elizabethtown, KY 42701

An Equal Opportunity Employer Offering Equal Educational Opportunities



**DR. KIRK BIGGERSTAFF,
SUPERINTENDENT**

MS. DONNA THURMAN, CHAIRMAN
MRS. FAYE PHARIS, VICE-CHAIR
MRS. JACKIE BRYANT
DR. KRISTY FLOWERS WILLIAMS
DR. WILL SCOTT

To Whom It May Concern,

It is with great enthusiasm that I write this letter of recommendation for Ross Tarrant Architects. As a school district that has had the privilege of working with their team on various projects, we can confidently attest to their professionalism, expertise, and dedication to creating high-quality, innovative learning environments for students and educators alike.

From the initial planning stages to project completion, Ross Tarrant Architects demonstrated an unwavering commitment to understanding our district's needs and delivering designs that prioritize functionality, sustainability, and student-centered learning. Their ability to seamlessly blend modern educational design trends with practical solutions ensured that our facilities would not only meet current demands but also support future growth and development.

One of the most impressive aspects of working with Ross Tarrant Architects was their collaborative approach. They engaged with district leadership, faculty, staff, and community stakeholders to gather input and incorporate our vision into the final design. Their responsiveness and willingness to adapt to our evolving needs made the entire process smooth and efficient.

Additionally, their attention to detail and adherence to budget and scheduling constraints were exemplary. They worked diligently to provide cost-effective solutions without compromising quality, ensuring that our projects were completed on time and within financial parameters. Their knowledge of state and local regulations, as well as their ability to navigate complex approval processes, was invaluable in keeping our projects on track.

Thanks to Ross Tarrant Architects, our students now have access to state-of-the-art educational spaces that foster creativity, collaboration, and academic excellence. We are incredibly grateful for their outstanding work and highly recommend them to any school district seeking a knowledgeable, innovative, and dedicated architectural partner.

Please feel free to contact me if you require any further information regarding our positive experience with Ross Tarrant Architects.

Sincerely,

A handwritten signature in black ink, appearing to read 'Kirk Biggerstaff', written over a horizontal line.

Superintendent



FAYETTE COUNTY PUBLIC SCHOOLS

February 10, 2021

To Whom it May Concern:

I recently had the opportunity to work with RossTarrant Architects (RTA) on the creation of our District's Science, Technology, Engineering, Arts and Mathematics (STEAM) and Success Academies—two programs co-located under the same roof. For this project, Fayette County Public Schools tasked RTA with the challenge of transforming a former church into a new home for some of our District's most innovative educational programs, and we could not be happier with the result.

RossTarrant Architects' expertise in educational facility design was invaluable in creating this state-of-the-art facility. I appreciated their thorough and inclusive planning process at the very beginning of the project. The school principals were particularly impressed with how well they listened and responded to their needs. RTA provided creative suggestions, asked great questions, and made evidence-based recommendations that resulted in technology-rich, adaptable classrooms that support and encourage collaborative learning.

Throughout the project, I found RTA to be responsive, thorough, and attentive to detail. I could tell they were invested in the outcome of our project and I appreciated their dedication to meeting our unique goals. Every learning laboratory has direct access to cutting-edge maker spaces, breakout space and flexible multipurpose space to meet the educational needs and learning styles of individuals and groups of all sizes.

In an early phase of design, we asked RTA to expedite the project schedule to enable us to open a full semester early. They rose to the challenge, delivering construction documents several weeks ahead of the original schedule. I was impressed they were able to accommodate such a request and grateful for their partnership.

When we imagined a facility that could support these innovative programs, we never thought it would be possible to create the learning environment of our dreams in a former church building. I am deeply impressed by RTA's creative; quality design and it was truly a pleasure working with them to achieve our goals. I strongly recommend you consider RossTarrant Architects for your next project.

Sincerely,

Melinda Joseph-Dezarn

Melinda Joseph-Dezarn, AIA

Director of Facilities Design & Construction

AN EQUAL OPPORTUNITY SCHOOL DISTRICT

Board of Education: Tyler Murphy, Chair • Amy Green, Vice Chair • Tom Jones • Christy Morris • Stephanie Spires

Acting Superintendent Marlene Helm

450 Park Place, Lexington, Kentucky 40511 • Phone: 859.381.4100 • www.fcps.net



Bowling Green Independent School District

1211 Center Street, Bowling Green, Kentucky 42101

Phone 270.746.2200 ~ Fax 270.746.2205

Gary Fields, Superintendent

March 15, 2019

Letter in support of RossTarrant Architects:

On behalf of the Bowling Green Independent School District, I would like to share my thoughts on RossTarrant Architects. For over two decades, RTA has worked side-by-side with our district leadership to design and build every school in our district. Beginning with the construction of Bowling Green Junior High School in 2001, through the projects that built three new elementary schools and remolded two others, to our current project that creates a new Bowling Green High School with a two-phased construction process, RTA and their staff was by our side the entire time.

As I complete my fourth year as superintendent and 23rd in the district, I have had the opportunity to see how the architects and entire team at RossTarrant works with a school district. I appreciate that no two projects are ever the same but they approach each with an initial desire to find out what is needed, wanted, and how those desires impact the overall student experience. At the same time, they bring a sense of team work by nurturing relationships not just at the district level but with our stakeholders at the school level. Their team never hesitates to ask hard questions that need to be asked, they are never hesitant to share ideas that they have seen work in other districts, and they never say "we can't do that", but instead say "let's see how we can make that happen."

Our current project at BGHS is as difficult as they come. Design a new high school that can be built on the current high school property, in two phases, that allows us to continue to have school each day, and maintain the qualities of the campus that are most valued by our school community. Difficult yes, but not impossible once the planning and design team listened to our story. They took those ideas and now have us on track to complete phase one in early 2020 and phase two that will be completed in the years to follow.

If your district is looking to partner with an architecture firm that will be a true partner and extension of your leadership team, I would suggest you strongly consider RossTarrant and their team of outstanding professionals.

Sincerely,

Gary Fields



Summary Statement

Experience

RossTarrant Architects is the only firm in Kentucky that is exclusively committed to the design of education facilities. Our experience has given us the opportunity to work with countless teachers and school administrators and to learn from their unique experiences. Our experience has also helped us to understand how unique each school district is, and we can use that to show you various ways to meet your needs, enhance your educational program and remain flexible for changing enrollment needs.

Service

At RossTarrant Architects, we are focused on hard work and a commitment to meeting the needs of our clients. We pride ourselves on providing a higher level of service than the required standards set by the Kentucky Department of Education. We use our design expertise and creativity to help our clients improve education for their students and to solve problems with their buildings. We know that school districts always have needs to be addressed in all of their buildings, and we are ready and willing to help you with all of your needs—regardless of project size or scope. Our commitment is to you.

Quality

RossTarrant Architects has built its reputation for the last 55 years on quality educational design—quality and creative building design, quality drawings and specification documents, quality building materials and construction, sensitivity to preserving the character of historically significant buildings and sensitivity to protecting the environment. We believe that each of these principles is absolutely necessary for a building that is successful for your individual District and for the students and staff who will ultimately use and experience your facilities.

Value

The sum of Quality, Experience and Service is Value. We believe that our firm produces building designs and construction documents that are more complete and accurate than any other firm. We put more effort into clearly identifying every detail of the building so that contractors know exactly what they are bidding on and what is to be constructed. This will provide you with an attractive, well-built facility that is also cost efficient. Bids from contractors will be competitive and fewer change orders result when requirements are clearly delineated.

Our success comes through hard work, experience and the expertise of a group of dedicated professionals. Our clients have told us that attendance and test scores have increased so dramatically that they believe the creativity of the design itself inspires both students and staff to obtain higher goals. We believe that good design can enhance the education of our children, and we are committed to bringing this value to you.





Certification of Information

SUMMARY STATEMENT

Provide a summary statement, of not more than one page, which summarizes the reasons you feel your firm is best qualified for this project.

DOCUMENTS UTILIZED WITH CONTRACT

The following documents will be utilized to execute a contract based upon project delivery method.

- A. AIA Document B101-2007, Standard Form of Agreement Between Owner and Architect – KDE Version
- B. KDE Architect/Engineer Fee Guidelines for Basic Services
- C. KDE Non-Collusion Affidavit

CERTIFICATION OF INFORMATION PROVIDED

The information provided herein is accurate to the best of my knowledge and may be accepted by the recipient as a true representation of:

Firm Name: Rosstarrant Architects

Signature: 

Principal-in-Charge: Laith M. Ross, PE, LEED AP

Date: April 9, 2025



enhancing **education** through **great design**

ross ~~tarrant~~ architects