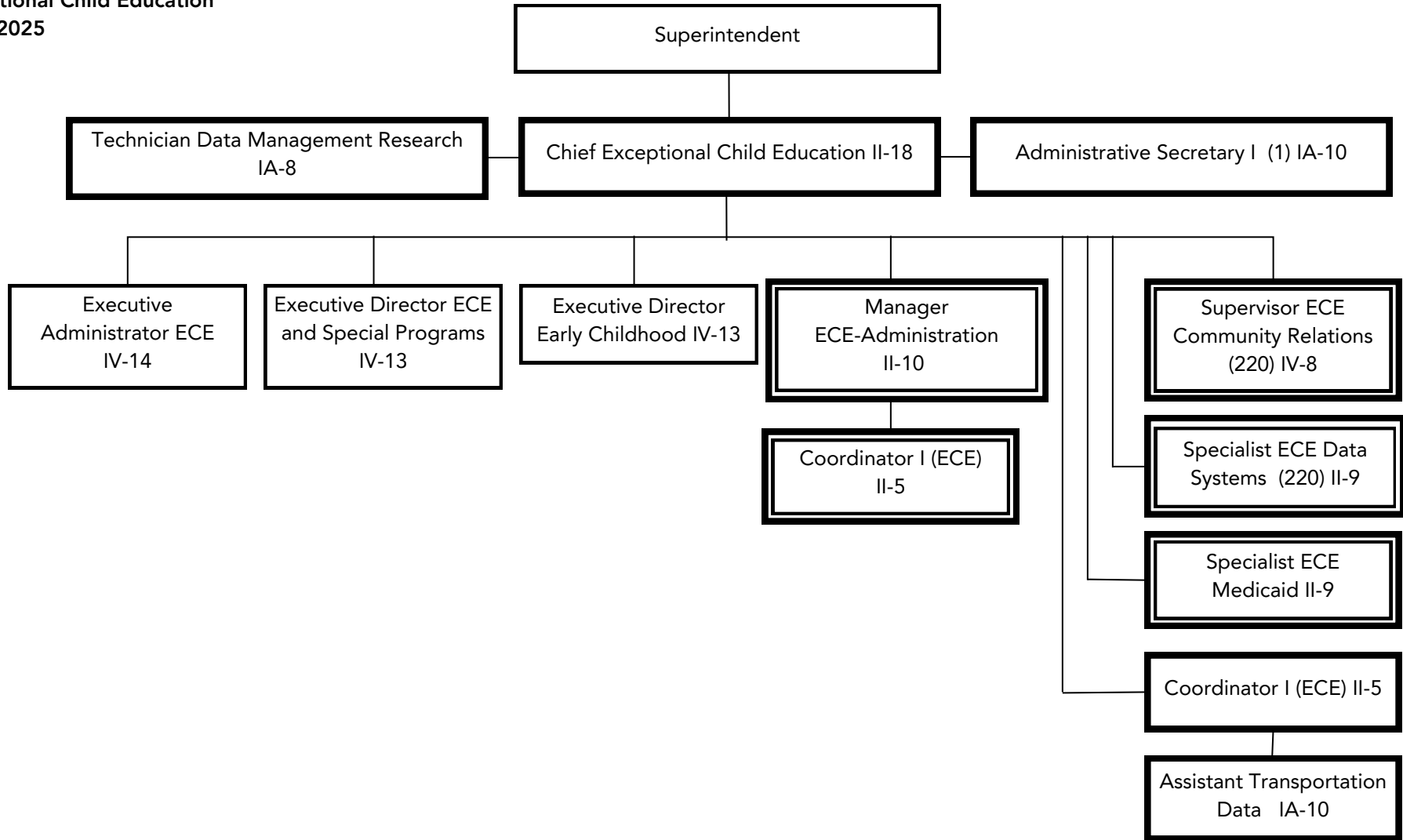
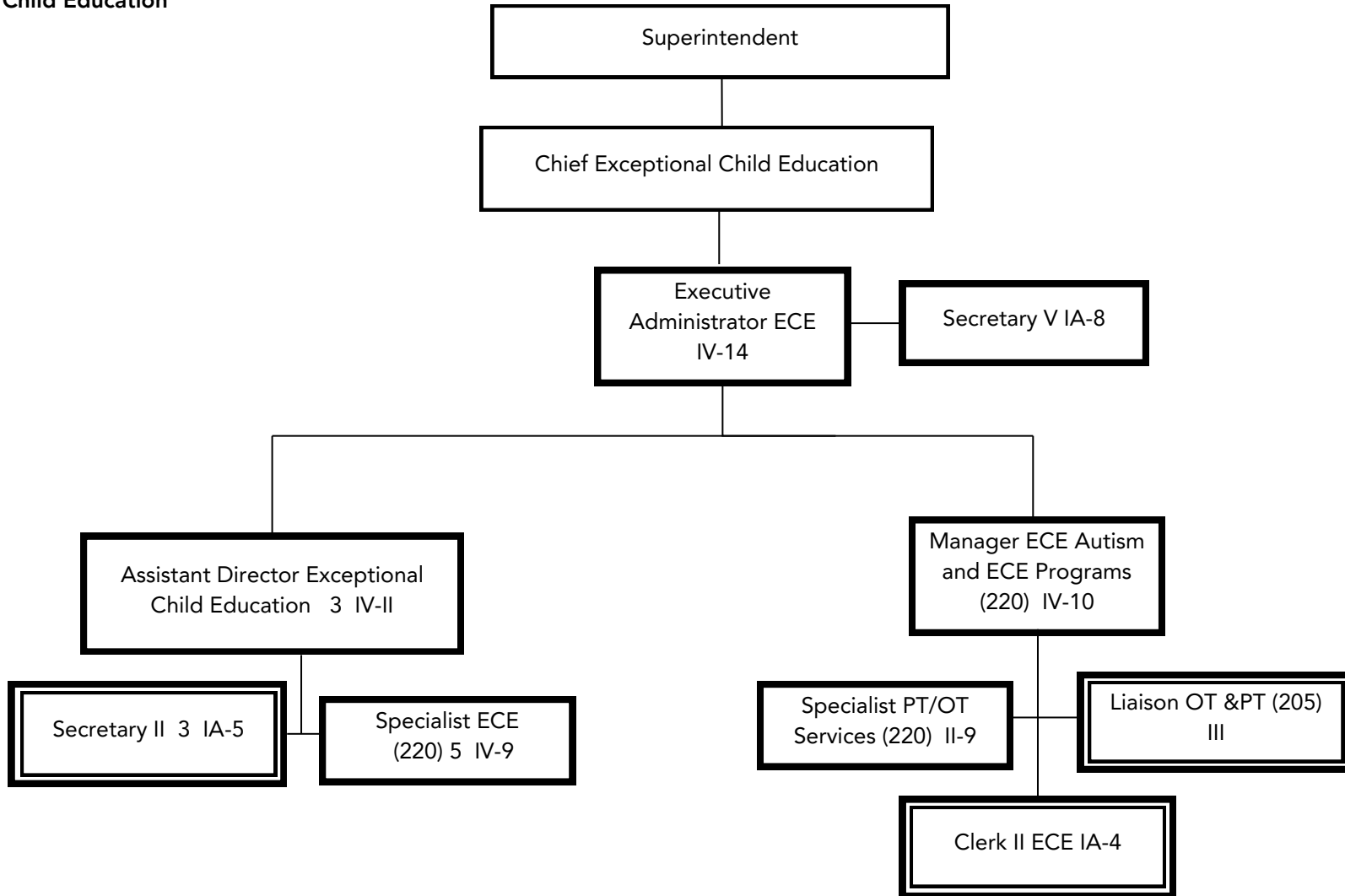


Munis Unit No. EC1
 Exceptional Child Education
 2024-2025



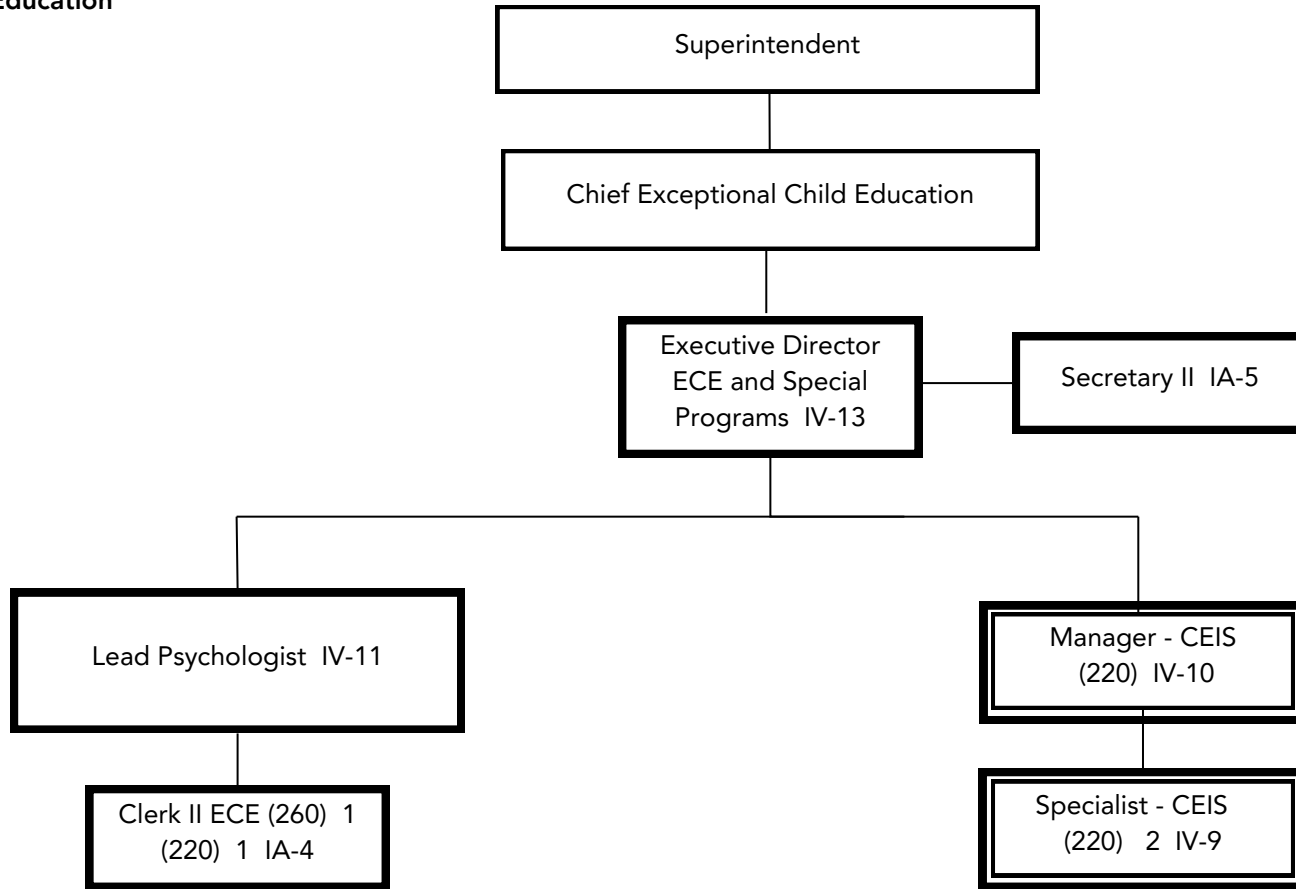
Summary:
 General Fund Positions: 5
 Categorical Fund Positions: 5



Summary:

General Fund Positions: 12

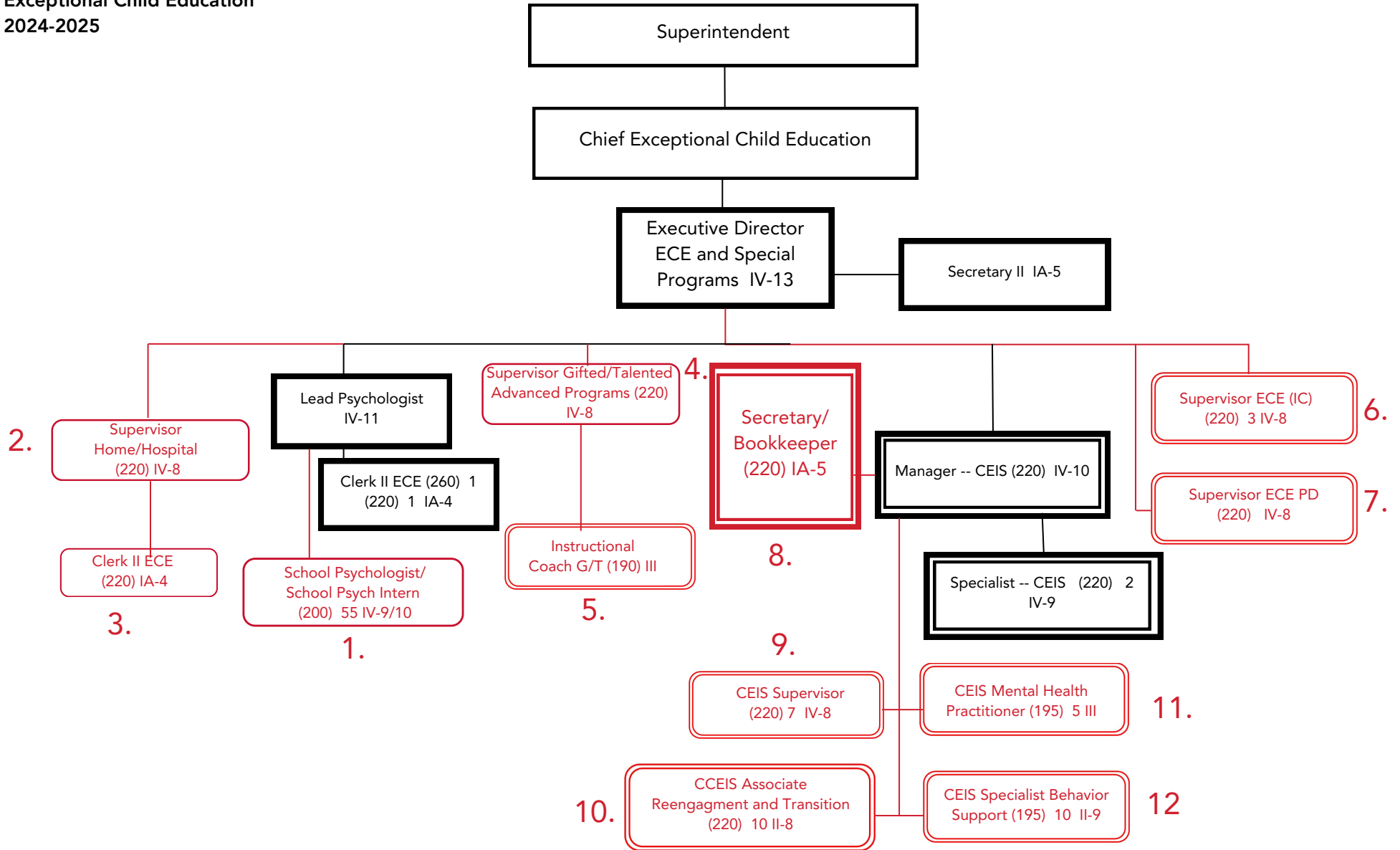
Categorical Fund Positions: 5



Summary:

General Fund Positions: 5

Categorical Fund Positions: 3



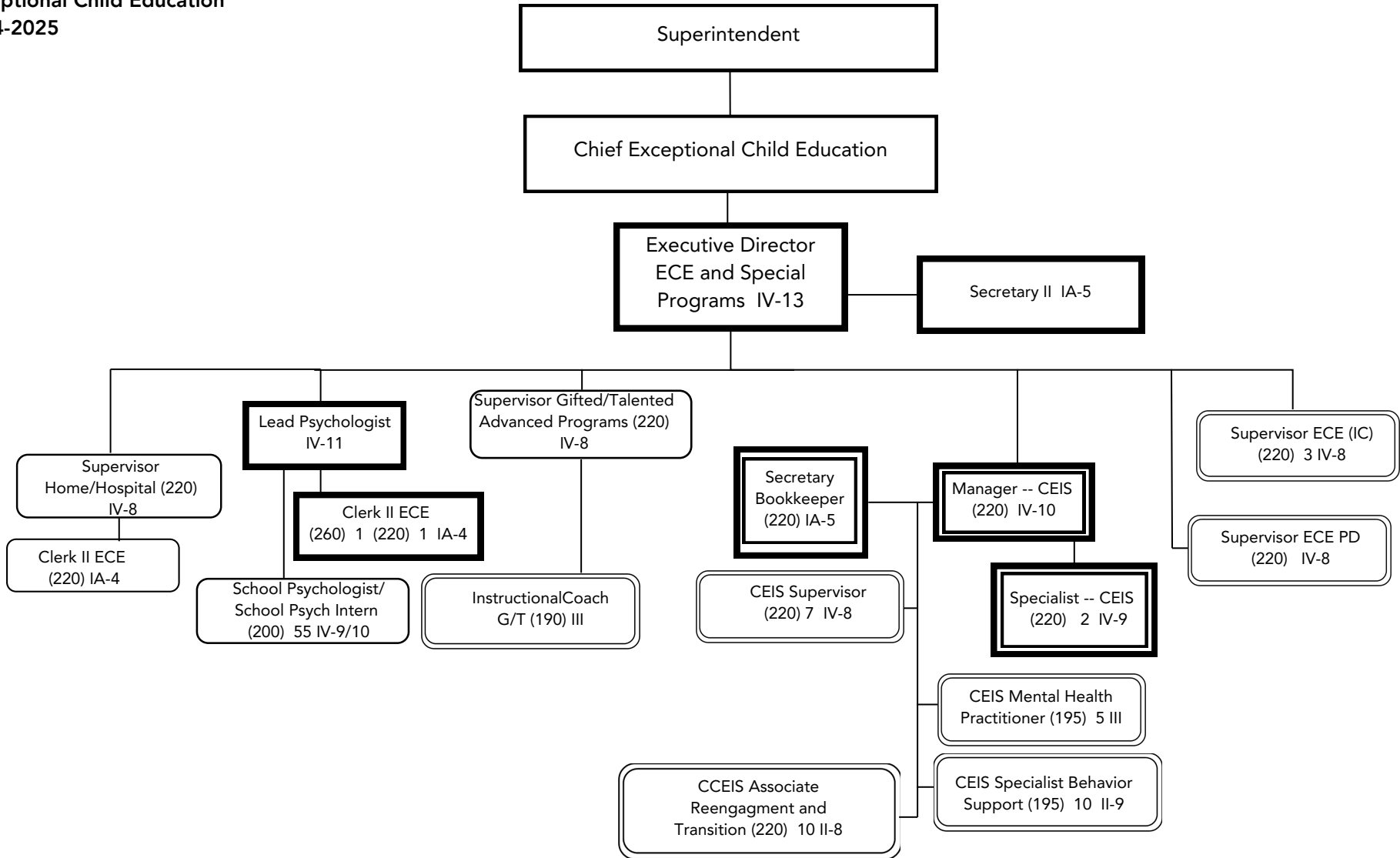
Summary:
 General Fund Positions: 5 58.5
 Categorical Fund Positions: 3 45.5

Submitted: 04/08/2025
 Effective: 04/09/2025
 Submitted: 03/26/2024
 Effective: 07/01/2024

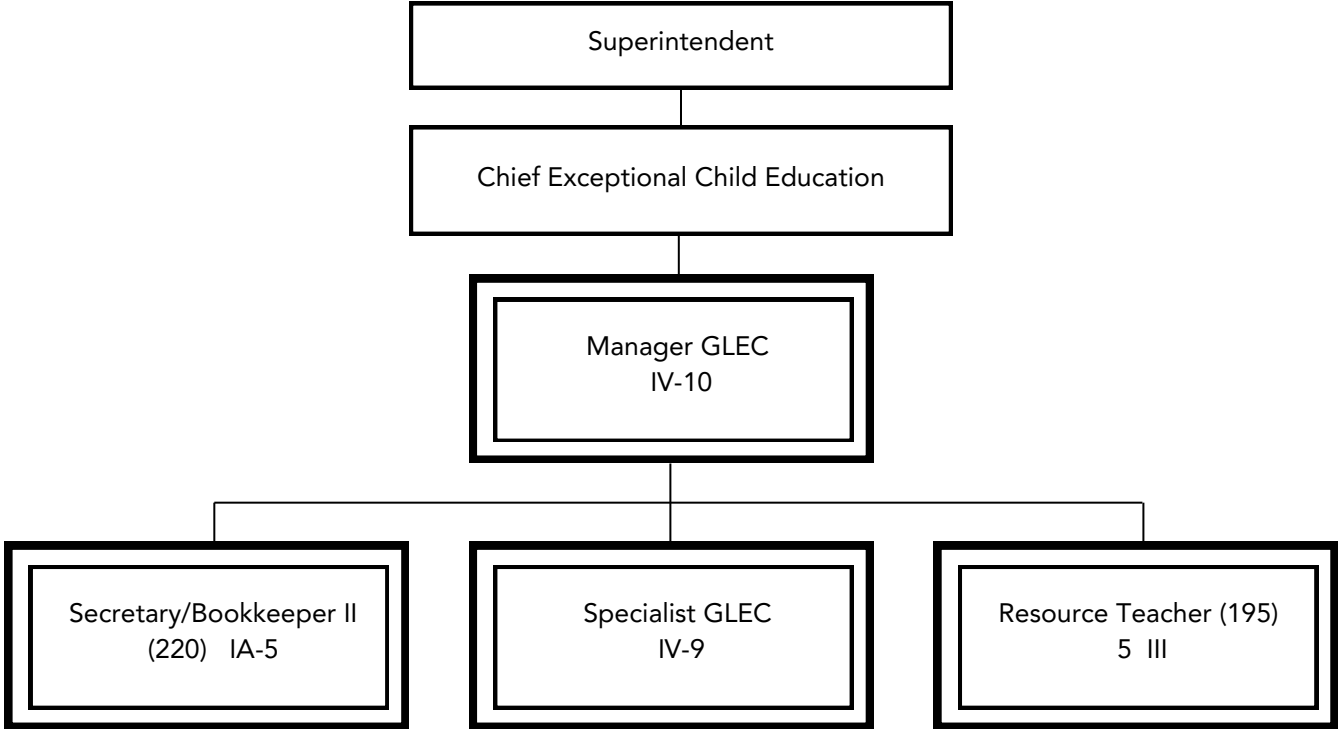
Narrative Executive Director ECE and Special Programs

M-1 (page 3 of 3)

1. Move existing School-Based Support (55) School Psychologist to the org chart; Add School Psychologist Intern position as an option to fill vacant Psychologist; All positions will report to the Lead Psychologist
2. Move existing School-Based Support (1) Supervisor Home/Hospital to the org chart reporting to the Executive Director ECE and Special Programs
3. Move existing School-Based Support (1) Clerk II ECE to the org chart reporting to the Supervisor Home/Hospital
4. Move existing School-Based Support (1) Supervisor Gifted & Talented to the org chart reporting to the Executive Director ECE and Special Programs
5. Move existing School-Based Support (1) Instructional Coach – Gifted and Talented to the org chart reporting to the Supervisor Gifted & Talented
6. Move existing School-Based Support (3) Supervisor ECE Implementation Coach to the org chart reporting to the Executive Director ECE and Special Programs
7. Move existing School-Based Support (1) Supervisor ECE Professional Development to the org chart reporting to the Executive Director ECE and Special Programs
8. Move existing School-Based Support (1) Secretary/Bookkeeper to the org chart reporting to the Manager CEIS
9. Move existing School-Based Support (7) CEIS Supervisor to the org chart reporting to the Manager CEIS
10. Move existing School-Based Support (10) Associate Reengagement & Transition to the org chart reporting to the Manager CEIS
11. Move existing School-Based Support (5) CEIS Mental Health Practitioner to the org chart reporting to the Manager CEIS
12. Move existing School-Based Support (10) CEIS Specialist Behavior Support to the org chart reporting to the Manager CEIS

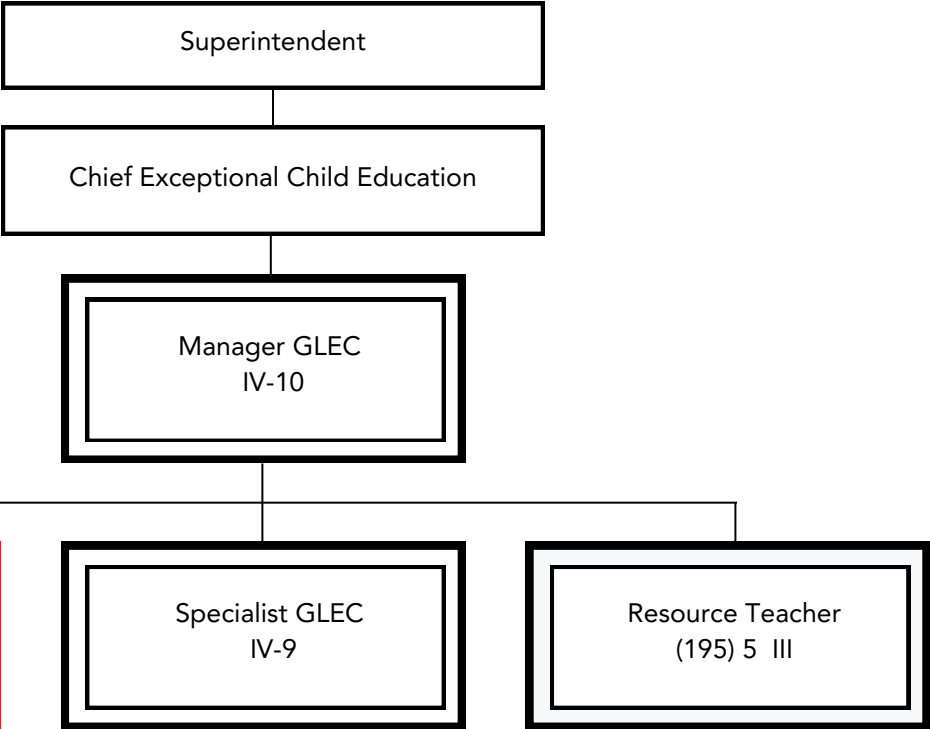


Summary:
 General Fund Positions: 70.5
 Categorical Fund Positions: 53.5

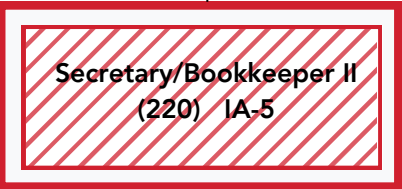


Summary:

General Fund Positions: 0
Categorical Fund Positions: 8



1.

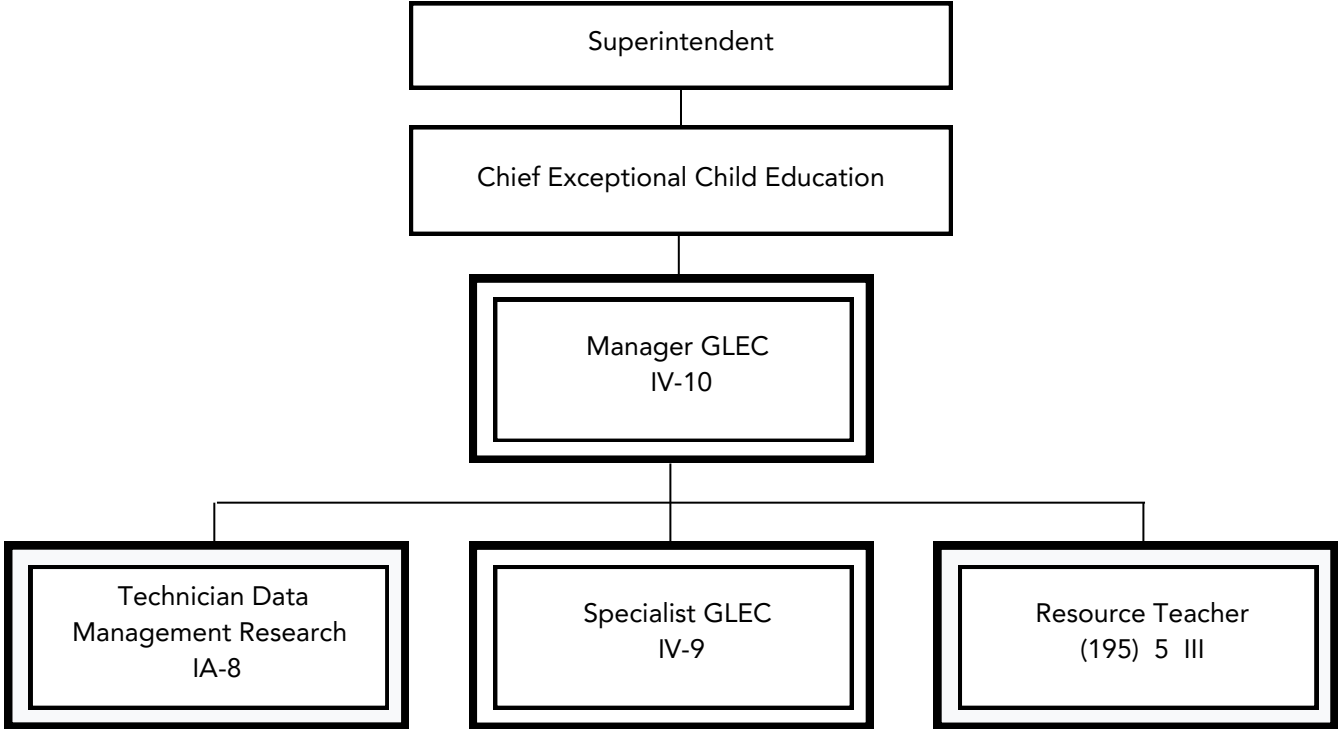


2.



- 1. Delete vacant Secretary/Bookkeeper
- 2. Add Technician Data Management Research

Summary:
General Fund Positions: 0
Categorical Fund Positions: 8



Summary:

General Fund Positions: 0
Categorical Fund Positions: 8