



**Student Assignment Recommendations for SY2526**



# BOUNDARY CHANGES

Prioritizing Least Disruptive Options for Most Over-Utilized Schools & Clusters



# Addressing Overutilization | Ramsey Middle School

- Ramsey Middle is overutilized, projected to be further over-utilized in 25-26.
- The area immediately surrounding Wheeler Elementary would move from Ramsey Middle to Carrithers Middle.

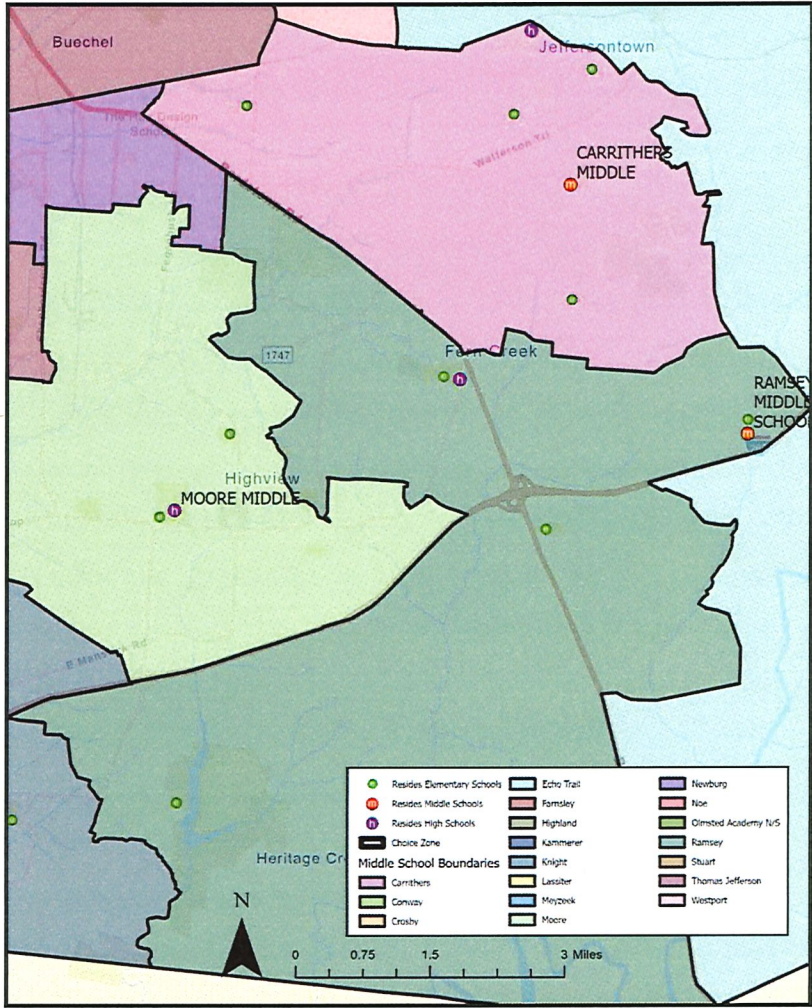
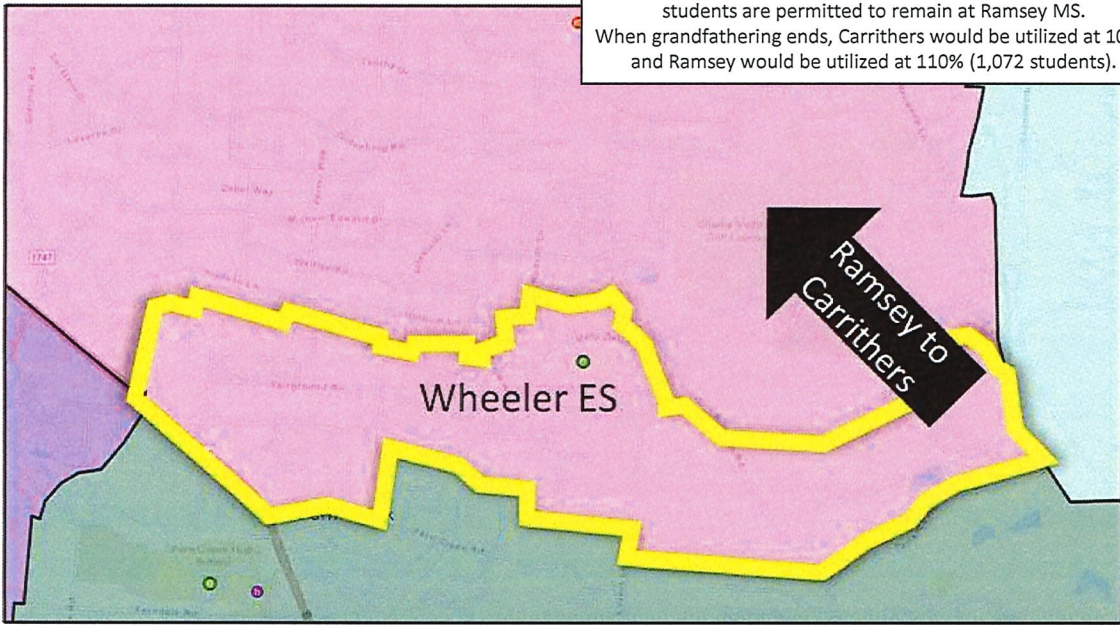
Current Utilizations

Boundary	Cluster/ School Capacity	Enrollments		
		Suburban Resides Enrollment	Estimated Choice Zone Resides Enrollment	Cluster/ School Utilization
Carrithers	690	607	0	88%
Ramsey	974	1,130	30	119%

\*With Boundary Change:

Boundary	Cluster/ School Capacity	Enrollments		
		Suburban Resides Enrollment	Estimated Choice Zone Resides Enrollment	Cluster/ School Utilization
Carrithers	690	622	0	90%
Ramsey	974	1,115	30	118%

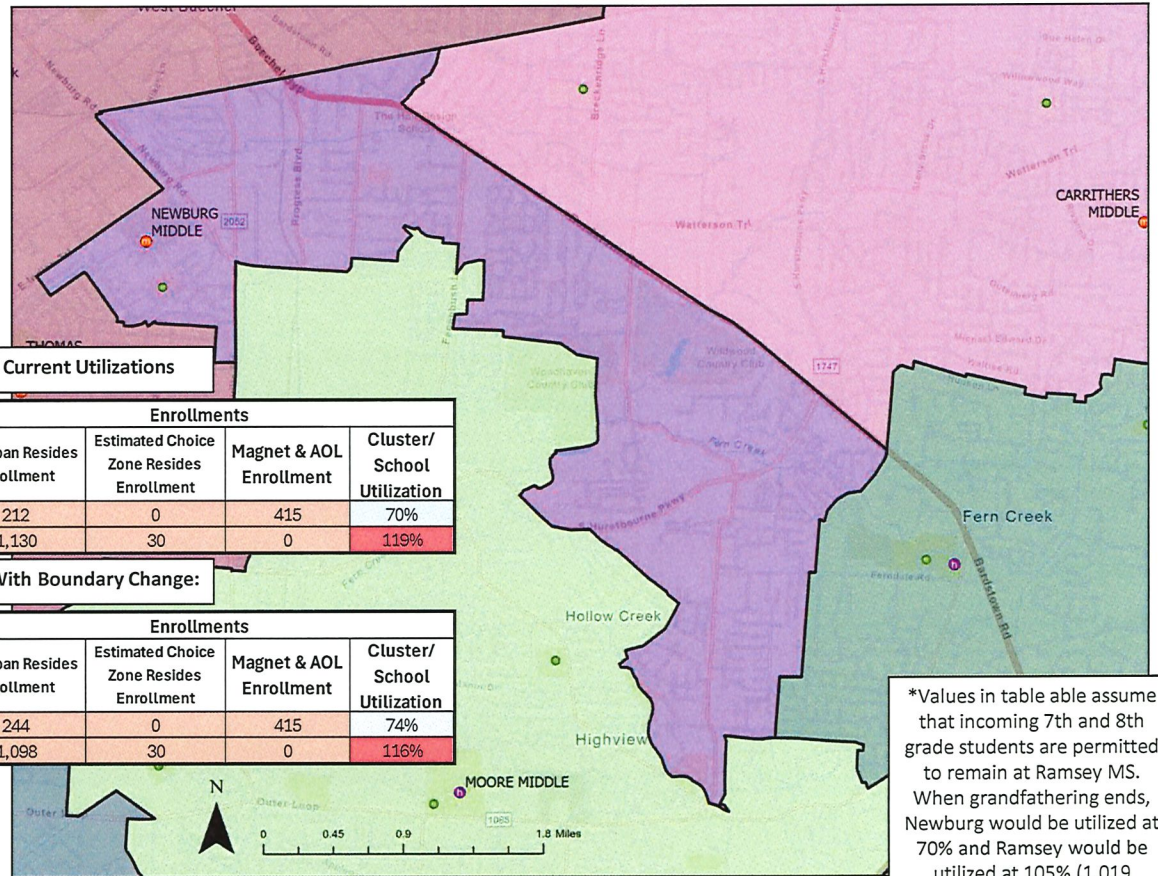
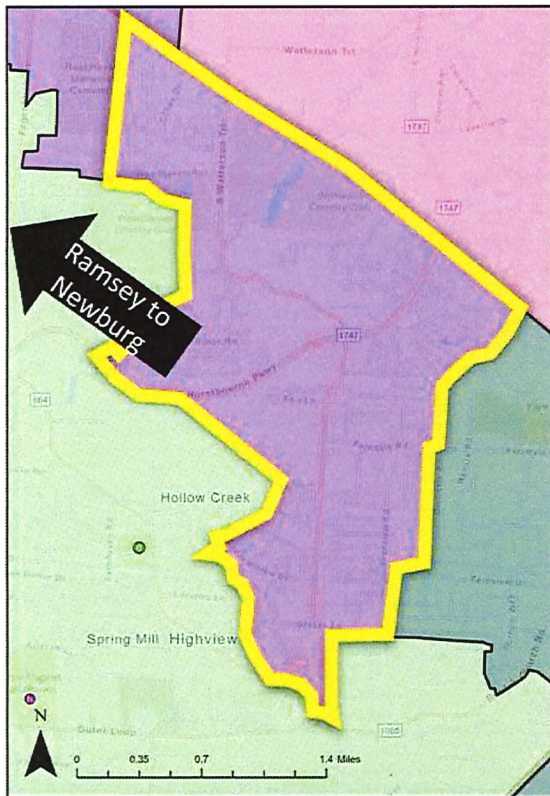
\*Values in table assume that incoming 7th and 8th grade students are permitted to remain at Ramsey MS. When grandfathering ends, Carrithers would be utilized at 101% and Ramsey would be utilized at 110% (1,072 students).





## Addressing Overutilization | Ramsey Middle School

- Ramsey Middle is overutilized, projected to be further over-utilized in 25-26.
- The area due east of the GE plant would move from Ramsey Middle to Newburg Middle.



Current Utilizations

Boundary	Cluster/ School Capacity	Enrollments			Cluster/ School Utilization
		Suburban Resides Enrollment	Estimated Choice Zone Resides Enrollment	Magnet & AOL Enrollment	
Newburg	893	212	0	415	70%
Ramsey	974	1,130	30	0	119%

\*With Boundary Change:

Boundary	Cluster/ School Capacity	Enrollments			Cluster/ School Utilization
		Suburban Resides Enrollment	Estimated Choice Zone Resides Enrollment	Magnet & AOL Enrollment	
Newburg	893	244	0	415	74%
Ramsey	974	1,098	30	0	116%

\*Values in table able assume that incoming 7th and 8th grade students are permitted to remain at Ramsey MS. When grandfathering ends, Newburg would be utilized at 70% and Ramsey would be utilized at 105% (1,019 students).