

# Investment Schedule



PREPARED FOR

## MARION COUNTY BOARD OF EDUCATION-LEBANON

March 16, 2025

Prepared by:  
Bryan Jennings  
bryan.jennings@tbs.toshiba.com

**TOSHIBA**

## INVESTMENT SCHEDULE

### MARION COUNTY BOARD OF EDUCATION-LEBANON

#### Proposed Solution

##### Model Details

- (9) Toshiba e-STUDIO9029AG
  - Included Features: 65-Sheet Multi-Staple Finisher, Holepunch for MJ1115/1116, Fax Unit / 2nd Line Fax Unit
- (6) Toshiba e-STUDIO9029AG
  - Included Features: 65-Sheet Multi-Staple Finisher, Holepunch for MJ1115/1116
- (1) Toshiba e-STUDIO6527ACTG
  - Included Features: 65-Sheet Saddle Stitch Finisher, Holepunch for MJ1115/1116
- (1) Toshiba e-STUDIO3528AG
  - Included Features: DSDF Document Feeder, Copier Stand
- (2) Toshiba e-STUDIO9029AG
  - Included Features: 65-Sheet Saddle Stitch Finisher, Holepunch for MJ1115/1116
- (1) PaperCut MF
  - Show Options: No
  - Show All Vendors: No
  - Order Type: Renewal
  - Users: 500
  - Acquisition type: Purchase
  - Channel: Non-Commercial
  - Maintenance & Support (Months): 54
  - Toshiba MFPs: 22
  - Printer Zones (Total): 1
  - VDI Support: No
- (1) Toshiba Professional Services
- (1) Card Readers - Elatec

- Device Family: Toshiba eSTUDIO A or AC
- Protocol: PI-Version
- Readers Needed: 22

**Service Details**

Pool Name	Pool Type	Monthly Overage Per Page
Mono Copier Pool	Mono	\$0.00440
Color Copier Pool	Color	\$0.03000

**Total Monthly Investment**

**\$2,821.49**

All-Inclusive Service: Toner, staples, parts, labor, maintenance, service and help desk support.

**TOSHIBA**

## Quality from an MFP that speaks volumes.

You've got a job to do. Bring it in house and let Toshiba's new e-STUDIO6527ACT help. With image quality unsurpassed in the industry, it will look good every time. 65PPM brilliant color output and 75PPM monochrome and over 8,000 sheets on tap mean the e-STUDIO6527ACT will make quick work of it too.

The refillable dual scan document feeder, now with double feed detection holds 300 originals and scans at up to 240 duplex impressions per minute. Built-in OCR makes your PDFs searchable or easily converts your paper-based documents to popular Microsoft Office formats. The feature set and productivity speak volumes.



**e-STUDIO6527AC**

### Features at a glance

- Full Color A3 MFP
- 65PPM Color, 75PPM Monochrome
- Optical Sensor Detects User Approaching
- Integral Tandem Drawer LCF
- Copy, Print, Scan, Fax

#### Popular Options

65-Sheet Saddle Stitch Finisher

Wireless Connectivity

External LCF with Piggyback Option

Dual Line Fax

**TOSHIBA**

## Features to serve the busiest departments.

Whether it's your marketing group or your centralized reprographics department, Toshiba's new e-STUDIO9029A has the features and performance to meet the needs. With 90PPM rich monochrome output and up to over 8,000 sheets on tap mean you can get the biggest jobs done quickly and easily.

The refillable dual scan document feeder, now with double feed detection holds 300 originals and scans at up to 240 duplex impressions per minute. Built-in OCR makes your PDFs searchable or easily converts your paper-based documents to popular Microsoft Office formats. The image quality, versatility and features will boost productivity to new levels.



**e-STUDIO9029A**

### Features at a glance

- Monochrome A3 MFP
- 90PPM
- Dual Scan Document Feeder
- Integral Tandem LCF
- Copy, Print, Scan, Fax

#### Popular Options

65-Sheet Saddle Stitch Finisher

Wireless Connectivity

External LCF with Piggyback Option

Dual Line Fax

**TOSHIBA**

## Features to serve the busiest departments.

Whether it's your marketing group or your centralized reprographics department, Toshiba's new e-STUDIO9029A has the features and performance to meet the needs. With 90PPM rich monochrome output and up to over 8,000 sheets on tap mean you can get the biggest jobs done quickly and easily.

The refillable dual scan document feeder, now with double feed detection holds 300 originals and scans at up to 240 duplex impressions per minute. Built-in OCR makes your PDFs searchable or easily converts your paper-based documents to popular Microsoft Office formats. The image quality, versatility and features will boost productivity to new levels.



**e-STUDIO9029A**

### Features at a glance

- Monochrome A3 MFP
- 90PPM
- Dual Scan Document Feeder
- Integral Tandem LCF
- Copy, Print, Scan, Fax

#### Popular Options

65-Sheet Saddle Stitch Finisher

Wireless Connectivity

External LCF with Piggyback Option

Dual Line Fax

**TOSHIBA**

## Everything you want in a small MFP.

Toshiba's new e-STUDIO3528A gives you all the features and security you'd expect in an enterprise MFP yet packs it in a very compact offering. At 35PPM it's ideal for small workgroups. Add the dual scan document feeder and you have performance and capabilities that rivals MFPs twice its size.

Built-in OCR makes your PDFs searchable or easily converts your paper-based documents to popular Microsoft Office formats. The customizable user interface allows you to streamline workflow of all your copying and scanning tasks. Users can even change the front panel background image



**e-STUDIO3528A**

### Features at a glance

- Black & White A3 MFP
- 35PPM Letter-size
- Small Workgroups
- Compact Footprint
- Copy, Print, Scan, Fax

#### Popular Options

50-Sheet Inner Finisher

Wireless Connectivity

Pedestal LCF

Dual Scan Document Feeder

# TOSHIBA

## Complete control over print, copy, scan and fax.

PaperCut print management software delivers real bottom-line savings for organizations of all sizes. It's scalable and customizable to your specific business needs. Implementation ranges from simply tracking users, departments, or devices to encouraging responsible use with quotas, print policies, and advanced scripts. Rest easy knowing your organization's printing is monitored and under control.



### Features at a glance

- Protect sensitive documents with Secure Print Release
- Allocate costs to personal or shared accounts
- Secure printing from anywhere on the network
- Promote savings with duplex and B&W printing rules
- Keep staff printing responsibly with popups and reminders
- BYOD printing for smartphones, tablets, and laptops
- Connect print rooms and Fab Labs to PaperCut
- Manage workflows with filters, restrictions, and redirection
- Seamlessly scan documents to email, folders, or the cloud





# TOSHIBA

## Toshiba solutions and professional services.

Complementing the partnerships Toshiba has with leading solutions providers, they also offer their own internally developed solutions that add value to the MFP and provide cost-effective and direct approaches to a customer's specific needs. Furthermore, Toshiba offers their own Professional Services personnel that can analyze, manage, design and implement solutions involving their own internally developed products, those from third party vendors or even customized offerings designed specifically to address a customer's exact requirements.



# TOSHIBA

### Features at a glance

- Directly address a customer's specific needs
- Cost-effective solutions
- Manufacturer's support & single-source provider
- Customizable, tailored solutions and services
- Knowledgeable staff on full range of product offerings

## Contactless Universal Reader.

ELATEC's primary expertise lies in the development and sale of short-range contactless writer/reader modules and contact writer/reader modules – such as RFID, NFC, Bluetooth, and smartcards. ELATEC solution architectures support the customer's entire value chain, with solutions that meet specific demands, can be used anywhere in the world and are absolutely reliable.

Their most success product is the universal reader TWN4 MultiTech. It is compatible with more than 60 internationally established RFID technologies and can be integrated into every industrial application – from secure printing and access control to point-of-sale systems.

ELATEC's family of RFID reader/writers is available in various forms which are designed for a wide variety of applications. Thanks to the underlying TWN Technology their behavior can be adjusted in order to act accordingly in different identification scenarios. Depending on the specific use case at hand you can choose among.

### Features at a glance

- Supports TWN4 MultiTech or NFC technology
- Wireless (re)programmable
- Card emulation
- Read/write mode



**ELATEC**  
RFID Systems

**TOSHIBA**

## Features to serve the busiest departments.

Whether it's your marketing group or your centralized reprographics department, Toshiba's new e-STUDIO9029A has the features and performance to meet the needs. With 90PPM rich monochrome output and up to over 8,000 sheets on tap mean you can get the biggest jobs done quickly and easily.

The refillable dual scan document feeder, now with double feed detection holds 300 originals and scans at up to 240 duplex impressions per minute. Built-in OCR makes your PDFs searchable or easily converts your paper-based documents to popular Microsoft Office formats. The image quality, versatility and features will boost productivity to new levels.



**e-STUDIO9029A**

### Features at a glance

- Monochrome A3 MFP
- 90PPM
- Dual Scan Document Feeder
- Integral Tandem LCF
- Copy, Print, Scan, Fax

#### Popular Options

65-Sheet Saddle Stitch Finisher

Wireless Connectivity

External LCF with Piggyback Option

Dual Line Fax

# TOSHIBA



## Committed to the highest quality.

The Toshiba Quality Commitment is our guarantee that you're getting the utmost in advanced technology, dependability, service and support. Toshiba stands squarely behind our promise with the assurance of complete satisfaction. Everything we do contributes to that goal—from setting the industry standard for research and development, to providing timely access to Toshiba support personnel. Look around. Toshiba sets the standard, with quality guaranteed.

### Free replacement

If your Toshiba manufactured copier, facsimile, printer, thermal barcode printer or its accessories do not operate within Toshiba's product specifications during the term of this program, and if the equipment cannot be repaired to perform within product specifications, Toshiba will replace the copier, facsimile, printer, thermal barcode printer or accessory at no charge with a model of equal or better features and specifications.

### Free loaner

If your Toshiba manufactured copier, facsimile, printer or thermal barcode printer is out-of-service more than two (2) consecutive business days after notifying your Authorized Toshiba Servicing Dealer or requires off-site service, a loaner copier, facsimile, printer or thermal barcode printer will be provided by the Authorized Toshiba Servicing Dealer at no additional charge.

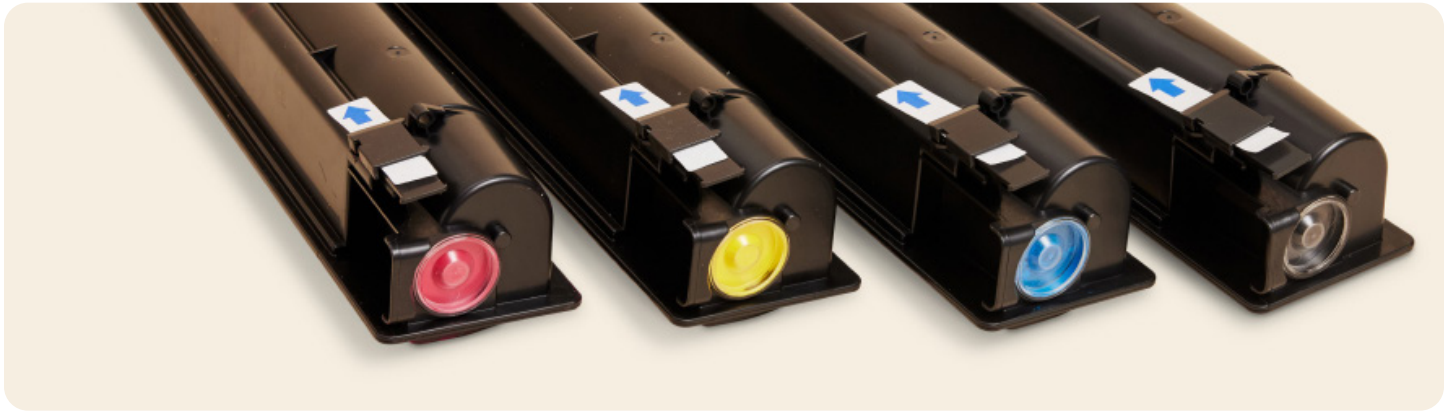
### Term of program

The term of this program is:

- a) for purchased equipment, three years from equipment installation date or maximum number of copies as stated in the product specifications, whichever occurs first; or
- b) for leased or rental equipment, three years or the length of the original lease starting from the equipment installation date, whichever is longer.



# TOSHIBA



## Toshiba toner is manufactured and available in USA.

Amid recent toner shortages affecting users nationwide, rest assured that our toner is readily available and produced right here in Mitchell, SD

The largest of Toshiba's two global manufacturing plants, it produces more than 1,200 tons of toner annually – that's nearly a million cartridges of black, cyan, yellow, and magenta that make your prints stand out.

The plant in Mitchell focuses on premium quality, environmental sustainability, and occupational health and safety standards within its 25-acre facility. It holds several ISO certifications and recently celebrated its 35th anniversary.

### Dedicated To Keeping Your Business Running

Our US toner manufacturing plant means you're never far from product availability. And, with Toshiba manufactured toner, you're guaranteed the best product for your device.

#### Our Toner:

- Follows strict ISO manufacturing guidelines
- Meets rigorous testing
- Delivers high-quality product for consistent results

From the vibrant colors to the beautiful imagery, it takes quality toner to make an impact. And that's what we deliver.



**If you're interested in learning more, please contact your Toshiba expert.**

[business.toshiba.com](https://business.toshiba.com)