

The background is a light gray surface decorated with various hand-drawn math symbols and school supplies. In the top left, there is a small gray box with a squiggly line. Next to it is a gray pencil. To the right is a gray paperclip. In the top right corner is a large blue 'X'. On the left side, there is a large white '+' sign. Below the main title, there is a white rectangular box containing the date 'March 2025'. At the bottom, there is a dark blue horizontal band. On the left of this band is a blue minus sign. In the center is the Bullitt County Public Schools logo, which consists of the letters 'BC' in white with a stylized road graphic, followed by the text 'BULLITT COUNTY PUBLIC SCHOOLS' in white. To the right of the logo are two gray paperclips and a gray circular object.

ACCESS TO ALGEBRA

March 2025

DATA IS SHOWING...

- Our students are maintaining and, in some cases declining in Math in 6th–9th grade according to KSA and ELS.
- There was a discrepancy between Algebra 1 Grades and the End of Course assessment scores.
- There were inequities in access, as not all middle schools offered the course.
- There is inconsistency in the level of rigor in Algebra I across the middle schools.
- Few high school students are enrolling in advanced math courses.



WHY ACCESS TO ALGEBRA?

- Provides funding and resources
- Vertical Training
- Incentives for Success
- Teacher Training and Support



VISION ALIGNMENT

OUR SHARED VISION

- Opportunities for students
- Opens the door to take higher level Math classes in high school
- More competitive for highly selective scholarships and colleges
- Provides high quality professional learning as a direct correlation more students should master standards for the next level

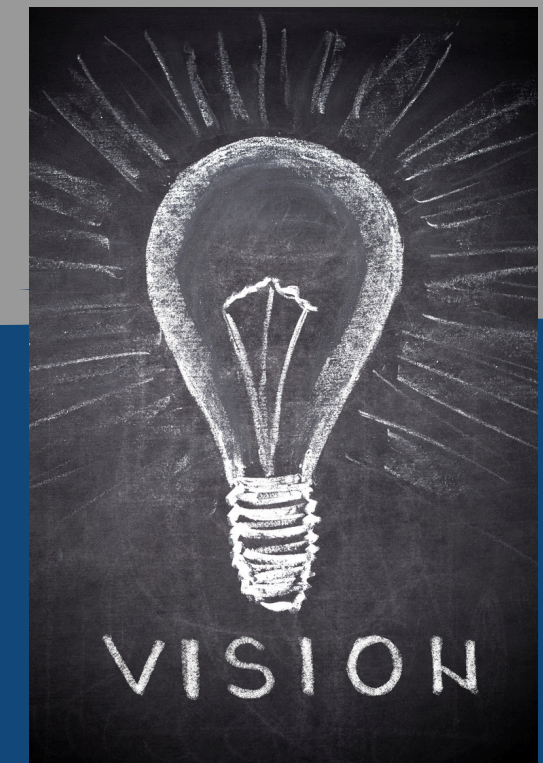
Bullitt County Board of Education Aspiration Statements



Advance Kentucky

Vision:

To increase the number of students ready to Algebra I during 8th and 9th grades



GRANT DETAILS

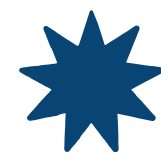
- The selection process included site visits with schools, a formal invitation to participate, and a Letter of Agreement negotiation meeting.
- Preference was given to schools that are in a position to initiate or dramatically increase access to advanced middle school math programs, particularly for underrepresented student populations.
- All 7th and 8th-Grade Students will take the PSAT (Preliminary SAT/National Merit Scholarship Qualifying Test) to monitor their growth.
- All teachers will use at least 4 lessons from the A2A curriculum.

COMMITTEE ACTION

- Data Analysis
- Root Cause Analysis
- Teacher Feedback
- Policy Revisions
- Created Consistent Criteria
- Set Goals



NEXT STEPS



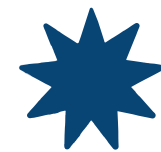
Assess

- All 7th and 8th-grade students take the PSAT.
- Determine what students are identified as potential candidates to take Algebra 1 using defined criteria.



Define & Determine

- Finalize Policy
- Who is teaching the course at all middle schools.
- Family Communication
 - Create communication with families about the policy changes.
 - System and expectations on how to discuss pathways with families and the expectation to take an advanced placement course as a Senior. This would include a parent/student contract.



Training and Coaching

- Train teachers June 10th-13th
- Establish and implement coaching plan for implementation and support.



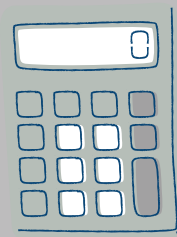
Upcoming Legislation

- House Bill 190

EXPECTED IMPACT & OUTCOMES



- ★ Increase student mastery of math standards
- ★ Increase communication and collaboration between all secondary math teachers
- ★ Increase the number of underrepresented students being successful in Algebra I either in 8th grade or 9th grade
- ★ Increase teachers' efficacy to teach math in the middle grades
- ★ Level of rigor will be consistent in all Algebra 1 Courses (MS & HS)



POLICY CURRENTLY SAYS....

High school courses offered at the middle school level teach and assess the same Kentucky Academic Standards as those offered at the high school level.

In order to earn high school credit, middle school students must pass a District comprehensive exam in Algebra I, English I, Earth Space Science, and Geometry with an eighty percent (80%) or higher.

The middle school level course is taught by teachers with either secondary or middle school level certification with the appropriate content specialization or accessed through on-line platform monitored and assisted by a certified teacher, or a blended classroom environment.



POLICY WILL SAY....



High school courses offered at the middle school level teach and assess the same Kentucky Academic Standards as those offered at the high school level.

Students successfully completing high school credit courses during middle school will receive transcript credit. However, the grades earned in these courses will not be factored into their high school Grade Point Average (GPA).

The middle school level course is taught by teachers with either secondary or middle school level certification with the appropriate content specialization or accessed through on-line platform monitored and assisted by a certified teacher, or a blended classroom environment.