

## FIELD OBSERVATION REPORT #08

### 2025-02 - New Board Office

■ TO:	Kenton County Board of Education 1055 Eaton Drive Ft. Wright, KY 41017	■ DATE:	2025.02.19
ATTENTION:	Mr. Kevin Pfefferman		
■ FROM:	Mark Perry mperry@embosdesign.com 906 Monmouth Street Newport, KY 41071 V: 859.431.8612 • D: 859.578.6013	■ PROJECT:	New Board Office KCSD BG#24-084
COPIES TO:	Mr. Matt Rigg; Mrs. Carrie Hooten, Mr. Brian Vanover	PROJECT NO.:	22-106

■ WE TRANSMIT THE ATTACHED ITEMS VIA: **eComm**

PURPOSE	<input checked="" type="checkbox"/> For your use	DISPOSITION	<input type="checkbox"/> No exceptions noted
	<input type="checkbox"/> As requested		<input type="checkbox"/> Exceptions noted, Revise as indicated.
	<input type="checkbox"/> For review and comment		<input type="checkbox"/> REJECTED: REVISE AND RESUBMIT
	<input type="checkbox"/> For information		
	<input checked="" type="checkbox"/> For record		
	<input type="checkbox"/> For approval		
	<input type="checkbox"/>		

COPIES	DATE	DESCRIPTION	PAGES
1	2025-02	Field Observation Report	10

#### Division 01: General Requirements

01.01: 2025.02.19 – A total of four of the budgeted twenty inclement weather days beyond the normally anticipated weather days had been claimed and granted as of this date.

#### Division 03: Concrete

03.01: 2025.02.04 – Stair #2 concrete was poured earlier in the day.

03.02: 2025.02.04 – The final 3<sup>rd</sup> floor concrete pour scheduled for 2/10, but may move up to 2/7, pending readiness and availability.

03.03: 2025.02.12 – The 3<sup>rd</sup> floor pour had occurred, and the slab was curing under blankets and plastic.

#### Division 05: Metals

05.01: 2025.02.04 – Cold form metal framing on the north elevation was complete and had been inspected. Work was active on the east elevation, 2<sup>nd</sup> floor.

05.02: 2025.02.04 – 3<sup>rd</sup> floor area A metal deck was in place. Roof deck was staged on roof framing in multiple locations.

05.03: 2025.02.07 – Emboss and Advantage visited the site to review several steel connections flagged during special inspections. Concerns were discussed and ultimately the 3<sup>rd</sup> floor concrete pour was allowed to proceed without delay as the weight of the pour would have no impact on the steel corrections themselves. Steel frame connections were inspected in other parts of the building and no deficiencies were found outside of the roof connections which were still mostly assembled with erection bolts and not yet detailed.

05.04: 2025.02.12 – Emboss visited the site to review issues relative to exterior wall CFMF and HSS girts. Construction tolerances for the HSS girts above the ribbon windows were creating conflicts for CFMF walls and sheathing at the north end of the building, which had been sheathed at the time of visit. The same is anticipated to occur on the other three sides of the building.

If enclosures are not as noted, please notify Emboss Design immediately.

2025-02-rpt 08-New Board Office

05.04: 2025.02.18 – The erector was working at the south end of the third floor. Roof deck had been placed over most of area B, though steel connection detailing was largely yet to occur.

**Division 07: Thermal and Moisture Protection**

07.01: 2025.02.18 – The air barrier subcontractor and manufacturer's representative will be visiting the site to review the north end of the building. It was requested we receive confirmation from the manufacturer regarding warranty at the exterior sheathing / HSS girt interface now that tolerances will prevent the sheathing from bypassing the girts.

07.02: 2025.02.18 – It was reported SBS roofing will start the first week of March.

**Division 08: Doors and Windows**

08.01: 2025.02.04 – Door frames had been installed at many interior locations – area B on both first and second floors. It was reported all but three HM frames had been received and were on-site.

08.02: 2025.02.18 – HM frame installation appeared complete in area B of the second floor.

**Division 09: Finishes**

09.01: 2025.02.04 – Interior CFMF was largely complete at area 2B.

09.02: 2025.02.07 - Proper acoustic isolation was reviewed around the top and bottom of wall framing at Production Studio #223 and at the top of other STC-rated office walls.

09.03: 2025.02.18 – Blocking had progressed at many interior wall locations.

**Division 20-28: MEP**

20-28.01: 2025.02.04 – Panelboard tubs were installed in Electrical #127A.

20-28.02: 2025.02.04 – Ductwork installation had progressed on the 1<sup>st</sup> floor, with some sections staged at both the 1<sup>st</sup> and 2<sup>nd</sup> floors.

20-28.03: 2025.02.18 – Most MEP rough-in was complete on the first floor outside of the board room and subcontractors had progressed to the second floor.

20-28.04: 2025.02.18 – It was reported the geothermal well field will begin March 10<sup>th</sup>.

**Division 31: Earthwork**

31.01: 2025.02.19 – Additional gravel subbase had been placed south of the asphalted portion of the site.

**CONSTRUCTION PHOTOS**

2025.02.04 – Bridge



2025.02.04 - Bridge



2025.02.04 - Exterior



2025.02.04 - Exterior



2025.02.04 – Exterior



2025.02.04 - Exterior



2025.02.04 – Board room operable partition pocket



2025.02.04 – Board room looking east



2025.02.04 – Board room looking north



2025.02.04 – Board room looking northeast



2025.02.04 – Entry lobby ductwork



2025.02.04 – Looking north through Men #111 and Women #112



2025.02.04 – Stair #2



2025.02.04 – 1<sup>st</sup> floor, east corridor, looking north



2025.02.04 – Storage #162



2025.02.04 – North wall of Virtual Learning Classroom



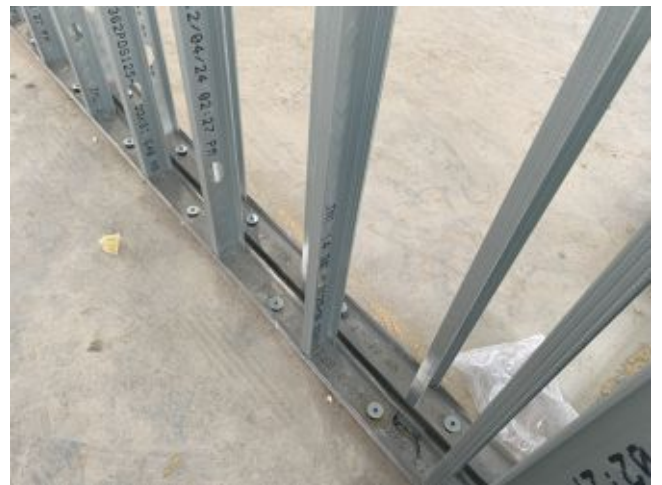
2025.02.04 – 1<sup>st</sup> floor, west corridor, looking south



2025.02.04 – 2<sup>nd</sup> floor, east corridor, looking south



2025.02.04 – Office #233



2025.02.04 – Double stud wall with acoustic isolation anchors at Production Studio #233



2025.02.04 – Men #245 and Women #246



2025.02.04 – Looking towards Janitor #247 and Storage #219



2025.02.04 – 2<sup>nd</sup> floor at the sawtooth, looking south



2025.02.04 – 2<sup>nd</sup> floor Outdoor Patio #252



2025.02.04 – Corridor 200A looking north



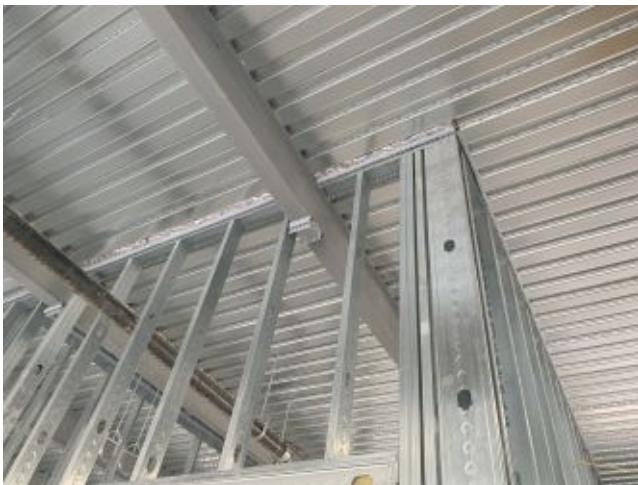
2025.02.04 – 3<sup>rd</sup> floor



2025.02.04 – 3<sup>rd</sup> floor



2025.02.04 – 3<sup>rd</sup> floor



2025.02.07 – Acoustic seals at top of wall



2025.02.07 – Sound isolation board at bottom of Production Studio wall



2025.02.07 – Sound isolation board at bottom of Production Studio wall



2025.02.12 – Final 3<sup>rd</sup> floor pour



2025.02.12 – Final 3<sup>rd</sup> floor pour



2025.02.12 – 3<sup>rd</sup> floor



2025.02.12 – North wall



2025.02.18 – South of parking lot



2025.02.18 – South of parking lot



2025.02.18 – Building from southwest



2025.02.18 – Building looking north



2025.02.18 – Building looking north



2025.02.18 – Men #164



2025.02.18 - 1<sup>st</sup> floor, east corridor, looking north



2025.02.18 – 2<sup>nd</sup> floor, east corridor, looking south



2025.02.18 – Office #233



2025.02.18 – 2<sup>nd</sup> floor, west corridor, looking north



2025.02.18 – 3<sup>rd</sup> floor, outdoor patio



2025.02.18 – 3<sup>rd</sup> floor, south end



2025.02.18 – Board Room roof framing from above

- ☐ Please acknowledge receipt of transmitted items.
- ☐ Return transmitted items to eMBOSS Design <sup>PSC</sup>.

**END**