



AIA Document G731™ – 2019

Change Order, Construction Manager as Adviser Edition

PROJECT: *(name and address)*
Christian County High School

5185 Fort Campbell Blvd Hopkinsville,
KY 42240

OWNER: *(name and address)*
Christian County Board of Education
200 Glass Avenue Hopkinsville, KY 42240

CONTRACTOR: *(name and address)*
Kentucky Mirror & Plate Glass
722 East 2nd Street Owensboro, KY 42303

CONTRACT INFORMATION:
Contract For: BP 084-05 Alum Frame
Ent Storefront Curtain
Date: September 08, 2023

CHANGE ORDER INFORMATION:
Change Order Number: 060

Date: January 13, 2025

ARCHITECT: *(name and address)*
Hafer PSC
101 E. Second Street, Suite 101 Owensboro, KY 42303

CONSTRUCTION MANAGER: *(name and address)*
Alliance Corporation
116 E. College Street Glasgow, KY 42141

THE CONTRACT IS CHANGED AS FOLLOWS:

(Insert a detailed description of the change and, if applicable, attach or reference specific exhibits. Also include agreed upon adjustments attributable to executed Construction Change Directives.)

Cost associated with spandrel glass revisions per PR #34.

The original Contract Sum was	\$	1,234,393.00
Net change by previously authorized Change Orders	\$	52,736.00
The Contract Sum prior to this Change Order was	\$	1,287,129.00
The Contract Sum will be increased by this Change Order in the amount of	\$	6,445.00
The new Contract Sum including this Change Order will be	\$	1,293,574.00

The Contract time will be unchanged by (0) days.
The Contractor's Work shall be substantially complete on .

NOTE: This Change Order does not include adjustments to the Contract Sum or Guaranteed Maximum Price, or the Contract Time, that have been authorized by Construction Change Directive until the cost and time have been agreed upon by both the Owner and Contractor, in which case a Change Order is executed to supersede the Construction Change Directive.

NOT VALID UNTIL SIGNED BY THE ARCHITECT, CONSTRUCTION MANAGER, CONTRACTOR, AND OWNER.

ARCHITECT *(Signature)*

BY: Eric Rang, Hafer PSC
(Printed name, title, and license number if required)

Date

CONSTRUCTION MANAGER *(Signature)*

BY: Kevin Hitchel, Alliance Corporation
(Printed name and title)

Date

CONTRACTOR *(Signature)*

BY: Josh Abner, Kentucky Mirror & Plate Glass
(Printed name and title)

Date

OWNER *(Signature)*

BY: Christopher Bentzel, Christian County Board of Education
(Printed name and title)

Date



PROPOSED CHANGE ORDER

PROJECT Christian County High School

CONTRACTOR/SUPPLIER KY Mirror

BID PACKAGE 084

DETAIL ITEM	AMOUNT	
LABOR	\$	1,200.00
MATERIALS	\$	4,880.00
PROFIT & OVERHEAD	\$	365.00
BOND INSURANCE		
COST BREAKDOWN TOTAL	\$	6,445.00

DESCRIPTION

Spandrel glass revisions per PR #34.

PR # 34 (ATTACH PR)

CHANGE ORDER INITIATED BY:

- ARCHITECT/ENGINEER
- OWNER
- CONTRACTOR
- CM
- CODE OFFICIAL
- OTHER _____

PLEASE INCLUDE THIS FORM WITH EVERY CHANGE ORDER.



architects • designers • engineers

21 SE Third Street, Suite 800 • Evansville, IN 47708
P: 812.422.4187 • F: 812.421.6776
101 E Second Street, Suite 101 • Owensboro, KY 42301
P: 270.926.1331 • F: 270.684.4456
haferdesign.com

PROPOSAL REQUEST

Project: Christian County High School
5185 Ft. Campbell Blvd
Hopkinsville, KY 42240

PR No.: 034

Date: December 17, 2024

Owner: Christian County Public Schools
222 Glass Ave
Hopkinsville, KY 42240

Project Number: 2106-204

Contract for:

To: Kevin Hitchell
Alliance Corporation
116 E. College Steet
Glasgow, KY 42141

RE: Under Stair Walls

Please submit an itemized quotation for changes in the Contract Sum and/or Time incidental to proposed modifications to the Contract Documents described herein.
THIS IS NOT A CHANGE ORDER NOR A DIRECTION TO PROCEED WITH THE WORK DESCRIBED HEREIN.

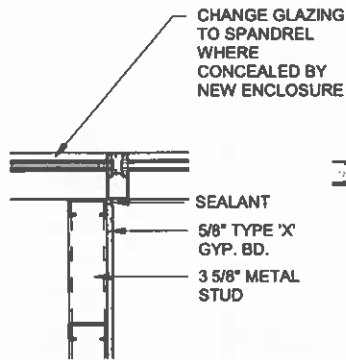
Description:

1. Enclose areas under stairs in academies with chase wall per PR34-A1. Provide Spandrel glazing at windows that are within enclosed area. Move outlets and lights as shown on plan.

Attachments: PR34-A1

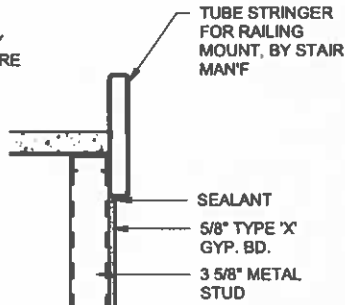
By: Eric Rang

CC:



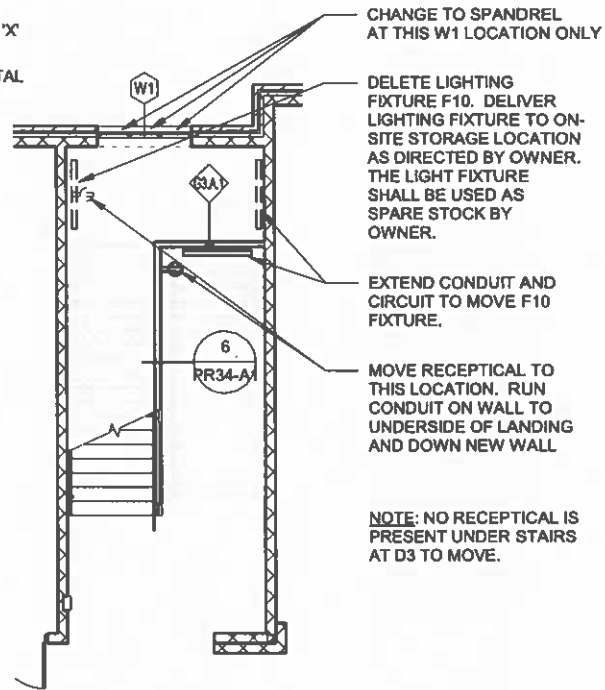
1 DETAIL

1" = 1'-0"



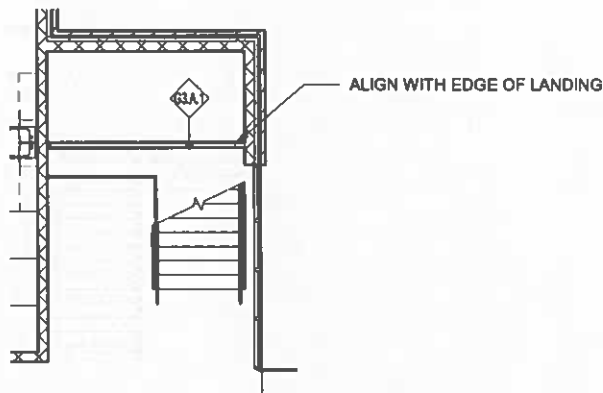
6 DETAIL

1" = 1'-0"



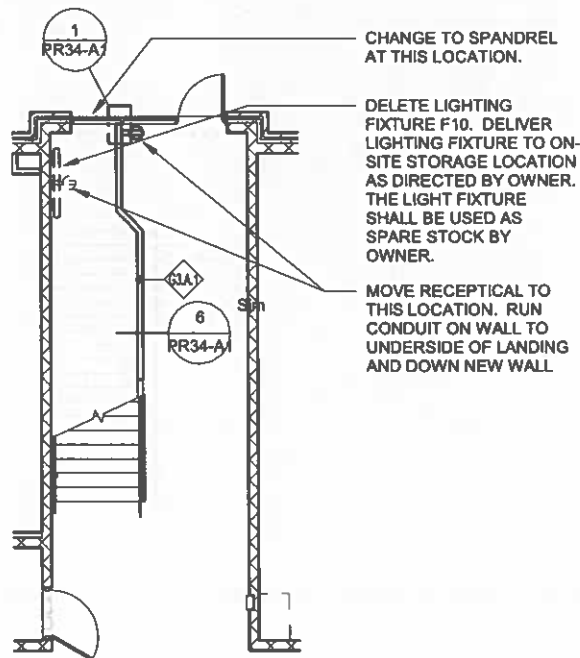
5 STAIR ENCLOSURE D3 & G2

1/8" = 1'-0"



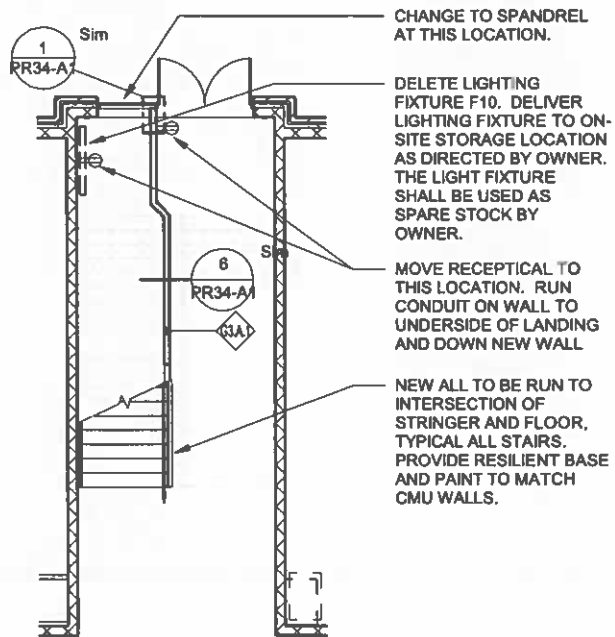
3 STAIR ENCLOSURE D2, E2, G3 & J2

1/8" = 1'-0"



2 STAIR ENCLOSURE D1, G1 & J1

1/8" = 1'-0"



4 STAIR ENCLOSURE D1, E1 & E3

1/8" = 1'-0"

HOPKINSVILLE - CHRISTIAN COUNTY ACADEMY

KDE #: BG 22-104

5185 FT. CAMPBELL BLVD
HOPKINSVILLE, KY 42240

HAFER
architects • designers • engineers

21 SE Third Street,
Suite 800
Evansville, IN 47708

T: 812.422.4187
F: 812.421.6776
www.haferdesign.com

ARCHITECTS PROJECT NO. DATE
2106-204 12/17/24

TYPE OF DRAWING NO.

PR34-A1



722 E 2nd Street, Owensboro, KY

TO: Alliance Corporation
Attn: Kevin Hitchel

JOB NAME: Hopkinsville Christian County Academy

Date: 12/4/2024

CHANGE ORDER PR #34 REQUEST

PROVIDE SPANDREL GLAZING IN WINDOWS THAT ARE WITHIN ENCLOSED AREAS IN SPECIFIED STAIRWAY

REPLACE VISION GLASS IN STOREFRONT WITH SPANDREL, MATCHING OTHER SPANDREL PER PROVIDED LOCATION IN PR #034	\$	4,144.00
ALUMINUM BACKPANS AT LOCATIONS WHERE SPANDREL IS EXPOSED (WINDOW W1).	\$	736.00
LABOR TO CUT AND INSTALL BACKPANS AT W1 LOCATIONS 6 HOURS AT \$60.00 PER HOUR	\$	360.00
LABOR TO COORDINATE/LAYOUT STOREFRONT MULLIONS FOR PROPER STUD WALL INSTALLATION TO ALIGN WITH STOREFRONT VERTICAL MULLION 2 MEN 7 HOURS AT \$60.00 PER HOUR	\$	840.00
	Tax 6%:	\$ 364.80
	Subtotal:	\$6,445
	Total:	\$6,445
Total Change		\$6,445
TOTAL AMOUNT of this CHANGE ORDER: (incl. Materials, Tax & Labor)		\$6,445

FACPAC Contract Change Order Supplemental Information Form (Ref# 61583)

Form Status: Saved

Tier 1 Project: Consolidated High School

BG Number: 22-104

Status: Active

District: Christian County (HB678) (115)

Phase: Project Initiation (View Checklist)

Contract: Kentucky Mirror & Plate Glass Co., Inc. , 0084, Alum Frame Entrances, Storefronts,
Glazed Alum Curtain Wall

Type: CM Bid Package

Proposed

Change Order Number	5
Time Extension Required	No
Date Of Change Order	1/13/2025
Change Order Amount To Date	Increase

Construction Contingency

Calculations below are project wide. Remaining negative Construction Contingency may require the submission of a revised BG1.

Current Approved Amount	\$6,320,436.60
Net Approved COs	\$365,699.78
Remaining After Approved COs	\$5,954,736.82
Net All COs	\$310,172.52
Remaining After All COs	\$6,010,264.08

This Requested Change Order Amount \$6,445.00

+/-

Change In A/E Fee This Change Order

+/-

Change In CM Fee This Change Order \$0.00

+/-

Remaining Construction Contingency \$6,010,264.08

Balance

Contract Change Requested By Architect/Engineer

Contract Change Reason Code Expansion of Scope

Change Order Description And Justification

Cost associated with spandrel revisions per PR #34.

Cost Benefit To Owner

The cost of this change order has been reviewed and determined to be reasonable.

Contract unit prices have been utilized No

to support the cost associated with this

change order.

Detailed Cost Breakdown

Contract unit prices have not been utilized, provide a detailed cost breakdown which separates labor, material, profit and overhead.

Detail Item	Amount	Percent of Total
Labor	\$1,200.00	18.62%
Materials	\$4,880.00	75.72%
Profit and Overhead	\$365.00	5.66%
Bond Insurance		0.00%
Cost Breakdown Total:	\$6,445.00	

Cost for this Change Order supported by an alternate bid or competitive price quote

Explain Why

Executed contract with contractor.

Change Order Supplemental Information Form Signature Page (Online Form Ref# 61583)

Architect

Date

Construction Manager

Date

Finance Officer

Date

Local Board of Education Designee

Date