

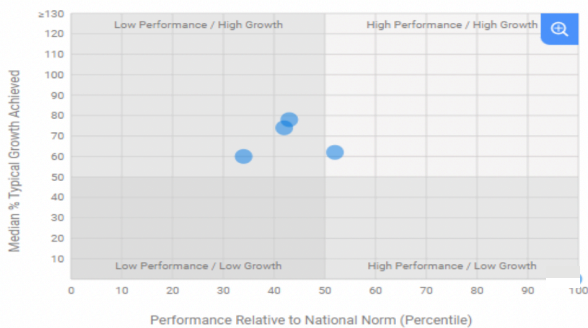


Winter IReady Data

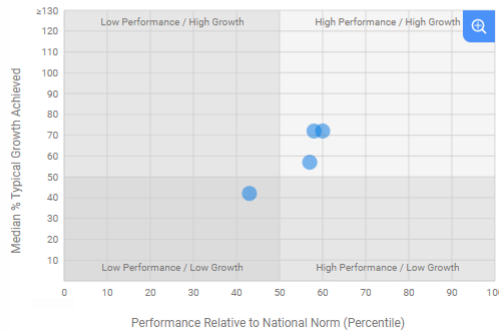
Winter IReady Notes

All schools remained in the high growth category in reading. Relative to national norms, Camp Dick Robinson (CDR), Lancaster Elementary School (LES), and Paint Lick Elementary School (PLE) are high performing and demonstrate high growth in both reading and math. Additionally, Garrard Middle School (GMS) showed improvement by increasing in both performance and growth in reading.

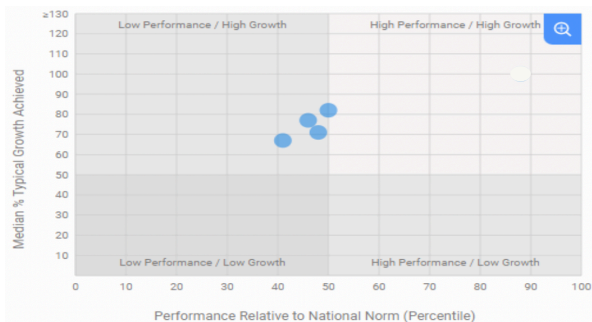
WINTER 2023- MATH



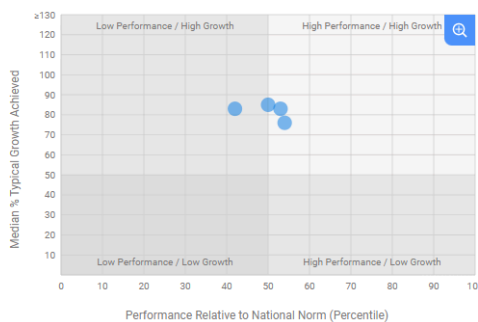
WINTER 2024- MATH



WINTER 2023- READING



WINTER 2024- READING



Focus Areas

Next steps focus on addressing curriculum gaps by aligning pacing guides and standards. Teachers will receive support to implement data-driven practices through coaching, while targeted instruction will address diverse learner needs. Teacher training will emphasize strategies that promote student engagement, and enrichment opportunities will ensure high-performing students continue to grow. Progress will be monitored through assessments, and PLCs will be used for reflection, data analysis, and goal setting.



Garrard County Schools

Common Assessments

Our Goals:

Below are the key objectives of our efforts to enhance common assessments in Garrard County Schools:

- Elevate expectations for teaching and learning
- Achieve complete alignment of district curriculum with Kentucky Academic Standards (KAS)
- Foster collaboration across the district, promoting both vertical and horizontal alignment
- Ensure the provision of equitable education to all students within the district



Unit Common Assessment Analysis

Teacher:	Date:	Content/Unit:	
Percentage on Assessment	Number of All Students	Number of Students with IEP	Number ELL Students
90-100% Distinguished			
75-89% Proficient			
55-74% Apprentice			
54% and below Novice			

List students who scored novice.	List students who scored apprentice.

What is the intervention plan for students who scored novice or apprentice?

What targets and/or question types were the most difficult for the students? Which targets showed mastery in one type of question but not another? Which targets seem to be more difficult than the others (no matter the target type) that the class struggled with?

Data Analysis

Common assessments provide valuable data to inform instruction and improve student learning. Results are analyzed and discussed during grade-level and/or content area PLCs to identify trends, address gaps, and set goals.

Garrard County Schools has achieved success through common unit assessments and data analysis, creating consistent expectations and equitable learning opportunities. This approach helps teachers address gaps, celebrate growth, and improve student achievement.

