



INTRODUCTION TO EIS DATA

2024-2025 SCHOOL YEAR

MAJOR DATA POINTS



Kentucky Department of
EDUCATION



i-Ready[®]



Pear Assessment

**KSA
DATA**

**UNIVERSAL
SCREENER**

**COMMON
ASSESSMENTS**



i-Ready®

EARLY FALL DATA

Overall Placement

Students Assessed/Total: 1,546/1,609

READING



Overall Placement

Students Assessed/Total: 1,528/1,607

MATH



EARLY FALL DATA

GENERALIZATIONS



Our commitment to the Science of Reading is paying off



Spelling is an area we need to refocus on



We continue to see growth year to year for all students



Red Words follow a similar pattern - spelling should be a focus



Phonemic Awareness is fairly consistent across our schools



Fluency is increasing and we believe will continue to do so



COMMON ASSESSMENTS

Insights

SUMMARY

SUB-GROUP

ANALYSIS

FREQUENCY

STANDARDS

STUDENTS



< INSIGHTS / QUESTION ANALYSIS

2024-25

Class Assessment

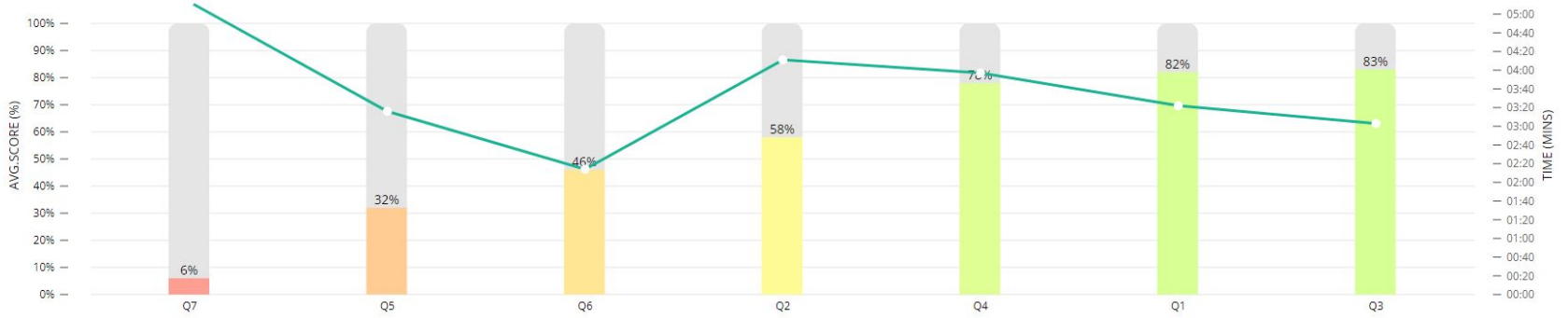
24-25 EIS Math5 - Unit 1

Anyone

FILTERS

Question Performance Analysis | 24-25 EIS Math5 - Unit 1 (ID:5614a0)

Sort By (asc.): Performance Question



ITEMS (SORTED BY PERFORMANCE IN ASCENDING ORDER)

Detailed Performance Analysis By School | 24-25 EIS Math5 - Unit 1 (ID:5614a0)

Compare by School

SCHOOLS

Q7

POINTS 2

5.MD.C.5.C

Q5

POINTS 2

5.MD.C.5.C

Q6

POINTS 1

5.MD.C.3.B 1+

Q2

POINTS 2

5.MD.C.5.C

Q4

POINTS 4

5.MD.C.5.B

Q1

POINTS 3

5.OA.A.2 1+

Q3

POINTS 3

5.OA.A.2 1+

DISTRICT AVG.

5%

37%

45%

56%

79%

83%

87%

6%

32%

46%

58%

78%

82%

83%



ELEMENTARY COMMON ASSESSMENT WINDOWS

3RD GRADE	UNIT 1	UNIT 2	UNIT 3	UNIT 4	UNIT 5	UNIT 6	UNIT 7	UNIT 8
MATH	9/16-9/27	10/24-10/31	12/2-12/6	1/27-2/3	3/3-3/7	4/1-4/7	5/5-5/9	Review purpose
SCI								
S.S.								

4TH GRADE	UNIT 1	UNIT 2	UNIT 3	UNIT 4	UNIT 5	UNIT 6	UNIT 7	UNIT 8	UNIT 9
MATH	Aug. 26th-Sep. 7th	Sep. 19th-Oct. 3rd	Oct. 14th-Nov.26th	Dec. 2nd-20th	Jan. 6-31st	Feb. 3rd-Mar. 27th	Apr. 7th-11th	Apr. 14th-18th	Apr. 21st-May 1st
SCI	Oct.14-24	Nov.18-Dec.6	Feb.24-Mar.7	Apr.7 - Apr.17					
S.S.									

5TH GRADE	UNIT 1	UNIT 2	UNIT 3	UNIT 4	UNIT 5	UNIT 6	UNIT 7	UNIT 8	UNIT 9
MATH	Sep. 3rd - Sep. 10th	Sep. 30th - Oct. 18th	Nov. 11th - Nov. 22nd	Dec. 16th - Dec. 20th	Feb. 11th - Feb. 28th	Mar. 24th - Apr. 11th	Apr. 14th - Apr. 30th	Review purpose only	N/A
SCI				End of Fall Sem.					End of Spring Sem
S.S.	A Sept 23 - Oct 4 B Dec 2 - Dec 20	Feb 11 - Feb 28	Mar 17 - 27	Apr 21 - May 9					

KY SUMMATIVE ASSESSMENT

GENERALIZATIONS



The work and commitment to CTE continues to pay off at EHS



The accountability measures are changing



TKS saw growth across every content area and in overall accountability



Things we have done are working - triangulating data shows us this



Large % of Apprentice Students at all grade levels and across all content areas



We are actively working on addressing gaps for future success