



AIA® Document G731™ – 2019

Change Order, Construction Manager as Adviser Edition

PROJECT: (name and address)

Christian County High School
5185 Fort Campbell Blvd Hopkinsville,
KY 42240

OWNER: (name and address)

Christian County Board of Education
200 Glass Avenue
Hopkinsville, KY 42240

CONTRACTOR: (name and address)

Robinson Painting
3000 Austin Avenue
Evansville, IN 47712

CONTRACT INFORMATION:

Contract For: BP 099-01 -
Painting/JT Sealants
Date: September 08, 2023

ARCHITECT: (name and address)

Hafer PSC
21 Southeast Third St, Ste 800
Evansville, IN 47708

CHANGE ORDER INFORMATION:

Change Order Number: 045
Date: October 14, 2024

CONSTRUCTION MANAGER: (name and address)

Alliance Corporation
116 E. College Street
Glasgow, KY 42141

THE CONTRACT IS CHANGED AS FOLLOWS:

(Insert a detailed description of the change and, if applicable, attach or reference specific exhibits. Also include agreed upon adjustments attributable to executed Construction Change Directives.)

Painting scope revisions per PR #20, area C 2nd floor redesign.

The original Contract Sum was	\$	1,627,200.00
Net change by previously authorized Change Orders	\$	0.00
The Contract Sum prior to this Change Order was	\$	1,627,200.00
The Contract Sum will be increased by this Change Order in the amount of	\$	4,965.51
The new Contract Sum including this Change Order will be	\$	1,632,165.51

The Contract Time will be unchanged by Zero (0) days.
The Contractor's Work shall be substantially complete on .

NOTE: This Change Order does not include adjustments to the Contract Sum or Guaranteed Maximum Price, or the Contract Time, that have been authorized by Construction Change Directive until the cost and time have been agreed upon by both the Owner and Contractor, in which case a Change Order is executed to supersede the Construction Change Directive.

NOT VALID UNTIL SIGNED BY THE ARCHITECT, CONSTRUCTION MANAGER, CONTRACTOR, AND OWNER.

Hafer PSC

ARCHITECT (Firm name)

Alliance Corporation

CONSTRUCTION MANAGER (Firm name)

SIGNATURE
Eric Rang, AIA, Senior Associate

PRINTED NAME AND TITLE

SIGNATURE
Kevin Hitchel, Sr. Project Manager

PRINTED NAME AND TITLE

DATE:

DATE:

Robinson Painting

CONTRACTOR (Firm name)

Christian County Board of Education

OWNER (Firm name)

SIGNATURE
Isaac Robinson

PRINTED NAME AND TITLE

SIGNATURE
Christopher Bentzel, Superintendent

PRINTED NAME AND TITLE

DATE:

DATE:



PROPOSED CHANGE ORDER

PROJECT Christian County High School

CONTRACTOR/SUPPLIER Robinson Painting

BID PACKAGE 099

DETAIL ITEM		AMOUNT
LABOR	\$	3,203.29
MATERIALS (DPO)	\$	1,114.70
PROFIT & OVERHEAD	\$	647.52
BOND INSURANCE		
<hr/>		
COST BREAKDOWN TOTAL	\$	4,965.51

DESCRIPTION

Painting scope revisions per PR #20, Area C 2nd Floor Redesign.

PR # 20 (ATTACH PR)

CHANGE ORDER INITIATED BY:

- ARCHITECT/ENGINEER
- OWNER
- CONTRACTOR
- CM
- CODE OFFICIAL
- OTHER _____

PLEASE INCLUDE THIS FORM WITH EVERY CHANGE ORDER.

PROPOSAL REQUEST

Project: Christian County High School
5185 Ft. Campbell Blvd
Hopkinsville, KY 42240

PR No.: 019

Date: June 28, 2024

Owner: Christian County Public Schools
222 Glass Ave
Hopkinsville, KY 42240

Project Number: 2106-204

Contract for:

To: Kevin Hitchell
Alliance Corporation
116 E. College Steet
Glasgow, KY 42141

RE: **Area C Second Floor**

Please submit an itemized quotation for changes in the Contract Sum and/or Time incidental to proposed modifications to the Contract Documents described herein.
THIS IS NOT A CHANGE ORDER NOR A DIRECTION TO PROCEED WITH THE WORK DESCRIBED HEREIN.

Description:

Delete ROTC Suite buildout as originally shown in the bid documents. Provide a large wrestling room, office and storage room as shown in the attached revised sheets.

Attachments: Revised Drawings A1.2, A1.2C, A2.2C, A7.2, A9.3, A11.6, A11.9, ID4.1, ID4.2, M1.2C, M2.1C, M2.2C, E1.12, E2.2C, E3.1, E3.1C, E3.2C, E4.2C, E6.3

By: Eric Rang

CC:



118 E. College Ave
Hopkinsville, KY 42240
Telephone: 270-881-4881

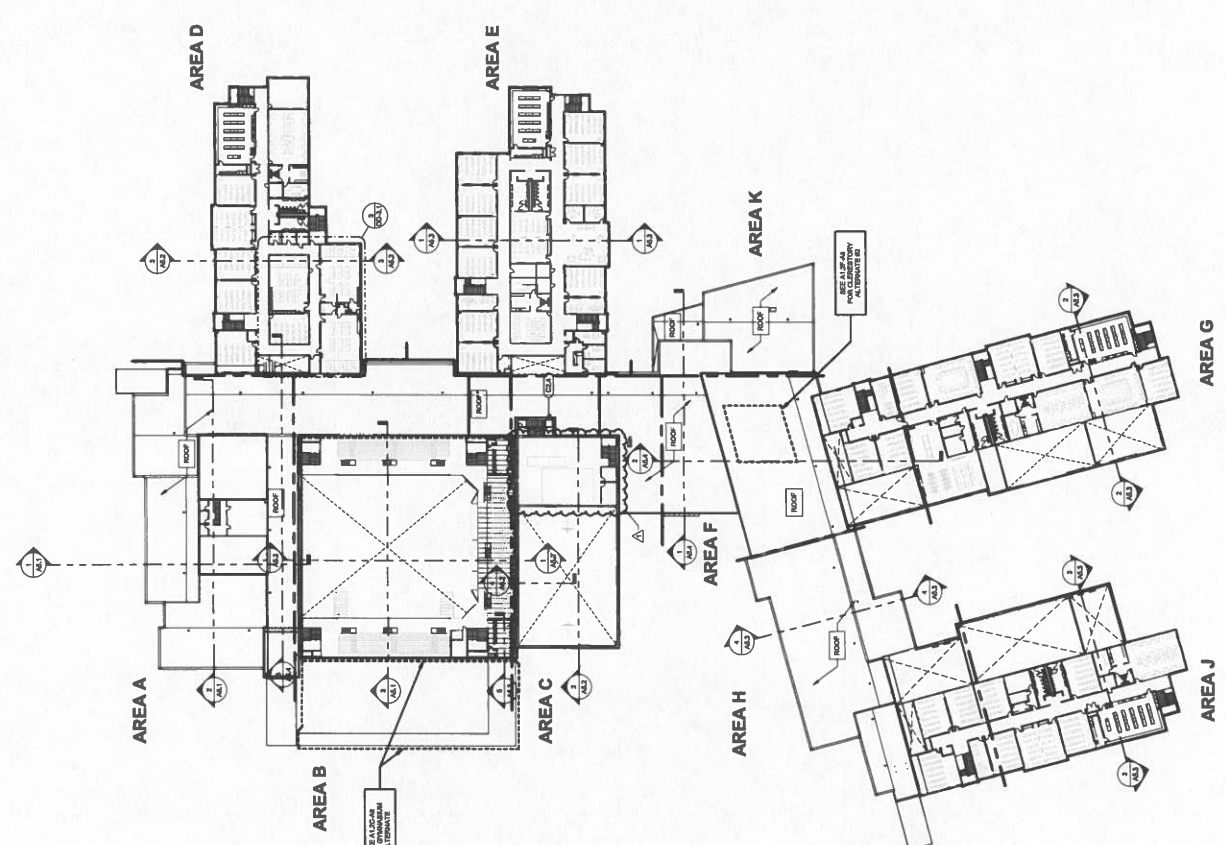


GENERAL FLOOR PLAN NOTES:

A. REFER TO OVERALL FLOOR PLAN FOR GENERAL NOTES.

FLOOR PLAN REFERENCE NOTES:

- 1 BRACKET MOUNTED FIRE EXTINGUISHER.
- 2 RECESSED FIRE EXTINGUISHER CABINET.
- 3 FLOOR MOUNTED FIRE EXTINGUISHER.
- 4 FLOOR MOUNTED FIRE EXTINGUISHER CABINET.
- 5 FLOOR MOUNTED FIRE EXTINGUISHER CABINET.
- 6 FLOOR MOUNTED FIRE EXTINGUISHER CABINET.
- 7 FLOOR MOUNTED FIRE EXTINGUISHER CABINET.
- 8 FLOOR MOUNTED FIRE EXTINGUISHER CABINET.
- 9 FLOOR MOUNTED FIRE EXTINGUISHER CABINET.
- 10 FLOOR MOUNTED FIRE EXTINGUISHER CABINET.
- 11 FLOOR MOUNTED FIRE EXTINGUISHER CABINET.
- 12 FLOOR MOUNTED FIRE EXTINGUISHER CABINET.
- 13 FLOOR MOUNTED FIRE EXTINGUISHER CABINET.
- 14 FLOOR MOUNTED FIRE EXTINGUISHER CABINET.
- 15 FLOOR MOUNTED FIRE EXTINGUISHER CABINET.
- 16 FLOOR MOUNTED FIRE EXTINGUISHER CABINET.
- 17 FLOOR MOUNTED FIRE EXTINGUISHER CABINET.
- 18 FLOOR MOUNTED FIRE EXTINGUISHER CABINET.
- 19 FLOOR MOUNTED FIRE EXTINGUISHER CABINET.
- 20 FLOOR MOUNTED FIRE EXTINGUISHER CABINET.
- 21 FLOOR MOUNTED FIRE EXTINGUISHER CABINET.
- 22 FLOOR MOUNTED FIRE EXTINGUISHER CABINET.
- 23 FLOOR MOUNTED FIRE EXTINGUISHER CABINET.
- 24 FLOOR MOUNTED FIRE EXTINGUISHER CABINET.
- 25 FLOOR MOUNTED FIRE EXTINGUISHER CABINET.
- 26 FLOOR MOUNTED FIRE EXTINGUISHER CABINET.
- 27 FLOOR MOUNTED FIRE EXTINGUISHER CABINET.
- 28 FLOOR MOUNTED FIRE EXTINGUISHER CABINET.
- 29 FLOOR MOUNTED FIRE EXTINGUISHER CABINET.
- 30 FLOOR MOUNTED FIRE EXTINGUISHER CABINET.
- 31 FLOOR MOUNTED FIRE EXTINGUISHER CABINET.
- 32 FLOOR MOUNTED FIRE EXTINGUISHER CABINET.
- 33 FLOOR MOUNTED FIRE EXTINGUISHER CABINET.
- 34 FLOOR MOUNTED FIRE EXTINGUISHER CABINET.
- 35 FLOOR MOUNTED FIRE EXTINGUISHER CABINET.
- 36 FLOOR MOUNTED FIRE EXTINGUISHER CABINET.
- 37 FLOOR MOUNTED FIRE EXTINGUISHER CABINET.
- 38 FLOOR MOUNTED FIRE EXTINGUISHER CABINET.
- 39 FLOOR MOUNTED FIRE EXTINGUISHER CABINET.
- 40 FLOOR MOUNTED FIRE EXTINGUISHER CABINET.
- 41 FLOOR MOUNTED FIRE EXTINGUISHER CABINET.
- 42 FLOOR MOUNTED FIRE EXTINGUISHER CABINET.
- 43 FLOOR MOUNTED FIRE EXTINGUISHER CABINET.
- 44 FLOOR MOUNTED FIRE EXTINGUISHER CABINET.
- 45 FLOOR MOUNTED FIRE EXTINGUISHER CABINET.
- 46 FLOOR MOUNTED FIRE EXTINGUISHER CABINET.
- 47 FLOOR MOUNTED FIRE EXTINGUISHER CABINET.
- 48 FLOOR MOUNTED FIRE EXTINGUISHER CABINET.
- 49 FLOOR MOUNTED FIRE EXTINGUISHER CABINET.
- 50 FLOOR MOUNTED FIRE EXTINGUISHER CABINET.
- 51 FLOOR MOUNTED FIRE EXTINGUISHER CABINET.
- 52 FLOOR MOUNTED FIRE EXTINGUISHER CABINET.
- 53 FLOOR MOUNTED FIRE EXTINGUISHER CABINET.
- 54 FLOOR MOUNTED FIRE EXTINGUISHER CABINET.
- 55 FLOOR MOUNTED FIRE EXTINGUISHER CABINET.
- 56 FLOOR MOUNTED FIRE EXTINGUISHER CABINET.
- 57 FLOOR MOUNTED FIRE EXTINGUISHER CABINET.
- 58 FLOOR MOUNTED FIRE EXTINGUISHER CABINET.
- 59 FLOOR MOUNTED FIRE EXTINGUISHER CABINET.
- 60 FLOOR MOUNTED FIRE EXTINGUISHER CABINET.
- 61 FLOOR MOUNTED FIRE EXTINGUISHER CABINET.
- 62 FLOOR MOUNTED FIRE EXTINGUISHER CABINET.
- 63 FLOOR MOUNTED FIRE EXTINGUISHER CABINET.
- 64 FLOOR MOUNTED FIRE EXTINGUISHER CABINET.
- 65 FLOOR MOUNTED FIRE EXTINGUISHER CABINET.
- 66 FLOOR MOUNTED FIRE EXTINGUISHER CABINET.
- 67 FLOOR MOUNTED FIRE EXTINGUISHER CABINET.
- 68 FLOOR MOUNTED FIRE EXTINGUISHER CABINET.
- 69 FLOOR MOUNTED FIRE EXTINGUISHER CABINET.
- 70 FLOOR MOUNTED FIRE EXTINGUISHER CABINET.
- 71 FLOOR MOUNTED FIRE EXTINGUISHER CABINET.
- 72 FLOOR MOUNTED FIRE EXTINGUISHER CABINET.
- 73 FLOOR MOUNTED FIRE EXTINGUISHER CABINET.
- 74 FLOOR MOUNTED FIRE EXTINGUISHER CABINET.
- 75 FLOOR MOUNTED FIRE EXTINGUISHER CABINET.
- 76 FLOOR MOUNTED FIRE EXTINGUISHER CABINET.
- 77 FLOOR MOUNTED FIRE EXTINGUISHER CABINET.
- 78 FLOOR MOUNTED FIRE EXTINGUISHER CABINET.
- 79 FLOOR MOUNTED FIRE EXTINGUISHER CABINET.
- 80 FLOOR MOUNTED FIRE EXTINGUISHER CABINET.
- 81 FLOOR MOUNTED FIRE EXTINGUISHER CABINET.
- 82 FLOOR MOUNTED FIRE EXTINGUISHER CABINET.
- 83 FLOOR MOUNTED FIRE EXTINGUISHER CABINET.
- 84 FLOOR MOUNTED FIRE EXTINGUISHER CABINET.
- 85 FLOOR MOUNTED FIRE EXTINGUISHER CABINET.
- 86 FLOOR MOUNTED FIRE EXTINGUISHER CABINET.
- 87 FLOOR MOUNTED FIRE EXTINGUISHER CABINET.
- 88 FLOOR MOUNTED FIRE EXTINGUISHER CABINET.
- 89 FLOOR MOUNTED FIRE EXTINGUISHER CABINET.
- 90 FLOOR MOUNTED FIRE EXTINGUISHER CABINET.
- 91 FLOOR MOUNTED FIRE EXTINGUISHER CABINET.
- 92 FLOOR MOUNTED FIRE EXTINGUISHER CABINET.
- 93 FLOOR MOUNTED FIRE EXTINGUISHER CABINET.
- 94 FLOOR MOUNTED FIRE EXTINGUISHER CABINET.
- 95 FLOOR MOUNTED FIRE EXTINGUISHER CABINET.
- 96 FLOOR MOUNTED FIRE EXTINGUISHER CABINET.
- 97 FLOOR MOUNTED FIRE EXTINGUISHER CABINET.
- 98 FLOOR MOUNTED FIRE EXTINGUISHER CABINET.
- 99 FLOOR MOUNTED FIRE EXTINGUISHER CABINET.
- 100 FLOOR MOUNTED FIRE EXTINGUISHER CABINET.



SECOND FLOOR PLAN
1" = 1/8" = 1'



IDE # : 183 22-104

605 WEST CHAMBERLAIN BLVD
HOPKINSVILLE, KY 40425



HAFER Construction
12440 Hwy 10
Crestwood, TN 37039
P: 615-421-1116
F: 615-421-1116
www.hafers.com



ALLIANCE Construction
118 E. Center Street
Hopkinsville, TN 40425
Telephone: 773-681-6844



bell Construction
127 Padua Circle
Hopkinsville, TN 40425
Telephone: 773-681-6844



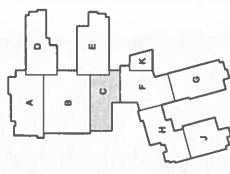
K+S Engineering, PLLC
124 N. Main Street
Crestwood, TN 37039
Telephone: 615-421-6464



WBW Construction
3000 Center Street
Hopkinsville, TN 40425
Telephone: 773-681-2222



GFI Construction
118 E. Center Street
Hopkinsville, TN 40425
Telephone: 773-681-6464



KEY PLAN

Revisions	By	Date
1		
2		
3		
4		
5		
6		
7		
8		
9		
10		

Sheet Title: SECOND FLOOR REFLECTED CEILING PLAN AREA C

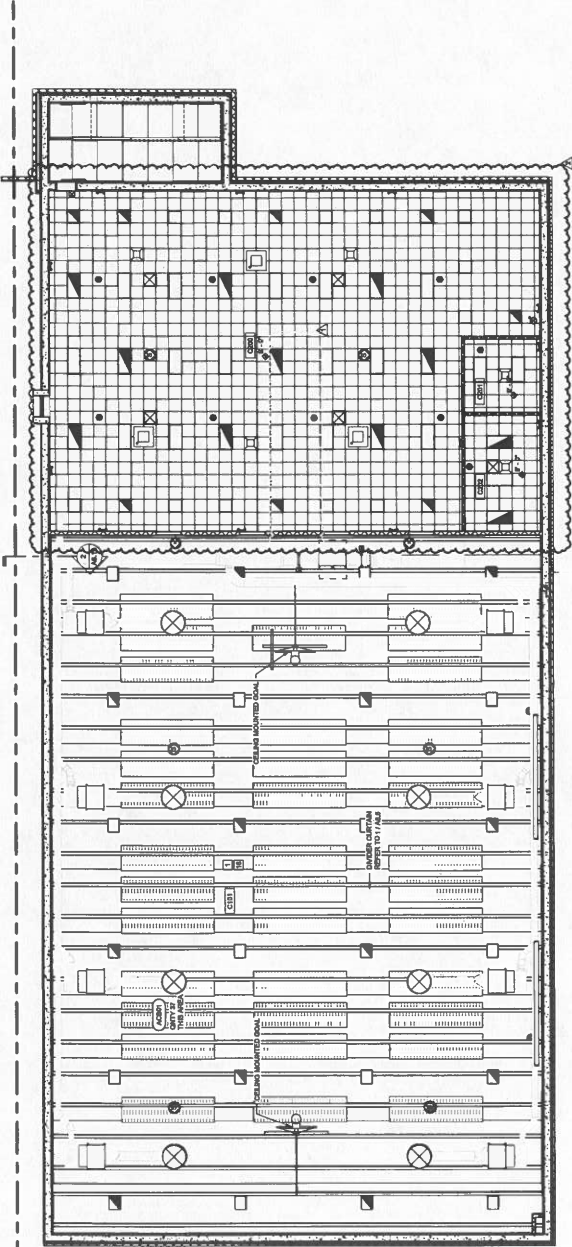
Architect's Project No.: 2106-204
Date: 5.30.17
Drawing No.: 2106-204

A2.2C

- GENERAL RCP NOTES:**
A. REFER TO OVERALL REFLECTED CEILING PLAN FOR GENERAL CEILING NOTES AND BASIC DESIGN NOTEL.
- RCP REFERENCE NOTES:**
- 1 NO CEILING EXPOSED STRUCTURE
 - 2 PRODUCT CERTAIN TRACK REFER TO DETAIL A1/A2
 - 3 CEILING HEIGHT REFERENCED FROM FIRST FLOOR LEVEL
 - 4 CEILING HEIGHT REFERENCED FROM MESSAGE LEVEL
 - 5 CEILING HEIGHT REFERENCED FROM MESSAGE LEVEL MESSAGE FACTORY
 - 6 PERimeter LIGHT FIXTURE REFER TO ELECTRICAL
 - 7 SECURITY GRILLE
 - 8 ROOF PATCH
 - 9 NOT USED
 - 10 SOUND INSULATION ON METAL DECK (BT 7.29)
 - 11 CEILING ACCESS PANEL COORDINATE WITH MECH./ELEC.
 - 12 NOT USED
 - 13 WALL CORNER WORK OVER (BT 6.01, 6.02, REFER TO A1/A2)
 - 14 COVER PANEL IN PERIPHERAL AREAS
 - 15 MECH./ELECTRICAL PENETRATIONS THROUGH CEILING COMPLETELY
 - 16 COMPOSITE METAL PANEL TYPE A
 - 17 GASKET TRACK REFER TO DETAIL A1/A13
 - 18 CONTROL JOINTS TO CONTINUE ON VERTICAL FACE OF PANEL ON ALL JOINTS AND PENETRATIONS TO MATCH ADJACENT
 - 19 GASKET JOINTS TO BE RESEAL COORDINATE WITH RETIRED ELEVATORS AND CATERGORE RECTIONS
 - 20 NOT USED
 - 21 POWER POLE
 - 22 NOT USED
 - 23 NOT USED
 - 24 NOT USED
 - 25 NOT USED
 - 26 HEAVY DUTY CEILING-RECESSED VIDEO PROJECTION LFT.
 - 27 CEILING-RECESSED PROJECTION SCREEN

REFLECTED CEILING PLAN SYMBOLS

- 2" x 2" x 1/2" RECESSED ADDITIONAL CEILING PANELS
- 2" x 2" x 1/2" RECESSED ADDITIONAL CEILING PANELS ON CEILING OVER EXISTING STRUCTURE
- PERIMETER CONCRETE
- WOOD BLAT LAMINA CEILING
- WOOD PANEL CEILING
- 2" x 4" LIGHT FIXTURE
- 2" x 2" LIGHT FIXTURE
- 3" TUBULAR DOWNLIGHT DEVICE W/ 2" x 4" LAMINATE TYPE A (DEVICE TRIMMATED TYPE B)
- RECESSED OMI LIGHT FIXTURE
- OCCUPANCY SENSOR LIGHT FIXTURE
- WALL MOUNTED EXTERIOR LIGHT FIXTURE
- SPECIALTY LIGHT FIXTURE
- PERIMETER LIGHT FIXTURE WITH BOTTOM OF CEILING RECESSED INSULATION
- DOT FIXTURE
- FINISH HEIGHT OF CEILING ABOVE A.F.F.
- HVAC RETURN AIR
- HVAC SUPPLY DIFFUSER
- ROUND DAMPERS BANDED PANEL
- CONTROL JOINT
- EXPANSION JOINT
- SPREADER
- MICROPHONE
- CEILING-RECESSED VIDEO PROJECTION LFT. IS TO BE RECESSED INTO ALL BROWNS METAL PANELS WITH INDICATED PROFILES TO METAL PANELS
- ROUND ATTENUATION INSULATION



SECOND FLOOR REFLECTED CEILING PLAN
1/8" = 1'-0"





Room No.	Description	Area
101	RECEIVING	1,200
102	OFFICE	1,200
103	OFFICE	1,200
104	OFFICE	1,200
105	OFFICE	1,200
106	OFFICE	1,200
107	OFFICE	1,200
108	OFFICE	1,200
109	OFFICE	1,200
110	OFFICE	1,200
111	OFFICE	1,200
112	OFFICE	1,200
113	OFFICE	1,200
114	OFFICE	1,200
115	OFFICE	1,200
116	OFFICE	1,200
117	OFFICE	1,200
118	OFFICE	1,200
119	OFFICE	1,200
120	OFFICE	1,200
121	OFFICE	1,200
122	OFFICE	1,200
123	OFFICE	1,200
124	OFFICE	1,200
125	OFFICE	1,200
126	OFFICE	1,200
127	OFFICE	1,200
128	OFFICE	1,200
129	OFFICE	1,200
130	OFFICE	1,200
131	OFFICE	1,200
132	OFFICE	1,200
133	OFFICE	1,200
134	OFFICE	1,200
135	OFFICE	1,200
136	OFFICE	1,200
137	OFFICE	1,200
138	OFFICE	1,200
139	OFFICE	1,200
140	OFFICE	1,200
141	OFFICE	1,200
142	OFFICE	1,200
143	OFFICE	1,200
144	OFFICE	1,200
145	OFFICE	1,200
146	OFFICE	1,200
147	OFFICE	1,200
148	OFFICE	1,200
149	OFFICE	1,200
150	OFFICE	1,200
151	OFFICE	1,200
152	OFFICE	1,200
153	OFFICE	1,200
154	OFFICE	1,200
155	OFFICE	1,200
156	OFFICE	1,200
157	OFFICE	1,200
158	OFFICE	1,200
159	OFFICE	1,200
160	OFFICE	1,200
161	OFFICE	1,200
162	OFFICE	1,200
163	OFFICE	1,200
164	OFFICE	1,200
165	OFFICE	1,200
166	OFFICE	1,200
167	OFFICE	1,200
168	OFFICE	1,200
169	OFFICE	1,200
170	OFFICE	1,200
171	OFFICE	1,200
172	OFFICE	1,200
173	OFFICE	1,200
174	OFFICE	1,200
175	OFFICE	1,200
176	OFFICE	1,200
177	OFFICE	1,200
178	OFFICE	1,200
179	OFFICE	1,200
180	OFFICE	1,200
181	OFFICE	1,200
182	OFFICE	1,200
183	OFFICE	1,200
184	OFFICE	1,200
185	OFFICE	1,200
186	OFFICE	1,200
187	OFFICE	1,200
188	OFFICE	1,200
189	OFFICE	1,200
190	OFFICE	1,200
191	OFFICE	1,200
192	OFFICE	1,200
193	OFFICE	1,200
194	OFFICE	1,200
195	OFFICE	1,200
196	OFFICE	1,200
197	OFFICE	1,200
198	OFFICE	1,200
199	OFFICE	1,200
200	OFFICE	1,200

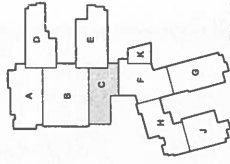
COMMENTS:
1. 18" DOOR AREA, PROVIDE GLASS THAT MEETS ALL REQUIREMENTS TO ALLOW DOORS TO OPEN FULLY.
2. 18" DOOR AREA, PROVIDE GLASS THAT MEETS ALL REQUIREMENTS TO ALLOW DOORS TO OPEN FULLY.
3. 18" DOOR AREA, PROVIDE GLASS THAT MEETS ALL REQUIREMENTS TO ALLOW DOORS TO OPEN FULLY.
4. 18" DOOR AREA, PROVIDE GLASS THAT MEETS ALL REQUIREMENTS TO ALLOW DOORS TO OPEN FULLY.
5. 18" DOOR AREA, PROVIDE GLASS THAT MEETS ALL REQUIREMENTS TO ALLOW DOORS TO OPEN FULLY.
6. 18" DOOR AREA, PROVIDE GLASS THAT MEETS ALL REQUIREMENTS TO ALLOW DOORS TO OPEN FULLY.
7. 18" DOOR AREA, PROVIDE GLASS THAT MEETS ALL REQUIREMENTS TO ALLOW DOORS TO OPEN FULLY.
8. 18" DOOR AREA, PROVIDE GLASS THAT MEETS ALL REQUIREMENTS TO ALLOW DOORS TO OPEN FULLY.
9. 18" DOOR AREA, PROVIDE GLASS THAT MEETS ALL REQUIREMENTS TO ALLOW DOORS TO OPEN FULLY.
10. 18" DOOR AREA, PROVIDE GLASS THAT MEETS ALL REQUIREMENTS TO ALLOW DOORS TO OPEN FULLY.

GENERAL NOTES:
1. ALL DOORS WITH ALUMINUM HARDWARE SHALL BE FINISHED WITH ANODIZED ALUMINUM HARDWARE.
2. ALL DOORS WITH ALUMINUM HARDWARE SHALL BE FINISHED WITH ANODIZED ALUMINUM HARDWARE.
3. ALL DOORS WITH ALUMINUM HARDWARE SHALL BE FINISHED WITH ANODIZED ALUMINUM HARDWARE.
4. ALL DOORS WITH ALUMINUM HARDWARE SHALL BE FINISHED WITH ANODIZED ALUMINUM HARDWARE.
5. ALL DOORS WITH ALUMINUM HARDWARE SHALL BE FINISHED WITH ANODIZED ALUMINUM HARDWARE.
6. ALL DOORS WITH ALUMINUM HARDWARE SHALL BE FINISHED WITH ANODIZED ALUMINUM HARDWARE.
7. ALL DOORS WITH ALUMINUM HARDWARE SHALL BE FINISHED WITH ANODIZED ALUMINUM HARDWARE.
8. ALL DOORS WITH ALUMINUM HARDWARE SHALL BE FINISHED WITH ANODIZED ALUMINUM HARDWARE.
9. ALL DOORS WITH ALUMINUM HARDWARE SHALL BE FINISHED WITH ANODIZED ALUMINUM HARDWARE.
10. ALL DOORS WITH ALUMINUM HARDWARE SHALL BE FINISHED WITH ANODIZED ALUMINUM HARDWARE.

ABBREVIATIONS:
AL ALUMINUM
AS ASBESTOS
BR BRASS
CL CLASSIFIED
GL GLASS
GR GRANITE
H HONEYCOMB
L LAMINATE
M MASONRY
N NICKEL
P PLYWOOD
S STEEL
T TITANIUM
V VINYL
W WOOD
Z ZINC
ZP ZINC PLATE
ZP-1 ZINC PLATE TYPE 1
ZP-2 ZINC PLATE TYPE 2
ZP-3 ZINC PLATE TYPE 3
ZP-4 ZINC PLATE TYPE 4
ZP-5 ZINC PLATE TYPE 5
ZP-6 ZINC PLATE TYPE 6
ZP-7 ZINC PLATE TYPE 7
ZP-8 ZINC PLATE TYPE 8
ZP-9 ZINC PLATE TYPE 9
ZP-10 ZINC PLATE TYPE 10
ZP-11 ZINC PLATE TYPE 11
ZP-12 ZINC PLATE TYPE 12
ZP-13 ZINC PLATE TYPE 13
ZP-14 ZINC PLATE TYPE 14
ZP-15 ZINC PLATE TYPE 15
ZP-16 ZINC PLATE TYPE 16
ZP-17 ZINC PLATE TYPE 17
ZP-18 ZINC PLATE TYPE 18
ZP-19 ZINC PLATE TYPE 19
ZP-20 ZINC PLATE TYPE 20
ZP-21 ZINC PLATE TYPE 21
ZP-22 ZINC PLATE TYPE 22
ZP-23 ZINC PLATE TYPE 23
ZP-24 ZINC PLATE TYPE 24
ZP-25 ZINC PLATE TYPE 25
ZP-26 ZINC PLATE TYPE 26
ZP-27 ZINC PLATE TYPE 27
ZP-28 ZINC PLATE TYPE 28
ZP-29 ZINC PLATE TYPE 29
ZP-30 ZINC PLATE TYPE 30
ZP-31 ZINC PLATE TYPE 31
ZP-32 ZINC PLATE TYPE 32
ZP-33 ZINC PLATE TYPE 33
ZP-34 ZINC PLATE TYPE 34
ZP-35 ZINC PLATE TYPE 35
ZP-36 ZINC PLATE TYPE 36
ZP-37 ZINC PLATE TYPE 37
ZP-38 ZINC PLATE TYPE 38
ZP-39 ZINC PLATE TYPE 39
ZP-40 ZINC PLATE TYPE 40
ZP-41 ZINC PLATE TYPE 41
ZP-42 ZINC PLATE TYPE 42
ZP-43 ZINC PLATE TYPE 43
ZP-44 ZINC PLATE TYPE 44
ZP-45 ZINC PLATE TYPE 45
ZP-46 ZINC PLATE TYPE 46
ZP-47 ZINC PLATE TYPE 47
ZP-48 ZINC PLATE TYPE 48
ZP-49 ZINC PLATE TYPE 49
ZP-50 ZINC PLATE TYPE 50
ZP-51 ZINC PLATE TYPE 51
ZP-52 ZINC PLATE TYPE 52
ZP-53 ZINC PLATE TYPE 53
ZP-54 ZINC PLATE TYPE 54
ZP-55 ZINC PLATE TYPE 55
ZP-56 ZINC PLATE TYPE 56
ZP-57 ZINC PLATE TYPE 57
ZP-58 ZINC PLATE TYPE 58
ZP-59 ZINC PLATE TYPE 59
ZP-60 ZINC PLATE TYPE 60
ZP-61 ZINC PLATE TYPE 61
ZP-62 ZINC PLATE TYPE 62
ZP-63 ZINC PLATE TYPE 63
ZP-64 ZINC PLATE TYPE 64
ZP-65 ZINC PLATE TYPE 65
ZP-66 ZINC PLATE TYPE 66
ZP-67 ZINC PLATE TYPE 67
ZP-68 ZINC PLATE TYPE 68
ZP-69 ZINC PLATE TYPE 69
ZP-70 ZINC PLATE TYPE 70
ZP-71 ZINC PLATE TYPE 71
ZP-72 ZINC PLATE TYPE 72
ZP-73 ZINC PLATE TYPE 73
ZP-74 ZINC PLATE TYPE 74
ZP-75 ZINC PLATE TYPE 75
ZP-76 ZINC PLATE TYPE 76
ZP-77 ZINC PLATE TYPE 77
ZP-78 ZINC PLATE TYPE 78
ZP-79 ZINC PLATE TYPE 79
ZP-80 ZINC PLATE TYPE 80
ZP-81 ZINC PLATE TYPE 81
ZP-82 ZINC PLATE TYPE 82
ZP-83 ZINC PLATE TYPE 83
ZP-84 ZINC PLATE TYPE 84
ZP-85 ZINC PLATE TYPE 85
ZP-86 ZINC PLATE TYPE 86
ZP-87 ZINC PLATE TYPE 87
ZP-88 ZINC PLATE TYPE 88
ZP-89 ZINC PLATE TYPE 89
ZP-90 ZINC PLATE TYPE 90
ZP-91 ZINC PLATE TYPE 91
ZP-92 ZINC PLATE TYPE 92
ZP-93 ZINC PLATE TYPE 93
ZP-94 ZINC PLATE TYPE 94
ZP-95 ZINC PLATE TYPE 95
ZP-96 ZINC PLATE TYPE 96
ZP-97 ZINC PLATE TYPE 97
ZP-98 ZINC PLATE TYPE 98
ZP-99 ZINC PLATE TYPE 99
ZP-100 ZINC PLATE TYPE 100

DOOR SCHEDULE - AREA D

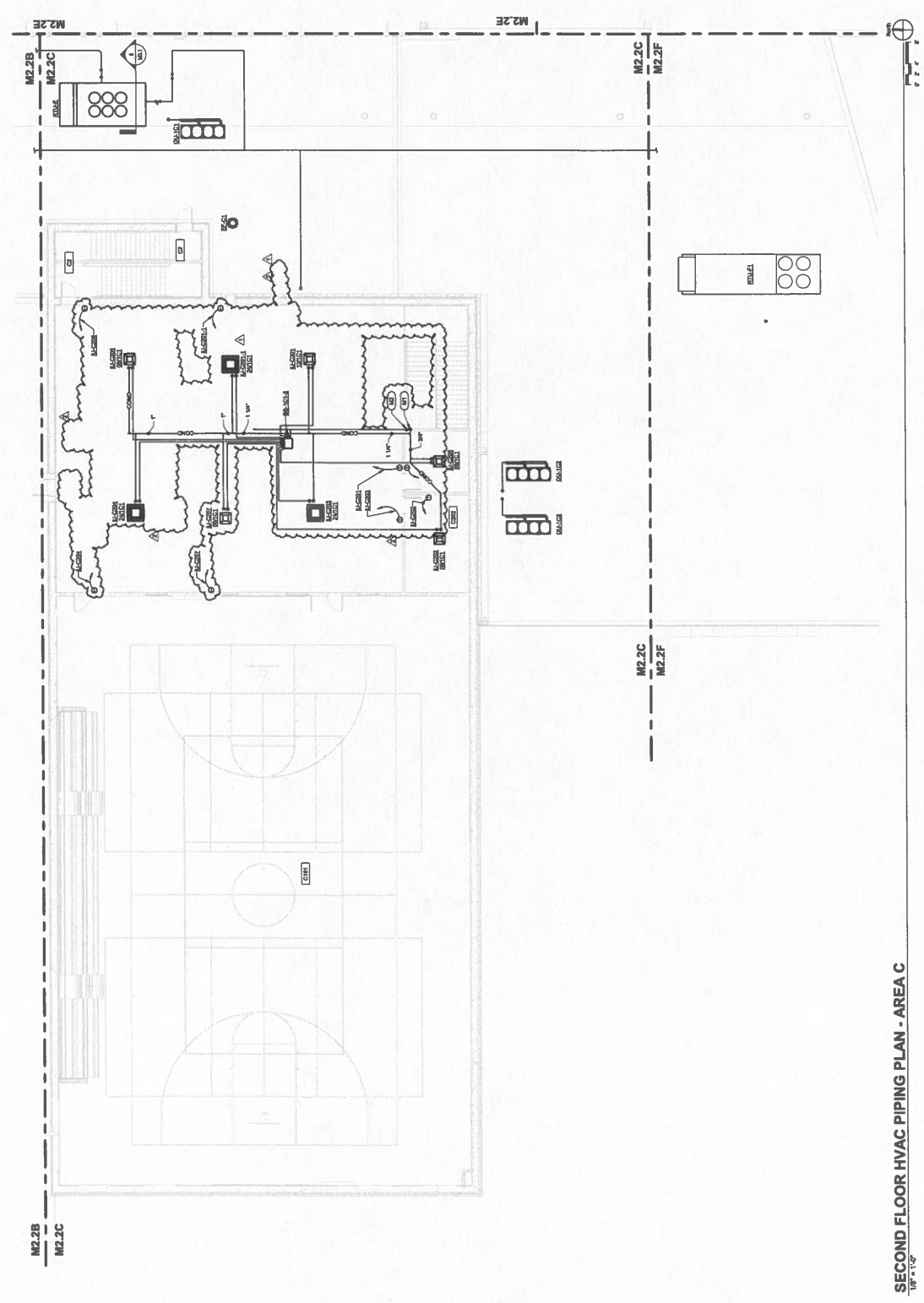
Door Number	Fire Rating	Type	Door Data			Frame Data			Height	Thickness	Glass	Type	Material	Jamb	Depth	Hardware Set	Comments	Door Number
			Width	Material	Type	Material	Head	Lead										
101	AD	F	36"	AL	AD	AL	AD	AD	36"	1 1/2"	GL	GL	AL	AD	AD	AD	101	
102	AD	F	36"	AL	AD	AL	AD	AD	36"	1 1/2"	GL	GL	AL	AD	AD	AD	102	
103	AD	F	36"	AL	AD	AL	AD	AD	36"	1 1/2"	GL	GL	AL	AD	AD	AD	103	
104	AD	F	36"	AL	AD	AL	AD	AD	36"	1 1/2"	GL	GL	AL	AD	AD	AD	104	
105	AD	F	36"	AL	AD	AL	AD	AD	36"	1 1/2"	GL	GL	AL	AD	AD	AD	105	
106	AD	F	36"	AL	AD	AL	AD	AD	36"	1 1/2"	GL	GL	AL	AD	AD	AD	106	
107	AD	F	36"	AL	AD	AL	AD	AD	36"	1 1/2"	GL	GL	AL	AD	AD	AD	107	
108	AD	F	36"	AL	AD	AL	AD	AD	36"	1 1/2"	GL	GL	AL	AD	AD	AD	108	
109	AD	F	36"	AL	AD	AL	AD	AD	36"	1 1/2"	GL	GL	AL	AD	AD	AD	109	
110	AD	F	36"	AL	AD	AL	AD	AD	36"	1 1/2"	GL	GL	AL	AD	AD	AD	110	
111	AD	F	36"	AL	AD	AL	AD	AD	36"	1 1/2"	GL	GL	AL	AD	AD	AD	111	
112	AD	F	36"	AL	AD	AL	AD	AD	36"	1 1/2"	GL	GL	AL	AD	AD	AD	112	
113	AD	F	36"	AL	AD	AL	AD	AD	36"	1 1/2"	GL	GL	AL	AD	AD	AD	113	
114	AD	F	36"	AL	AD	AL	AD	AD	36"	1 1/2"	GL	GL	AL	AD	AD	AD	114	
115	AD	F	36"	AL	AD	AL	AD	AD	36"	1 1/2"	GL	GL	AL	AD	AD	AD	115	
116	AD	F	36"	AL	AD	AL	AD	AD	36"	1 1/2"	GL	GL	AL	AD	AD	AD	116	
117	AD	F	36"	AL	AD	AL	AD	AD	36"	1 1/2"	GL	GL	AL	AD	AD	AD	117	
118	AD	F	36"	AL	AD	AL	AD	AD	36"	1 1/2"	GL	GL	AL	AD	AD	AD	118	
119	AD	F	36"	AL	AD	AL	AD	AD	36"	1 1/2"	GL	GL	AL	AD	AD	AD	119	
120	AD	F	36"	AL	AD	AL	AD	AD	36"	1 1/2"	GL	GL	AL	AD	AD	AD	120	
121	AD	F	36"	AL	AD	AL	AD	AD	36"	1 1/2"	GL	GL	AL	AD	AD	AD	121	
122	AD	F	36"	AL	AD	AL	AD	AD	36"	1 1/2"	GL	GL	AL	AD	AD	AD	122	
123	AD	F	36"	AL	AD	AL	AD	AD	36"	1 1/2"	GL	GL	AL	AD	AD	AD	123	
124	AD	F	36"	AL	AD	AL	AD	AD	36"	1 1/2"	GL	GL	AL	AD	AD	AD	124	
125	AD	F	36"	AL	AD	AL	AD	AD	36"	1 1/2"	GL	GL	AL	AD	AD	AD	125	
126	AD	F	36"	AL	AD	AL	AD	AD	36"	1 1/2"	GL	GL	AL	AD	AD	AD	126	
127	AD	F	36"	AL	AD	AL	AD	AD	36"	1 1/2"	GL	GL	AL	AD	AD	AD	127	
128	AD	F	36"	AL	AD	AL	AD	AD	36"	1 1/2"	GL	GL	AL	AD	AD	AD	128	
129	AD	F	36"	AL	AD	AL	AD	AD	36"	1 1/2"	GL	GL	AL	AD	AD	AD	129	
130	AD	F	36"	AL	AD	AL	AD	AD	36"	1 1/2"	GL	GL	AL	AD	AD	AD	130	
131	AD	F	36"	AL	AD	AL	AD	AD	36"	1 1/2"	GL	GL	AL	AD	AD	AD	131	
132	AD	F	36"	AL	AD	AL	AD	AD	36"	1 1/2"	GL	GL	AL	AD	AD	AD	132	
133	AD	F	36"	AL	AD	AL	AD	AD	36"	1 1/2"	GL	GL	AL	AD	AD	AD	133	
134	AD	F	36"	AL	AD	AL	AD	AD	36"	1 1/2"	GL	GL	AL	AD	AD	AD	134	
135	AD	F	36"	AL	AD	AL	AD	AD	36"	1 1/2"	GL	GL	AL	AD	AD	AD	135	
136	AD	F	36"	AL	AD	AL	AD	AD	36"	1 1/2"	GL	GL	AL	AD	AD	AD	136	
137	AD	F	36"	AL	AD	AL	AD	AD	36"	1 1/2"	GL	GL	AL	AD	AD	AD	137	
138	AD	F	36"	AL	AD	AL	AD	AD	36"	1 1/2"	GL	GL	AL	AD	AD	AD	138	
139	AD	F	36"	AL	AD	AL	AD	AD	36"	1 1/2"	GL	GL	AL	AD	AD	AD	139	
140	AD	F	36"	AL	AD	AL	AD	AD	36"	1 1/2"	GL	GL	AL	AD	AD	AD	140	
141	AD	F	36"	AL	AD	AL	AD	AD	36"	1 1/2"	GL	GL	AL	AD	AD	AD	141	
142	AD	F	36"	AL	AD	AL	AD	AD	36"	1 1/2"	GL	GL	AL	AD	AD	AD	142	
143	AD	F	36"	AL	AD	AL	AD	AD	36"	1 1/2"	GL	GL	AL	AD	AD	AD	143	
144	AD	F	36"	AL	AD	AL	AD	AD	36"	1 1/2"	GL	GL	AL	AD	AD	AD	144	
145	AD	F	36"	AL	AD	AL	AD	AD	36"	1 1/2"	GL	GL	AL	AD	AD	AD	145	
146	AD	F	36"	AL	AD	AL	AD	AD	36"	1 1/2"	GL	GL	AL	AD	AD	AD	146	
147	AD	F	36"	AL	AD	AL	AD	AD	36"	1 1/2"	GL	GL	AL	AD	AD	AD	147	
148	AD	F	36"	AL	AD	AL	AD	AD	36"	1 1/2"	GL	GL	AL	AD	AD	AD	148	
149	AD	F	36"	AL	AD	AL	AD	AD	36"	1 1/2"	GL	GL	AL	AD	AD	AD	149	
150	AD	F	36"	AL	AD	AL	AD	AD	36"	1 1/2"	GL	GL	AL	AD	AD			



NO.	REVISION	DATE	BY	CHKD BY
1	ISSUED FOR PERMIT	05/20/20	JM	JM
2	ISSUED FOR PERMIT	05/20/20	JM	JM
3	ISSUED FOR PERMIT	05/20/20	JM	JM
4	ISSUED FOR PERMIT	05/20/20	JM	JM
5	ISSUED FOR PERMIT	05/20/20	JM	JM
6	ISSUED FOR PERMIT	05/20/20	JM	JM
7	ISSUED FOR PERMIT	05/20/20	JM	JM
8	ISSUED FOR PERMIT	05/20/20	JM	JM
9	ISSUED FOR PERMIT	05/20/20	JM	JM
10	ISSUED FOR PERMIT	05/20/20	JM	JM
11	ISSUED FOR PERMIT	05/20/20	JM	JM
12	ISSUED FOR PERMIT	05/20/20	JM	JM
13	ISSUED FOR PERMIT	05/20/20	JM	JM
14	ISSUED FOR PERMIT	05/20/20	JM	JM
15	ISSUED FOR PERMIT	05/20/20	JM	JM
16	ISSUED FOR PERMIT	05/20/20	JM	JM
17	ISSUED FOR PERMIT	05/20/20	JM	JM
18	ISSUED FOR PERMIT	05/20/20	JM	JM
19	ISSUED FOR PERMIT	05/20/20	JM	JM
20	ISSUED FOR PERMIT	05/20/20	JM	JM

Architect's Project No: 2106-204
Date: May, 20
Drawing No: M2.2C

PLAN NOTES:
 (1) 1/4" CORNERMENT DOWN.
 (2) REPRESENT LABELS DOWN.



SECOND FLOOR HVAC PIPING PLAN - AREA C
1/8" = 1'-0"



KODE # 100 20-104

6185 F. HOPKINSVILLE, KY 40486

HAFER ELECTRIC
1188 S. Main St.
Hopkinsville, KY 40484
Phone: (502) 835-1111

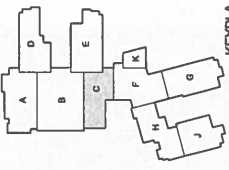
ALLIANCE ELECTRIC
1118 S. Main St.
Hopkinsville, KY 40484
Phone: (502) 835-1111

belle ELECTRIC
1118 S. Main St.
Hopkinsville, KY 40484
Phone: (502) 835-1111

K'S Engineering, PLLC
1118 S. Main St.
Hopkinsville, KY 40484
Phone: (502) 835-1111

WBM ELECTRIC
1118 S. Main St.
Hopkinsville, KY 40484
Phone: (502) 835-1111

GT
1118 S. Main St.
Hopkinsville, KY 40484
Phone: (502) 835-1111



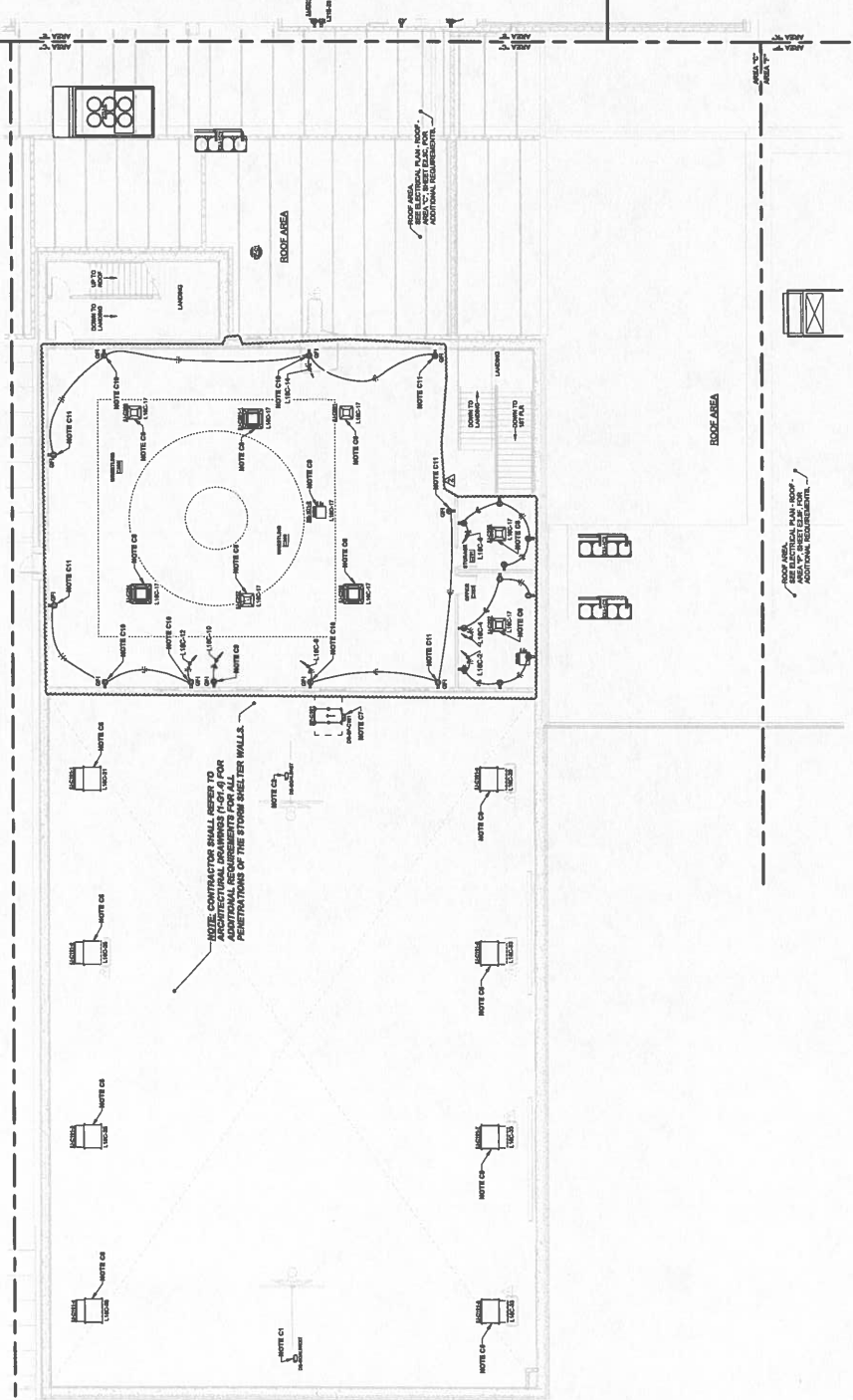
KEYPLAN

REVISION	DATE	BY	DESCRIPTION
1			ISSUED FOR PERMITTING
2			
3			
4			
5			
6			
7			
8			
9			
10			
11			
12			
13			
14			
15			
16			
17			
18			
19			
20			

POWER PLAN - SECOND FLOOR - AREA "C"
Architect's Project No: 2106-204
Date: May, 20
Drawing No: 2106-204

E2.2C

- NOTES (SECOND FLOOR POWER PLAN - AREA "C"):**
- C1.** PROVIDE 300V FUSIBLE SAFETY DISCONNECT SWITCH IN VISIBLE LOCATION TO EACH BRANCH CIRCUIT TO BE INSTALLED WITHIN WALL AT BOTTOM OF MAIN FLOOR RISE. PROVIDE 1/2" X 1/2" X 1/2" METAL JUNCTION BOX FOR EACH DISCONNECT SWITCH. PROVIDE REQUIRED CLEARANCE TO THE RIGHT CONTROL SERVICE FOR MANUFACTURER'S RECOMMENDED COMPONENTS. THE REQUIRED MANUFACTURER'S RECOMMENDED COMPONENTS TO BE INSTALLED AS SHOWN ON THESE PLANS AT THE ABOVE ELEVATION. ALL ELECTRICAL WORK SHALL BE IN ACCORDANCE WITH THE NATIONAL ELECTRICAL CODE (NEC) AND ALL OTHER REGULATIONS. THE CONTRACTOR SHALL BE RESPONSIBLE FOR VERIFYING THE MANUFACTURER'S RECOMMENDED COMPONENTS.
- C2.** PROVIDE 300V FUSIBLE SAFETY DISCONNECT SWITCH IN VISIBLE LOCATION TO EACH BRANCH CIRCUIT TO BE INSTALLED WITHIN WALL AT BOTTOM OF MAIN FLOOR RISE. PROVIDE 1/2" X 1/2" X 1/2" METAL JUNCTION BOX FOR EACH DISCONNECT SWITCH. PROVIDE REQUIRED CLEARANCE TO THE RIGHT CONTROL SERVICE FOR MANUFACTURER'S RECOMMENDED COMPONENTS. THE REQUIRED MANUFACTURER'S RECOMMENDED COMPONENTS TO BE INSTALLED AS SHOWN ON THESE PLANS AT THE ABOVE ELEVATION. ALL ELECTRICAL WORK SHALL BE IN ACCORDANCE WITH THE NATIONAL ELECTRICAL CODE (NEC) AND ALL OTHER REGULATIONS. THE CONTRACTOR SHALL BE RESPONSIBLE FOR VERIFYING THE MANUFACTURER'S RECOMMENDED COMPONENTS.
- C3.** PROVIDE 300V FUSIBLE SAFETY DISCONNECT SWITCH IN VISIBLE LOCATION TO EACH BRANCH CIRCUIT TO BE INSTALLED WITHIN WALL AT BOTTOM OF MAIN FLOOR RISE. PROVIDE 1/2" X 1/2" X 1/2" METAL JUNCTION BOX FOR EACH DISCONNECT SWITCH. PROVIDE REQUIRED CLEARANCE TO THE RIGHT CONTROL SERVICE FOR MANUFACTURER'S RECOMMENDED COMPONENTS. THE REQUIRED MANUFACTURER'S RECOMMENDED COMPONENTS TO BE INSTALLED AS SHOWN ON THESE PLANS AT THE ABOVE ELEVATION. ALL ELECTRICAL WORK SHALL BE IN ACCORDANCE WITH THE NATIONAL ELECTRICAL CODE (NEC) AND ALL OTHER REGULATIONS. THE CONTRACTOR SHALL BE RESPONSIBLE FOR VERIFYING THE MANUFACTURER'S RECOMMENDED COMPONENTS.
- C4.** PROVIDE 300V FUSIBLE SAFETY DISCONNECT SWITCH IN VISIBLE LOCATION TO EACH BRANCH CIRCUIT TO BE INSTALLED WITHIN WALL AT BOTTOM OF MAIN FLOOR RISE. PROVIDE 1/2" X 1/2" X 1/2" METAL JUNCTION BOX FOR EACH DISCONNECT SWITCH. PROVIDE REQUIRED CLEARANCE TO THE RIGHT CONTROL SERVICE FOR MANUFACTURER'S RECOMMENDED COMPONENTS. THE REQUIRED MANUFACTURER'S RECOMMENDED COMPONENTS TO BE INSTALLED AS SHOWN ON THESE PLANS AT THE ABOVE ELEVATION. ALL ELECTRICAL WORK SHALL BE IN ACCORDANCE WITH THE NATIONAL ELECTRICAL CODE (NEC) AND ALL OTHER REGULATIONS. THE CONTRACTOR SHALL BE RESPONSIBLE FOR VERIFYING THE MANUFACTURER'S RECOMMENDED COMPONENTS.
- C5.** PROVIDE 300V FUSIBLE SAFETY DISCONNECT SWITCH IN VISIBLE LOCATION TO EACH BRANCH CIRCUIT TO BE INSTALLED WITHIN WALL AT BOTTOM OF MAIN FLOOR RISE. PROVIDE 1/2" X 1/2" X 1/2" METAL JUNCTION BOX FOR EACH DISCONNECT SWITCH. PROVIDE REQUIRED CLEARANCE TO THE RIGHT CONTROL SERVICE FOR MANUFACTURER'S RECOMMENDED COMPONENTS. THE REQUIRED MANUFACTURER'S RECOMMENDED COMPONENTS TO BE INSTALLED AS SHOWN ON THESE PLANS AT THE ABOVE ELEVATION. ALL ELECTRICAL WORK SHALL BE IN ACCORDANCE WITH THE NATIONAL ELECTRICAL CODE (NEC) AND ALL OTHER REGULATIONS. THE CONTRACTOR SHALL BE RESPONSIBLE FOR VERIFYING THE MANUFACTURER'S RECOMMENDED COMPONENTS.
- C6.** PROVIDE 300V FUSIBLE SAFETY DISCONNECT SWITCH IN VISIBLE LOCATION TO EACH BRANCH CIRCUIT TO BE INSTALLED WITHIN WALL AT BOTTOM OF MAIN FLOOR RISE. PROVIDE 1/2" X 1/2" X 1/2" METAL JUNCTION BOX FOR EACH DISCONNECT SWITCH. PROVIDE REQUIRED CLEARANCE TO THE RIGHT CONTROL SERVICE FOR MANUFACTURER'S RECOMMENDED COMPONENTS. THE REQUIRED MANUFACTURER'S RECOMMENDED COMPONENTS TO BE INSTALLED AS SHOWN ON THESE PLANS AT THE ABOVE ELEVATION. ALL ELECTRICAL WORK SHALL BE IN ACCORDANCE WITH THE NATIONAL ELECTRICAL CODE (NEC) AND ALL OTHER REGULATIONS. THE CONTRACTOR SHALL BE RESPONSIBLE FOR VERIFYING THE MANUFACTURER'S RECOMMENDED COMPONENTS.
- C7.** PROVIDE 300V FUSIBLE SAFETY DISCONNECT SWITCH IN VISIBLE LOCATION TO EACH BRANCH CIRCUIT TO BE INSTALLED WITHIN WALL AT BOTTOM OF MAIN FLOOR RISE. PROVIDE 1/2" X 1/2" X 1/2" METAL JUNCTION BOX FOR EACH DISCONNECT SWITCH. PROVIDE REQUIRED CLEARANCE TO THE RIGHT CONTROL SERVICE FOR MANUFACTURER'S RECOMMENDED COMPONENTS. THE REQUIRED MANUFACTURER'S RECOMMENDED COMPONENTS TO BE INSTALLED AS SHOWN ON THESE PLANS AT THE ABOVE ELEVATION. ALL ELECTRICAL WORK SHALL BE IN ACCORDANCE WITH THE NATIONAL ELECTRICAL CODE (NEC) AND ALL OTHER REGULATIONS. THE CONTRACTOR SHALL BE RESPONSIBLE FOR VERIFYING THE MANUFACTURER'S RECOMMENDED COMPONENTS.
- C8.** PROVIDE 300V FUSIBLE SAFETY DISCONNECT SWITCH IN VISIBLE LOCATION TO EACH BRANCH CIRCUIT TO BE INSTALLED WITHIN WALL AT BOTTOM OF MAIN FLOOR RISE. PROVIDE 1/2" X 1/2" X 1/2" METAL JUNCTION BOX FOR EACH DISCONNECT SWITCH. PROVIDE REQUIRED CLEARANCE TO THE RIGHT CONTROL SERVICE FOR MANUFACTURER'S RECOMMENDED COMPONENTS. THE REQUIRED MANUFACTURER'S RECOMMENDED COMPONENTS TO BE INSTALLED AS SHOWN ON THESE PLANS AT THE ABOVE ELEVATION. ALL ELECTRICAL WORK SHALL BE IN ACCORDANCE WITH THE NATIONAL ELECTRICAL CODE (NEC) AND ALL OTHER REGULATIONS. THE CONTRACTOR SHALL BE RESPONSIBLE FOR VERIFYING THE MANUFACTURER'S RECOMMENDED COMPONENTS.
- C9.** PROVIDE 300V FUSIBLE SAFETY DISCONNECT SWITCH IN VISIBLE LOCATION TO EACH BRANCH CIRCUIT TO BE INSTALLED WITHIN WALL AT BOTTOM OF MAIN FLOOR RISE. PROVIDE 1/2" X 1/2" X 1/2" METAL JUNCTION BOX FOR EACH DISCONNECT SWITCH. PROVIDE REQUIRED CLEARANCE TO THE RIGHT CONTROL SERVICE FOR MANUFACTURER'S RECOMMENDED COMPONENTS. THE REQUIRED MANUFACTURER'S RECOMMENDED COMPONENTS TO BE INSTALLED AS SHOWN ON THESE PLANS AT THE ABOVE ELEVATION. ALL ELECTRICAL WORK SHALL BE IN ACCORDANCE WITH THE NATIONAL ELECTRICAL CODE (NEC) AND ALL OTHER REGULATIONS. THE CONTRACTOR SHALL BE RESPONSIBLE FOR VERIFYING THE MANUFACTURER'S RECOMMENDED COMPONENTS.
- C10.** PROVIDE 300V FUSIBLE SAFETY DISCONNECT SWITCH IN VISIBLE LOCATION TO EACH BRANCH CIRCUIT TO BE INSTALLED WITHIN WALL AT BOTTOM OF MAIN FLOOR RISE. PROVIDE 1/2" X 1/2" X 1/2" METAL JUNCTION BOX FOR EACH DISCONNECT SWITCH. PROVIDE REQUIRED CLEARANCE TO THE RIGHT CONTROL SERVICE FOR MANUFACTURER'S RECOMMENDED COMPONENTS. THE REQUIRED MANUFACTURER'S RECOMMENDED COMPONENTS TO BE INSTALLED AS SHOWN ON THESE PLANS AT THE ABOVE ELEVATION. ALL ELECTRICAL WORK SHALL BE IN ACCORDANCE WITH THE NATIONAL ELECTRICAL CODE (NEC) AND ALL OTHER REGULATIONS. THE CONTRACTOR SHALL BE RESPONSIBLE FOR VERIFYING THE MANUFACTURER'S RECOMMENDED COMPONENTS.
- C11.** PROVIDE 300V FUSIBLE SAFETY DISCONNECT SWITCH IN VISIBLE LOCATION TO EACH BRANCH CIRCUIT TO BE INSTALLED WITHIN WALL AT BOTTOM OF MAIN FLOOR RISE. PROVIDE 1/2" X 1/2" X 1/2" METAL JUNCTION BOX FOR EACH DISCONNECT SWITCH. PROVIDE REQUIRED CLEARANCE TO THE RIGHT CONTROL SERVICE FOR MANUFACTURER'S RECOMMENDED COMPONENTS. THE REQUIRED MANUFACTURER'S RECOMMENDED COMPONENTS TO BE INSTALLED AS SHOWN ON THESE PLANS AT THE ABOVE ELEVATION. ALL ELECTRICAL WORK SHALL BE IN ACCORDANCE WITH THE NATIONAL ELECTRICAL CODE (NEC) AND ALL OTHER REGULATIONS. THE CONTRACTOR SHALL BE RESPONSIBLE FOR VERIFYING THE MANUFACTURER'S RECOMMENDED COMPONENTS.



POWER PLAN - SECOND FLOOR - AREA "C"
1/8" = 1'-0"

Logos for subcontractors: ALLIANCE, bell, K/S Engineering, LLC, WBW, GT, and KEYLA.

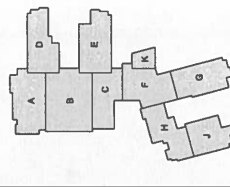


Table with columns for Description, Quantity, Unit, and Price. Includes sections for Electrical and Mechanical.

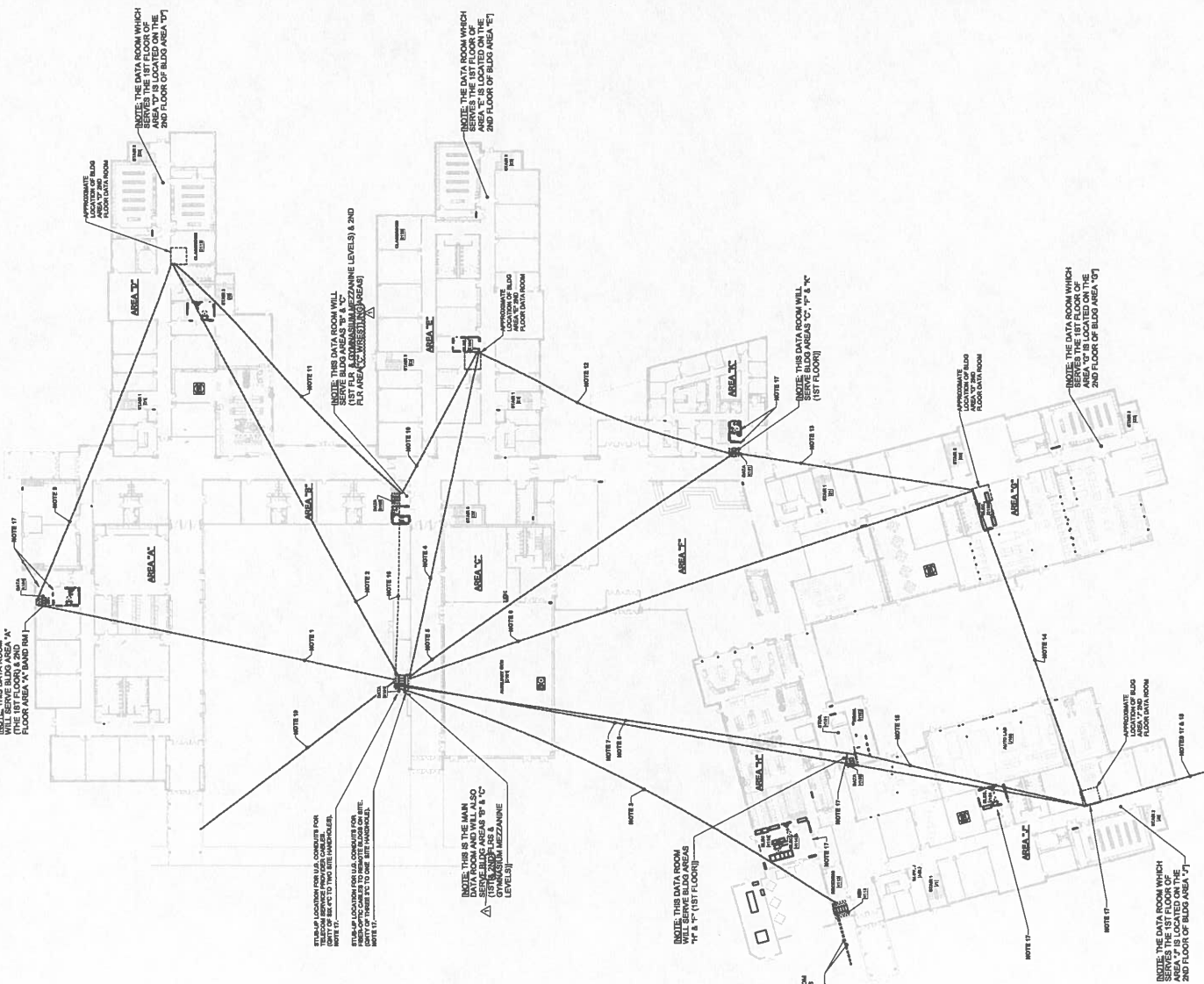
GENERAL NOTES: 01. REFER TO THE PROJECT MANUAL, DIVISION 27 SPECIFICATIONS FOR THE INSTALLED DATA CORDING SYSTEMS FOR ADDITIONAL REQUIREMENTS.

NOTES: 01. PROVIDE A QUANTITY OF TWO (2) CONDUIT ROUTED BELOW GRADE FROM THE MAIN DATA ROOM TO EACH DATA ROOM.

02. PROVIDE ONE (1) CONDUIT ROUTED BELOW GRADE FROM THE MAIN DATA ROOM TO EACH DATA ROOM. PROVIDE ONE (1) CONDUIT ROUTED BELOW GRADE FROM THE MAIN DATA ROOM TO EACH DATA ROOM.

03. PROVIDE ONE (1) CONDUIT ROUTED BELOW GRADE FROM THE MAIN DATA ROOM TO EACH DATA ROOM. PROVIDE ONE (1) CONDUIT ROUTED BELOW GRADE FROM THE MAIN DATA ROOM TO EACH DATA ROOM.

04. PROVIDE ONE (1) CONDUIT ROUTED BELOW GRADE FROM THE MAIN DATA ROOM TO EACH DATA ROOM. PROVIDE ONE (1) CONDUIT ROUTED BELOW GRADE FROM THE MAIN DATA ROOM TO EACH DATA ROOM.





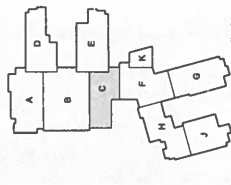
ALLIANCE
118 S. Campbell Blvd
Hopkinsville, KY 42420
Telephone: 774-61-086

bell
127 Farrow Drive
Hopkinsville, KY 42420
Telephone: 774-66-046

K&S Engineering, PLLC
204 Williams Drive
Hopkinsville, KY 42420
Telephone: 684-67-000

WBW
1000 S. Campbell Blvd
Hopkinsville, KY 42420
Telephone: 774-66-020

GT
City Package and Equipment Co.
1000 S. Campbell Blvd
Hopkinsville, KY 42420
Telephone: 618-67-007



NO.	DESCRIPTION	DATE
1	ISSUED FOR PERMIT	11/19/20
2	REVISED	
3	REVISED	
4	REVISED	
5	REVISED	
6	REVISED	
7	REVISED	
8	REVISED	
9	REVISED	
10	REVISED	
11	REVISED	
12	REVISED	
13	REVISED	
14	REVISED	
15	REVISED	
16	REVISED	
17	REVISED	
18	REVISED	
19	REVISED	
20	REVISED	

Architect Project No: 2106-204
Date: May, 20
Drawing No: E3.2C

GENERAL NOTES
(FOR ALL SYSTEMS & TECH. PLANS):
1. ALL SYSTEMS AND TECH. PLANS SHALL BE INSTALLED IN ACCORDANCE WITH THE NATIONAL FIRE PROTECTION ASSOCIATION (NFPA) 70-2017 CODE, THE NATIONAL ELECTRICAL CODE (NEC) 2017, AND THE NATIONAL COMMUNICATIONS CODE (NCC) 2017. ALL SYSTEMS SHALL BE INSTALLED IN ACCORDANCE WITH THE MANUFACTURER'S INSTALLATION INSTRUCTIONS AND THE NATIONAL FIRE PROTECTION ASSOCIATION (NFPA) 70-2017 CODE, THE NATIONAL ELECTRICAL CODE (NEC) 2017, AND THE NATIONAL COMMUNICATIONS CODE (NCC) 2017. ALL SYSTEMS SHALL BE INSTALLED IN ACCORDANCE WITH THE MANUFACTURER'S INSTALLATION INSTRUCTIONS AND THE NATIONAL FIRE PROTECTION ASSOCIATION (NFPA) 70-2017 CODE, THE NATIONAL ELECTRICAL CODE (NEC) 2017, AND THE NATIONAL COMMUNICATIONS CODE (NCC) 2017.

GENERAL NOTES
(FOR ALL SYSTEMS & TECH. PLANS):
2. ALL SYSTEMS AND TECH. PLANS SHALL BE INSTALLED IN ACCORDANCE WITH THE NATIONAL FIRE PROTECTION ASSOCIATION (NFPA) 70-2017 CODE, THE NATIONAL ELECTRICAL CODE (NEC) 2017, AND THE NATIONAL COMMUNICATIONS CODE (NCC) 2017. ALL SYSTEMS SHALL BE INSTALLED IN ACCORDANCE WITH THE MANUFACTURER'S INSTALLATION INSTRUCTIONS AND THE NATIONAL FIRE PROTECTION ASSOCIATION (NFPA) 70-2017 CODE, THE NATIONAL ELECTRICAL CODE (NEC) 2017, AND THE NATIONAL COMMUNICATIONS CODE (NCC) 2017.

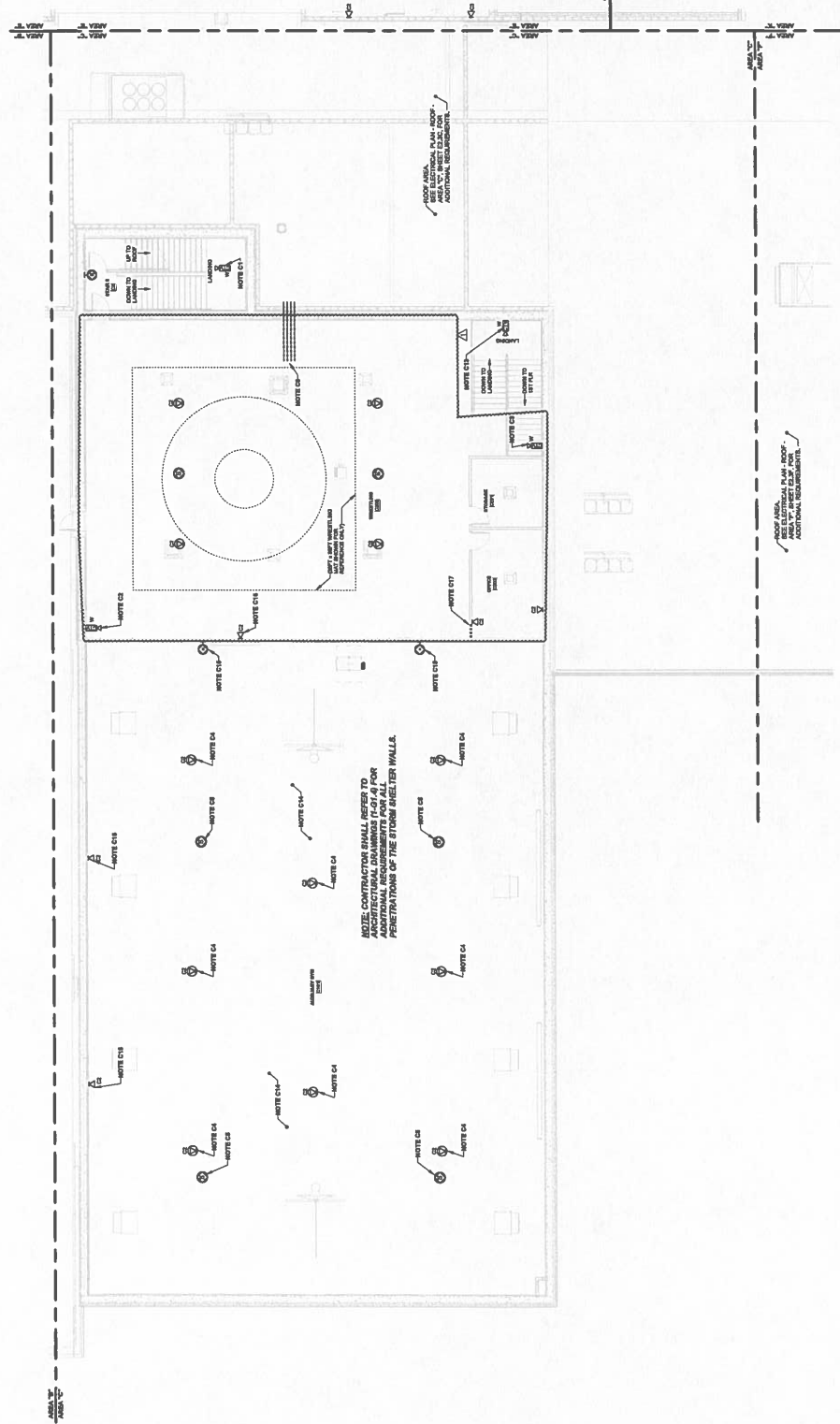
GENERAL NOTES
(FOR ALL SYSTEMS & TECH. PLANS):
3. ALL SYSTEMS AND TECH. PLANS SHALL BE INSTALLED IN ACCORDANCE WITH THE NATIONAL FIRE PROTECTION ASSOCIATION (NFPA) 70-2017 CODE, THE NATIONAL ELECTRICAL CODE (NEC) 2017, AND THE NATIONAL COMMUNICATIONS CODE (NCC) 2017. ALL SYSTEMS SHALL BE INSTALLED IN ACCORDANCE WITH THE MANUFACTURER'S INSTALLATION INSTRUCTIONS AND THE NATIONAL FIRE PROTECTION ASSOCIATION (NFPA) 70-2017 CODE, THE NATIONAL ELECTRICAL CODE (NEC) 2017, AND THE NATIONAL COMMUNICATIONS CODE (NCC) 2017.

GENERAL NOTES
(FOR ALL SYSTEMS & TECH. PLANS):
4. ALL SYSTEMS AND TECH. PLANS SHALL BE INSTALLED IN ACCORDANCE WITH THE NATIONAL FIRE PROTECTION ASSOCIATION (NFPA) 70-2017 CODE, THE NATIONAL ELECTRICAL CODE (NEC) 2017, AND THE NATIONAL COMMUNICATIONS CODE (NCC) 2017. ALL SYSTEMS SHALL BE INSTALLED IN ACCORDANCE WITH THE MANUFACTURER'S INSTALLATION INSTRUCTIONS AND THE NATIONAL FIRE PROTECTION ASSOCIATION (NFPA) 70-2017 CODE, THE NATIONAL ELECTRICAL CODE (NEC) 2017, AND THE NATIONAL COMMUNICATIONS CODE (NCC) 2017.

GENERAL NOTES
(FOR ALL SYSTEMS & TECH. PLANS):
5. ALL SYSTEMS AND TECH. PLANS SHALL BE INSTALLED IN ACCORDANCE WITH THE NATIONAL FIRE PROTECTION ASSOCIATION (NFPA) 70-2017 CODE, THE NATIONAL ELECTRICAL CODE (NEC) 2017, AND THE NATIONAL COMMUNICATIONS CODE (NCC) 2017. ALL SYSTEMS SHALL BE INSTALLED IN ACCORDANCE WITH THE MANUFACTURER'S INSTALLATION INSTRUCTIONS AND THE NATIONAL FIRE PROTECTION ASSOCIATION (NFPA) 70-2017 CODE, THE NATIONAL ELECTRICAL CODE (NEC) 2017, AND THE NATIONAL COMMUNICATIONS CODE (NCC) 2017.

GENERAL NOTES
(FOR ALL SYSTEMS & TECH. PLANS):
6. ALL SYSTEMS AND TECH. PLANS SHALL BE INSTALLED IN ACCORDANCE WITH THE NATIONAL FIRE PROTECTION ASSOCIATION (NFPA) 70-2017 CODE, THE NATIONAL ELECTRICAL CODE (NEC) 2017, AND THE NATIONAL COMMUNICATIONS CODE (NCC) 2017. ALL SYSTEMS SHALL BE INSTALLED IN ACCORDANCE WITH THE MANUFACTURER'S INSTALLATION INSTRUCTIONS AND THE NATIONAL FIRE PROTECTION ASSOCIATION (NFPA) 70-2017 CODE, THE NATIONAL ELECTRICAL CODE (NEC) 2017, AND THE NATIONAL COMMUNICATIONS CODE (NCC) 2017.

GENERAL NOTES
(FOR ALL SYSTEMS & TECH. PLANS):
7. ALL SYSTEMS AND TECH. PLANS SHALL BE INSTALLED IN ACCORDANCE WITH THE NATIONAL FIRE PROTECTION ASSOCIATION (NFPA) 70-2017 CODE, THE NATIONAL ELECTRICAL CODE (NEC) 2017, AND THE NATIONAL COMMUNICATIONS CODE (NCC) 2017. ALL SYSTEMS SHALL BE INSTALLED IN ACCORDANCE WITH THE MANUFACTURER'S INSTALLATION INSTRUCTIONS AND THE NATIONAL FIRE PROTECTION ASSOCIATION (NFPA) 70-2017 CODE, THE NATIONAL ELECTRICAL CODE (NEC) 2017, AND THE NATIONAL COMMUNICATIONS CODE (NCC) 2017.



SYSTEMS & TECHNOLOGY PLAN - SECOND FLOOR - AREA "C"
1/8" = 1'-0"

1/8" = 1'-0"

**Christian County High School
PROPOSAL REQUEST PRICING SHEET
ALLIANCE JOB #22-033**

PROPOSED CHANGE REQUEST NO. # 20 DATE 8.13.24
 DESCRIPTION Second Floor Area C add wrestling room
 CONTRACTOR Robinson Painting BID PKG. 099
 WORK DESCRIPTION Painting deduct

A. UNIT PRICING FROM FORM OF PROPOSAL

1. UNIT PRICING _____ QTY. _____ U.P. \$ - TOTAL COST
 2. UNIT PRICING _____ QTY. _____ U.P. \$ - TOTAL COST
 3. UNIT PRICING _____ QTY. _____ U.P. \$ - TOTAL COST

B. MATERIAL

1. paint ITEM 29 QTY. gal UNIT \$ 725 - 80
 2. _____ ITEM _____ QTY. _____ UNIT \$ -
 3. _____ ITEM _____ QTY. _____ UNIT \$ -

MATERIAL TOTAL \$ 725 - 80

LABOR

1. 48.95 HOURS @ 66.75 \$/HR \$ 3267 - 41
 2. _____ HOURS @ _____ \$/HR \$ -
 3. _____ HOURS @ _____ \$/HR \$ -

LABOR TOTAL \$ 3267 - 41

EQUIPMENT

EQUIPMENT TOTAL \$ Ø

MATERIAL, LABOR & EQUIPMENT SUBTOTAL \$ 3993 - 21
 15% OVERHEAD/PROFIT MARK-UP \$ 598 - 98
 DEDUCT DPO (DIRECT PURCHASE ORDER) MATERIAL \$ 725 - 80
 TOTAL ADD DEDUCT \$ 4592 - 19

NOTE: CONTRACTORS ARE TO USE UNIT PRICES WHERE APPLICABLE.

**Christian County High School
PROPOSAL REQUEST PRICING SHEET
ALLIANCE JOB #22-033**

PROPOSED CHANGE REQUEST NO. # 20 DATE 8-13-24
 DESCRIPTION Expand 2nd Floor Area C add wrestling room
 CONTRACTOR Robinson Painting BID PKG. 899
 WORK DESCRIPTION Painting & Sealed Concrete add

A. UNIT PRICING FROM FORM OF PROPOSAL

1. UNIT PRICING	_____	QTY.	_____	U.P.	_____	\$ -	TOTAL COST
2. UNIT PRICING	_____	QTY.	_____	U.P.	_____	\$ -	TOTAL COST
3. UNIT PRICING	_____	QTY.	_____	U.P.	_____	\$ -	TOTAL COST

B. MATERIAL

1. <u>Paint</u>	ITEM	<u>4.11</u>	QTY.	<u>gal</u>	UNIT	<u>\$ 94.45</u>
2. <u>Concrete Sealer</u>	ITEM	<u>18</u>	QTY.	<u>gal</u>	UNIT	<u>\$ 1746.05</u>
3. _____	ITEM	_____	QTY.	_____	UNIT	<u>\$ -</u>

MATERIAL TOTAL \$ 1840.50

LABOR

1. <u>6.77</u>	HOURS @	<u>66.75</u>	\$/HR	<u>\$ 451.89</u>
2. <u>90.16</u>	HOURS @	<u>66.75</u>	\$/HR	<u>\$ 6018.18</u>
3. _____	HOURS @	_____	\$/HR	<u>\$ -</u>

LABOR TOTAL \$ 6470.70

EQUIPMENT

EQUIPMENT TOTAL \$ 0.

MATERIAL, LABOR & EQUIPMENT SUBTOTAL	<u>\$ 8310.00</u>
15% OVERHEAD/PROFIT MARK-UP	<u>\$ 1246.50</u>
DEDUCT DPO (DIRECT PURCHASE ORDER) MATERIAL	<u>\$ 1840.50</u>
TOTAL ADD/DEDUCT	<u>\$ 9556.50</u>

NOTE: CONTRACTORS ARE TO USE UNIT PRICES WHERE APPLICABLE.

FACPAC Contract Change Order Supplemental Information Form (Ref# 60987)

Form Status: Saved

Tier 1 Project: Consolidated High School

BG Number: 22-104

Status: Active

District: Christian County (HB678) (115)

Phase: Project Initiation (View Checklist)

Contract: Robinson Painting & Acoustical Co Inc , 0099, Painting & Joist Sealants

Type: CM Bid Package

Proposed

Change Order Number	1
Time Extension Required	No
Date Of Change Order	10/14/2024
Change Order Amount To Date	Increase

Construction Contingency

Calculations below are project wide. Remaining negative Construction Contingency may require the submission of a revised BG1.

Current Approved Amount	\$6,320,436.60
Net Approved COs	\$365,699.78
Remaining After Approved COs	\$5,954,736.82
Net All COs	\$346,150.56
Remaining After All COs	\$5,974,286.04

This Requested Change Order Amount \$4,965.51

+/-

Change In A/E Fee This Change Order

+/-

Change In CM Fee This Change Order \$0.00

+/-

Remaining Construction Contingency \$5,974,286.04

Balance

Contract Change Requested By Local Board of Education

Contract Change Reason Code Expansion of Scope

Change Order Description And Justification

Painting scope revisions per PR #20, area C 2nd floor redesign.

Cost Benefit To Owner

The cost of this change order has been reviewed and determined to be reasonable.

Contract unit prices have been utilized No
to support the cost associated with this
change order.

Detailed Cost Breakdown

Contract unit prices have not been utilized, provide a detailed cost breakdown which separates labor, material, profit and overhead.

Detail Item	Amount	Percent of Total
Labor	\$3,203.29	64.51%
Materials	\$1,114.70	22.45%
Profit and Overhead	\$647.52	13.04%
Bond Insurance		0.00%
Cost Breakdown Total:	\$4,965.51	

Cost for this Change Order supported by an alternate bid or competitive price quote

Explain Why

Executed contract with contractor.

Change Order Supplemental Information Form Signature Page (Online Form Ref# 60987)

Architect

Date

Construction Manager

Date

Finance Officer

Date

Local Board of Education Designee

Date