



AIA Document G731™ – 2019

Change Order, Construction Manager as Adviser Edition

PROJECT: (name and address)

Christian County High School
5185 Fort Campbell Blvd Hopkinsville,
KY 42240

OWNER: (name and address)

Christian County Board of Education
200 Glass Avenue
Hopkinsville, KY 42240

CONTRACTOR: (name and address)

Drywall Systems Plus (formerly Lassiter
Plaster)
614 Nkorth 4th Street
Murray, KY 42071

CONTRACT INFORMATION:

Contract For: BP 092-02 Gyp
Board Assemblies
Date: September 08, 2023

ARCHITECT: (name and address)

Hafer PSC
21 Southeast Third St, Ste 800
Evansville, IN 47708

CHANGE ORDER INFORMATION:

Change Order Number: 044
Date: October 14, 2024

CONSTRUCTION MANAGER: (name and address)

Alliance Corporation
116 E. College Street
Glasgow, KY 42141

THE CONTRACT IS CHANGED AS FOLLOWS:

(Insert a detailed description of the change and, if applicable, attach or reference specific exhibits. Also include agreed upon adjustments attributable to executed Construction Change Directives.)

Deduct gypsum board framing, gypsum board installation, and finishing per PR #20, area C 2nd floor redesign.

The original Contract Sum was	\$	1,506,326.00
Net change by previously authorized Change Orders	\$	-4,167.56
The Contract Sum prior to this Change Order was	\$	1,502,158.44
The Contract Sum will be decreased by this Change Order in the amount of	\$	19,301.97
The new Contract Sum including this Change Order will be	\$	1,482,856.47

The Contract Time will be unchanged by Zero (0) days.
The Contractor's Work shall be substantially complete on .

NOTE: This Change Order does not include adjustments to the Contract Sum or Guaranteed Maximum Price, or the Contract Time, that have been authorized by Construction Change Directive until the cost and time have been agreed upon by both the Owner and Contractor, in which case a Change Order is executed to supersede the Construction Change Directive.

NOT VALID UNTIL SIGNED BY THE ARCHITECT, CONSTRUCTION MANAGER, CONTRACTOR, AND OWNER.

Hafer PSC
ARCHITECT (Firm name)

Alliance Corporation
CONSTRUCTION MANAGER (Firm name)

SIGNATURE
Eric Rang, AIA, Senior Associate
PRINTED NAME AND TITLE

SIGNATURE
Kevin Hitchel, Sr. Project Manager
PRINTED NAME AND TITLE

DATE:

DATE:

Drywall Systems Plus (formerly Lassiter Plaster)
CONTRACTOR (Firm name)

Christian County Board of Education
OWNER (Firm name)

SIGNATURE
RaShae Davis
PRINTED NAME AND TITLE

SIGNATURE
Christopher Bentzel, Superintendent
PRINTED NAME AND TITLE

DATE:

DATE:



PROPOSED CHANGE ORDER

PROJECT Christian County High School

CONTRACTOR/SUPPLIER Drywall Systems Plus

BID PACKAGE 092

DETAIL ITEM		AMOUNT
LABOR	\$	(14,342.40)
MATERIALS	\$	(4,413.42)
PROFIT & OVERHEAD	\$	(264.81)
BOND INSURANCE	\$	(281.34)
COST BREAKDOWN TOTAL	\$	(19,301.97)

DESCRIPTION

Deduct Gypsum Board Framing, Gypsum Board Installation, and Finishing per PR #20, Area C 2nd Floor
Redesign.

PR # 20 (ATTACH PR)

CHANGE ORDER INITIATED BY:

- ARCHITECT/ENGINEER
- OWNER
- CONTRACTOR
- CM
- CODE OFFICIAL
- OTHER _____

**PLEASE INCLUDE THIS FORM WITH EVERY
CHANGE ORDER.**

PROPOSAL REQUEST

Project: Christian County High School
5185 Ft. Campbell Blvd
Hopkinsville, KY 42240

PR No.: 019

Date: June 28, 2024

Owner: Christian County Public Schools
222 Glass Ave
Hopkinsville, KY 42240

Project Number: 2106-204

Contract for:

To: Kevin Hitchell
Alliance Corporation
116 E. College Steet
Glasgow, KY 42141

RE: **Area C Second Floor**

Please submit an itemized quotation for changes in the Contract Sum and/or Time incidental to proposed modifications to the Contract Documents described herein.
THIS IS NOT A CHANGE ORDER NOR A DIRECTION TO PROCEED WITH THE WORK DESCRIBED HEREIN.

Description:

Delete ROTC Suite buildout as originally shown in the bid documents. Provide a large wrestling room, office and storage room as shown in the attached revised sheets.

Attachments: Revised Drawings A1.2, A1.2C, A2.2C, A7.2, A9.3, A11.6, A11.9, ID4.1, ID4.2, M1.2C, M2.1C, M2.2C, E1.12, E2.2C, E3.1, E3.1C, E3.2C, E4.2C, E6.3

By: Eric Rang

CC:



ROE # : 89 22 104

6141 FT. CAMPBELL BLVD
HOPKINSVILLE, KY 42404

HAFFNER
1111 New Line
Road
Hopkinsville, KY 42404
Tel: 278-8462
Fax: 278-8463

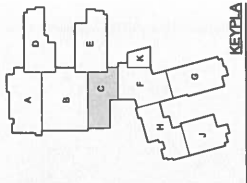
ALLIANCE
118 E. College
Hopkinsville, KY 42404
Tel: 278-4900

bell
157 Adams Drive
Hopkinsville, KY 42404
Tel: 278-6864

K&S Engineering, PLLC
231 Oldham Drive
Hopkinsville, KY 42404
Tel: 844-842-8424

WBW
1802 Adams
Hopkinsville, KY 42404
Tel: 278-899-8289

G CST Design and Engineering Co.
1011
Hopkinsville, KY 42404
Tel: 833-621-6267



Drawn By	Checked By

Sheet Title:
SECOND FLOOR PLAN -
AREA C

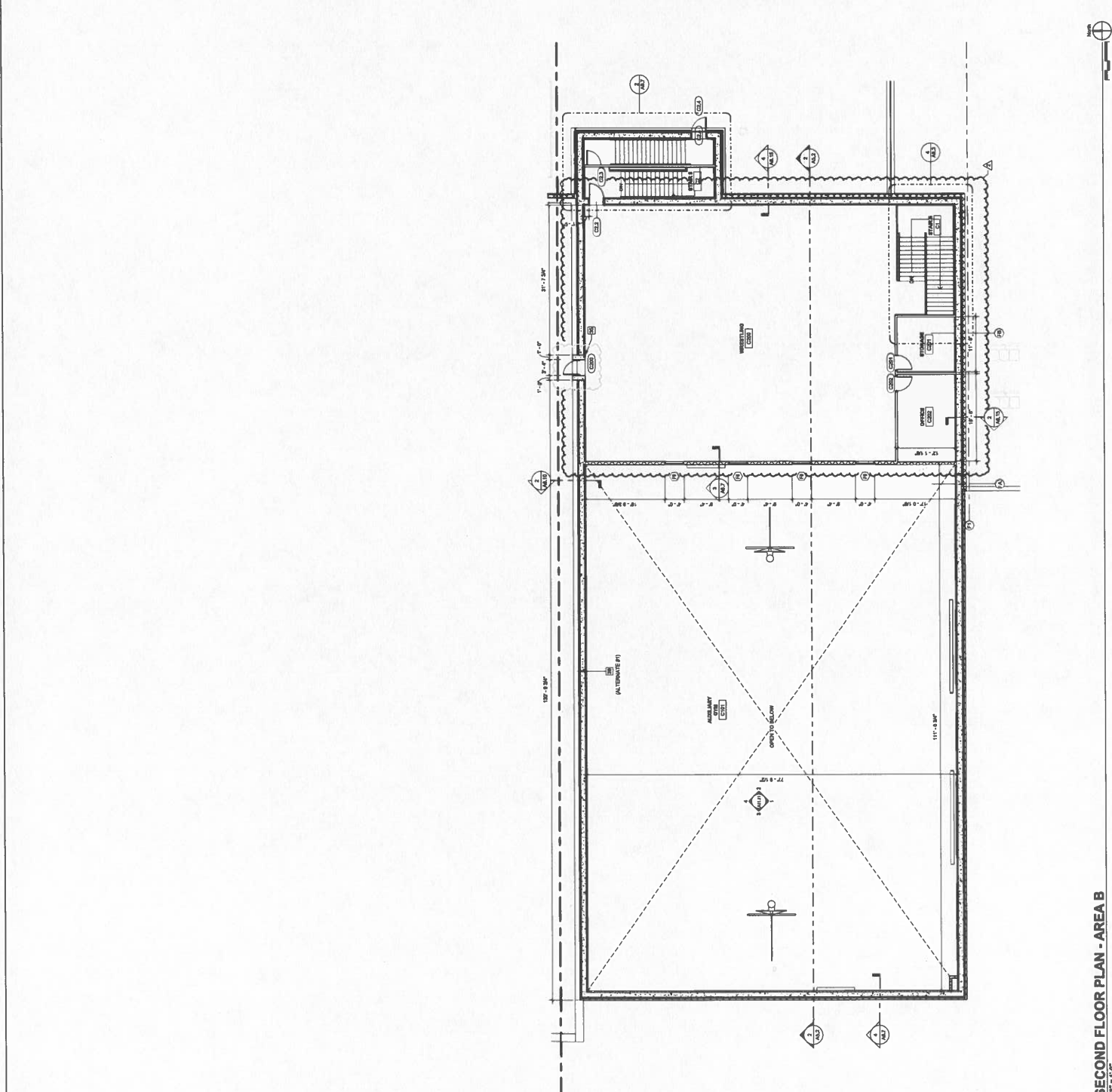
Architect's Project No.:
2106-204

Date:
5.30.

Drawing No.:

A1.2C

- GENERAL FLOOR PLAN NOTES:**
- A. REFER TO OVERALL FLOOR PLANS FOR GENERAL NOTES.
- FLOOR PLAN REFERENCE NOTES:**
- 1. BRACKET MOUNTED FIRE EXTINGUISHER.
- 2. BRACKET MOUNTED FIRE EXTINGUISHER CABINET.
- 3. PROVIDE BRACKET MOUNTED FIRE EXTINGUISHER FOR NORTHWING, RECEPTION AND RETAIL.
- 4. PROVIDE FOUNTAIN WITH BOTTLE FILLER. REFER TO FLOORING CONTRACTOR FOR ADDITIONAL INFORMATION.
- 5. PROVIDE ADDITIONAL FOUNTAIN FOR ADDITIONAL INFORMATION.
- 6. ADJUSTABLE STORAGE SHELVES.
- 7. FRONT CURTAIN AND TRUCK (19 1/2 IN)
- 8. PROVIDE ALL FURNITURE DIMENSIONS WITH 1/4 IN. PART WHERE DO NOT FIT OVER PLATFORM.
- 9. THROUGH CHAIN BOTTOM OF LOW POINT AT DISCOUNT MOUNTAIN INFORMATION RETAIL (1 A, 1 A, 1 U)
- 10. METAL LOCKER - TYPE A - OPEN AT LEFT LOCKER
- 11. METAL LOCKER - TYPE B - TWO TRIPLE METAL LOCKER
- 12. CONCRETE BENCH REFER TO DETAIL, 1 A, 1 B
- 13. METAL LOCKER - TYPE D - CONCRETE BENCH REFER TO DETAIL, 1 A, 1 B
- 14. METAL LOCKER - TYPE E - TWO TRIPLE CORRIDOR LOCKER
- 15. MAIN FOUNTAIN REFER TO PLATFORM DIMENSION.
- 16. COILING SECURITY CHAIRS (8 IN. I.D.)
- 17. FURNITURE DIMENSIONS REFER TO DETAIL, 1 A, 1 U
- 18. FURNITURE DIMENSIONS REFER TO DETAIL, 1 A, 1 U
- 19. FURNITURE DIMENSIONS REFER TO DETAIL, 1 A, 1 U
- 20. FURNITURE DIMENSIONS REFER TO DETAIL, 1 A, 1 U
- 21. FURNITURE DIMENSIONS REFER TO DETAIL, 1 A, 1 U
- 22. FURNITURE DIMENSIONS REFER TO DETAIL, 1 A, 1 U
- 23. FURNITURE DIMENSIONS REFER TO DETAIL, 1 A, 1 U
- 24. FURNITURE DIMENSIONS REFER TO DETAIL, 1 A, 1 U
- 25. FURNITURE DIMENSIONS REFER TO DETAIL, 1 A, 1 U
- 26. FURNITURE DIMENSIONS REFER TO DETAIL, 1 A, 1 U
- 27. FURNITURE DIMENSIONS REFER TO DETAIL, 1 A, 1 U
- 28. FURNITURE DIMENSIONS REFER TO DETAIL, 1 A, 1 U
- 29. FURNITURE DIMENSIONS REFER TO DETAIL, 1 A, 1 U
- 30. FURNITURE DIMENSIONS REFER TO DETAIL, 1 A, 1 U
- 31. FURNITURE DIMENSIONS REFER TO DETAIL, 1 A, 1 U
- 32. FURNITURE DIMENSIONS REFER TO DETAIL, 1 A, 1 U
- 33. FURNITURE DIMENSIONS REFER TO DETAIL, 1 A, 1 U
- 34. FURNITURE DIMENSIONS REFER TO DETAIL, 1 A, 1 U
- 35. FURNITURE DIMENSIONS REFER TO DETAIL, 1 A, 1 U
- 36. FURNITURE DIMENSIONS REFER TO DETAIL, 1 A, 1 U
- 37. FURNITURE DIMENSIONS REFER TO DETAIL, 1 A, 1 U
- 38. FURNITURE DIMENSIONS REFER TO DETAIL, 1 A, 1 U
- 39. FURNITURE DIMENSIONS REFER TO DETAIL, 1 A, 1 U
- 40. FURNITURE DIMENSIONS REFER TO DETAIL, 1 A, 1 U



SECOND FLOOR PLAN - AREA B
12' x 8.5'

GENERAL RCP NOTES:

A. REFER TO ORIGINAL REFLECTED CEILING PLAN FOR GENERAL CEILING NOTES AND REMARKS THEREON TO TYP.

RCP REFERENCE NOTES:

- 1) NO CEILING EXPOSED STRUCTURE
- 2) PRIMARY CEILING TRACK REFER TO DETAIL 4 / A2.4
- 3) CEILING HESIT REFERRED FROM FIRST FLOOR LEVEL
- 4) CEILING HESIT REFERRED FROM MEZZANINE LEVEL
- 5) CEILING HESIT REFERRED FROM SECOND FLOOR LEVEL
- 6) HESIT REFERENCE SIDE WITH FINE FOOD
- 7) HESIT REFERENCE SIDE WITH MIDDLE FOOD
- 8) HESIT REFERENCE SIDE WITH COFFEE
- 9) HESIT REFERENCE SIDE WITH RESTROOMS
- 10) HESIT REFERENCE SIDE WITH OFFICE
- 11) HESIT REFERENCE SIDE WITH MEETING ROOMS
- 12) HESIT REFERENCE SIDE WITH CONFERENCE ROOMS
- 13) HESIT REFERENCE SIDE WITH WAITING AREA
- 14) HESIT REFERENCE SIDE WITH LOBBY
- 15) HESIT REFERENCE SIDE WITH ENTRANCE
- 16) HESIT REFERENCE SIDE WITH STAIRS
- 17) HESIT REFERENCE SIDE WITH ELEVATORS
- 18) HESIT REFERENCE SIDE WITH MECHANICAL ROOMS
- 19) HESIT REFERENCE SIDE WITH ELECTRICAL ROOMS
- 20) HESIT REFERENCE SIDE WITH STORAGE ROOMS
- 21) HESIT REFERENCE SIDE WITH JANITORIAL ROOMS
- 22) HESIT REFERENCE SIDE WITH OFFICE PARTITION WALLS
- 23) HESIT REFERENCE SIDE WITH OFFICE DESKS
- 24) HESIT REFERENCE SIDE WITH OFFICE CHAIRS
- 25) HESIT REFERENCE SIDE WITH OFFICE TABLES
- 26) HESIT REFERENCE SIDE WITH OFFICE SHREDDERS
- 27) HESIT REFERENCE SIDE WITH OFFICE COPIERS
- 28) HESIT REFERENCE SIDE WITH OFFICE PRINTERS
- 29) HESIT REFERENCE SIDE WITH OFFICE FAXES
- 30) HESIT REFERENCE SIDE WITH OFFICE TELEPHONES
- 31) HESIT REFERENCE SIDE WITH OFFICE COMPUTERS
- 32) HESIT REFERENCE SIDE WITH OFFICE NETWORKS
- 33) HESIT REFERENCE SIDE WITH OFFICE SERVERS
- 34) HESIT REFERENCE SIDE WITH OFFICE MONITORS
- 35) HESIT REFERENCE SIDE WITH OFFICE KEYBOARDS
- 36) HESIT REFERENCE SIDE WITH OFFICE MICE
- 37) HESIT REFERENCE SIDE WITH OFFICE HEADSETS
- 38) HESIT REFERENCE SIDE WITH OFFICE SPEAKERS
- 39) HESIT REFERENCE SIDE WITH OFFICE HEADPHONES
- 40) HESIT REFERENCE SIDE WITH OFFICE EARPLUGS
- 41) HESIT REFERENCE SIDE WITH OFFICE EYEGLASSES
- 42) HESIT REFERENCE SIDE WITH OFFICE CONTACT LENSES
- 43) HESIT REFERENCE SIDE WITH OFFICE WEARABLES
- 44) HESIT REFERENCE SIDE WITH OFFICE ACCESSORIES
- 45) HESIT REFERENCE SIDE WITH OFFICE SUPPLIES
- 46) HESIT REFERENCE SIDE WITH OFFICE EQUIPMENT
- 47) HESIT REFERENCE SIDE WITH OFFICE FURNITURE
- 48) HESIT REFERENCE SIDE WITH OFFICE FIXTURES
- 49) HESIT REFERENCE SIDE WITH OFFICE LIGHTING
- 50) HESIT REFERENCE SIDE WITH OFFICE HVAC
- 51) HESIT REFERENCE SIDE WITH OFFICE SOUND
- 52) HESIT REFERENCE SIDE WITH OFFICE AIR QUALITY
- 53) HESIT REFERENCE SIDE WITH OFFICE ENERGY
- 54) HESIT REFERENCE SIDE WITH OFFICE SUSTAINABILITY
- 55) HESIT REFERENCE SIDE WITH OFFICE WELL-BEING
- 56) HESIT REFERENCE SIDE WITH OFFICE SAFETY
- 57) HESIT REFERENCE SIDE WITH OFFICE SECURITY
- 58) HESIT REFERENCE SIDE WITH OFFICE COMPLIANCE
- 59) HESIT REFERENCE SIDE WITH OFFICE REGULATION
- 60) HESIT REFERENCE SIDE WITH OFFICE STANDARDS
- 61) HESIT REFERENCE SIDE WITH OFFICE BEST PRACTICES
- 62) HESIT REFERENCE SIDE WITH OFFICE TRENDS
- 63) HESIT REFERENCE SIDE WITH OFFICE INNOVATION
- 64) HESIT REFERENCE SIDE WITH OFFICE LEADERSHIP
- 65) HESIT REFERENCE SIDE WITH OFFICE COLLABORATION
- 66) HESIT REFERENCE SIDE WITH OFFICE COMMUNICATION
- 67) HESIT REFERENCE SIDE WITH OFFICE TEAMWORK
- 68) HESIT REFERENCE SIDE WITH OFFICE PROBLEM SOLVING
- 69) HESIT REFERENCE SIDE WITH OFFICE DECISION MAKING
- 70) HESIT REFERENCE SIDE WITH OFFICE CHANGE MANAGEMENT
- 71) HESIT REFERENCE SIDE WITH OFFICE RISK MANAGEMENT
- 72) HESIT REFERENCE SIDE WITH OFFICE QUALITY MANAGEMENT
- 73) HESIT REFERENCE SIDE WITH OFFICE PROJECT MANAGEMENT
- 74) HESIT REFERENCE SIDE WITH OFFICE OPERATIONS MANAGEMENT
- 75) HESIT REFERENCE SIDE WITH OFFICE FINANCIAL MANAGEMENT
- 76) HESIT REFERENCE SIDE WITH OFFICE HUMAN RESOURCE MANAGEMENT
- 77) HESIT REFERENCE SIDE WITH OFFICE INFORMATION MANAGEMENT
- 78) HESIT REFERENCE SIDE WITH OFFICE SUPPLY CHAIN MANAGEMENT
- 79) HESIT REFERENCE SIDE WITH OFFICE LOGISTICS MANAGEMENT
- 80) HESIT REFERENCE SIDE WITH OFFICE FACILITIES MANAGEMENT
- 81) HESIT REFERENCE SIDE WITH OFFICE MAINTENANCE MANAGEMENT
- 82) HESIT REFERENCE SIDE WITH OFFICE REPAIR MANAGEMENT
- 83) HESIT REFERENCE SIDE WITH OFFICE REPLACEMENT MANAGEMENT
- 84) HESIT REFERENCE SIDE WITH OFFICE UPGRADE MANAGEMENT
- 85) HESIT REFERENCE SIDE WITH OFFICE MODERNIZATION MANAGEMENT
- 86) HESIT REFERENCE SIDE WITH OFFICE RECONSTRUCTION MANAGEMENT
- 87) HESIT REFERENCE SIDE WITH OFFICE DEMOLITION MANAGEMENT
- 88) HESIT REFERENCE SIDE WITH OFFICE DISPOSAL MANAGEMENT
- 89) HESIT REFERENCE SIDE WITH OFFICE RECYCLING MANAGEMENT
- 90) HESIT REFERENCE SIDE WITH OFFICE WASTE MANAGEMENT
- 91) HESIT REFERENCE SIDE WITH OFFICE PEST MANAGEMENT
- 92) HESIT REFERENCE SIDE WITH OFFICE FIRE MANAGEMENT
- 93) HESIT REFERENCE SIDE WITH OFFICE EARTHQUAKE MANAGEMENT
- 94) HESIT REFERENCE SIDE WITH OFFICE TERRORISM MANAGEMENT
- 95) HESIT REFERENCE SIDE WITH OFFICE BOMBING MANAGEMENT
- 96) HESIT REFERENCE SIDE WITH OFFICE HAZARDOUS MATERIAL MANAGEMENT
- 97) HESIT REFERENCE SIDE WITH OFFICE BIOLOGICAL MANAGEMENT
- 98) HESIT REFERENCE SIDE WITH OFFICE CHEMICAL MANAGEMENT
- 99) HESIT REFERENCE SIDE WITH OFFICE RADIOACTIVE MANAGEMENT
- 100) HESIT REFERENCE SIDE WITH OFFICE NUCLEAR MANAGEMENT



114 E. Central Street
Hopkinsville, KY 42404
Phone: 502.434.1174
Fax: 502.434.1174
www.hafervill.com



116 E. Central Street
Hopkinsville, KY 42404
Phone: 502.434.1174



157 Adams Drive
Hopkinsville, KY 42404
Phone: 502.434.1174



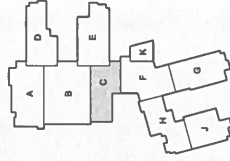
141 Highland Drive
Columbia, KY 40304
Phone: 502.434.1174



2020 Centre Street
Hopkinsville, KY 42404
Phone: 502.434.1174



4375 Dodge and Highland Cts.
Hopkinsville, KY 42404
Phone: 502.434.1174

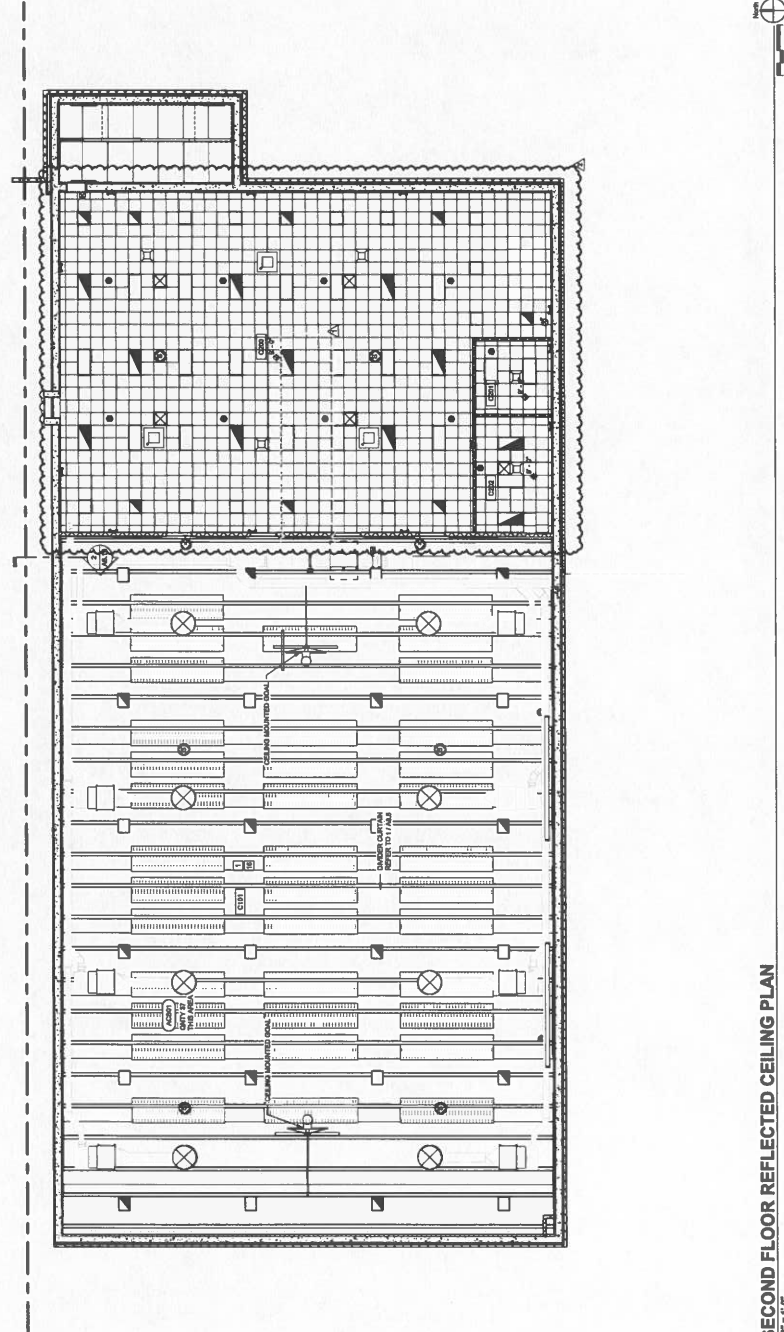


Revised:	By:	Checked:

The drawings are the property of the Architect. They shall be used only for the project for which they are prepared. They shall not be used for any other project without the written consent of the Architect. The Architect shall not be responsible for the construction of the project. The Contractor shall be responsible for the construction of the project. The Architect shall be responsible for the design of the project. The Contractor shall be responsible for the construction of the project.

SECOND FLOOR REFLECTED CEILING PLAN AREA C

Architect's Project No.: 2106-204
Date: 5.30.
Drawing No.: 1



REFLECTED CEILING PLAN SYMBOLS

2' x 2' x 4" SUSPENDED ADDITIONAL CEILING PANELS

2' x 2' x 6" SUSPENDED ADDITIONAL CEILING PANELS

CEILING PANEL TYPE (S) OR (S) WITH CEILING LIGHT FIXTURE

PRECAST CONCRETE

WOOD 8' x 4' LINEAR CEILING

WOOD PANEL CEILING

2' x 4' LIGHT FIXTURE

2' x 2' LIGHT FIXTURE

2' x 2' SQUARE DOWNLIGHT FIXTURE WITH 3' x 3' SQUARE RECESSED CAN LIGHT FIXTURE

RECESSED CAN LIGHT FIXTURE

RECESSED CAN LIGHT FIXTURE

RECESSED CAN LIGHT FIXTURE

RECESSED CAN LIGHT FIXTURE

RECESSED CAN LIGHT FIXTURE

RECESSED CAN LIGHT FIXTURE

RECESSED CAN LIGHT FIXTURE

RECESSED CAN LIGHT FIXTURE

RECESSED CAN LIGHT FIXTURE

RECESSED CAN LIGHT FIXTURE

RECESSED CAN LIGHT FIXTURE

RECESSED CAN LIGHT FIXTURE

RECESSED CAN LIGHT FIXTURE

RECESSED CAN LIGHT FIXTURE

RECESSED CAN LIGHT FIXTURE

RECESSED CAN LIGHT FIXTURE

RECESSED CAN LIGHT FIXTURE

RECESSED CAN LIGHT FIXTURE

RECESSED CAN LIGHT FIXTURE

RECESSED CAN LIGHT FIXTURE

RECESSED CAN LIGHT FIXTURE

RECESSED CAN LIGHT FIXTURE

RECESSED CAN LIGHT FIXTURE

RECESSED CAN LIGHT FIXTURE

RECESSED CAN LIGHT FIXTURE

RECESSED CAN LIGHT FIXTURE

RECESSED CAN LIGHT FIXTURE

RECESSED CAN LIGHT FIXTURE

RECESSED CAN LIGHT FIXTURE

RECESSED CAN LIGHT FIXTURE

RECESSED CAN LIGHT FIXTURE

RECESSED CAN LIGHT FIXTURE

RECESSED CAN LIGHT FIXTURE

RECESSED CAN LIGHT FIXTURE

RECESSED CAN LIGHT FIXTURE

RECESSED CAN LIGHT FIXTURE

RECESSED CAN LIGHT FIXTURE

RECESSED CAN LIGHT FIXTURE

RECESSED CAN LIGHT FIXTURE



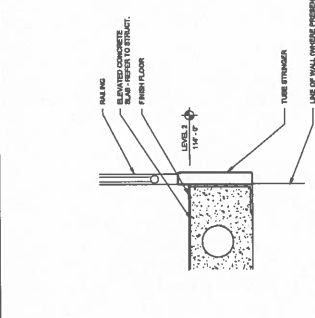
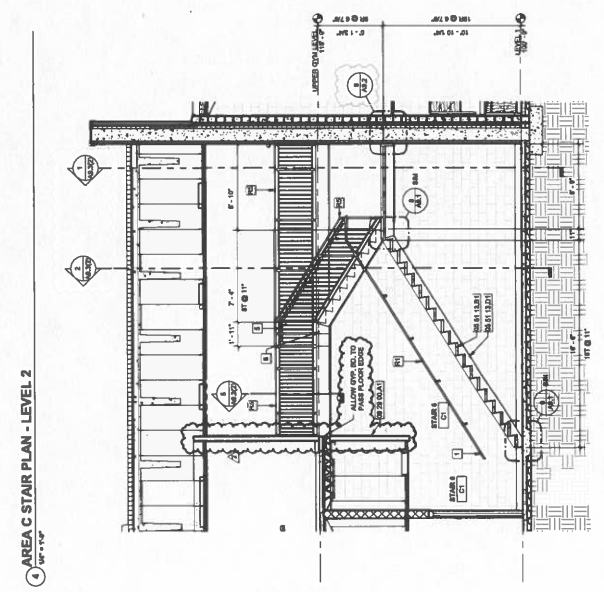
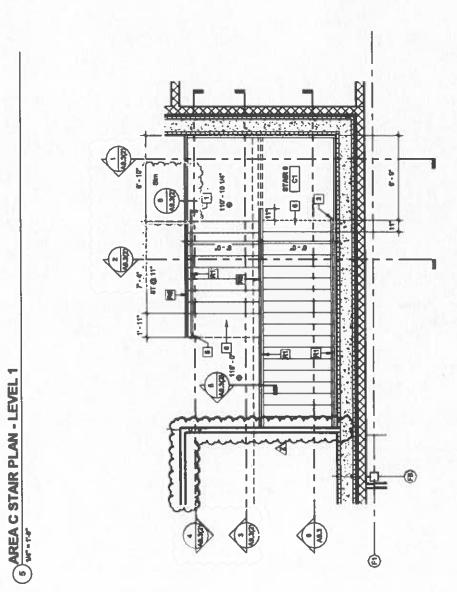
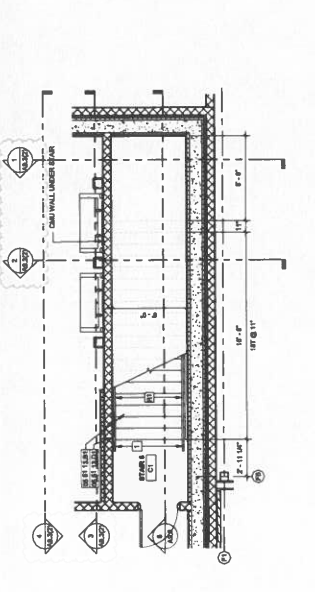
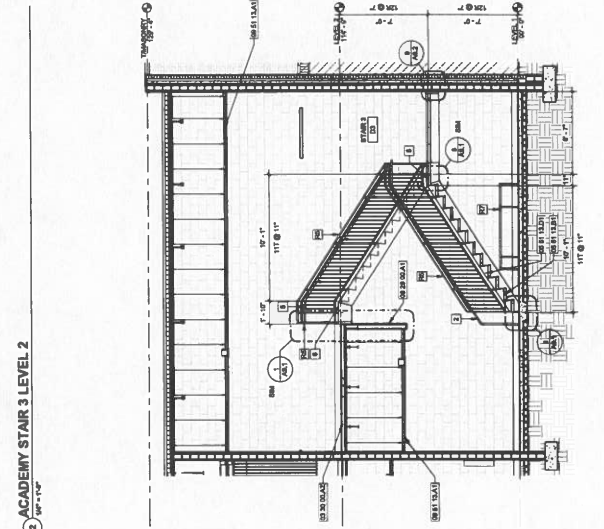
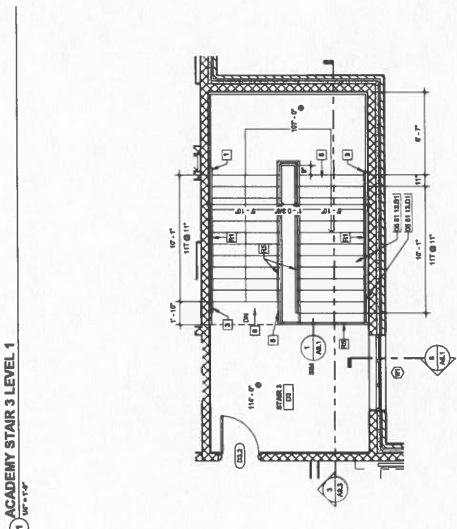
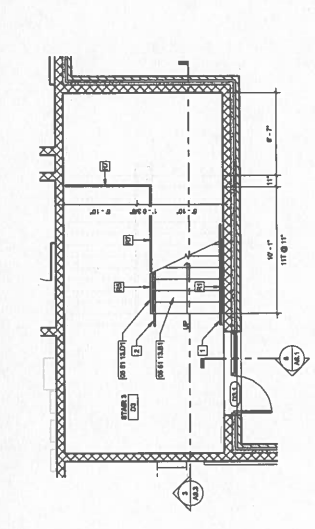
GENERAL STAIR PLAN NOTES:
 A. REFER TO OVERALL FLOOR PLANS FOR GENERAL NOTES.
 B. REFER TO DETAIL 1 FOR STAIR AND LANDING FINISHES.
 C. REFER TO DETAIL 2 FOR STAIR AND LANDING ROOF FINISHES.
 D. REFER TO STRUCTURAL DRAWINGS FOR FINAL FOUNDATION.
 E. REFER TO STRUCTURAL DRAWINGS FOR FINAL FOUNDATION.
 F. REFER TO STRUCTURAL DRAWINGS FOR FINAL FOUNDATION.
 G. REFER TO STRUCTURAL DRAWINGS FOR FINAL FOUNDATION.
 H. REFER TO STRUCTURAL DRAWINGS FOR FINAL FOUNDATION.
 I. REFER TO STRUCTURAL DRAWINGS FOR FINAL FOUNDATION.
 J. REFER TO STRUCTURAL DRAWINGS FOR FINAL FOUNDATION.
 K. REFER TO STRUCTURAL DRAWINGS FOR FINAL FOUNDATION.
 L. REFER TO STRUCTURAL DRAWINGS FOR FINAL FOUNDATION.
 M. REFER TO STRUCTURAL DRAWINGS FOR FINAL FOUNDATION.
 N. REFER TO STRUCTURAL DRAWINGS FOR FINAL FOUNDATION.
 O. REFER TO STRUCTURAL DRAWINGS FOR FINAL FOUNDATION.
 P. REFER TO STRUCTURAL DRAWINGS FOR FINAL FOUNDATION.
 Q. REFER TO STRUCTURAL DRAWINGS FOR FINAL FOUNDATION.
 R. REFER TO STRUCTURAL DRAWINGS FOR FINAL FOUNDATION.
 S. REFER TO STRUCTURAL DRAWINGS FOR FINAL FOUNDATION.
 T. REFER TO STRUCTURAL DRAWINGS FOR FINAL FOUNDATION.
 U. REFER TO STRUCTURAL DRAWINGS FOR FINAL FOUNDATION.
 V. REFER TO STRUCTURAL DRAWINGS FOR FINAL FOUNDATION.
 W. REFER TO STRUCTURAL DRAWINGS FOR FINAL FOUNDATION.
 X. REFER TO STRUCTURAL DRAWINGS FOR FINAL FOUNDATION.
 Y. REFER TO STRUCTURAL DRAWINGS FOR FINAL FOUNDATION.
 Z. REFER TO STRUCTURAL DRAWINGS FOR FINAL FOUNDATION.

STAIR PLAN REFERENCE NOTES:
 1. REFER TO DETAIL 1 FOR STAIR AND LANDING FINISHES.
 2. REFER TO DETAIL 2 FOR STAIR AND LANDING ROOF FINISHES.
 3. REFER TO DETAIL 3 FOR STAIR AND LANDING ROOF FINISHES.
 4. REFER TO DETAIL 4 FOR STAIR AND LANDING ROOF FINISHES.
 5. REFER TO DETAIL 5 FOR STAIR AND LANDING ROOF FINISHES.
 6. REFER TO DETAIL 6 FOR STAIR AND LANDING ROOF FINISHES.
 7. REFER TO DETAIL 7 FOR STAIR AND LANDING ROOF FINISHES.
 8. REFER TO DETAIL 8 FOR STAIR AND LANDING ROOF FINISHES.
 9. REFER TO DETAIL 9 FOR STAIR AND LANDING ROOF FINISHES.
 10. REFER TO DETAIL 10 FOR STAIR AND LANDING ROOF FINISHES.
 11. REFER TO DETAIL 11 FOR STAIR AND LANDING ROOF FINISHES.
 12. REFER TO DETAIL 12 FOR STAIR AND LANDING ROOF FINISHES.
 13. REFER TO DETAIL 13 FOR STAIR AND LANDING ROOF FINISHES.
 14. REFER TO DETAIL 14 FOR STAIR AND LANDING ROOF FINISHES.
 15. REFER TO DETAIL 15 FOR STAIR AND LANDING ROOF FINISHES.
 16. REFER TO DETAIL 16 FOR STAIR AND LANDING ROOF FINISHES.
 17. REFER TO DETAIL 17 FOR STAIR AND LANDING ROOF FINISHES.
 18. REFER TO DETAIL 18 FOR STAIR AND LANDING ROOF FINISHES.
 19. REFER TO DETAIL 19 FOR STAIR AND LANDING ROOF FINISHES.
 20. REFER TO DETAIL 20 FOR STAIR AND LANDING ROOF FINISHES.
 21. REFER TO DETAIL 21 FOR STAIR AND LANDING ROOF FINISHES.
 22. REFER TO DETAIL 22 FOR STAIR AND LANDING ROOF FINISHES.
 23. REFER TO DETAIL 23 FOR STAIR AND LANDING ROOF FINISHES.
 24. REFER TO DETAIL 24 FOR STAIR AND LANDING ROOF FINISHES.
 25. REFER TO DETAIL 25 FOR STAIR AND LANDING ROOF FINISHES.
 26. REFER TO DETAIL 26 FOR STAIR AND LANDING ROOF FINISHES.
 27. REFER TO DETAIL 27 FOR STAIR AND LANDING ROOF FINISHES.
 28. REFER TO DETAIL 28 FOR STAIR AND LANDING ROOF FINISHES.
 29. REFER TO DETAIL 29 FOR STAIR AND LANDING ROOF FINISHES.
 30. REFER TO DETAIL 30 FOR STAIR AND LANDING ROOF FINISHES.

RAILING TYPES
 1. WALL MOUNTED HANDRAIL REFER TO DETAIL 1 / A1
 2. FLOOR MOUNTED HANDRAIL REFER TO DETAIL 1 / A2
 3. FLOOR MOUNTED CENTER BALUS REFER TO DETAIL 1 / A3
 4. FLOOR MOUNTED CENTER BALUS REFER TO DETAIL 1 / A4
 5. FLOOR MOUNTED CENTER BALUS REFER TO DETAIL 1 / A5
 6. FLOOR MOUNTED CENTER BALUS REFER TO DETAIL 1 / A6
 7. FLOOR MOUNTED CENTER BALUS REFER TO DETAIL 1 / A7
 8. FLOOR MOUNTED CENTER BALUS REFER TO DETAIL 1 / A8
 9. FLOOR MOUNTED CENTER BALUS REFER TO DETAIL 1 / A9
 10. FLOOR MOUNTED CENTER BALUS REFER TO DETAIL 1 / A10
 11. FLOOR MOUNTED CENTER BALUS REFER TO DETAIL 1 / A11
 12. FLOOR MOUNTED CENTER BALUS REFER TO DETAIL 1 / A12
 13. FLOOR MOUNTED CENTER BALUS REFER TO DETAIL 1 / A13
 14. FLOOR MOUNTED CENTER BALUS REFER TO DETAIL 1 / A14
 15. FLOOR MOUNTED CENTER BALUS REFER TO DETAIL 1 / A15
 16. FLOOR MOUNTED CENTER BALUS REFER TO DETAIL 1 / A16
 17. FLOOR MOUNTED CENTER BALUS REFER TO DETAIL 1 / A17
 18. FLOOR MOUNTED CENTER BALUS REFER TO DETAIL 1 / A18
 19. FLOOR MOUNTED CENTER BALUS REFER TO DETAIL 1 / A19
 20. FLOOR MOUNTED CENTER BALUS REFER TO DETAIL 1 / A20
 21. FLOOR MOUNTED CENTER BALUS REFER TO DETAIL 1 / A21
 22. FLOOR MOUNTED CENTER BALUS REFER TO DETAIL 1 / A22
 23. FLOOR MOUNTED CENTER BALUS REFER TO DETAIL 1 / A23
 24. FLOOR MOUNTED CENTER BALUS REFER TO DETAIL 1 / A24
 25. FLOOR MOUNTED CENTER BALUS REFER TO DETAIL 1 / A25
 26. FLOOR MOUNTED CENTER BALUS REFER TO DETAIL 1 / A26
 27. FLOOR MOUNTED CENTER BALUS REFER TO DETAIL 1 / A27
 28. FLOOR MOUNTED CENTER BALUS REFER TO DETAIL 1 / A28
 29. FLOOR MOUNTED CENTER BALUS REFER TO DETAIL 1 / A29
 30. FLOOR MOUNTED CENTER BALUS REFER TO DETAIL 1 / A30

SHEET KEYNOTE LEGEND

Key Value	Keynote Text
1	SEE DETAIL 1
2	SEE DETAIL 2
3	SEE DETAIL 3
4	SEE DETAIL 4
5	SEE DETAIL 5
6	SEE DETAIL 6
7	SEE DETAIL 7
8	SEE DETAIL 8
9	SEE DETAIL 9
10	SEE DETAIL 10
11	SEE DETAIL 11
12	SEE DETAIL 12
13	SEE DETAIL 13
14	SEE DETAIL 14
15	SEE DETAIL 15
16	SEE DETAIL 16
17	SEE DETAIL 17
18	SEE DETAIL 18
19	SEE DETAIL 19
20	SEE DETAIL 20
21	SEE DETAIL 21
22	SEE DETAIL 22
23	SEE DETAIL 23
24	SEE DETAIL 24
25	SEE DETAIL 25
26	SEE DETAIL 26
27	SEE DETAIL 27
28	SEE DETAIL 28
29	SEE DETAIL 29
30	SEE DETAIL 30



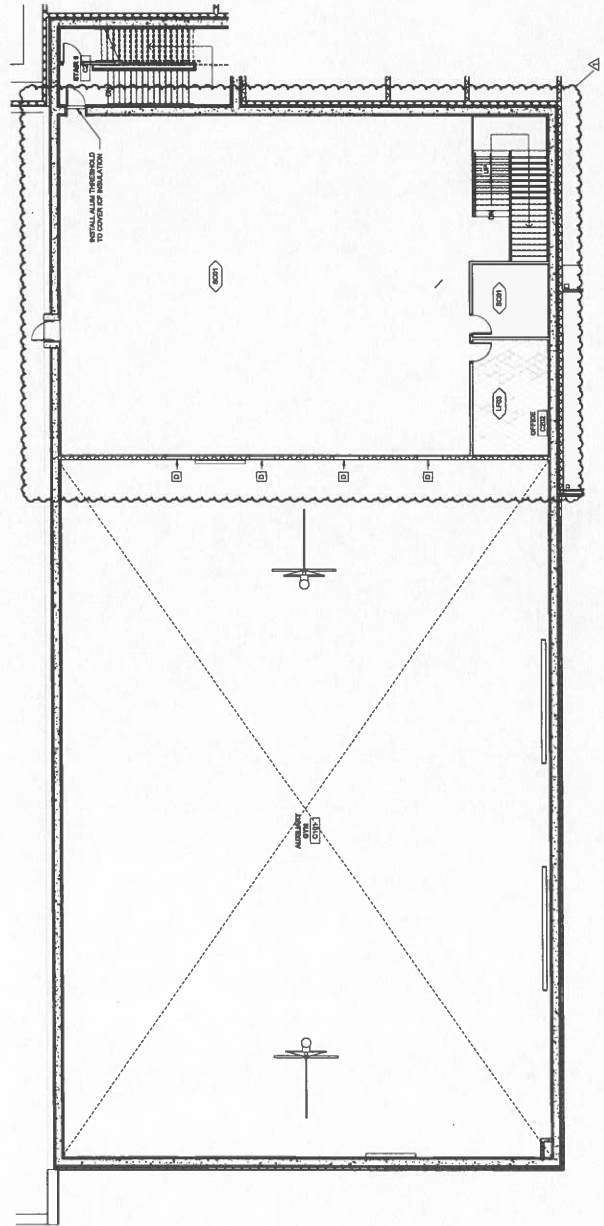
Rev.	Description	Date

SECOND FLOOR FINISH
PLAN - AREA C

Architect's Project No: 2106-204 Date: 5.30.
Drawing No: ID4.2

- GENERAL INTERIOR FINISH NOTES**
- A. ALL EXPOSED INTERIOR SURFACES AND EXPOSED INTERIOR SURFACES SHALL BE FINISHED TO MEET THE FINISH SCHEDULE.
 - B. EXPOSED INTERIOR SURFACES SHALL BE FINISHED TO MEET THE FINISH SCHEDULE. ALL EXPOSED INTERIOR SURFACES SHALL BE FINISHED TO MEET THE FINISH SCHEDULE. ALL EXPOSED INTERIOR SURFACES SHALL BE FINISHED TO MEET THE FINISH SCHEDULE.
 - C. ALL EXPOSED INTERIOR SURFACES SHALL BE FINISHED TO MEET THE FINISH SCHEDULE. ALL EXPOSED INTERIOR SURFACES SHALL BE FINISHED TO MEET THE FINISH SCHEDULE. ALL EXPOSED INTERIOR SURFACES SHALL BE FINISHED TO MEET THE FINISH SCHEDULE.
 - D. ALL EXPOSED INTERIOR SURFACES SHALL BE FINISHED TO MEET THE FINISH SCHEDULE. ALL EXPOSED INTERIOR SURFACES SHALL BE FINISHED TO MEET THE FINISH SCHEDULE. ALL EXPOSED INTERIOR SURFACES SHALL BE FINISHED TO MEET THE FINISH SCHEDULE.
 - E. ALL EXPOSED INTERIOR SURFACES SHALL BE FINISHED TO MEET THE FINISH SCHEDULE. ALL EXPOSED INTERIOR SURFACES SHALL BE FINISHED TO MEET THE FINISH SCHEDULE. ALL EXPOSED INTERIOR SURFACES SHALL BE FINISHED TO MEET THE FINISH SCHEDULE.
 - F. ALL EXPOSED INTERIOR SURFACES SHALL BE FINISHED TO MEET THE FINISH SCHEDULE. ALL EXPOSED INTERIOR SURFACES SHALL BE FINISHED TO MEET THE FINISH SCHEDULE. ALL EXPOSED INTERIOR SURFACES SHALL BE FINISHED TO MEET THE FINISH SCHEDULE.
 - G. ALL EXPOSED INTERIOR SURFACES SHALL BE FINISHED TO MEET THE FINISH SCHEDULE. ALL EXPOSED INTERIOR SURFACES SHALL BE FINISHED TO MEET THE FINISH SCHEDULE. ALL EXPOSED INTERIOR SURFACES SHALL BE FINISHED TO MEET THE FINISH SCHEDULE.
 - H. ALL EXPOSED INTERIOR SURFACES SHALL BE FINISHED TO MEET THE FINISH SCHEDULE. ALL EXPOSED INTERIOR SURFACES SHALL BE FINISHED TO MEET THE FINISH SCHEDULE. ALL EXPOSED INTERIOR SURFACES SHALL BE FINISHED TO MEET THE FINISH SCHEDULE.
 - I. ALL EXPOSED INTERIOR SURFACES SHALL BE FINISHED TO MEET THE FINISH SCHEDULE. ALL EXPOSED INTERIOR SURFACES SHALL BE FINISHED TO MEET THE FINISH SCHEDULE. ALL EXPOSED INTERIOR SURFACES SHALL BE FINISHED TO MEET THE FINISH SCHEDULE.
 - J. ALL EXPOSED INTERIOR SURFACES SHALL BE FINISHED TO MEET THE FINISH SCHEDULE. ALL EXPOSED INTERIOR SURFACES SHALL BE FINISHED TO MEET THE FINISH SCHEDULE. ALL EXPOSED INTERIOR SURFACES SHALL BE FINISHED TO MEET THE FINISH SCHEDULE.
 - K. ALL EXPOSED INTERIOR SURFACES SHALL BE FINISHED TO MEET THE FINISH SCHEDULE. ALL EXPOSED INTERIOR SURFACES SHALL BE FINISHED TO MEET THE FINISH SCHEDULE. ALL EXPOSED INTERIOR SURFACES SHALL BE FINISHED TO MEET THE FINISH SCHEDULE.
 - L. ALL EXPOSED INTERIOR SURFACES SHALL BE FINISHED TO MEET THE FINISH SCHEDULE. ALL EXPOSED INTERIOR SURFACES SHALL BE FINISHED TO MEET THE FINISH SCHEDULE. ALL EXPOSED INTERIOR SURFACES SHALL BE FINISHED TO MEET THE FINISH SCHEDULE.
 - M. ALL EXPOSED INTERIOR SURFACES SHALL BE FINISHED TO MEET THE FINISH SCHEDULE. ALL EXPOSED INTERIOR SURFACES SHALL BE FINISHED TO MEET THE FINISH SCHEDULE. ALL EXPOSED INTERIOR SURFACES SHALL BE FINISHED TO MEET THE FINISH SCHEDULE.
 - N. ALL EXPOSED INTERIOR SURFACES SHALL BE FINISHED TO MEET THE FINISH SCHEDULE. ALL EXPOSED INTERIOR SURFACES SHALL BE FINISHED TO MEET THE FINISH SCHEDULE. ALL EXPOSED INTERIOR SURFACES SHALL BE FINISHED TO MEET THE FINISH SCHEDULE.
 - O. ALL EXPOSED INTERIOR SURFACES SHALL BE FINISHED TO MEET THE FINISH SCHEDULE. ALL EXPOSED INTERIOR SURFACES SHALL BE FINISHED TO MEET THE FINISH SCHEDULE. ALL EXPOSED INTERIOR SURFACES SHALL BE FINISHED TO MEET THE FINISH SCHEDULE.
 - P. ALL EXPOSED INTERIOR SURFACES SHALL BE FINISHED TO MEET THE FINISH SCHEDULE. ALL EXPOSED INTERIOR SURFACES SHALL BE FINISHED TO MEET THE FINISH SCHEDULE. ALL EXPOSED INTERIOR SURFACES SHALL BE FINISHED TO MEET THE FINISH SCHEDULE.

- FINISH PLAN REFERENCE NOTES**
- A. FINISH
 - B. FINISH
 - C. FINISH
 - D. FINISH
 - E. FINISH
 - F. FINISH
 - G. FINISH
 - H. FINISH
 - I. FINISH
 - J. FINISH
 - K. FINISH
 - L. FINISH
 - M. FINISH
 - N. FINISH
 - O. FINISH
 - P. FINISH



SECOND FLOOR FINISH PLAN - AREA C
1/8" = 1'-0"



NOTE # 100-20-104

6148 FT. CAMPBELL BLVD.
HOPKINSVILLE, KY 42403

HAFFNER
ARCHITECTS • ENGINEERS • PLANNERS

ALLIANCE
MECHANICAL CONTRACTORS

bell
TELEPHONE SERVICE

K-S Engineering, PLLC
MECHANICAL CONTRACTORS

WBW CONSULTING
MECHANICAL CONTRACTORS

GT
MECHANICAL CONTRACTORS



KEY/PLA

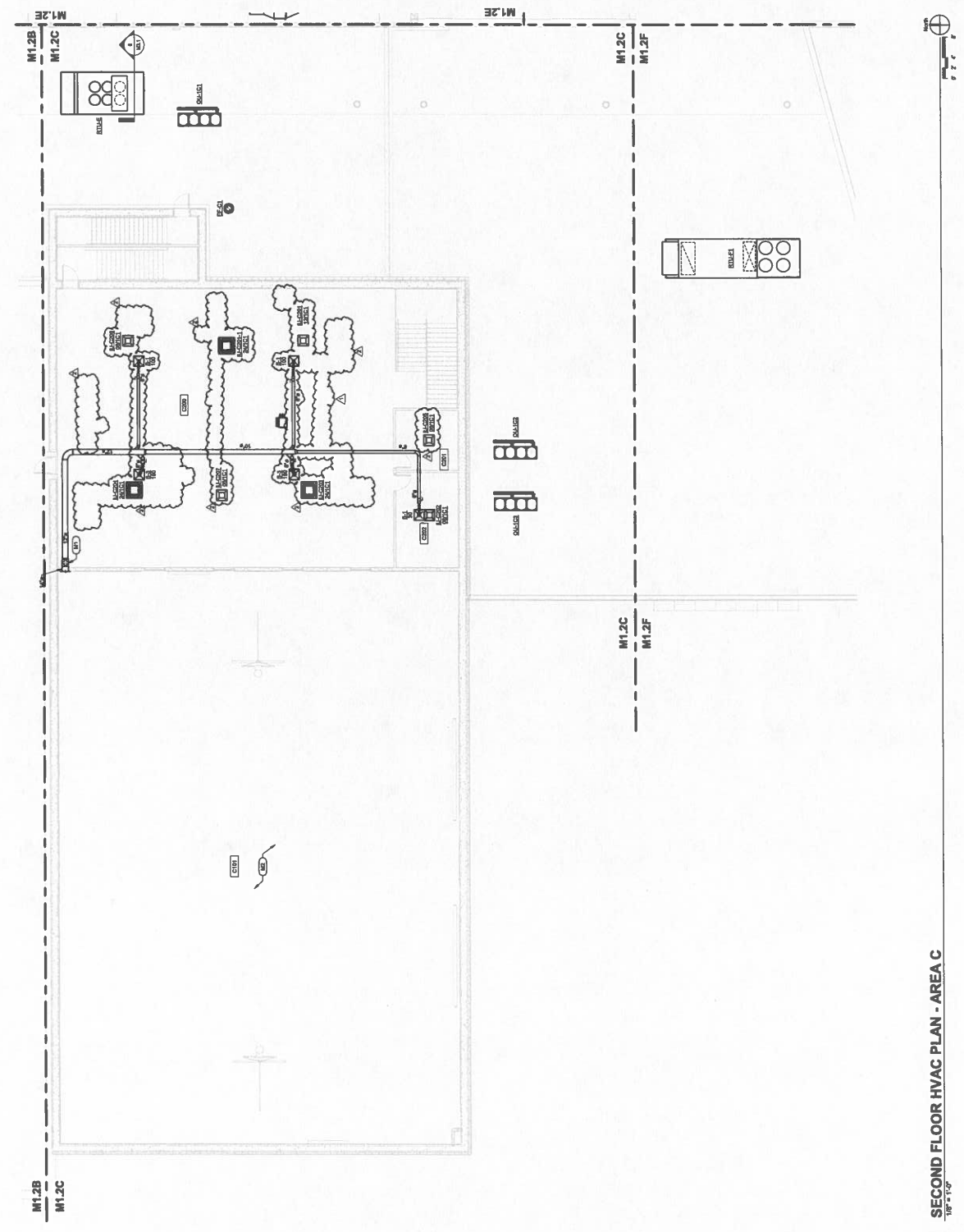


NO.	DATE	DESCRIPTION
1	01/15/20	ISSUED FOR PERMIT
2	01/20/20	ISSUED FOR CONSTRUCTION
3	01/25/20	ISSUED FOR PROJECT COMPLETION
4	02/10/20	ISSUED FOR PROJECT CLOSURE
5	02/15/20	ISSUED FOR PROJECT REVISION
6	02/20/20	ISSUED FOR PROJECT REVIEW
7	03/01/20	ISSUED FOR PROJECT APPROVAL
8	03/10/20	ISSUED FOR PROJECT SIGNATURE
9	03/20/20	ISSUED FOR PROJECT FINAL REVIEW
10	04/01/20	ISSUED FOR PROJECT CLOSURE

Architect's Project No.: 21106-204
Date: May, 20
Drawing No.: M1.2C

M1.2C

- PLAN NOTES:**
- (1) SEE SHEET M1.1C FOR CONTIGUOUS, BY SUPPLY FACTORY.
 - (2) REFER TO SHEET M1.1C FOR WORK IN THIS AREA.



SECOND FLOOR HVAC PLAN - AREA C
1/8" = 1'-0"

HAVER
1111 S. First Street
Hopkinsville, KY 42240
Tel: 502-939-4770
Fax: 502-939-4771
www.haver.com

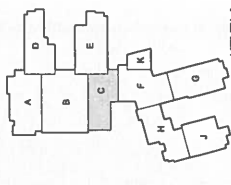
ALLIANCE
188 S. College Street
Hopkinsville, KY 42240
Telephone: 270-841-4841

bell
307 Poplar Drive
Hopkinsville, KY 42240
Telephone: 270-846-6464

KS Engineering, PLLC
229 Williams Drive
Hopkinsville, KY 42240
Telephone: 812-454-2622

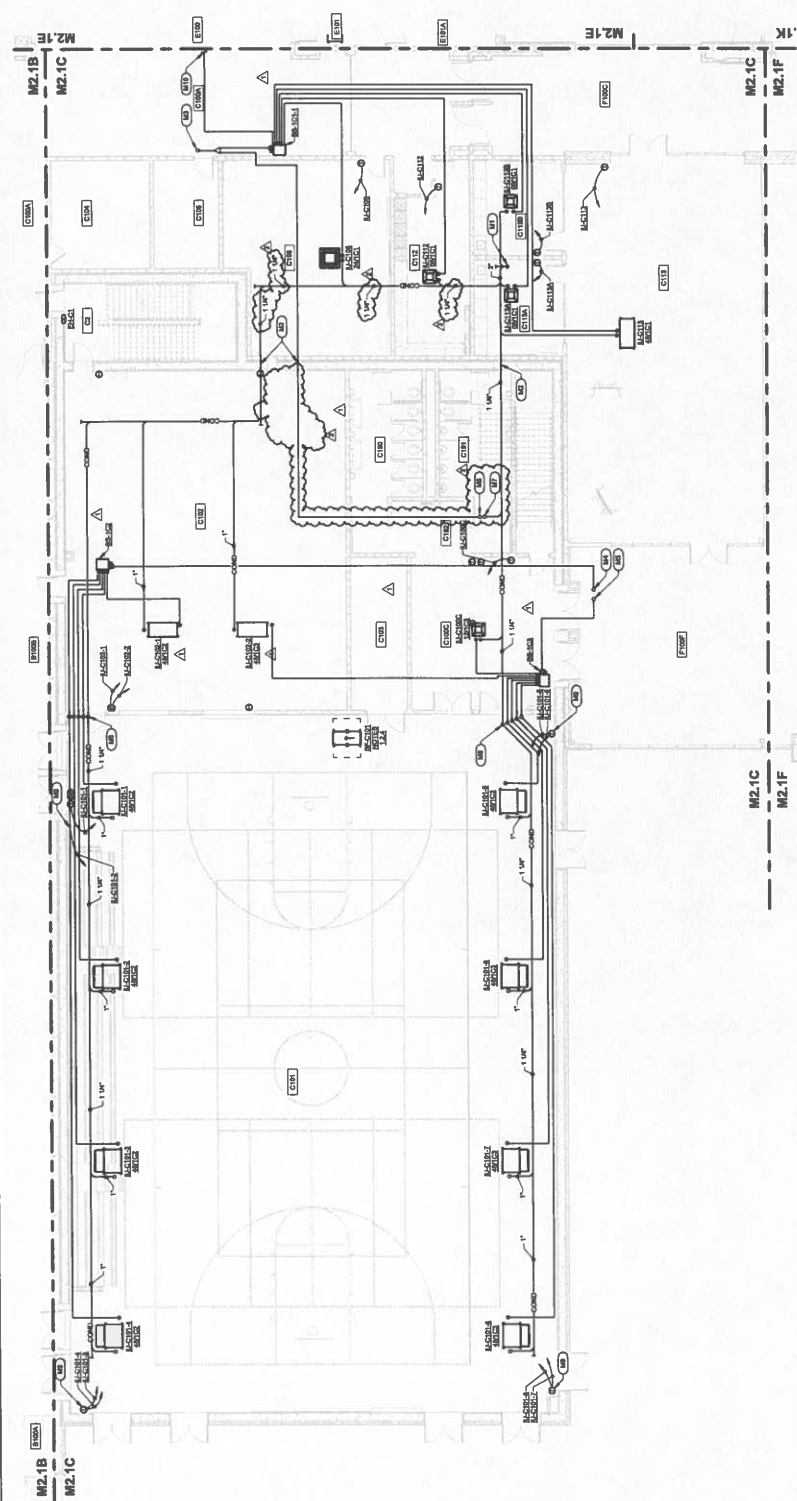
WBM
1000 S. 1st Street
Hopkinsville, KY 42240
Telephone: 270-846-2828

CSF Design and Equipment Co.
1402 S. Poplar Street
Hopkinsville, KY 42240
Telephone: 812-421-0627



Field	Value
Project No.	21108-204
Sheet No.	M2.1C
Author	J. Haver
Checked By	J. Haver
Designated By	J. Haver
Drawn By	J. Haver
Scale	AS SHOWN
Notes	

- PLAN NOTES:**
- (1) REFER TO PLAN FOR OPEN BRICK CHIMNEY IN CEILING. PROVIDE 1/2" TO 3/4" AIR GAP ABOVE.
 - (2) PIPES THROUGH STONE BRICKER WALL SHOULD BE PROTECTED BY AN AIR GAP ABOVE.
 - (3) REFER TO ARCHITECTURAL DRAWINGS FOR DETAIL OF BRICKER WALL.
 - (4) REFER TO ARCHITECTURAL DRAWINGS FOR DETAIL OF BRICKER WALL.
 - (5) REFER TO ARCHITECTURAL DRAWINGS FOR DETAIL OF BRICKER WALL.
 - (6) REFER TO ARCHITECTURAL DRAWINGS FOR DETAIL OF BRICKER WALL.
 - (7) REFER TO ARCHITECTURAL DRAWINGS FOR DETAIL OF BRICKER WALL.
 - (8) REFER TO ARCHITECTURAL DRAWINGS FOR DETAIL OF BRICKER WALL.
 - (9) REFER TO ARCHITECTURAL DRAWINGS FOR DETAIL OF BRICKER WALL.
 - (10) REFER TO ARCHITECTURAL DRAWINGS FOR DETAIL OF BRICKER WALL.
 - (11) REFER TO ARCHITECTURAL DRAWINGS FOR DETAIL OF BRICKER WALL.
 - (12) REFER TO ARCHITECTURAL DRAWINGS FOR DETAIL OF BRICKER WALL.
 - (13) REFER TO ARCHITECTURAL DRAWINGS FOR DETAIL OF BRICKER WALL.
 - (14) REFER TO ARCHITECTURAL DRAWINGS FOR DETAIL OF BRICKER WALL.
 - (15) REFER TO ARCHITECTURAL DRAWINGS FOR DETAIL OF BRICKER WALL.
 - (16) REFER TO ARCHITECTURAL DRAWINGS FOR DETAIL OF BRICKER WALL.
 - (17) REFER TO ARCHITECTURAL DRAWINGS FOR DETAIL OF BRICKER WALL.
 - (18) REFER TO ARCHITECTURAL DRAWINGS FOR DETAIL OF BRICKER WALL.
 - (19) REFER TO ARCHITECTURAL DRAWINGS FOR DETAIL OF BRICKER WALL.
 - (20) REFER TO ARCHITECTURAL DRAWINGS FOR DETAIL OF BRICKER WALL.



FIRST FLOOR HVAC PIPING PLAN - AREA C
1/8" = 1'-0"



NOE # : 190 25-104
5145 FT. CAMPBELL BLVD
HOPKINSVILLE, KY 42404

HAFER
1111 1/2 1st Street,
Hopkinsville, KY 42425
Phone: 270-241-1111
Fax: 270-241-1114
www.hafers.com

ALLIANCE
116 E. COLONY AVENUE
HOPKINSVILLE, KY 42401
Telephone: 270-241-4881

bell
197 Forest Oaks
Hopkinsville, KY 42404
Telephone: 270-241-6444

KS Engineering PLLC
1241 Highway 100
Hopkinsville, TN 38426
Telephone: 877-447-0262

WBW
1800 S. COLONY AVENUE
HOPKINSVILLE, KY 42404
Telephone: 270-241-0929

237 Bridge and Equipment Co.
1000 S. COLONY AVENUE, SUITE 100
HOPKINSVILLE, TN 38426
Telephone: 813-447-4477



KEY PLAN

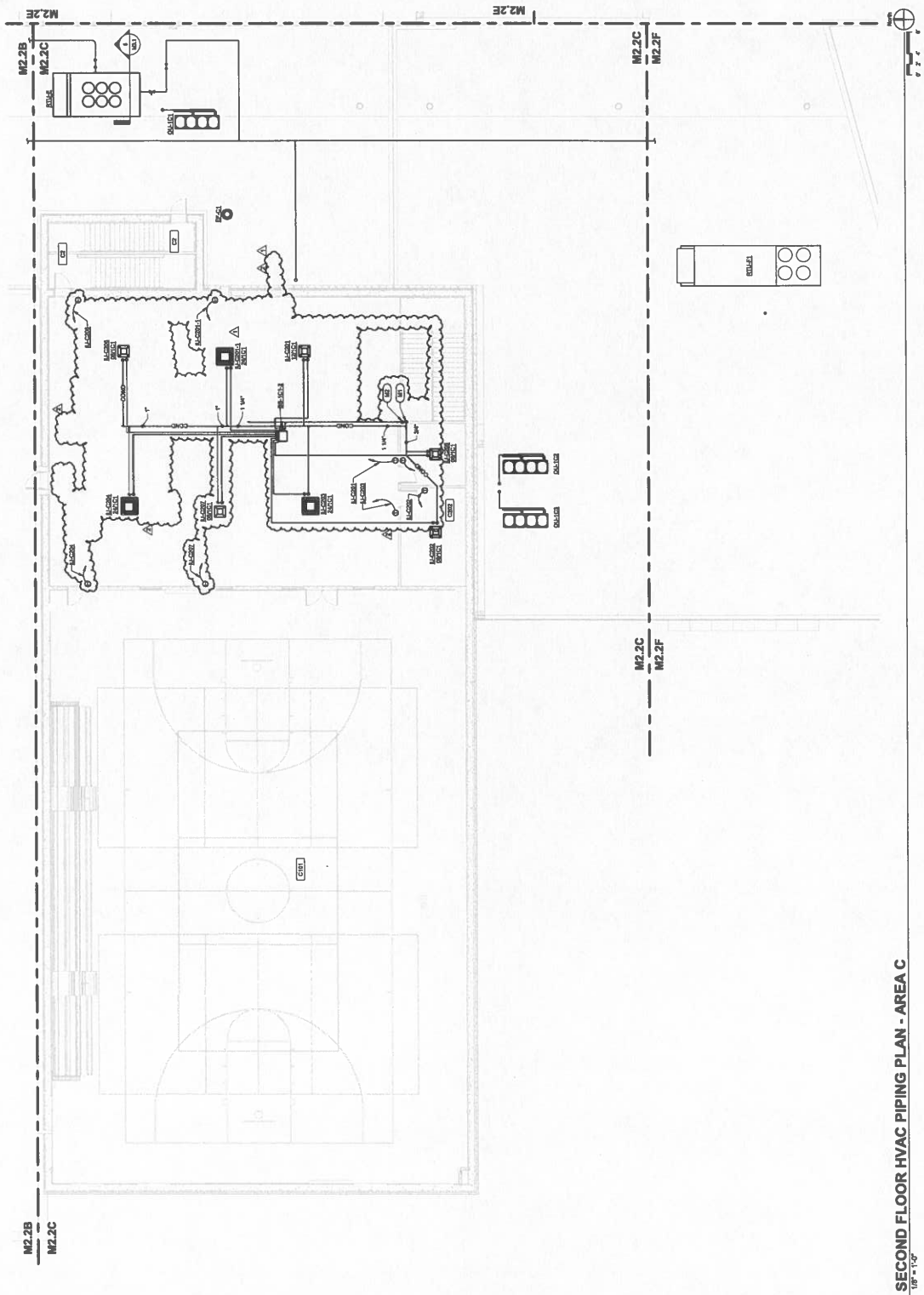


NO.	REVISION	DATE	BY	CHKD BY
1	ISSUE FOR PERMIT	05/20/20	DP	DP
2	ISSUE FOR CONSTRUCTION			
3				
4				
5				
6				
7				
8				
9				
10				
11				
12				
13				
14				
15				
16				
17				
18				
19				
20				

Project No: 2106-204
Date: May, 20
Sheet Title: SECOND FLOOR HVAC PIPING PLAN - AREA C

Architect's Project No: 2106-204
Date: May, 20
Drawing No: M2.2C

PLAN NOTES:
 (CD) 1/4" CONDENSATE DOWN
 (CB) RETURN AIR LIGHTS DOWN



SECOND FLOOR HVAC PIPING PLAN - AREA C
18" x 14"



NOE 8 - 80 26-104

618 FT CAMPBELL BLVD
HOPKINSVILLE, KY 42240

HAFER
ARCHITECTS • ENGINEERS • PLANNERS
1111 S. Third Street
Hopkinsville, KY 42240
Phone: 731-241-1177
Fax: 731-241-1178

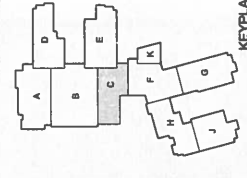
ALLIANCE
1111 S. Third Street
Hopkinsville, KY 42240
Phone: 731-241-1177

bell
1111 S. Third Street
Hopkinsville, KY 42240
Phone: 731-241-1177

KCS Engineering, PLLC
1111 S. Third Street
Hopkinsville, KY 42240
Phone: 731-241-1177

WBW
1111 S. Third Street
Hopkinsville, KY 42240
Phone: 731-241-1177

CS Design and Equipment Co.
1111 S. Third Street
Hopkinsville, KY 42240
Phone: 731-241-1177



KEPLA

NOTES (FIRST FLOOR SYS. & TECH. PLAN - AREA "C"):
C1. PROVIDE DATA OUTLET FOR NETWORK CONNECTION TO BUILDING...
C2. PROVIDE DATA OUTLET FOR NETWORK CONNECTION TO BUILDING...
C3. PROVIDE DATA OUTLET FOR NETWORK CONNECTION TO BUILDING...

NOTES (FIRST FLOOR SYS. & TECH. PLAN - AREA "C"):
C4. PROVIDE DATA OUTLET FOR NETWORK CONNECTION TO BUILDING...
C5. PROVIDE DATA OUTLET FOR NETWORK CONNECTION TO BUILDING...

NOTES (FIRST FLOOR SYS. & TECH. PLAN - AREA "C"):
C6. PROVIDE DATA OUTLET FOR NETWORK CONNECTION TO BUILDING...
C7. PROVIDE DATA OUTLET FOR NETWORK CONNECTION TO BUILDING...

NOTES (FIRST FLOOR SYS. & TECH. PLAN - AREA "C"):
C8. PROVIDE DATA OUTLET FOR NETWORK CONNECTION TO BUILDING...
C9. PROVIDE DATA OUTLET FOR NETWORK CONNECTION TO BUILDING...

NOTES (FIRST FLOOR SYS. & TECH. PLAN - AREA "C"):
C10. PROVIDE DATA OUTLET FOR NETWORK CONNECTION TO BUILDING...
C11. PROVIDE DATA OUTLET FOR NETWORK CONNECTION TO BUILDING...

NOTES (FIRST FLOOR SYS. & TECH. PLAN - AREA "C"):
C12. PROVIDE DATA OUTLET FOR NETWORK CONNECTION TO BUILDING...
C13. PROVIDE DATA OUTLET FOR NETWORK CONNECTION TO BUILDING...

NOTES (FIRST FLOOR SYS. & TECH. PLAN - AREA "C"):
C14. PROVIDE DATA OUTLET FOR NETWORK CONNECTION TO BUILDING...
C15. PROVIDE DATA OUTLET FOR NETWORK CONNECTION TO BUILDING...

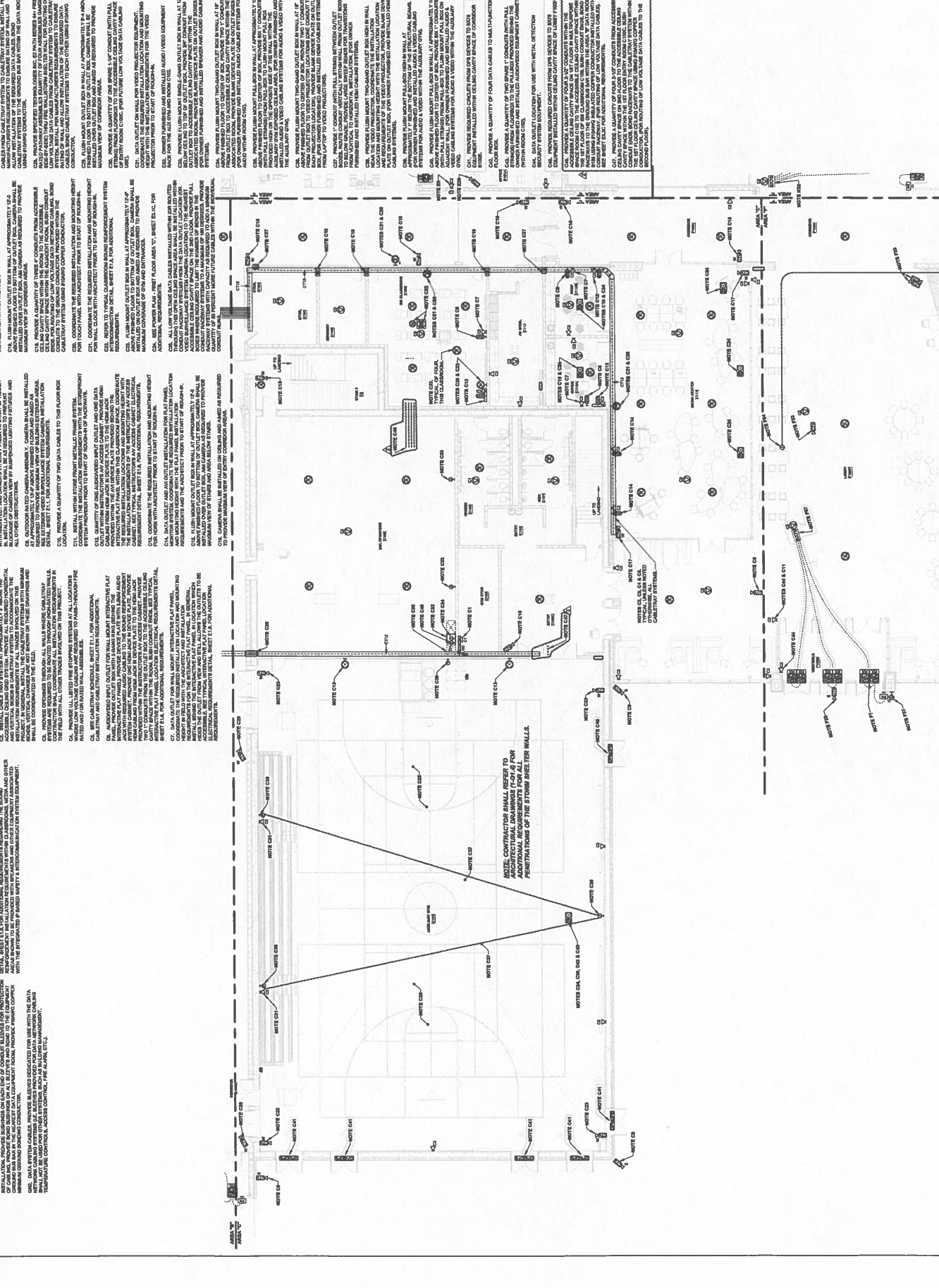


Table with columns: Description, Quantity, Unit, Price. Includes items like 'CONDUIT', 'CABLE', 'OUTLET', 'CABINET'.

Contractor: _____
Checked By: _____
Date: _____

Author's Project No: _____
Date: _____
2106-204
May, 20

Drawing No: _____

Author's Project No: _____
Date: _____
2106-204
May, 20

Drawing No: _____

Author's Project No: _____
Date: _____
2106-204
May, 20

Drawing No: _____



NOE # 130 25-104

618 FT. CAHONES, RLVG HOPKINSVILLE, KY 42404

HAFER

Logos for ALLIANCE, bell, K+S Engineering, PLCC, WBW, and other partners.

Table for Panel L110C listing electrical loads such as RECEPT, COOR, and VIDE.

Table for Panel L111C listing electrical loads such as RECEPT, REFRIG, and MOTOR.

Table for Panel L112C listing electrical loads such as RECEPT, REFRIG, and MOTOR.

Table for Panel L113C listing electrical loads such as RECEPT, REFRIG, and MOTOR.

Table for Panel L114C listing electrical loads such as RECEPT, REFRIG, and MOTOR.

Table for Panel L115C listing electrical loads such as RECEPT, REFRIG, and MOTOR.

Table for Panel L116C listing electrical loads such as RECEPT, REFRIG, and MOTOR.

Table for Panel L117C listing electrical loads such as RECEPT, REFRIG, and MOTOR.

Table for Panel L118C listing electrical loads such as RECEPT, REFRIG, and MOTOR.

Table for Panel L119C listing electrical loads such as RECEPT, REFRIG, and MOTOR.

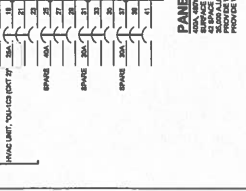
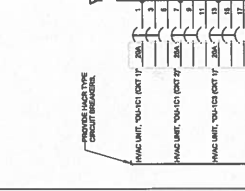
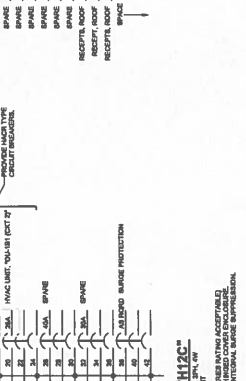
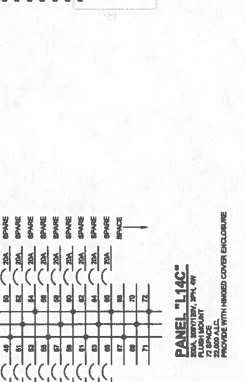
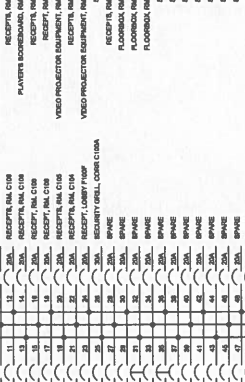
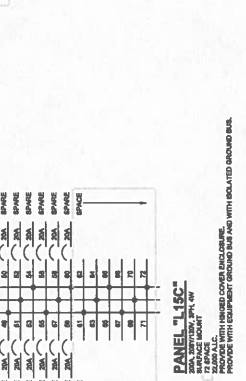
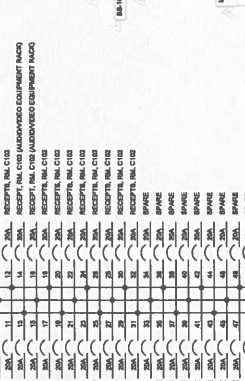
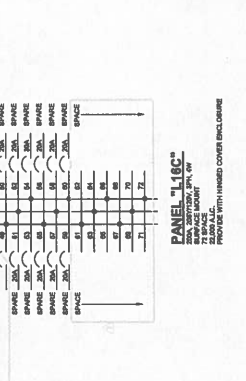
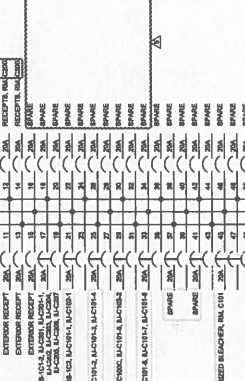
Table for Panel L120C listing electrical loads such as RECEPT, REFRIG, and MOTOR.

Table for Panel L121C listing electrical loads such as RECEPT, REFRIG, and MOTOR.

Table for Panel L122C listing electrical loads such as RECEPT, REFRIG, and MOTOR.

Table for Panel L123C listing electrical loads such as RECEPT, REFRIG, and MOTOR.

Table for Panel L124C listing electrical loads such as RECEPT, REFRIG, and MOTOR.



Logos for various electrical equipment suppliers.

Logos for various electrical equipment suppliers.

Logos for various electrical equipment suppliers.

Logos for various electrical equipment suppliers.

Logos for various electrical equipment suppliers.

Logos for various electrical equipment suppliers.



102 Max Hurt Dr.
 Murray, KY. 42071
 (270) 753-5370
 (270) 753-7504 Fax
 www.drywallsystemsplus.com

Change Order Request

01-23-0077 — Hopkinsville Christian Co. Academy

COR Subject: Second Floor C Redesign

To Jacob Taylor
 Drywall Systems Plus, Inc.

COR Number: 01-23-0077-2
 COR Revision Number: 0

COR Date: 7/25/2024
 Work Type: Price / Proceed
 Days Valid: 5

Return To Jacob Taylor
 Drywall Systems Plus, Inc.
 270-753-5370
 jacob.t@dwsplinc.com

Details

Description	Cost / Rate	Qty / Hrs	Workers	Ext
Framing Labor	\$28.80	-122.00 <i>Hrs</i>	1.00	\$-3,513.60
Drywall Labor	\$28.80	-359.00 <i>Hrs</i>	1.00	\$-10,339.20
Insulation Labor	\$28.80	-17.00 <i>Hrs</i>	1.00	\$-489.60
Drywall Material	(\$3,629.00)	1.00 <i>EACH</i>	-	\$-3,629.00
Insulation Material	(\$784.42)	1.00 <i>EACH</i>	-	\$-784.42

Breakout

Labor : (\$14,342.40)
 Bond Percent @ 1.5%: (\$215.14)
 Material : (\$4,413.42)
 Ins&Tax @ 6%: (\$264.81)
 Bond Percent @ 1.5%: (\$66.20)
Total: (\$19,301.97)

Reservation of Rights

This COR does not include any amount for impacts such as interference, disruptions, rescheduling, changes in the sequence of work, delays and/or associated acceleration. We expressly reserve the right to submit our request for any of these items.

Signed By: _____

Dated: 7/25/2024

FACPAC Contract Change Order Supplemental Information Form (Ref# 60986)

Form Status: Saved

Tier 1 Project: Consolidated High School

BG Number: 22-104

Status: Active

District: Christian County (HB678) (115)

Phase: Project Initiation (View Checklist)

Contract: Drywall Systems, Inc. , 0092, Gyp Board Assemblies

Type: CM Bid Package

Proposed

Change Order Number	2
Time Extension Required	No
Date Of Change Order	10/14/2024
Change Order Amount To Date	Decrease

Construction Contingency

Calculations below are project wide. Remaining negative Construction Contingency may require the submission of a revised BG1.

Current Approved Amount	\$6,320,436.60
Net Approved COs	\$365,699.78
Remaining After Approved COs	\$5,954,736.82
Net All COs	\$341,185.05
Remaining After All COs	\$5,979,251.55

This Requested Change Order Amount (\$19,301.97)

+/-

Change In A/E Fee This Change Order

+/-

Change In CM Fee This Change Order \$0.00

+/-

Remaining Construction Contingency \$5,979,251.55

Balance

Contract Change Requested By Local Board of Education

Contract Change Reason Code Reduction of Scope

Change Order Description And Justification

Deduct gypsum board framing, gypsum board installation, and finishing per PR #20, area C 2nd floor redesign.

Cost Benefit To Owner

This will result in a cost savings to the owner.

Contract unit prices have been utilized No
to support the cost associated with this

change order.

Detailed Cost Breakdown

Contract unit prices have not been utilized, provide a detailed cost breakdown which separates labor, material, profit and overhead.

Detail Item	Amount	Percent of Total
Labor	(\$14,342.40)	74.31%
Materials	(\$4,413.42)	22.87%
Profit and Overhead	(\$264.81)	1.37%
Bond Insurance	(\$281.34)	1.46%
Cost Breakdown Total:	\$-19,301.97	

Cost for this Change Order supported by an alternate bid or competitive price quote

Explain Why

Executed contract with contractor.

Change Order Supplemental Information Form Signature Page (Online Form Ref# 60986)

Architect

Date

Construction Manager

Date

Finance Officer

Date

Local Board of Education Designee

Date