



AIA® Document G731™ – 2019

Change Order, Construction Manager as Adviser Edition

PROJECT: (name and address)

Christian County High School

5185 Fort Campbell Blvd Hopkinsville,
KY 42240**OWNER: (name and address)**Christian County Board of Education
200 Glass Avenue
Hopkinsville, KY 42240**CONTRACTOR: (name and address)**

Atlas Enterprises

CONTRACT INFORMATION:Contract For: BP 080-03 - Steel
Drs, Frames, Wood Drs, Hdwe
Date: September 08, 2023**ARCHITECT: (name and address)**Hafer PSC
21 Southeast Third St, Ste 800
Evansville, IN 47708**CHANGE ORDER INFORMATION:**

Change Order Number: 041

Date: October 14, 2024

CONSTRUCTION MANAGER: (name and address)Alliance Corporation
116 E. College Street
Glasgow, KY 42141**THE CONTRACT IS CHANGED AS FOLLOWS:***(Insert a detailed description of the change and, if applicable, attach or reference specific exhibits. Also include agreed upon adjustments attributable to executed Construction Change Directives.)*

Deduct doors and hardware per PR #20, area C 2nd floor redesign.

The original Contract Sum was	\$	362,000.00
Net change by previously authorized Change Orders	\$	5,621.53
The Contract Sum prior to this Change Order was	\$	367,621.53
The Contract Sum will be decreased by this Change Order in the amount of	\$	4,938.00
The new Contract Sum including this Change Order will be	\$	362,683.53

The Contract Time will be unchanged by Zero (0) days.

The Contractor's Work shall be substantially complete on

NOTE: This Change Order does not include adjustments to the Contract Sum or Guaranteed Maximum Price, or the Contract Time, that have been authorized by Construction Change Directive until the cost and time have been agreed upon by both the Owner and Contractor, in which case a Change Order is executed to supersede the Construction Change Directive.**NOT VALID UNTIL SIGNED BY THE ARCHITECT, CONSTRUCTION MANAGER, CONTRACTOR, AND OWNER.**

Hafer PSC

ARCHITECT (Firm name)

SIGNATURE

Eric Rang, AIA, Senior Associate

PRINTED NAME AND TITLE

DATE:

Atlas Enterprises

CONTRACTOR (Firm name)

SIGNATURE

Michael Tunnell

PRINTED NAME AND TITLE

DATE:

Alliance Corporation

CONSTRUCTION MANAGER (Firm name)

SIGNATURE

Kevin Hitchel, Sr. Project Manager

PRINTED NAME AND TITLE

DATE:

Christian County Board of Education

OWNER (Firm name)

SIGNATURE

Christopher Bentzel, Superintendent

PRINTED NAME AND TITLE

DATE:



PROPOSED CHANGE ORDER

PROJECT Christian County High School

CONTRACTOR/SUPPLIER Atlas

BID PACKAGE 080

DETAIL ITEM	AMOUNT
LABOR	\$ (1,050.00)
MATERIALS	\$ (3,888.00)
PROFIT & OVERHEAD	
BOND INSURANCE	
COST BREAKDOWN TOTAL	\$ (4,938.00)

DESCRIPTION

Deduct Doors and Hardware per PR #20, Area C 2nd Floor Redesign.

PR # 20 (ATTACH PR)

CHANGE ORDER INITIATED BY:

- ARCHITECT/ENGINEER
- OWNER
- CONTRACTOR
- CM
- CODE OFFICIAL
- OTHER _____

PLEASE INCLUDE THIS FORM WITH EVERY CHANGE ORDER.



architects • designers • engineers

21 SE Third Street, Suite 800 • Evansville, IN 47708
P: 812.422.4187 • F: 812.421.6776
101 E Second Street, Suite 101 • Owensboro, KY 42301
P: 270.926.1331 • F: 270.684.4456
haferdesign.com

PROPOSAL REQUEST

Project:	Christian County High School 5185 Ft. Campbell Blvd Hopkinsville, KY 42240	PR No.:	019
		Date:	June 28, 2024
Owner:	Christian County Public Schools 222 Glass Ave Hopkinsville, KY 42240	Project Number:	2106-204
		Contract for:	
To:	Kevin Hitchell Alliance Corporation 116 E. College Steet Glasgow, KY 42141		
RE:	Area C Second Floor		

Please submit an itemized quotation for changes in the Contract Sum and/or Time incidental to proposed modifications to the Contract Documents described herein.
THIS IS NOT A CHANGE ORDER NOR A DIRECTION TO PROCEED WITH THE WORK DESCRIBED HEREIN.

Description:

Delete ROTC Suite buildout as originally shown in the bid documents. Provide a large wrestling room, office and storage room as shown in the attached revised sheets.

Attachments: Revised Drawings A1.2, A1.2C, A2.2C, A7.2, A9.3, A11.6, A11.9, ID4.1, ID4.2, M1.2C, M2.1C, M2.2C, E1.12, E2.2C, E3.1, E3.1C, E3.2C, E4.2C, E6.3

By: Eric Rang

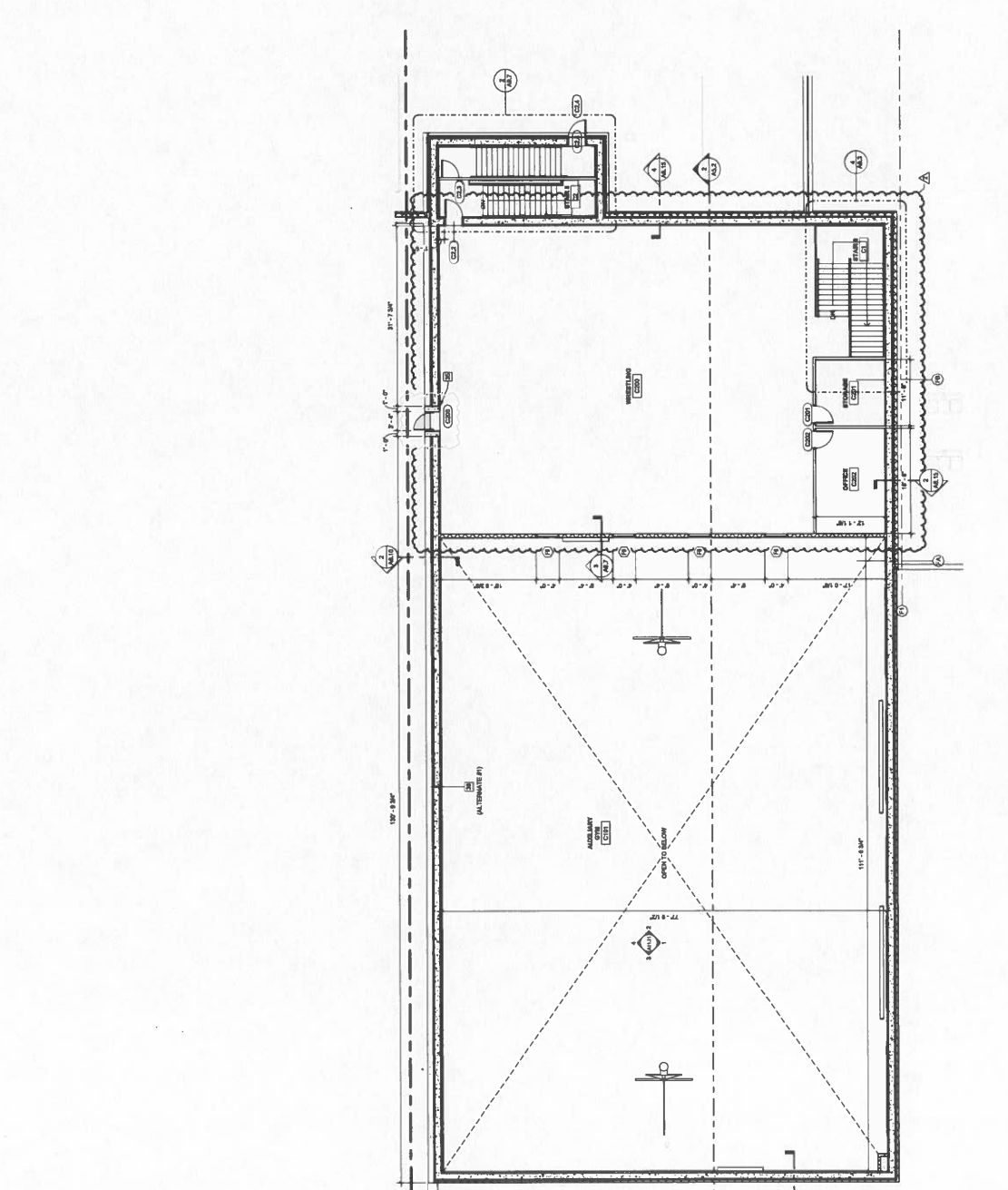
CC:



GENERAL FLOOR PLAN NOTES:
A. REFER TO OVERALL FLOOR PLANS FOR GENERAL NOTES.

FLOOR PLAN REFERENCE NOTES:

1. BRACKET MOUNTED FIRE EXTINGUISHER.
2. REINFORCED FIRE EXTINGUISHER CABINET.
3. FIRE EXTINGUISHER MOUNTING BRACKET AND CABINET.
4. FIRE EXTINGUISHER MOUNTING BRACKET AND CABINET.
5. FIRE EXTINGUISHER MOUNTING BRACKET AND CABINET.
6. FIRE EXTINGUISHER MOUNTING BRACKET AND CABINET.
7. FIRE EXTINGUISHER MOUNTING BRACKET AND CABINET.
8. FIRE EXTINGUISHER MOUNTING BRACKET AND CABINET.
9. FIRE EXTINGUISHER MOUNTING BRACKET AND CABINET.
10. FIRE EXTINGUISHER MOUNTING BRACKET AND CABINET.
11. FIRE EXTINGUISHER MOUNTING BRACKET AND CABINET.
12. FIRE EXTINGUISHER MOUNTING BRACKET AND CABINET.
13. FIRE EXTINGUISHER MOUNTING BRACKET AND CABINET.
14. FIRE EXTINGUISHER MOUNTING BRACKET AND CABINET.
15. FIRE EXTINGUISHER MOUNTING BRACKET AND CABINET.
16. FIRE EXTINGUISHER MOUNTING BRACKET AND CABINET.
17. FIRE EXTINGUISHER MOUNTING BRACKET AND CABINET.
18. FIRE EXTINGUISHER MOUNTING BRACKET AND CABINET.
19. FIRE EXTINGUISHER MOUNTING BRACKET AND CABINET.
20. FIRE EXTINGUISHER MOUNTING BRACKET AND CABINET.
21. FIRE EXTINGUISHER MOUNTING BRACKET AND CABINET.
22. FIRE EXTINGUISHER MOUNTING BRACKET AND CABINET.
23. FIRE EXTINGUISHER MOUNTING BRACKET AND CABINET.
24. FIRE EXTINGUISHER MOUNTING BRACKET AND CABINET.
25. FIRE EXTINGUISHER MOUNTING BRACKET AND CABINET.
26. FIRE EXTINGUISHER MOUNTING BRACKET AND CABINET.
27. FIRE EXTINGUISHER MOUNTING BRACKET AND CABINET.
28. FIRE EXTINGUISHER MOUNTING BRACKET AND CABINET.
29. FIRE EXTINGUISHER MOUNTING BRACKET AND CABINET.
30. FIRE EXTINGUISHER MOUNTING BRACKET AND CABINET.
31. FIRE EXTINGUISHER MOUNTING BRACKET AND CABINET.
32. FIRE EXTINGUISHER MOUNTING BRACKET AND CABINET.
33. FIRE EXTINGUISHER MOUNTING BRACKET AND CABINET.
34. FIRE EXTINGUISHER MOUNTING BRACKET AND CABINET.
35. FIRE EXTINGUISHER MOUNTING BRACKET AND CABINET.
36. FIRE EXTINGUISHER MOUNTING BRACKET AND CABINET.
37. FIRE EXTINGUISHER MOUNTING BRACKET AND CABINET.
38. FIRE EXTINGUISHER MOUNTING BRACKET AND CABINET.
39. FIRE EXTINGUISHER MOUNTING BRACKET AND CABINET.
40. FIRE EXTINGUISHER MOUNTING BRACKET AND CABINET.
41. FIRE EXTINGUISHER MOUNTING BRACKET AND CABINET.
42. FIRE EXTINGUISHER MOUNTING BRACKET AND CABINET.
43. FIRE EXTINGUISHER MOUNTING BRACKET AND CABINET.
44. FIRE EXTINGUISHER MOUNTING BRACKET AND CABINET.
45. FIRE EXTINGUISHER MOUNTING BRACKET AND CABINET.
46. FIRE EXTINGUISHER MOUNTING BRACKET AND CABINET.
47. FIRE EXTINGUISHER MOUNTING BRACKET AND CABINET.
48. FIRE EXTINGUISHER MOUNTING BRACKET AND CABINET.
49. FIRE EXTINGUISHER MOUNTING BRACKET AND CABINET.
50. FIRE EXTINGUISHER MOUNTING BRACKET AND CABINET.
51. FIRE EXTINGUISHER MOUNTING BRACKET AND CABINET.
52. FIRE EXTINGUISHER MOUNTING BRACKET AND CABINET.
53. FIRE EXTINGUISHER MOUNTING BRACKET AND CABINET.
54. FIRE EXTINGUISHER MOUNTING BRACKET AND CABINET.
55. FIRE EXTINGUISHER MOUNTING BRACKET AND CABINET.
56. FIRE EXTINGUISHER MOUNTING BRACKET AND CABINET.
57. FIRE EXTINGUISHER MOUNTING BRACKET AND CABINET.
58. FIRE EXTINGUISHER MOUNTING BRACKET AND CABINET.
59. FIRE EXTINGUISHER MOUNTING BRACKET AND CABINET.
60. FIRE EXTINGUISHER MOUNTING BRACKET AND CABINET.
61. FIRE EXTINGUISHER MOUNTING BRACKET AND CABINET.
62. FIRE EXTINGUISHER MOUNTING BRACKET AND CABINET.
63. FIRE EXTINGUISHER MOUNTING BRACKET AND CABINET.
64. FIRE EXTINGUISHER MOUNTING BRACKET AND CABINET.
65. FIRE EXTINGUISHER MOUNTING BRACKET AND CABINET.
66. FIRE EXTINGUISHER MOUNTING BRACKET AND CABINET.
67. FIRE EXTINGUISHER MOUNTING BRACKET AND CABINET.
68. FIRE EXTINGUISHER MOUNTING BRACKET AND CABINET.
69. FIRE EXTINGUISHER MOUNTING BRACKET AND CABINET.
70. FIRE EXTINGUISHER MOUNTING BRACKET AND CABINET.
71. FIRE EXTINGUISHER MOUNTING BRACKET AND CABINET.
72. FIRE EXTINGUISHER MOUNTING BRACKET AND CABINET.
73. FIRE EXTINGUISHER MOUNTING BRACKET AND CABINET.
74. FIRE EXTINGUISHER MOUNTING BRACKET AND CABINET.
75. FIRE EXTINGUISHER MOUNTING BRACKET AND CABINET.
76. FIRE EXTINGUISHER MOUNTING BRACKET AND CABINET.
77. FIRE EXTINGUISHER MOUNTING BRACKET AND CABINET.
78. FIRE EXTINGUISHER MOUNTING BRACKET AND CABINET.
79. FIRE EXTINGUISHER MOUNTING BRACKET AND CABINET.
80. FIRE EXTINGUISHER MOUNTING BRACKET AND CABINET.
81. FIRE EXTINGUISHER MOUNTING BRACKET AND CABINET.
82. FIRE EXTINGUISHER MOUNTING BRACKET AND CABINET.
83. FIRE EXTINGUISHER MOUNTING BRACKET AND CABINET.
84. FIRE EXTINGUISHER MOUNTING BRACKET AND CABINET.
85. FIRE EXTINGUISHER MOUNTING BRACKET AND CABINET.
86. FIRE EXTINGUISHER MOUNTING BRACKET AND CABINET.
87. FIRE EXTINGUISHER MOUNTING BRACKET AND CABINET.
88. FIRE EXTINGUISHER MOUNTING BRACKET AND CABINET.
89. FIRE EXTINGUISHER MOUNTING BRACKET AND CABINET.
90. FIRE EXTINGUISHER MOUNTING BRACKET AND CABINET.
91. FIRE EXTINGUISHER MOUNTING BRACKET AND CABINET.
92. FIRE EXTINGUISHER MOUNTING BRACKET AND CABINET.
93. FIRE EXTINGUISHER MOUNTING BRACKET AND CABINET.
94. FIRE EXTINGUISHER MOUNTING BRACKET AND CABINET.
95. FIRE EXTINGUISHER MOUNTING BRACKET AND CABINET.
96. FIRE EXTINGUISHER MOUNTING BRACKET AND CABINET.
97. FIRE EXTINGUISHER MOUNTING BRACKET AND CABINET.
98. FIRE EXTINGUISHER MOUNTING BRACKET AND CABINET.
99. FIRE EXTINGUISHER MOUNTING BRACKET AND CABINET.
100. FIRE EXTINGUISHER MOUNTING BRACKET AND CABINET.



ALLIANCE
U.S. & Canada
1150 E. 10th Street
Hopkinsville, KY 42240
Telephone: 278-691-6040

bell
197 Union Drive
Hopkinsville, KY 42240
Telephone: 278-698-8848

K+S Engineering, PLLC
Civil/Structural/Interior
1150 E. 10th Street
Hopkinsville, KY 42240
Telephone: 855-642-8262

WBW
1150 E. 10th Street
Hopkinsville, KY 42240
Telephone: 278-698-5230

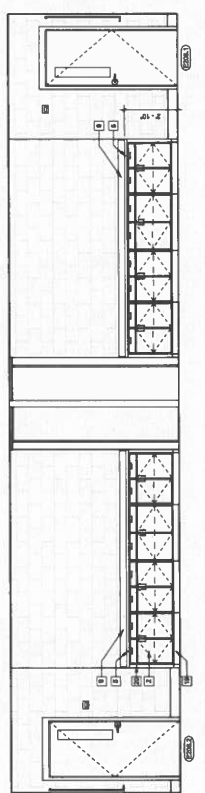
GT
GAT Design and Remodeling Co.
1150 E. 10th Street
Hopkinsville, KY 42240
Telephone: 813-431-4527

GENERAL NOTES:

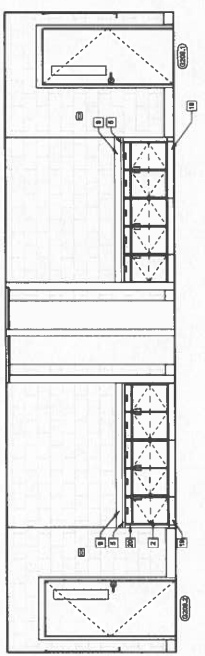
- A. GENERAL CONTRACTOR TO COORDINATE WITH OTHER TRADES FOR ALL CABINETRY, COUNTERTOP, WALL PANELING AND COMPONENTS PRIOR TO INSTALLATION.
- B. ALL CABINETRY AND COUNTERTOP SHALL BE INSTALLED TO MATCH ADJACENT ROOMS.
- C. COORDINATE ALL RECEPTACLES, SWITCHES, ETC. DEVICES AND COMPONENTS PRIOR TO INSTALLATION.
- D. ALL EXPANDED BRACES TO BE LAMINATED UNDER MFG. METERED CONDITIONS.
- E. COUNTERTOP SHALL BE LAMINATED TO MATCH ADJACENT ROOMS.
- F. PROVIDE BACKPLASH AT ALL LOCATIONS WHERE COUNTERTOP MEETS WALL.
- G. PROVIDE FILLER PANELS AS REQUIRED TO ACHIEVE A COMPLETE SET OF CABINETS TO ADJACENT WALLS AND CEILING.
- H. PROVIDE WOOD BLOCKING AS REQUIRED.
- I. REFER TO ALL CONTRACTS AND REQUIREMENTS PRIOR TO INSTALLATION.
- J. REFER TO ALL CONTRACTS AND REQUIREMENTS PRIOR TO INSTALLATION.
- K. TYPICAL CABINETS AS SHOWN IN DRAWING TO BE USED AT ALL LOCATIONS UNLESS OTHERWISE NOTED.
- L. PROVIDE LATCHES AT FINGER & HAND ROOM CABINETS.

REFERENCE NOTES:

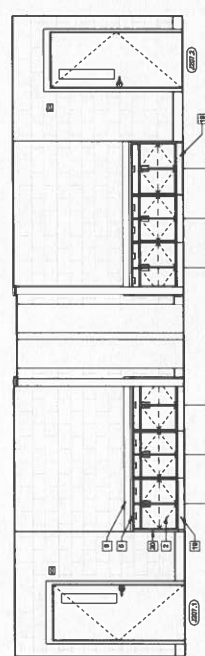
1. PLATE LAMINATE GLASS UPPER CABINET
2. PLATE LAMINATE GLASS TALL CABINET
3. PLATE LAMINATE GLASS WALL GLAZED SWITCH ADJACENT CABINETRY
4. PLATE LAMINATE GLASS COUNTERTOP WITH 1/2" HDG. BRASSING
5. STAINLESS STEEL COUNTERTOP
6. EPOXY COUNTERTOP
7. BACKPLASH - MATCH COUNTERTOP FINISH (IF APPLICABLE)
8. WOOD BASE CABINET
9. WOOD TALL CABINET
10. PAINTED METAL UPPER CABINET
11. PAINTED METAL TALL CABINET
12. FINISHED GLOSS LAMINATE BACKLASH @ 1/4" O.C. MAX.
13. FINISHED GLOSS LAMINATE LAUNCHER CABINETS
14. 1/2" HDG. BRASSING DRAWING FOR ADDITIONAL INFORMATION
15. WALL LANE - SEE FISH SCHEDULE
16. FLUSH PANEL SWITCH ADJACENT CABINETS
17. ADDITIONAL WALL PANEL FOR FINISH
18. ADDITIONAL WALL PANEL FOR FINISH
19. ADDITIONAL WALL PANEL FOR FINISH
20. ADDITIONAL WALL PANEL FOR FINISH
21. ADDITIONAL WALL PANEL FOR FINISH
22. ADDITIONAL WALL PANEL FOR FINISH
23. ADDITIONAL WALL PANEL FOR FINISH
24. ADDITIONAL WALL PANEL FOR FINISH
25. ADDITIONAL WALL PANEL FOR FINISH
26. ADDITIONAL WALL PANEL FOR FINISH
27. ADDITIONAL WALL PANEL FOR FINISH
28. ADDITIONAL WALL PANEL FOR FINISH
29. ADDITIONAL WALL PANEL FOR FINISH
30. ADDITIONAL WALL PANEL FOR FINISH
31. ADDITIONAL WALL PANEL FOR FINISH
32. ADDITIONAL WALL PANEL FOR FINISH
33. ADDITIONAL WALL PANEL FOR FINISH
34. ADDITIONAL WALL PANEL FOR FINISH
35. ADDITIONAL WALL PANEL FOR FINISH
36. ADDITIONAL WALL PANEL FOR FINISH
37. ADDITIONAL WALL PANEL FOR FINISH
38. ADDITIONAL WALL PANEL FOR FINISH
39. ADDITIONAL WALL PANEL FOR FINISH
40. ADDITIONAL WALL PANEL FOR FINISH
41. ADDITIONAL WALL PANEL FOR FINISH
42. ADDITIONAL WALL PANEL FOR FINISH
43. ADDITIONAL WALL PANEL FOR FINISH
44. ADDITIONAL WALL PANEL FOR FINISH
45. ADDITIONAL WALL PANEL FOR FINISH
46. ADDITIONAL WALL PANEL FOR FINISH
47. ADDITIONAL WALL PANEL FOR FINISH
48. ADDITIONAL WALL PANEL FOR FINISH
49. ADDITIONAL WALL PANEL FOR FINISH
50. ADDITIONAL WALL PANEL FOR FINISH
51. ADDITIONAL WALL PANEL FOR FINISH
52. ADDITIONAL WALL PANEL FOR FINISH
53. ADDITIONAL WALL PANEL FOR FINISH
54. ADDITIONAL WALL PANEL FOR FINISH
55. ADDITIONAL WALL PANEL FOR FINISH
56. ADDITIONAL WALL PANEL FOR FINISH
57. ADDITIONAL WALL PANEL FOR FINISH
58. ADDITIONAL WALL PANEL FOR FINISH
59. ADDITIONAL WALL PANEL FOR FINISH
60. ADDITIONAL WALL PANEL FOR FINISH
61. ADDITIONAL WALL PANEL FOR FINISH
62. ADDITIONAL WALL PANEL FOR FINISH
63. ADDITIONAL WALL PANEL FOR FINISH
64. ADDITIONAL WALL PANEL FOR FINISH
65. ADDITIONAL WALL PANEL FOR FINISH
66. ADDITIONAL WALL PANEL FOR FINISH
67. ADDITIONAL WALL PANEL FOR FINISH
68. ADDITIONAL WALL PANEL FOR FINISH
69. ADDITIONAL WALL PANEL FOR FINISH
70. ADDITIONAL WALL PANEL FOR FINISH
71. ADDITIONAL WALL PANEL FOR FINISH
72. ADDITIONAL WALL PANEL FOR FINISH
73. ADDITIONAL WALL PANEL FOR FINISH
74. ADDITIONAL WALL PANEL FOR FINISH
75. ADDITIONAL WALL PANEL FOR FINISH
76. ADDITIONAL WALL PANEL FOR FINISH
77. ADDITIONAL WALL PANEL FOR FINISH
78. ADDITIONAL WALL PANEL FOR FINISH
79. ADDITIONAL WALL PANEL FOR FINISH
80. ADDITIONAL WALL PANEL FOR FINISH
81. ADDITIONAL WALL PANEL FOR FINISH
82. ADDITIONAL WALL PANEL FOR FINISH
83. ADDITIONAL WALL PANEL FOR FINISH
84. ADDITIONAL WALL PANEL FOR FINISH
85. ADDITIONAL WALL PANEL FOR FINISH
86. ADDITIONAL WALL PANEL FOR FINISH
87. ADDITIONAL WALL PANEL FOR FINISH
88. ADDITIONAL WALL PANEL FOR FINISH
89. ADDITIONAL WALL PANEL FOR FINISH
90. ADDITIONAL WALL PANEL FOR FINISH
91. ADDITIONAL WALL PANEL FOR FINISH
92. ADDITIONAL WALL PANEL FOR FINISH
93. ADDITIONAL WALL PANEL FOR FINISH
94. ADDITIONAL WALL PANEL FOR FINISH
95. ADDITIONAL WALL PANEL FOR FINISH
96. ADDITIONAL WALL PANEL FOR FINISH
97. ADDITIONAL WALL PANEL FOR FINISH
98. ADDITIONAL WALL PANEL FOR FINISH
99. ADDITIONAL WALL PANEL FOR FINISH
100. ADDITIONAL WALL PANEL FOR FINISH



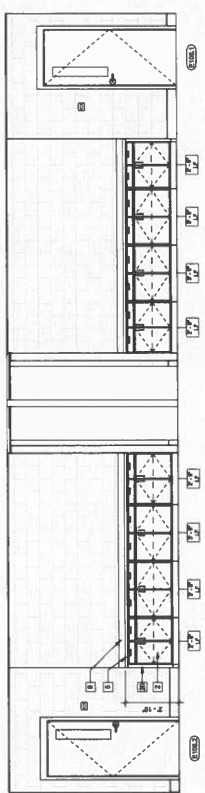
1 ELEVATION - CLASSROOM E206
1/8" = 1'-0"



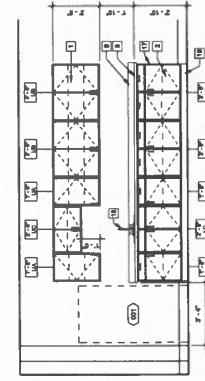
2 ELEVATION - CLASSROOM G209
1/8" = 1'-0"



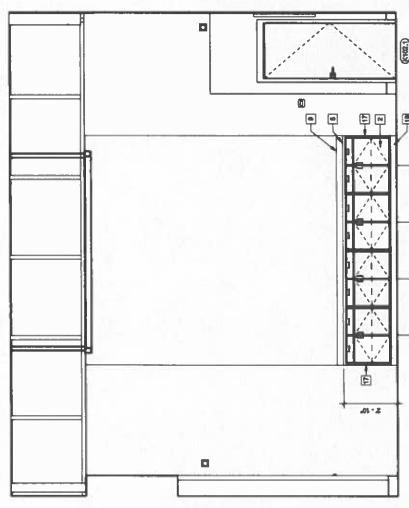
3 ELEVATION - CLASSROOM J207
1/8" = 1'-0"



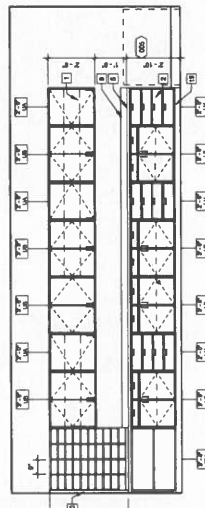
4 ELEVATION - CLASSROOM E106
1/8" = 1'-0"



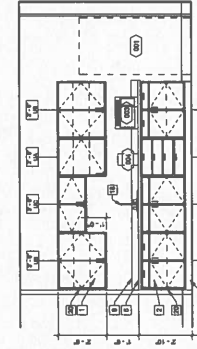
5 ELEVATION - NURSE K114
1/8" = 1'-0"



6 ELEVATION - RECEPTION K101
1/8" = 1'-0"



7 ELEVATION - WORK ROOM K117
1/8" = 1'-0"

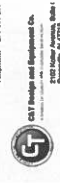
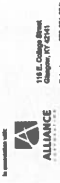


8 ELEVATION - WORK ROOM K117
1/8" = 1'-0"

INTERIOR ELEVATIONS

Author's Project No: 2105-204
Date: 5.30.

Drawing No: A11.6

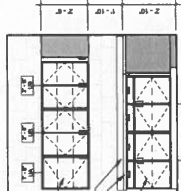


GENERAL NOTES:

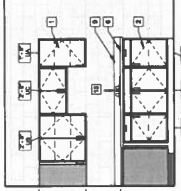
- A. GENERAL CONTRACTOR TO COORDINATE WITH OTHERS FOR ALL EQUIPMENT, MATERIALS, AND CONNECTIONS PRIOR TO INSTALLATION.
- B. PROVIDE ALL NECESSARY MATERIALS AND CONNECTIONS PRIOR TO INSTALLATION.
- C. COORDINATE ALL RECEPTACLES, SWITCHES, MISC. DEVICES AND CONSULT WITH ELECTRICAL CONTRACTOR FOR SPECIFIC REQUIREMENTS PRIOR TO INSTALLATION.
- D. ALL EXPOSED SURFACES TO BE LAMINATED UNLESS NOTED OTHERWISE. ALL COUNTERTOPS AND FINISHES TO BE INSTALLED WITH CONTIGUOUS SEALANT AT JOINTS AND WALLS.
- E. PROVIDE BARRIER AT ALL LOCATIONS WHERE COUNTERTOP MEETS WALL.
- F. PROVIDE BARRIER AT ALL LOCATIONS WHERE COUNTERTOP MEETS WALL.
- G. PROVIDE WOOD BLOODING AS REQUIRED.
- H. REFER TO DRAWINGS FOR FINISH MATERIALS.
- I. FINISH COUNTERTOP TO BE INSTALLED AS SHOWN AT BIDDING FOR ALL FINISHES.
- J. FINISH COUNTERTOP TO BE INSTALLED AS SHOWN AT BIDDING FOR ALL FINISHES.
- K. PROVIDE LOCKS AT FURNISH & ASB FROM CABINET.
- L. PROVIDE LOCKS AT FURNISH & ASB FROM CABINET.

REFERENCE NOTES:

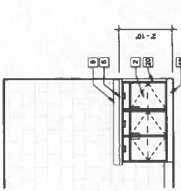
1. PARTIC LAMINATE GLAZ UPPER CABINET
2. PARTIC LAMINATE GLAZ LOWER CABINET
3. PARTIC LAMINATE GLAZ TALL CABINET
4. PARTIC LAMINATE GLAZ WALL COAT SWITCH MOUNTING
5. PARTIC LAMINATE GLAZ COUNTERTOP, WITH 3MM ROSEWOOD
6. PARTIC LAMINATE GLAZ COUNTERTOP, WITH 3MM ROSEWOOD
7. STAINLESS STEEL COUNTERTOP
8. EPoxy COUNTERTOP
9. BACKSLASH - MATCH COUNTERTOP FINISH (IF ANY)
10. WOOD UPPER CABINET
11. WOOD BASE CABINET
12. WOOD TALL CABINET
13. PAINTED METAL UPPER CABINET
14. PAINTED METAL TALL CABINET
15. METAL COUNTERTOP SUPPORT PRODUCT @ 4" O.C. MAX.
16. FINISH FOR FINISHES, REFER TO FINISH SCHEDULE FOR ADDITIONAL INFORMATION
17. WALL PANEL - SEE FINISH SCHEDULE
18. ADDITIONAL WALL PANEL, 2" X 4" PAPER
19. ADDITIONAL WALL PANEL, 2" X 4" PAPER
20. ADDITIONAL WALL PANEL, 2" X 4" PAPER
21. ADDITIONAL WALL PANEL, 2" X 4" PAPER
22. ART DISPLAY WALL - GALLERY SYSTEM STEEL CABLE SET.
23. POND TOUCHABLE PANELS 4" X 8".
24. NOT USED.
25. FINISHES AS WHITE BOND PAPER, BLDG. - CLAUDE SERIES 3, WITH 8" FINISH SCHEDULE.
26. NOT USED.
27. NOT USED.
28. ROLLER WINDOW BLADE
29. NOT USED.
30. NOT USED.
31. ADDITIONAL WALL PANEL, 2" X 4" PAPER
32. ADDITIONAL WALL PANEL, 2" X 4" PAPER
33. NOT USED.
34. FINISH TOP PANEL, SWITCH ADJUSTMENT CABINETS
35. 100% - WOODEN CORP. BOND STORAGE #1, 27" HIGH X 36" X 6" DEPT.
36. 100% - WOODEN CORP. BOND STORAGE #2, 27" HIGH X 36" X 6" DEPT.
37. 100% - WOODEN CORP. BOND STORAGE #3, 27" HIGH X 36" X 6" DEPT.
38. 100% - WOODEN CORP. BOND STORAGE #4, 27" HIGH X 36" X 6" DEPT.
39. 100% - WOODEN CORP. BOND STORAGE #5, 27" HIGH X 36" X 6" DEPT.
40. 100% - WOODEN CORP. BOND STORAGE #6, 27" HIGH X 36" X 6" DEPT.
41. 100% - WOODEN CORP. BOND STORAGE #7, 27" HIGH X 36" X 6" DEPT.
42. 100% - WOODEN CORP. BOND STORAGE #8, 27" HIGH X 36" X 6" DEPT.
43. 100% - WOODEN CORP. BOND STORAGE #9, 27" HIGH X 36" X 6" DEPT.
44. 100% - WOODEN CORP. BOND STORAGE #10, 27" HIGH X 36" X 6" DEPT.
45. 100% - WOODEN CORP. BOND STORAGE #11, 27" HIGH X 36" X 6" DEPT.
46. 100% - WOODEN CORP. BOND STORAGE #12, 27" HIGH X 36" X 6" DEPT.
47. PAINTED METAL
48. 100% - WOODEN CORP. BOND STORAGE #13, 27" HIGH X 36" X 6" DEPT.
49. 100% - WOODEN CORP. BOND STORAGE #14, 27" HIGH X 36" X 6" DEPT.
50. 100% - WOODEN CORP. BOND STORAGE #15, 27" HIGH X 36" X 6" DEPT.
51. 100% - WOODEN CORP. BOND STORAGE #16, 27" HIGH X 36" X 6" DEPT.
52. 100% - WOODEN CORP. BOND STORAGE #17, 27" HIGH X 36" X 6" DEPT.
53. 100% - WOODEN CORP. BOND STORAGE #18, 27" HIGH X 36" X 6" DEPT.
54. 100% - WOODEN CORP. BOND STORAGE #19, 27" HIGH X 36" X 6" DEPT.
55. 100% - WOODEN CORP. BOND STORAGE #20, 27" HIGH X 36" X 6" DEPT.
56. 100% - WOODEN CORP. BOND STORAGE #21, 27" HIGH X 36" X 6" DEPT.
57. 100% - WOODEN CORP. BOND STORAGE #22, 27" HIGH X 36" X 6" DEPT.
58. 100% - WOODEN CORP. BOND STORAGE #23, 27" HIGH X 36" X 6" DEPT.
59. 100% - WOODEN CORP. BOND STORAGE #24, 27" HIGH X 36" X 6" DEPT.
60. 100% - WOODEN CORP. BOND STORAGE #25, 27" HIGH X 36" X 6" DEPT.
61. 100% - WOODEN CORP. BOND STORAGE #26, 27" HIGH X 36" X 6" DEPT.
62. 100% - WOODEN CORP. BOND STORAGE #27, 27" HIGH X 36" X 6" DEPT.
63. 100% - WOODEN CORP. BOND STORAGE #28, 27" HIGH X 36" X 6" DEPT.
64. 100% - WOODEN CORP. BOND STORAGE #29, 27" HIGH X 36" X 6" DEPT.
65. 100% - WOODEN CORP. BOND STORAGE #30, 27" HIGH X 36" X 6" DEPT.
66. 100% - WOODEN CORP. BOND STORAGE #31, 27" HIGH X 36" X 6" DEPT.
67. 100% - WOODEN CORP. BOND STORAGE #32, 27" HIGH X 36" X 6" DEPT.
68. 100% - WOODEN CORP. BOND STORAGE #33, 27" HIGH X 36" X 6" DEPT.
69. 100% - WOODEN CORP. BOND STORAGE #34, 27" HIGH X 36" X 6" DEPT.
70. 100% - WOODEN CORP. BOND STORAGE #35, 27" HIGH X 36" X 6" DEPT.
71. 100% - WOODEN CORP. BOND STORAGE #36, 27" HIGH X 36" X 6" DEPT.
72. 100% - WOODEN CORP. BOND STORAGE #37, 27" HIGH X 36" X 6" DEPT.
73. 100% - WOODEN CORP. BOND STORAGE #38, 27" HIGH X 36" X 6" DEPT.
74. 100% - WOODEN CORP. BOND STORAGE #39, 27" HIGH X 36" X 6" DEPT.
75. 100% - WOODEN CORP. BOND STORAGE #40, 27" HIGH X 36" X 6" DEPT.
76. 100% - WOODEN CORP. BOND STORAGE #41, 27" HIGH X 36" X 6" DEPT.
77. 100% - WOODEN CORP. BOND STORAGE #42, 27" HIGH X 36" X 6" DEPT.
78. 100% - WOODEN CORP. BOND STORAGE #43, 27" HIGH X 36" X 6" DEPT.
79. 100% - WOODEN CORP. BOND STORAGE #44, 27" HIGH X 36" X 6" DEPT.
80. 100% - WOODEN CORP. BOND STORAGE #45, 27" HIGH X 36" X 6" DEPT.
81. 100% - WOODEN CORP. BOND STORAGE #46, 27" HIGH X 36" X 6" DEPT.
82. 100% - WOODEN CORP. BOND STORAGE #47, 27" HIGH X 36" X 6" DEPT.
83. 100% - WOODEN CORP. BOND STORAGE #48, 27" HIGH X 36" X 6" DEPT.
84. 100% - WOODEN CORP. BOND STORAGE #49, 27" HIGH X 36" X 6" DEPT.
85. 100% - WOODEN CORP. BOND STORAGE #50, 27" HIGH X 36" X 6" DEPT.
86. 100% - WOODEN CORP. BOND STORAGE #51, 27" HIGH X 36" X 6" DEPT.
87. 100% - WOODEN CORP. BOND STORAGE #52, 27" HIGH X 36" X 6" DEPT.
88. 100% - WOODEN CORP. BOND STORAGE #53, 27" HIGH X 36" X 6" DEPT.
89. 100% - WOODEN CORP. BOND STORAGE #54, 27" HIGH X 36" X 6" DEPT.
90. 100% - WOODEN CORP. BOND STORAGE #55, 27" HIGH X 36" X 6" DEPT.
91. 100% - WOODEN CORP. BOND STORAGE #56, 27" HIGH X 36" X 6" DEPT.
92. 100% - WOODEN CORP. BOND STORAGE #57, 27" HIGH X 36" X 6" DEPT.
93. 100% - WOODEN CORP. BOND STORAGE #58, 27" HIGH X 36" X 6" DEPT.
94. 100% - WOODEN CORP. BOND STORAGE #59, 27" HIGH X 36" X 6" DEPT.
95. 100% - WOODEN CORP. BOND STORAGE #60, 27" HIGH X 36" X 6" DEPT.
96. 100% - WOODEN CORP. BOND STORAGE #61, 27" HIGH X 36" X 6" DEPT.
97. 100% - WOODEN CORP. BOND STORAGE #62, 27" HIGH X 36" X 6" DEPT.
98. 100% - WOODEN CORP. BOND STORAGE #63, 27" HIGH X 36" X 6" DEPT.
99. 100% - WOODEN CORP. BOND STORAGE #64, 27" HIGH X 36" X 6" DEPT.
100. 100% - WOODEN CORP. BOND STORAGE #65, 27" HIGH X 36" X 6" DEPT.
101. 100% - WOODEN CORP. BOND STORAGE #66, 27" HIGH X 36" X 6" DEPT.
102. 100% - WOODEN CORP. BOND STORAGE #67, 27" HIGH X 36" X 6" DEPT.
103. 100% - WOODEN CORP. BOND STORAGE #68, 27" HIGH X 36" X 6" DEPT.
104. 100% - WOODEN CORP. BOND STORAGE #69, 27" HIGH X 36" X 6" DEPT.
105. 100% - WOODEN CORP. BOND STORAGE #70, 27" HIGH X 36" X 6" DEPT.
106. 100% - WOODEN CORP. BOND STORAGE #71, 27" HIGH X 36" X 6" DEPT.
107. 100% - WOODEN CORP. BOND STORAGE #72, 27" HIGH X 36" X 6" DEPT.
108. 100% - WOODEN CORP. BOND STORAGE #73, 27" HIGH X 36" X 6" DEPT.
109. 100% - WOODEN CORP. BOND STORAGE #74, 27" HIGH X 36" X 6" DEPT.
110. 100% - WOODEN CORP. BOND STORAGE #75, 27" HIGH X 36" X 6" DEPT.
111. 100% - WOODEN CORP. BOND STORAGE #76, 27" HIGH X 36" X 6" DEPT.
112. 100% - WOODEN CORP. BOND STORAGE #77, 27" HIGH X 36" X 6" DEPT.
113. 100% - WOODEN CORP. BOND STORAGE #78, 27" HIGH X 36" X 6" DEPT.
114. 100% - WOODEN CORP. BOND STORAGE #79, 27" HIGH X 36" X 6" DEPT.
115. 100% - WOODEN CORP. BOND STORAGE #80, 27" HIGH X 36" X 6" DEPT.
116. 100% - WOODEN CORP. BOND STORAGE #81, 27" HIGH X 36" X 6" DEPT.
117. 100% - WOODEN CORP. BOND STORAGE #82, 27" HIGH X 36" X 6" DEPT.
118. 100% - WOODEN CORP. BOND STORAGE #83, 27" HIGH X 36" X 6" DEPT.
119. 100% - WOODEN CORP. BOND STORAGE #84, 27" HIGH X 36" X 6" DEPT.
120. 100% - WOODEN CORP. BOND STORAGE #85, 27" HIGH X 36" X 6" DEPT.
121. 100% - WOODEN CORP. BOND STORAGE #86, 27" HIGH X 36" X 6" DEPT.
122. 100% - WOODEN CORP. BOND STORAGE #87, 27" HIGH X 36" X 6" DEPT.
123. 100% - WOODEN CORP. BOND STORAGE #88, 27" HIGH X 36" X 6" DEPT.
124. 100% - WOODEN CORP. BOND STORAGE #89, 27" HIGH X 36" X 6" DEPT.
125. 100% - WOODEN CORP. BOND STORAGE #90, 27" HIGH X 36" X 6" DEPT.
126. 100% - WOODEN CORP. BOND STORAGE #91, 27" HIGH X 36" X 6" DEPT.
127. 100% - WOODEN CORP. BOND STORAGE #92, 27" HIGH X 36" X 6" DEPT.
128. 100% - WOODEN CORP. BOND STORAGE #93, 27" HIGH X 36" X 6" DEPT.
129. 100% - WOODEN CORP. BOND STORAGE #94, 27" HIGH X 36" X 6" DEPT.
130. 100% - WOODEN CORP. BOND STORAGE #95, 27" HIGH X 36" X 6" DEPT.
131. 100% - WOODEN CORP. BOND STORAGE #96, 27" HIGH X 36" X 6" DEPT.
132. 100% - WOODEN CORP. BOND STORAGE #97, 27" HIGH X 36" X 6" DEPT.
133. 100% - WOODEN CORP. BOND STORAGE #98, 27" HIGH X 36" X 6" DEPT.
134. 100% - WOODEN CORP. BOND STORAGE #99, 27" HIGH X 36" X 6" DEPT.
135. 100% - WOODEN CORP. BOND STORAGE #100, 27" HIGH X 36" X 6" DEPT.



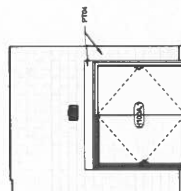
1 ELEVATION - CLASSROOM G206
20' x 11' 6"



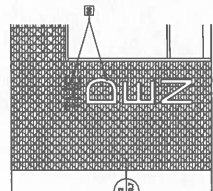
2 ELEVATION - CLASSROOM G206
20' x 11' 6"



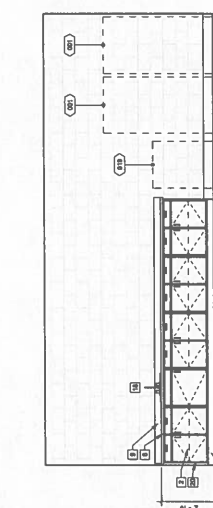
3 ELEVATION - CLASSROOM G107
20' x 11' 6"



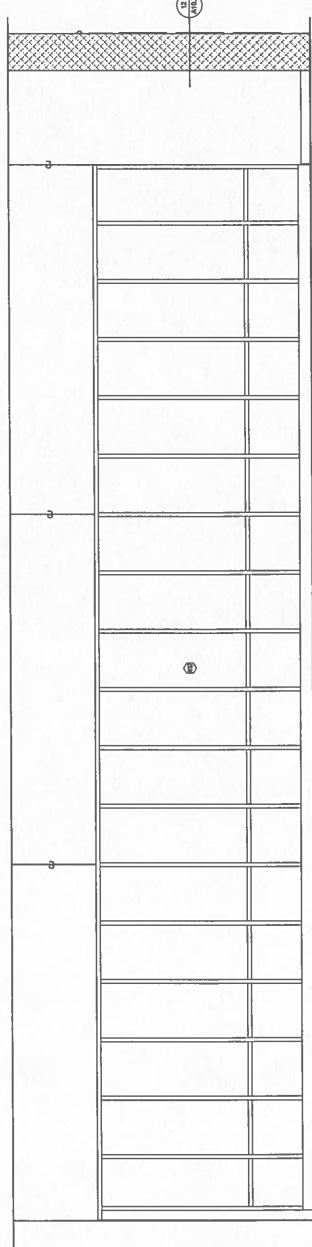
4 CORRIDOR H100A TO F100D
20' x 11' 6"



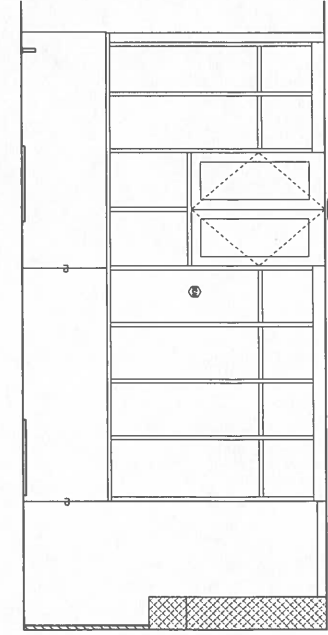
5 CONCESSION - B117
20' x 11' 6"



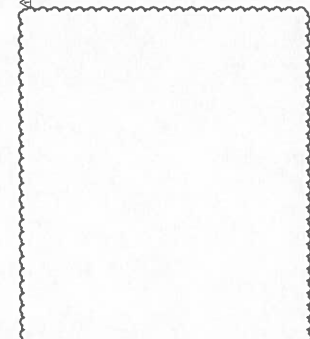
6 CORRIDOR - B5117
20' x 11' 6"



7 ELEVATION - AREA F
20' x 11' 6"



8 ELEVATION - AREA F
20' x 11' 6"



9 ELEVATION - AREA F
20' x 11' 6"

NO.	DESCRIPTION	DATE
1	ISSUED FOR PERMIT	08/22/14
2	ISSUED FOR BIDDING	08/22/14
3	ISSUED FOR CONSTRUCTION	08/22/14
4	ISSUED FOR CORRECTIONS	08/22/14
5	ISSUED FOR AS-BUILT	08/22/14

INTERIOR ELEVATIONS
Architect's Project No: 2106-204
Drawing No: 5.30.



KEYPLAN

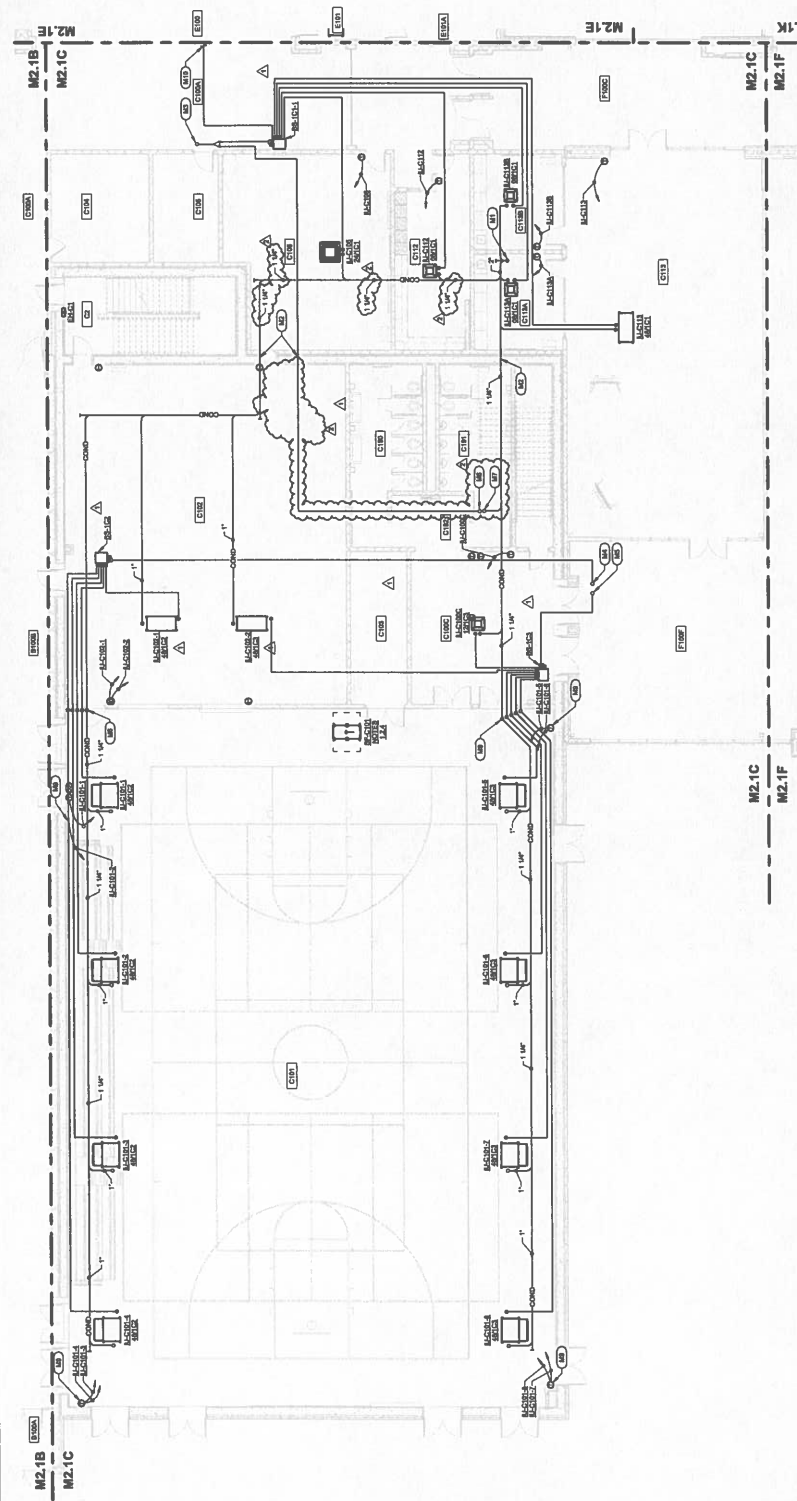
Revised	By	Checked	Date
1			
2			
3			
4			
5			
6			
7			
8			
9			
10			

Sheet Title:
Architect's Project No.:
Date:
Drawing No.:

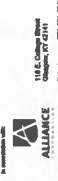
2106-204
May, 20

M2.1C

- PLAN NOTES:**
- 1. ALL PIPING SHALL BE INSTALLED IN ACCORDANCE WITH THE CITY OF HOPKINSVILLE, KY PLUMBING CODE.
 - 2. ALL PIPING SHALL BE INSTALLED IN ACCORDANCE WITH THE CITY OF HOPKINSVILLE, KY PLUMBING CODE.
 - 3. ALL PIPING SHALL BE INSTALLED IN ACCORDANCE WITH THE CITY OF HOPKINSVILLE, KY PLUMBING CODE.
 - 4. ALL PIPING SHALL BE INSTALLED IN ACCORDANCE WITH THE CITY OF HOPKINSVILLE, KY PLUMBING CODE.
 - 5. ALL PIPING SHALL BE INSTALLED IN ACCORDANCE WITH THE CITY OF HOPKINSVILLE, KY PLUMBING CODE.
 - 6. ALL PIPING SHALL BE INSTALLED IN ACCORDANCE WITH THE CITY OF HOPKINSVILLE, KY PLUMBING CODE.
 - 7. ALL PIPING SHALL BE INSTALLED IN ACCORDANCE WITH THE CITY OF HOPKINSVILLE, KY PLUMBING CODE.
 - 8. ALL PIPING SHALL BE INSTALLED IN ACCORDANCE WITH THE CITY OF HOPKINSVILLE, KY PLUMBING CODE.
 - 9. ALL PIPING SHALL BE INSTALLED IN ACCORDANCE WITH THE CITY OF HOPKINSVILLE, KY PLUMBING CODE.
 - 10. ALL PIPING SHALL BE INSTALLED IN ACCORDANCE WITH THE CITY OF HOPKINSVILLE, KY PLUMBING CODE.



FIRST FLOOR HVAC PIPING PLAN - AREA C
1/8" = 1'-0"



NO.	REVISION	DATE	BY	CHECKED BY
1	ISSUED FOR PERMIT	05/22/10		
2	REVISED PER COMMENTS	05/22/10		
3	REVISED PER COMMENTS	05/22/10		
4	REVISED PER COMMENTS	05/22/10		
5	REVISED PER COMMENTS	05/22/10		
6	REVISED PER COMMENTS	05/22/10		
7	REVISED PER COMMENTS	05/22/10		
8	REVISED PER COMMENTS	05/22/10		
9	REVISED PER COMMENTS	05/22/10		
10	REVISED PER COMMENTS	05/22/10		

DESIGNED BY: [Name]
CHECKED BY: [Name]
DATE: [Date]

PROJECT NO.: 2106-204
DATE: May, 20

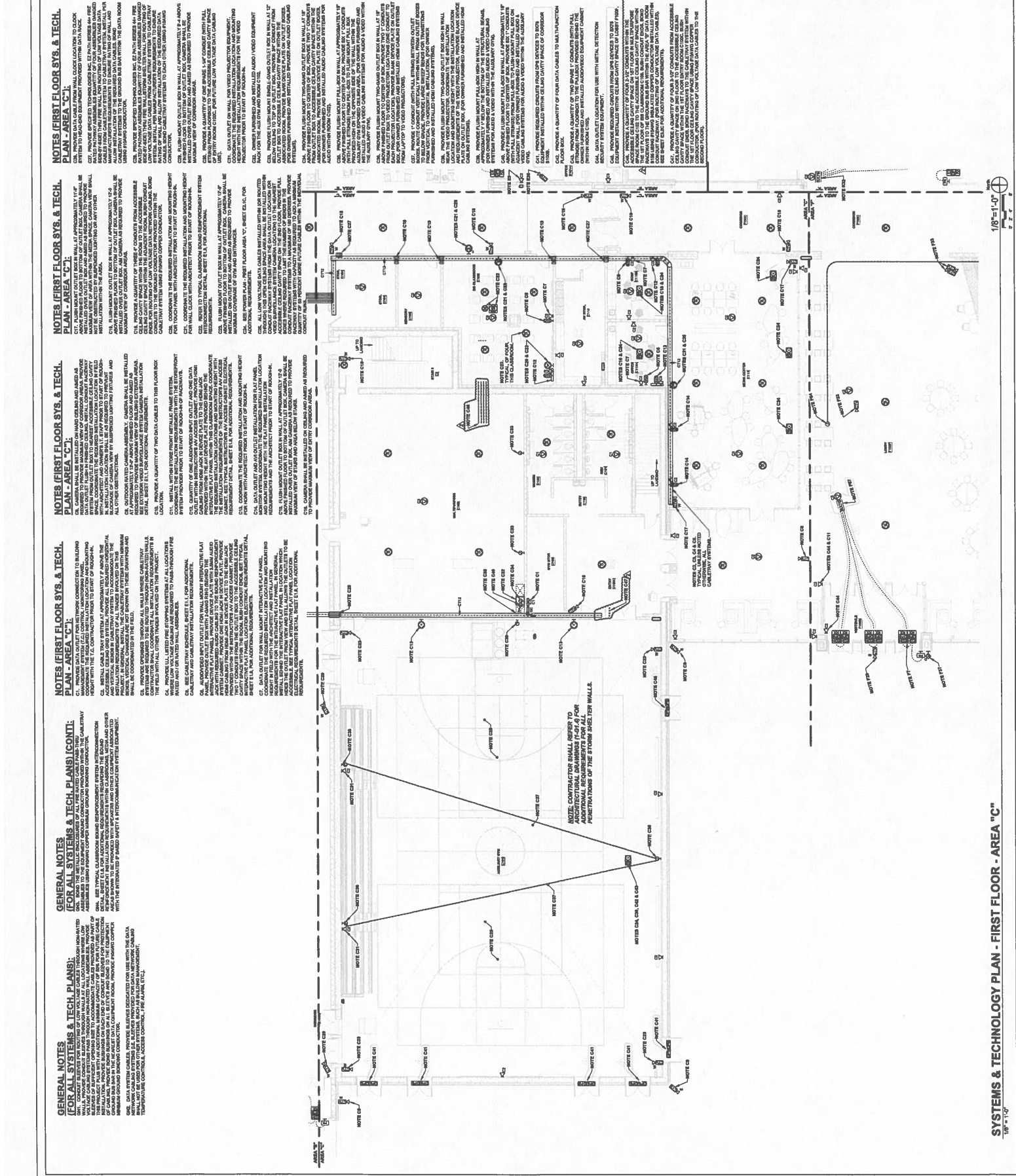
DRAWING NO.: E3.1C

SYSTEMS & TECHNOLOGY PLAN - FIRST FLOOR - AREA "C"

NOTES (FIRST FLOOR SYS. & TECH. PLAN - AREA "C")

NOTES (FIRST FLOOR SYS. & TECH. PLAN - AREA "C")

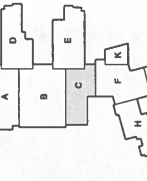
NOTES (FIRST FLOOR SYS. & TECH. PLAN - AREA "C")



1/8" = 1'-0"

SYSTEMS & TECHNOLOGY PLAN - FIRST FLOOR - AREA "C"

E3.1C



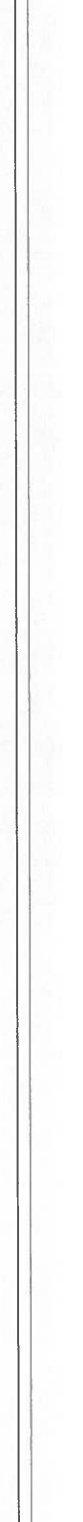
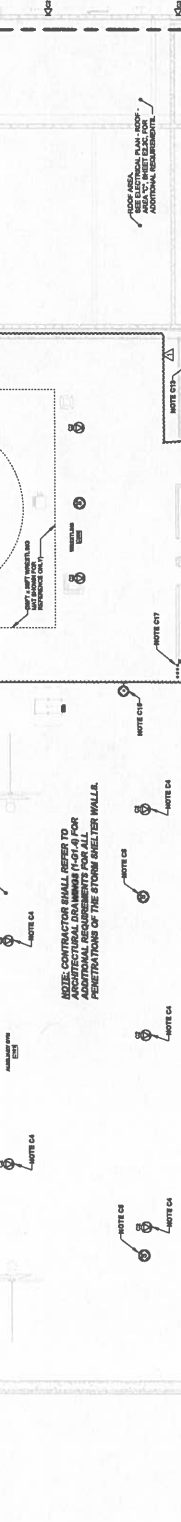
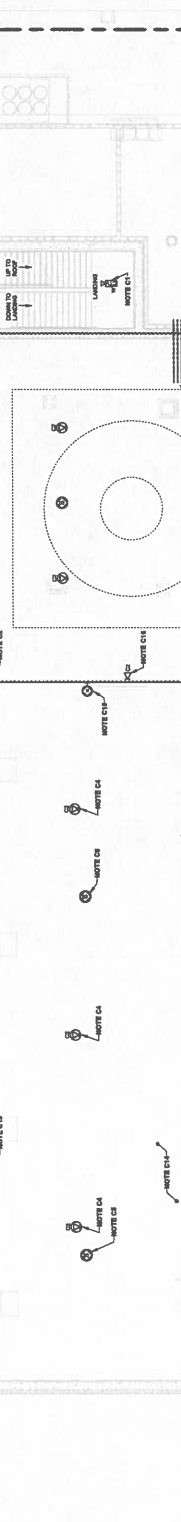
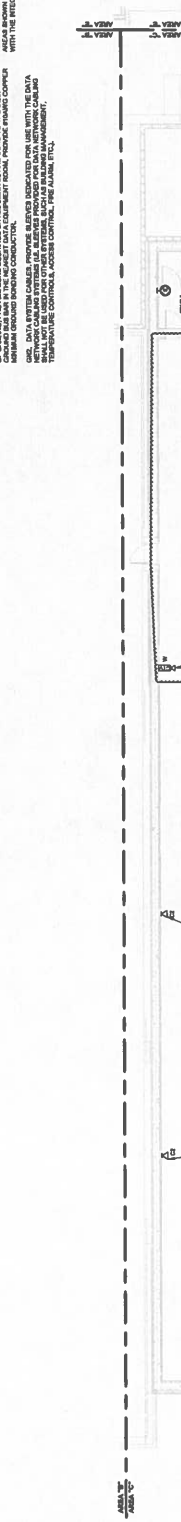
GENERAL NOTES (FOR ALL SYSTEMS & TECH. PLANS):
 01. PROVIDE CONDUIT ABOVE PENETRATIONS THROUGH WALLS AT ALL LOCATIONS WHERE LOW VOLTAGE SYSTEMS ARE INSTALLED.
 02. PROVIDE CONDUIT ABOVE PENETRATIONS THROUGH WALLS AT ALL LOCATIONS WHERE LOW VOLTAGE SYSTEMS ARE INSTALLED.
 03. PROVIDE CONDUIT ABOVE PENETRATIONS THROUGH WALLS AT ALL LOCATIONS WHERE LOW VOLTAGE SYSTEMS ARE INSTALLED.
 04. PROVIDE CONDUIT ABOVE PENETRATIONS THROUGH WALLS AT ALL LOCATIONS WHERE LOW VOLTAGE SYSTEMS ARE INSTALLED.
 05. PROVIDE CONDUIT ABOVE PENETRATIONS THROUGH WALLS AT ALL LOCATIONS WHERE LOW VOLTAGE SYSTEMS ARE INSTALLED.

GENERAL NOTES (FOR ALL SYSTEMS & TECH. PLANS) (CONT):
 06. PROVIDE CONDUIT ABOVE PENETRATIONS THROUGH WALLS AT ALL LOCATIONS WHERE LOW VOLTAGE SYSTEMS ARE INSTALLED.
 07. PROVIDE CONDUIT ABOVE PENETRATIONS THROUGH WALLS AT ALL LOCATIONS WHERE LOW VOLTAGE SYSTEMS ARE INSTALLED.
 08. PROVIDE CONDUIT ABOVE PENETRATIONS THROUGH WALLS AT ALL LOCATIONS WHERE LOW VOLTAGE SYSTEMS ARE INSTALLED.
 09. PROVIDE CONDUIT ABOVE PENETRATIONS THROUGH WALLS AT ALL LOCATIONS WHERE LOW VOLTAGE SYSTEMS ARE INSTALLED.
 10. PROVIDE CONDUIT ABOVE PENETRATIONS THROUGH WALLS AT ALL LOCATIONS WHERE LOW VOLTAGE SYSTEMS ARE INSTALLED.

NOTES (SECOND FLOOR SYS. & TECH. PLAN - AREA "C"):
 C1. PROVIDE A QUANTITY OF FOUR (4) CONDUITS WITHIN THE WALL PENETRATIONS TO ACCOMMODATE THE CABLES AND CONDUITS TO BE INSTALLED.
 C2. PROVIDE A QUANTITY OF FOUR (4) CONDUITS WITHIN THE WALL PENETRATIONS TO ACCOMMODATE THE CABLES AND CONDUITS TO BE INSTALLED.
 C3. PROVIDE A QUANTITY OF FOUR (4) CONDUITS WITHIN THE WALL PENETRATIONS TO ACCOMMODATE THE CABLES AND CONDUITS TO BE INSTALLED.
 C4. PROVIDE A QUANTITY OF FOUR (4) CONDUITS WITHIN THE WALL PENETRATIONS TO ACCOMMODATE THE CABLES AND CONDUITS TO BE INSTALLED.
 C5. PROVIDE A QUANTITY OF FOUR (4) CONDUITS WITHIN THE WALL PENETRATIONS TO ACCOMMODATE THE CABLES AND CONDUITS TO BE INSTALLED.

NOTES (SECOND FLOOR SYS. & TECH. PLAN - AREA "C") (CONT):
 C6. PROVIDE A QUANTITY OF FOUR (4) CONDUITS WITHIN THE WALL PENETRATIONS TO ACCOMMODATE THE CABLES AND CONDUITS TO BE INSTALLED.
 C7. PROVIDE A QUANTITY OF FOUR (4) CONDUITS WITHIN THE WALL PENETRATIONS TO ACCOMMODATE THE CABLES AND CONDUITS TO BE INSTALLED.
 C8. PROVIDE A QUANTITY OF FOUR (4) CONDUITS WITHIN THE WALL PENETRATIONS TO ACCOMMODATE THE CABLES AND CONDUITS TO BE INSTALLED.
 C9. PROVIDE A QUANTITY OF FOUR (4) CONDUITS WITHIN THE WALL PENETRATIONS TO ACCOMMODATE THE CABLES AND CONDUITS TO BE INSTALLED.
 C10. PROVIDE A QUANTITY OF FOUR (4) CONDUITS WITHIN THE WALL PENETRATIONS TO ACCOMMODATE THE CABLES AND CONDUITS TO BE INSTALLED.

NOTES (SECOND FLOOR SYS. & TECH. PLAN - AREA "C") (CONT):
 C11. PROVIDE A QUANTITY OF FOUR (4) CONDUITS WITHIN THE WALL PENETRATIONS TO ACCOMMODATE THE CABLES AND CONDUITS TO BE INSTALLED.
 C12. PROVIDE A QUANTITY OF FOUR (4) CONDUITS WITHIN THE WALL PENETRATIONS TO ACCOMMODATE THE CABLES AND CONDUITS TO BE INSTALLED.
 C13. PROVIDE A QUANTITY OF FOUR (4) CONDUITS WITHIN THE WALL PENETRATIONS TO ACCOMMODATE THE CABLES AND CONDUITS TO BE INSTALLED.
 C14. PROVIDE A QUANTITY OF FOUR (4) CONDUITS WITHIN THE WALL PENETRATIONS TO ACCOMMODATE THE CABLES AND CONDUITS TO BE INSTALLED.
 C15. PROVIDE A QUANTITY OF FOUR (4) CONDUITS WITHIN THE WALL PENETRATIONS TO ACCOMMODATE THE CABLES AND CONDUITS TO BE INSTALLED.



SYSTEMS & TECHNOLOGY PLAN - SECOND FLOOR - AREA "C"

1/8" = 1'-0"

1/8" = 1'-0"

1/8" = 1'-0"

1/8" = 1'-0"

1/8" = 1'-0"

1/8" = 1'-0"

1/8" = 1'-0"

1/8" = 1'-0"

1/8" = 1'-0"

1/8" = 1'-0"

1/8" = 1'-0"

1/8" = 1'-0"

1/8" = 1'-0"

1/8" = 1'-0"

1/8" = 1'-0"

1/8" = 1'-0"

1/8" = 1'-0"

1/8" = 1'-0"

1/8" = 1'-0"

1/8" = 1'-0"

1/8" = 1'-0"

1/8" = 1'-0"

1/8" = 1'-0"

1/8" = 1'-0"

1/8" = 1'-0"

1/8" = 1'-0"

1/8" = 1'-0"

1/8" = 1'-0"

1/8" = 1'-0"

1/8" = 1'-0"



NOE # 190 25-104

6146 FT CAMPBELL BLVD
HOPKINSVILLE, KY 42404



ALLIANCE
118 E. COLONY AVE
HOPKINSVILLE, KY 42404
Telephone: 274-891-8911



K&S Engineering, PLLC
124 Hillside Drive
Hopkinsville, TN 38463
Telephone: 274-894-2000

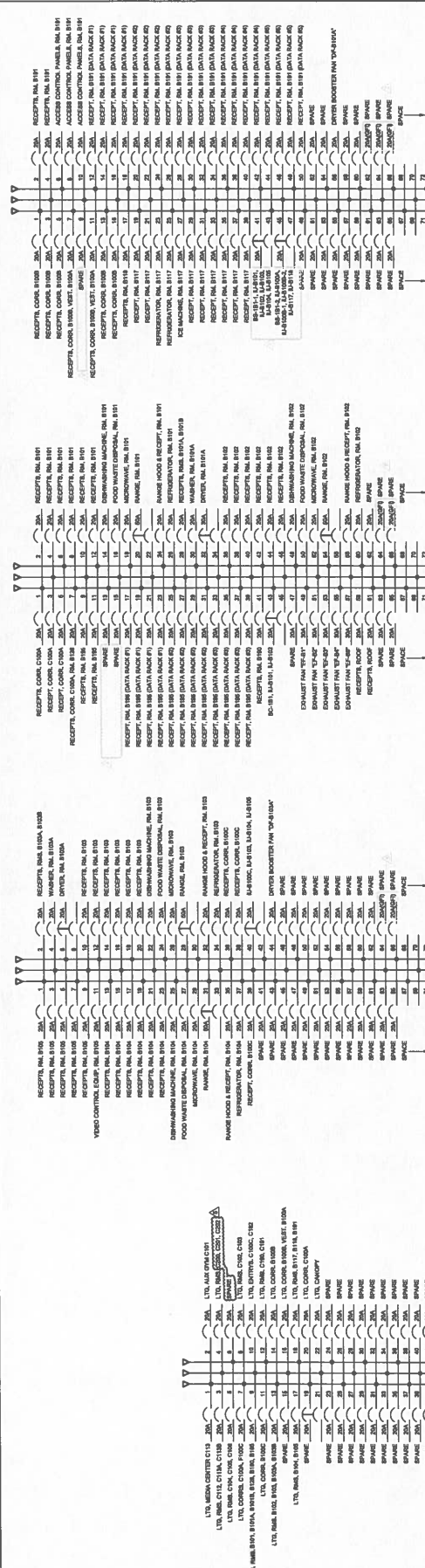
WBW
1115 S. 10th Street
Hopkinsville, TN 38463
Telephone: 274-894-2000

GT
GT Bridge and Equipment Co.
1000 S. 10th Street
Hopkinsville, TN 38463
Telephone: 274-894-2000

Design By	Checked By	Date

Sheet No. BUSING DIAGRAMS, BLDG AREA C-1 (1ST FLOOR) - NORMAL POWER
Architect's Project No. 2106-204
Date: May, 20

E6.3

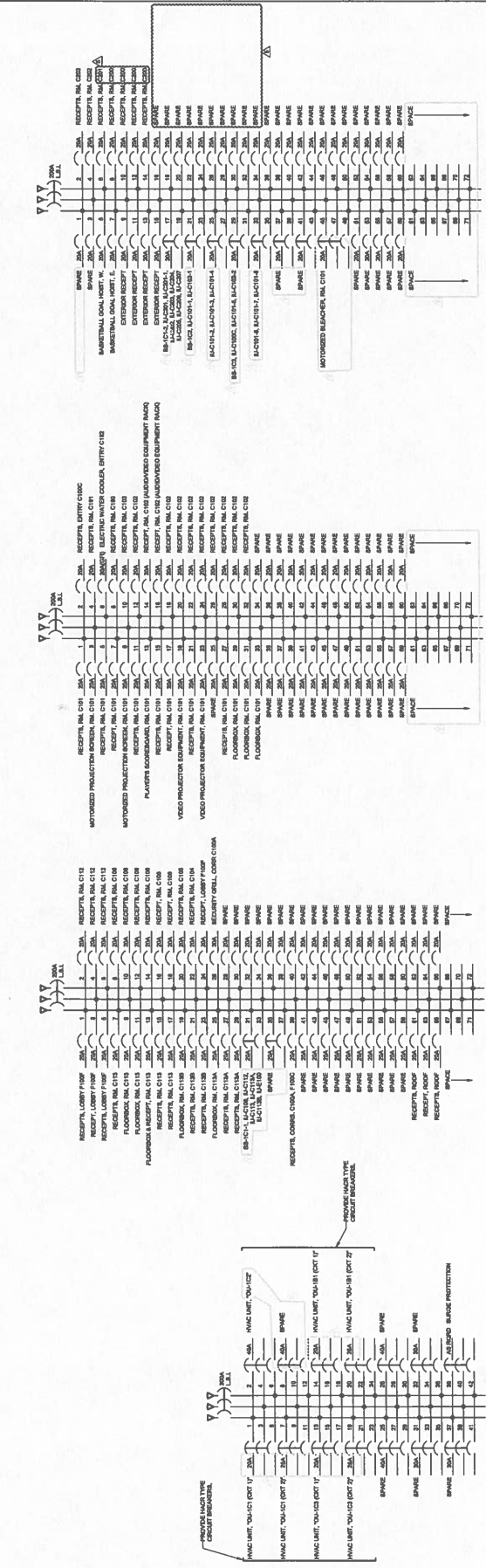


PANEL "H11C"
300A, 480VOLT, 3PH, 4W
72 BRACKE
PROVIDE WITH HINGED COVER ENCLOSURE

PANEL "H12C"
300A, 480VOLT, 3PH, 4W
72 BRACKE
PROVIDE WITH HINGED COVER ENCLOSURE

PANEL "L11C"
300A, 480VOLT, 3PH, 4W
72 BRACKE
PROVIDE WITH HINGED COVER ENCLOSURE

PANEL "H13C"
300A, 480VOLT, 3PH, 4W
72 BRACKE
PROVIDE WITH HINGED COVER ENCLOSURE



PANEL "L13C"
300A, 480VOLT, 3PH, 4W
72 BRACKE
PROVIDE WITH HINGED COVER ENCLOSURE

PANEL "L14C"
300A, 480VOLT, 3PH, 4W
72 BRACKE
PROVIDE WITH HINGED COVER ENCLOSURE

PANEL "L15C"
300A, 480VOLT, 3PH, 4W
72 BRACKE
PROVIDE WITH HINGED COVER ENCLOSURE

PANEL "L16C"
300A, 480VOLT, 3PH, 4W
72 BRACKE
PROVIDE WITH HINGED COVER ENCLOSURE

PANEL "L17C"
300A, 480VOLT, 3PH, 4W
72 BRACKE
PROVIDE WITH HINGED COVER ENCLOSURE

PANEL "L18C"
300A, 480VOLT, 3PH, 4W
72 BRACKE
PROVIDE WITH HINGED COVER ENCLOSURE

PANEL "L19C"
300A, 480VOLT, 3PH, 4W
72 BRACKE
PROVIDE WITH HINGED COVER ENCLOSURE



PANEL "L20C"
300A, 480VOLT, 3PH, 4W
72 BRACKE
PROVIDE WITH HINGED COVER ENCLOSURE

PANEL "L21C"
300A, 480VOLT, 3PH, 4W
72 BRACKE
PROVIDE WITH HINGED COVER ENCLOSURE

PANEL "L22C"
300A, 480VOLT, 3PH, 4W
72 BRACKE
PROVIDE WITH HINGED COVER ENCLOSURE

PANEL "L23C"
300A, 480VOLT, 3PH, 4W
72 BRACKE
PROVIDE WITH HINGED COVER ENCLOSURE



ATLAS COMPANIES

PCCO #004

The Atlas Companies
5101 Commerce Crossing Drive
Louisville, Kentucky 40229
Phone: (502) 714-9867

Project: KY-23-113 - Hopkinsville-Christian Co Acad
5185 Fort Campbell Blvd
Hopkinsville, Kentucky 42240

Prime Contract Change Order #004: CE #018 - PR-20

TO:	Alliance Corporation Glasgow, Kentucky		
DATE CREATED:	7/09/2024	ATLAS PM:	Carrie Craig
REQUEST RECEIVED FROM:		REVISION:	0
REFERENCE:		CHANGE REASON:	Change Order
FIELD CHANGE:	No	CONTRACT FOR:	KY-23-11302:Hopkinsville-Christian Co Acad
SCHEDULE IMPACT:		TOTAL AMOUNT:	(\$4,938.00)

DESCRIPTION:
CE #018 - PR-20
Pricing below is for the changes to the doors and hardware per PR 20.
The swing of 202 has changed and we are not pricing a new frame.
Labor excludes frame install.

ATTACHMENTS:

CHANGE ORDER LINE ITEMS:

PCCO #004

#	SubJob	Cost Code	Description	Type	Amount
1	N/A	01-08-1400 - Wood Doors	Delete WD's 203, 204, 205, 206, 207	MATERIALS	(\$1,925.00)
2	N/A	01-08-9000 - Div 08 Miscellaneous	Delete hdw for doors 203, 204, 205, 207	MATERIALS	(\$3,963.00)
3	N/A	01-08-9000 - Div 08 Miscellaneous	Use hardware from 206 for 201 added opening	MATERIALS	\$0.00
4	N/A	01-08-1213 - Hollow Metal Frames	Add HM frame 201	MATERIALS	\$1,250.00
5	N/A	01-08-1400 - Wood Doors	Add WD 201	MATERIALS	\$750.00
6	N/A	01-01-1000 - Installation	Delete 203, 204, 205, 206, 207 and add 201	LABOR	(\$1,050.00)
Subtotal:					(\$4,938.00)
Grand Total:					(\$4,938.00)

The original (Contract Sum)	\$362,000.00
Net change by previously authorized Change Orders	\$5,621.53
The contract sum prior to this Change Order was	\$367,621.53
The contract sum will be decreased by this Change Order in the amount of	(\$4,938.00)
The new contract sum including this Change Order will be	\$362,683.53
The contract time will not be changed by this Change Order.	

<input type="checkbox"/> Change Order Approved - No official paperwork required <input type="checkbox"/> Change Order Approved - Official paperwork to follow
--

Alliance Corporation

Glasgow, Kentucky

SIGNATURE _____ DATE _____

FACPAC Contract Change Order Supplemental Information Form (Ref# 59615)

Form Status: Saved

Tier 1 Project: Consolidated High School

BG Number: 22-104

Status: Active

District: Christian County (HB678) (115)

Phase: Project Initiation (View Checklist)

Contract: The Atlas Companies , 0080, Dr, Frames, Wood Drs, Finish Hardware and Misc
Specialties

Type: CM Bid Package

Proposed

Change Order Number	2
Time Extension Required	No
Date Of Change Order	10/14/2024
Change Order Amount To Date	Decrease

Construction Contingency

Calculations below are project wide. Remaining negative Construction Contingency may require the submission of a revised BG1.

Current Approved Amount	\$6,320,436.60
Net Approved COs	\$365,699.78
Remaining After Approved COs	\$5,954,736.82
Net All COs	\$381,833.09
Remaining After All COs	\$5,938,603.51

This Requested Change Order Amount (\$4,938.00)

+/-

Change In A/E Fee This Change Order

+/-

Change In CM Fee This Change Order \$0.00

+/-

Remaining Construction Contingency \$5,938,603.51

Balance

Contract Change Requested By Local Board of Education

Contract Change Reason Code Reduction of Scope

Change Order Description And Justification

Deduct doors and hardware per PR #20, area C 2nd floor redesign.

Cost Benefit To Owner

This will result in a cost savings to the owner.

Contract unit prices have been utilized No
to support the cost associated with this

change order.

Detailed Cost Breakdown

Contract unit prices have not been utilized, provide a detailed cost breakdown which separates labor, material, profit and overhead.

Detail Item	Amount	Percent of Total
Labor	(\$1,050.00)	21.26%
Materials	(\$3,888.00)	78.74%
Profit and Overhead		0.00%
Bond Insurance		0.00%
Cost Breakdown Total:	\$-4,938.00	

Cost for this Change Order supported by an alternate bid or competitive price quote

Explain Why

Executed contract with contractor.

Change Order Supplemental Information Form Signature Page (Online Form Ref# 59615)

Architect

Date

Construction Manager

Date

Finance Officer

Date

Local Board of Education Designee

Date