



AIA® Document G731™ – 2019

Change Order, Construction Manager as Adviser Edition

PROJECT: (name and address)

Christian County High School
5185 Fort Campbell Blvd Hopkinsville,
KY 42240

OWNER: (name and address)

Christian County Board of Education
200 Glass Avenue
Hopkinsville, KY 42240

CONTRACTOR: (name and address)

A & A Contracting
380 Bowers Road
Rochester, KY 42273

CONTRACT INFORMATION:

Contract For: BP 095-02 ACS
Panel Ceilings

Date: September 08, 2023

ARCHITECT: (name and address)

Hafer PSC
21 Southeast Third St, Ste 800
Evansville, IN 47708

CHANGE ORDER INFORMATION:

Change Order Number: 039

Date: October 14, 2024

CONSTRUCTION MANAGER: (name and address)

Alliance Corporation
116 E. College Street
Glasgow, KY 42141

THE CONTRACT IS CHANGED AS FOLLOWS:

(Insert a detailed description of the change and, if applicable, attach or reference specific exhibits. Also include agreed upon adjustments attributable to executed Construction Change Directives.)

Additional ceiling scope per PR #20, area C 2nd floor redesign.

The original Contract Sum was	\$	1,046,208.00
Net change by previously authorized Change Orders	\$	1,760.00
The Contract Sum prior to this Change Order was	\$	1,047,968.00
The Contract Sum will be increased by this Change Order in the amount of	\$	1,351.00
The new Contract Sum including this Change Order will be	\$	1,049,319.00

The Contract Time will be unchanged by Zero (0) days.
The Contractor's Work shall be substantially complete on

NOTE: This Change Order does not include adjustments to the Contract Sum or Guaranteed Maximum Price, or the Contract Time, that have been authorized by Construction Change Directive until the cost and time have been agreed upon by both the Owner and Contractor, in which case a Change Order is executed to supersede the Construction Change Directive.

NOT VALID UNTIL SIGNED BY THE ARCHITECT, CONSTRUCTION MANAGER, CONTRACTOR, AND OWNER.

Hafer PSC

ARCHITECT (Firm name)

SIGNATURE

Eric Rang, AIA, Senior Associate

PRINTED NAME AND TITLE

DATE:

A & A Contracting

CONTRACTOR (Firm name)

SIGNATURE

Andy Smith

PRINTED NAME AND TITLE

DATE:

Alliance Corporation

CONSTRUCTION MANAGER (Firm name)

SIGNATURE

Kevin Hitchel, Sr. Project Manager

PRINTED NAME AND TITLE

DATE:

Christian County Board of Education

OWNER (Firm name)

SIGNATURE

Christopher Bentzel, Superintendent

PRINTED NAME AND TITLE

DATE:



PROPOSED CHANGE ORDER

PROJECT Christian County High School

CONTRACTOR/SUPPLIER A&A Contracting

BID PACKAGE 095

DETAIL ITEM		AMOUNT
LABOR	\$	285.00
MATERIALS	\$	868.00
PROFIT & OVERHEAD	\$	172.00
BOND INSURANCE	\$	26.00
COST BREAKDOWN TOTAL	\$	1,351.00

DESCRIPTION

Additional Ceiling Scope per PR #20, Area C 2nd Floor Redesign.

PR # 20 (ATTACH PR)

CHANGE ORDER INITIATED BY:

- ARCHITECT/ENGINEER
- OWNER
- CONTRACTOR
- CM
- CODE OFFICIAL
- OTHER _____

**PLEASE INCLUDE THIS FORM WITH EVERY
CHANGE ORDER.**

PROPOSAL REQUEST

Project: Christian County High School
5185 Ft. Campbell Blvd
Hopkinsville, KY 42240

PR No.: 019

Date: June 28, 2024

Owner: Christian County Public Schools
222 Glass Ave
Hopkinsville, KY 42240

Project Number: 2106-204

Contract for:

To: Kevin Hitchell
Alliance Corporation
116 E. College Steet
Glasgow, KY 42141

RE: **Area C Second Floor**

Please submit an itemized quotation for changes in the Contract Sum and/or Time incidental to proposed modifications to the Contract Documents described herein.
THIS IS NOT A CHANGE ORDER NOR A DIRECTION TO PROCEED WITH THE WORK DESCRIBED HEREIN.

Description:

Delete ROTC Suite buildout as originally shown in the bid documents. Provide a large wresting room, office and storage room as shown in the attached revised sheets.

Attachments: Revised Drawings A1.2, A1.2C, A2.2C, A7.2, A9.3, A11.6, A11.9, ID4.1, ID4.2, M1.2C, M2.1C, M2.2C, E1.12, E2.2C, E3.1, E3.1C, E3.2C, E4.2C, E6.3

By: Eric Rang

CC:



GENERAL NOTES:

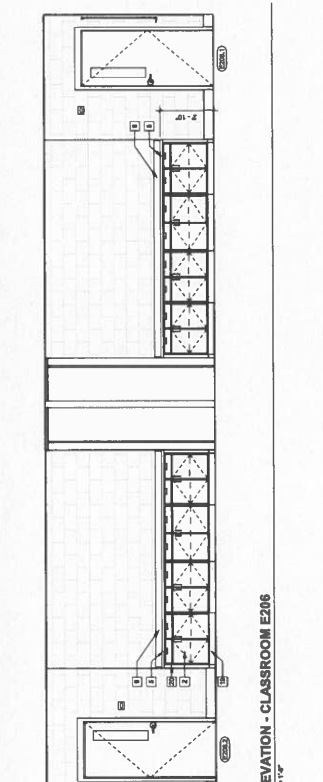
- A. GENERAL CONTRACTOR TO COORDINATE WITH OTHERS FOR ALL EQUIPMENT, MATERIALS, AND INSTALLATION. PROVIDE AND MAINTAIN PROTECTIVE COVERINGS TO PREVENT DAMAGE TO EXISTING WORK AND SURROUNDINGS PRIOR TO INSTALLATION.
- B. PROVIDE ALL MATERIALS AND EQUIPMENT TO BE INSTALLED IN ACCORDANCE WITH THE MANUFACTURER'S RECOMMENDATIONS AND ALL APPLICABLE CODES AND REGULATIONS. PROVIDE SPECIFICATIONS FOR ALL MATERIALS AND EQUIPMENT TO BE INSTALLED.
- C. COORDINATE ALL RECEIPTABLES, SWITCHES, LABELS, DIVICES AND CONDUIT FROM TO INSTALLATION.
- D. ALL EXPOSED SURFACES TO BE LAMINATED UNLESS OTHERWISE NOTED. ALL COUNTERTOPS AND BACKSPLASHES TO BE 1/2" MINIMUM THICKNESS. PROVIDE BACKSPLASH AT ALL LOCATIONS WHERE COUNTERTOP MEETS WALL. PROVIDE FILLER PANELS AS REQUIRED TO ACHIEVE A COMPLETE FIT OF COUNTERTOP TO ADJACENT WALLS AND CEILING.
- E. PROVIDE WOOD BLOOMING AS REQUIRED.
- F. FIELD VERIFY ALL CONDITIONS AND MEASUREMENTS PRIOR TO INSTALLATION. REPORT TO ARCHITECT IMMEDIATELY UPON DISCOVERY OF ANY DISCREPANCIES OR CONDITIONS NOT SHOWN ON DRAWINGS.
- G. PROVIDE LOCKS AT FINISH AND WOOD ROOM CABINETRY.
- H. PROVIDE LOCKS AT FINISH AND WOOD ROOM CABINETRY.

REFERENCE NOTES:

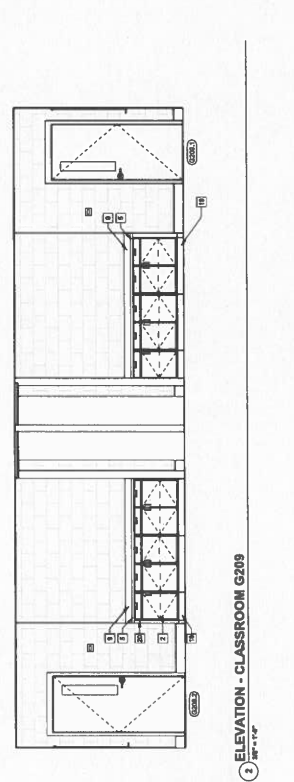
- 1 PLASTIC LAMINATE CLASS UPPER CABINET
- 2 PLASTIC LAMINATE CLASS WALL CABINET
- 3 PLASTIC LAMINATE CLASS WALL CABINET
- 4 PLASTIC LAMINATE CLASS WALL CABINET
- 5 PLASTIC LAMINATE CLASS WALL CABINET
- 6 PLASTIC LAMINATE CLASS WALL CABINET
- 7 STAINLESS STEEL COUNTERTOP
- 8 EPoxy COUNTERTOP
- 9 BACKSPLASH - MATCH COUNTERTOP FINISH (IF LAM)
- 10 WOOD UPPER CABINET
- 11 WOOD WALL CABINET
- 12 PAINTED METAL UPPER CABINET
- 13 PAINTED METAL WALL CABINET
- 14 METAL COUNTERTOP - BLENDED FINISH (IF LAM)
- 15 FINISHED TOP PANEL SWITCH ADJUSTMENT CABINETRY
- 16 FINISHED TOP PANEL SWITCH ADJUSTMENT CABINETRY
- 17 WALL PANEL - SEE FINISH SCHEDULE
- 18 FINISHED TOP PANEL SWITCH ADJUSTMENT CABINETRY
- 19 FINISHED TOP PANEL SWITCH ADJUSTMENT CABINETRY
- 20 FINISHED TOP PANEL SWITCH ADJUSTMENT CABINETRY
- 21 FINISHED TOP PANEL SWITCH ADJUSTMENT CABINETRY
- 22 FINISHED TOP PANEL SWITCH ADJUSTMENT CABINETRY
- 23 FINISHED TOP PANEL SWITCH ADJUSTMENT CABINETRY
- 24 FINISHED TOP PANEL SWITCH ADJUSTMENT CABINETRY
- 25 FINISHED TOP PANEL SWITCH ADJUSTMENT CABINETRY
- 26 FINISHED TOP PANEL SWITCH ADJUSTMENT CABINETRY
- 27 FINISHED TOP PANEL SWITCH ADJUSTMENT CABINETRY
- 28 FINISHED TOP PANEL SWITCH ADJUSTMENT CABINETRY
- 29 FINISHED TOP PANEL SWITCH ADJUSTMENT CABINETRY
- 30 FINISHED TOP PANEL SWITCH ADJUSTMENT CABINETRY
- 31 FINISHED TOP PANEL SWITCH ADJUSTMENT CABINETRY
- 32 FINISHED TOP PANEL SWITCH ADJUSTMENT CABINETRY
- 33 FINISHED TOP PANEL SWITCH ADJUSTMENT CABINETRY
- 34 FINISHED TOP PANEL SWITCH ADJUSTMENT CABINETRY
- 35 FINISHED TOP PANEL SWITCH ADJUSTMENT CABINETRY
- 36 FINISHED TOP PANEL SWITCH ADJUSTMENT CABINETRY
- 37 FINISHED TOP PANEL SWITCH ADJUSTMENT CABINETRY
- 38 FINISHED TOP PANEL SWITCH ADJUSTMENT CABINETRY
- 39 FINISHED TOP PANEL SWITCH ADJUSTMENT CABINETRY
- 40 FINISHED TOP PANEL SWITCH ADJUSTMENT CABINETRY
- 41 FINISHED TOP PANEL SWITCH ADJUSTMENT CABINETRY
- 42 FINISHED TOP PANEL SWITCH ADJUSTMENT CABINETRY
- 43 FINISHED TOP PANEL SWITCH ADJUSTMENT CABINETRY
- 44 FINISHED TOP PANEL SWITCH ADJUSTMENT CABINETRY
- 45 FINISHED TOP PANEL SWITCH ADJUSTMENT CABINETRY
- 46 FINISHED TOP PANEL SWITCH ADJUSTMENT CABINETRY
- 47 FINISHED TOP PANEL SWITCH ADJUSTMENT CABINETRY
- 48 FINISHED TOP PANEL SWITCH ADJUSTMENT CABINETRY
- 49 FINISHED TOP PANEL SWITCH ADJUSTMENT CABINETRY
- 50 FINISHED TOP PANEL SWITCH ADJUSTMENT CABINETRY
- 51 FINISHED TOP PANEL SWITCH ADJUSTMENT CABINETRY
- 52 FINISHED TOP PANEL SWITCH ADJUSTMENT CABINETRY
- 53 FINISHED TOP PANEL SWITCH ADJUSTMENT CABINETRY
- 54 FINISHED TOP PANEL SWITCH ADJUSTMENT CABINETRY
- 55 FINISHED TOP PANEL SWITCH ADJUSTMENT CABINETRY
- 56 FINISHED TOP PANEL SWITCH ADJUSTMENT CABINETRY
- 57 FINISHED TOP PANEL SWITCH ADJUSTMENT CABINETRY
- 58 FINISHED TOP PANEL SWITCH ADJUSTMENT CABINETRY
- 59 FINISHED TOP PANEL SWITCH ADJUSTMENT CABINETRY
- 60 FINISHED TOP PANEL SWITCH ADJUSTMENT CABINETRY
- 61 FINISHED TOP PANEL SWITCH ADJUSTMENT CABINETRY
- 62 FINISHED TOP PANEL SWITCH ADJUSTMENT CABINETRY
- 63 FINISHED TOP PANEL SWITCH ADJUSTMENT CABINETRY
- 64 FINISHED TOP PANEL SWITCH ADJUSTMENT CABINETRY
- 65 FINISHED TOP PANEL SWITCH ADJUSTMENT CABINETRY
- 66 FINISHED TOP PANEL SWITCH ADJUSTMENT CABINETRY
- 67 FINISHED TOP PANEL SWITCH ADJUSTMENT CABINETRY
- 68 FINISHED TOP PANEL SWITCH ADJUSTMENT CABINETRY
- 69 FINISHED TOP PANEL SWITCH ADJUSTMENT CABINETRY
- 70 FINISHED TOP PANEL SWITCH ADJUSTMENT CABINETRY
- 71 FINISHED TOP PANEL SWITCH ADJUSTMENT CABINETRY
- 72 FINISHED TOP PANEL SWITCH ADJUSTMENT CABINETRY
- 73 FINISHED TOP PANEL SWITCH ADJUSTMENT CABINETRY
- 74 FINISHED TOP PANEL SWITCH ADJUSTMENT CABINETRY
- 75 FINISHED TOP PANEL SWITCH ADJUSTMENT CABINETRY
- 76 FINISHED TOP PANEL SWITCH ADJUSTMENT CABINETRY
- 77 FINISHED TOP PANEL SWITCH ADJUSTMENT CABINETRY
- 78 FINISHED TOP PANEL SWITCH ADJUSTMENT CABINETRY
- 79 FINISHED TOP PANEL SWITCH ADJUSTMENT CABINETRY
- 80 FINISHED TOP PANEL SWITCH ADJUSTMENT CABINETRY
- 81 FINISHED TOP PANEL SWITCH ADJUSTMENT CABINETRY
- 82 FINISHED TOP PANEL SWITCH ADJUSTMENT CABINETRY
- 83 FINISHED TOP PANEL SWITCH ADJUSTMENT CABINETRY
- 84 FINISHED TOP PANEL SWITCH ADJUSTMENT CABINETRY
- 85 FINISHED TOP PANEL SWITCH ADJUSTMENT CABINETRY
- 86 FINISHED TOP PANEL SWITCH ADJUSTMENT CABINETRY
- 87 FINISHED TOP PANEL SWITCH ADJUSTMENT CABINETRY
- 88 FINISHED TOP PANEL SWITCH ADJUSTMENT CABINETRY
- 89 FINISHED TOP PANEL SWITCH ADJUSTMENT CABINETRY
- 90 FINISHED TOP PANEL SWITCH ADJUSTMENT CABINETRY
- 91 FINISHED TOP PANEL SWITCH ADJUSTMENT CABINETRY
- 92 FINISHED TOP PANEL SWITCH ADJUSTMENT CABINETRY
- 93 FINISHED TOP PANEL SWITCH ADJUSTMENT CABINETRY
- 94 FINISHED TOP PANEL SWITCH ADJUSTMENT CABINETRY
- 95 FINISHED TOP PANEL SWITCH ADJUSTMENT CABINETRY
- 96 FINISHED TOP PANEL SWITCH ADJUSTMENT CABINETRY
- 97 FINISHED TOP PANEL SWITCH ADJUSTMENT CABINETRY
- 98 FINISHED TOP PANEL SWITCH ADJUSTMENT CABINETRY
- 99 FINISHED TOP PANEL SWITCH ADJUSTMENT CABINETRY
- 100 FINISHED TOP PANEL SWITCH ADJUSTMENT CABINETRY

INTERIOR ELEVATIONS

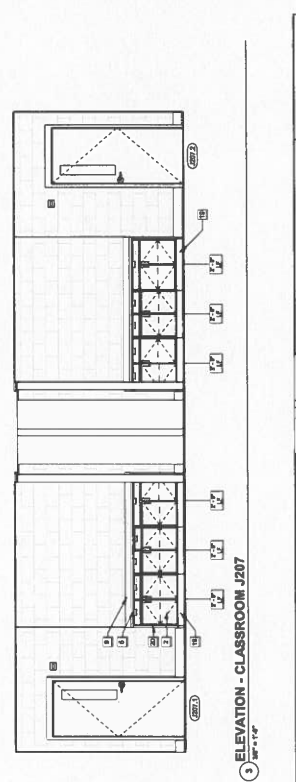
Architect's Project No: 2106-204
Date: 5.30.
Drawing No: A11.6



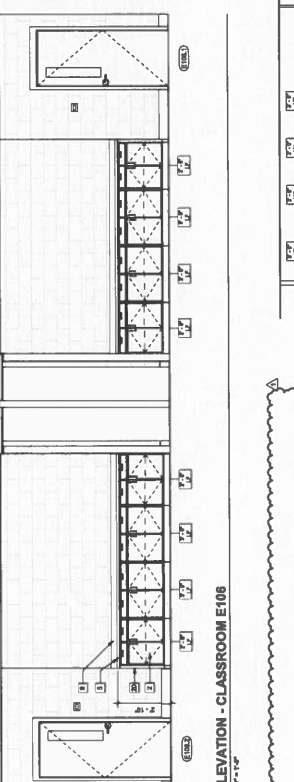
1 ELEVATION - CLASSROOM E206
30'-11 1/2" x 11'-0"



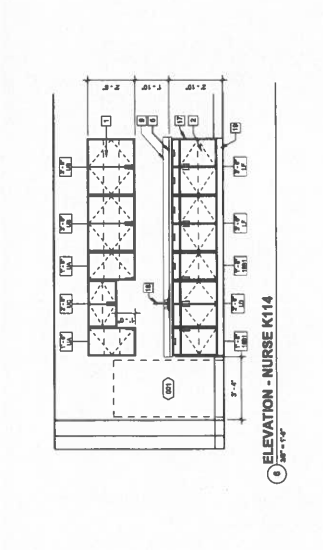
2 ELEVATION - CLASSROOM G209
30'-11 1/2" x 11'-0"



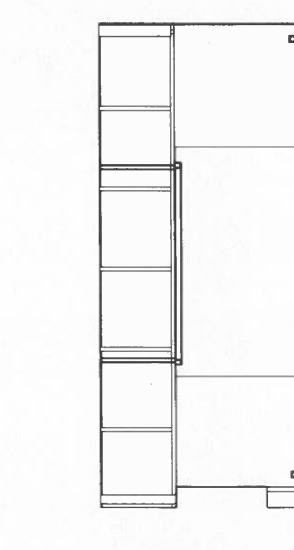
3 ELEVATION - CLASSROOM J207
30'-11 1/2" x 11'-0"



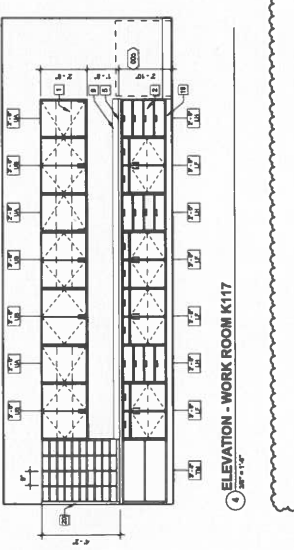
6 ELEVATION - CLASSROOM E106
30'-11 1/2" x 11'-0"



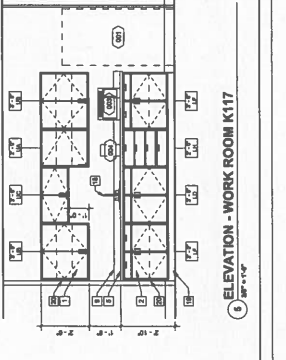
9 ELEVATION - NURSE K114
30'-11 1/2" x 11'-0"



7 ELEVATION - RECEPTION K101
30'-11 1/2" x 11'-0"



4 ELEVATION - WORK ROOM K117
30'-11 1/2" x 11'-0"



6 ELEVATION - WORK ROOM K117
30'-11 1/2" x 11'-0"



In partnership with:

- ALLIANCE** 118 S. Campbell Street, Hopkinsville, KY 27040. Telephone: 774-6118
- bell** 187 Folsom Drive, Hopkinsville, KY 27040. Telephone: 774-6648
- K+S Engineering, PLLC** 124 Campbell Drive, Hopkinsville, KY 27040. Telephone: 871-4746
- WBW ARCHITECTS** 1100 Campbell Street, Hopkinsville, KY 27040. Telephone: 774-6620
- GT** 1111 1st Street, Hopkinsville, KY 27040. Telephone: 813-0211

GENERAL NOTES:

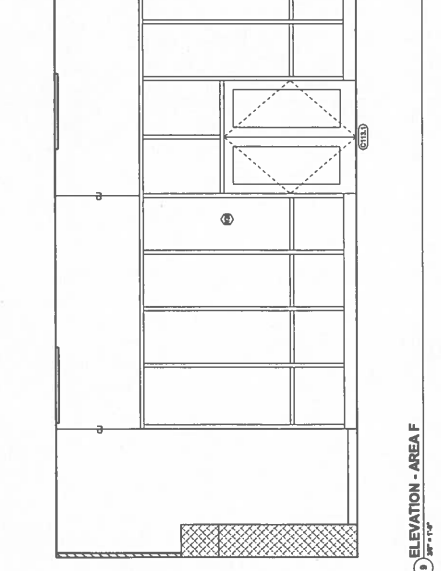
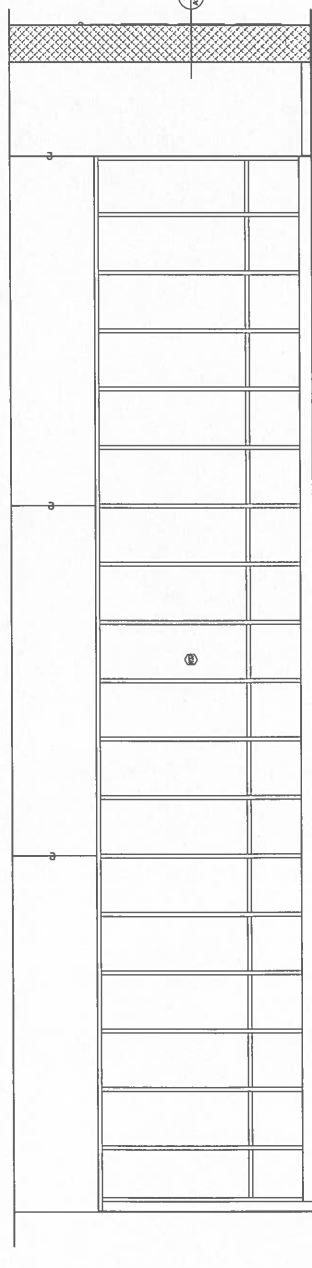
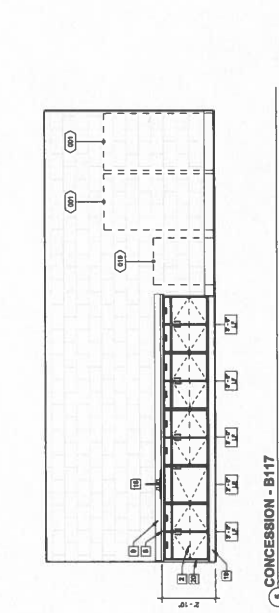
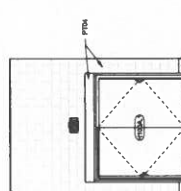
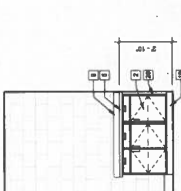
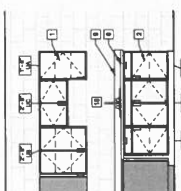
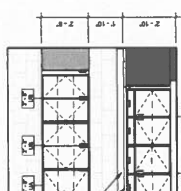
- A. GENERAL CONTRACTOR TO COORDINATE WITH OWNER FOR ALL EQUIPMENT OPERATIONS TO BE INSTALLED PRIOR TO INSTALLATION.
- B. COORDINATE ALL ELECTRICAL AND COMMUNICATIONS INSTALLATIONS WITH OWNER. COORDINATE ALL ELECTRICAL, MECHANICAL, AND PLUMBING WORK PRIOR TO INSTALLATION.
- C. ALL EXPOSED SURFACES TO BE LAMINATED UNLESS NOTED OTHERWISE. ALL COUNTERTOPS AND BACKSPLASHES TO BE 3/4" THICK WOOD WITH CONTIGUOUS SEAMS AT EDGE OF BACKSPLASH AND COUNTERTOP.
- D. PROVIDE BACKSPLASH AT ALL LOCATIONS WHERE COUNTERTOP MEETS WALL.
- E. PROVIDE ELLER PANELS AS REQUIRED TO ACHIEVE A COMPLETE FIT OF COUNTERTOP TO ADJACENT WALLS AND ISLANDS.
- F. PROVIDE WOOD BLOOMS AS REQUIRED.
- G. FIELD VERIFY ALL CONDITIONS AND MEASUREMENTS PRIOR TO FABRICATION.
- H. REFER TO CD DRAWINGS FOR FISH MOUNTS.
- I. THICKNESS OF COUNTERTOP AS SHOWN ON CAD SHALL BE AS NOTED BELOW.
- J. PROVIDE LOCKS AT ALL DOORS AND WINDOWS.
- K. PROVIDE LOCKS AT HALLS & MECH ROOM CLOSETWORK.

REFERENCE NOTES:

- 1 PLASTIC LAMINATE CLAD UPPER CABINET
- 2 PLASTIC LAMINATE CLAD BASE CABINET
- 3 PLASTIC LAMINATE CLAD WALL CLAD WITH CLEAT HANDBOUNT
- 4 CLEAT HANDBOUNT
- 5 PLASTIC LAMINATE CLAD COUNTERTOP, WITH 3MM EDGE-BANDING
- 6 SOLID SURFACE COUNTERTOP
- 7 STAINLESS STEEL COUNTERTOP
- 8 EPoxy COUNTERTOP
- 9 BACKSPLASH - MATCH COUNTERTOP (FR. IF LINO)
- 10 WOOD UPPER CABINET
- 11 WOOD WALL CABINET
- 12 PAINTED METAL UPPER CABINET
- 13 PAINTED METAL BASE CABINET
- 14 METAL COUNTERTOP SUPPORT BRACKET 8" x 4" x 1/2" GAL. VAL.
- 15 FINISHED METAL MATCH ADJACENT CABINETS
- 16 FIN. SET PLUMBING EQUIPMENT FOR MECHANICAL INFORMATION
- 17 WALL LINE - 1/4" FROM BACKSPLASH COUNTERTOP
- 18 ADJACENTIAL WALL PANEL, COP. PAPER
- 19 ADJACENTIAL WALL PANEL, COP. PAPER
- 20 ADJACENTIAL WALL PANEL, COP. PAPER
- 21 ADJACENTIAL WALL PANEL, COP. PAPER
- 22 ART DISPLAY RAIL - GALLERY SYSTEM ESTER. CABLE KIT
- 23 FLOOR TACKABLE PANELE 4" x 8"
- 24 NOT USED.
- 25 PERGOLA WOOD BOARD SFP, S.D.S., CHARGE SERIES 3, WITH BUSHING ON ELECTRICAL
- 26 NOT USED.
- 27 NOT USED.
- 28 ROLLER WINDOW SHADE
- 29 NOT USED.
- 30 ADJACENTIAL WALL PANEL, PT17
- 31 ADJACENTIAL WALL PANEL, PT17
- 32 NOT USED.
- 33 FINISHED TOP PANEL, MATCH ADJACENT CABINETS
- 34 3/4" - WOODER CORP. BAND STORAGE (R. 27" W x 3" D x 3" H)
- 35 3/4" - WOODER CORP. BAND STORAGE (R. 27" W x 3" D x 3" H)
- 36 3/4" - WOODER CORP. BAND STORAGE (R. 27" W x 3" D x 3" H)
- 37 3/4" - WOODER CORP. BAND STORAGE (R. 27" W x 3" D x 3" H)
- 38 3/4" - WOODER CORP. BAND STORAGE (R. 27" W x 3" D x 3" H)
- 39 3/4" - WOODER CORP. BAND STORAGE (R. 27" W x 3" D x 3" H)
- 40 FINISHED METAL, TYP. PAINTED TO MATCH WOOD
- 41 PAINTED METAL
- 42 3/4" - WOODER CORP. BAND STORAGE (R. 27" W x 3" D x 3" H)
- 43 3/4" - WOODER CORP. BAND STORAGE (R. 27" W x 3" D x 3" H)
- 44 3/4" - WOODER CORP. BAND STORAGE (R. 27" W x 3" D x 3" H)
- 45 3/4" - WOODER CORP. BAND STORAGE (R. 27" W x 3" D x 3" H)
- 46 FINISHED METAL
- 47 PAINTED METAL, TYP.
- 48 NOT USED.
- 49 PAINTED GYM, PT17
- 50 CONTROL JOINT, PAINT TO MATCH ADJACENT FINISH
- 51 PAINTED CONCRETE WALL, PT17
- 52 RESILIENT COVE BASE
- 53 HVAC GRILLE, PAINTED, PT17
- 54 OVERHEAD ROLLER DOOR
- 55 NOT USED.
- 56 NOT USED.
- 57 3/4" - BUCK PAINTED LAMBS CUT ACROSS WITH LETTERS
- 58 CUSTOM BENCH BACK PAINTED 1/4" THICK PVC LETTERS ON BACKSPLASH WITH 1/4" THICK PAINTED FORM BOARD FRONT
- 59 3/4" - WOODER CORP. BAND STORAGE (R. 27" W x 3" D x 3" H)
- 60 3/4" - WOODER CORP. BAND STORAGE (R. 27" W x 3" D x 3" H)
- 61 3/4" - WOODER CORP. BAND STORAGE (R. 27" W x 3" D x 3" H)
- 62 3/4" - WOODER CORP. BAND STORAGE (R. 27" W x 3" D x 3" H)
- 63 3/4" - WOODER CORP. BAND STORAGE (R. 27" W x 3" D x 3" H)
- 64 3/4" - WOODER CORP. BAND STORAGE (R. 27" W x 3" D x 3" H)
- 65 3/4" - WOODER CORP. BAND STORAGE (R. 27" W x 3" D x 3" H)
- 66 3/4" - WOODER CORP. BAND STORAGE (R. 27" W x 3" D x 3" H)
- 67 3/4" - WOODER CORP. BAND STORAGE (R. 27" W x 3" D x 3" H)
- 68 3/4" - WOODER CORP. BAND STORAGE (R. 27" W x 3" D x 3" H)
- 69 3/4" - WOODER CORP. BAND STORAGE (R. 27" W x 3" D x 3" H)
- 70 3/4" - WOODER CORP. BAND STORAGE (R. 27" W x 3" D x 3" H)
- 71 3/4" - WOODER CORP. BAND STORAGE (R. 27" W x 3" D x 3" H)
- 72 3/4" - WOODER CORP. BAND STORAGE (R. 27" W x 3" D x 3" H)
- 73 3/4" - WOODER CORP. BAND STORAGE (R. 27" W x 3" D x 3" H)
- 74 3/4" - WOODER CORP. BAND STORAGE (R. 27" W x 3" D x 3" H)
- 75 3/4" - WOODER CORP. BAND STORAGE (R. 27" W x 3" D x 3" H)
- 76 3/4" - WOODER CORP. BAND STORAGE (R. 27" W x 3" D x 3" H)
- 77 3/4" - WOODER CORP. BAND STORAGE (R. 27" W x 3" D x 3" H)
- 78 3/4" - WOODER CORP. BAND STORAGE (R. 27" W x 3" D x 3" H)
- 79 3/4" - WOODER CORP. BAND STORAGE (R. 27" W x 3" D x 3" H)
- 80 3/4" - WOODER CORP. BAND STORAGE (R. 27" W x 3" D x 3" H)
- 81 3/4" - WOODER CORP. BAND STORAGE (R. 27" W x 3" D x 3" H)
- 82 3/4" - WOODER CORP. BAND STORAGE (R. 27" W x 3" D x 3" H)
- 83 3/4" - WOODER CORP. BAND STORAGE (R. 27" W x 3" D x 3" H)
- 84 3/4" - WOODER CORP. BAND STORAGE (R. 27" W x 3" D x 3" H)
- 85 3/4" - WOODER CORP. BAND STORAGE (R. 27" W x 3" D x 3" H)
- 86 3/4" - WOODER CORP. BAND STORAGE (R. 27" W x 3" D x 3" H)
- 87 3/4" - WOODER CORP. BAND STORAGE (R. 27" W x 3" D x 3" H)
- 88 3/4" - WOODER CORP. BAND STORAGE (R. 27" W x 3" D x 3" H)
- 89 3/4" - WOODER CORP. BAND STORAGE (R. 27" W x 3" D x 3" H)
- 90 3/4" - WOODER CORP. BAND STORAGE (R. 27" W x 3" D x 3" H)
- 91 3/4" - WOODER CORP. BAND STORAGE (R. 27" W x 3" D x 3" H)
- 92 3/4" - WOODER CORP. BAND STORAGE (R. 27" W x 3" D x 3" H)
- 93 3/4" - WOODER CORP. BAND STORAGE (R. 27" W x 3" D x 3" H)
- 94 3/4" - WOODER CORP. BAND STORAGE (R. 27" W x 3" D x 3" H)
- 95 3/4" - WOODER CORP. BAND STORAGE (R. 27" W x 3" D x 3" H)
- 96 3/4" - WOODER CORP. BAND STORAGE (R. 27" W x 3" D x 3" H)
- 97 3/4" - WOODER CORP. BAND STORAGE (R. 27" W x 3" D x 3" H)
- 98 3/4" - WOODER CORP. BAND STORAGE (R. 27" W x 3" D x 3" H)
- 99 3/4" - WOODER CORP. BAND STORAGE (R. 27" W x 3" D x 3" H)
- 100 3/4" - WOODER CORP. BAND STORAGE (R. 27" W x 3" D x 3" H)

REFERENCE NOTES:

- 1 PLASTIC LAMINATE CLAD UPPER CABINET
- 2 PLASTIC LAMINATE CLAD BASE CABINET
- 3 PLASTIC LAMINATE CLAD WALL CLAD WITH CLEAT HANDBOUNT
- 4 CLEAT HANDBOUNT
- 5 PLASTIC LAMINATE CLAD COUNTERTOP, WITH 3MM EDGE-BANDING
- 6 SOLID SURFACE COUNTERTOP
- 7 STAINLESS STEEL COUNTERTOP
- 8 EPoxy COUNTERTOP
- 9 BACKSPLASH - MATCH COUNTERTOP (FR. IF LINO)
- 10 WOOD UPPER CABINET
- 11 WOOD WALL CABINET
- 12 PAINTED METAL UPPER CABINET
- 13 PAINTED METAL BASE CABINET
- 14 METAL COUNTERTOP SUPPORT BRACKET 8" x 4" x 1/2" GAL. VAL.
- 15 FINISHED METAL MATCH ADJACENT CABINETS
- 16 FIN. SET PLUMBING EQUIPMENT FOR MECHANICAL INFORMATION
- 17 WALL LINE - 1/4" FROM BACKSPLASH COUNTERTOP
- 18 ADJACENTIAL WALL PANEL, COP. PAPER
- 19 ADJACENTIAL WALL PANEL, COP. PAPER
- 20 ADJACENTIAL WALL PANEL, COP. PAPER
- 21 ADJACENTIAL WALL PANEL, COP. PAPER
- 22 ART DISPLAY RAIL - GALLERY SYSTEM ESTER. CABLE KIT
- 23 FLOOR TACKABLE PANELE 4" x 8"
- 24 NOT USED.
- 25 PERGOLA WOOD BOARD SFP, S.D.S., CHARGE SERIES 3, WITH BUSHING ON ELECTRICAL
- 26 NOT USED.
- 27 NOT USED.
- 28 ROLLER WINDOW SHADE
- 29 NOT USED.
- 30 ADJACENTIAL WALL PANEL, PT17
- 31 ADJACENTIAL WALL PANEL, PT17
- 32 NOT USED.
- 33 FINISHED TOP PANEL, MATCH ADJACENT CABINETS
- 34 3/4" - WOODER CORP. BAND STORAGE (R. 27" W x 3" D x 3" H)
- 35 3/4" - WOODER CORP. BAND STORAGE (R. 27" W x 3" D x 3" H)
- 36 3/4" - WOODER CORP. BAND STORAGE (R. 27" W x 3" D x 3" H)
- 37 3/4" - WOODER CORP. BAND STORAGE (R. 27" W x 3" D x 3" H)
- 38 3/4" - WOODER CORP. BAND STORAGE (R. 27" W x 3" D x 3" H)
- 39 3/4" - WOODER CORP. BAND STORAGE (R. 27" W x 3" D x 3" H)
- 40 FINISHED METAL, TYP. PAINTED TO MATCH WOOD
- 41 PAINTED METAL
- 42 3/4" - WOODER CORP. BAND STORAGE (R. 27" W x 3" D x 3" H)
- 43 3/4" - WOODER CORP. BAND STORAGE (R. 27" W x 3" D x 3" H)
- 44 3/4" - WOODER CORP. BAND STORAGE (R. 27" W x 3" D x 3" H)
- 45 3/4" - WOODER CORP. BAND STORAGE (R. 27" W x 3" D x 3" H)
- 46 FINISHED METAL
- 47 PAINTED METAL, TYP.
- 48 NOT USED.
- 49 PAINTED GYM, PT17
- 50 CONTROL JOINT, PAINT TO MATCH ADJACENT FINISH
- 51 PAINTED CONCRETE WALL, PT17
- 52 RESILIENT COVE BASE
- 53 HVAC GRILLE, PAINTED, PT17
- 54 OVERHEAD ROLLER DOOR
- 55 NOT USED.
- 56 NOT USED.
- 57 3/4" - BUCK PAINTED LAMBS CUT ACROSS WITH LETTERS
- 58 CUSTOM BENCH BACK PAINTED 1/4" THICK PVC LETTERS ON BACKSPLASH WITH 1/4" THICK PAINTED FORM BOARD FRONT
- 59 3/4" - WOODER CORP. BAND STORAGE (R. 27" W x 3" D x 3" H)
- 60 3/4" - WOODER CORP. BAND STORAGE (R. 27" W x 3" D x 3" H)
- 61 3/4" - WOODER CORP. BAND STORAGE (R. 27" W x 3" D x 3" H)
- 62 3/4" - WOODER CORP. BAND STORAGE (R. 27" W x 3" D x 3" H)
- 63 3/4" - WOODER CORP. BAND STORAGE (R. 27" W x 3" D x 3" H)
- 64 3/4" - WOODER CORP. BAND STORAGE (R. 27" W x 3" D x 3" H)
- 65 3/4" - WOODER CORP. BAND STORAGE (R. 27" W x 3" D x 3" H)
- 66 3/4" - WOODER CORP. BAND STORAGE (R. 27" W x 3" D x 3" H)
- 67 3/4" - WOODER CORP. BAND STORAGE (R. 27" W x 3" D x 3" H)
- 68 3/4" - WOODER CORP. BAND STORAGE (R. 27" W x 3" D x 3" H)
- 69 3/4" - WOODER CORP. BAND STORAGE (R. 27" W x 3" D x 3" H)
- 70 3/4" - WOODER CORP. BAND STORAGE (R. 27" W x 3" D x 3" H)
- 71 3/4" - WOODER CORP. BAND STORAGE (R. 27" W x 3" D x 3" H)
- 72 3/4" - WOODER CORP. BAND STORAGE (R. 27" W x 3" D x 3" H)
- 73 3/4" - WOODER CORP. BAND STORAGE (R. 27" W x 3" D x 3" H)
- 74 3/4" - WOODER CORP. BAND STORAGE (R. 27" W x 3" D x 3" H)
- 75 3/4" - WOODER CORP. BAND STORAGE (R. 27" W x 3" D x 3" H)
- 76 3/4" - WOODER CORP. BAND STORAGE (R. 27" W x 3" D x 3" H)
- 77 3/4" - WOODER CORP. BAND STORAGE (R. 27" W x 3" D x 3" H)
- 78 3/4" - WOODER CORP. BAND STORAGE (R. 27" W x 3" D x 3" H)
- 79 3/4" - WOODER CORP. BAND STORAGE (R. 27" W x 3" D x 3" H)
- 80 3/4" - WOODER CORP. BAND STORAGE (R. 27" W x 3" D x 3" H)
- 81 3/4" - WOODER CORP. BAND STORAGE (R. 27" W x 3" D x 3" H)
- 82 3/4" - WOODER CORP. BAND STORAGE (R. 27" W x 3" D x 3" H)
- 83 3/4" - WOODER CORP. BAND STORAGE (R. 27" W x 3" D x 3" H)
- 84 3/4" - WOODER CORP. BAND STORAGE (R. 27" W x 3" D x 3" H)
- 85 3/4" - WOODER CORP. BAND STORAGE (R. 27" W x 3" D x 3" H)
- 86 3/4" - WOODER CORP. BAND STORAGE (R. 27" W x 3" D x 3" H)
- 87 3/4" - WOODER CORP. BAND STORAGE (R. 27" W x 3" D x 3" H)
- 88 3/4" - WOODER CORP. BAND STORAGE (R. 27" W x 3" D x 3" H)
- 89 3/4" - WOODER CORP. BAND STORAGE (R. 27" W x 3" D x 3" H)
- 90 3/4" - WOODER CORP. BAND STORAGE (R. 27" W x 3" D x 3" H)
- 91 3/4" - WOODER CORP. BAND STORAGE (R. 27" W x 3" D x 3" H)
- 92 3/4" - WOODER CORP. BAND STORAGE (R. 27" W x 3" D x 3" H)
- 93 3/4" - WOODER CORP. BAND STORAGE (R. 27" W x 3" D x 3" H)
- 94 3/4" - WOODER CORP. BAND STORAGE (R. 27" W x 3" D x 3" H)
- 95 3/4" - WOODER CORP. BAND STORAGE (R. 27" W x 3" D x 3" H)
- 96 3/4" - WOODER CORP. BAND STORAGE (R. 27" W x 3" D x 3" H)
- 97 3/4" - WOODER CORP. BAND STORAGE (R. 27" W x 3" D x 3" H)
- 98 3/4" - WOODER CORP. BAND STORAGE (R. 27" W x 3" D x 3" H)
- 99 3/4" - WOODER CORP. BAND STORAGE (R. 27" W x 3" D x 3" H)
- 100 3/4" - WOODER CORP. BAND STORAGE (R. 27" W x 3" D x 3" H)

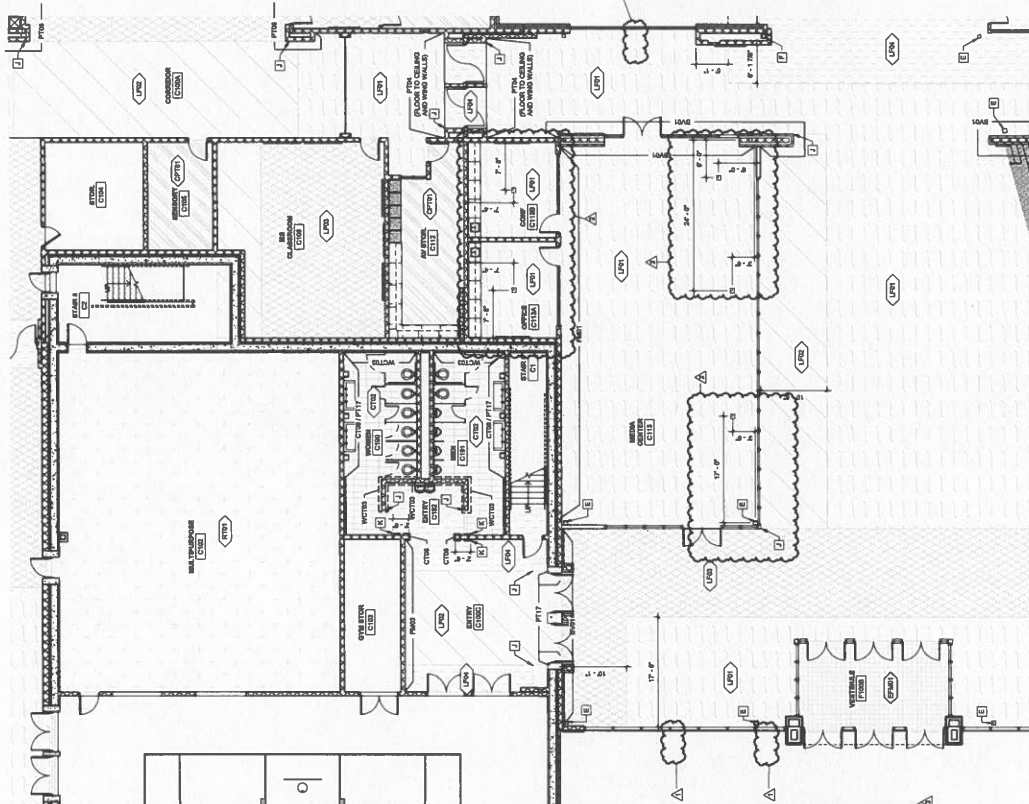


Author/Checker:	
Designer:	
Planner:	
Estimator:	
Materials:	
Quantity:	
Scale:	
Sheet Title:	

INTERIOR ELEVATIONS
 Architects Project No: 2106-204
 Date: 5/30/20
 Drawing No: A11.9

- GENERAL INTERIOR FINISH NOTES**
1. ALL VERTICAL SURFACES TO BE FINISHED PER FINISH SCHEDULE.
 2. ALL EXPOSED DRY CEILING AREAS SHALL BE FINISHED WITH 2' X 4' AC声 PANELS UNLESS OTHERWISE NOTED. ALL EXPOSED DRY WALL TO BE FINISHED PER FINISH SCHEDULE UNLESS OTHERWISE NOTED.
 3. ALL EXPOSED DRY WALLS TO BE FINISHED PER FINISH SCHEDULE UNLESS OTHERWISE NOTED.
 4. ALL EXPOSED DRY WALLS TO BE FINISHED PER FINISH SCHEDULE UNLESS OTHERWISE NOTED.
 5. ALL EXPOSED DRY WALLS TO BE FINISHED PER FINISH SCHEDULE UNLESS OTHERWISE NOTED.
 6. ALL EXPOSED DRY WALLS TO BE FINISHED PER FINISH SCHEDULE UNLESS OTHERWISE NOTED.
 7. ALL EXPOSED DRY WALLS TO BE FINISHED PER FINISH SCHEDULE UNLESS OTHERWISE NOTED.
 8. ALL EXPOSED DRY WALLS TO BE FINISHED PER FINISH SCHEDULE UNLESS OTHERWISE NOTED.
 9. ALL EXPOSED DRY WALLS TO BE FINISHED PER FINISH SCHEDULE UNLESS OTHERWISE NOTED.
 10. ALL EXPOSED DRY WALLS TO BE FINISHED PER FINISH SCHEDULE UNLESS OTHERWISE NOTED.
 11. ALL EXPOSED DRY WALLS TO BE FINISHED PER FINISH SCHEDULE UNLESS OTHERWISE NOTED.
 12. ALL EXPOSED DRY WALLS TO BE FINISHED PER FINISH SCHEDULE UNLESS OTHERWISE NOTED.
 13. ALL EXPOSED DRY WALLS TO BE FINISHED PER FINISH SCHEDULE UNLESS OTHERWISE NOTED.
 14. ALL EXPOSED DRY WALLS TO BE FINISHED PER FINISH SCHEDULE UNLESS OTHERWISE NOTED.
 15. ALL EXPOSED DRY WALLS TO BE FINISHED PER FINISH SCHEDULE UNLESS OTHERWISE NOTED.
 16. ALL EXPOSED DRY WALLS TO BE FINISHED PER FINISH SCHEDULE UNLESS OTHERWISE NOTED.
 17. ALL EXPOSED DRY WALLS TO BE FINISHED PER FINISH SCHEDULE UNLESS OTHERWISE NOTED.
 18. ALL EXPOSED DRY WALLS TO BE FINISHED PER FINISH SCHEDULE UNLESS OTHERWISE NOTED.
 19. ALL EXPOSED DRY WALLS TO BE FINISHED PER FINISH SCHEDULE UNLESS OTHERWISE NOTED.
 20. ALL EXPOSED DRY WALLS TO BE FINISHED PER FINISH SCHEDULE UNLESS OTHERWISE NOTED.

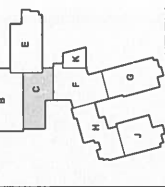
- FINISH PLAN REFERENCE NOTES**
1. ROOM TO HAVE 6" TILE BASE UNLESS OTHERWISE NOTED.
 2. ROOM TO HAVE 6" FLOOR DRY RESINOUS BASE UNLESS OTHERWISE NOTED.
 3. ROOM TO HAVE 6" FLOOR DRY RESINOUS BASE UNLESS OTHERWISE NOTED.
 4. ROOM TO HAVE 6" FLOOR DRY RESINOUS BASE UNLESS OTHERWISE NOTED.
 5. ROOM TO HAVE 6" FLOOR DRY RESINOUS BASE UNLESS OTHERWISE NOTED.
 6. ROOM TO HAVE 6" FLOOR DRY RESINOUS BASE UNLESS OTHERWISE NOTED.
 7. ROOM TO HAVE 6" FLOOR DRY RESINOUS BASE UNLESS OTHERWISE NOTED.
 8. ROOM TO HAVE 6" FLOOR DRY RESINOUS BASE UNLESS OTHERWISE NOTED.
 9. ROOM TO HAVE 6" FLOOR DRY RESINOUS BASE UNLESS OTHERWISE NOTED.
 10. ROOM TO HAVE 6" FLOOR DRY RESINOUS BASE UNLESS OTHERWISE NOTED.
 11. ROOM TO HAVE 6" FLOOR DRY RESINOUS BASE UNLESS OTHERWISE NOTED.
 12. ROOM TO HAVE 6" FLOOR DRY RESINOUS BASE UNLESS OTHERWISE NOTED.
 13. ROOM TO HAVE 6" FLOOR DRY RESINOUS BASE UNLESS OTHERWISE NOTED.
 14. ROOM TO HAVE 6" FLOOR DRY RESINOUS BASE UNLESS OTHERWISE NOTED.
 15. ROOM TO HAVE 6" FLOOR DRY RESINOUS BASE UNLESS OTHERWISE NOTED.
 16. ROOM TO HAVE 6" FLOOR DRY RESINOUS BASE UNLESS OTHERWISE NOTED.
 17. ROOM TO HAVE 6" FLOOR DRY RESINOUS BASE UNLESS OTHERWISE NOTED.
 18. ROOM TO HAVE 6" FLOOR DRY RESINOUS BASE UNLESS OTHERWISE NOTED.
 19. ROOM TO HAVE 6" FLOOR DRY RESINOUS BASE UNLESS OTHERWISE NOTED.
 20. ROOM TO HAVE 6" FLOOR DRY RESINOUS BASE UNLESS OTHERWISE NOTED.



ROOM FINISH SCHEDULE - AREA C

Room Number	Room Name	Floor Finish	Wall A	Wall B	Wall C	Wall D	Wall E	Wall F	Wall G	Wall H	Wall I	Wall J	Wall K	Wall L	Wall M	Wall N	Wall O	Wall P	Wall Q	Wall R	Wall S	Wall T	Wall U	Wall V	Wall W	Wall X	Wall Y	Wall Z	Notes	
01	STAIR A	SPR	SPR	SPR	SPR	SPR	SPR	SPR	SPR	SPR	SPR	SPR	SPR	SPR	SPR	SPR	SPR	SPR	SPR	SPR	SPR	SPR	SPR	SPR	SPR	SPR	SPR	SPR	SPR	
02	STAIR B	SPR	SPR	SPR	SPR	SPR	SPR	SPR	SPR	SPR	SPR	SPR	SPR	SPR	SPR	SPR	SPR	SPR	SPR	SPR	SPR	SPR	SPR	SPR	SPR	SPR	SPR	SPR	SPR	
03	CLASSROOM	SPR	SPR	SPR	SPR	SPR	SPR	SPR	SPR	SPR	SPR	SPR	SPR	SPR	SPR	SPR	SPR	SPR	SPR	SPR	SPR	SPR	SPR	SPR	SPR	SPR	SPR	SPR	SPR	
04	CLASSROOM	SPR	SPR	SPR	SPR	SPR	SPR	SPR	SPR	SPR	SPR	SPR	SPR	SPR	SPR	SPR	SPR	SPR	SPR	SPR	SPR	SPR	SPR	SPR	SPR	SPR	SPR	SPR	SPR	
05	OFFICE	SPR	SPR	SPR	SPR	SPR	SPR	SPR	SPR	SPR	SPR	SPR	SPR	SPR	SPR	SPR	SPR	SPR	SPR	SPR	SPR	SPR	SPR	SPR	SPR	SPR	SPR	SPR	SPR	
06	OFFICE	SPR	SPR	SPR	SPR	SPR	SPR	SPR	SPR	SPR	SPR	SPR	SPR	SPR	SPR	SPR	SPR	SPR	SPR	SPR	SPR	SPR	SPR	SPR	SPR	SPR	SPR	SPR	SPR	
07	OFFICE	SPR	SPR	SPR	SPR	SPR	SPR	SPR	SPR	SPR	SPR	SPR	SPR	SPR	SPR	SPR	SPR	SPR	SPR	SPR	SPR	SPR	SPR	SPR	SPR	SPR	SPR	SPR	SPR	
08	OFFICE	SPR	SPR	SPR	SPR	SPR	SPR	SPR	SPR	SPR	SPR	SPR	SPR	SPR	SPR	SPR	SPR	SPR	SPR	SPR	SPR	SPR	SPR	SPR	SPR	SPR	SPR	SPR	SPR	
09	OFFICE	SPR	SPR	SPR	SPR	SPR	SPR	SPR	SPR	SPR	SPR	SPR	SPR	SPR	SPR	SPR	SPR	SPR	SPR	SPR	SPR	SPR	SPR	SPR	SPR	SPR	SPR	SPR	SPR	
10	OFFICE	SPR	SPR	SPR	SPR	SPR	SPR	SPR	SPR	SPR	SPR	SPR	SPR	SPR	SPR	SPR	SPR	SPR	SPR	SPR	SPR	SPR	SPR	SPR	SPR	SPR	SPR	SPR	SPR	
11	OFFICE	SPR	SPR	SPR	SPR	SPR	SPR	SPR	SPR	SPR	SPR	SPR	SPR	SPR	SPR	SPR	SPR	SPR	SPR	SPR	SPR	SPR	SPR	SPR	SPR	SPR	SPR	SPR	SPR	
12	OFFICE	SPR	SPR	SPR	SPR	SPR	SPR	SPR	SPR	SPR	SPR	SPR	SPR	SPR	SPR	SPR	SPR	SPR	SPR	SPR	SPR	SPR	SPR	SPR	SPR	SPR	SPR	SPR	SPR	
13	OFFICE	SPR	SPR	SPR	SPR	SPR	SPR	SPR	SPR	SPR	SPR	SPR	SPR	SPR	SPR	SPR	SPR	SPR	SPR	SPR	SPR	SPR	SPR	SPR	SPR	SPR	SPR	SPR	SPR	
14	OFFICE	SPR	SPR	SPR	SPR	SPR	SPR	SPR	SPR	SPR	SPR	SPR	SPR	SPR	SPR	SPR	SPR	SPR	SPR	SPR	SPR	SPR	SPR	SPR	SPR	SPR	SPR	SPR	SPR	
15	OFFICE	SPR	SPR	SPR	SPR	SPR	SPR	SPR	SPR	SPR	SPR	SPR	SPR	SPR	SPR	SPR	SPR	SPR	SPR	SPR	SPR	SPR	SPR	SPR	SPR	SPR	SPR	SPR	SPR	
16	OFFICE	SPR	SPR	SPR	SPR	SPR	SPR	SPR	SPR	SPR	SPR	SPR	SPR	SPR	SPR	SPR	SPR	SPR	SPR	SPR	SPR	SPR	SPR	SPR	SPR	SPR	SPR	SPR	SPR	
17	OFFICE	SPR	SPR	SPR	SPR	SPR	SPR	SPR	SPR	SPR	SPR	SPR	SPR	SPR	SPR	SPR	SPR	SPR	SPR	SPR	SPR	SPR	SPR	SPR	SPR	SPR	SPR	SPR	SPR	
18	OFFICE	SPR	SPR	SPR	SPR	SPR	SPR	SPR	SPR	SPR	SPR	SPR	SPR	SPR	SPR	SPR	SPR	SPR	SPR	SPR	SPR	SPR	SPR	SPR	SPR	SPR	SPR	SPR	SPR	
19	OFFICE	SPR	SPR	SPR	SPR	SPR	SPR	SPR	SPR	SPR	SPR	SPR	SPR	SPR	SPR	SPR	SPR	SPR	SPR	SPR	SPR	SPR	SPR	SPR	SPR	SPR	SPR	SPR	SPR	
20	OFFICE	SPR	SPR	SPR	SPR	SPR	SPR	SPR	SPR	SPR	SPR	SPR	SPR	SPR	SPR	SPR	SPR	SPR	SPR	SPR	SPR	SPR	SPR	SPR	SPR	SPR	SPR	SPR	SPR	

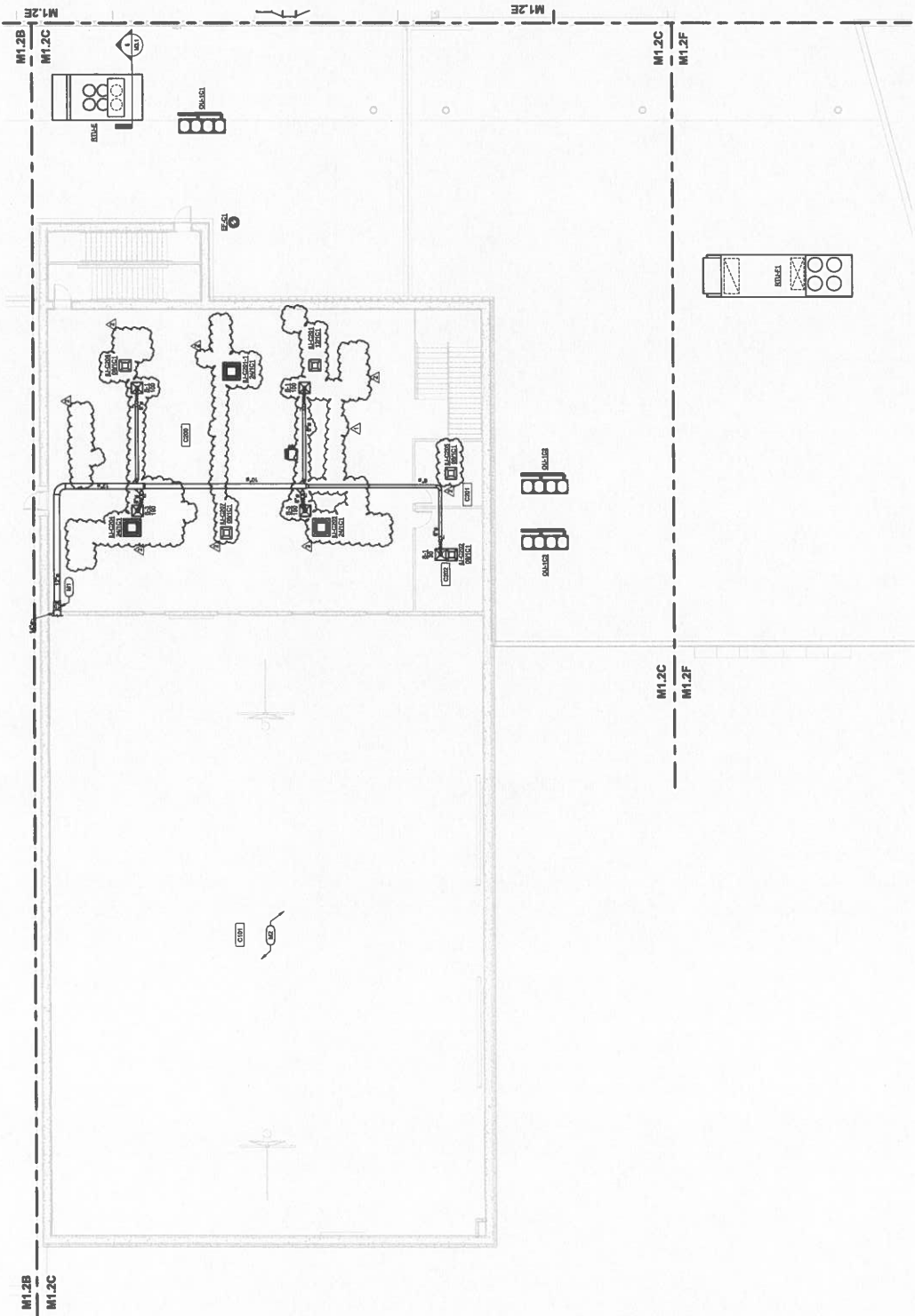
- ROOM FINISH SCHEDULE**
- COMMENTS:**
1. ROOM TO HAVE 6" TILE BASE UNLESS OTHERWISE NOTED.
 2. ROOM TO HAVE 6" FLOOR DRY RESINOUS BASE UNLESS OTHERWISE NOTED.
 3. ROOM TO HAVE 6" FLOOR DRY RESINOUS BASE UNLESS OTHERWISE NOTED.
 4. ROOM TO HAVE 6" FLOOR DRY RESINOUS BASE UNLESS OTHERWISE NOTED.
 5. ROOM TO HAVE 6" FLOOR DRY RESINOUS BASE UNLESS OTHERWISE NOTED.
 6. ROOM TO HAVE 6" FLOOR DRY RESINOUS BASE UNLESS OTHERWISE NOTED.
 7. ROOM TO HAVE 6" FLOOR DRY RESINOUS BASE UNLESS OTHERWISE NOTED.
 8. ROOM TO HAVE 6" FLOOR DRY RESINOUS BASE UNLESS OTHERWISE NOTED.
 9. ROOM TO HAVE 6" FLOOR DRY RESINOUS BASE UNLESS OTHERWISE NOTED.
 10. ROOM TO HAVE 6" FLOOR DRY RESINOUS BASE UNLESS OTHERWISE NOTED.
 11. ROOM TO HAVE 6" FLOOR DRY RESINOUS BASE UNLESS OTHERWISE NOTED.
 12. ROOM TO HAVE 6" FLOOR DRY RESINOUS BASE UNLESS OTHERWISE NOTED.
 13. ROOM TO HAVE 6" FLOOR DRY RESINOUS BASE UNLESS OTHERWISE NOTED.
 14. ROOM TO HAVE 6" FLOOR DRY RESINOUS BASE UNLESS OTHERWISE NOTED.
 15. ROOM TO HAVE 6" FLOOR DRY RESINOUS BASE UNLESS OTHERWISE NOTED.
 16. ROOM TO HAVE 6" FLOOR DRY RESINOUS BASE UNLESS OTHERWISE NOTED.
 17. ROOM TO HAVE 6" FLOOR DRY RESINOUS BASE UNLESS OTHERWISE NOTED.
 18. ROOM TO HAVE 6" FLOOR DRY RESINOUS BASE UNLESS OTHERWISE NOTED.
 19. ROOM TO HAVE 6" FLOOR DRY RESINOUS BASE UNLESS OTHERWISE NOTED.
 20. ROOM TO HAVE 6" FLOOR DRY RESINOUS BASE UNLESS OTHERWISE NOTED.



Rev.	Date	Description
1		Initial Issue
2		Revised
3		Revised
4		Revised
5		Revised
6		Revised
7		Revised
8		Revised
9		Revised
10		Revised

Project Title: SECOND FLOOR HVAC PLAN - AREA C
 Architect's Project No.: 2106-204
 Date: May, 20
 Drawing No.: M1.2C

PLAN NOTES:
 (1) FOR BIDDING PURPOSES ONLY, SEE SHEET M1.1C FOR CONTINGENTIAL TYPED SUPPLY FACT SYMBOLS.
 (2) REFER TO SHEET M1.1C FOR WORK IN THIS AREA.



SECOND FLOOR HVAC PLAN - AREA C
 1/8" = 1'-0"

PLAN NOTES:
 (1) UP CORRIDOR DOWN
 (2) UP CORRIDOR LEFTS DOWN

HOPKINSVILLE - CHRISTIAN
 COUNTY ACADEMY



CHRISTIAN COUNTY
 PUBLIC SCHOOLS

ROE # : BG 22-104

1145 E. CAMMELL BLVD
 HOPKINSVILLE, KY 42404

HAFFER
 1111 Poplar Avenue
 Suite 200
 Hopkinsville, KY 42404
 Telephone: 774-231-1111
 Fax: 774-231-1111

ALLIANCE
 118 E. Campbell
 Suite 200
 Hopkinsville, KY 42404
 Telephone: 774-231-1111

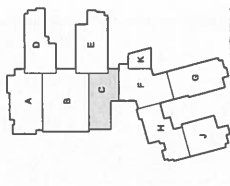
bell
 107 Poplar Drive
 Hopkinsville, KY 42404
 Telephone: 774-231-1111

K+S Engineering, PLLC
 124 National Drive
 Hopkinsville, KY 42404
 Telephone: 774-231-1111

WBW
 1000 Campbell Ave
 Hopkinsville, KY 42404
 Telephone: 774-231-1111

GT
 1000 Campbell Ave
 Hopkinsville, KY 42404
 Telephone: 774-231-1111

KEYPLA
 1000 Campbell Ave
 Hopkinsville, KY 42404
 Telephone: 774-231-1111

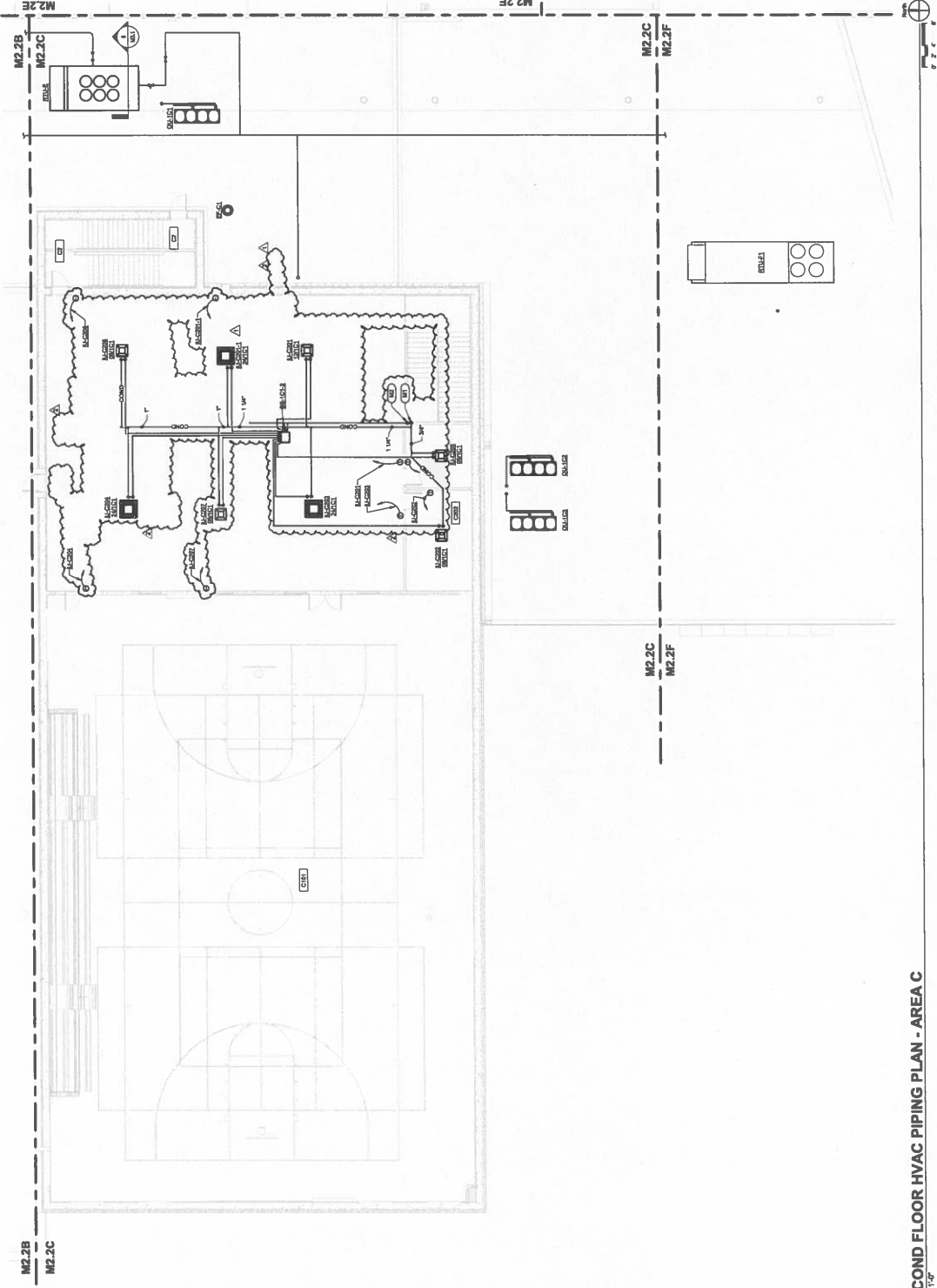


REV	DATE	DESCRIPTION
1		
2		
3		
4		
5		
6		
7		
8		
9		
10		

Designed By: James R. Key
 Checked By:
 Date: May, 20
 Project No: 2108-204
 Drawing No: M2.2C

Architect's Project No: 2108-204
 Date: May, 20
 Drawing No: M2.2C

SECOND FLOOR HVAC
 PIPING PLAN - AREA C



SECOND FLOOR HVAC PIPING PLAN - AREA C
 10'-0" x 14'-0"

KOE #: 60 22-104
RHS FT. CARROLL BLDG
HOPKINSVILLE, KY 42240
HAFER
118 E. Chestnut Street
Hopkinsville, KY 42240
Telephone: 774-8111

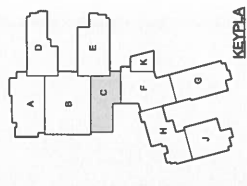
ALLIANCE
118 E. Chestnut Street
Hopkinsville, KY 42240
Telephone: 774-8111

bellsouth
127 Peach Drive
Hopkinsville, KY 42240
Telephone: 774-6142

K&S Engineering, PLLC
201 Walnut Street
Hopkinsville, KY 42240
Telephone: 774-6142

WBW ARCHITECTS
200 South Street
Hopkinsville, KY 42240
Telephone: 774-6142

GT
118 E. Chestnut Street
Hopkinsville, KY 42240
Telephone: 774-8111



NO.	REVISION	DATE
1	ISSUED FOR PERMIT	11/11/14
2	ISSUED FOR PERMIT	11/11/14
3	ISSUED FOR PERMIT	11/11/14

Designed By: _____
Checked By: _____

Sheet:
**SYSTEMS & TECHNOLOGY
PLAN - FIRST FLOOR - AREA 'C'**

Architects Project No.: 2106-204
Date: May, 20
Drawing No.: E3.1C

NOTES (FIRST FLOOR SYS. & TECH. PLAN - AREA 'C'):

GENERAL NOTES (FOR ALL SYSTEMS & TECH. PLANS):
1. THE CONTRACTOR SHALL BE RESPONSIBLE FOR OBTAINING ALL NECESSARY PERMITS AND APPROVALS FROM ALL APPLICABLE AGENCIES AND AUTHORITIES.
2. THE CONTRACTOR SHALL BE RESPONSIBLE FOR OBTAINING ALL NECESSARY PERMITS AND APPROVALS FROM ALL APPLICABLE AGENCIES AND AUTHORITIES.
3. THE CONTRACTOR SHALL BE RESPONSIBLE FOR OBTAINING ALL NECESSARY PERMITS AND APPROVALS FROM ALL APPLICABLE AGENCIES AND AUTHORITIES.

NOTES (FIRST FLOOR SYS. & TECH. PLAN - AREA 'C'):

1. PROVIDE DATA OUTLET FOR NETWORK CONNECTION TO EACH ROOM.
2. PROVIDE DATA OUTLET FOR NETWORK CONNECTION TO EACH ROOM.
3. PROVIDE DATA OUTLET FOR NETWORK CONNECTION TO EACH ROOM.

NOTES (FIRST FLOOR SYS. & TECH. PLAN - AREA 'C'):

1. PROVIDE DATA OUTLET FOR NETWORK CONNECTION TO EACH ROOM.
2. PROVIDE DATA OUTLET FOR NETWORK CONNECTION TO EACH ROOM.
3. PROVIDE DATA OUTLET FOR NETWORK CONNECTION TO EACH ROOM.

1. PROVIDE DATA OUTLET FOR NETWORK CONNECTION TO EACH ROOM.
2. PROVIDE DATA OUTLET FOR NETWORK CONNECTION TO EACH ROOM.
3. PROVIDE DATA OUTLET FOR NETWORK CONNECTION TO EACH ROOM.

NOTES (FIRST FLOOR SYS. & TECH. PLAN - AREA 'C'):

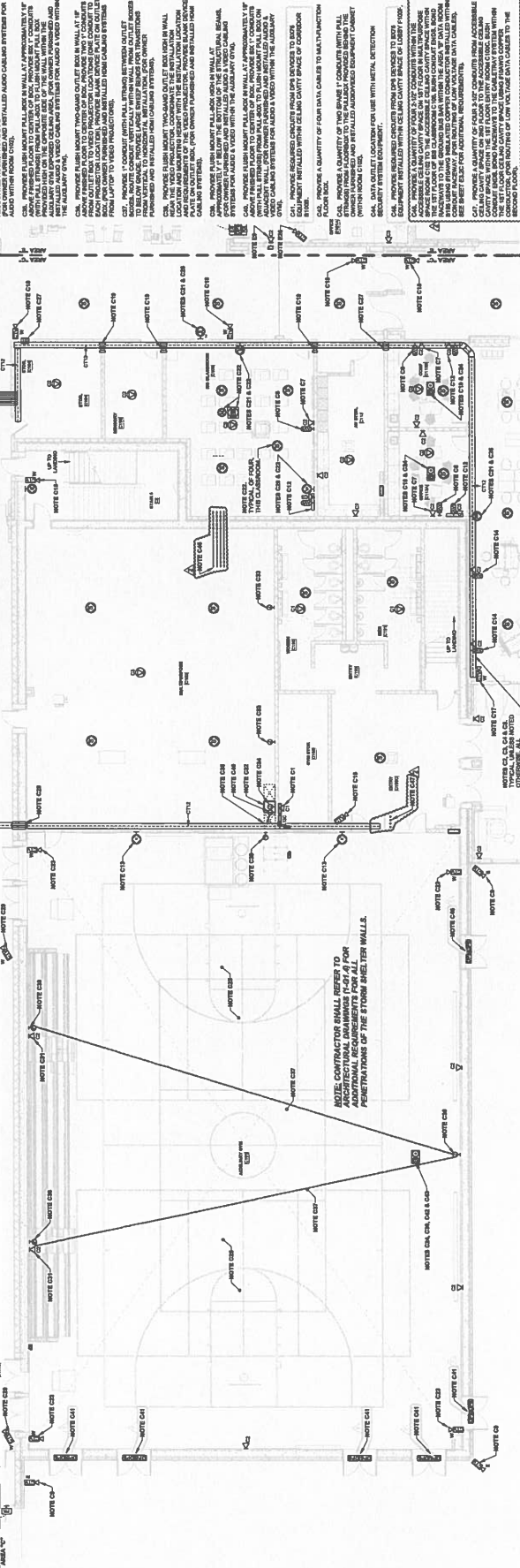
1. PROVIDE DATA OUTLET FOR NETWORK CONNECTION TO EACH ROOM.
2. PROVIDE DATA OUTLET FOR NETWORK CONNECTION TO EACH ROOM.
3. PROVIDE DATA OUTLET FOR NETWORK CONNECTION TO EACH ROOM.

1. PROVIDE DATA OUTLET FOR NETWORK CONNECTION TO EACH ROOM.
2. PROVIDE DATA OUTLET FOR NETWORK CONNECTION TO EACH ROOM.
3. PROVIDE DATA OUTLET FOR NETWORK CONNECTION TO EACH ROOM.

NOTES (FIRST FLOOR SYS. & TECH. PLAN - AREA 'C'):

1. PROVIDE DATA OUTLET FOR NETWORK CONNECTION TO EACH ROOM.
2. PROVIDE DATA OUTLET FOR NETWORK CONNECTION TO EACH ROOM.
3. PROVIDE DATA OUTLET FOR NETWORK CONNECTION TO EACH ROOM.

1. PROVIDE DATA OUTLET FOR NETWORK CONNECTION TO EACH ROOM.
2. PROVIDE DATA OUTLET FOR NETWORK CONNECTION TO EACH ROOM.
3. PROVIDE DATA OUTLET FOR NETWORK CONNECTION TO EACH ROOM.



NOTES (FIRST FLOOR SYS. & TECH. PLAN - AREA 'C'):

1. PROVIDE DATA OUTLET FOR NETWORK CONNECTION TO EACH ROOM.
2. PROVIDE DATA OUTLET FOR NETWORK CONNECTION TO EACH ROOM.
3. PROVIDE DATA OUTLET FOR NETWORK CONNECTION TO EACH ROOM.

1. PROVIDE DATA OUTLET FOR NETWORK CONNECTION TO EACH ROOM.
2. PROVIDE DATA OUTLET FOR NETWORK CONNECTION TO EACH ROOM.
3. PROVIDE DATA OUTLET FOR NETWORK CONNECTION TO EACH ROOM.

NOTES (FIRST FLOOR SYS. & TECH. PLAN - AREA 'C'):

1. PROVIDE DATA OUTLET FOR NETWORK CONNECTION TO EACH ROOM.
2. PROVIDE DATA OUTLET FOR NETWORK CONNECTION TO EACH ROOM.
3. PROVIDE DATA OUTLET FOR NETWORK CONNECTION TO EACH ROOM.

1. PROVIDE DATA OUTLET FOR NETWORK CONNECTION TO EACH ROOM.
2. PROVIDE DATA OUTLET FOR NETWORK CONNECTION TO EACH ROOM.
3. PROVIDE DATA OUTLET FOR NETWORK CONNECTION TO EACH ROOM.

NOTES (FIRST FLOOR SYS. & TECH. PLAN - AREA 'C'):

1. PROVIDE DATA OUTLET FOR NETWORK CONNECTION TO EACH ROOM.
2. PROVIDE DATA OUTLET FOR NETWORK CONNECTION TO EACH ROOM.
3. PROVIDE DATA OUTLET FOR NETWORK CONNECTION TO EACH ROOM.

1. PROVIDE DATA OUTLET FOR NETWORK CONNECTION TO EACH ROOM.
2. PROVIDE DATA OUTLET FOR NETWORK CONNECTION TO EACH ROOM.
3. PROVIDE DATA OUTLET FOR NETWORK CONNECTION TO EACH ROOM.

NOTES (FIRST FLOOR SYS. & TECH. PLAN - AREA 'C'):

1. PROVIDE DATA OUTLET FOR NETWORK CONNECTION TO EACH ROOM.
2. PROVIDE DATA OUTLET FOR NETWORK CONNECTION TO EACH ROOM.
3. PROVIDE DATA OUTLET FOR NETWORK CONNECTION TO EACH ROOM.

1. PROVIDE DATA OUTLET FOR NETWORK CONNECTION TO EACH ROOM.
2. PROVIDE DATA OUTLET FOR NETWORK CONNECTION TO EACH ROOM.
3. PROVIDE DATA OUTLET FOR NETWORK CONNECTION TO EACH ROOM.

NOTES (FIRST FLOOR SYS. & TECH. PLAN - AREA 'C'):

1. PROVIDE DATA OUTLET FOR NETWORK CONNECTION TO EACH ROOM.
2. PROVIDE DATA OUTLET FOR NETWORK CONNECTION TO EACH ROOM.
3. PROVIDE DATA OUTLET FOR NETWORK CONNECTION TO EACH ROOM.

1. PROVIDE DATA OUTLET FOR NETWORK CONNECTION TO EACH ROOM.
2. PROVIDE DATA OUTLET FOR NETWORK CONNECTION TO EACH ROOM.
3. PROVIDE DATA OUTLET FOR NETWORK CONNECTION TO EACH ROOM.

NOTES (FIRST FLOOR SYS. & TECH. PLAN - AREA 'C'):

1. PROVIDE DATA OUTLET FOR NETWORK CONNECTION TO EACH ROOM.
2. PROVIDE DATA OUTLET FOR NETWORK CONNECTION TO EACH ROOM.
3. PROVIDE DATA OUTLET FOR NETWORK CONNECTION TO EACH ROOM.

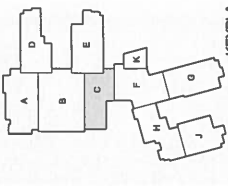
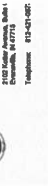
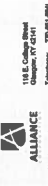
1. PROVIDE DATA OUTLET FOR NETWORK CONNECTION TO EACH ROOM.
2. PROVIDE DATA OUTLET FOR NETWORK CONNECTION TO EACH ROOM.
3. PROVIDE DATA OUTLET FOR NETWORK CONNECTION TO EACH ROOM.

NOTES (FIRST FLOOR SYS. & TECH. PLAN - AREA 'C'):

1. PROVIDE DATA OUTLET FOR NETWORK CONNECTION TO EACH ROOM.
2. PROVIDE DATA OUTLET FOR NETWORK CONNECTION TO EACH ROOM.
3. PROVIDE DATA OUTLET FOR NETWORK CONNECTION TO EACH ROOM.

1. PROVIDE DATA OUTLET FOR NETWORK CONNECTION TO EACH ROOM.
2. PROVIDE DATA OUTLET FOR NETWORK CONNECTION TO EACH ROOM.
3. PROVIDE DATA OUTLET FOR NETWORK CONNECTION TO EACH ROOM.





Design By:	Drawn By:	Checked By:

Architect's Project No: 2106-204
Date: May, 20
Drawing No: E4.2C

GENERAL NOTES (LIGHTING PLAN - SECOND FLOOR - AREA "C")

NOTES (LIGHTING PLAN - SECOND FLOOR - AREA "C")

GENERAL NOTES (LIGHTING PLAN - SECOND FLOOR - AREA "C")

NOTES (LIGHTING PLAN - SECOND FLOOR - AREA "C")

NOTES (LIGHTING PLAN - SECOND FLOOR - AREA "C")

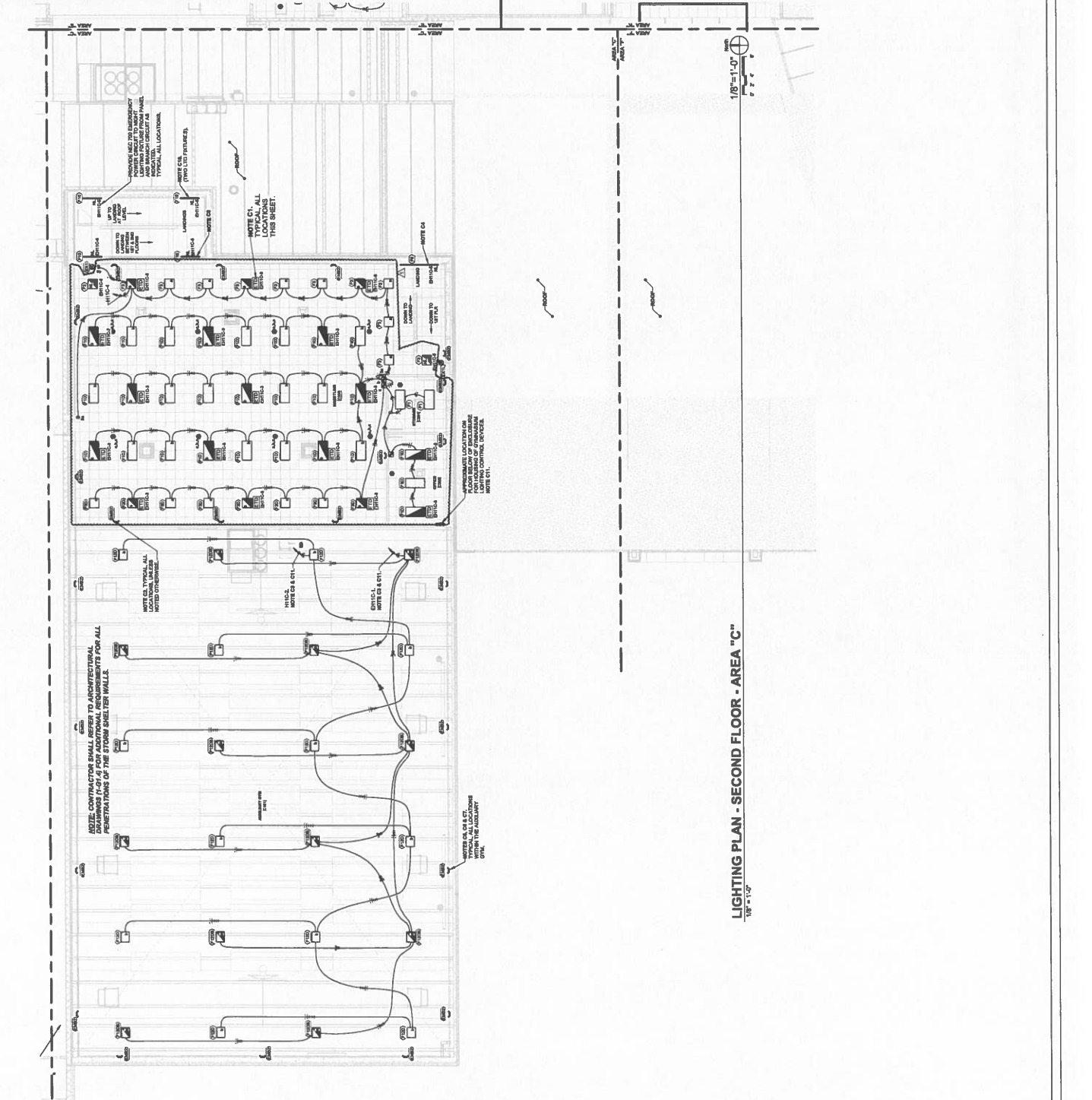
NOTES (LIGHTING PLAN - SECOND FLOOR - AREA "C")

NOTES (LIGHTING PLAN - SECOND FLOOR - AREA "C")

NOTES (LIGHTING PLAN - SECOND FLOOR - AREA "C")

NOTES (LIGHTING PLAN - SECOND FLOOR - AREA "C")

NOTES (LIGHTING PLAN - SECOND FLOOR - AREA "C")



LIGHTING PLAN - SECOND FLOOR - AREA "C" 1/8" = 1'-0"



A&A Contracting LLC

380 Bowers Rd
Rochester KY 42273

Change Order Request

Order#: PR 020 area C 2nd FI

Order Date: 06/27/2024

GC Job #: 22-033

To: Alliance Corporation
116 East College Street
Glasgow KY 42142

Project: 23196
Hopkinsville-Christian County Academy BPC
200 Glass Ave.
Hopkinsville KY 42240

The contractor agrees to perform and the owner agrees to pay for the following changes to this contract.

Plans Attached

Ordered By: 11 Andy Smith

Customer Order:

Specifications Attached

Description of Work	Amount
Material	868.00
Labor	285.00
Equipment	
Markup 15%	172.00
Insurance & Bond 2%	26.00

Notes

PR 020 Rea C 2nd Floor Redesign

Delete ROTC Suite buildout as originally shown in the bid documents. Provide a large wrestling room, office and storage room as shown.

Due to the deletion of the MS/DW soffit;
Add 250 SF ACT #1- grid & tile.

Due to the deletion of internal walls.
Delete 360 LF of wall mold.

Negative changes will lower the overall contract price requiring no additional payment by owner.

Requested Amount of Change

1,351.00

The original Contract Sum was	1,046,208.00
Net change by previous Change Orders	0.00
The Contract Sum prior to this Change Order	1,046,208.00
The Contract Sum will be changed by this Change Order	1,351.00
The new Contract Sum including this Change Order will be	1,047,559.00
The Contract Time will be changed by	0 Days

Owner: _____ Date: _____

Contractor: _____ Date: _____

FACPAC Contract Change Order Supplemental Information Form (Ref# 60982)

Form Status: Saved

Tier 1 Project: Consolidated High School

BG Number: 22-104

Status: Active

District: Christian County (HB678) (115)

Phase: Project Initiation (View Checklist)

Contract: A & A Contracting LLC, 0095, Acoustical Panel Ceilings

Type: CM Bid Package

Proposed

Change Order Number	2
Time Extension Required	No
Date Of Change Order	10/14/2024
Change Order Amount To Date	Increase

Construction Contingency

Calculations below are project wide. Remaining negative Construction Contingency may require the submission of a revised BGI.

Current Approved Amount	\$6,320,436.60
Net Approved COs	\$365,699.78
Remaining After Approved COs	\$5,954,736.82
Net All COs	\$392,266.09
Remaining After All COs	\$5,928,170.51

This Requested Change Order Amount \$1,351.00

+/-

Change In A/E Fee This Change Order

+/-

Change In CM Fee This Change Order \$0.00

+/-

Remaining Construction Contingency \$5,928,170.51

Balance

Contract Change Requested By Local Board of Education

Contract Change Reason Code Expansion of Scope

Change Order Description And Justification

Additional ceiling scope per PR #20, area C 2nd floor redesign.

Cost Benefit To Owner

The cost of this change order has been reviewed and determined to be reasonable.

Contract unit prices have been utilized No
to support the cost associated with this
change order.

Detailed Cost Breakdown

Contract unit prices have not been utilized, provide a detailed cost breakdown which separates labor, material, profit and overhead.

Detail Item	Amount	Percent of Total
Labor	\$285.00	21.10%
Materials	\$868.00	64.25%
Profit and Overhead	\$172.00	12.73%
Bond Insurance	\$26.00	1.92%
Cost Breakdown Total:	\$1,351.00	

Cost for this Change Order supported by an alternate bid or competitive price quote

Explain Why

Executed contract with contractor.

Change Order Supplemental Information Form Signature Page (Online Form Ref# 60982)

Architect

Date

Construction Manager

Date

Finance Officer

Date

Local Board of Education Designee

Date