

**DANNY CLEMENS, DIRECTOR**  
TRACY PARSLEY, MAINTENANCE SUPERVISOR  
THOMAS STOKES, CUSTODIAL SUPERVISOR  
GEORGE BROCK, ENERGY MANAGER

**DEPARTMENT OF FACILITIES**

**MEMO**

**TO:** Dr. Jesse Bacon, Superintendent  
**FROM:** Danny Clemens, Director of Facilities  
**Date:** August 19, 2024  
**RE:** BEHS FA - Change Order 12 - Structural Revisions - Col Line N.6 **DC**

After demolition of the roof deck and ceilings in the cafeteria area of the former OMES, it was determined by the Construction and Design teams that steel revisions would be required to support the roof deck in the area. The existing roof joists had to be modified in the field to re-support the roof deck to maintain design intent.

**I recommend approval of this request.**

*Attached paperwork is listed below with action items noted for each:*

- AIA G701 - BEHS Fine Arts-CO #12 Structural Revisions - Col Line N.6 - for Board Signature
- CO 12 - FACPAC - Structural Revisions Col Line N6 - For Board Signature- For Board Signature
- BEHS-Fine Arts-COR #17-RFP-14-Structural Revisions at Column Line N.6 - No action – for Board Reference.

**OUR MISSION IS TO INSPIRE AND EQUIP OUR STUDENTS TO SUCCEED IN LIFE**

**BULLITT COUNTY PUBLIC SCHOOLS IS AN EQUAL EDUCATION AND EMPLOYMENT INSTITUTION**

*Wesley Marshall*



# AIA® Document G701® – 2017

## Change Order

**PROJECT:** *(Name and address)*  
Bullitt East High School Fine Arts  
Addition  
11450 KY-44, Mt Washington, KY 40047

**CONTRACT INFORMATION:**  
Contract For: General Construction  
Date: December 18, 2023

**CHANGE ORDER INFORMATION:**  
Change Order Number: 012  
Date: August 26, 2024

**OWNER:** *(Name and address)*  
Bullitt County Public Schools Board of  
Education  
1040 Hwy 44 East  
Shepherdsville, KY 40165

**ARCHITECT:** *(Name and address)*  
Studio Kremer Architects, Inc.  
1231 S. Shelby Street  
Louisville, KY 40203

**CONTRACTOR:** *(Name and address)*  
EH Construction, LLC  
1188 E Bluelick Road  
Shepherdsville, KY 40165

**THE CONTRACT IS CHANGED AS FOLLOWS:**

*(Insert a detailed description of the change and, if applicable, attach or reference specific exhibits. Also include agreed upon adjustments attributable to executed Construction Change Directives.)*

See COR#17 and RFP #14 for scope of Work included in this Change Order.

The original Contract Sum was	\$ 25,486,890.80
The net change by previously authorized Change Orders	\$ 2,322,389.03
The Contract Sum prior to this Change Order was	\$ 27,809,279.83
The Contract Sum will be increased by this Change Order in the amount of	\$ 5,101.88
The new Contract Sum including this Change Order will be	\$ 27,814,381.71

The Contract Time will be unchanged by Zero (0) days.

The new date of Substantial Completion will be

**NOTE:** This Change Order does not include adjustments to the Contract Sum or Guaranteed Maximum Price, or the Contract Time, that have been authorized by Construction Change Directive until the cost and time have been agreed upon by both the Owner and Contractor, in which case a Change Order is executed to supersede the Construction Change Directive.

**NOT VALID UNTIL SIGNED BY THE ARCHITECT, CONTRACTOR AND OWNER.**

Studio Kremer Architects, Inc

EH Construction, LLC

Bullitt County Public Schools Board of  
Education

\_\_\_\_\_  
**ARCHITECT** *(Firm name)*

\_\_\_\_\_  
**CONTRACTOR** *(Firm name)*

\_\_\_\_\_  
**OWNER** *(Firm name)*

*Catherine N. Ward*  
\_\_\_\_\_  
**SIGNATURE**

\_\_\_\_\_  
**SIGNATURE**

\_\_\_\_\_  
**SIGNATURE**

Catherine Noble Ward, AIA  
\_\_\_\_\_  
**PRINTED NAME AND TITLE**

Mike Rippy, Project Manager  
\_\_\_\_\_  
**PRINTED NAME AND TITLE**

Dr. Jesse Bacon, Superintendent  
\_\_\_\_\_  
**PRINTED NAME AND TITLE**

8-19-2024  
\_\_\_\_\_  
**DATE**

\_\_\_\_\_  
**DATE**

\_\_\_\_\_  
**DATE**

# FACPAC Contract Change Order Supplemental Information Form (Ref# 60554)

Form Status: Saved

Tier 1 Project: Bullitt East High School Renovation and Addition  
BG Number: 23-050 District: Bullitt County (HB678) (071)  
Status: Active Phase: Project Initiation (View Checklist)

Contract: EH Construction, LLC, 0001, General Construction  
Type: General Contractor Proposed

Change Order Number 12  
Time Extension Required No  
Date Of Change Order 8/26/2024  
Change Order Amount To Date Increase

## Construction Contingency

Calculations below are project wide. Remaining negative Construction Contingency may require the submission of a revised BG1.

Current Approved Amount	\$4,178,133.72
Net Approved COs	\$0.00
Remaining After Approved COs	\$4,178,133.72
Net All COs	\$2,327,490.91
Remaining After All COs	\$1,850,642.81

This Requested Change Order Amount \$5,101.88  
+/-  
Change In A/E Fee This Change Order \$318.87  
+/-

Change In CM Fee This Change Order \$0.00

+/-

Remaining Construction Contingency \$1,850,642.81

Balance

Contract Change Requested By Architect/Engineer; General Contractor

Contract Change Reason Code Found Condition

Change Order Description And Justification

After demolition of the roof deck and ceilings in the area cafeteria area of the former OMES, it was determined by the Construction and Design teams that steel revisions would be required to support the roof deck in the area. The existing roof joists had to be modified in the field to re-support the roof deck to maintain design intent.

Cost Benefit To Owner

Work can commence with trades already on site and avoid the added cost of mobilization and general conditions. Also, this credits work that was already included the current bid.

Contract unit prices have been utilized No  
to support the cost associated with this  
change order.

### Detailed Cost Breakdown

Contract unit prices have not been utilized, provide a detailed cost breakdown which separates labor, material, profit and overhead.

Detail Item	Amount	Percent of Total
Labor	\$1,920.00	37.63%
Materials	\$2,472.49	48.46%
Profit and Overhead	\$658.88	12.91%
Bond Insurance	\$50.51	0.99%
<b>Cost Breakdown Total:</b>	<b>\$5,101.88</b>	

Cost for this Change Order supported No  
by an alternate bid or competitive price  
quote

Explain Why

Work can commence with trades already on site and maintain the current Construction Schedule.

# Change Order Supplemental Information Form Signature Page (Online Form Ref# 60554)

*Catherine N. Ward*  
Architect

8-19-2024

Date

N/A

Construction Manager

Date

*Lisa Lewis*

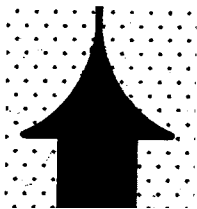
Finance Officer

8-20-2024

Date

Local Board of Education Designee

Date



# EH

---

## EH CONSTRUCTION, LLC

GENERAL CONTRACTORS • CONSTRUCTION MANAGERS

P.O. BOX 910

BROOKS, KY 40109

(502) 957-7471 • FAX (502) 957-3420

July 17, 2024

Studio Kremer Architects  
1231 Shelby Street  
Louisville, KY 40203

Re: BEHS-Fine Arts Addition/COR #17/RFP-14/Structral Revisions at Column Line N.6

<b>Sonne Steel</b>	<b>\$ 4,721.93</b>
<b>7.5% GC OH &amp; Profit</b>	<b>\$ 329.44</b>
<b>1% Payment &amp; Performance Bond</b>	<b>\$ 50.51</b>

**Total Requested Change Order: \$ 5,101.88**

Sincerely,

*Mike Rippy*  
Mike Rippy  
EH Construction, LLC



48 REGINA LANE, SMITHFIELD, KENTUCKY 40068  
 PH: 502-222-0099

7/15/24

Ref: Bullit East HS - Area B Priority Changes

Sonne Job# 23-0789

Sub: CO#04 - Area B N.6 Line Tie-In Changes

**Description:** Detailing, fabrication, and erection changes per RFP#14 recv'd on 7.1.24 for N.6 line tie-in between 20 and 21 line.

Remove existing beam, provide new beam, and rework existing joists that were on existing beam

Item Type	Item Description	Cost
Detailing	Detailing and fab packets	\$ 606.00
Fabrication/Delivery	W8x24 + bearing plate (no detail) decking bridging plate w/ tek screws Deck angle support angles w/ bolts Joist reinforcement and seats at two joists	\$ 1,866.49
Erection	Field labor to perform work	\$ 1,920.00
	Subtotal	\$ 4,392.49
	OH&P	\$ 329.44
	<b>TOTAL</b>	<b>\$ 4,721.93</b>

**Notes**

-CMU wall must be installed in order to complete deck support angle per M/S4.9

**Inclusions/Exclusions**

- 1) Includes primed finish
- 2) Excludes work not mentioned above
- 3) Excludes HD galvanizing unless listed above

Thank you,

**Mike Roberts**

Senior Project Manager

Sonne Steel Inc.

[mike@sonnesteel.com](mailto:mike@sonnesteel.com)

M: 606-483-0961



Sonne Steel Inc.  
 48 Regina Lane  
 Smithfield, KY 40068

# REQUEST FOR PROPOSAL

---

PROJECT:	<b>Bullitt East High School Fine Arts Addition Mt Washington, KY</b>	REQUEST FOR PROPOSAL NO.:	<b>14</b>
OWNER:	<b>Bullitt County Public Schools 1040 Highway 44 East Shepherdsville, KY 40165</b>	DATE:	<b>28-Jun-2024</b>
TO CONTRACTOR:	<b>EH Construction</b>	ARCHITECT:	<b>Studio Kremer Architects 1231 S Shelby Street Louisville, KY 40203</b>
		ARCHITECT'S PROJECT NO.:	<b>2022-35 BG# 23-050</b>

---

Please submit an itemized quotation for changes in the Contract Sum and/or Time incidental to proposed modifications to the Contract Documents described herein.

THIS IS NOT A CHANGE ORDER NOR A DIRECTION TO PROCEED WITH THE WORK DESCRIBED HEREIN

---

## Description:

Provide price proposal for the following:

- Item 1:** Reference Drawing S2.4 – Second Floor/Low Roof Framing Plan – Area B
- a. Replace with revised Drawing S2.4 attached. Revisions are clouded.
    - Add new W8x24 beam at Grid N.6 and 20 to support existing joist and new joist framing.
- Item 2:** Reference Drawing S4.9 – Framing Sections
- a. Replace with revised Drawing S4.9 attached. Revisions are clouded.
    - Add details M and N.

## Attachments:

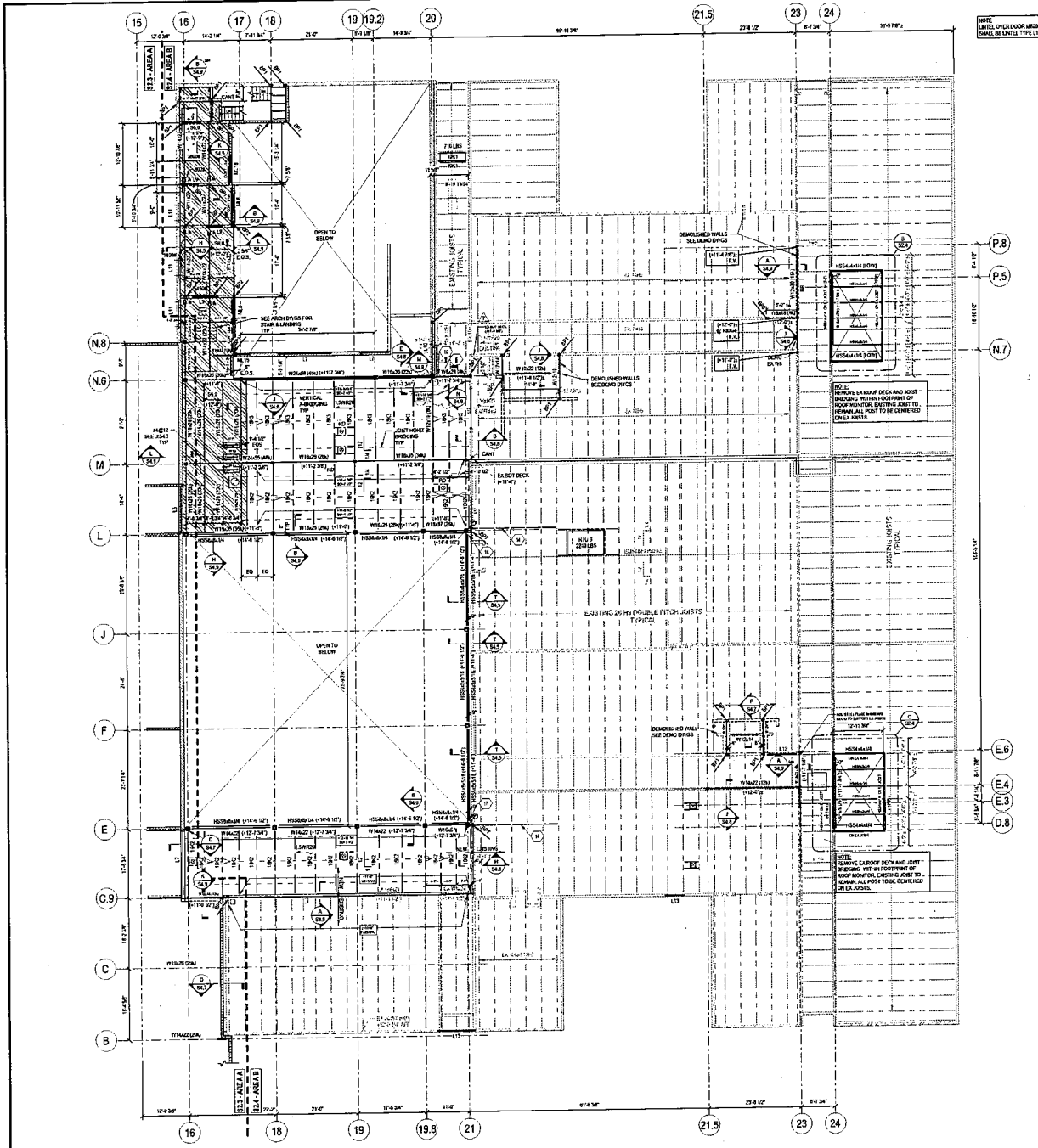
S2.4, S4.9

---

ISSUED:	<b>28-Jun-2024</b>	ARCHITECT:	<b>studio kremer architects</b>
CONTRACTOR:	<b>EH Construction</b>	BY:	<b>Amy Hagan, PE   B+K</b>

---



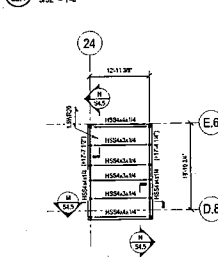


**ROOF FRAMING TAG NOTES**

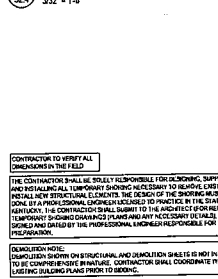
1. ROOF FRAMING TAGS TO BE ON NEW BEARING WALL LOCATION. IF NEW PERMANENT.
2. CALL PARTITION WALLS TO DECK. SEE DET. 15.1 FOR COLUMN BRACE. SEE DET. 15.1.
3. FASTEN ROOF DECK TO BEAM OR CONT. PL. BY 8" PAF. @ 4" O.C.
4. FASTEN ROOF DECK TO SPAN BETWEEN JOIST BY #4 TEX SCREWS @ 4" O.C.
5. EX BEARING WALL TO BE ON EXISTING FOUNDATION. TO BE CONNECTED TO STEEL COLUMN BY PL. W/ 2" WELDS. TO COLUMN BY #4 FLET WELDS. SEE DET. 15.1 FOR BEAM TO FLET WELDS.
6. CONT. PL. 18 GA. @ 12" BY 4" TEX SCREWS @ 4" O.C. TO DECK.
7. FILL VERT. JOINTS WITH 1:3 PART. CONC. RELATIVE TO NEW WALL. ADJUST HORZ. LEG OF JOINT PLATE AS REQUIRED. SEE DET. 15.1.
8. SHAKE UP STEEL JOIST AND BRIDGE FOR NEW CONSTRUCTION. JOIST FIRST BEARING WALL MUST BEAM ELEVATION @ 4" O.C.
9. VERTICALLY ORIENTED LVL @ 2" PAF TO STEEL WALL. WALL TO BE ON EXISTING TOP OF FOUNDATION @ 4" O.C.
10. CONT. LVL @ 18 GA. @ 12" BY 4" TEX SCREWS @ 4" O.C. TO DECK. AND JOIST OF FRAM. JOIST. SHIP FRAMING TO BE IN PLACE PRIOR TO ERECTING JOIST ON CHANGING EXISTING FRAMING. W/ 2" WELDS TO EXISTING JOIST. JOIST W/ 2" FLET WELDS. ATTACH TO DECK BY 1/2" TOP SCREWS @ 4" O.C. LAY TO CONTINUOUS OR SPACED PL. 1/8" @ 4" BY 3/4" FLET WELD ALL JOISTS.
11. JOIST CONNECTIONS TO EXISTING FOUNDATION POINT LOADS TO BE AT THE LOCATION. COORDINATE LOCATION OF VENTS IN MECHANICAL CONNECTIONS.
12. NEW WALLS & EXISTING OPENINGS. EXISTING WINDY FRAME TO REMAIN. LOCAL LVL @ 18 GA. @ 12" BY 4" TEX SCREWS @ 4" O.C. TO DECK.
13. FRAME JOIST W/ 2" FLET WELDS TO LVL @ 18 GA. @ 12" BY 4" TEX SCREWS @ 4" O.C. TO DECK. W/ 2" FLET WELDS TO BEAM AND TO PL. TOP AND W/ 2" FLET WELDS TO JOIST @ 4" O.C. COORDINATE AS REQUIRED.

14. VERTICALLY ORIENTED LVL @ 2" PAF TO STEEL WALL. WALL TO BE ON EXISTING TOP OF FOUNDATION @ 4" O.C.
15. CONT. LVL @ 18 GA. @ 12" BY 4" TEX SCREWS @ 4" O.C. TO DECK. AND JOIST OF FRAM. JOIST. SHIP FRAMING TO BE IN PLACE PRIOR TO ERECTING JOIST ON CHANGING EXISTING FRAMING. W/ 2" WELDS TO EXISTING JOIST. JOIST W/ 2" FLET WELDS. ATTACH TO DECK BY 1/2" TOP SCREWS @ 4" O.C. LAY TO CONTINUOUS OR SPACED PL. 1/8" @ 4" BY 3/4" FLET WELD ALL JOISTS.
16. NEW WALLS & EXISTING OPENINGS. EXISTING WINDY FRAME TO REMAIN. LOCAL LVL @ 18 GA. @ 12" BY 4" TEX SCREWS @ 4" O.C. TO DECK.
17. FRAME JOIST W/ 2" FLET WELDS TO LVL @ 18 GA. @ 12" BY 4" TEX SCREWS @ 4" O.C. TO DECK. W/ 2" FLET WELDS TO BEAM AND TO PL. TOP AND W/ 2" FLET WELDS TO JOIST @ 4" O.C. COORDINATE AS REQUIRED.

**ROOF MONITOR NORTH ROOF FRAMING PLAN**



**ROOF MONITOR SOUTH ROOF FRAMING PLAN**

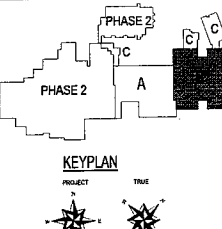


**FRAMING PLAN NOTES**

1. ELEVATIONS SHOWN ARE TO THE TOP OF THE STEEL AND ARE REFERENCED FROM THE FINISHED FLOOR FINISH. ABSOLUTE ELEVATION @ 11' 4" 1/2". 2ND FLOOR ELEVATION @ 9' 4" 1/2". 1ST FLOOR ELEVATION @ 9' 4" 1/2". 1ST FLOOR ELEVATION @ 9' 4" 1/2". 1ST FLOOR ELEVATION @ 9' 4" 1/2".
2. FINISHED SECOND FLOOR MECHANICAL PLATFORM ELEVATION @ 12' 0" U.L.O.
3. TOP OF SECOND FLOOR STEEL BEAMS @ 11' 4" 1/2" SEE SLICES.
4. SEE DET. 15.1 FOR GENERAL NOTES.
5. SEE DET. 15.1 FOR SPECIAL INSPECTION NOTES.
6. SEE DET. 15.1 & 15.2 FOR TYPICAL FRAMING DETAILS.
7. SEE DET. 15.1 FOR COLUMN SCHEDULE.
8. SPALL BEAMS. JOISTS EVENT. THROUGHOUT BAY U.O.
9. SIZE AND LOCATION OF JOIST TOP MECHANICAL LINES SHALL BE COORDINATED WITH THE MECHANICAL CONTRACTOR. DIMENSION HEIGHT OF LANT INCLUDING CURBS SHALL NOT EXCEED JOIST BROWTH ON PLAN. SEE DET. 15.1 FOR ADDITIONAL FRAMING REQUIREMENTS @ 11' 4" 1/2".
10. NEW JOISTS IN THE LANT BUILDING SHALL HAVE 2" DIA. CABLES. SPICES AS ALLOWED BY AVAILABLE IN TOP CHORD AND VENT TO TOP ROOF DECK W/ 2" WELDS @ 4" O.C.

**FRAMING LEGEND**

- 1. 18" WIDE @ 12" O.C. GALV. FINISH TOP STEEL ROOF DECK.
- 2. 2" W/ 2" GALV. FINISH ACROUSTIC DOWEL STEEL ROOF DECK.
- 3. 2" W/ 2" GALV. FINISH ACROUSTIC DOWEL STEEL ROOF DECK.
- 4. 2" W/ 2" GALV. FINISH ACROUSTIC DOWEL STEEL ROOF DECK.
- 5. 2" W/ 2" GALV. FINISH ACROUSTIC DOWEL STEEL ROOF DECK.
- 6. 2" W/ 2" GALV. FINISH ACROUSTIC DOWEL STEEL ROOF DECK.
- 7. 2" W/ 2" GALV. FINISH ACROUSTIC DOWEL STEEL ROOF DECK.
- 8. 2" W/ 2" GALV. FINISH ACROUSTIC DOWEL STEEL ROOF DECK.
- 9. 2" W/ 2" GALV. FINISH ACROUSTIC DOWEL STEEL ROOF DECK.
- 10. 2" W/ 2" GALV. FINISH ACROUSTIC DOWEL STEEL ROOF DECK.
- 11. 2" W/ 2" GALV. FINISH ACROUSTIC DOWEL STEEL ROOF DECK.
- 12. 2" W/ 2" GALV. FINISH ACROUSTIC DOWEL STEEL ROOF DECK.
- 13. 2" W/ 2" GALV. FINISH ACROUSTIC DOWEL STEEL ROOF DECK.
- 14. 2" W/ 2" GALV. FINISH ACROUSTIC DOWEL STEEL ROOF DECK.
- 15. 2" W/ 2" GALV. FINISH ACROUSTIC DOWEL STEEL ROOF DECK.
- 16. 2" W/ 2" GALV. FINISH ACROUSTIC DOWEL STEEL ROOF DECK.
- 17. 2" W/ 2" GALV. FINISH ACROUSTIC DOWEL STEEL ROOF DECK.
- 18. 2" W/ 2" GALV. FINISH ACROUSTIC DOWEL STEEL ROOF DECK.
- 19. 2" W/ 2" GALV. FINISH ACROUSTIC DOWEL STEEL ROOF DECK.
- 20. 2" W/ 2" GALV. FINISH ACROUSTIC DOWEL STEEL ROOF DECK.
- 21. 2" W/ 2" GALV. FINISH ACROUSTIC DOWEL STEEL ROOF DECK.
- 22. 2" W/ 2" GALV. FINISH ACROUSTIC DOWEL STEEL ROOF DECK.
- 23. 2" W/ 2" GALV. FINISH ACROUSTIC DOWEL STEEL ROOF DECK.
- 24. 2" W/ 2" GALV. FINISH ACROUSTIC DOWEL STEEL ROOF DECK.
- 25. 2" W/ 2" GALV. FINISH ACROUSTIC DOWEL STEEL ROOF DECK.
- 26. 2" W/ 2" GALV. FINISH ACROUSTIC DOWEL STEEL ROOF DECK.
- 27. 2" W/ 2" GALV. FINISH ACROUSTIC DOWEL STEEL ROOF DECK.
- 28. 2" W/ 2" GALV. FINISH ACROUSTIC DOWEL STEEL ROOF DECK.
- 29. 2" W/ 2" GALV. FINISH ACROUSTIC DOWEL STEEL ROOF DECK.
- 30. 2" W/ 2" GALV. FINISH ACROUSTIC DOWEL STEEL ROOF DECK.
- 31. 2" W/ 2" GALV. FINISH ACROUSTIC DOWEL STEEL ROOF DECK.
- 32. 2" W/ 2" GALV. FINISH ACROUSTIC DOWEL STEEL ROOF DECK.
- 33. 2" W/ 2" GALV. FINISH ACROUSTIC DOWEL STEEL ROOF DECK.
- 34. 2" W/ 2" GALV. FINISH ACROUSTIC DOWEL STEEL ROOF DECK.
- 35. 2" W/ 2" GALV. FINISH ACROUSTIC DOWEL STEEL ROOF DECK.
- 36. 2" W/ 2" GALV. FINISH ACROUSTIC DOWEL STEEL ROOF DECK.
- 37. 2" W/ 2" GALV. FINISH ACROUSTIC DOWEL STEEL ROOF DECK.
- 38. 2" W/ 2" GALV. FINISH ACROUSTIC DOWEL STEEL ROOF DECK.
- 39. 2" W/ 2" GALV. FINISH ACROUSTIC DOWEL STEEL ROOF DECK.
- 40. 2" W/ 2" GALV. FINISH ACROUSTIC DOWEL STEEL ROOF DECK.
- 41. 2" W/ 2" GALV. FINISH ACROUSTIC DOWEL STEEL ROOF DECK.
- 42. 2" W/ 2" GALV. FINISH ACROUSTIC DOWEL STEEL ROOF DECK.
- 43. 2" W/ 2" GALV. FINISH ACROUSTIC DOWEL STEEL ROOF DECK.
- 44. 2" W/ 2" GALV. FINISH ACROUSTIC DOWEL STEEL ROOF DECK.
- 45. 2" W/ 2" GALV. FINISH ACROUSTIC DOWEL STEEL ROOF DECK.
- 46. 2" W/ 2" GALV. FINISH ACROUSTIC DOWEL STEEL ROOF DECK.
- 47. 2" W/ 2" GALV. FINISH ACROUSTIC DOWEL STEEL ROOF DECK.
- 48. 2" W/ 2" GALV. FINISH ACROUSTIC DOWEL STEEL ROOF DECK.
- 49. 2" W/ 2" GALV. FINISH ACROUSTIC DOWEL STEEL ROOF DECK.
- 50. 2" W/ 2" GALV. FINISH ACROUSTIC DOWEL STEEL ROOF DECK.
- 51. 2" W/ 2" GALV. FINISH ACROUSTIC DOWEL STEEL ROOF DECK.
- 52. 2" W/ 2" GALV. FINISH ACROUSTIC DOWEL STEEL ROOF DECK.
- 53. 2" W/ 2" GALV. FINISH ACROUSTIC DOWEL STEEL ROOF DECK.
- 54. 2" W/ 2" GALV. FINISH ACROUSTIC DOWEL STEEL ROOF DECK.
- 55. 2" W/ 2" GALV. FINISH ACROUSTIC DOWEL STEEL ROOF DECK.
- 56. 2" W/ 2" GALV. FINISH ACROUSTIC DOWEL STEEL ROOF DECK.
- 57. 2" W/ 2" GALV. FINISH ACROUSTIC DOWEL STEEL ROOF DECK.
- 58. 2" W/ 2" GALV. FINISH ACROUSTIC DOWEL STEEL ROOF DECK.
- 59. 2" W/ 2" GALV. FINISH ACROUSTIC DOWEL STEEL ROOF DECK.
- 60. 2" W/ 2" GALV. FINISH ACROUSTIC DOWEL STEEL ROOF DECK.
- 61. 2" W/ 2" GALV. FINISH ACROUSTIC DOWEL STEEL ROOF DECK.
- 62. 2" W/ 2" GALV. FINISH ACROUSTIC DOWEL STEEL ROOF DECK.
- 63. 2" W/ 2" GALV. FINISH ACROUSTIC DOWEL STEEL ROOF DECK.
- 64. 2" W/ 2" GALV. FINISH ACROUSTIC DOWEL STEEL ROOF DECK.
- 65. 2" W/ 2" GALV. FINISH ACROUSTIC DOWEL STEEL ROOF DECK.
- 66. 2" W/ 2" GALV. FINISH ACROUSTIC DOWEL STEEL ROOF DECK.
- 67. 2" W/ 2" GALV. FINISH ACROUSTIC DOWEL STEEL ROOF DECK.
- 68. 2" W/ 2" GALV. FINISH ACROUSTIC DOWEL STEEL ROOF DECK.
- 69. 2" W/ 2" GALV. FINISH ACROUSTIC DOWEL STEEL ROOF DECK.
- 70. 2" W/ 2" GALV. FINISH ACROUSTIC DOWEL STEEL ROOF DECK.
- 71. 2" W/ 2" GALV. FINISH ACROUSTIC DOWEL STEEL ROOF DECK.
- 72. 2" W/ 2" GALV. FINISH ACROUSTIC DOWEL STEEL ROOF DECK.
- 73. 2" W/ 2" GALV. FINISH ACROUSTIC DOWEL STEEL ROOF DECK.
- 74. 2" W/ 2" GALV. FINISH ACROUSTIC DOWEL STEEL ROOF DECK.
- 75. 2" W/ 2" GALV. FINISH ACROUSTIC DOWEL STEEL ROOF DECK.
- 76. 2" W/ 2" GALV. FINISH ACROUSTIC DOWEL STEEL ROOF DECK.
- 77. 2" W/ 2" GALV. FINISH ACROUSTIC DOWEL STEEL ROOF DECK.
- 78. 2" W/ 2" GALV. FINISH ACROUSTIC DOWEL STEEL ROOF DECK.
- 79. 2" W/ 2" GALV. FINISH ACROUSTIC DOWEL STEEL ROOF DECK.
- 80. 2" W/ 2" GALV. FINISH ACROUSTIC DOWEL STEEL ROOF DECK.
- 81. 2" W/ 2" GALV. FINISH ACROUSTIC DOWEL STEEL ROOF DECK.
- 82. 2" W/ 2" GALV. FINISH ACROUSTIC DOWEL STEEL ROOF DECK.
- 83. 2" W/ 2" GALV. FINISH ACROUSTIC DOWEL STEEL ROOF DECK.
- 84. 2" W/ 2" GALV. FINISH ACROUSTIC DOWEL STEEL ROOF DECK.
- 85. 2" W/ 2" GALV. FINISH ACROUSTIC DOWEL STEEL ROOF DECK.
- 86. 2" W/ 2" GALV. FINISH ACROUSTIC DOWEL STEEL ROOF DECK.
- 87. 2" W/ 2" GALV. FINISH ACROUSTIC DOWEL STEEL ROOF DECK.
- 88. 2" W/ 2" GALV. FINISH ACROUSTIC DOWEL STEEL ROOF DECK.
- 89. 2" W/ 2" GALV. FINISH ACROUSTIC DOWEL STEEL ROOF DECK.
- 90. 2" W/ 2" GALV. FINISH ACROUSTIC DOWEL STEEL ROOF DECK.
- 91. 2" W/ 2" GALV. FINISH ACROUSTIC DOWEL STEEL ROOF DECK.
- 92. 2" W/ 2" GALV. FINISH ACROUSTIC DOWEL STEEL ROOF DECK.
- 93. 2" W/ 2" GALV. FINISH ACROUSTIC DOWEL STEEL ROOF DECK.
- 94. 2" W/ 2" GALV. FINISH ACROUSTIC DOWEL STEEL ROOF DECK.
- 95. 2" W/ 2" GALV. FINISH ACROUSTIC DOWEL STEEL ROOF DECK.
- 96. 2" W/ 2" GALV. FINISH ACROUSTIC DOWEL STEEL ROOF DECK.
- 97. 2" W/ 2" GALV. FINISH ACROUSTIC DOWEL STEEL ROOF DECK.
- 98. 2" W/ 2" GALV. FINISH ACROUSTIC DOWEL STEEL ROOF DECK.
- 99. 2" W/ 2" GALV. FINISH ACROUSTIC DOWEL STEEL ROOF DECK.
- 100. 2" W/ 2" GALV. FINISH ACROUSTIC DOWEL STEEL ROOF DECK.



**SECOND FLOOR/LOW ROOF FRAMING PLAN - AREA B**  
3/22" x 1'-0"

CONTRACTOR TO VERIFY ALL DIMENSIONS ON THE FIELD.  
THE CONTRACTOR SHALL BE SOLELY RESPONSIBLE FOR OBTAINING, SUPPLYING, AND INSTALLING ALL MATERIALS AND EQUIPMENT TO BE USED IN THE CONSTRUCTION OF THE PROJECT. THE CONTRACTOR SHALL BE RESPONSIBLE FOR OBTAINING ALL NECESSARY PERMITS AND APPROVALS FROM THE LOCAL AND STATE AUTHORITIES. THE CONTRACTOR SHALL SUBMIT TO THE ARCHITECT FOR REVIEW AND APPROVAL ALL SHOP DRAWINGS AND MATERIAL SUBSTITUTIONS. THE CONTRACTOR SHALL BE RESPONSIBLE FOR OBTAINING ALL NECESSARY PERMITS AND APPROVALS FROM THE LOCAL AND STATE AUTHORITIES. THE CONTRACTOR SHALL BE RESPONSIBLE FOR OBTAINING ALL NECESSARY PERMITS AND APPROVALS FROM THE LOCAL AND STATE AUTHORITIES.

**CONSTRUCTION DOCUMENTS - BID SET**

PROJECT: **Built East High School - Fine Arts Addition**

DATE: 1/11/2023  
DRAWN BY: JAHM  
CHECKED BY: JAHM

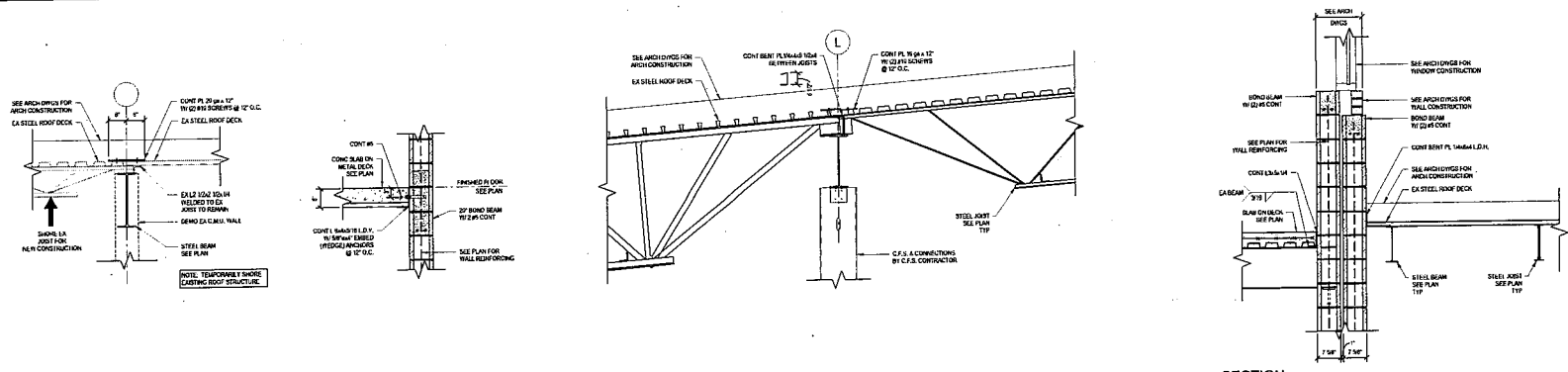
REVISIONS:

NO.	DATE	DESCRIPTION
1	1/11/2023	ISSUED FOR BIDDING

2022-35

S2.4

**BROWN+KUBICAN**  
STRUCTURAL ENGINEERS  
13115 Sandy Blaine Blvd., Suite 100  
Columbus, OH 43240  
614.291.1100

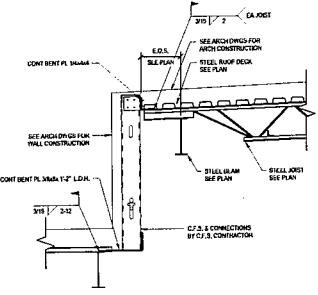


**A SECTION**  
3/4" = 1'-0"

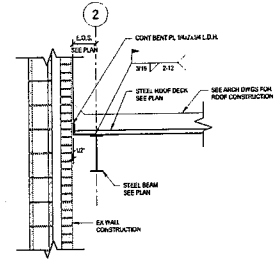
**B SECTION**  
3/4" = 1'-0"

**C SECTION**  
3/4" = 1'-0"

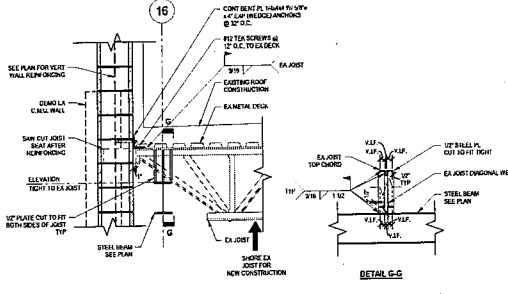
**D SECTION**  
3/4" = 1'-0"



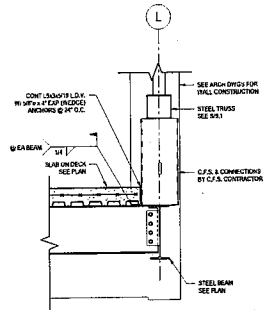
**E SECTION**  
3/4" = 1'-0"



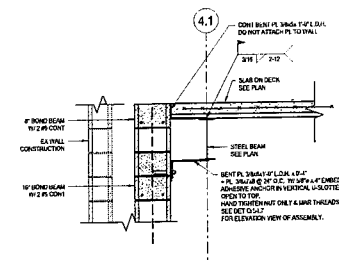
**F SECTION**  
3/4" = 1'-0"



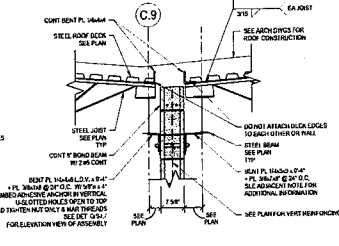
**G SECTION**  
3/4" = 1'-0"



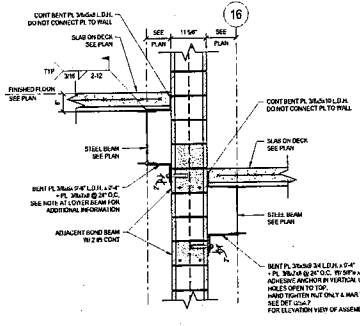
**H SECTION**  
3/4" = 1'-0"



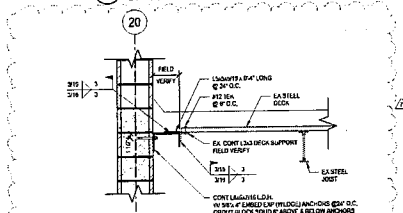
**I SECTION**  
3/4" = 1'-0"



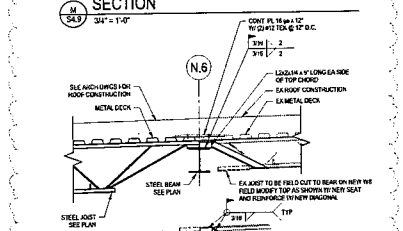
**J SECTION**  
3/4" = 1'-0"



**K SECTION**  
3/4" = 1'-0"



**L SECTION**  
3/4" = 1'-0"



**M SECTION**  
3/4" = 1'-0"

**CONSTRUCTION DOCUMENTS - BID SET**

FRAMING SECTIONS  
Bullitt East High School - Fine Arts Addition  
11460 KY 44  
Mt. Washington, NY 10007

BGA 23-050  
DATE: 11/06/2023  
DRAWN BY: J. ALAN  
CHECKED BY: A.B.  
REVISIONS:  
2022-35  
S4.9

STUDIO KUBICKI architects  
1315 S. 4th St., Suite 201, Seattle, WA 98104  
TEL: 206.467.1100 FAX: 206.467.1101  
WWW.STUDIOKUBICKI.COM

**BROWN+KUBICKI**  
STRUCTURAL ENGINEERS  
1100 1st Avenue, Suite 1000  
Seattle, WA 98101  
TEL: 206.467.1100 FAX: 206.467.1101  
WWW.BKSTRUCTURAL.COM