

BULLITT COUNTY PUBLIC SCHOOLS
DEPARTMENT OF TECHNOLOGY

KEVIN FUGATE, DIRECTOR & CIO
SARAH SMITH, ADMINISTRATIVE ASSISTANT
SARAH CARNES, INVENTORY SPECIALIST
ANDREW HOBBS, NETWORK ADMINISTRATOR

MEMO

July 28th, 2024

TO: Jesse Bacon, Superintendent *JB*

FR: Kevin Fugate, Director of Technology

RE: Tech Department Van Purchase Proposal

KW
8.13.24

The BCPS Technology Department currently faces challenges in delivering new school equipment and disposing of old equipment due to limited transportation resources. Our reliance on other departments for these tasks often results in delays, impacting the timely deployment of technology resources and creating inefficiencies in the overall operations.

We currently have a van that is on loan from the BCPS Transportation Department, but it's older and needs a lot of work. Currently, we have trouble hauling the lift and the box trailer with the van's age. For disposals, we rely on Facilities. This purchase would allow us to remove smaller disposals and improve efficiency for both departments. Facilities would still remove larger disposals but this would help us both tremendously. In the past, we've rented box trucks during special circumstances such as delivering TVs & carts from the former OMES building to the new location.

By acquiring a van, the department will enhance operational efficiency, reduce reliance on other departments, and generate potential cost savings through bulk purchasing. On classroom TVs alone, for example, if we purchase 100 this year there's a potential savings of between \$40,000 and \$50,000, which would offset or fully fund the vehicle cost. The van quote from Bachman Commerical is attached. This was the only dealer to have the van in stock and all prices were similar. Thank you for your consideration.

Below are the highlights of what the van purchase will allow us to do:

- **Efficiently deliver new school equipment:** Streamline the distribution process, ensuring timely deployment of technology resources to classrooms.
- **Effectively transport old disposal equipment:** Expedite the removal of obsolete equipment, freeing up valuable space and resources for our schools.
- **Reduce reliance on the other departments:** Optimize the use of internal resources by handling equipment transportation independently.
- **Potential cost savings:** Increased efficiency in equipment management may allow for bulk purchasing, leading to potential cost reductions.

OUR MISSION IS TO INSPIRE AND EQUIP OUR STUDENTS TO SUCCEED IN LIFE

Kevin

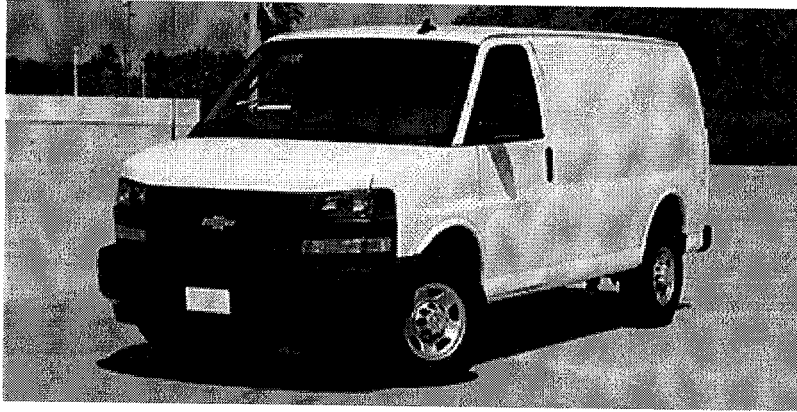
BULLITT COUNTY PUBLIC SCHOOLS IS AN EQUAL EDUCATION AND EMPLOYMENT INSTITUTION



Bachman Commercial

Chuck Hill | 502-395-3996 | c.hill@bachmanautogroup.com

Vehicle: [Retail] 2024 Chevrolet Express Cargo Van (CG23405) RWD 2500 135"





Bachman Commercial

Chuck Hill | 502-395-3996 | c.hill@bachmanautogroup.com

Vehicle: [Retail] 2024 Chevrolet Express Cargo Van (CG23405) RWD 2500 135" (Complete)

Quote Worksheet

	MSRP
Base Price	\$40,700.00
Dest Charge	\$1,895.00
Total Options	\$4,465.00
Subtotal	\$47,060.00
Subtotal Pre-Tax Adjustments	\$0.00
Less Customer Discount	(\$3,000.00)
Subtotal Discount	(\$3,000.00)
Trade-In	\$0.00
Subtotal Trade-In	\$0.00
Taxable Price	\$44,060.00
Sales Tax	\$0.00
Subtotal Taxes	\$0.00
Subtotal Post-Tax Adjustments	\$0.00
Total Sales Price	\$44,060.00

Comments:

Clark County

Dealer Signature / Date

Customer Signature / Date

Selected Model and Options

MODEL		
CODE	MODEL	MSRP
CG23405	2024 Chevrolet Express Cargo Van RWD 2500 135"	\$40,700.00

COLORS	
CODE	DESCRIPTION
GAZ	Summit White



This document contains information considered Confidential between GM and its Clients uniquely. The information provided is not intended for public disclosure. Prices, specifications, and availability are subject to change without notice, and do not include certain fees, taxes and charges that may be required by law or vary by manufacturer or region. Performance figures are guidelines only, and actual performance may vary. Photos may not represent actual vehicles or exact configurations. Content based on report preparer's input is subject to the accuracy of the input provided.
Data Version: 23139. Data Updated: Aug 7, 2024 6:42:00 PM PDT.

Vehicle: [Retail] 2024 Chevrolet Express Cargo Van (CG23405) RWD 2500 135" (Complete)

BODY CODE

CODE	DESCRIPTION	FRONT WEIGHT	REAR WEIGHT	MSRP
ZW9	Body, standard (STD)	0.00 lbs	0.00 lbs	\$0.00

EMISSIONS

CODE	DESCRIPTION	FRONT WEIGHT	REAR WEIGHT	MSRP
FE9	Emissions, Federal requirements	0.00 lbs	0.00 lbs	\$0.00

ENGINE

CODE	DESCRIPTION	FRONT WEIGHT	REAR WEIGHT	MSRP
L8T	Engine, 6.6L V8 with Direct Injection and Variable Valve Timing, gasoline, (401 hp [299 kW] @ 5200 rpm, 464 lb-ft of torque [629 N-m] @ 4000 rpm) (Early model year units with (WP9) Communications Package may be built with content. Requires (KG4) 150-amp alternator or (KW5) 220-amp alternator. Includes external engine oil cooler. Reference the Engine/Axle page for availability. Included with (WP9) Communications Package on orders placed prior to October 2, 2023, (WPD) Safety Package and (ZL3) Enhanced Convenience Package. Requires (N8X) 8-speed heavy-duty automatic transmission.)	163.00 lbs	0.00 lbs	\$1,895.00

TRANSMISSION

CODE	DESCRIPTION	FRONT WEIGHT	REAR WEIGHT	MSRP
N8X	Transmission, 8-speed automatic, heavy-duty, electronically controlled with overdrive and tow/haul mode. Includes Cruise Grade Braking, Powertrain Grade Braking, and Tap-Up/Tap-Down Driver Shift Control (Requires (L8T) 6.6L gas V8 engine. Reference the Engine/Axle page for availability.)	5.00 lbs	3.00 lbs	Inc.

AXLE

CODE	DESCRIPTION	FRONT WEIGHT	REAR WEIGHT	MSRP
GU6	Rear axle, 3.42 ratio (Reference the Engine/Axle page for availability.)	0.00 lbs	0.00 lbs	\$0.00



This document contains information considered Confidential between GM and its Clients uniquely. The information provided is not intended for public disclosure. Prices, specifications, and availability are subject to change without notice, and do not include certain fees, taxes and charges that may be required by law or vary by manufacturer or region. Performance figures are guidelines only, and actual performance may vary. Photos may not represent actual vehicles or exact configurations. Content based on report preparer's input is subject to the accuracy of the input provided.
Data Version: 23139. Data Updated: Aug 7, 2024 6:42:00 PM PDT.

Vehicle: [Retail] 2024 Chevrolet Express Cargo Van (CG23405) RWD 2500 135" (Complete)**SIDE DOOR**

CODE	DESCRIPTION	FRONT WEIGHT	REAR WEIGHT	MSRP
E24	Door, swing-out passenger-side, 60/40 split (STD)	0.00 lbs	0.00 lbs	\$0.00

PREFERRED EQUIPMENT GROUP

CODE	DESCRIPTION	FRONT WEIGHT	REAR WEIGHT	MSRP
1WT	Work Van Preferred Equipment Group includes standard equipment	0.00 lbs	0.00 lbs	\$0.00

WHEELS

CODE	DESCRIPTION	FRONT WEIGHT	REAR WEIGHT	MSRP
QB5	Wheels, 4 - 16" x 6.5" (40.6 cm x 16.5 cm) steel includes Gray center caps and steel spare (STD)	0.00 lbs	0.00 lbs	\$0.00

SPARE TIRE

CODE	DESCRIPTION	FRONT WEIGHT	REAR WEIGHT	MSRP
ZLP	Tire, spare LT245/75R16E all-season, blackwall located at rear underbody of vehicle (STD)	0.00 lbs	0.00 lbs	\$0.00

PAINT SCHEME

CODE	DESCRIPTION	FRONT WEIGHT	REAR WEIGHT	MSRP
ZY1	Paint, solid	0.00 lbs	0.00 lbs	\$0.00

PAINT

CODE	DESCRIPTION	FRONT WEIGHT	REAR WEIGHT	MSRP
GAZ	Summit White	0.00 lbs	0.00 lbs	\$0.00



This document contains information considered Confidential between GM and its Clients uniquely. The information provided is not intended for public disclosure. Prices, specifications, and availability are subject to change without notice, and do not include certain fees, taxes and charges that may be required by law or vary by manufacturer or region. Performance figures are guidelines only, and actual performance may vary. Photos may not represent actual vehicles or exact configurations. Content based on report preparer's input is subject to the accuracy of the input provided.
Data Version: 23139. Data Updated: Aug 7, 2024 6:42:00 PM PDT.

Vehicle: [Retail] 2024 Chevrolet Express Cargo Van (CG23405) RWD 2500 135" (Complete)

SEAT TYPE

CODE	DESCRIPTION	FRONT WEIGHT	REAR WEIGHT	MSRP
AS5	Seats, front bucket with Custom Cloth trim head restraints and inboard armrests (Requires (**G) interior trim. Includes (BA3) console with swing-out storage bin.)	0.00 lbs	0.00 lbs	\$70.00

SEAT TRIM

CODE	DESCRIPTION	FRONT WEIGHT	REAR WEIGHT	MSRP
93G	Medium Pewter, Custom Cloth Seat Trim	0.00 lbs	0.00 lbs	\$0.00

SEATING ARRANGEMENT

CODE	DESCRIPTION	FRONT WEIGHT	REAR WEIGHT	MSRP
ZX2	Seating arrangement, driver and front passenger high-back buckets, with head restraints and vinyl or cloth trim (STD) (Not available with (AJ3) driver-side only frontal airbag.)	0.00 lbs	0.00 lbs	\$0.00

RADIO

CODE	DESCRIPTION	FRONT WEIGHT	REAR WEIGHT	MSRP
UOF	Audio system, AM/FM stereo with MP3 player seek-and-scan, digital clock, TheftLock, random select, auxiliary jack and 2 front door speakers (STD) (Not available with (U2K) SiriusXM Radio or (WP9) Communications Package on orders placed prior to October 2, 2023.)	0.00 lbs	0.00 lbs	\$0.00

ADDITIONAL EQUIPMENT - PACKAGE

CODE	DESCRIPTION	FRONT WEIGHT	REAR WEIGHT	MSRP
ZQ3	Driver Convenience Package includes Tilt-Wheel and (K34) cruise control (Included with (WP9) Communications Package, (WPD) Safety Package, (ZL3) Enhanced Convenience Package or (PCH) Hotel Shuttle Package.)	0.00 lbs	0.00 lbs	\$395.00



This document contains information considered Confidential between GM and its Clients uniquely. The information provided is not intended for public disclosure. Prices, specifications, and availability are subject to change without notice, and do not include certain fees, taxes and charges that may be required by law or vary by manufacturer or region. Performance figures are guidelines only, and actual performance may vary. Photos may not represent actual vehicles or exact configurations. Content based on report preparer's input is subject to the accuracy of the input provided.
 Data Version: 23139. Data Updated: Aug 7, 2024 6:42:00 PM PDT.

Vehicle: [Retail] 2024 Chevrolet Express Cargo Van (CG23405) RWD 2500 135" (Complete)**ADDITIONAL EQUIPMENT - MECHANICAL**

CODE	DESCRIPTION	FRONT WEIGHT	REAR WEIGHT	MSRP
G80	Differential, heavy-duty locking rear	0.00 lbs	5.00 lbs	\$325.00
KW5	Alternator, 220 amps	3.00 lbs	0.00 lbs	\$150.00
UA1	Battery, heavy-duty 770 cold-cranking amps, maintenance-free with rundown protection and retained accessory power (Required with (Y3H) Paratransit Package. Not available with (TP3) dual batteries (770 cca primary and 770 cca isolated).)	5.00 lbs	0.00 lbs	\$60.00
UY7	Trailer provisions, trairling wire harness only (Included with (Z82) heavy-duty trairling equipment.)	0.00 lbs	1.00 lbs	Inc.
Z82	Trairling equipment, heavy-duty includes trairling hitch platform and dual 4-pin/7-pin sealed connector (Included with (ZL3) Enhanced Convenience Package. Includes (UY7) trailer wiring.)	-3.00 lbs	52.00 lbs	\$280.00



This document contains information considered Confidential between GM and its Clients uniquely. The information provided is not intended for public disclosure. Prices, specifications, and availability are subject to change without notice, and do not include certain fees, taxes and charges that may be required by law or vary by manufacturer or region. Performance figures are guidelines only, and actual performance may vary. Photos may not represent actual vehicles or exact configurations. Content based on report preparer's input is subject to the accuracy of the input provided.
Data Version: 23139. Data Updated: Aug 7, 2024 6:42:00 PM PDT.

Vehicle: [Retail] 2024 Chevrolet Express Cargo Van (CG23405) RWD 2500 135" (Complete)

ADDITIONAL EQUIPMENT - INTERIOR

CODE	DESCRIPTION	FRONT WEIGHT	REAR WEIGHT	MSRP
5H1	Key equipment, two additional keys for single key system Provides two additional spare keys for a total of (4). (Keys will be cut but not programmed) NOTE: programming of keys is at customer's expense. Programming keys is not a warranty expense. (Shipped loose.)	0.00 lbs	0.00 lbs	\$45.00
—	Visors, driver and front passenger, cloth, padded (Included and only available with (AS5) front bucket seats with Custom Cloth.)	0.00 lbs	0.00 lbs	Inc.
ATG	Remote Keyless Entry with 2 transmitters and remote panic button (Included with (ZL3) Enhanced Convenience Package. Required with (BTV) remote vehicle starter system.)	0.00 lbs	0.00 lbs	\$175.00
BA3	Console, engine cover with swing-out storage bin (Included with (AS5) front bucket seats with Custom Cloth.)	2.00 lbs	1.00 lbs	Inc.
K34	Cruise control (Included with (ZQ3) Driver Convenience Package. Requires (UF3) high idle switch.)	0.00 lbs	0.00 lbs	\$0.00
TR9	Lighting, auxiliary with reading lights (Includes (U80) 8-point digital compass.)	1.00 lbs	1.00 lbs	\$85.00
U80	Compass, 8-point digital located in the Driver Information Center (Included and only available with (TR9) auxiliary lighting.)	0.00 lbs	0.00 lbs	Inc.
UTJ	Theft Alarm Notification requires paid plan, working electrical system, cell reception, GPS signal, armed GM factory-installed theft-deterrent system, contact method on file and enrollment to receive alerts. Message and data rates may apply. See onstar.com for details and limitations (Included and only available with (ATG) Remote Keyless Entry. Requires (UE1) OnStar.)	0.00 lbs	0.00 lbs	Inc.

ADDITIONAL EQUIPMENT - SAFETY-INTERIOR

CODE	DESCRIPTION	FRONT WEIGHT	REAR WEIGHT	MSRP
UEU	Forward Collision Alert (Requires (TR9) auxiliary lighting and (ASF) seat-mounted side impact and roof-rail mounted head-curtain airbags. Includes (UFL) Lane Departure Warning. (C36) rear heater is not available without (C69) rear air conditioning. Not available with (Y3H) Paratransit Package.)	0.00 lbs	0.00 lbs	\$295.00
UFL	Lane Departure Warning (Included and only available with (UEU) Forward Collision Alert.)	0.00 lbs	0.00 lbs	Inc.
UFT	Side Blind Zone Alert (Included with (WPD) Safety Package. Requires (UD7) Rear Park Assist.)	0.00 lbs	0.00 lbs	\$395.00



This document contains information considered Confidential between GM and its Clients uniquely. The information provided is not intended for public disclosure. Prices, specifications, and availability are subject to change without notice, and do not include certain fees, taxes and charges that may be required by law or vary by manufacturer or region. Performance figures are guidelines only, and actual performance may vary. Photos may not represent actual vehicles or exact configurations. Content based on report preparer's input is subject to the accuracy of the input provided.
Data Version: 23139. Data Updated: Aug 7, 2024 6:42:00 PM PDT.

Vehicle: [Retail] 2024 Chevrolet Express Cargo Van (CG23405) RWD 2500 135" (✔ Complete)

ADDITIONAL EQUIPMENT - SAFETY-EXTERIOR

CODE	DESCRIPTION	FRONT WEIGHT	REAR WEIGHT	MSRP
UD7	Rear Park Assist (Included with (WPD) Safety Package. Required with (UFT) Side Blind Zone Alert.)	0.00 lbs	4.00 lbs	\$295.00
Options Total		176.00 lbs	67.00 lbs	\$4,465.00



This document contains information considered Confidential between GM and its Clients uniquely. The information provided is not intended for public disclosure. Prices, specifications, and availability are subject to change without notice, and do not include certain fees, taxes and charges that may be required by law or vary by manufacturer or region. Performance figures are guidelines only, and actual performance may vary. Photos may not represent actual vehicles or exact configurations. Content based on report preparer's input is subject to the accuracy of the input provided.
Data Version: 23139. Data Updated: Aug 7, 2024 6:42:00 PM PDT.