



# AIA® Document G731™ – 2019

## Change Order, Construction Manager as Adviser Edition

**PROJECT:** *(name and address)*  
Christian County High School

5185 Fort Campbell Blvd Hopkinsville,  
KY 42240

**OWNER:** *(name and address)*  
Christian County Board of Education  
200 Glass Avenue  
Hopkinsville, KY 42240

**CONTRACTOR:** *(name and address)*  
Drywall Systems Plus (formerly Lassiter  
Plaster)  
614 Nkorth 4th Street  
Murray, KY 42071

**CONTRACT INFORMATION:**  
Contract For: BP 092-01 Gyp  
Board Assemblies  
Date: September 08, 2023

**ARCHITECT:** *(name and address)*  
Hafer PSC  
21 Southeast Third St, Ste 800  
Evansville, IN 47708

**CHANGE ORDER INFORMATION:**  
Change Order Number: 035  
Date: August 7, 2024

**CONSTRUCTION MANAGER:** *(name and address)*  
Alliance Corporation  
116 E. College Street  
Glasgow, KY 42141

**THE CONTRACT IS CHANGED AS FOLLOWS:**

*(Insert a detailed description of the change and, if applicable, attach or reference specific exhibits. Also include agreed upon adjustments attributable to executed Construction Change Directives.)*

Deduct sheathing at roof parapets per PR #17. Deduct gypsum board at restroom ceilings per PR #19.

The original Contract Sum was	\$ 1,506,326.00
Net change by previously authorized Change Orders	\$ 0.00
The Contract Sum prior to this Change Order was	\$ 1,506,326.00
The Contract Sum will be decreased by this Change Order in the amount of	\$ 4,167.56
The new Contract Sum including this Change Order will be	\$ 1,502,158.44

The Contract Time will be unchanged by Zero (0) days.  
The Contractor's Work shall be substantially complete on

**NOTE:** This Change Order does not include adjustments to the Contract Sum or Guaranteed Maximum Price, or the Contract Time, that have been authorized by Construction Change Directive until the cost and time have been agreed upon by both the Owner and Contractor, in which case a Change Order is executed to supersede the Construction Change Directive.

**NOT VALID UNTIL SIGNED BY THE ARCHITECT, CONSTRUCTION MANAGER, CONTRACTOR, AND OWNER.**

Hafer PSC  
\_\_\_\_\_  
**ARCHITECT** *(Firm name)*

Alliance Corporation  
\_\_\_\_\_  
**CONSTRUCTION MANAGER** *(Firm name)*

\_\_\_\_\_  
**SIGNATURE**  
Eric Rang, AIA, Senior Associate  
\_\_\_\_\_  
**PRINTED NAME AND TITLE**

\_\_\_\_\_  
**SIGNATURE**  
Kevin Hitchel, Sr. Project Manager  
\_\_\_\_\_  
**PRINTED NAME AND TITLE**

\_\_\_\_\_  
**DATE:**

\_\_\_\_\_  
**DATE:**

Drywall Systems Plus (formerly Lassiter Plaster)  
\_\_\_\_\_  
**CONTRACTOR** *(Firm name)*

Christian County Board of Education  
\_\_\_\_\_  
**OWNER** *(Firm name)*

\_\_\_\_\_  
**SIGNATURE**  
RaShae Davis  
\_\_\_\_\_  
**PRINTED NAME AND TITLE**

\_\_\_\_\_  
**SIGNATURE**  
Christopher Bentzel, Superintendent  
\_\_\_\_\_  
**PRINTED NAME AND TITLE**

\_\_\_\_\_  
**DATE:**

\_\_\_\_\_  
**DATE:**



# PROPOSED CHANGE ORDER

**PROJECT** Christian County High School

**CONTRACTOR/SUPPLIER** Drywall Systems Plus

**BID PACKAGE** 092

DETAIL ITEM		AMOUNT
LABOR	\$	(2,304.00)
MATERIALS	\$	(1,701.40)
PROFIT & OVERHEAD	\$	(102.08)
BOND INSURANCE	\$	(60.08)
<b>COST BREAKDOWN TOTAL</b>	<b>\$</b>	<b>(4,167.56)</b>

## DESCRIPTION

Deduct sheathing at roof parapets per PR #17.

Deduct gypsum board at restroom ceilings per PR #19.

**PR #** 17 and 19 (ATTACH PR)

## CHANGE ORDER INITIATED BY:

ARCHITECT/ENGINEER  
 OWNER  
 CONTRACTOR  
 CM  
 CODE OFFICIAL  
 OTHER \_\_\_\_\_

**PLEASE INCLUDE THIS FORM WITH EVERY  
CHANGE ORDER.**

---

**PROPOSAL REQUEST**

---

**Project:** Christian County High School  
5185 Ft. Campbell Blvd  
Hopkinsville, KY 42240

**PR No.:** 017

**Date:** May 29, 2024

**Owner:** Christian County Public Schools  
222 Glass Ave  
Hopkinsville, KY 42240

**Project Number:** 2106-204

**Contract for:**

**To:** Kevin Hitchell  
Alliance Corporation  
116 E. College Steet  
Glasgow, KY 42141

**RE: Parapet Plywood**

---

Please submit an itemized quotation for changes in the Contract Sum and/or Time incidental to proposed modifications to the Contract Documents described herein.  
THIS IS NOT A CHANGE ORDER NOR A DIRECTION TO PROCEED WITH THE WORK DESCRIBED HEREIN.

---

**Description:**

At the following parapet details that are structured with cold form studs, add a layer of ½” gyp bd. Sheathing to the roof side of the studs. Change the insulation from 2” to 1.5” so the parapet will be level with the adjacent cmu wall, and the coping/engineered cap will work as submitted for the right width of wall.

**Details:**

- 5/A3.4
- 6/A3.4
- 7/A3.4
- 8/A3.4

**Attachments:** Revised A3.4, Sheet A3.2 noted with locations and lengths of parapets requiring plywood.

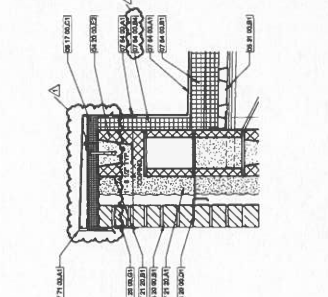
**By:** Eric Rang

**CC:**

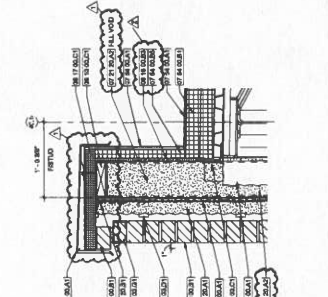




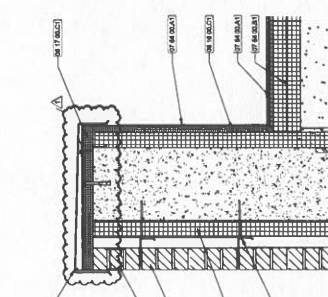
Key Value	Keynote Text
01 11 18A	INSULATING CONCRETE FORMS - 1 1/2" MIN
01 11 18B	INSULATING CONCRETE FORMS - 1 1/2" MIN
01 11 18C	INSULATING CONCRETE FORMS - 1 1/2" MIN
01 11 18D	INSULATING CONCRETE FORMS - 1 1/2" MIN
01 11 18E	INSULATING CONCRETE FORMS - 1 1/2" MIN
01 11 18F	INSULATING CONCRETE FORMS - 1 1/2" MIN
01 11 18G	INSULATING CONCRETE FORMS - 1 1/2" MIN
01 11 18H	INSULATING CONCRETE FORMS - 1 1/2" MIN
01 11 18I	INSULATING CONCRETE FORMS - 1 1/2" MIN
01 11 18J	INSULATING CONCRETE FORMS - 1 1/2" MIN
01 11 18K	INSULATING CONCRETE FORMS - 1 1/2" MIN
01 11 18L	INSULATING CONCRETE FORMS - 1 1/2" MIN
01 11 18M	INSULATING CONCRETE FORMS - 1 1/2" MIN
01 11 18N	INSULATING CONCRETE FORMS - 1 1/2" MIN
01 11 18O	INSULATING CONCRETE FORMS - 1 1/2" MIN
01 11 18P	INSULATING CONCRETE FORMS - 1 1/2" MIN
01 11 18Q	INSULATING CONCRETE FORMS - 1 1/2" MIN
01 11 18R	INSULATING CONCRETE FORMS - 1 1/2" MIN
01 11 18S	INSULATING CONCRETE FORMS - 1 1/2" MIN
01 11 18T	INSULATING CONCRETE FORMS - 1 1/2" MIN
01 11 18U	INSULATING CONCRETE FORMS - 1 1/2" MIN
01 11 18V	INSULATING CONCRETE FORMS - 1 1/2" MIN
01 11 18W	INSULATING CONCRETE FORMS - 1 1/2" MIN
01 11 18X	INSULATING CONCRETE FORMS - 1 1/2" MIN
01 11 18Y	INSULATING CONCRETE FORMS - 1 1/2" MIN
01 11 18Z	INSULATING CONCRETE FORMS - 1 1/2" MIN
01 11 19A	INSULATING CONCRETE FORMS - 1 1/2" MIN
01 11 19B	INSULATING CONCRETE FORMS - 1 1/2" MIN
01 11 19C	INSULATING CONCRETE FORMS - 1 1/2" MIN
01 11 19D	INSULATING CONCRETE FORMS - 1 1/2" MIN
01 11 19E	INSULATING CONCRETE FORMS - 1 1/2" MIN
01 11 19F	INSULATING CONCRETE FORMS - 1 1/2" MIN
01 11 19G	INSULATING CONCRETE FORMS - 1 1/2" MIN
01 11 19H	INSULATING CONCRETE FORMS - 1 1/2" MIN
01 11 19I	INSULATING CONCRETE FORMS - 1 1/2" MIN
01 11 19J	INSULATING CONCRETE FORMS - 1 1/2" MIN
01 11 19K	INSULATING CONCRETE FORMS - 1 1/2" MIN
01 11 19L	INSULATING CONCRETE FORMS - 1 1/2" MIN
01 11 19M	INSULATING CONCRETE FORMS - 1 1/2" MIN
01 11 19N	INSULATING CONCRETE FORMS - 1 1/2" MIN
01 11 19O	INSULATING CONCRETE FORMS - 1 1/2" MIN
01 11 19P	INSULATING CONCRETE FORMS - 1 1/2" MIN
01 11 19Q	INSULATING CONCRETE FORMS - 1 1/2" MIN
01 11 19R	INSULATING CONCRETE FORMS - 1 1/2" MIN
01 11 19S	INSULATING CONCRETE FORMS - 1 1/2" MIN
01 11 19T	INSULATING CONCRETE FORMS - 1 1/2" MIN
01 11 19U	INSULATING CONCRETE FORMS - 1 1/2" MIN
01 11 19V	INSULATING CONCRETE FORMS - 1 1/2" MIN
01 11 19W	INSULATING CONCRETE FORMS - 1 1/2" MIN
01 11 19X	INSULATING CONCRETE FORMS - 1 1/2" MIN
01 11 19Y	INSULATING CONCRETE FORMS - 1 1/2" MIN
01 11 19Z	INSULATING CONCRETE FORMS - 1 1/2" MIN
01 11 20A	INSULATING CONCRETE FORMS - 1 1/2" MIN
01 11 20B	INSULATING CONCRETE FORMS - 1 1/2" MIN
01 11 20C	INSULATING CONCRETE FORMS - 1 1/2" MIN
01 11 20D	INSULATING CONCRETE FORMS - 1 1/2" MIN
01 11 20E	INSULATING CONCRETE FORMS - 1 1/2" MIN
01 11 20F	INSULATING CONCRETE FORMS - 1 1/2" MIN
01 11 20G	INSULATING CONCRETE FORMS - 1 1/2" MIN
01 11 20H	INSULATING CONCRETE FORMS - 1 1/2" MIN
01 11 20I	INSULATING CONCRETE FORMS - 1 1/2" MIN
01 11 20J	INSULATING CONCRETE FORMS - 1 1/2" MIN
01 11 20K	INSULATING CONCRETE FORMS - 1 1/2" MIN
01 11 20L	INSULATING CONCRETE FORMS - 1 1/2" MIN
01 11 20M	INSULATING CONCRETE FORMS - 1 1/2" MIN
01 11 20N	INSULATING CONCRETE FORMS - 1 1/2" MIN
01 11 20O	INSULATING CONCRETE FORMS - 1 1/2" MIN
01 11 20P	INSULATING CONCRETE FORMS - 1 1/2" MIN
01 11 20Q	INSULATING CONCRETE FORMS - 1 1/2" MIN
01 11 20R	INSULATING CONCRETE FORMS - 1 1/2" MIN
01 11 20S	INSULATING CONCRETE FORMS - 1 1/2" MIN
01 11 20T	INSULATING CONCRETE FORMS - 1 1/2" MIN
01 11 20U	INSULATING CONCRETE FORMS - 1 1/2" MIN
01 11 20V	INSULATING CONCRETE FORMS - 1 1/2" MIN
01 11 20W	INSULATING CONCRETE FORMS - 1 1/2" MIN
01 11 20X	INSULATING CONCRETE FORMS - 1 1/2" MIN
01 11 20Y	INSULATING CONCRETE FORMS - 1 1/2" MIN
01 11 20Z	INSULATING CONCRETE FORMS - 1 1/2" MIN



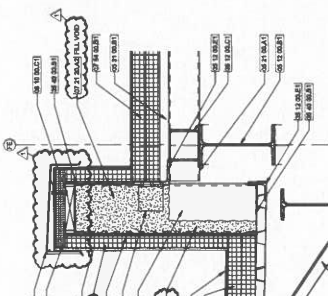
8 COPING DETAIL - BRICK/STUD  
1/8" = 1'-0"



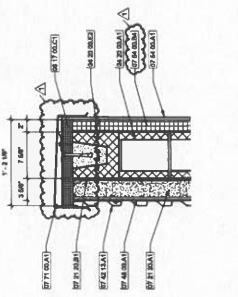
9 COPING DETAIL - BRICK/CMU  
1/8" = 1'-0"



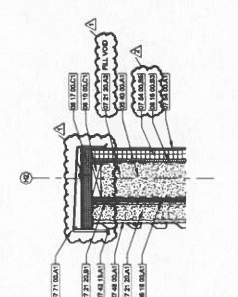
10 COPING DETAIL - BRICK/CF  
1/8" = 1'-0"



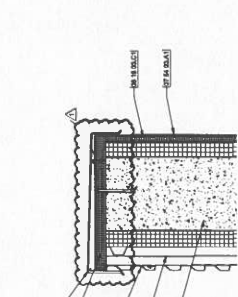
11 ROOF DETAIL  
1/8" = 1'-0"



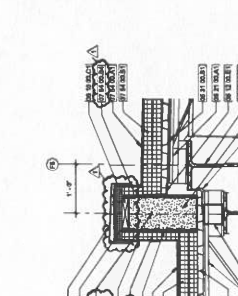
12 COPING DETAIL - F/M/PP/CMU  
1/8" = 1'-0"



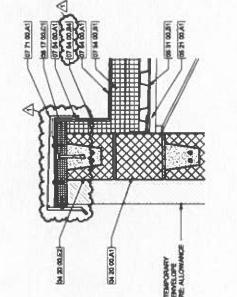
13 COPING DETAIL  
1/8" = 1'-0"



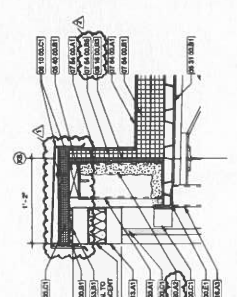
14 ROOF DETAIL  
1/8" = 1'-0"



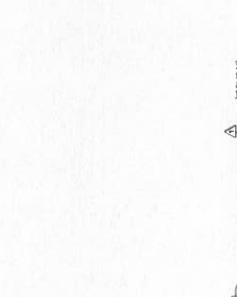
15 ROOF DETAIL  
1/8" = 1'-0"



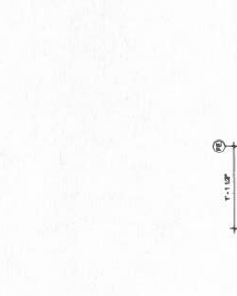
16 COPING DETAIL  
1/8" = 1'-0"



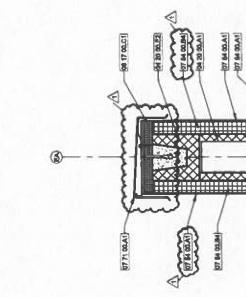
17 COPING DETAIL @ CURTAIN WALL  
1/8" = 1'-0"



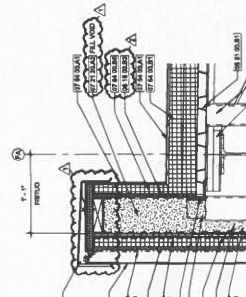
18 ROOF DETAIL  
1/8" = 1'-0"



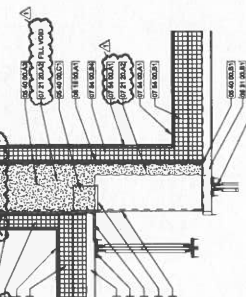
19 ROOF DETAIL  
1/8" = 1'-0"



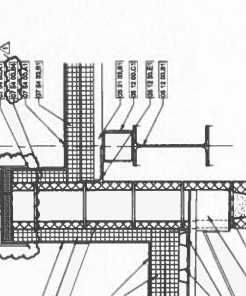
20 ROOF DETAIL  
1/8" = 1'-0"



21 COPING DETAIL - CM/PISTUD  
1/8" = 1'-0"



22 ROOF DETAIL  
1/8" = 1'-0"



23 ROOF DETAIL  
1/8" = 1'-0"

GENERAL NOTE:  
COORDINATE WITH ARCHITECT FOR ALL MATERIALS AND FINISHES.



102 Max Hurt Dr.  
 Murray, KY. 42071  
 (270) 753-5370  
 (270) 753-7504 Fax  
 www.drywallsystemsplus.com

## Change Order Request

01-23-0077 — Hopkinsville Christian Co. Academy

COR Subject: Parapet Sheathing Deduct

To Jacob Taylor  
 Drywall Systems Plus, Inc.

COR Number: 01-23-0077-3  
 COR Revision Number: 0

COR Date: 7/25/2024

Return To Jacob Taylor  
 Drywall Systems Plus, Inc.  
 270-753-5370  
 jacob.t@dwspsc.com

Work Type: Price / Do Not Proceed

Days Valid: 5

### Details

Description	Cost / Rate	Qty / Hrs	Workers	Ext
Sheathing Labor	\$28.80	-32.00 <i>Hrs</i>	1.00	\$-921.60
Parapet Sheathing	(\$1,092.53)	1.00 <i>EACH</i>	-	\$-1,092.53

### Breakout

Labor : (\$921.60)  
 Bond Percent @ 1.5%: (\$13.82)  
 Material : (\$1,092.53)  
 Ins&Tax @ 6%: (\$65.55)  
 Bond Percent @ 1.5%: (\$16.39)  
**Total: (\$2,109.89)**

### Reservation of Rights

This COR does not include any amount for impacts such as interference, disruptions, rescheduling, changes in the sequence of work, delays and/or associated acceleration. We expressly reserve the right to submit our request for any of these items.

Signed By: \_\_\_\_\_

Dated: 7/25/2024

---

**PROPOSAL REQUEST**

---

**Project:** Christian County High School  
5185 Ft. Campbell Blvd  
Hopkinsville, KY 42240

**PR No.:** 019

**Date:** June 19, 2024

**Owner:** Christian County Public Schools  
222 Glass Ave  
Hopkinsville, KY 42240

**Project Number:** 2106-204

**Contract for:**

**To:** Kevin Hitchell  
Alliance Corporation  
116 E. College Steet  
Glasgow, KY 42141

**RE:** Restroom J290 & 291 Ceilings

---

Please submit an itemized quotation for changes in the Contract Sum and/or Time incidental to proposed modifications to the Contract Documents described herein.  
THIS IS NOT A CHANGE ORDER NOR A DIRECTION TO PROCEED WITH THE WORK DESCRIBED HEREIN.

---

**Description:**

1. In Women's J290 and Men's J291 Delete gyp board ceiling above toilet stalls. Extend lay-in ceiling throughout restrooms, similar to other academy student restroom ceilings.

**Attachments:** na

**By:** Eric Rang

**CC:**





102 Max Hurt Dr.  
 Murray, KY. 42071  
 (270) 753-5370  
 (270) 753-7504 Fax  
 www.drywallsystemsplus.com

## Change Order Request

01-23-0077 — Hopkinsville Christian Co. Academy

COR Subject: PR-20

**To** Jacob Taylor  
 Drywall Systems Plus, Inc.

**COR Number:** 01-23-0077-1  
**COR Revision Number:** 0

COR Date: 6/28/2024  
 Work Type: Price / Proceed  
 Days Valid: 5

**Return To** Jacob Taylor  
 Drywall Systems Plus, Inc.  
 270-753-5370  
 jacob.t@dvspinc.com

### Details

Description	Cost / Rate	Qty / Hrs	Workers	Ext
Framing Labor	\$28.80	-29.00 <i>Hrs</i>	1.00	\$-835.20
Drywall Labor	\$28.80	-19.00 <i>Hrs</i>	1.00	\$-547.20
Framing Material	(\$375.16)	1.00 <i>EACH</i>	-	\$-375.16
Drywall Material	(\$233.71)	1.00 <i>EACH</i>	-	\$-233.71

### Breakout

Labor : (\$1,382.40)  
 Bond Percent @ 1.5%: (\$20.74)  
 Material : (\$608.87)  
 Ins&Tax @ 6%: (\$36.53)  
 Bond Percent @ 1.5%: (\$9.13)  
**Total: (\$2,057.67)**

### Reservation of Rights

This COR does not include any amount for impacts such as interference, disruptions, rescheduling, changes in the sequence of work, delays and/or associated acceleration. We expressly reserve the right to submit our request for any of these items.

**Signed By:** \_\_\_\_\_

**Dated:** 6/28/2024

# FACPAC Contract Change Order Supplemental Information Form (Ref# 60497)

Form Status: Saved

Tier 1 Project: Consolidated High School

BG Number: 22-104

Status: Active

District: Christian County (HB678) (115)

Phase: Project Initiation (View Checklist)

Contract: Drywall Systems, Inc. , 0092, Gyp Board Assemblies

Type: CM Bid Package

Proposed

Change Order Number	1
Time Extension Required	No
Date Of Change Order	8/7/2024
Change Order Amount To Date	Decrease

## Construction Contingency

Calculations below are project wide. Remaining negative Construction Contingency may require the submission of a revised BG1.

Current Approved Amount	\$6,320,436.60
Net Approved COs	\$365,699.78
Remaining After Approved COs	\$5,954,736.82
Net All COs	\$386,909.24
Remaining After All COs	\$5,933,527.36

This Requested Change Order Amount (\$4,167.56)

+/-

Change In A/E Fee This Change Order

+/-

Change In CM Fee This Change Order \$0.00

+/-

Remaining Construction Contingency \$5,933,527.36

Balance

Contract Change Requested By Architect/Engineer; Contractor

Contract Change Reason Code Reduction of Scope

Change Order Description And Justification

Deduct sheathing at roof parapets per PR #17. Deduct gypsum board at restroom ceilings per PR #19.

Cost Benefit To Owner

This will result in a cost savings to the owner.

Contract unit prices have been utilized No  
to support the cost associated with this

change order.

## Detailed Cost Breakdown

Contract unit prices have not been utilized, provide a detailed cost breakdown which separates labor, material, profit and overhead.

---

<b>Detail Item</b>	<b>Amount</b>	<b>Percent of Total</b>
Labor	(\$2,304.00)	55.28%
Materials	(\$1,701.40)	40.82%
Profit and Overhead	(\$102.08)	2.45%
Bond Insurance	(\$60.08)	1.44%
<b>Cost Breakdown Total:</b>	<b>\$-4,167.56</b>	

Cost for this Change Order supported by an alternate bid or competitive price quote

Explain Why

Executed contract with contractor.



# Change Order Supplemental Information Form Signature Page (Online Form Ref# 60497)

---

Architect

---

Date

---

Construction Manager

---

Date

---

Finance Officer

---

Date

---

Local Board of Education Designee

---

Date