

DATE:

02/22/2024

AGENDA ITEM (ACTION ITEM):

Consider / Approve the construction documents for the Central Office construction project (BG 24-084).

APPLICABLE BOARD POLICY:

01.1 Legal Status of the Board; 04.31 Authority to Encumber and Expend Funds; 702 KAR 4:050 Building Sites; Inspection and Approval

HISTORY/BACKGROUND:

The construction documents (CD) for the Central Office construction project reflects the input of the KCS D team, designers from Emboss Design, and various engineering groups. The CD documents will serve as the basis for the project bid process. It is anticipated for bidding to begin in early March 2024, a bid award to be recommended to the Board in April, and construction to begin mid-May 2024 should a successful bidder be selected and approved by the Board. This timeline allows for substantial project completion in September, 2025. The plans are reflective of the evolutionary design process starting with the schematic design that was initially approved on September 11, 2023.

FISCAL/BUDGETARY IMPACT:

All design costs are included in the total cost of the construction project as specified in the revised BG-1 approved on January 8, 2024.

RECOMMENDATION:

Approve the construction documents for the Central Office construction project (BG 24-084).

CONTACT PERSON:

Matt Rigg, Chief Operations Officer

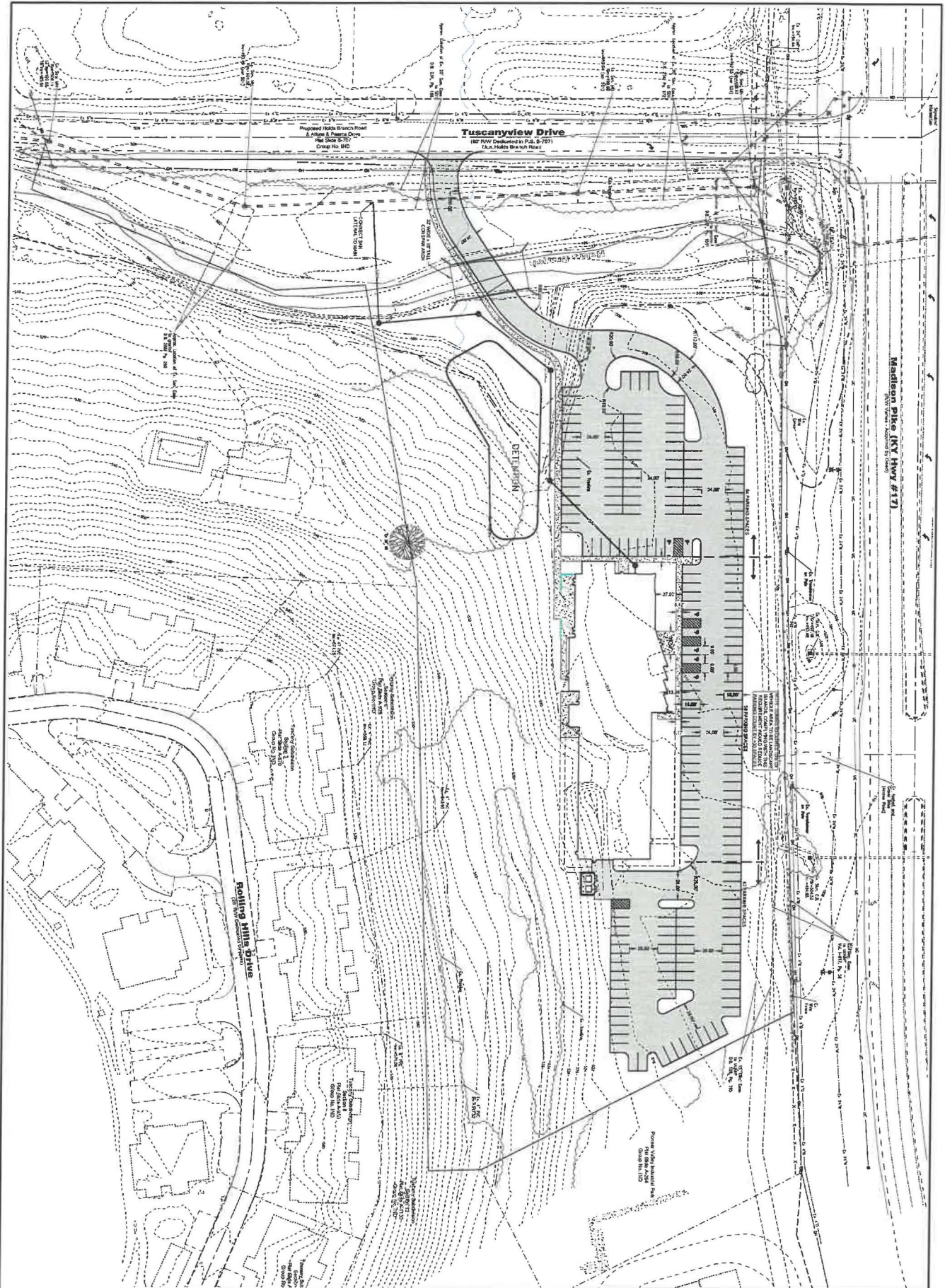
Principal/Administrator



District Administrator

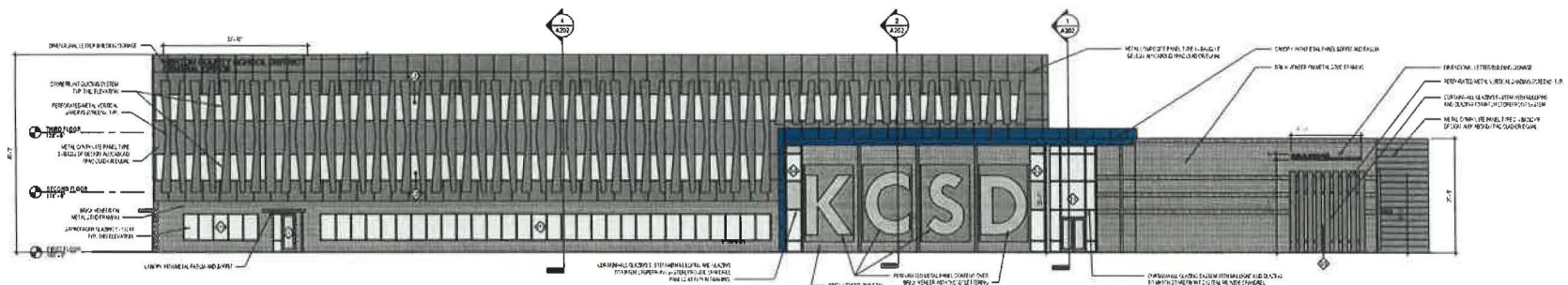


Superintendent



<p>DATE: 11/27/23 TIME: 10:38 AM PLOT: 100%</p>	<p>bayer becker www.bayerbecker.com 255 Catalina Drive Fort Mitchell, KY 41017 - 858.261.1113</p>	<p>KENTON COUNTY SCHOOLS MADISON PIKE (KY-17) & TUSCANYVIEW DRIVE CITY OF COVINGTON KENTON COUNTY, COMMONWEALTH OF KENTUCKY SITE LAYOUT</p>	<table border="1" style="width: 100%; border-collapse: collapse;"> <thead> <tr> <th>Item</th> <th>Revision Description</th> <th>Date</th> <th>Drawn</th> <th>CHK</th> </tr> </thead> <tbody> <tr> <td colspan="5" style="text-align: center; color: red; font-weight: bold;">PRELIMINARY</td> </tr> <tr> <td> </td> <td> </td> <td> </td> <td> </td> <td> </td> </tr> </tbody> </table>	Item	Revision Description	Date	Drawn	CHK	PRELIMINARY										
Item	Revision Description	Date	Drawn	CHK															
PRELIMINARY																			

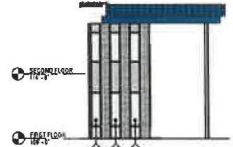
THIS DOCUMENT IS THE PROPERTY OF THE ARCHITECT AND IS TO BE USED ONLY FOR THE PROJECT AND SITE SPECIFICALLY IDENTIFIED HEREIN. IT IS NOT TO BE REPRODUCED, COPIED, OR TRANSMITTED IN ANY FORM OR BY ANY MEANS, ELECTRONIC OR MECHANICAL, INCLUDING PHOTOCOPYING, RECORDING, OR BY ANY INFORMATION STORAGE AND RETRIEVAL SYSTEM, WITHOUT THE WRITTEN PERMISSION OF THE ARCHITECT.



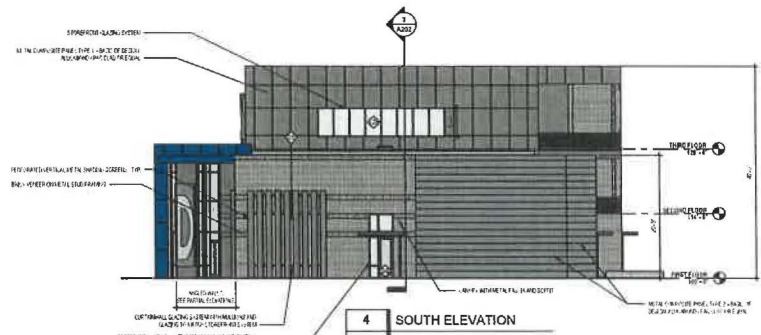
1 WEST ELEVATION
A201 SCALE: 3/32" = 1'-0"



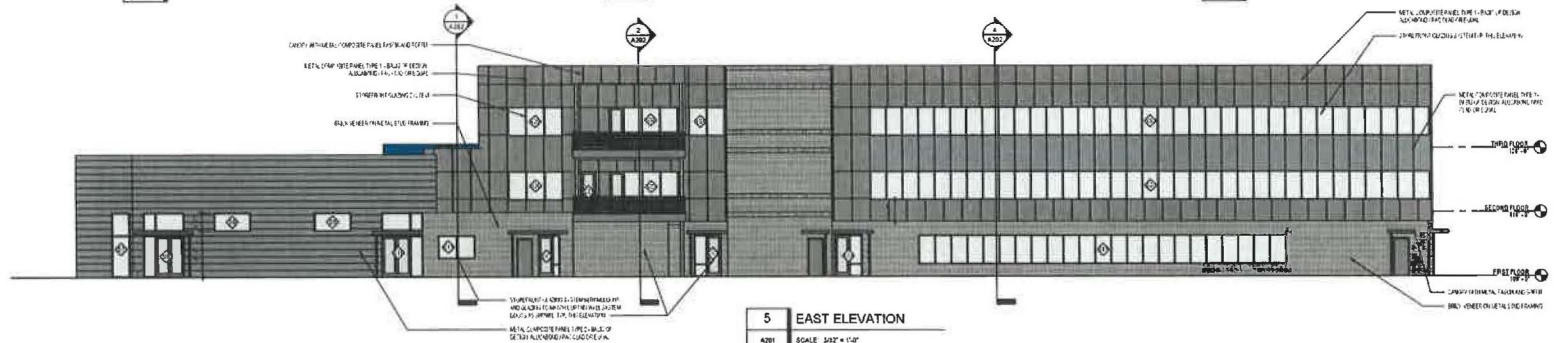
2 PARTIAL ELEVATION
A201 SCALE: 3/32" = 1'-0"



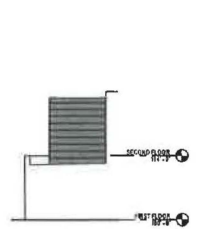
3 PARTIAL ELEVATION
A201 SCALE: 3/32" = 1'-0"



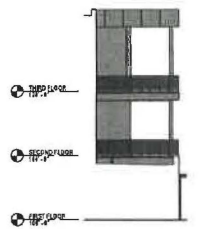
4 SOUTH ELEVATION
A201 SCALE: 3/32" = 1'-0"



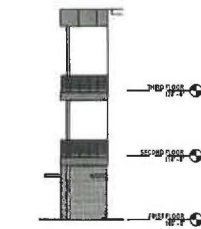
5 EAST ELEVATION
A201 SCALE: 3/32" = 1'-0"



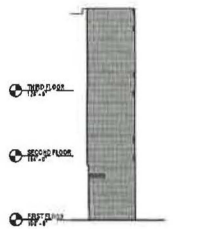
6 PARTIAL ELEVATION
A201 SCALE: 3/32" = 1'-0"



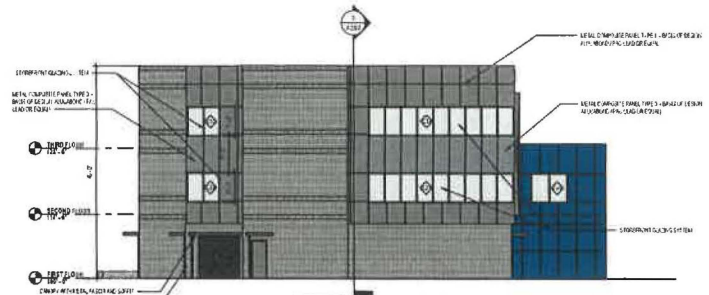
7 PARTIAL ELEVATION
A201 SCALE: 3/32" = 1'-0"



8 PARTIAL ELEVATION
A201 SCALE: 3/32" = 1'-0"



9 PARTIAL ELEVATION
A201 SCALE: 3/32" = 1'-0"



10 NORTH ELEVATION
A201 SCALE: 3/32" = 1'-0"



NOT FOR CONSTRUCTION

**KENTON COUNTY SCHOOL DISTRICT
NEW BOARD OFFICE**
MADISON PIKE & TUSCANYVIEW DRIVE
COWINGTON, KY
BG# 24-004

NO.	DESCRIPTION	DATE
DD	SUBMITTAL	2024-12-14
PP	PROGRESS SET	2024-01-18

EXTERIOR ELEVATIONS

22-106

A201



CARL F. WICKLUND
PROFESSIONAL LEARNING CENTER

KOSD



KEATON COUNTY SCHOOL DISTRICT
CENTRAL OFFICE







