



Issue Paper

DATE:

10/26/2023

AGENDA ITEM (ACTION ITEM):

Consider / Approve the revised schematic design and design development plan for the Central Office and Virtual Learning Center Facility from Emboss Architecture.

APPLICABLE BOARD POLICY:

01.1 Legal Status of the Board; 04.31 Authority to Encumber and Expend Funds; 702 KAR 4:160

HISTORY/BACKGROUND:

The Board of Education approved the schematic design of a new Central Office and Virtual Learning Facility as prepared by Emboss Design at the September 11, 2023 regular board meeting. The schematic design included a basement level to house storage, a classroom, and a production studio. Upon Board approval, Emboss Design presented the schematic design to civil engineers who worked to place the building on the District's land. Engineers determined the basement would fall below the 500-year flood plain no matter how it was positioned on the land and advised considering removal of the basement to avoid the flood plain. Emboss has prepared a revised schematic design eliminating the basement and moving all spaces originally designed to be in the basement throughout the remainder of the building.

FISCAL/BUDGETARY IMPACT:

Estimated base construction cost of the building reduced by \$1.1 million

RECOMMENDATION:

Approve the revised schematic design and design development plan for the Central Office and Virtual Learning Center Facility from Emboss Design.

CONTACT PERSON:

Matt Rigg, Chief Operations Officer

Principal/Administrator



District Administrator



Superintendent

*Use this form to submit your request to the Superintendent for items to be added to the Board Meeting Agenda
Principal – Complete, print, sign and send to your Director. Director – if approved, sign and put in the Superintendent's mailbox*



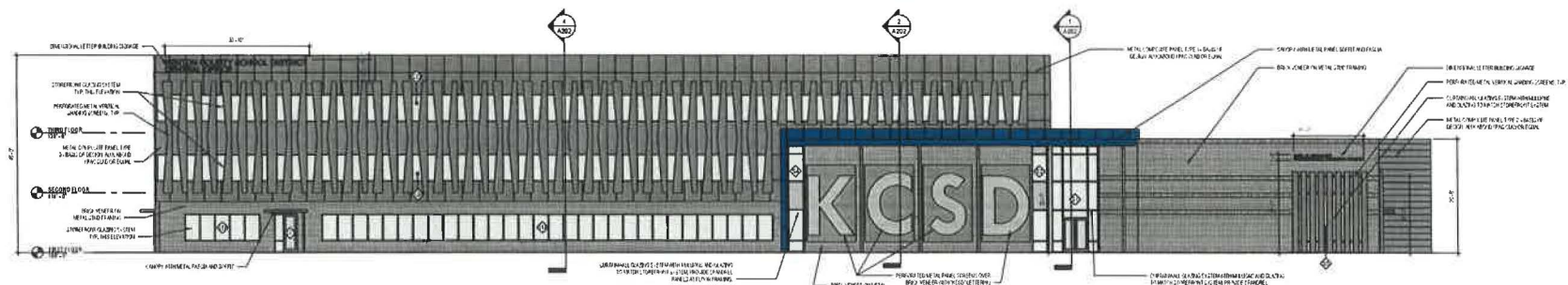
bayer becker
 www.bayerbecker.com
 200 Calandreville Drive
 Fort Mitchell, KY 41017 - 859.261.1113

KENTON COUNTY SCHOOLS
 MADISON PIKE (KY-17) & TUSCANYVIEW DRIVE
 CITY OF COVINGTON
 KENTON COUNTY, COMMONWEALTH OF KENTUCKY
 SITE LAYOUT

Item	Revision Description	Date	Drawn	CHK
PRELIMINARY				

Scale: 1" = 20'

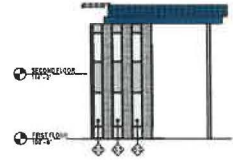
THE CITY OF KY. HAS REVIEWED AND APPROVED THE ARCHITECTURAL DRAWINGS OF THIS PROJECT. THE CITY OF KY. HAS REVIEWED AND APPROVED THE ARCHITECTURAL DRAWINGS OF THIS PROJECT. THE CITY OF KY. HAS REVIEWED AND APPROVED THE ARCHITECTURAL DRAWINGS OF THIS PROJECT.



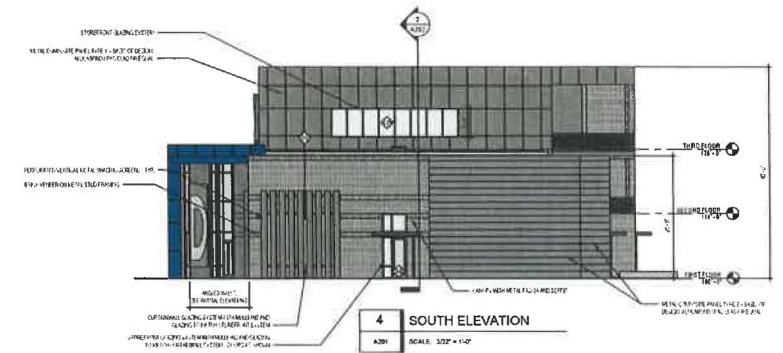
1 WEST ELEVATION
A201 SCALE: 3/32" = 1'-0"



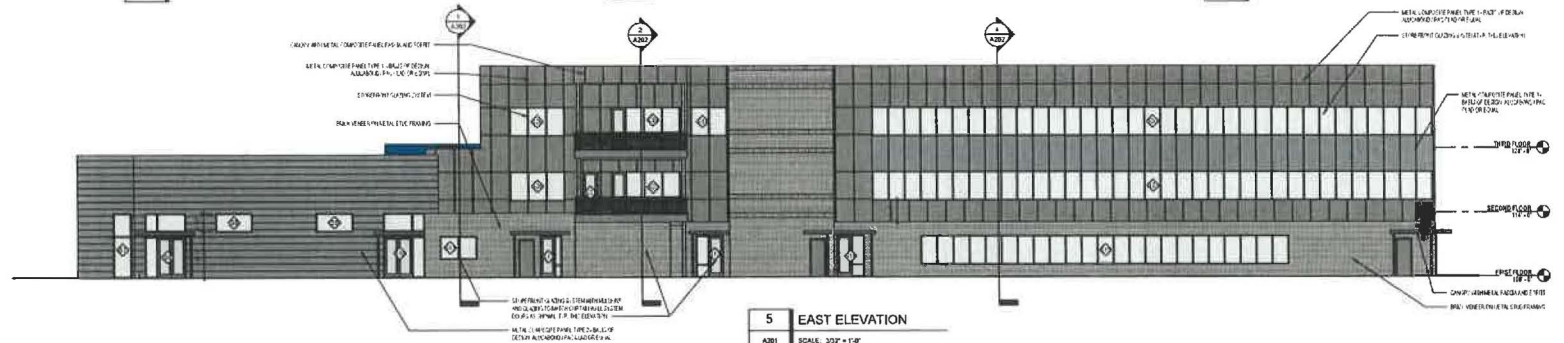
2 PARTIAL ELEVATION
A201 SCALE: 3/32" = 1'-0"



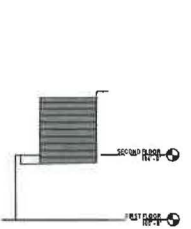
3 PARTIAL ELEVATION
A201 SCALE: 3/32" = 1'-0"



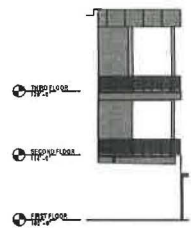
4 SOUTH ELEVATION
A201 SCALE: 3/32" = 1'-0"



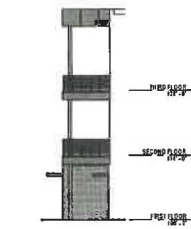
5 EAST ELEVATION
A201 SCALE: 3/32" = 1'-0"



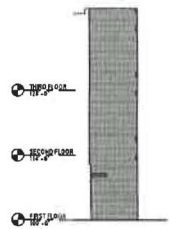
6 PARTIAL ELEVATION
A201 SCALE: 3/32" = 1'-0"



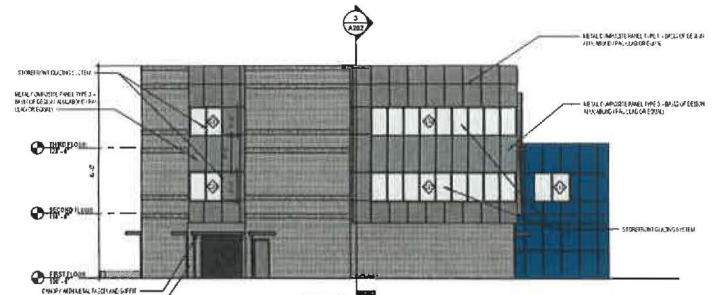
7 PARTIAL ELEVATION
A201 SCALE: 3/32" = 1'-0"



8 PARTIAL ELEVATION
A201 SCALE: 3/32" = 1'-0"



9 PARTIAL ELEVATION
A201 SCALE: 3/32" = 1'-0"



10 NORTH ELEVATION
A201 SCALE: 3/32" = 1'-0"



7000 Park Station, Suite 100, Louisville, KY 40228
605 Monmouth Street, Newport, KY 41071

NOT FOR CONSTRUCTION

**KENTON COUNTY SCHOOL DISTRICT
NEW BOARD OFFICE**
MADISON PIKE & TUSCANYVIEW DRIVE
COVINGTON, KY
BG# 24-024

NO.	DESCRIPTION	DATE
00	SUBMITTAL	2023-10-14
01	PROGRESS SET	2024-01-18

EXTERIOR ELEVATIONS

22-106

A201









