



Kenton County School District | It's about ALL kids.

Issue Paper

DATE:

8/30/2023

AGENDA ITEM (ACTION ITEM):

Consider / Approve the schematic design and design development plan for the Central Office and Virtual Learning Center Facility from Emboss Architecture.

APPLICABLE BOARD POLICY:

01.1 Legal Status of the Board; 04.31 Authority to Encumber and Expend Funds; 702 KAR 4:160

HISTORY/BACKGROUND:

Emboss Architecture, formerly PCA Architecture, has prepared schematic designs associated with the new Central Office and Virtual Learning Facility. The schematic design reflects the proposed construction floor plan, site development, and building elevations.

FISCAL/BUDGETARY IMPACT:

None

RECOMMENDATION:

Approve the schematic design and design development plan for the Central Office and Virtual Learning Center Facility from Emboss Architecture.

CONTACT PERSON:

Matt Rigg, Chief Operations Officer

Principal/Administrator

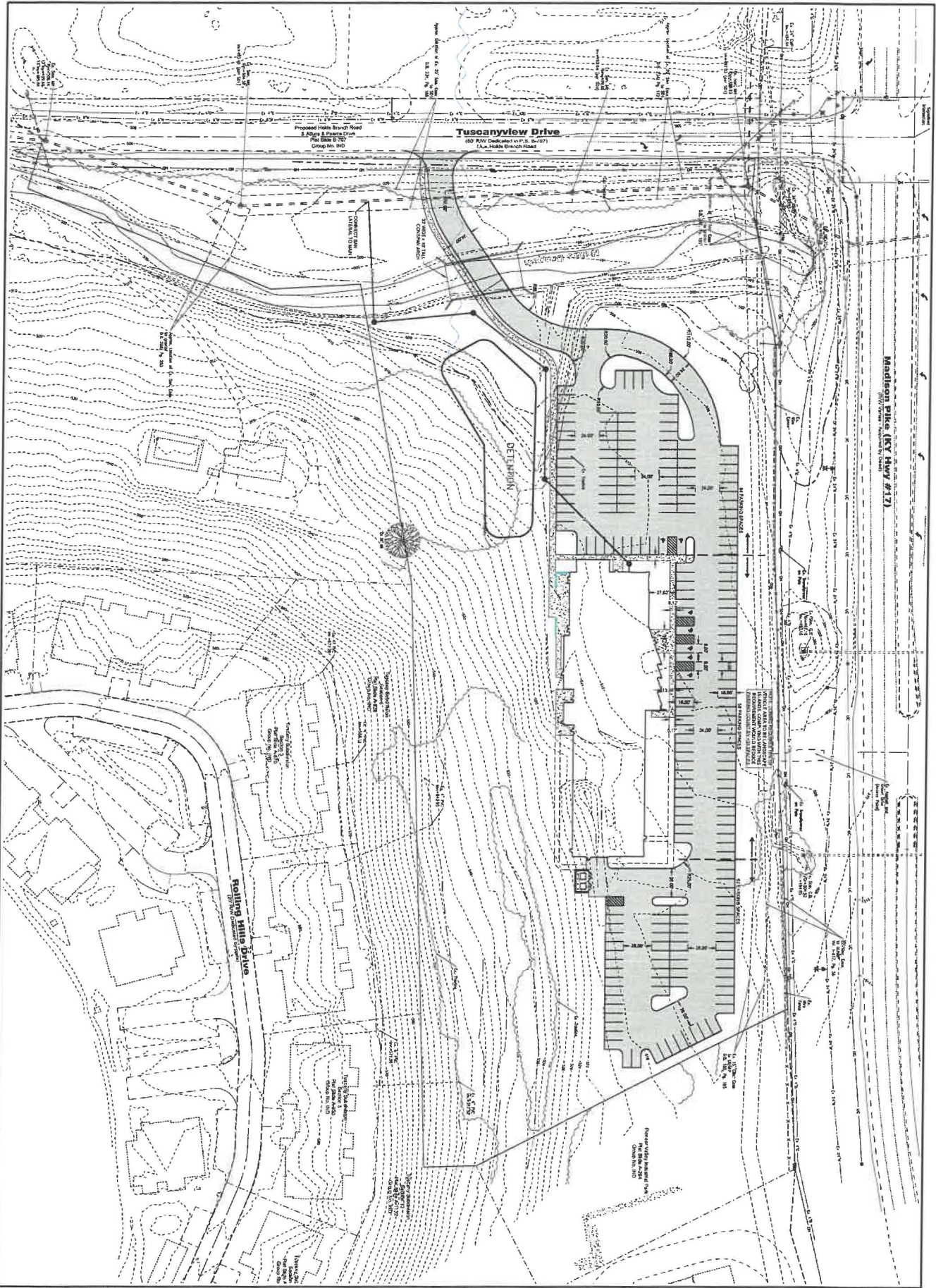


District Administrator



Superintendent

*Use this form to submit your request to the Superintendent for items to be added to the Board Meeting Agenda
Principal – Complete, print, sign and send to your Director. Director – if approved, sign and put in the Superintendent’s mailbox*



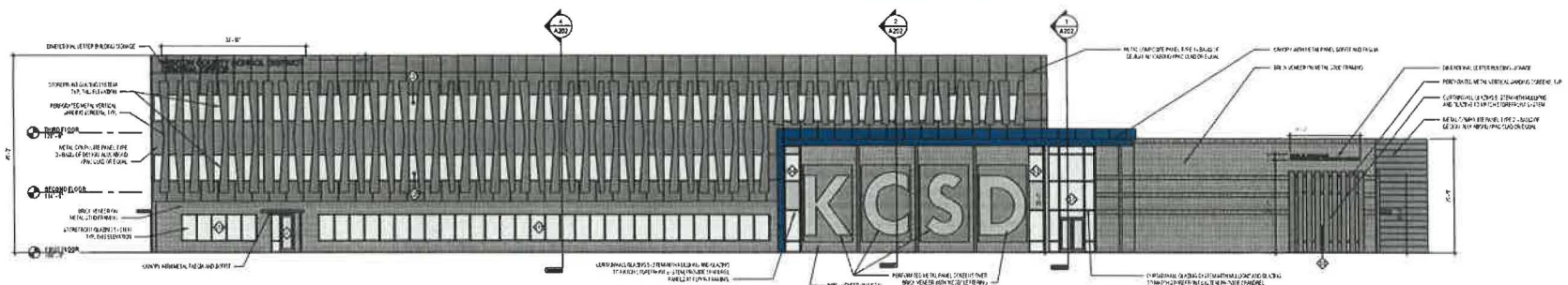

 www.bayerbecker.com
 200 Tuscanview Drive
 Fort Mitchell, KY 41017 - 858.261.1113

KENTON COUNTY SCHOOLS
 MADISON PIKE (KY-17) & TUSCANVIEW DRIVE
 CITY OF COUNTINTON
 KENTON COUNTY, COMMONWEALTH OF KENTUCKY
 SITE LAYOUT

Item	Revision Description	Date	Drawn	Chk
PRELIMINARY				


 Scale: 1" = 100'-0"

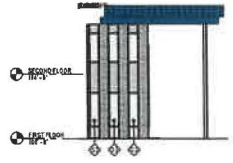

THE CITY OF KENTON HAS REVIEWED THIS PLAN AND FOUND IT TO BE IN ACCORDANCE WITH THE CITY OF KENTON ZONING ORDINANCE AND THE KENTON COUNTY BOARD OF HEALTH ORDINANCES. HOWEVER, THE CITY OF KENTON DOES NOT GUARANTEE THE ACCURACY OF THE INFORMATION PROVIDED HEREON. THE CITY OF KENTON IS NOT RESPONSIBLE FOR ANY ERRORS OR OMISSIONS IN THIS PLAN. THE CITY OF KENTON IS NOT PROVIDING ANY PROFESSIONAL ENGINEERING OR ARCHITECTURAL SERVICES. THE CITY OF KENTON IS NOT PROVIDING ANY PROFESSIONAL ENGINEERING OR ARCHITECTURAL SERVICES. THE CITY OF KENTON IS NOT PROVIDING ANY PROFESSIONAL ENGINEERING OR ARCHITECTURAL SERVICES.



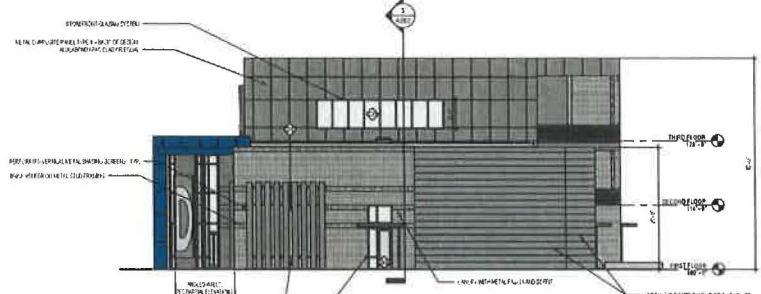
1 WEST ELEVATION
A201 SCALE: 3/32" = 1'-0"



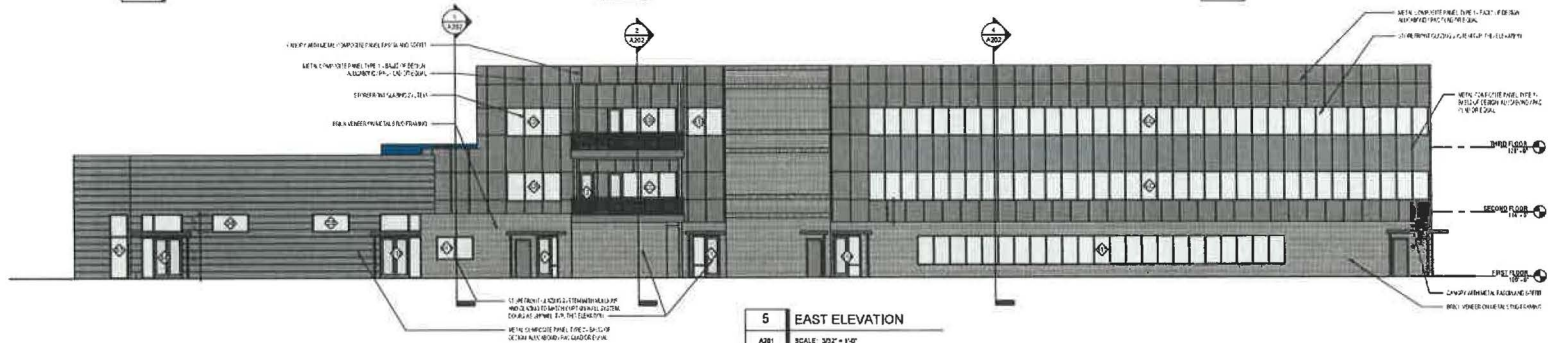
2 PARTIAL ELEVATION
A201 SCALE: 3/32" = 1'-0"



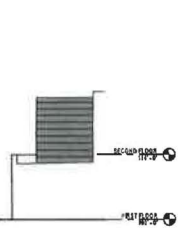
3 PARTIAL ELEVATION
A201 SCALE: 3/32" = 1'-0"



4 SOUTH ELEVATION
A201 SCALE: 3/32" = 1'-0"



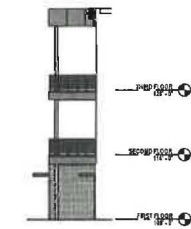
5 EAST ELEVATION
A201 SCALE: 3/32" = 1'-0"



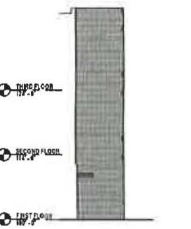
6 PARTIAL ELEVATION
A201 SCALE: 3/32" = 1'-0"



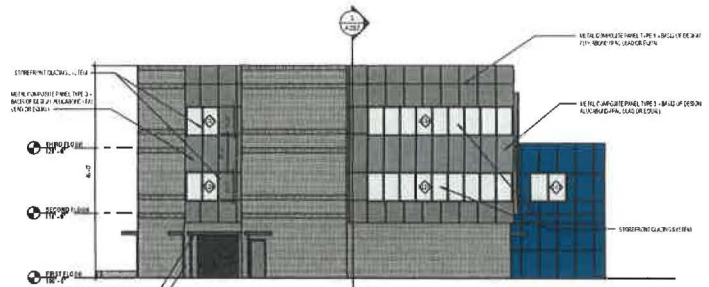
7 PARTIAL ELEVATION
A201 SCALE: 3/32" = 1'-0"



8 PARTIAL ELEVATION
A201 SCALE: 3/32" = 1'-0"



9 PARTIAL ELEVATION
A201 SCALE: 3/32" = 1'-0"



10 NORTH ELEVATION
A201 SCALE: 3/32" = 1'-0"



NOT FOR CONSTRUCTION

**KENTON COUNTY SCHOOL DISTRICT
NEW BOARD OFFICE**
MADISON PIKE & TUSCANYVIEW DRIVE
COVINGTON, KY
BG# 24-084

NO.	DESCRIPTION	DATE
DD	SUBMITTAL	2024-12-14
PP	PROGRESS SET	2024-01-18

EXTERIOR ELEVATIONS

22-108

A201









