

DATE:

9/22/2022

AGENDA ITEM (ACTION ITEM):

Consider / Approve the schematic design and design development plan for the Transportation-Facility Maintenance Campus from GRW Architectural and Engineering Firm.

APPLICABLE BOARD POLICY:

01.1 Legal Status of the Board; 04.31 Authority to Encumber and Expend Funds; 702 KAR 4:160

HISTORY/BACKGROUND:

GRW Architectural and Engineering Firm has prepared schematic designs associated with the Transportation-Facility Maintenance Campus. The schematic design reflects the proposed construction floor plan, site development, and building elevations.

FISCAL/BUDGETARY IMPACT:

None

RECOMMENDATION:

Approve the schematic design and design development plan for the Transportation-Facility Maintenance Campus from GRW Architectural and Engineering Firm.

CONTACT PERSON:

Rob Haney, Chief Operations Officer

Principal/Administrator

Rob Haney

District Administrator

[Signature]

Superintendent

Use this form to submit your request to the Superintendent for items to be added to the Board Meeting Agenda

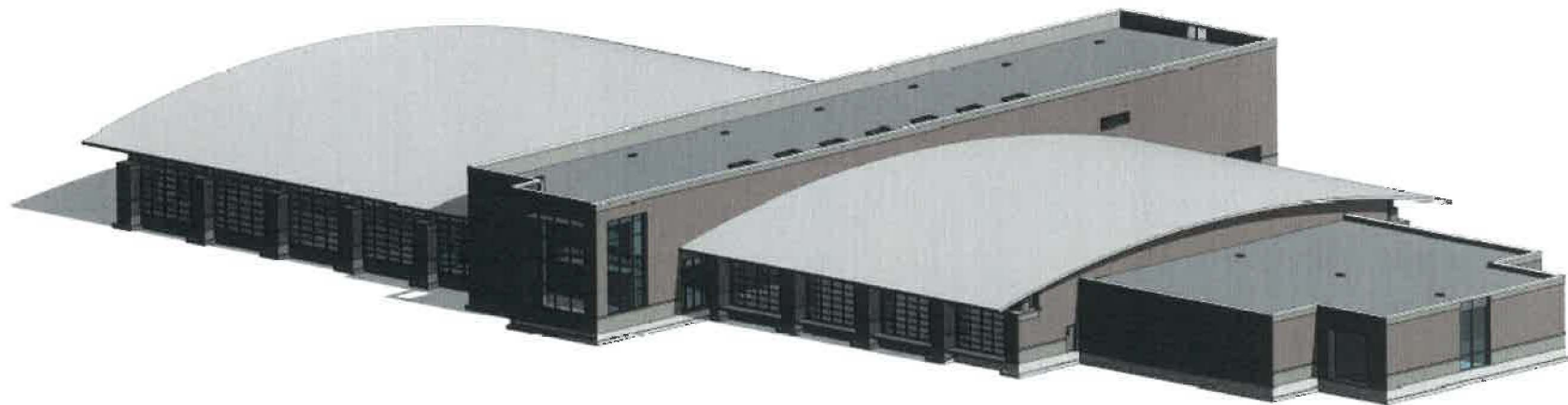
Principal – Complete, print, sign and send to your Director. Director – if approved, sign and put in the Superintendent's mailbox

DESIGN DEVELOPMENT

KENTON COUNTY DISTRICT SUPPORT FACILITY

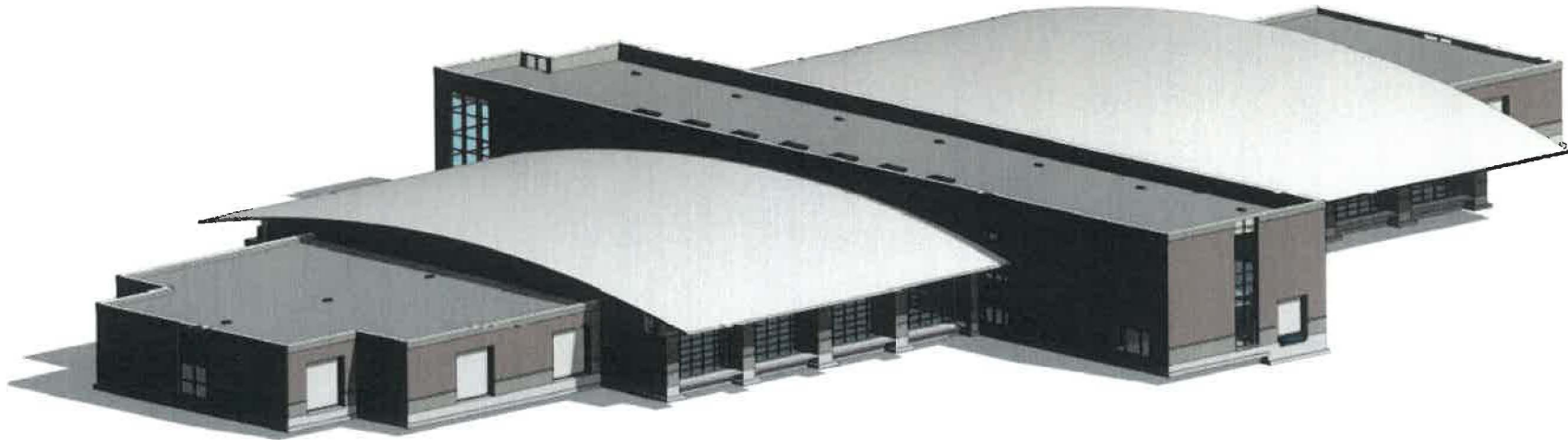
11800 TAYLOR MILL ROAD, INDEPENDENCE KY, 41051

DECEMBER 2, 2022



ENGINEERING ARCHITECTURE & CONSTRUCTION, INC.
www.grwinc.com

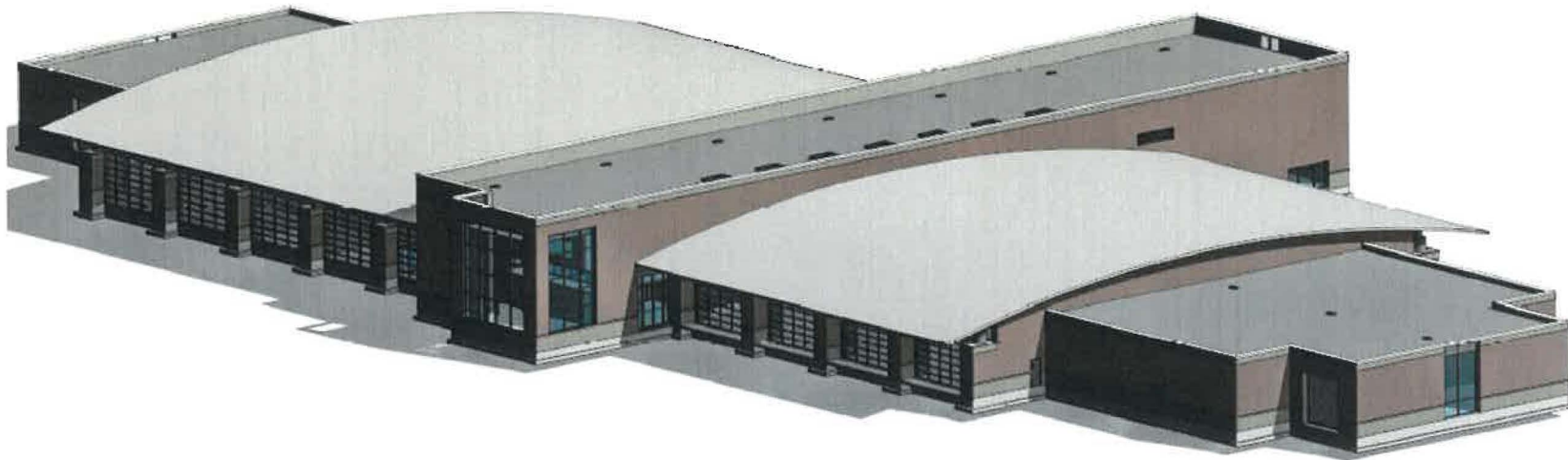
GRW PROJECT NO. 05056-01



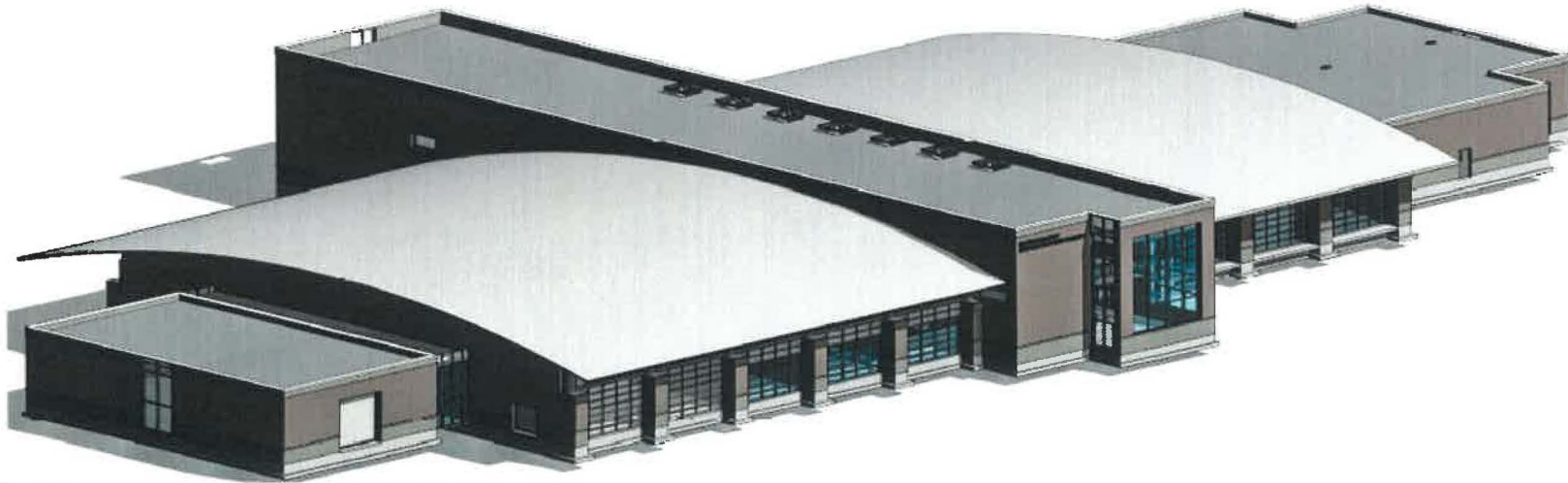
1 ISOMETRIC VIEW - NORTHEAST ADD ALTERNATE ONE



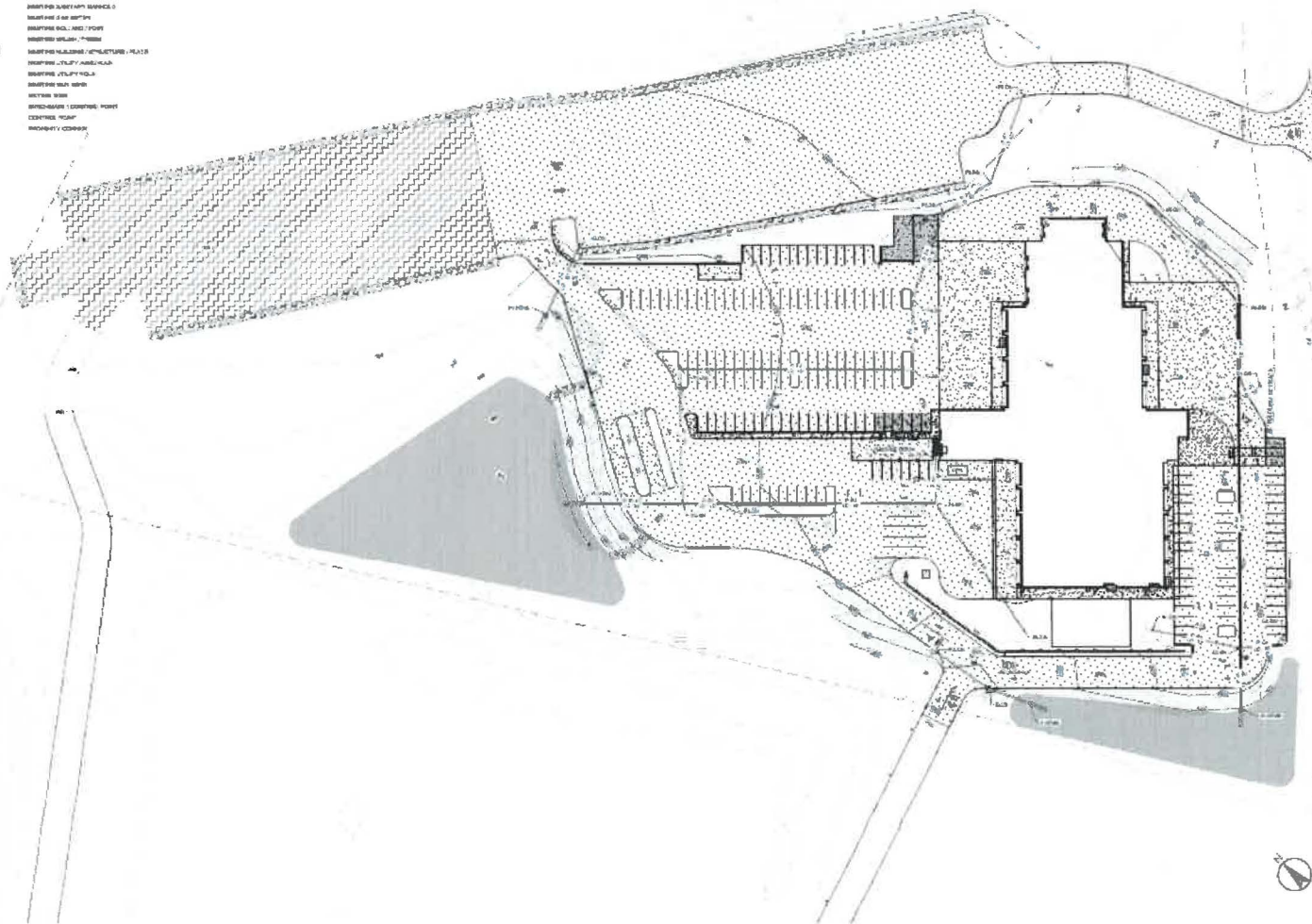
2 ISOMETRIC VIEW - NORTHWEST ADD ALTERNATE ONE



1 ISOMETRIC VIEW - SOUTHEAST ADD ALTERNATE ONE
REV. 12



2 ISOMETRIC VIEW - SOUTHWEST ADD ALTERNATE ONE
REV. 12

[illegible][illegible]

RECEIVED DIRECTOR, FBI
JAN 14 1964



GRADING AND STORMWATER PLAN
KENTON COUNTY DISTRICT SUPPLY FACILITY
1800 TAYLOR MILL ROAD INDEPENDENCE KY. 41051

