



Board Report

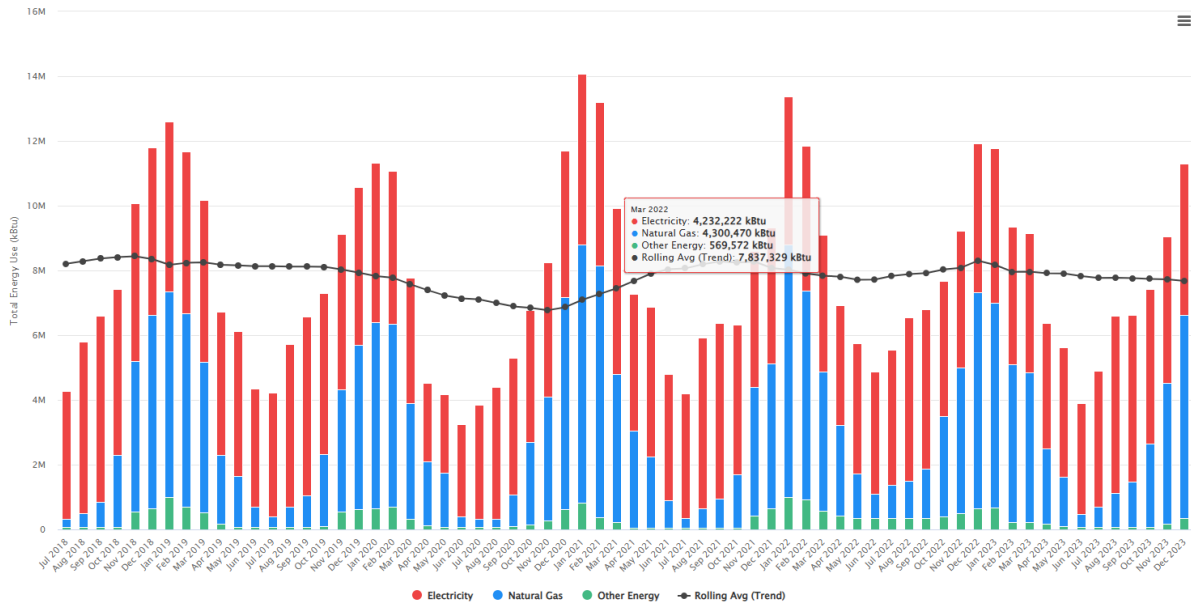
Update on the Transition to the new Energy Management Information System

The transition from the old system (Energy Manager) to the new system, the AEM Console is a two-month process. The status of the project’s deliverables is listed in the table below. The following two pages contain screenshots of the new AEM Console with KCS D’s utility information.

Deliverables	Month Completed		
	July	August	September
Transfer Energy Manager Database to Console	X		
<i>Utility Invoice Data (2010 to present)</i>			
<i>15-minute Interval Data (2014 to present)</i>			
Verify the Quality of Data Transfer	X	X	
Sync Console Monthly Invoice Data with ESTAR Portfolio Manager		X	
Establish and Implement Process for Monthly Utility Bill Maintenance		X	
Establish and Implement Process for Daily 15-minute Interval Data Maintenance	X		
Create Monthly Reports for Utility Invoice Data		X	
<i>Energy Management</i>			
<i>Board Performance</i>			
Establish and Implement Process for Weekly 15-minute Interval Data Reports	X		
Create and Deliver Weekly Energy Performance to Building Managers		X	
Go Live with AEM Console		X	X

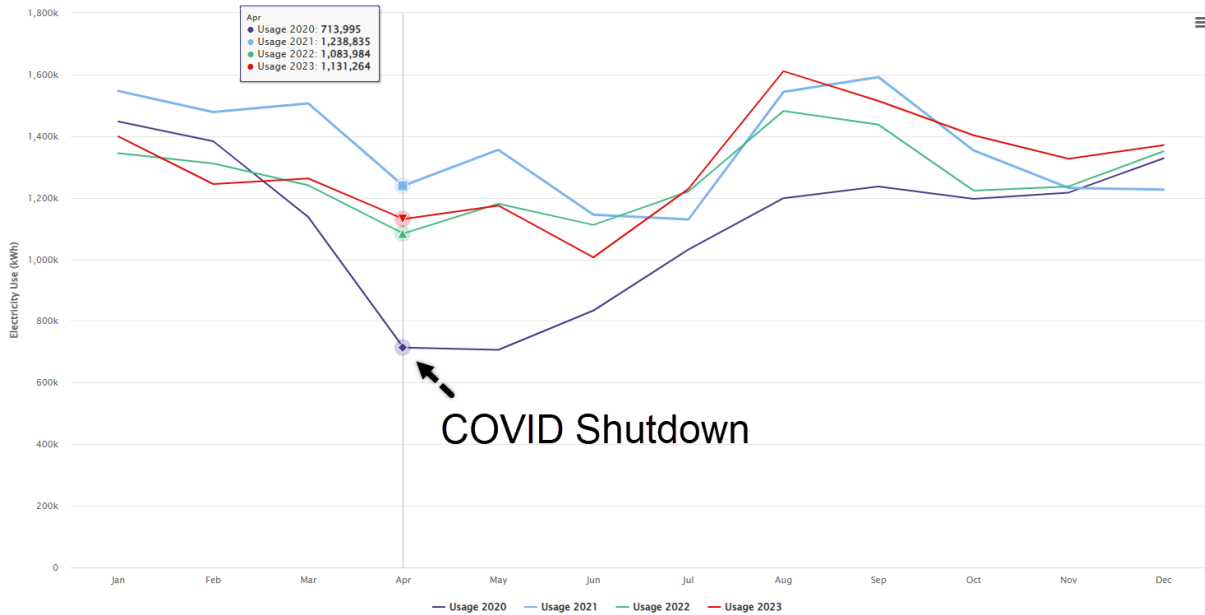
Energy Management
Building Managers
District Reports

Energy Use Trend (All Facilities)



Highcharts.com

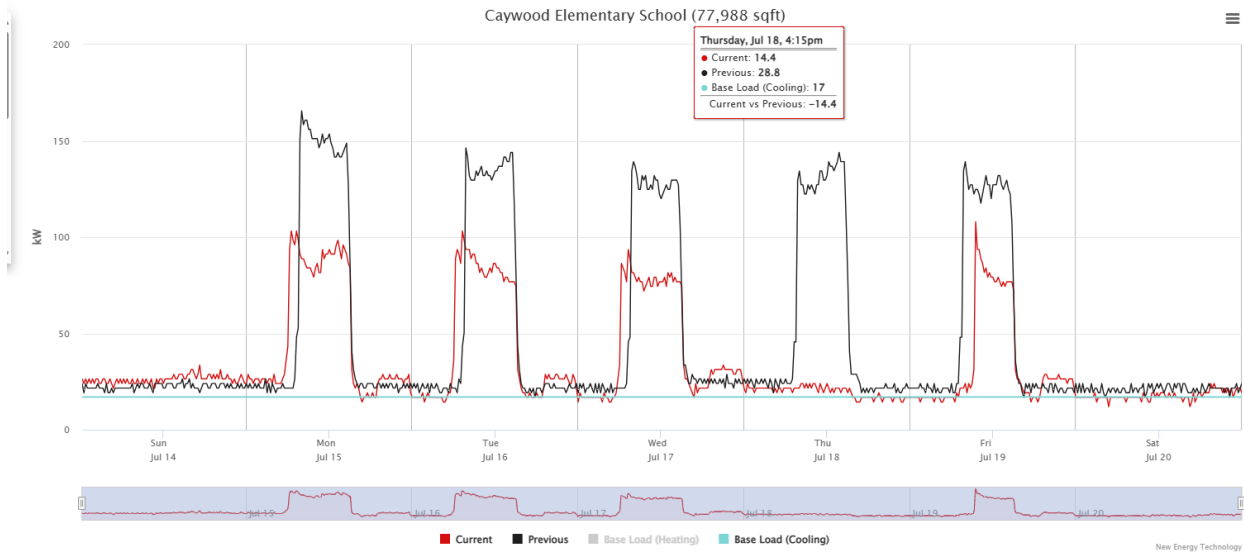
Year over Year Usage Comparison (All Facilities)



Highcharts.com

Interval Data - Single Facility Graph

[FACILITY DETAILS](#)

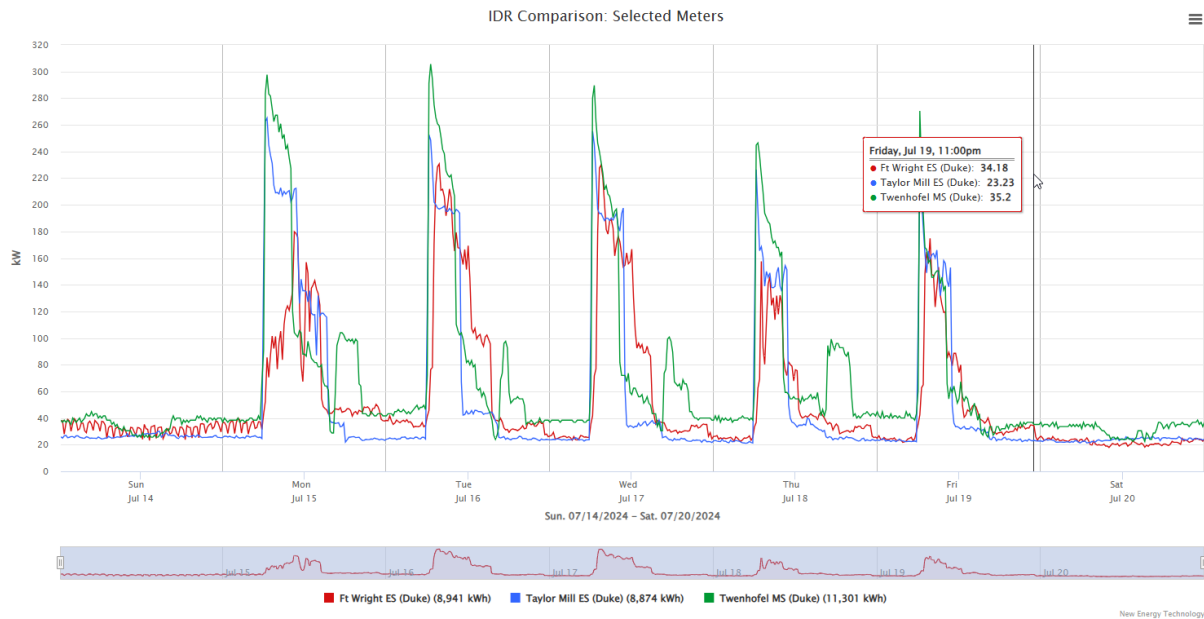


Previous
 Sun. 07/16/2023 - Sat. 07/22/2023
 kWh: 7,948
 Low: 60F, High: 87F

Current vs. Previous: -2,255 kWh for a cost reduction of \$225.50
 Cost is based on \$0.10/kWh

Current
 Sun. 07/14/2024 - Sat. 07/20/2024
 kWh: 5,693
 Low: 55F, High: 93F

Interval Data - Facility/Meter Comparison Graph



■ Ft Wright ES (Duke) (8,941 kWh) ■ Taylor Mill ES (Duke) (8,874 kWh) ■ Twenhofel MS (Duke) (11,301 kWh)

New Energy Technology