

July 22, 2024 UPDATE

NEW WOODFORD COUNTY HIGH SCHOOL



TraceCreek
Construction

Financials

Architect: RossTarrant Architects

Construction Manager: Trace Creek Construction, Inc.

Total Project Cost: \$73,066,931.50

Total Construction Cost to Date : \$61,138,637.58

Total Construction Cost Billed to Date (through June): \$49,543,088.54

% of Contract Completed: 81%

Original Substantial Completion Date: 10/1/2024

Revised Substantial Completion Date: 11/26/2024

Original Final Completion Date: 11/1/2024

Revised Final Completion Date: 12/26/2024



Your Job
Is Our
Reputation

Contingency Log



Original Contingency = \$ 3,016,690.51

NEW WOODFORD COUNTY HIGH SCHOOL CONTINGENCY LOG

17-Jun-24

PROJECT CO #	DESCRIPTION	CO AMT	A/E FEE (5%)	CM FEE (1.7%)	TOTAL	BALANCE TO FINISH	Total Used to Date	\$740,874.99	25%
1	PR 01	\$7,839.39	\$391.96	\$133.26	\$8,364.61	\$ 3,008,325.90			
2	PR 02	\$554,958.54	\$27,747.92	\$14,100.95	\$596,807.41	\$2,411,518.49	Owner Requested	\$ 633,599.43	86%
3	PR's 03 & 05	\$74,324.95	\$1,240.98	\$3,221.92	-\$69,862.65	\$2,481,380.54	CM Requested	\$ (169,780.94)	-23%
4	PR 04	\$37,989.75	\$1,928.33	\$3,455.62	\$43,373.70	\$2,438,006.84	Design Team Requested	\$ 132,524.56	18%
5	PR 9-11	\$29,294.11	\$1,738.37	\$2,924.37	\$33,956.85	\$2,404,049.99	Unforeseen Condition	\$ 144,532.55	20%
6	PR 7,8,12,13,14	\$108,742.30	\$5,584.65	\$3,298.76	\$117,625.71	\$ 2,286,424.28	Totals	\$ 740,875.60	100%
7	PR 16,18,19,20,23,24	-\$13,020.68	\$723.90	\$246.12	-\$12,050.66	\$2,298,474.94			
8	PR 22,25-34,36	-\$57,373.34	\$1,688.88	\$574.20	-\$55,110.26	\$2,353,585.20			
9	PR 37-42	\$109,314.85	\$5,648.89	\$1,920.62	\$116,884.36	\$2,236,700.83			
10	PR 43-47,49-58,60,62	-\$47,242.32	\$6,065.87	\$2,062.38	-\$39,114.08	\$ 2,275,814.91	Note: Additional weather days are only utilized at end of project if necessary.		

FOUNDED
1879
RENOVATED

Building Sequence

AREA C-Ag, Engineering, English, etc..



AREA E- Social Studies,Math,etc...



AREA F- Media,Health,etc..



AREA D- Admin,Lobby,Culinary,Science, etc.



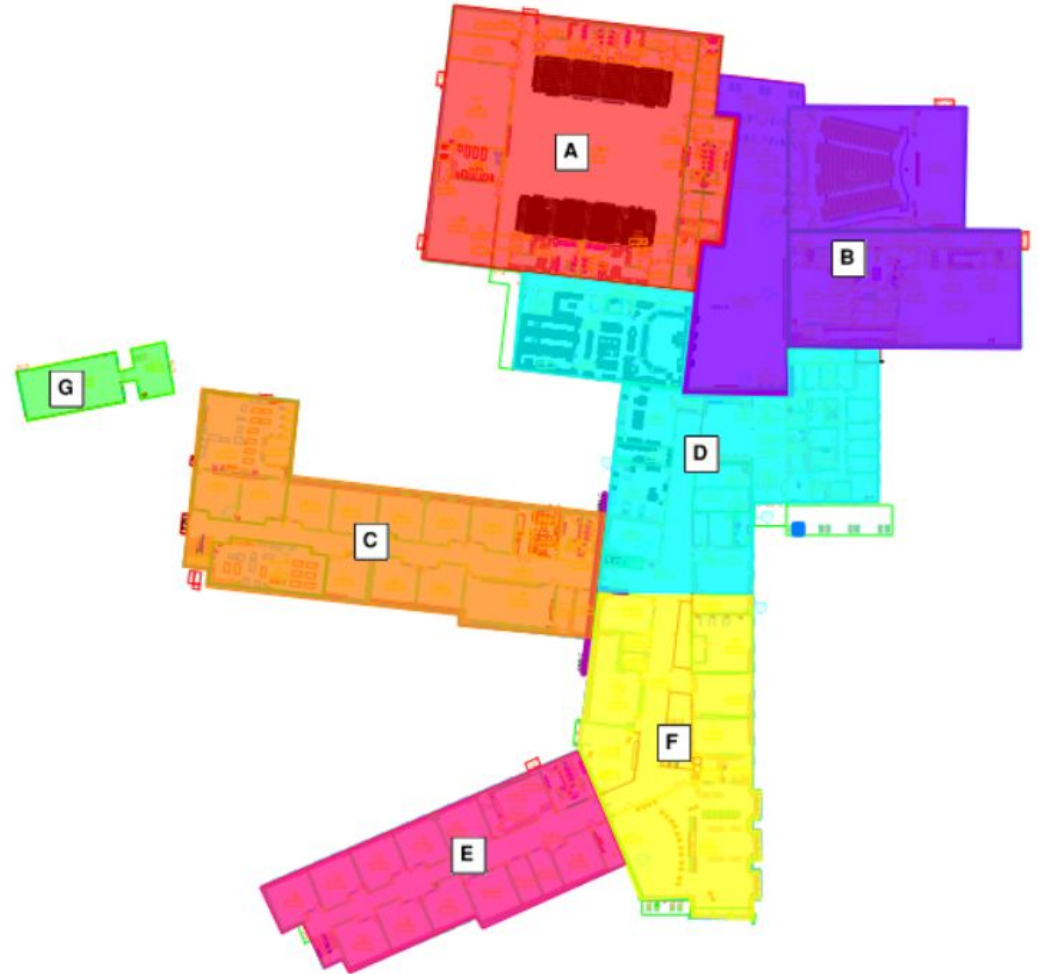
AREA A- Gymnasium



AREA B- Auditorium,SS,Commons/Cafe, etc.



AREA G- Greenhouse



PAST 30 DAY PROGRESS

<u>AREA C</u>	<u>AREA E</u>	<u>AREA F</u>	<u>AREA D</u>	<u>AREA A</u>	<u>AREA B</u>	<u>SITE</u>
Lockers-100%	Final Paint-100%	Insulation/Sheetrock-100%	Metal Stud Framing-100%	Lockers-100%	Metal Soffits-100%	Cooling Tower/Vaults- 90%
Doors/Hardware-90%	Casework-90%	Lockers-100%	Duct/Duct Insulation-100%	Interior Blocking-100%	Electrical Rough-In -90%	Asphalt Base @ Student/Faculty Parking & Tyrone Pike- 90%
Permanent Power (7/23)	Doors/Hardware-90%	Ceiling Grid-100%	Insulation & Sheetrock-100%	Light Fixtures- 10%	Duct -95%	Pre-Cast Benches- 90%
		Duct Insulation-100%				

Your Job Is Our Reputation

30 DAY LOOK-AHEAD
(Completion Items)

<u>AREA C</u>	<u>AREA E</u>	<u>AREA F</u>	<u>AREA D</u>	<u>AREA A</u>	<u>AREA B</u>	<u>SITE</u>
Casework	Casework	Light Fixtures	Hydronic Piping	1st/2nd Floor Electrical Rough-In	1st/2nd Floor Electrical Rough-In	Install Curb/Gutter From Faculty Parking To Dumpster Pad/Greenhouse
Doors/Hardware	Doors/Hardware	Interior Storefront	Exterior Storefront Doors	1st/2nd Floor Wiring	Fire Protection Rough-In	Site Utilities
Mirrors/Visual Displays/Signs/Wall Protection	Mirrors/Visual Displays/Signs/Wall Protection	Final Paint	Tile	Domestic Water Insulation	Duct	
		Start Flooring	Ceiling Grid			

Your Job Is Our Reputation

June-July: Side-By-Side



Your Job Is Our Reputation

East View



YOUR JOB
IS OUR REPUTATION

Your Job Is Our Reputation

North East View



Your Job Is Our Reputation

North-West View



Your Job Is Our Reputation

West View



Your Job Is Our Reputation

Misc.



Tyrone Pike -
School House Rd.
Connection



Gym/Auditorium
Entrance Canopy

Your Job Is Our Reputation

Site Aerial



Your Job Is Our Reputation

Interior Photos: Area C/E
Wood Doors & Casework



Your Job Is Our Reputation

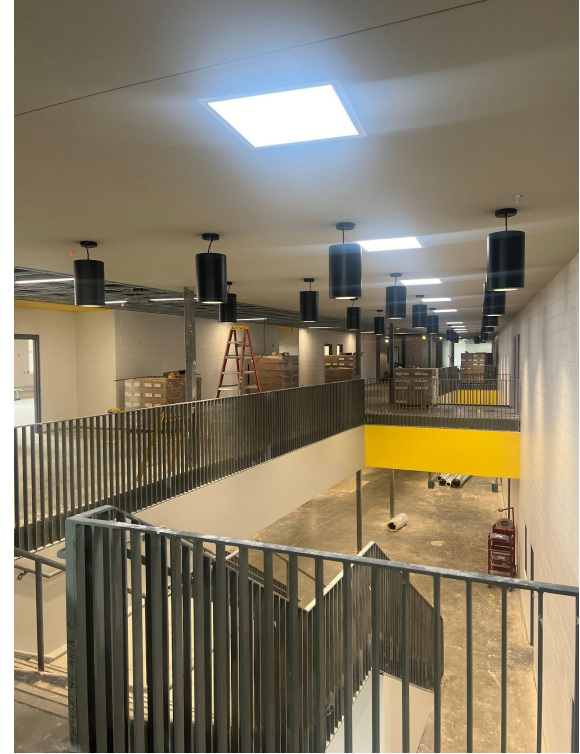
Interior Photos: Area F



1st Floor Corridor



Media Center



2nd Floor Corridor

Your Job Is Our Reputation

Interior Photos: Area D



Culinary



Lobby



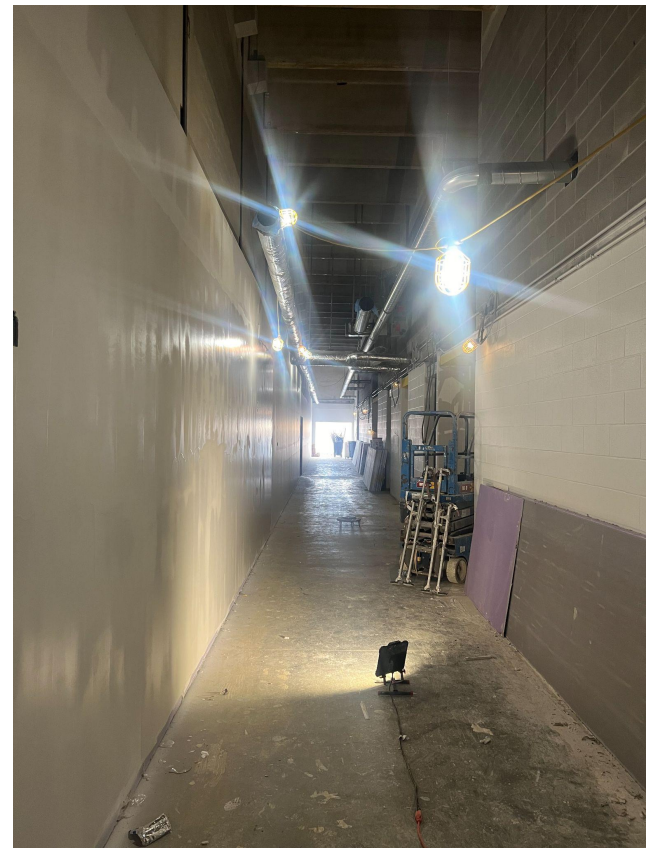
Admin

Your Job Is Our Reputation

Interior Photos: Area B



Auditorium



Storm Shelter Corridor

Your Job Is Our Reputation

Interior Photos: Area A



GYM

Your Job Is Our Reputation

New Woodford County High School- Track & Field: Financials

Architect: RossTarrant Architects

Construction Manager: Trace Creek Construction, Inc.

Total Project Cost: \$4,504,760.00

Total Construction Cost to Date : \$3,661,498.54

Total Construction Cost Billed to Date (through June): \$2,828,220.42

% of Contract Completed: 77%

Original Substantial Completion Date: 3/15/2024


Revised Substantial Completion Date: TBD (on hold for concession/restroom bid)

Original Final Completion Date: 4/15/2024

Revised Final Completion Date: TBD (on hold for concession/restroom bid)



Phase 2:Contingency Log

			WOODFORD COUNTY HIGH SCHOOL PHASE 2 CONTINGENCY LOG					March 25,2024					
			Original Contingency =		\$ 684,002.00								
PROJECT CO #	CONTRACTOR CO #	DESCRIPTION	CO AMT	A/E FEE (5.8%)	CM FEE (4.5%)	TOTAL	BALANCE TO FINISH	NOTES	Total Used to Date	\$			
1	01-01	PR 01 Throws & Dzone	\$ 27,548.05	\$ 1,597.78	\$ 1,239.66	\$ 30,385.49	\$ 653,616.51	Owner Requested	Remaining Contingency	\$ 380,727.11	55.66%		
	02-01	PR 01 Throws & Dzone	\$ (39,556.94)	\$ -	\$ -	\$ (39,556.94)	\$ 693,173.45						
	03-01	PR 01 Throws & Dzone	\$ 87,502.15	\$ 5,075.12	\$ 3,937.59	\$ 96,514.86	\$ 596,658.59						
2	P2-02-03-01	PR 02 Site Utilities	\$ 17,724.00	\$ 1,027.99	\$ 797.58	\$ 19,549.57	\$ 577,109.02	Owner Requested	Owner Requested	\$ 375,113.59	99%		
	02-02	PR 02 Site Utilities	\$ 243,173.73	\$ 14,104.07	\$ 10,942.81	\$ 268,220.61	\$ 308,888.41			CM Requested		0%	
3	02-03	PR 03 Omit RAP from Asphalt	\$ 5,089.33	\$ 295.18	\$ 229.01	\$ 5,613.52	\$ 303,274.89	Design Team Requested	Design Team Requested	\$ 5,613.52	1%		
									Weather Delays		0%		
									Unknown Condition		0%		
									Totals	\$ 380,727.11	100%		
									NOTES: "()" = DEDUCT CO Additional weather days are only utilized at end				

Your Job Is Our Reputation

Past 30 Days

- Installed Track Surface Course
- Prep for rubber surfacing
- High Jump Pad Completed

30 Day Look Ahead

- Complete grading and continue concrete at Long Jump & Pole Vault locations.
- Put concession stand/restroom building out to bid.

Your Job
Is Our
Reputation



Schedule

Task Name	Duration	Baseline Start	Start	Actual Start	Baseline Finish	Finish	Actual Finish
(AREA C) FOOTERS/STEM WALLS	22 days	Mon 12/12/22	Tue 1/24/23	Tue 1/24/23	Wed 1/25/23	Wed 2/22/23	Wed 2/22/23
CMU Installation (Days Added for 2nd Floor Joist Install)	80 days	Fri 1/27/23	Thu 3/9/23	Thu 3/9/23	Thu 4/20/23	Wed 6/28/23	Wed 6/28/23
STEEL- 2nd Floor Erection	9 days	Wed 4/5/23	Mon 4/17/23	Mon 4/17/23	Tue 4/25/23	Thu 4/27/23	Thu 4/27/23
Pour 2nd Floor Slab	2 days	Wed 5/3/23	Tue 5/16/23	Tue 5/16/23	Thu 5/18/23	Wed 5/17/23	Wed 5/17/23
STEEL-Roof Erection	10 days	Fri 5/19/23	Mon 6/26/23	Fri 6/9/23	Fri 6/9/23	Fri 7/7/23	Fri 7/7/23
Cast Stone/Veneer	58 days	Wed 5/10/23	Wed 7/26/23	Wed 7/26/23	Thu 7/27/23	Fri 10/13/23	Fri 10/13/23
PVC Roof System	13 days	Wed 6/14/23	Mon 7/31/23	Mon 7/31/23	Tue 7/11/23	Wed 8/16/23	Wed 8/16/23
Storefront/Windows	15 days	Wed 4/12/23	Mon 10/9/23	Mon 10/9/23	Fri 5/19/23	Fri 10/27/23	Fri 10/27/23
Dried In	0 days	Tue 7/11/23	Fri 10/27/23	Fri 10/27/23	Tue 7/11/23	Fri 10/27/23	Fri 10/27/23
Finish Sheetrock	23 days	Mon 9/11/23	Mon 11/27/23	Mon 11/27/23	Tue 11/7/23	Wed 12/27/23	Wed 12/27/23
Floor Covering	41 days	Fri 12/15/23	Mon 2/26/24	Mon 2/26/24	Wed 2/21/24	Mon 4/22/24	Mon 4/22/24
Storefront Exterior Doors	3 days	NA	Fri 4/19/24	Fri 4/19/24	NA	Tue 4/23/24	Tue 4/23/24
Doors/Hardware	10 days	Thu 2/22/24	Tue 7/9/24	Tue 7/9/24	Wed 3/6/24	Mon 7/22/24	NA
Permanent Power	0 days	Fri 12/15/23	Tue 7/23/24	NA	Fri 12/15/23	Tue 7/23/24	NA
Mirrors/Visual Displays/Signs/CG's	4 days	Wed 2/28/24	Fri 7/26/24	NA	Mon 3/4/24	Wed 7/31/24	NA
(AREA E) Footing/Stemwalls	11 days	Mon 2/20/23	Wed 3/15/23	Wed 3/15/23	Fri 3/24/23	Wed 3/29/23	Wed 3/29/23
Slab Prep/Pour	4 days	Mon 3/6/23	Mon 4/24/23	Mon 4/24/23	Thu 4/6/23	Thu 4/27/23	Thu 4/27/23
CMU Installation (Days Added for 2nd Floor Joist Install)	86 days	Wed 4/19/23	Tue 5/2/23	Tue 5/2/23	Tue 5/30/23	Tue 8/29/23	Tue 8/29/23
STEEL- 2nd Floor Erection	11 days	Wed 4/26/23	Wed 7/5/23	Wed 7/5/23	Fri 5/19/23	Wed 7/19/23	Wed 7/19/23
2nd Floor Slab	1 day	Wed 5/24/23	Fri 7/21/23	Fri 7/21/23	Tue 6/6/23	Fri 7/21/23	Fri 7/21/23
STEEL-Roof Erection	6 days	Wed 6/7/23	Fri 8/25/23	Fri 8/25/23	Fri 6/23/23	Fri 9/1/23	Fri 9/1/23
LWIC Deck System	5 days	Tue 6/20/23	Mon 9/11/23	Mon 9/11/23	Mon 7/10/23	Fri 9/15/23	Fri 9/15/23
PVC Roof System	5 days	Tue 7/4/23	Mon 9/18/23	Mon 9/18/23	Mon 7/24/23	Fri 9/22/23	Fri 9/22/23
Brick Veneer	63 days	Fri 7/14/23	Wed 9/20/23	Wed 9/20/23	Thu 9/7/23	Fri 12/15/23	Fri 12/15/23
Storefront/Windows	7 days	Tue 6/6/23	Mon 12/4/23	Mon 12/4/23	Wed 7/5/23	Tue 1/2/24	Tue 1/2/24
Sheetrock Installation*	20 days	Mon 11/6/23	Mon 12/11/23	Mon 12/11/23	Thu 11/23/23	Fri 1/5/24	Fri 1/5/24
Dried In	1 day	Mon 7/24/23	Tue 1/2/24	Tue 1/2/24	Mon 7/24/23	Tue 1/2/24	Tue 1/2/24
Finish Sheetrock	43 days	Fri 11/24/23	Mon 1/1/24	Mon 1/1/24	Wed 12/13/23	Thu 2/29/24	Thu 2/29/24
Ceiling Grid	3 days	Mon 11/27/23	Mon 2/5/24	Mon 2/5/24	Mon 12/18/23	Mon 2/19/24	Mon 2/19/24
Floor Covering (Start Room 121)	0 days	Fri 12/1/23	Mon 3/11/24	Mon 3/11/24	Fri 12/29/23	Fri 4/19/24	Fri 4/19/24
Storefront Exterior Doors	3 days	NA	Mon 6/3/24	Mon 6/3/24	NA	Wed 6/5/24	Wed 6/5/24
Final Paint	0 days	Fri 1/25/24	Mon 6/10/24	Mon 6/10/24	Fri 2/9/24	Thu 7/18/24	Thu 7/18/24
Doors/Hardware	15 days	Mon 12/18/23	Tue 7/16/24	Tue 7/16/24	Fri 1/5/24	Mon 8/12/24	NA
Mirrors/Visual Displays/Signs/CG's	5 days	Wed 2/7/24	Thu 8/1/24	NA	Tue 2/13/24	Wed 8/7/24	NA

Your Job
Is Our
Reputation

Schedule

Task Name	Duration	Baseline Start	Start	Actual Start	Baseline Finish	Finish	Actual Finish
(AREA F) Footings/Stemwall Slab on Grade	21 days	Fri 1/20/23	Thu 2/23/23	Thu 2/23/23	Thu 2/23/23	Thu 3/23/23	Thu 3/23/23
CMU Installation (Days Added for 2nd Floor Joist Install)	19 days	Mon 2/13/23	Mon 3/27/23	Mon 3/27/23	Fri 3/30/23	Thu 4/20/23	Thu 4/20/23
STEEL- 2nd Floor Erection	43 days	Wed 5/17/23	Mon 4/24/23	Mon 4/24/23	Tue 6/27/23	Wed 6/21/23	Wed 6/21/23
STEEL-Roof Erection	28 days	Wed 6/21/23	Wed 5/24/23	Wed 5/24/23	Tue 7/25/23	Fri 6/30/23	Fri 6/30/23
2nd Floor Slab	23 days	Wed 8/16/23	Mon 7/10/23	Mon 7/10/23	Wed 9/6/23	Wed 8/9/23	Wed 8/9/23
LW/C Deck System	7 days	Wed 8/2/23	Tue 7/11/23	Tue 7/11/23	Tue 8/15/23	Wed 7/19/23	Wed 7/19/23
Metal Roof	5 days	Fri 9/1/23	Mon 9/18/23	Mon 9/18/23	Thu 9/21/23	Fri 9/22/23	Fri 9/22/23
PVC Roof System	29 days	Thu 9/7/23	Mon 9/25/23	Mon 9/25/23	Wed 10/4/23	Mon 3/4/24	Mon 3/4/24
Cast Stone/Veneer (10 Weather Days Added)	32 days	Fri 9/22/23	Mon 10/2/23	Mon 10/2/23	Tue 11/14/23	Tue 11/14/23	Tue 11/14/23
Storefront/Windows/Curtain Wall	42 days	Fri 8/25/23	Tue 1/2/24	Tue 1/2/24	Thu 9/21/23	Wed 2/14/24	Wed 2/14/24
DRIED IN	1 day	Thu 10/12/23	Fri 3/1/24	Fri 3/1/24	Thu 10/12/23	Fri 3/1/24	Fri 3/1/24
Storefront Exterior Doors	0 days	NA	Wed 6/5/24	Wed 6/5/24	NA	Fri 6/7/24	Fri 6/7/24
Ceiling Grid	20 days	Thu 1/18/24	Tue 6/18/24	Tue 6/18/24	Wed 2/7/24	Wed 7/17/24	Wed 7/17/24
Final Paint	15 days	Fri 4/12/24	Thu 7/18/24	Thu 7/18/24	Thu 5/2/24	Wed 8/7/24	NA
Floor Covering	15 days	Tue 1/23/24	Thu 7/25/24	NA	Tue 2/27/24	Wed 8/14/24	NA
Library Furniture	10 days	Thu 4/11/24	Mon 8/12/24	NA	Wed 4/24/24	Fri 8/23/24	NA
Doors/Hardware	10 days	Wed 2/28/24	Mon 8/19/24	NA	Tue 3/12/24	Fri 8/30/24	NA
Toilet Accessories	4 days	NA	Thu 9/19/24	NA	NA	Tue 9/24/24	NA
(AREA D) Footings/Stem Walls	19 days	Thu 2/16/23	Wed 2/22/23	Wed 2/22/23	Wed 3/29/23	Mon 3/20/23	Mon 3/20/23
Prep/Pour Slab	21 days	Fri 4/7/23	Wed 5/31/23	Wed 5/31/23	Thu 5/4/23	Wed 6/28/23	Wed 6/28/23
CMU Installation	66 days	Fri 6/23/23	Mon 6/26/23	Mon 6/26/23	Thu 8/10/23	Mon 9/25/23	Mon 9/25/23
STEEL- 2nd Floor Erection	81 days	Fri 7/21/23	Mon 6/26/23	Mon 6/26/23	Mon 8/21/23	Mon 10/16/23	Mon 10/16/23
2nd Floor Slab	2 days	Tue 8/29/23	Tue 8/1/23	Tue 8/1/23	Mon 9/11/23	Wed 8/2/23	Wed 8/2/23
STEEL-Roof Erection	39.7 days	Tue 9/12/23	Fri 9/1/23	Fri 9/1/23	Tue 9/26/23	Wed 12/27/23	Wed 12/27/23
Metal Roof	46 days	Wed 9/27/23	Fri 10/20/23	Fri 10/20/23	Tue 10/10/23	Mon 4/22/24	Mon 4/22/24
LW/C Deck System	12 days	Wed 9/27/23	Fri 11/3/23	Fri 11/3/23	Tue 10/24/23	Fri 12/9/23	Fri 12/9/23
PVC Roof System	30 days	Wed 10/25/23	Mon 11/13/23	Mon 11/13/23	Tue 11/21/23	Fri 1/19/24	Fri 1/19/24
Cast Stone/Veneer	6 days	Fri 9/22/23	Thu 2/8/24	Thu 2/8/24	Thu 10/19/23	Thu 2/22/24	Thu 2/22/24
Storefront Windows	19 days	Fri 9/29/23	Mon 2/19/24	Mon 2/19/24	Mon 10/30/23	Thu 3/14/24	Thu 3/14/24
Dried In	1 day	Tue 11/21/23	Thu 3/14/24	Thu 3/14/24	Tue 11/21/23	Thu 3/14/24	Thu 3/14/24
Cooler/Freezer	10 days	Wed 11/22/23	Thu 4/25/24	Thu 4/25/24	Tue 12/5/23	Wed 5/8/24	Wed 5/8/24
Metal Stud Framing (Interior)	69.55 days	Tue 8/22/23	Wed 8/30/23	Wed 8/30/23	Fri 10/27/23	Tue 7/16/24	Tue 7/16/24
Storefront Exterior Doors	3 days	NA	Mon 6/17/24	Mon 6/17/24	NA	Wed 7/24/24	NA
Finish Sheetrock	42 days	Fri 1/19/24	Mon 6/3/24	Mon 6/3/24	Mon 3/18/24	Tue 7/30/24	NA
Ceiling Grid	15 days	Fri 3/15/24	Mon 7/8/24	Mon 7/8/24	Thu 4/4/24	Fri 8/2/24	NA
Elevator	55 days	Wed 11/22/23	Mon 7/29/24	NA	Tue 2/6/24	Fri 10/11/24	NA
Kitchen Equipment*	20 days	Thu 4/11/24	Mon 7/29/24	NA	Wed 5/8/24	Fri 8/23/24	NA
Floor Covering	20 days	Wed 3/20/24	Thu 8/15/24	NA	Wed 4/17/24	Wed 9/11/24	NA
Doors/Hardware	15 days	Thu 4/4/24	Tue 9/10/24	NA	Wed 4/24/24	Mon 9/30/24	NA

Your Job
Is Our
Reputation

Schedule

Task Name	Duration	Baseline Start	Start	Actual Start	Baseline Finish	Finish	Actual Finish
AREA A: Footings/Stem Walls	31 days	Mon 3/27/23	Wed 4/12/23	Wed 4/12/23	Fri 4/28/23	Wed 5/24/23	Wed 5/24/23
Slab Prep/Pour	12 days	Thu 4/6/23	Wed 7/26/23	Wed 7/26/23	Wed 5/3/23	Thu 8/10/23	Thu 8/10/23
CMU Installation	52.25 days	Fri 7/21/23	Mon 7/31/23	Mon 7/31/23	Thu 10/5/23	Thu 11/30/23	Thu 11/30/23
Steel- Mezz/Low Roof	8 days	Thu 8/31/23	Tue 10/31/23	Tue 10/31/23	Fri 9/29/23	Thu 11/9/23	Thu 11/9/23
2nd Floor Slab	6 days	Fri 9/22/23	Fri 11/3/23	Fri 11/3/23	Fri 10/5/23	Fri 11/10/23	Fri 11/10/23
Steel-High Roof	39.75 days	Mon 10/2/23	Mon 11/6/23	Mon 11/6/23	Fri 10/20/23	Fri 12/29/23	Fri 12/29/23
LWIC Deck System	11 days	Mon 10/2/23	Tue 11/21/23	Tue 11/21/23	Fri 10/6/23	Tue 12/5/23	Tue 12/5/23
Area A PVC ROOF*	33 days	Mon 10/9/23	Wed 12/6/23	Wed 12/6/23	Fri 11/3/23	Fri 2/9/24	Fri 2/9/24
Dried In	1 day	Fri 11/3/23	Thu 2/22/24	Thu 2/22/24	Fri 11/3/23	Thu 2/22/24	Thu 2/22/24
Cast Stone/Veneer	20 days	Fri 10/6/23	Tue 2/20/24	Tue 2/20/24	Thu 11/16/23	Thu 3/21/24	Thu 3/21/24
Storefront Windows	0 days	Tue 10/31/23	Mon 4/15/24	Mon 4/15/24	Tue 11/7/23	Mon 4/15/24	Mon 4/15/24
A Finish Sheetrock	14 days	Thu 2/1/24	Fri 7/26/24	NA	Wed 2/20/24	Wed 8/14/24	NA
Prime/Paint Sheetrock	10 days	Thu 11/9/23	Fri 8/2/24	NA	Wed 1/31/24	Thu 8/15/24	NA
Ceiling Grid	6 days	Fri 4/19/24	Mon 8/19/24	NA	Fri 4/26/24	Mon 8/26/24	NA
GYM Floor*	11 days	Thu 6/6/24	Mon 9/9/24	NA	Thu 6/20/24	Mon 9/23/24	NA
Bleachers*	20 days	Fri 6/21/24	Thu 9/19/24	NA	Thu 7/18/24	Wed 10/16/24	NA
Doors/Hardware	25 days	Mon 4/29/24	Tue 10/1/24	NA	Fri 5/31/24	Mon 11/4/24	NA
Task Name	Duration	Baseline Start	Start	Actual Start	Baseline Finish	Finish	Actual Finish
AREA B: Footings/Stem Walls	45 days	Wed 4/26/23	Mon 6/12/23	Mon 6/12/23	Tue 6/27/23	Fri 8/11/23	Fri 8/11/23
CMU Installation	77.25 days	Fri 9/22/23	Mon 7/31/23	Mon 7/31/23	Tue 11/21/23	Fri 12/1/23	Fri 12/1/23
Slab on Grade	2 days	Mon 5/15/23	Thu 8/31/23	Thu 8/31/23	Wed 6/14/23	Fri 9/1/23	Fri 9/1/23
Elevated Beam @ Shelter	8 days	Mon 7/3/23	Wed 10/11/23	Wed 10/11/23	Wed 7/19/23	Fri 10/20/23	Fri 10/20/23
Steel Joist/Decking	28.5 days	Wed 11/8/23	Tue 11/7/23	Tue 11/7/23	Tue 11/21/23	Wed 12/27/23	Wed 12/27/23
Slab on Grade (STORM SHELTER)	34.8 days	Fri 6/23/23	Fri 11/10/23	Fri 11/10/23	Mon 7/3/23	Fri 1/5/24	Fri 1/5/24
Double Tees	12 days	Thu 7/20/23	Tue 11/14/23	Tue 11/14/23	Wed 8/9/23	Wed 11/29/23	Wed 11/29/23
Elevated Slab	18.5 days	Fri 11/10/23	Tue 11/14/23	Tue 11/14/23	Thu 11/23/23	Thu 2/1/24	Thu 2/1/24
Pre-Cast Concrete Wall	12 days	Mon 6/12/23	Tue 11/14/23	Tue 11/14/23	Fri 6/30/23	Wed 11/29/23	Wed 11/29/23
PVC ROOF SYSTEM	11 days	Wed 11/29/23	Thu 12/28/23	Thu 12/28/23	Tue 12/26/23	Thu 2/22/24	Thu 2/22/24
LWIC Deck System	5 days	Mon 11/20/23	Mon 1/29/24	Mon 1/29/24	Fri 12/1/23	Fri 2/2/24	Fri 2/2/24
Cast Stone/Veneer	0 days	Wed 11/15/23	Mon 2/19/24	Mon 2/19/24	Tue 12/26/23	Wed 3/13/24	Wed 3/13/24
Dried In	1 day	Tue 12/26/23	Thu 2/22/24	Thu 2/22/24	Tue 12/26/23	Wed 5/8/24	Wed 5/8/24
Finish Sheetrock	30 days	Tue 4/16/24	Wed 6/26/24	Wed 6/26/24	Mon 5/27/24	Thu 8/8/24	NA
Prime & 1st Coat Paint Sheetrock	14 days	Tue 5/21/24	Thu 7/11/24	Thu 7/11/24	Fri 6/7/24	Wed 8/28/24	NA
Ceiling Grid	30 days	Mon 5/27/24	Tue 8/13/24	NA	Fri 7/5/24	Mon 9/23/24	NA
Storefront Doors	18 days	Fri 11/24/23	Thu 8/15/24	NA	Tue 12/19/23	Mon 9/9/24	NA
Floor Coverings	21 days	Fri 6/14/24	Mon 9/2/24	NA	Fri 7/12/24	Mon 9/30/24	NA
Final Paint	14 days	Tue 7/16/24	Thu 9/5/24	NA	Fri 8/2/24	Tue 9/24/24	NA
Doors/Hardware	15 days	Tue 6/25/24	Wed 9/11/24	NA	Mon 7/15/24	Tue 10/1/24	NA
Auditorium Seating*	18 days	Tue 7/16/24	Tue 10/1/24	NA	Thu 8/8/24	Thu 10/24/24	NA

Your Job
Is Our
Reputation

Schedule

Task Name	Duration	Baseline Start	Start	Actual Start	Baseline Finish	Finish	Actual Finish
SITE		NA		NA	NA		NA
Dumpster Footing	3 days	Fri 7/7/23	Thu 6/6/24	Thu 6/6/24	Thu 7/13/23	Mon 6/10/24	Mon 6/10/24
Site Stairs	0 days	Thu 1/11/24	Mon 6/24/24	Mon 6/24/24	Fri 1/19/24	Wed 6/26/24	Wed 6/26/24
Sidewalk	50 days	Wed 12/27/23	Tue 3/5/24	Tue 3/5/24	Tue 3/5/24	Tue 7/30/24	NA
Curb & Gutter	30 days	Tue 7/11/23	Wed 6/5/24	Wed 6/5/24	Thu 7/27/23	Mon 7/29/24	NA
Cooling Tower/Vaults/Basin/Piping	40 days	Wed 2/15/23	Mon 6/10/24	Mon 6/10/24	Tue 4/11/23	Fri 8/2/24	NA
Permeable Pavers	10 days	Wed 1/3/24	Mon 8/19/24	NA	Tue 1/16/24	Fri 8/30/24	NA
Landscaping	17 days	Wed 4/3/24	Mon 8/26/24	NA	Thu 4/25/24	Tue 9/17/24	NA
Sod	5 days	Mon 2/12/24	Fri 9/13/24	NA	Fri 2/16/24	Thu 9/19/24	NA
Tyrone Pike ROW-Proofroll Subgrade	0 days	Wed 2/14/24	Mon 6/17/24	Mon 6/17/24	Wed 2/14/24	Mon 6/17/24	Mon 6/17/24
DGA Base Placement-Alt#5	0 days	Thu 2/15/24	Mon 6/17/24	Mon 6/17/24	Thu 2/15/24	Wed 6/19/24	Wed 6/19/24
HD Asphalt Base-Alt#5	2 days	Fri 2/16/24	Wed 6/26/24	Wed 6/26/24	Fri 2/16/24	Thu 6/27/24	Thu 6/27/24
HD Asphalt Surface-Alt#5	1 day	Mon 2/19/24	Mon 8/5/24	NA	Mon 2/19/24	Mon 8/5/24	NA
TYRON PIKE Connection-Proofroll Subgrade	1 day	Fri 2/23/24	Mon 6/17/24	Mon 6/17/24	Fri 2/23/24	Tue 6/18/24	Tue 6/18/24
DGA Placement-Alt#4	0 days	Mon 2/26/24	Mon 6/17/24	Mon 6/17/24	Wed 2/28/24	Wed 6/19/24	Wed 6/19/24
HD Asphalt Base-Alt#4	0 days	Thu 2/29/24	Wed 6/26/24	Wed 6/26/24	Thu 2/29/24	Thu 6/27/24	Thu 6/27/24
HD Asphalt Surface-Alt#4	1 day	Fri 3/1/24	Tue 8/6/24	NA	Fri 3/1/24	Tue 8/6/24	NA
Guardrail-Alt#4	5 days	Mon 3/4/24	Wed 8/7/24	NA	Fri 3/8/24	Tue 8/13/24	NA
School House RD ROW- Proofroll Subgrade	1 day	Fri 3/15/24	Wed 6/19/24	Wed 6/19/24	Fri 3/15/24	Wed 6/19/24	Wed 6/19/24
DGA Placement-Alt#6	1 day	Mon 3/18/24	Thu 6/20/24	Thu 6/20/24	Mon 3/18/24	Thu 6/20/24	Thu 6/20/24
HD Asphalt Base-Alt#6	0 days	Tue 3/19/24	Wed 6/26/24	Wed 6/26/24	Tue 3/19/24	Thu 6/27/24	Thu 6/27/24
HD Asphalt Surface-Alt#6	1 day	Wed 3/20/24	Wed 8/7/24	NA	Wed 3/20/24	Wed 8/7/24	NA
Proofroll Subgrade-Base Bid	0.22 days	Wed 3/27/24	Mon 6/10/24	Mon 6/10/24	Wed 4/3/24	Mon 6/17/24	Mon 6/17/24
DGA Placement-Base Bid	5 days	Thu 4/4/24	Fri 6/14/24	Fri 6/14/24	Thu 5/30/24	Thu 6/20/24	NA
Asphalt Base-Base Bid	10 days	Fri 5/31/24	Thu 6/20/24	Thu 6/20/24	Thu 6/13/24	Wed 8/14/24	NA
Asphalt Surface-Base Bid	7 days	Fri 6/14/24	Mon 8/12/24	NA	Mon 6/24/24	Tue 8/20/24	NA
Perform Final Cleaning	30 days	Wed 8/21/24	Tue 10/8/24	NA	Tue 9/24/24	Mon 11/18/24	NA
HBC Inspection	0 days	NA	Mon 11/18/24	NA	NA	Mon 11/18/24	NA
Achieve Substantial Completion (11/26)	0 days	Tue 10/1/24	Tue 11/20/24	NA	Tue 10/1/24	Tue 11/20/24	NA
Achieve Final Completion(12/26)	0 days	Fri 11/1/24	Fri 12/20/24	NA	Fri 11/1/24	Fri 12/20/24	NA

Your Job
Is Our
Reputation