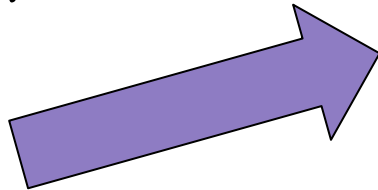


Our BIG
ROCK for
2024-2025...
and beyond

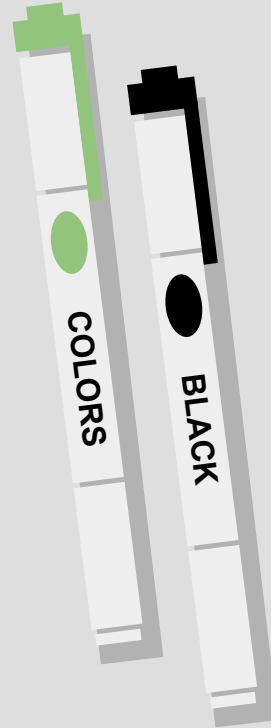
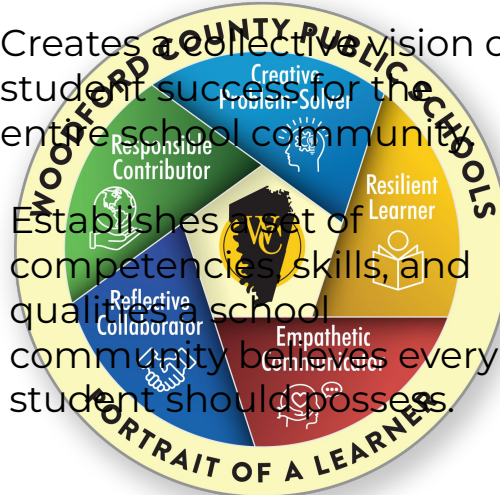


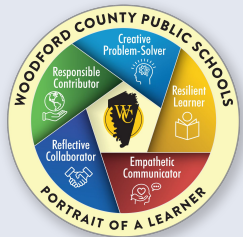
Why do we need a "Portrait"?

Creates a collective vision of student success for the entire school community.

Establishes a set of competencies, skills, and qualities a school community believes every student should possess.

Provides a foundational tool that should shape all school design work.





Phase 1 of Portrait of a Learner in WCPS

LEARN the competencies and the characteristics of each one.

LAUNCH the language in schools and classrooms.

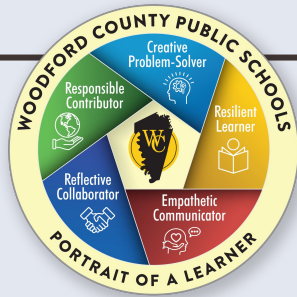


LOOK through the PoL lens to find ways to incorporate these competencies.

2023-2024



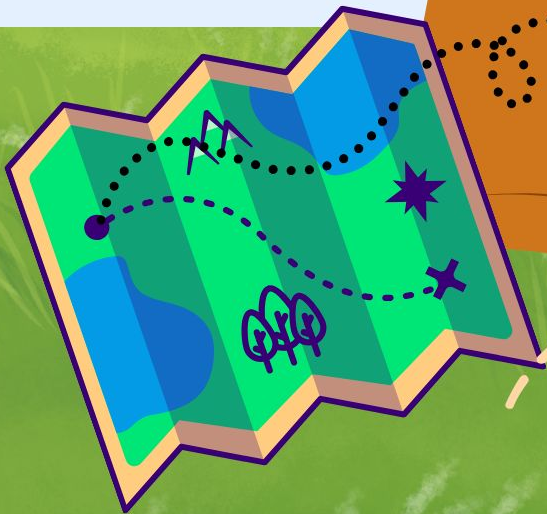
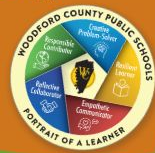
Specific structures for "LOOKING"
over the course of 23-24



Teams	Deeper Learning	Next Gen Leadership Academy	Next Gen Performance Outcomes	MindSpark Education Accelerator	Thinking Maps	Artificial Intelligence in the Classroom
Goals	Teaching students beyond surface level learning. Make pancakes!	Explore innovative strategies related to deeper learning including student agency, authentic problem solving, project based learning, etc.	Develop specific performance outcomes and indicators to support the measurement of the PoL competencies.	Our goal is to increase career readiness opportunities and experiences for all students in K-5. Level Up Plan - Team 2	Explore Thinking Maps which is a set of 8 visual patterns that correlate to specific cognitive processes. Based on the building blocks of brain-based learning, they are used across all grades and content areas to build critical thinking, problem-solving, comprehension, and communication skills necessary for becoming a resilient learner.	Explore AI tools and resources for teachers that can be used in the classroom. Develop knowledge and skills around how artificial intelligence works, its powers, its limitations and the ethics of using it.
	Develop a 3-5 year plan for the PoL implementation through deeper learning strategies.	Leading instruction in buildings beyond surface learning	Building a continuum of learning for portrait competencies.	Grow and develop the middle school and high school students and teachers in leadership, career readiness, and external internship opportunities while incorporating POL language. Level Up Plan - Team 1	This popular Deeper Learning strategy supports the district big rock of PoL work at all building levels in all content areas. By training members at every school there is further common language in the district and common understanding of the deeper learning initiative.	Explore possibilities for student applications of AI in the classroom and how AI can add depth to the learning by using creativity, problem-solving, collaboration and critical thinking to innovate.

What are these PATHS???

After LOOKING for opportunities to incorporate the PoL competencies over the course of 23-24, we discovered consistent themes. These themes helped us narrow where to LOOK and establish specific PATHS to focus on in 24-25 to further incorporate the PoL competencies. Moving forward, the PoL provides the foundational tool that will shape all school design work in Woodford County Public Schools.



Paths to the Portrait

Deeper Learning

Instructional Design & Delivery

Demonstrations of Learning

Technology & Innovation

Career Readiness

Community Engagement

