

DANNY CLEMENS, DIRECTOR
TRACY PARSLEY, MAINTENANCE SUPERVISOR
THOMAS STOKES, CUSTODIAL SUPERVISOR
GEORGE BROCK, ENERGY MANAGER

DEPARTMENT OF FACILITIES

MEMO

TO: Dr. Jesse Bacon, Superintendent
FROM: Danny Clemens, Director of Facilities
Date: July 18, 2024
RE: Bernheim - Change Order 23 - Cafeteria Ductwork Routing Revisions **DC**

This change order covers finish work needed to negotiate around existing structure that was uncovered during summer demolition. Work includes ductwork routing changes that needed to occur due to existing structural conflicts, ductwork was revised from insulated type to double wall insulated since it will be exposed to view. Credits are provided by the mechanical contractor for the unused ductwork.

I recommend approval of this request.

Attached Documents Include – *Action item noted for each:*

- G701-2017 - Change Order 23 - Cafeteria Ductwork Routing Revisions - for Board Signature
- CO 23 - FACPAC - Cafeteria Ductwork Routing Revisions - For Board Signature
- COR-29 Cafeteria Duct Routing REV.- No action – for Board Reference.

OUR MISSION IS TO INSPIRE AND EQUIP OUR STUDENTS TO SUCCEED IN LIFE

BULLITT COUNTY PUBLIC SCHOOLS IS AN EQUAL EDUCATION AND EMPLOYMENT INSTITUTION



AIA® Document G701® – 2017

Change Order

PROJECT: *(Name and address)*
 Bernheim Middle School Renovation
 700 Audubon Drive, Shepherdsville, KY
 40165

CONTRACT INFORMATION:
 Contract For: General Construction
 Date: June 19, 2023

CHANGE ORDER INFORMATION:
 Change Order Number: 023
 Date: July 22, 2024

OWNER: *(Name and address)*
 Bullitt County Public Schools Board of
 Education
 1040 Hwy 44 East
 Shepherdsville, KY 40165

ARCHITECT: *(Name and address)*
 Studio Kremer Architects, Inc.

 1231 S. Shelby Street
 Louisville, KY 40203

CONTRACTOR: *(Name and address)*
 Calhoun Construction Services, Inc.

 7707 National Turnpike
 Louisville, Kentucky 40218

THE CONTRACT IS CHANGED AS FOLLOWS:

(Insert a detailed description of the change and, if applicable, attach or reference specific exhibits. Also include agreed upon adjustments attributable to executed Construction Change Directives.)

See COR #29 for scope of Work included in this Change Order.

The original Contract Sum was	\$ 20,787,544.59
The net change by previously authorized Change Orders	\$ -530,269.63
The Contract Sum prior to this Change Order was	\$ 20,257,274.96
The Contract Sum will be increased by this Change Order in the amount of	\$ 17,231.00
The new Contract Sum including this Change Order will be	\$ 20,274,505.96

The Contract Time will be unchanged by Zero (0) days.
 The new date of Substantial Completion will be

NOTE: This Change Order does not include adjustments to the Contract Sum or Guaranteed Maximum Price, or the Contract Time, that have been authorized by Construction Change Directive until the cost and time have been agreed upon by both the Owner and Contractor, in which case a Change Order is executed to supersede the Construction Change Directive.

NOT VALID UNTIL SIGNED BY THE ARCHITECT, CONTRACTOR AND OWNER.

Studio Kremer Architects, Inc.

Calhoun Construction Services, Inc.

Bullitt County Public Schools Board of
 Education

ARCHITECT *(Firm name)*

CONTRACTOR *(Firm name)*

OWNER *(Firm name)*

SIGNATURE

SIGNATURE

SIGNATURE

Catherine Noble Ward, AIA

PRINTED NAME AND TITLE

Joel Pittard, Project Manager

PRINTED NAME AND TITLE

Dr. Jesse Bacon, Superintendent

PRINTED NAME AND TITLE

DATE

DATE

DATE

FACPAC Contract Change Order Supplemental Information Form (Ref# 60342)

Form Status: Saved

Tier 1 Project: Bernheim Middle School -Renovation

BG Number: 23-051

Status: Active

District: Bullitt County (HB678) (071)

Phase: Project Initiation (View Checklist)

Contract: Calhoun Construction Services, Inc., 0001, General Construction

Type: General Contractor

Proposed

Change Order Number	23
Time Extension Required	No
Date Of Change Order	7/22/2024
Change Order Amount To Date	Increase

Construction Contingency

Calculations below are project wide. Remaining negative Construction Contingency may require the submission of a revised BG1.

Current Approved Amount	\$1,261,761.60
Net Approved COs	\$-136,110.42
Remaining After Approved COs	\$1,397,872.02
Net All COs	\$32,343.58
Remaining After All COs	\$1,229,418.02

This Requested Change Order Amount \$17,231.00

+/-

Change In A/E Fee This Change Order \$0.00

+/-

Change In CM Fee This Change Order \$0.00

+/-

Remaining Construction Contingency \$1,229,418.02

Balance

Contract Change Requested By	Architect/Engineer; General Contractor
Contract Change Reason Code	Found Condition; Improved Plans/Specs

Change Order Description And Justification

This change order covers finish work needed to negotiate around existing structure that was uncovered during summer demolition. Work includes ductwork routing changes that needed to occur due to existing structural conflicts, ductwork was revised from insulated type to double wall insulated since it will be exposed to view. Credits are provided by the mechanical contractor for the unused ductwork.

Cost Benefit To Owner

Work can commence with trades already on site and avoid the added cost of mobilization and general conditions.

Contract unit prices have been utilized No to support the cost associated with this change order.

Detailed Cost Breakdown

Contract unit prices have not been utilized, provide a detailed cost breakdown which separates labor, material, profit and overhead.

Detail Item	Amount	Percent of Total
Labor	\$4,759.55	27.62%
Materials	\$10,037.23	58.25%
Profit and Overhead	\$2,263.22	13.13%
Bond Insurance	\$171.00	0.99%
Cost Breakdown Total:	\$17,231.00	

Cost for this Change Order supported No by an alternate bid or competitive price quote

Explain Why

Work can commence with trades already on site and maintain the current Construction Schedule.

Change Order Supplemental Information Form Signature Page (Online Form Ref# 60342)

Architect

Date

Construction Manager

Date

Lisa Lewis

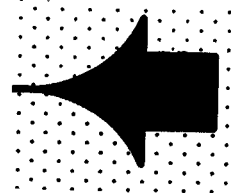
7-19-2024

Finance Officer

Date

Local Board of Education Designee

Date



Change Order Request 29 - PCO #77 - RFP-20 Cafeteria Duct Routing

622-Bernheim Middle School Renovation
6/25/2024



Summary of Work

RFP-20 Cafeteria Duct Routing

Scope - Subcontractor	Description of Scope	Cost
1 Bernheim Middle School Renovation		\$16,248.00
1.1 Structural Steel Framing - Independent -	RFP-20 - No Cost Change	\$0.00
1.2 Quantum Install -	RFP-20 Cafeteria Duct Routing; Add Break Metal	\$285.00
1.3 Int Drywall & Framing Material - CCS Interiors -	RFP-20 - No Cost Change	\$0.00
1.4 Sprinklers - Dalmatian -	RFP-20 - No Cost Change	\$0.00
1.5 HVAC - Lusk -	RFP-20 Cafeteria Duct Routing	\$15,963.00
1.6 Electrical - KES -	RFP-20 No Cost Change	\$0.00

\$16,248.00

Fee	5.00%	\$812
Bond	1.00%	\$171

Total Amount	\$17,231
---------------------	-----------------

Approved By:

Submitted By:

Jorja G. Lyons

Date:

Date:

6/25/2024



The Lusk Group

820 S. Dixie Hwy., Muldraugh, KY 40155
Tel (502) 942-6966 Fax (502) 942-6964

June 12, 2024
Project: Bernheim Middle School
Change Order Request #8 RFP-20
Attn: Joel Pittard

Please find our change order request below for the hvac changes shown in RFP20.

\$13,611.46 material add
\$- 3,859.23 material deduct
\$ 5,865.00 labor 69 hrs @ 85.00 per hr.
\$- 1,105.00 labor 13 hrs @ 85.00 per hr deduct
\$14,512.23 cost
\$ 1,451.22 O&P 10%

\$ 15,963.45 Total Change Order Request

Excluded in price:
Architectural cut & patch

Please advise if additional information is required.
Respectfully submitted,

Jeremy Hester
Project Manager / Estimator
Lusk Mechanical Contractors Inc.
Cell 270-272-8010
Office 502-942-6966

Recap Report

Printed: 6/12/2024 9:16:32 AM

Full Recaps

Lusk Group

Project Name: (1107) Bernheim Middle School

Bid Date:

Base Bid/Alternate: Alt. Bid: RFP20 ADD

Scopes included: Drawing: <All>
System: <All>
Spec: <All>
Floor: <All>
Zone: <All>
SysSymbol: <All>

Project Calculation Log

Calculations date: 6/12/2024 9:15:27 AM
There are errors in the calculation log. Rerun calculations after these problems are addressed.
Calculations were run with AutoBid version: 2021.1.0
Labor Book: Lusk Group Labor Book
Wage Table: Denver 2002
Non-GTO: adjusting digitized duct for fittings; NOT adjusting non-digitized duct for fittings
Rect Duct: NOT dropping short pieces; NOT converting short pieces to full
Rnd Duct: NOT dropping short pieces; NOT converting short pieces to full
Oval Duct: NOT dropping short pieces; NOT converting short pieces to full
Calculating detailing; labor multiplier: 0%
NOT calculating pressure testing
Duct/fitting labor: is adjusted for aspect ratio
Using insulation; Using treatment
NOT looking up tap material thickness separate from body/reducer
TakeOff lines: 5588 - Items processed: 6779
Errors: 6, Warnings: 1, Hints: 1

Name:
Full Recaps

Recap Report
 Full Recaps
Project Grand Totals

6/12/2024 9:16:31 AM
 Errors: 6, Warnings: 1, Hints: 1

Bernheim Middle School

Description	Material			Labor			
	Weight (lb)	Weight w/ wst	Total Cost (Material)	Shop Hours	Adjusted Shop Hrs	Field Hours	Adjusted Field Hrs
Ductwork	1,966	1,976	-\$230	5	5	59	59
Other Labor				5	5	10	10
Grand Total	1,966	1,976	-\$230*	10	10	69	69

* Excludes Quotes
 x 6.53
 \$12,841.00

Recap Report
 Full Recaps
Ductwork Totals

6/12/2024 9:16:30 AM
 Errors: 6, Warnings: 1, Hints: 1

Bernheim Middle School

Description	Material			Labor			
	Weight (lb)	Weight w/ wst	Total Cost (Material)	Shop Hours	Adjusted Shop Hrs	Field Hours	Adjusted Field Hrs
Material							
Galvanized	1,966	1,976	\$230	5	5	59	59
Total	1,966	1,976	\$230	5	5	59	59

Recap Report
 Full Recaps
 Ductwork (Material Totals)

6/12/2024 9:16:30 AM
 Errors: 6, Warnings: 1, Hints: 1

Bernheim Middle School
Galvanized

Description	Material			Labor			
	Weight (lb)	Weight w/ wst	Total Cost (Material)	Shop Hours	Adjusted Shop Hrs	Field Hours	Adjusted Field Hrs
Fabricated							
Round	173	183	\$83	5	5	12	12
GV/Perf DW-Q	173	183	\$83	5	5	12	12
Quoted							
Round	1,793	1,793	\$147			47	47
GV/Perf DW-Q	1,793	1,793	\$147	0		47	47
Fabricated	173	183	\$83	5	5	12	12
Quoted	1,793	1,793	\$147			47	47
Total	1,966	1,976	\$230	5	5	59	59

Recap Report
Full Recaps
Ductwork (Section Totals)

6/12/2024 9:16:26 AM
Errors: 6, Warnings: 1, Hints: 1

Bernheim Middle School
Galvanized (Fabricated)
Round - GV/Perf DW-Q (Doublewall)

Description	Material									Labor				
	Quantity	% of Qty	Length (ft)	Area (sq ft)	Area w/ wst	Avg. wt/each	Weight (lb)	Weight w/ wst	Unit Cost	Total Cost (Material)	Shop Hours	Adjusted Shop Hrs	Field Hours	Adjusted Field Hrs
Duct and Fittings Summary										\$43	4	4	3	3
Coupling-Male	20	100%		56	59	7.24	145	152		43	4	4	3	3
Duct and Fittings Summary	20			56	59		145	152						
Duct and Fitting Welds											1	1	0	
Continuous			10								1	1		
Duct and Fitting Welds			10											
Connectors and their Reinforcing											0		0	
Connectors	20													
Connectors and their Reinforcing	20													
Hangers							29	32		\$13	0		6	6
Lower/Vertical Support	29									\$7	0		0	
Upper Support	29						29	32		20			6	6
Hangers														
Sealer, Flex Connectors and Turning Vanes										\$20	0		3	3
Sealer			206							20			3	3
Sealer, Flex Connectors and Turning Vanes			206											
Total							173	183		\$83	5	5	12	12

Recap Report
Full Recaps
Ductwork (Section Details)

6/12/2024 9:16:25 AM
Errors: 6, Warnings: 1, Hints: 1

Bernheim Middle School
Galvanized (Fabricated)
Round - GV/Perf DW-Q

Description	Material							Labor				
	Quantity	Waste %	Length (ft)	Area (sq ft)	Area w/ wst	Weight (lb)	Weight w/ wst	Total Cost (Material)	Shop Hours	Adjusted Shop Hrs	Field Hours	Adjusted Field Hrs
Duct and Fittings Summary (Doublewall)												
Galv/Perf 2" DW												
Fittings												
Coupling-Male												
16	7.00	5%		18.33	19.24	47.30	49.66	\$14.00	1.53	1.53	0.97	0.97
18	13.00	5%		37.44	39.31	97.41	102.28	\$28.84	2.83	2.83	1.81	1.81
Total	20			56	59	145	152	\$43	4	4	3	3

Recap Report
Full Recaps
Ductwork (Section Details)

6/12/2024 9:16:25 AM
Errors: 6, Warnings: 1, Hints: 1

Bernheim Middle School
Galvanized (Fabricated)
Round - GV/Perf DW-Q

Description	Material									Labor		
	Quantity	Waste %	Length (ft)	Area (sq ft)	Area w/ wst	Weight Factor	Weight (lb)	Weight w/ wst	Unit Cost	Total Cost (Material)	Shop Hours	Field Hours
Duct and Fittings												
Material (Doublewall)												
Fittings												
Outer Wall [Galvanized]												
Coupling-Male	20.00	5%		55.76	58.55	1.66	92.34	96.96	\$0.276	\$26.76		
Inner Wall [Galvanized]												
Coupling-Male	20.00	5%		45.29	47.56	1.16	52.36	54.97	\$0.292	\$16.08		
							92	97		\$27		
Outer Wall [Galvanized]	20			56	59		52	55		\$16		
Inner Wall [Galvanized]	20			45	48		145	152		\$43		
Total	40			101	106							

Recap Report
 Full Recaps
 Ductwork (Section Details)

6/12/2024 9:16:25 AM
 Errors: 6, Warnings: 1, Hints: 1

Bernheim Middle School
Galvanized (Fabricated)
Round - GV/Perf DW-Q

Description	Material	Length (ft)	Total Cost (Material)	Labor			
				Shop Hours	Adjusted Shop Hrs	Field Hours	Adjusted Field Hrs
Duct and Fitting Welds (Doublewall)							
Continuous		10.00		0.71	0.71	0.00	
Fitting Seam		10.00		0.71	0.71		
				1	1		
Total		10					

Recap Report
Full Recaps
Ductwork (Section Details)

6/12/2024 9:16:26 AM
Errors: 6, Warnings: 1, Hints: 1

Bernheim Middle School
Galvanized (Fabricated)
Round - GV/Perf DW-Q

Description	Material									Labor			
	Quantity	Waste %	Length (ft)	Length w/ wst	Weight Factor	Weight (lb)	Weight w/ wst	Unit Cost	Total Cost (Material)	Shop Hours	Adjusted Shop Hrs	Field Hours	Adjusted Field Hrs
Connectors and their Reinforcing (Doublewall)													
Connectors													
Coupling - Male	18.00											0.00	0.00
#10 Fast PenetrScrw: 1/2	263.00											0.00	0.00
MaleSlip Connection	2.00												
#10 Fast PenetrScrw: 3/4	9.00												
Total													

Recap Report
Full Recaps
Ductwork (Section Details)

6/12/2024 9:16:26 AM
Errors: 6, Warnings: 1, Hints: 1

Bernheim Middle School
Galvanized (Fabricated)
Round - GV/Perf DW-Q

Description	Material								Labor				
	Quantity	Waste %	Length (ft)	Length w/ wst	Weight Factor	Weight (lb)	Weight w/ wst	Unit Cost	Total Cost (Material)	Shop Hours	Adjusted Shop Hrs	Field Hours	Adjusted Field Hrs
Hangers (Doublewall)													
Lower/Vertical Support						28.65	31.52		\$13.33	0.12	0.12	6.32	6.32
Galv1x22ga StrapRnd	29.00					28.65	31.52	\$0.032	\$8.69	0.12	0.12		
Galvanized Strap: 1 x 22ga	29.00	10%	244.55	269.01	0.12	28.65	31.52	\$0.030	\$1.74				
Zinc Chromate Nuts: 1/4	58.00							\$0.050	\$2.90				
ZincChromatePltdBlt: 1/4 x 3/4	58.00												
Upper Support									\$6.67	0.00		0.00	
Strap Attachment (Bar Joists)	29.00							\$0.130	\$3.77				
Zinc Chromate Nuts: 3/8	29.00							\$0.100	\$2.90				
ZincChromatePltdBlt: 3/8 x 1/2	29.00												
Lower/Vertical Support	29					29	32		\$13			6	6
Upper Support	29					29	32		\$20			6	6
Total													

Recap Report
Full Recaps
Ductwork (Section Details)

6/12/2024 9:16:26 AM
Errors: 6, Warnings: 1, Hints: 1

Bernheim Middle School
Galvanized (Fabricated)
Round - GV/Perf DW-Q

Description	Material								Labor				
	Quantity	Waste %	Length (ft)	Length w/ wst	Weight Factor	Weight (lb)	Weight w/ wst	Unit Cost	Total Cost (Material)	Shop Hours	Adjusted Shop Hrs	Field Hours	Adjusted Field Hrs
Sealer, Flex Connectors and Turning Vanes (Doublewall)													
Sealer									\$20.39	0.00		2.72	2.72
Transverse-WB (Transverse)			205.51					\$17.760	\$12.17				
Duct Sealer-WB: Gallon	0.69		205.51	205.51				\$0.040	\$8.22				
Membrane/Tape: 3			205.51	205.51									
Total			206						\$20			3	3

Recap Report
Full Recaps
Ductwork (Section Totals)

6/12/2024 9:16:30 AM
Errors: 6, Warnings: 1, Hints: 1

Bernheim Middle School
Galvanized (Quoted)
Round - GV/Perf DW-Q (Doublewall)

Description	Material						Labor					
	Quantity	% of Qty	Length (ft)	Area (sq ft)	Avg. wt/each	Weight (lb)	Unit Cost	Total Cost (Material)	Shop Hours	Adjusted Shop Hrs	Field Hours	Adjusted Field Hrs
Duct and Fittings									0		27	27
Elbow-90	16	67%		392	52.94	847			0		2	2
Reducer-Concentric	2	8%		7	9.28	19			0		18	18
Spiral Lock - Grooved Flat Lock	6	25%	100	617	154.54	927					47	47
						1,793						
Duct and Fittings												
Treatment							\$147		0		0	
Outer Treatment	5			949			147					
Treatment	5			949								
Total						1,793	\$147				47	47

Recap Report
Full Recaps
Ductwork (Section Details)

6/12/2024 9:16:29 AM
Errors: 6, Warnings: 1, Hints: 1

Bernheim Middle School
Galvanized (Quoted)
Round - GV/Perf DW-Q

Description	Material				Labor				
	Quantity	Length (ft)	Area (sq ft)	Weight (lb)	Total Cost (Material)	Shop Hours	Adjusted Shop Hrs	Field Hours	Adjusted Field Hrs
Duct and Fittings (Doublewall)									
Galv/Perf 2" DW									
Fittings									
Elbow-90									
20 ga			130.28	280.01		0.00		10.02	10.02
16	6.00			566.98		0.00		16.70	16.70
18	10.00		261.76						
Reducer-Concentric									
20 ga			7.44	18.57		0.00		2.12	2.12
18, 16	2.00								
Duct									
Spiral Lock - Grooved Flat Lock									
24 ga		50.00	293.79	440.52		0.00		9.03	9.03
16	3.00	50.00	323.17	486.73		0.00		9.03	9.03
18	3.00								
Elbow-90	16		392	847				27	27
Reducer-Concentric	2		7	19				2	2
Spiral Lock - Grooved Flat Lock	6	100	617	927				18	18
Total	24	100	1,016	1,793				47	47

Recap Report
Full Recaps
Ductwork (Section Details)

6/12/2024 9:16:29 AM
Errors: 6, Warnings: 1, Hints: 1

Bernheim Middle School
Galvanized (Quoted)
Round - GV/Perf DW-Q

Description	Material						Labor				
	Quantity	Length (ft)	Area (sq ft)	Weight Factor	Weight (lb)	Unit Cost	Total Cost (Material)	Shop Hours	Adjusted Shop Hrs	Field Hours	Adjusted Field Hrs
Treatment (Doublewall)											
Galv/Perf 2" DW											
Outer Treatment											
Black Primer-Shop						\$24.633	\$85.13	0.00			0.00
Duct	3.14		549.78			\$24.633	\$61.85	0.00			0.00
Fittings	2.28		399.48								
Total	5		949				\$147				

Recap Report
Full Recaps
Other Labor Totals

6/12/2024 9:16:31 AM
Errors: 6, Warnings: 1, Hints: 1

Bernheim Middle School

Description	Material	Labor			
		Shop Hours	Adjusted Shop Hrs	Field Hours	Adjusted Field Hrs
	Weight (lb)				
Detailing	1,938	5	5	0	10
Material Handling		0		10	
Total		5	5	10	10

Recap Report
 Full Recaps
 Other Labor (Section Details)

6/12/2024 9:16:31 AM
 Errors: 6, Warnings: 1, Hints: 1

Bernheim Middle School				Labor			
Description	Material			Shop Hours	Adjusted Shop Hrs	Field Hours	Adjusted Field Hrs
	Quantity	Length (ft)	Area (sq ft)				
Detailing				1.37	1.37	0.00	
Round and Flex Duct	6.00	100.00	616.95	3.24	3.24	0.00	
Round Fitting	18.00		399.48				
				5	5		
Total	24	100	1,016				

Group

Recap Report
 Full Recaps
 Other Labor (Section Details)

6/12/2024 9:16:31 AM
 Errors: 6, Warnings: 1, Hints: 1

Bernheim Middle School

Description	Material				Labor			
	Quantity	Length (ft)	Area (sq ft)	Weight (lb)	Shop Hours	Adjusted Shop Hrs	Field Hours	Adjusted Field Hrs
Material Handling					0.00		10.34	10.34
Round Ductwork	44.00	169.67	1,867.88	1,937.51				
Total	44	170	1,868	1,938			10	10

Recap Report

Printed: 6/12/2024 9:19:22 AM

Full Recaps

Lusk Group

Project Name: (1107) Bernheim Middle School

Bid Date:

Base Bid/Alternate: Alt. Bid: RFP20 Deduct

Scopes included: Drawing: <All>
System: <All>
Spec: <All>
Floor: <All>
Zone: <All>
SysSymbol: <All>

Project Calculation Log

Calculations date: 6/12/2024 9:15:27 AM
There are errors in the calculation log. Rerun calculations after these problems are addressed.
Calculations were run with AutoBid version: 2021.1.0
Labor Book: Lusk Group Labor Book
Wage Table: Denver 2002
Non-GTO: adjusting digitized duct for fittings; NOT adjusting non-digitized duct for fittings
Rect Duct: NOT dropping short pieces; NOT converting short pieces to full
Rnd Duct: NOT dropping short pieces; NOT converting short pieces to full
Oval Duct: NOT dropping short pieces; NOT converting short pieces to full
Calculating detailing; labor multiplier: 0%
NOT calculating pressure testing
Duct/fitting labor: is adjusted for aspect ratio
Using insulation; Using treatment
NOT looking up tap material thickness separate from body/reducer
TakeOff lines: 5588 - Items processed: 6779
Errors: 6, Warnings: 1, Hints: 1

Name:
Full Recaps

Recap Report
Full Recaps
Ductwork Totals

6/12/2024 9:19:21 AM
Errors: 6, Warnings: 1, Hints: 1

Bernheim Middle School

Description	Material			Labor			
	Weight (lb)	Weight w/ wst	Total Cost (Material)	Shop Hours	Adjusted Shop Hrs	Field Hours	Adjusted Field Hrs
Material				0		13	13
Galvanized	591	592	\$61				
Total	591	592	\$61			13	13

Recap Report
Full Recaps
Ductwork (Material Totals)

6/12/2024 9:19:21 AM
Errors: 6, Warnings: 1, Hints: 1

Bernheim Middle School
Galvanized

Description	Material			Labor			
	Weight (lb)	Weight w/ wst	Total Cost (Material)	Shop Hours	Adjusted Shop Hrs	Field Hours	Adjusted Field Hrs
Fabricated						2	2
Round	7	8	\$7	0		2	2
GV/Perf DW-Q	7	8	\$7				
Quoted						11	11
Round	584	584	\$54	0		11	11
GV/Perf DW-Q	584	584	\$54				
Fabricated	7	8	\$7			2	2
Quoted	584	584	\$54			11	11
Total	591	592	\$61			13	13

Recap Report
Full Recaps
Ductwork (Section Totals)

6/12/2024 9:19:15 AM
Errors: 6, Warnings: 1, Hints: 1

Bernheim Middle School
Galvanized (Fabricated)
Round - GV/Perf DW-Q (Doublewall)

Description	Material									Labor				
	Quantity	% of Qty	Length (ft)	Area (sq ft)	Area w/ wst	Avg. wt/each	Weight (lb)	Weight w/ wst	Unit Cost	Total Cost (Material)	Shop Hours	Adjusted Shop Hrs	Field Hours	Adjusted Field Hrs
Connectors and their Reinforcing											0		0	
Connectors	3													
Connectors and their Reinforcing	3													
Hangers							7	8		\$3	0		2	2
Lower/Vertical Support	7									\$2	0		0	
Upper Support	7						7	8		5			2	2
Hangers														
Sealer, Flex Connectors and Turning Vanes										\$3	0		0	
Sealer			26							3				
Sealer, Flex Connectors and Turning Vanes			26											
							7	8		\$7			2	2
Total														

Recap Report
Full Recaps
Ductwork (Section Details)

6/12/2024 9:19:15 AM
Errors: 6, Warnings: 1, Hints: 1

Bernheim Middle School
Galvanized (Fabricated)
Round - GV/Perf DW-Q

Description	Material									Labor			
	Quantity	Waste %	Length (ft)	Length w/ wst	Weight Factor	Weight (lb)	Weight w/ wst	Unit Cost	Total Cost (Material)	Shop Hours	Adjusted Shop Hrs	Field Hours	Adjusted Field Hrs
Connectors and their Reinforcing (Doublewall)													
Connectors										0.00		0.00	
Coupling - Male	2.00												
#10 Fast PenetrScrw: 1/2	30.00									0.00		0.00	
MaleSlip Connection	1.00												
#10 Fast PenetrScrw: 3/4	5.00												
Total													

Recap Report
Full Recaps
Ductwork (Section Details)

6/12/2024 9:19:15 AM
Errors: 6, Warnings: 1, Hints: 1

Bernheim Middle School
Galvanized (Fabricated)
Round - GV/Perf DW-Q

Description	Material								Labor				
	Quantity	Waste %	Length (ft)	Length w/ wst	Weight Factor	Weight (lb)	Weight w/ wst	Unit Cost	Total Cost (Material)	Shop Hours	Adjusted Shop Hrs	Field Hours	Adjusted Field Hrs
Hangers (Doublewall)													
Lower/Vertical Support						7.05	7.75		\$3.26	0.03	0.03	1.53	1.53
Galv1x22ga StrapRnd	7.00					7.05	7.75	\$0.032	\$2.14	0.03	0.03		
Galvanized Strap: 1 x 22ga	7.00	10%	60.15	66.17	0.12	7.05	7.75	\$0.030	\$0.42				
Zinc Chromate Nuts: 1/4	14.00							\$0.050	\$0.70				
ZincChromatePltdBlt: 1/4 x 3/4	14.00												
Upper Support									\$1.61	0.00		0.00	
Strap Attachment (Bar Joists)	7.00							\$0.130	\$0.91				
Zinc Chromate Nuts: 3/8	7.00							\$0.100	\$0.70				
ZincChromatePltdBlt: 3/8 x 1/2	7.00												
Lower/Vertical Support	7					7	8		\$3			2	2
Upper Support	7					7	8		\$5			2	2
Total													

Recap Report
Full Recaps
Ductwork (Section Details)

6/12/2024 9:19:15 AM
Errors: 6, Warnings: 1, Hints: 1

Bernheim Middle School
Galvanized (Fabricated)
Round - GV/Perf DW-Q

Description	Material								Labor				
	Quantity	Waste %	Length (ft)	Length w/ wst	Weight Factor	Weight (lb)	Weight w/ wst	Unit Cost	Total Cost (Material)	Shop Hours	Adjusted Shop Hrs	Field Hours	Adjusted Field Hrs
Sealer, Flex Connectors and Turning Vanes (Doublewall)													
Sealer									\$2.57	0.00		0.34	0.34
Transverse-WB (Transverse)			25.92					\$17.760	\$1.53				
Duct Sealer-WB: Gallon	0.09		25.92	25.92				\$0.040	\$1.04				
Membrane/Tape: 3			25.92	25.92									
Total			26						\$3				

Recap Report
Full Recaps
Ductwork (Section Totals)

6/12/2024 9:19:20 AM
Errors: 6, Warnings: 1, Hints: 1

Bernheim Middle School
Galvanized (Quoted)
Round - GV/Perf DW-Q (Doublewall)

Description	Material							Labor				
	Quantity	% of Qty	Length (ft)	Area (sq ft)	Avg. wt/each	Weight (lb)	Unit Cost	Total Cost (Material)	Shop Hours	Adjusted Shop Hrs	Field Hours	Adjusted Field Hrs
Duct and Fittings									0		11	11
Spiral Lock - Grooved Flat Lock	3	100%	60	388	194.77	584					11	11
Duct and Fittings								\$54	0		0	
Treatment								54				
Outer Treatment	2			346								
Treatment	2			346								
Total						584		\$54			11	11

Recap Report
Full Recaps
Ductwork (Section Details)

6/12/2024 9:19:19 AM
Errors: 6, Warnings: 1, Hints: 1

Bernheim Middle School
Galvanized (Quoted)
Round - GV/Perf DW-Q

Description	Material				Total Cost (Material)	Labor			
	Quantity	Length (ft)	Area (sq ft)	Weight (lb)		Shop Hours	Adjusted Shop Hrs	Field Hours	Adjusted Field Hrs
Duct and Fittings (Doublewall)									
Galv/Perf 2" DW									
Duct									
Spiral Lock - Grooved Flat Lock									
24 ga									
18	3.00	60.00	387.96	584.32		0.00		10.83	10.83
								11	11
Total	3	60	388	584					

Recap Report
Full Recaps
Ductwork (Section Details)

6/12/2024 9:19:20 AM
Errors: 6, Warnings: 1, Hints: 1

Bernheim Middle School
Galvanized (Quoted)
Round - GV/Perf DW-Q

Description	Material						Labor				
	Quantity	Length (ft)	Area (sq ft)	Weight Factor	Weight (lb)	Unit Cost	Total Cost (Material)	Shop Hours	Adjusted Shop Hrs	Field Hours	Adjusted Field Hrs
Treatment (Doublewall)											
Galv/Perf 2" DW											
Outer Treatment											
Black Primer-Shop											
Duct	1.97		345.58			\$24.633	\$53.51	0.00		0.00	
Total	2		346				\$54				

Recap Report
 Full Recaps
 Other Labor Totals

6/12/2024 9:19:22 AM
 Errors: 6, Warnings: 1, Hints: 1

Bernheim Middle School

Description	Material Weight (lb)	Labor			
		Shop Hours	Adjusted Shop Hrs	Field Hours	Adjusted Field Hrs
Detailing		1	1	0	
Material Handling	584	0		1	1
Total		1	1	1	1

Recap Report
 Full Recaps
 Other Labor (Section Details)

6/12/2024 9:19:22 AM
 Errors: 6, Warnings: 1, Hints: 1

Bernheim Middle School				Labor			
Description	Material			Shop Hours	Adjusted Shop Hrs	Field Hours	Adjusted Field Hrs
	Quantity	Length (ft)	Area (sq ft)				
Detailing				0.82	0.82	0.00	
Round and Flex Duct	3.00	60.00	387.96				
				1	1		
Total	3	60	388				

Recap Report
 Full Recaps
Other Labor (Section Details)

6/12/2024 9:19:22 AM
 Errors: 6, Warnings: 1, Hints: 1

Bernheim Middle School

Description	Material				Labor			
	Quantity	Length (ft)	Area (sq ft)	Weight (lb)	Shop Hours	Adjusted Shop Hrs	Field Hours	Adjusted Field Hrs
Material Handling								
Round Ductwork	3.00	60.00	677.60	584.32	0.00		0.70	0.70
Total	3	60	678	584			1	1

From: Joe Perraut <jperraut@theluskgroup.com>
Sent: Wednesday, June 12, 2024 9:48 AM
To: 'listquote@shapemfg.com'
Subject: Need some quick Pricing

See list below

- 18" round double wall duct - 50'
- 16" round double wall duct - 50'
- 18" elbow double wall - 10
- 16" elbow double wall - 6
- 18"x16" reducer double wall - 2

> ID given, paintgrip

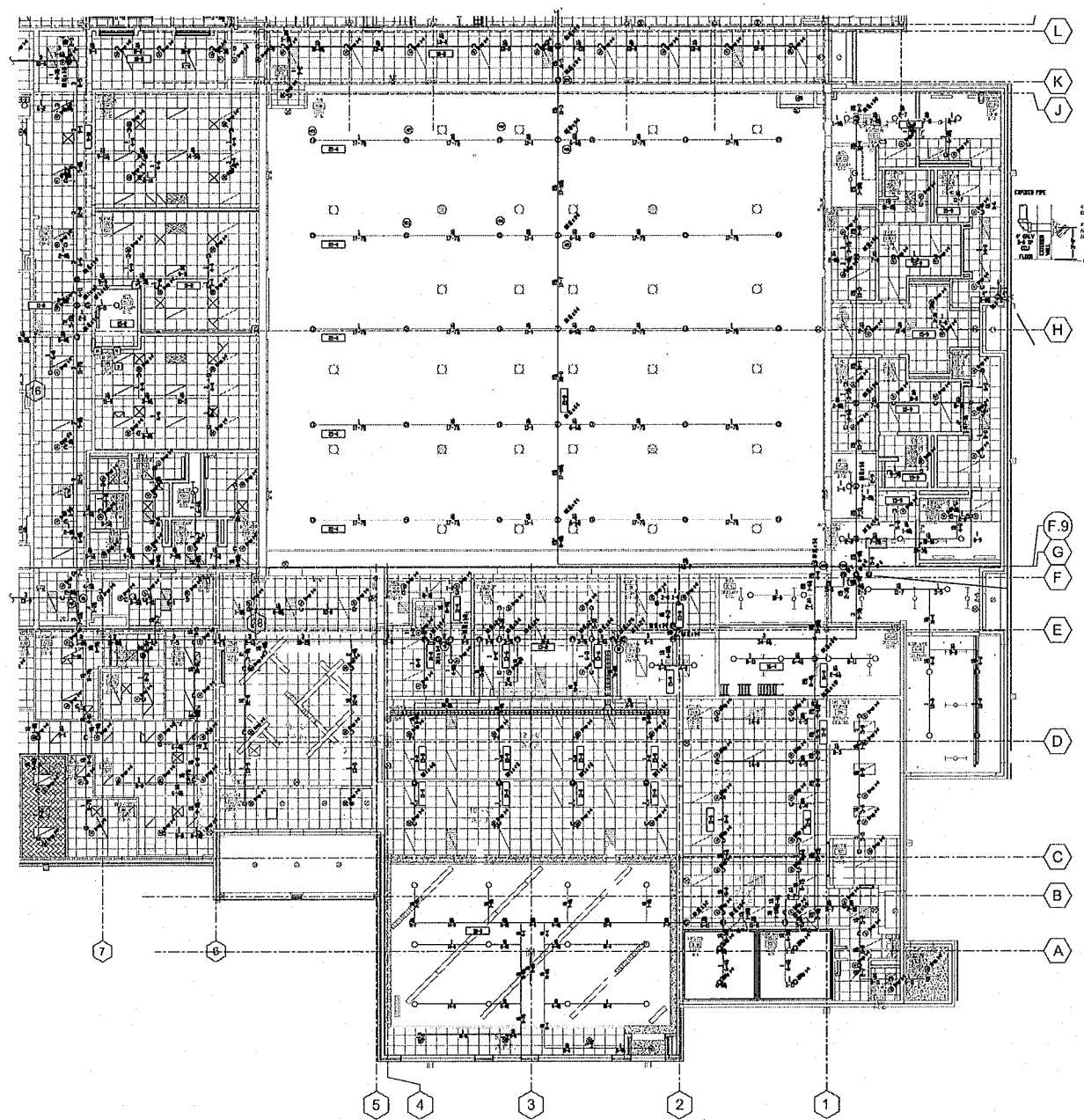
If you have any questions please give me a call.

Joe Perraut
The Lusk Group
820 S. Dixie Hwy
Muldraugh, KY 40155
Office: 502-942-6966
Cell: 502-643-7833
jperraut@theluskgroup.com

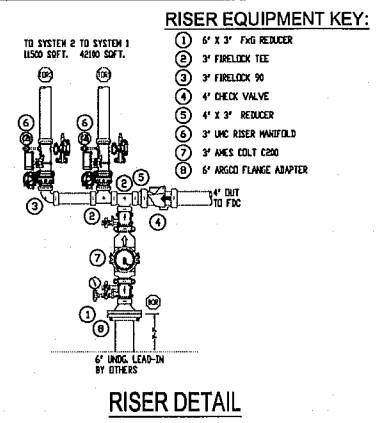
paintgrip, doublewall w/ 1" FDL,
DW lite-flanges
QUOTE from SHAPE MANUFACTURING
Ph. 502-583-7834 Fax 502-583-7925

Amount w/o Tax \$12,841⁰⁰
Date 6-12-24 Quote # 49108
Comments add to job

Please note any substitutions or exclusions



FP3.00
FLOOR PLAN / RISER DETAIL



Sprinkler Head Schedule

Symbol	Count	Thread	K-Factor	Description
⊙	90	1/2"	5.8	VF08 QUICK RESPONSE REDUCED FLOW K5.8 175 DEG WHITE
○	18	1/2"	5.8	VF08 QUICK RESPONSE REDUCED FLOW K5.8 175 DEG BRASS
⊙	28	3/4"	11.2	VS12 QUICK RESPONSE REDUCED FLOW K11.2 175 DEG WHITE
⊙	30	3/4"	8.0	VS12 QUICK RESPONSE ED LPS/STP K8.0 175 DEG BRASS
⊙	13	1/2"	5.8	VF08 QUICK RESPONSE REDUCED FLOW K5.8 200 DEG WHITE
⊙	4	1/2"	5.8	VF12 QUICK RESPONSE REDUCED FLOW K5.8 200 DEG BRASS

201 = Total Number of Heads This Floor

HYDRAULIC DESIGN R.P.O. CALCULATED SYSTEM

Location:

No. of Stairways:

Date of Design:

System Catalog:

Flow Demand:

Residual Pressure:

REVISIONS

1. Change of pipe size from 4" to 3" for the riser.

2. Change of pipe size from 4" to 3" for the riser.

3. Change of pipe size from 4" to 3" for the riser.

4. Change of pipe size from 4" to 3" for the riser.

5. Change of pipe size from 4" to 3" for the riser.

No.	Date	By	Revision
1			
2			
3			
4			
5			

BERNHAIM MIDDLE SCHOOL
300 ALDORSON DRIVE
SHIRESHORON, N.Y. 07185

FIRE PROTECTION

Date: 02/1/2023
Designed: KEPPER HAGAN | Checked: AARON MICHAEL

FIRE PROTECTION SYSTEMS

FIRE PROTECTION

Project No.: 508271
Drawing: FP3.00 - 0

REQUEST FOR PROPOSAL

PROJECT:	Bernheim Middle School Renovation Shepherdsville, KY	REQUEST FOR PROPOSAL NO.:	20
OWNER:	Bullitt County Public Schools 1040 Highway 44 East Shepherdsville, KY 40165	DATE:	18-Jun-2024
TO CONTRACTOR:	Calhoun Construction Services, Inc. 7707 National Turnpike Louisville, KY 40218	ARCHITECT:	Studio Kremer Architects 1231 S Shelby Street Louisville, KY 40203
		ARCHITECT'S PROJECT NO.:	2022-36 BG# 23-051

Please submit an itemized quotation for changes in the Contract Sum and/or Time incidental to proposed modifications to the Contract Documents described herein.

THIS IS NOT A CHANGE ORDER NOR A DIRECTION TO PROCEED WITH THE WORK DESCRIBED HEREIN

Description:

Provide price proposal for the following:

- Item 1:** REFERENCE A1.6B
- Increased the size of the cafeteria soffit around the beam due to duct work modifications.
 - Removed scheduled soffits from the plan east and west wall.
 - Modified the ACT ceiling along the Cafeteria exterior wall due to the removal of the side wall soffits.
 - Refer to the attached sketch for information on closing the gap at the upper beam and CMU wall as stated on note 1.40 on the architectural sheet A1.6B
- Item 2:** REFERENCE E3.2
- Modified lighting layout due to new ductwork configuration.
- Item 3:** REFERENCE M3.1B
- Modified ductwork layout in Cafeteria.

Sprinkler Modification per site
review 6/20

Attachments:

PDF: sketch, A1.6B, E3.2, M3.1B

ISSUED:	18-Jun-2024	ARCHITECT:	studio kremer architects
CONTRACTOR:	Calhoun Construction Services, Inc.	BY:	Stephanie Satterfield

DETAIL @ CAFETERIA BEAM
(APPLIES TO BOTH SIDES OF BEAM)

EXTEND BREAK
METAL TO BOTTOM
OF METAL ANGLE AT
ROOF DECK.

BREAK METAL TO
EXTEND 3" INTO
BEAM WEB AND
WELD SEAM.

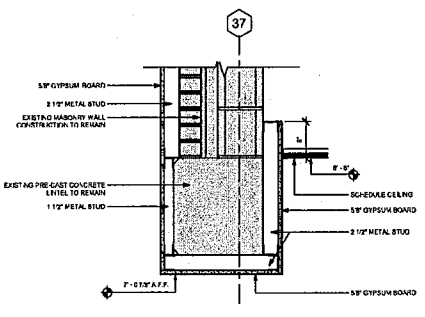
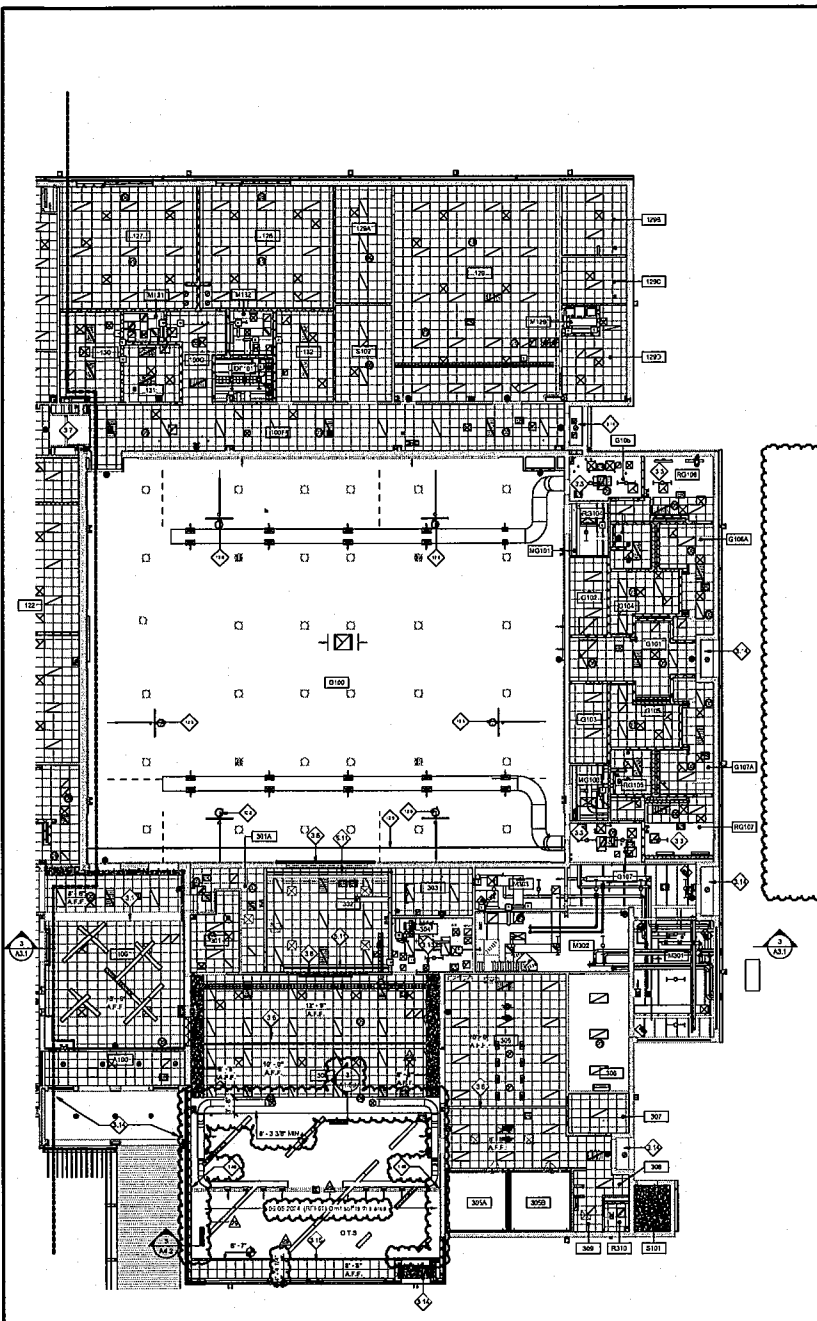
BREAK METAL SHALL
BE PAINTED TO
MATCH COLOR OF
CMU WALL

8" FROM OPENING TO
FRONT FACE OF CMU

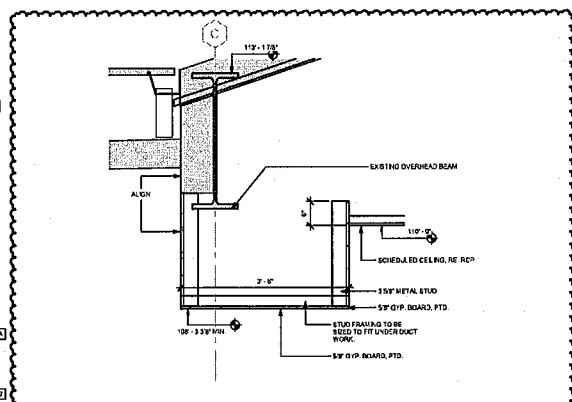
EXTEND BREAK METAL
TO BOTTOM OF METAL
ANGLE AT ROOF DECK.

BREAK METAL TO EXTEND
3" INTO BEAM WEB AND
WELD SEAM.





SECTION DETAIL - BEAMHEAD @ EXIST. EXT. WALL
1" = 1'-0"



SECTION DETAIL - CAFETERIA SOFFIT @ EXIST. BEAM
1" = 1'-0"

ROOM #	ROOM NAME	GLD WEIGHT (LBS/FT ²)
100	CLASSROOM	12.0
101	CLASSROOM	12.0
102	CLASSROOM	12.0
103	CLASSROOM	12.0
104	CLASSROOM	12.0
105	CLASSROOM	12.0
106	CLASSROOM	12.0
107	CLASSROOM	12.0
108	CLASSROOM	12.0
109	CLASSROOM	12.0
110	CLASSROOM	12.0
111	CLASSROOM	12.0
112	CLASSROOM	12.0
113	CLASSROOM	12.0
114	CLASSROOM	12.0
115	CLASSROOM	12.0
116	CLASSROOM	12.0
117	CLASSROOM	12.0
118	CLASSROOM	12.0
119	CLASSROOM	12.0
120	CLASSROOM	12.0
121	CLASSROOM	12.0
122	CLASSROOM	12.0
123	CLASSROOM	12.0
124	CLASSROOM	12.0
125	CLASSROOM	12.0
126	CLASSROOM	12.0
127	CLASSROOM	12.0
128	CLASSROOM	12.0
129	CLASSROOM	12.0
130	CLASSROOM	12.0
131	CLASSROOM	12.0
132	CLASSROOM	12.0
133	CLASSROOM	12.0
134	CLASSROOM	12.0
135	CLASSROOM	12.0
136	CLASSROOM	12.0
137	CLASSROOM	12.0
138	CLASSROOM	12.0
139	CLASSROOM	12.0
140	CLASSROOM	12.0
141	CLASSROOM	12.0
142	CLASSROOM	12.0
143	CLASSROOM	12.0
144	CLASSROOM	12.0
145	CLASSROOM	12.0
146	CLASSROOM	12.0
147	CLASSROOM	12.0
148	CLASSROOM	12.0
149	CLASSROOM	12.0
150	CLASSROOM	12.0
151	CLASSROOM	12.0
152	CLASSROOM	12.0
153	CLASSROOM	12.0
154	CLASSROOM	12.0
155	CLASSROOM	12.0
156	CLASSROOM	12.0
157	CLASSROOM	12.0
158	CLASSROOM	12.0
159	CLASSROOM	12.0
160	CLASSROOM	12.0
161	CLASSROOM	12.0
162	CLASSROOM	12.0
163	CLASSROOM	12.0
164	CLASSROOM	12.0
165	CLASSROOM	12.0
166	CLASSROOM	12.0
167	CLASSROOM	12.0
168	CLASSROOM	12.0
169	CLASSROOM	12.0
170	CLASSROOM	12.0
171	CLASSROOM	12.0
172	CLASSROOM	12.0
173	CLASSROOM	12.0
174	CLASSROOM	12.0
175	CLASSROOM	12.0
176	CLASSROOM	12.0
177	CLASSROOM	12.0
178	CLASSROOM	12.0
179	CLASSROOM	12.0
180	CLASSROOM	12.0
181	CLASSROOM	12.0
182	CLASSROOM	12.0
183	CLASSROOM	12.0
184	CLASSROOM	12.0
185	CLASSROOM	12.0
186	CLASSROOM	12.0
187	CLASSROOM	12.0
188	CLASSROOM	12.0
189	CLASSROOM	12.0
190	CLASSROOM	12.0
191	CLASSROOM	12.0
192	CLASSROOM	12.0
193	CLASSROOM	12.0
194	CLASSROOM	12.0
195	CLASSROOM	12.0
196	CLASSROOM	12.0
197	CLASSROOM	12.0
198	CLASSROOM	12.0
199	CLASSROOM	12.0
200	CLASSROOM	12.0
201	CLASSROOM	12.0
202	CLASSROOM	12.0
203	CLASSROOM	12.0
204	CLASSROOM	12.0
205	CLASSROOM	12.0
206	CLASSROOM	12.0
207	CLASSROOM	12.0
208	CLASSROOM	12.0
209	CLASSROOM	12.0
210	CLASSROOM	12.0
211	CLASSROOM	12.0
212	CLASSROOM	12.0
213	CLASSROOM	12.0
214	CLASSROOM	12.0
215	CLASSROOM	12.0
216	CLASSROOM	12.0
217	CLASSROOM	12.0
218	CLASSROOM	12.0
219	CLASSROOM	12.0
220	CLASSROOM	12.0
221	CLASSROOM	12.0
222	CLASSROOM	12.0
223	CLASSROOM	12.0
224	CLASSROOM	12.0
225	CLASSROOM	12.0
226	CLASSROOM	12.0
227	CLASSROOM	12.0
228	CLASSROOM	12.0
229	CLASSROOM	12.0
230	CLASSROOM	12.0
231	CLASSROOM	12.0
232	CLASSROOM	12.0
233	CLASSROOM	12.0
234	CLASSROOM	12.0
235	CLASSROOM	12.0
236	CLASSROOM	12.0
237	CLASSROOM	12.0
238	CLASSROOM	12.0
239	CLASSROOM	12.0
240	CLASSROOM	12.0
241	CLASSROOM	12.0
242	CLASSROOM	12.0
243	CLASSROOM	12.0
244	CLASSROOM	12.0
245	CLASSROOM	12.0
246	CLASSROOM	12.0
247	CLASSROOM	12.0
248	CLASSROOM	12.0
249	CLASSROOM	12.0
250	CLASSROOM	12.0
251	CLASSROOM	12.0
252	CLASSROOM	12.0
253	CLASSROOM	12.0
254	CLASSROOM	12.0
255	CLASSROOM	12.0
256	CLASSROOM	12.0
257	CLASSROOM	12.0
258	CLASSROOM	12.0
259	CLASSROOM	12.0
260	CLASSROOM	12.0
261	CLASSROOM	12.0
262	CLASSROOM	12.0
263	CLASSROOM	12.0
264	CLASSROOM	12.0
265	CLASSROOM	12.0
266	CLASSROOM	12.0
267	CLASSROOM	12.0
268	CLASSROOM	12.0
269	CLASSROOM	12.0
270	CLASSROOM	12.0
271	CLASSROOM	12.0
272	CLASSROOM	12.0
273	CLASSROOM	12.0
274	CLASSROOM	12.0
275	CLASSROOM	12.0
276	CLASSROOM	12.0
277	CLASSROOM	12.0
278	CLASSROOM	12.0
279	CLASSROOM	12.0
280	CLASSROOM	12.0
281	CLASSROOM	12.0
282	CLASSROOM	12.0
283	CLASSROOM	12.0
284	CLASSROOM	12.0
285	CLASSROOM	12.0
286	CLASSROOM	12.0
287	CLASSROOM	12.0
288	CLASSROOM	12.0
289	CLASSROOM	12.0
290	CLASSROOM	12.0
291	CLASSROOM	12.0
292	CLASSROOM	12.0
293	CLASSROOM	12.0
294	CLASSROOM	12.0
295	CLASSROOM	12.0
296	CLASSROOM	12.0
297	CLASSROOM	12.0
298	CLASSROOM	12.0
299	CLASSROOM	12.0
300	CLASSROOM	12.0
301	CLASSROOM	12.0
302	CLASSROOM	12.0
303	CLASSROOM	12.0
304	CLASSROOM	12.0
305	CLASSROOM	12.0
306	CLASSROOM	12.0
307	CLASSROOM	12.0
308	CLASSROOM	12.0
309	CLASSROOM	12.0
310	CLASSROOM	12.0
311	CLASSROOM	12.0
312	CLASSROOM	12.0
313	CLASSROOM	12.0
314	CLASSROOM	12.0
315	CLASSROOM	12.0
316	CLASSROOM	12.0
317	CLASSROOM	12.0
318	CLASSROOM	12.0
319	CLASSROOM	12.0
320	CLASSROOM	12.0
321	CLASSROOM	12.0
322	CLASSROOM	12.0
323	CLASSROOM	12.0
324	CLASSROOM	12.0
325	CLASSROOM	12.0
326	CLASSROOM	12.0
327	CLASSROOM	12.0
328	CLASSROOM	12.0
329	CLASSROOM	12.0
330	CLASSROOM	12.0
331	CLASSROOM	12.0
332	CLASSROOM	12.0
333	CLASSROOM	12.0
334	CLASSROOM	12.0
335	CLASSROOM	12.0
336	CLASSROOM	12.0
337	CLASSROOM	12.0
338	CLASSROOM	12.0
339	CLASSROOM	12.0
340	CLASSROOM	12.0
341	CLASSROOM	12.0
342	CLASSROOM	12.0
343	CLASSROOM	12.0
344	CLASSROOM	12.0
345	CLASSROOM	12.0
346	CLASSROOM	12.0
347	CLASSROOM	12.0
348	CLASSROOM	12.0
349	CLASSROOM	12.0
350	CLASSROOM	12.0
351	CLASSROOM	12.0
352	CLASSROOM	12.0
353	CLASSROOM	12.0
354	CLASSROOM	12.0
355	CLASSROOM	12.0
356	CLASSROOM	12.0
357	CLASSROOM	12.0
358	CLASSROOM	12.0
359	CLASSROOM	12.0
360	CLASSROOM	12.0
361	CLASSROOM	12.0
362	CLASSROOM	12.0
363	CLASSROOM	12.0
364	CLASSROOM	12.0
365	CLASSROOM	12.0
366	CLASSROOM	12.0
367	CLASSROOM	12.0
368	CLASSROOM	12.0
369	CLASSROOM	12.0
370	CLASSROOM	12.0
371	CLASSROOM	12.0
372	CLASSROOM	12.0
373	CLASSROOM	12.0
374	CLASSROOM	12.0
375	CLASSROOM	12.0
376	CLASSROOM	12.0
377	CLASSROOM	12.0
378	CLASSROOM	12.0
379	CLASSROOM	12.0
380	CLASSROOM	12.0
381	CLASSROOM	12.0
382	CLASSROOM	12.0
383	CLASSROOM	12.0
384	CLASSROOM	12.0
385	CLASSROOM	12.0
386	CLASSROOM	12.0
387	CLASSROOM	12.0
388	CLASSROOM	12.0
389	CLASSROOM	12.0
390	CLASSROOM	12.0
391	CLASSROOM	12.0
392	CLASSROOM	12.0
393	CLASSROOM	12.0
394	CLASSROOM	12.0
395	CLASSROOM	12.0
396	CLASSROOM	12.0
397	CLASSROOM	12.0
398	CLASSROOM	12.0
399	CLASSROOM	12.0
400	CLASSROOM	12.0

- GENERAL CEILING NOTES:**
- A. CEILING ITEMS ARE SHOWN FOR INFORMATION. CONTRACTOR SHALL VERIFY MECHANICAL, ELECTRICAL, AND PLUMBING DRAWINGS FOR LIGHTING, CEILING MOUNTED EQUIPMENT AND SPRINKLER LOCATIONS.
 - B. CEILING GRID SHALL BE CONFIRMED AS SHOWN AND AT EQUAL INTERVALS IN BOTH DIRECTIONS WITH THE RESPONSIBILITY OF THE WALLS AND/OR BOFFITS OF THE SPACE, UNLESS NOTED OTHERWISE.
 - C. CONTRACTOR SHALL NOTIFY ARCHITECT OF ANY OBSTRUCTIONS BEFORE CEILING INSTALLATION.
 - D. ALL DOWN RODS ARE SHOWN FROM FACE OF GYPSUM BOARD UNLESS NOTED OTHERWISE.
 - E. ALL CEILING DOWN RODS SHALL BE AS SPECIFIED OR SELECTED BY ARCHITECT. REFER TO ROOM FINISH SCHEDULE.
 - F. REFER TO FINISH SCHEDULE FOR CEILING TYPES.
 - G. UNLESS INDICATED OTHERWISE, DOWN RODS SHALL BE 1/2" DIA. UNLESS NOTED OTHERWISE. REFER TO FINISH SCHEDULE FOR CEILING TYPES.
 - H. REFER TO FINISH SCHEDULE FOR CEILING TYPES.
 - I. ALL DOWN RODS SHALL BE 1/2" DIA. UNLESS NOTED OTHERWISE. REFER TO FINISH SCHEDULE FOR CEILING TYPES.
 - J. INSTALL HOLD DOWN CLIPS AT ALL RESTROOM ACT CEILING.
 - K. REFER TO DETAIL 2A15A FOR ALL DOWN ROD DETAIL, UNLESS NOTED OTHERWISE.
 - L. HULLS TO BE 1/2" DIA. UNLESS NOTED OTHERWISE.

- CEILING LEGEND**
- | SYMBOL | DESCRIPTION |
|----------|--|
| [Symbol] | ACT. 2" x 2" SUSPENDED ACOUSTIC PANEL CEILING SYSTEM |
| [Symbol] | GYPSUM BOARD CEILING OVER METAL FRAMING |
| [Symbol] | 1 HOUR FIRE RATED GYPSUM BOARD CEILING |
| [Symbol] | 2 HOUR FIRE RATED GYPSUM BOARD CEILING |
| [Symbol] | OPEN TO STRUCTURE |
| [Symbol] | WINDOW SHIELD - MANUAL SHADE OR OTHER WINDOW, REFER TO CURTAIN WALL ELEVATIONS |
| [Symbol] | 24" LIGHT FIXTURE, RE. ELEC. |
| [Symbol] | 2X2 EXHAUST REGISTER, RE. MECHANICAL |
| [Symbol] | 2X2 SUPPLY REGISTER, RE. MECHANICAL |
| [Symbol] | 2X2 RETURN REGISTER, RE. MECHANICAL |

- KEYNOTE LEGEND**
- | KEYNOTE | DESCRIPTION |
|---------|-------------|
| 100 | CLASSROOM |
| 101 | CLASSROOM |
| 102 | CLASSROOM |
| 103 | CLASSROOM |
| 104 | CLASSROOM |
| 105 | CLASSROOM |
| 106 | CLASSROOM |
| 107 | CLASSROOM |
| 108 | CLASSROOM |
| 109 | CLASSROOM |
| 110 | CLASSROOM |
| 111 | CLASSROOM |
| 112 | CLASSROOM |
| 113 | CLASSROOM |
| 114 | CLASSROOM |
| 115 | CLASSROOM |
| 116 | CLASSROOM |
| 117 | CLASSROOM |
| 118 | CLASSROOM |
| 119 | CLASSROOM |
| 120 | CLASSROOM |
| 121 | CLASSROOM |
| 122 | CLASSROOM |
| 123 | CLASSROOM |
| 124 | CLASSROOM |
| 125 | CLASSROOM |
| 126 | CLASSROOM |
| 127 | CLASSROOM |
| 128 | CLASSROOM |
| 129 | CLASSROOM |
| 130 | CLASSROOM |
| 131 | CLASSROOM |
| 132 | CLASSROOM |
| 133 | CLASSROOM |
| 134 | CLASSROOM |
| 135 | CLASSROOM |
| 136 | CLASSROOM |
| 137 | CLASSROOM |
| 138 | CLASSROOM |
| 139 | CLASSROOM |
| 140 | CLASSROOM |
| 141 | CLASSROOM |
| 142 | CLASSROOM |
| 143 | CLASSROOM |
| 144 | CLASSROOM |
| 145 | CLASSROOM |
| 146 | CLASSROOM |
| 147 | CLASSROOM |
| 148 | CLASSROOM |
| 149 | CLASSROOM |
| 150 | CLASSROOM |
| 151 | CLASSROOM |
| 152 | CLASSROOM |
| 153 | CLASSROOM |
| 154 | CLASSROOM |
| 155 | CLASSROOM |
| 156 | CLASSROOM |
| 157 | CLASSROOM |
| 158 | CLASSROOM |
| 159 | CLASSROOM |
| 160 | CLASSROOM |
| 161 | CLASSROOM |
| 162 | CLASSROOM |
| 163 | CLASSROOM |
| 164 | CLASSROOM |
| 165 | CLASSROOM |
| 166 | CLASSROOM |
| 167 | CLASSROOM |
| 168 | CLASSROOM |
| 169 | CLASSROOM |
| 170 | CLASSROOM |
| 171 | CLASSROOM |
| 172 | CLASSROOM |
| 173 | CLASSROOM |
| 174 | CLASSROOM |
| 175 | CLASSROOM |
| 176 | CLASSROOM |
| 177 | CLASSROOM |
| 178 | CLASSROOM |
| 179 | CLASSROOM |
| 180 | CLASSROOM |
| 181 | CLASSROOM |
| 182 | CLASSROOM |
| 183 | CLASSROOM |
| 184 | CLASSROOM |
| 185 | CLASSROOM |
| 186 | CLASSROOM |
| 187 | CLASSROOM |
| 188 | CLASSROOM |
| 189 | CLASSROOM |
| 190 | CLASSROOM |
| 191 | CLASSROOM |
| 192 | CLASSROOM |
| 193 | CLASSROOM |
| 194 | CLASSROOM |
| 195 | CLASSROOM |
| 196 | CLASSROOM |
| 197 | CLASSROOM |
| 198 | CLASSROOM |
| 199 | CLASSROOM |
| 200 | CLASSROOM |
| 201 | CLASSROOM |
| 202 | CLASSROOM |
| 203 | CLASSROOM |
| 204 | CLASSROOM |
| 205 | CLASSROOM |
| 206 | CLASSROOM |
| 207 | CLASSROOM |
| 208 | CLASSROOM |
| 209 | CLASSROOM |
| 210 | CLASSROOM |
| 211 | CLASSROOM |
| 212 | CLASSROOM |
| 213 | CLASSROOM |
| | |

Per RFI #71

