

**WOODFORD COUNTY BOARD OF EDUCATION
AGENDA ITEM**

ITEM #: VIII N **DATE:** July 22, 2024

TOPIC/TITLE: Options for School Board District Redistricting

PRESENTER:

ORIGIN:

- TOPIC PRESENTED FOR INFORMATION ONLY (No board action required.)
- ACTION REQUESTED AT THIS MEETING
- ITEM IS ON THE CONSENT AGENDA FOR APPROVAL
- ACTION REQUESTED AT FUTURE MEETING: (DATE)
- BOARD REVIEW REQUIRED BY

- STATE OR FEDERAL LAW OR REGULATION
- BOARD OF EDUCATION POLICY
- OTHER:

PREVIOUS REVIEW, DISCUSSION OR ACTION:

- NO PREVIOUS BOARD REVIEW, DISCUSSION OR ACTION
- PREVIOUS REVIEW OR ACTION

- DATE:
- ACTION:

BACKGROUND INFORMATION:

Due to changes in population and continued growth in Woodford County, School Board Districts have become uneven in their percentage of citizens represented.

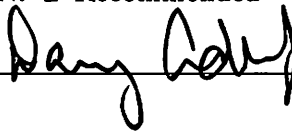
SUMMARY OF MAJOR ELEMENTS:

Approve one of the attached 3 options for School Board District Redistricting.

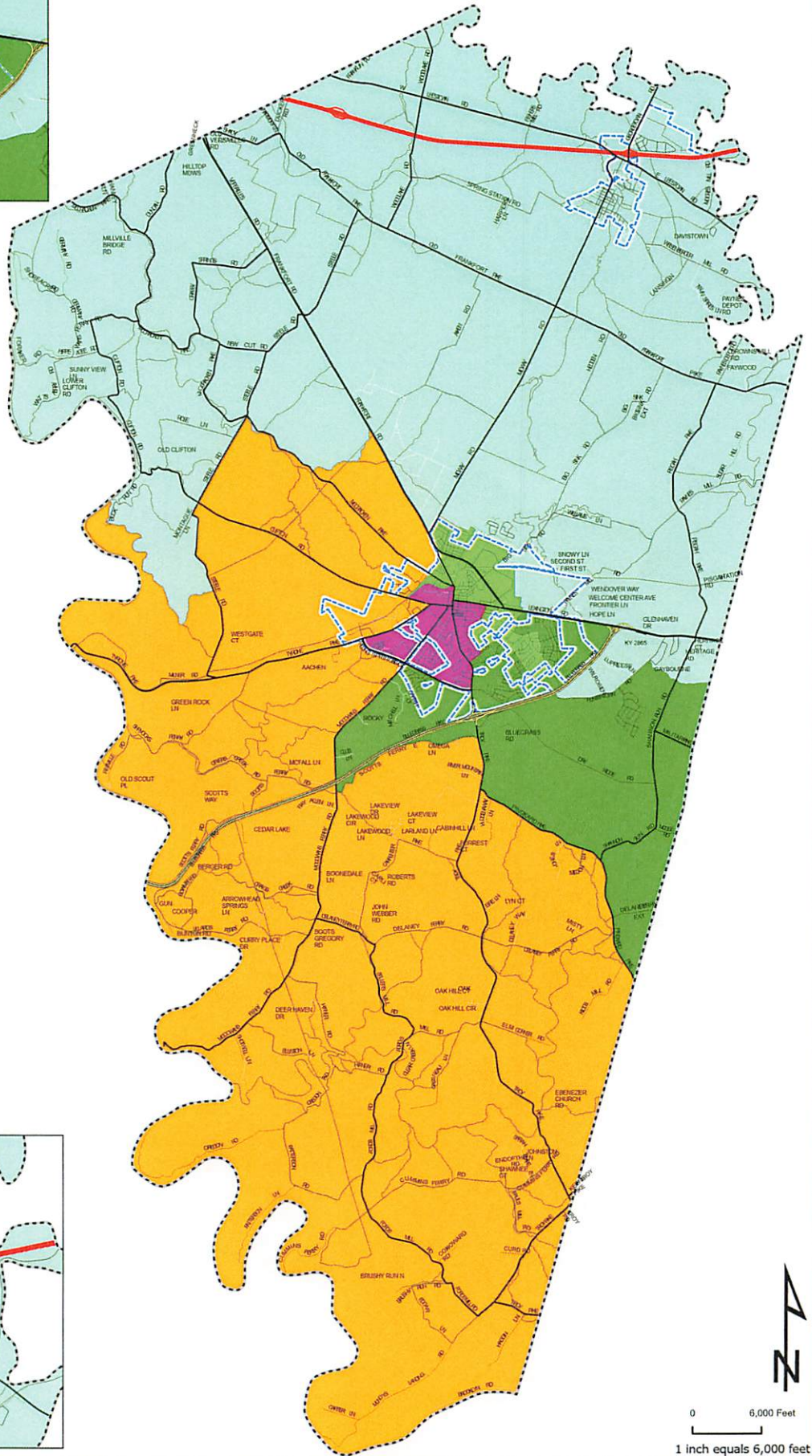
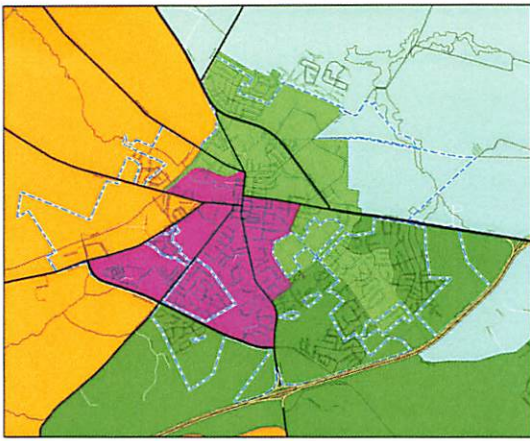
IMPACT ON RESOURCES:

TIMETABLE FOR FURTHER REVIEW OR ACTION:

SUPERINTENDENT'S RECOMMENDATION: Recommended Not Recommended

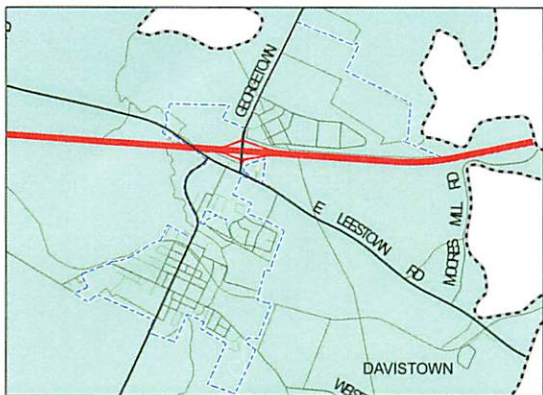


2024 Proposed Woodford County School Board Districts Option 1 (based on 2020 census)



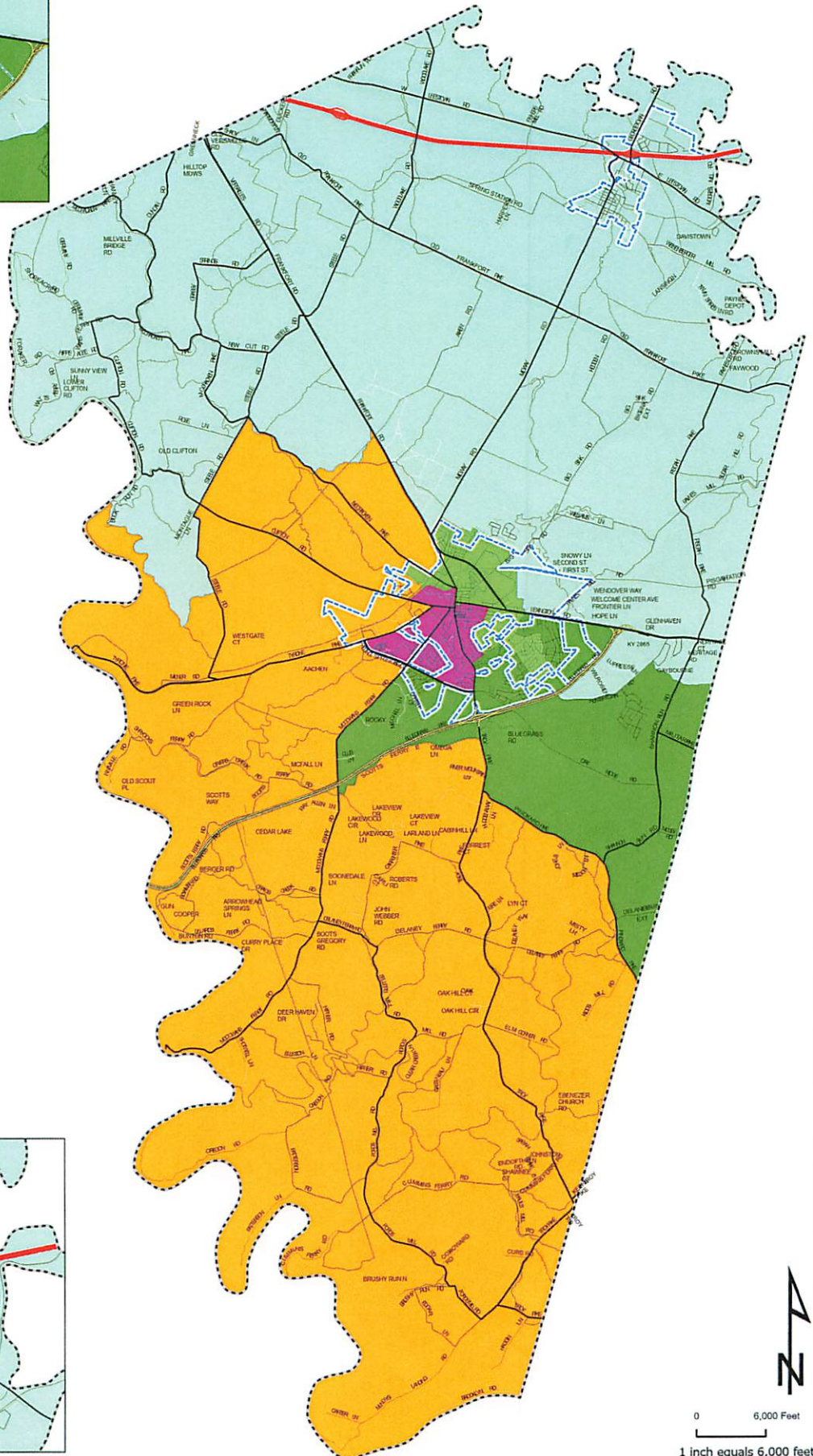
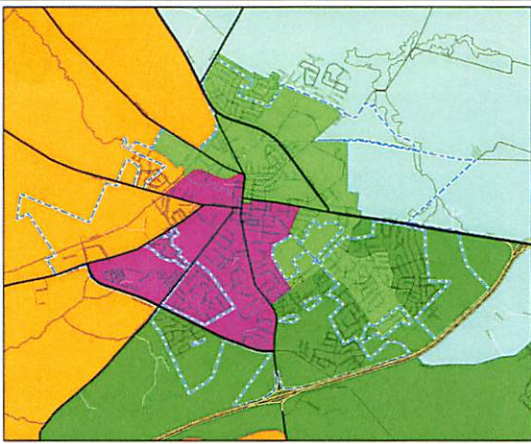
Option 1

- 1
- 2
- 3
- 4
- 5

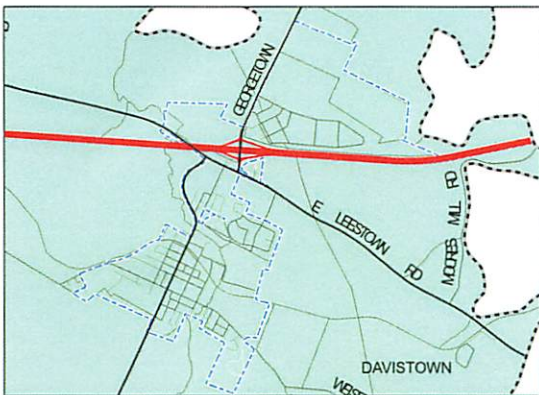
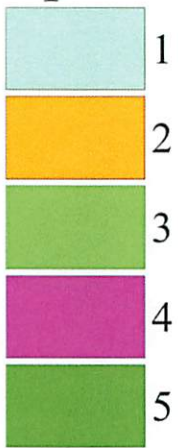


0 6,000 Feet
1 inch equals 6,000 feet

2024 Proposed Woodford County School Board Districts Option 2 (based on 2020 census)

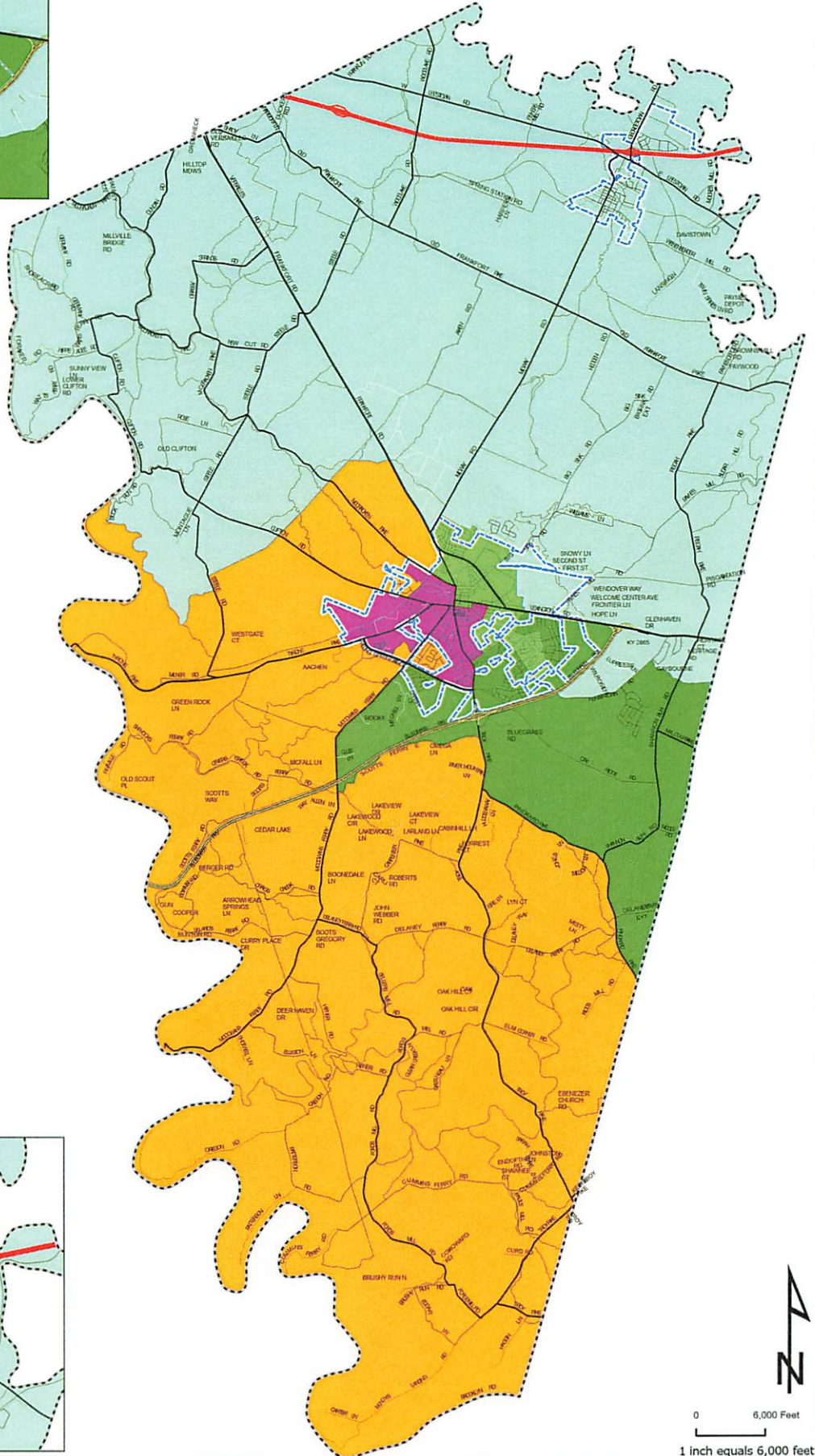
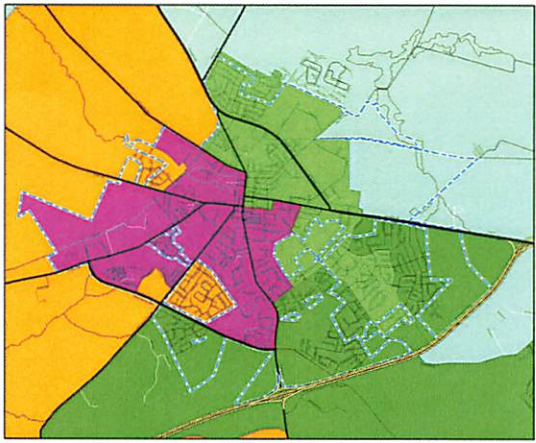


Option 2

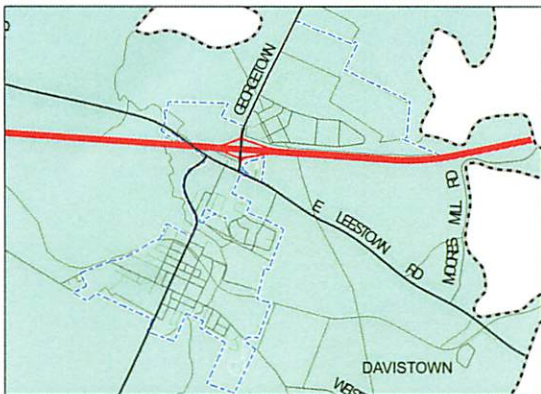
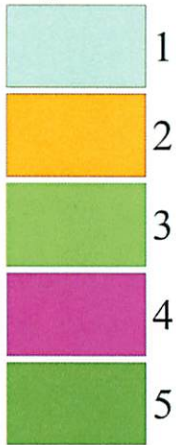


0 6,000 Feet
1 inch equals 6,000 feet

2024 Proposed Woodford County School Board Districts Option 3 (based on 2020 census)



Option 3



0 6,000 Feet
1 inch equals 6,000 feet