



| It's about ALL kids

Issue Paper

DATE:

6/12/2024

AGENDA ITEM (ACTION ITEM):

Consider/Approve a building and grounds alteration request at White's Tower Elementary for the installation of a new digital marquee.

APPLICABLE BOARD POLICY:

5.11 Alterations of Buildings and Grounds

HISTORY/BACKGROUND:

The White's Tower Elementary School SBDM approved a request from the White's Tower Parent Teacher Association (PTA) to donate a new digital marquee outside the school from Wilson Electronic Displays. The generous donation from the PTA of \$37,350.00 will place a new digital marquee on the grounds of White's Tower Elementary. The District's maintenance team will oversee and inspect the project to ensure all required permits are met. This request has been reviewed and approved for Board consideration by the District's Operations team.

FISCAL/BUDGETARY IMPACT:

\$0 to the General Fund, \$37,350.00 donation from PTA.

RECOMMENDATION:


Approval of a building and grounds alteration request at White's Tower Elementary for the installation of a new digital marquee.

CONTACT PERSON:

Robyn Rolf, Principal


Principal/Administrator


District Administrator


Superintendent

Use this form to submit your request to the Superintendent for items to be added to the Board Meeting Agenda.

Principal - complete, print, sign and send to your Director. Director - if approved, sign and put in the Superintendent's mailbox.

Colors for Faux Brick Base will be confirmed by owner prior to fabrication - both brick and mortar/cap colors

113.9"



12"

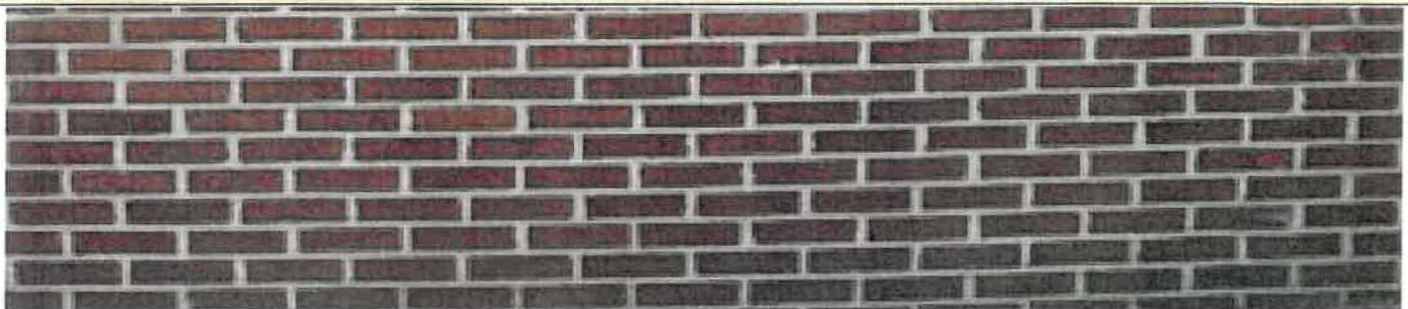
WHITE'S TOWER ELEMENTARY

12"



54.4"

2



24"

116"

120"



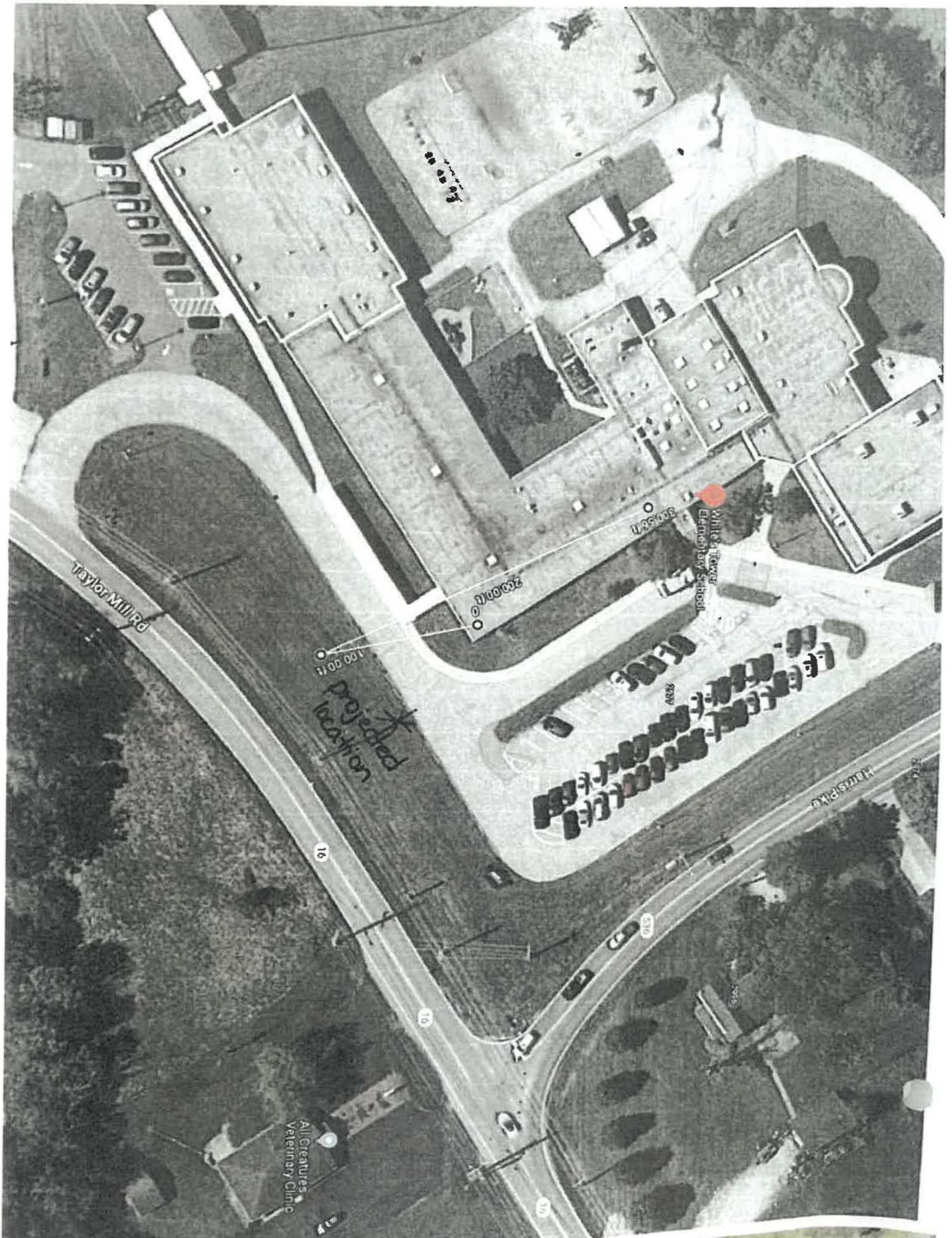
2623 Dayton Germantown Pk
Germantown, OH 45327
877-401-5649
937-558-2812

Approved by:

Robyn Rolf
Signature: *[Handwritten Signature]*

Date:

6/6/24





Wilson Electronic Displays, LLC
 2623 Dayton Germantown Pike • Germantown, OH 45327
 Call: 877-401-5649

Proposal No. 18948

Proposal Date: 5/29/24
 Expiration Date: 7/26/24

Offered To: Danielle Downey
 PTA President - White's Tower Elementary
Kenton County Schools
 2977 Harris Pike
 Independence, KY 41051

Ship To: Danielle Downey
 PTA President - White's Tower Elementary
Kenton County Schools
 2977 Harris Pike
 Independence, KY 41051

859-466-4948

Fax:

859-466-4948

Fax:

Project Name	Terms	PO #	Delivery Method	Due Date	
16mm. 80x176 RGB. 2V					
Item ID	Title	Qty	UOM	Unit Price	Total
MCX16-080176	Wilson Image Series - 16mm, 80x176 - RGB	2	ea	11,850.00	23,700.00
<i>Wilson Image Series - 16mm Pixel Pitch, 80x176 Pixel Matrix</i> <i>4.4" Standard Character Height - 7 pixel font</i> <i>10 rows of 4.4"H text at 29 characters per row.</i> <i>Display Area: 50.4"H x 110.9"L</i> <i>Cabinet Size: 57.15"H x 116.65"L x 6"D</i> <i>- - Optional Cabinet Size: 54.8"H x 113.9"L x 6"D</i> <i>Front Access, powder coated steel cabinet with safety-locking pneumatic hinges.</i> <i>Full Color RGB displays provide 4.4 Trillion colors</i> <i>DIP Type LEDs</i> <i>7500 NIT Brightness</i> <i>Displays simple text, full color pictures, animations, and short AVI files.</i> <i>Software Included. Customer to provide PC.</i> <i>Additional charges for communications methods other than direct ethernet.</i>					
Wireless	Wireless Transmitter/Receiver	1	ea	450.00	450.00
<i>5 GHz Wireless Transmitter/Receiver - 5000' Urban Range</i> <i>Ubiquiti NanoStation LocoM5 Wireless Communications</i> <i>Includes one Transmitter and one Receiver, and mounting hardware.</i> <i>Customer must provide IP addresses!</i>					
Top ID	24"H x 113.9"L Top ID Sign	1	ea	3,350.00	3,350.00
<i>24"H x 113.9"L x 12"D Top ID Sign</i> <i>Top ID Panel - Routed Aluminum Faces with polycarbonate backing.</i> <i>Includes Curved Top Section with Bearcat Face logo (digital print)</i> <i>Internally Illuminated with LED backlighting</i> <i>Double Sided - Full Depth Cabinet, Including Decoration</i> <i>Customer to provide logo digital artwork in vector format.</i>					
Foam Pole Cover	Foam Brick Base Pole Cover	1	ea	3,200.00	3,200.00
<i>Approx. 24"H x 24"D x 120"L (Length TBD based on LED sign cabinet length)</i> <i>Provide Faux BASE according to customer specification - EPS 1# or Better, Brick or Stone look, with Cap.</i> <i>Hard Coat and Finish with cutouts for pole or PVC inserts where indicated (Base Only)</i> <i>EPS 1# or Better - Brick or Stone look, with Cap</i> <i>Simple paint, 2 color. Owner to confirm colors prior to fabrication.</i>					
Engineering	Certified Drawing	1	ea	450.00	450.00
<i>Provide Certified Structural Engineering Drawing, showing footer/foundation and post support specifications.</i>					

Proposal No. 18948

Offered To: Danielle Downey
Kenton County Schools

Ship To: Danielle Downey
Kenton County Schools

Item#	Title	Qty	UOM	Unit Price	Total
-------	-------	-----	-----	------------	-------

New Install	New Installation on Single Pole Support	1	ea	6,200.00	6,200.00
-------------	---	---	----	----------	----------

Install LED signs on New Structure - Structure Provided by Wilson Electronic Displays / WilFab LLC.

Complete Installation Includes Excavation, Concrete Footing, and Single Pole Support

Installation of two LED Displays and Top ID sign on structure provided by Wilson Electronic Displays.

Includes installation of either an aluminum pole cover or foam brick base pole cover below signs to grade.

Does NOT include Additional Costs for pole covers.

Electrical

Adequate Power Provided to install location by others.

Two dedicated 20Amp Circuits @ 120V required! Wilson will provide final electrical hook up. Power must be at site prior to installation.

Software Training

Includes On site software training.

Does NOT include Permits or Engineering!

Does NOT include removal or disposal of existing signs.

Sub-Total: 37,350.00

Tax: 0.00

Shipping:

Total: \$37,350.00

Due Now:

Terms: 50% down with Signed Sales Agreement, remainder due upon successful delivery/installation.

Does NOT include: Taxes, Shipping, or Permits. No Shipping Charges with purchase of installation. Permit/Engineering must be provided prior to installation.

Customer must provide adequate electricity to the site. Two (2) 20Amp Circuits @ 120V required.

Delivery Lead Time is 12 weeks ARO. Receipt of Order requires down payment and signed sales agreement.

4 year parts, 1 year labor warranty. Wireless Components carry a 1 year warranty.

Contact:

Randy Eifert
937-776-5873

Company Name

Authorized Signature

Title

Purchase Order #

Date

Wilson Electronic Displays,

Authorized Signature

Date