



AIA[®] Document G731[™] – 2019

Change Order, Construction Manager as Adviser Edition

PROJECT: (name and address)

Christian County High School

5185 Fort Campbell Blvd Hopkinsville,
KY 42240

OWNER: (name and address)

Christian County Board of Education
200 Glass Avenue
Hopkinsville, KY 42240

CONTRACTOR: (name and address)

Atlas Enterprises

CONTRACT INFORMATION:

Contract For: BP 123/124-03 -
Arch and Science Casework

Date: September 08, 2023

ARCHITECT: (name and address)

Hafer PSC
21 Southeast Third St, Ste 800
Evansville, IN 47708

CHANGE ORDER INFORMATION:

Change Order Number: 025

Date: June 10, 2024

CONSTRUCTION MANAGER: (name and address)

Alliance Corporation
116 E. College Street
Glasgow, KY 42141

THE CONTRACT IS CHANGED AS FOLLOWS:

(Insert a detailed description of the change and, if applicable, attach or reference specific exhibits. Also include agreed upon adjustments attributable to executed Construction Change Directives.)

Science room sink reduction. (17) Additional window sills at window types W6 and W42.

The original Contract Sum was	\$	367,000.00
Net change by previously authorized Change Orders	\$	-51,948.00
The Contract Sum prior to this Change Order was	\$	315,052.00
The Contract Sum will be decreased by this Change Order in the amount of	\$	59,863.25
The new Contract Sum including this Change Order will be	\$	255,188.75

The Contract Time will be unchanged by Zero (0) days.

The Contractor's Work shall be substantially complete on .

NOTE: This Change Order does not include adjustments to the Contract Sum or Guaranteed Maximum Price, or the Contract Time, that have been authorized by Construction Change Directive until the cost and time have been agreed upon by both the Owner and Contractor, in which case a Change Order is executed to supersede the Construction Change Directive.

NOT VALID UNTIL SIGNED BY THE ARCHITECT, CONSTRUCTION MANAGER, CONTRACTOR, AND OWNER.

Hafer PSC

ARCHITECT (Firm name)

SIGNATURE

Eric Rang, AIA, Senior Associate

PRINTED NAME AND TITLE

DATE:

Atlas Enterprises

CONTRACTOR (Firm name)

SIGNATURE

Michael Tunnell

PRINTED NAME AND TITLE

DATE:

Alliance Corporation

CONSTRUCTION MANAGER (Firm name)

SIGNATURE

Kevin Hitchel, Sr. Project Manager

PRINTED NAME AND TITLE

DATE:

Christian County Board of Education

OWNER (Firm name)

SIGNATURE

Christopher Bentzel, Superintendent

PRINTED NAME AND TITLE

DATE:



Christian County High School

The Atlas Companies

123

AMOUNT

\$

465.00

\$

(62,161.35)

\$

1,833.10

\$

(59,863.25)

Science Room Sink Reduction

(17) Additional Window Sills at Window Types W6 and W42

13 and N/A

(ATTACH PR)

ARCHITECT/ENGINEER

OWNER

X CONTRACTOR

X **CM**

CODE OFFICIAL

OTHER

**PLEASE INCLUDE THIS FORM WITH EVERY
CHANGE ORDER.**

PROPOSAL REQUEST

Project:	Christian County High School 5185 Ft. Campbell Blvd Hopkinsville, KY 42240	PR No.:	013
Owner:	Christian County Public Schools 222 Glass Ave Hopkinsville, KY 42240	Date:	March 21, 2024
To:	Kevin Hitchell Alliance Corporation 116 E. College Street Glasgow, KY 42141	Project Number:	2106-204
RE:	Science Room Sink Reduction		
Contract for:			

Please submit an itemized quotation for changes in the Contract Sum and/or Time incidental to proposed modifications to the Contract Documents described herein.
THIS IS NOT A CHANGE ORDER NOR A DIRECTION TO PROCEED WITH THE WORK DESCRIBED HEREIN.

Description:

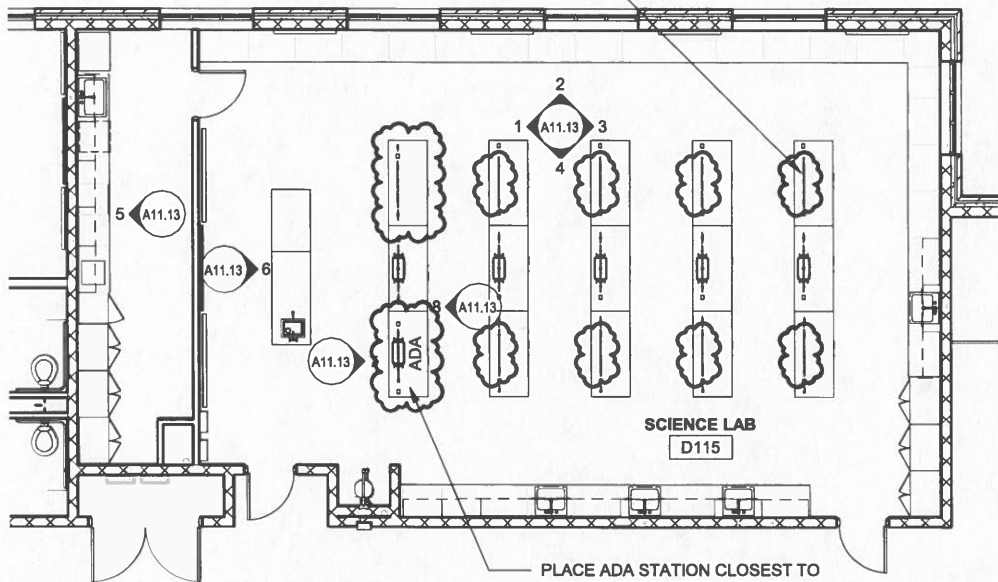
- 1) Remove (9) Nine sinks and facets from science labs D115, D211, E108, E208, G115, G213, J113, & J212. Remove plumbing supply and waste lines as indicated in attached drawings. Where sinks were removed, provide continuous countertop. Move ADA station to the area closest to door at all science labs (left side of lab typical, right side of lab in rooms J113 & J211).
- 2) Remove (7) Seven sinks from Bio Medical Lab D114 as shown in the attached plans.
- 3) Remove Crossbar Assembly, Rod Sockets, & Turreted Gas Valves from rooms D115, E108, G115, J113, E208.

Attachments: PR-13A1, PR-13P1, PR-13P2, PR-13P3, PR-13P4, PR-13P5, PR-13P6, PR-13P7, PR-13P8, PR-13P9, PR-13P10, PR-13P11, PR-13P12

By: Eric Rang

CC:

AT LOCATIONS NOTED, REMOVE SINK & FAUCETS.
COUNTERTOP TO BE CONTINUOUS WHERE SINK
DELETED. TYPICAL OF NINE (9) PER CLASSROOM

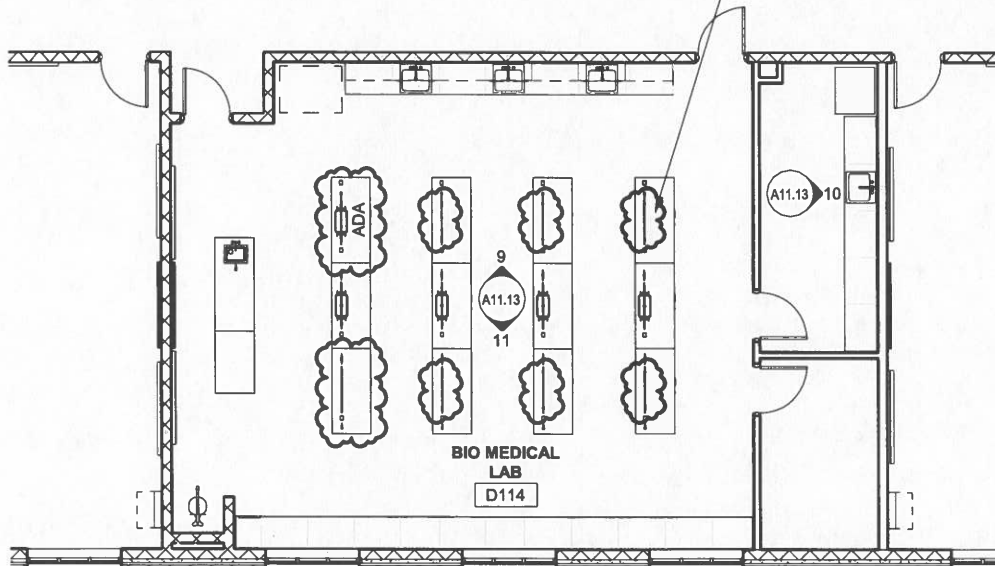


PLACE ADA STATION CLOSEST TO
DOOR IN EACH SCIENCE ROOM.
POSITION OF SINK WILL VARY
DEPENDING ON ROOM LAYOUT.
ADA STATION TO HAVE SINK.

TYPICAL SCIENCE LAB

1/8" = 1'-0"

AT LOCATIONS NOTED, REMOVE SINK &
FAUCETS. COUNTERTOP TO BE
CONTINUOUS WHERE SINK DELETED.
TYPICAL OF SEVEN (7).



BIOMEDICAL LAB D114

1/8" = 1'-0"

HOPKINSVILLE - CHRISTIAN
COUNTY ACADEMY

KDE # : BG 22-104

5185 FT. CAMPBELL BLVD
HOPKINSVILLE, KY 42240

HAFER
architects • designers • engineers

21 SE Third Street,
Suite 800
Evansville, IN 47708
T: 812.422.4187
F: 812.421.6776
www.haferdesign.com

ARCHITECTS PROJECT NO. DATE:
2106-204 **3/21/2024**

TYPE OF DRAWING NO.

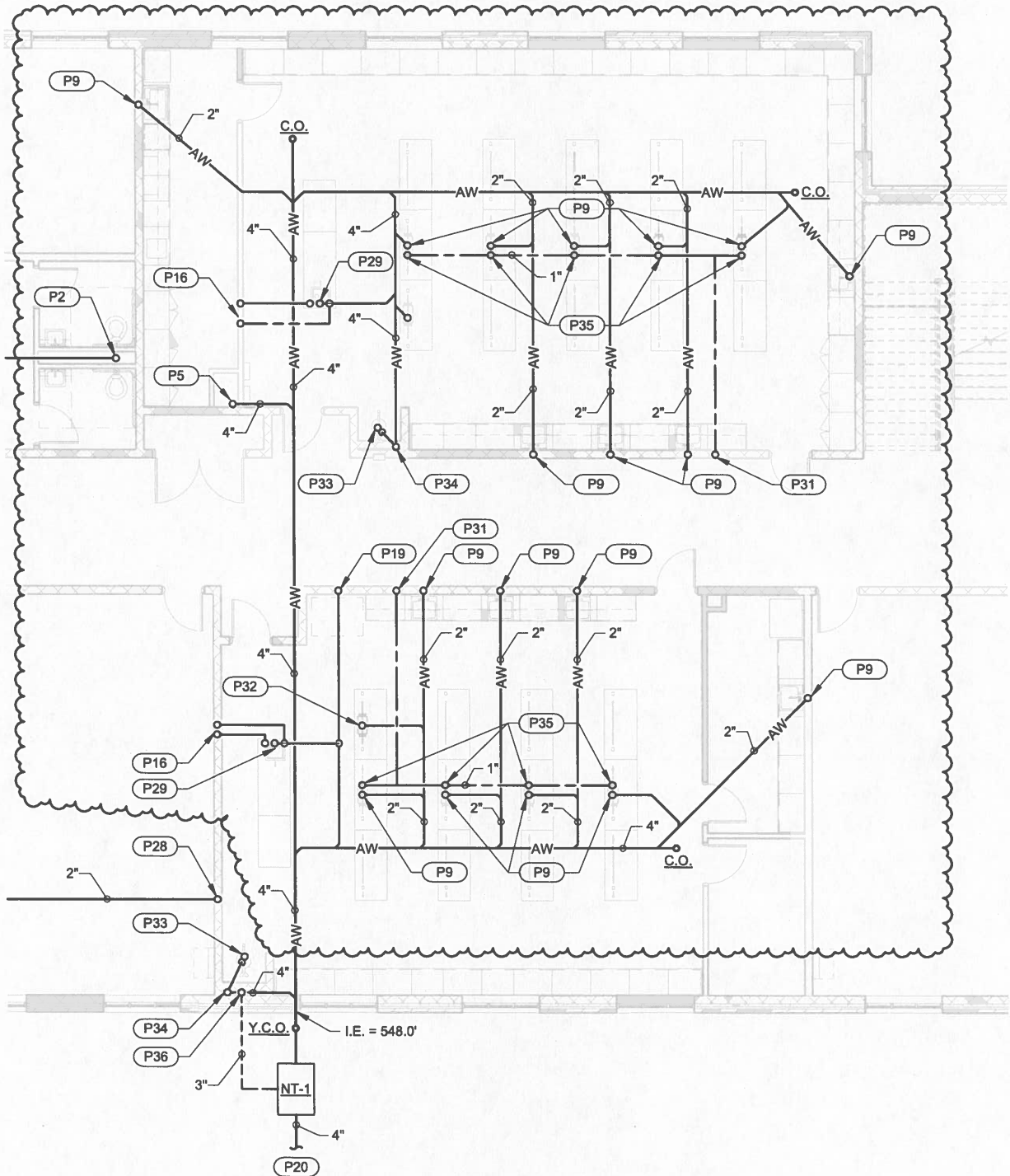
PR-13A1

PLAN NOTES:

P29 2" AW, 1/2" HW & CW UP TO FIXTURE.

P30 1/2" HW AND 1/2" CW UP.

P32 NOTE NOT USED.



FOUNDATION PLUMBING PLAN - AREA D

1/8" = 1'-0"

HOPKINSVILLE - CHRISTIAN
COUNTY ACADEMY

KDE #: BG 22-104

5185 FT. CAMPBELL BLVD
HOPKINSVILLE, KY 42240

HAFER
architects • designers • engineers

21 SE Third Street,
Suite 800
Evansville, IN 47708

T: 812.422.4187
F: 812.421.6776
www.haferdesign.com

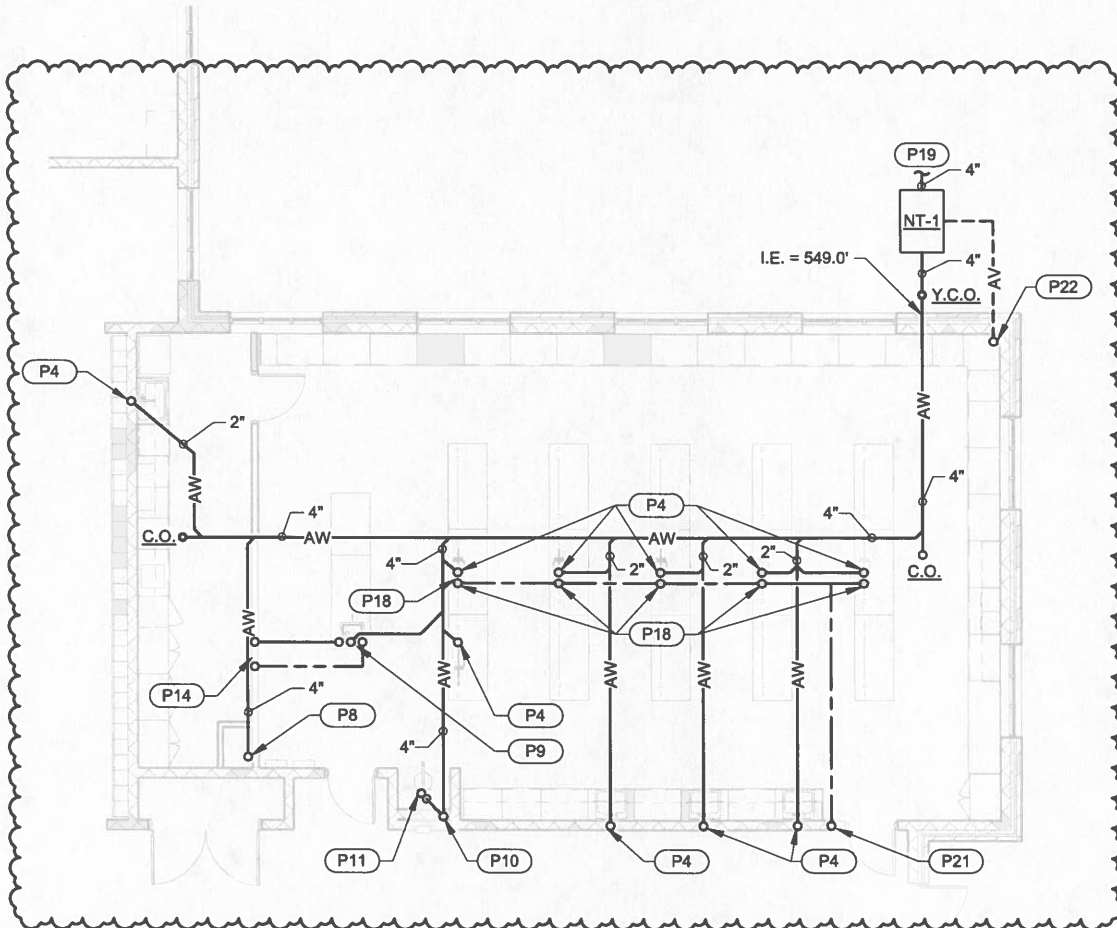
ARCHITECTS PROJECT NO. DATE:
2106-204 3/20/2024

TYPE OF DRAWING NO.

PR-13P1

PLAN NOTES:

- P7 NOTE NOT USED.
- P9 2" AW, 1/2" HW AND 1/2" CW UP TO FIXTURE.
- P14 1/2" HW AND 1/2" CW UP.
- P20 NOTE NOT USED.



FOUNDATION PLUMBING PLAN - AREA E

1/8" = 1'-0"

HOPKINSVILLE - CHRISTIAN
COUNTY ACADEMY

KDE # : BG 22-104

5185 FT. CAMPBELL BLVD
HOPKINSVILLE, KY 42240

HAFER
architects • designers • engineers

21 SE Third Street,
Suite 800
Evansville, IN 47708

T: 812.422.4187
F: 812.421.6776
www.haferdesign.com

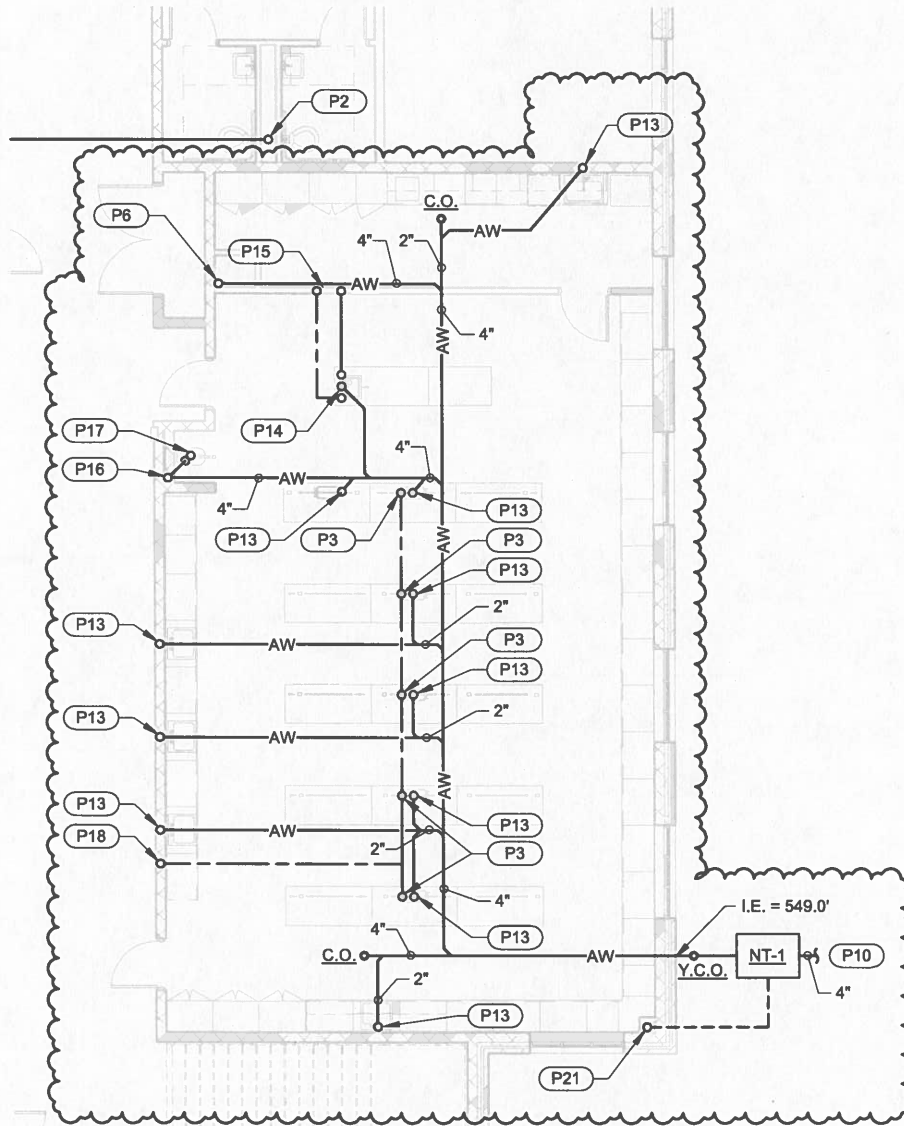
ARCHITECTS PROJECT NO. DATE:
2106-204 3/20/2024

TYPE OF DRAWING NO.

PR-13P2

PLAN NOTES:

- P11 NOTE NOT USED.
- P14 2" AW, 1/2" HW AND 1/2" CW UP TO FIXTURE.
- P15 1/2" HW AND 1/2" CW UP.
- P19 NOTE NOT USED.



FOUNDATION PLUMBING PLAN - AREA G

1/8" = 1'-0"

HOPKINSVILLE - CHRISTIAN
COUNTY ACADEMY

KDE #: BG 22-104

5185 FT. CAMPBELL BLVD
HOPKINSVILLE, KY 42240

HAFER
architects • designers • engineers

21 SE Third Street,
Suite 800
Evansville, IN 47708
T: 812.422.4187
F: 812.421.6776
www.haferdesign.com

ARCHITECTS PROJECT NO. DATE:
2106-204 **3/20/2024**

TYPE OF DRAWING NO.

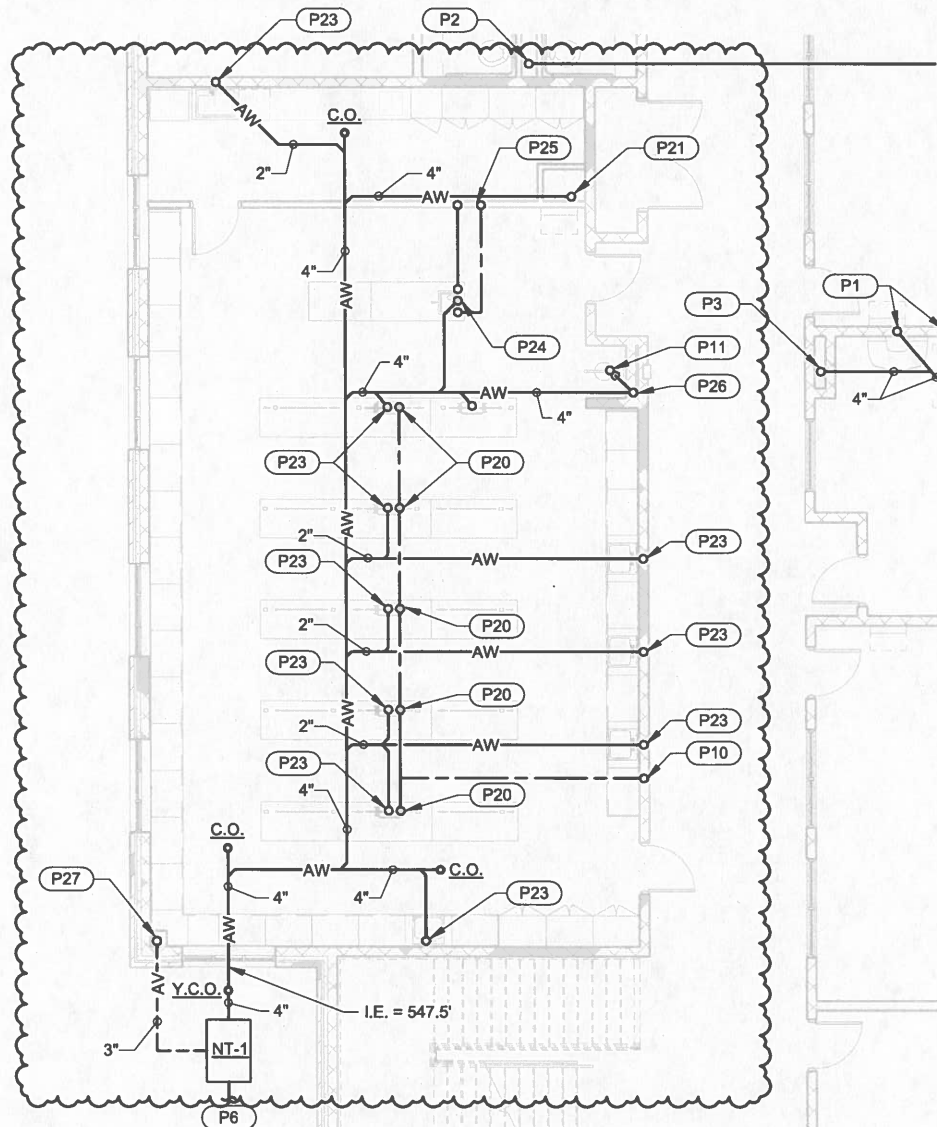
PR-13P3

PLAN NOTES:

P17 NOTE NOT USED.

P22 NOTE NOT USED.

P24 2" AW, 1/2" HW AND 1/2" CW UP TO FIXTURE.



FOUNDATION PLUMBING PLAN - AREA J

1/8" = 1'-0"

HOPKINSVILLE - CHRISTIAN
COUNTY ACADEMY

KDE # : BG 22-104

5185 FT. CAMPBELL BLVD
HOPKINSVILLE, KY 42240

HAFER
architects • designers • engineers

21 SE Third Street,
Suite 800
Evansville, IN 47708

T: 812.422.4187
F: 812.421.6776
www.haferdesign.com

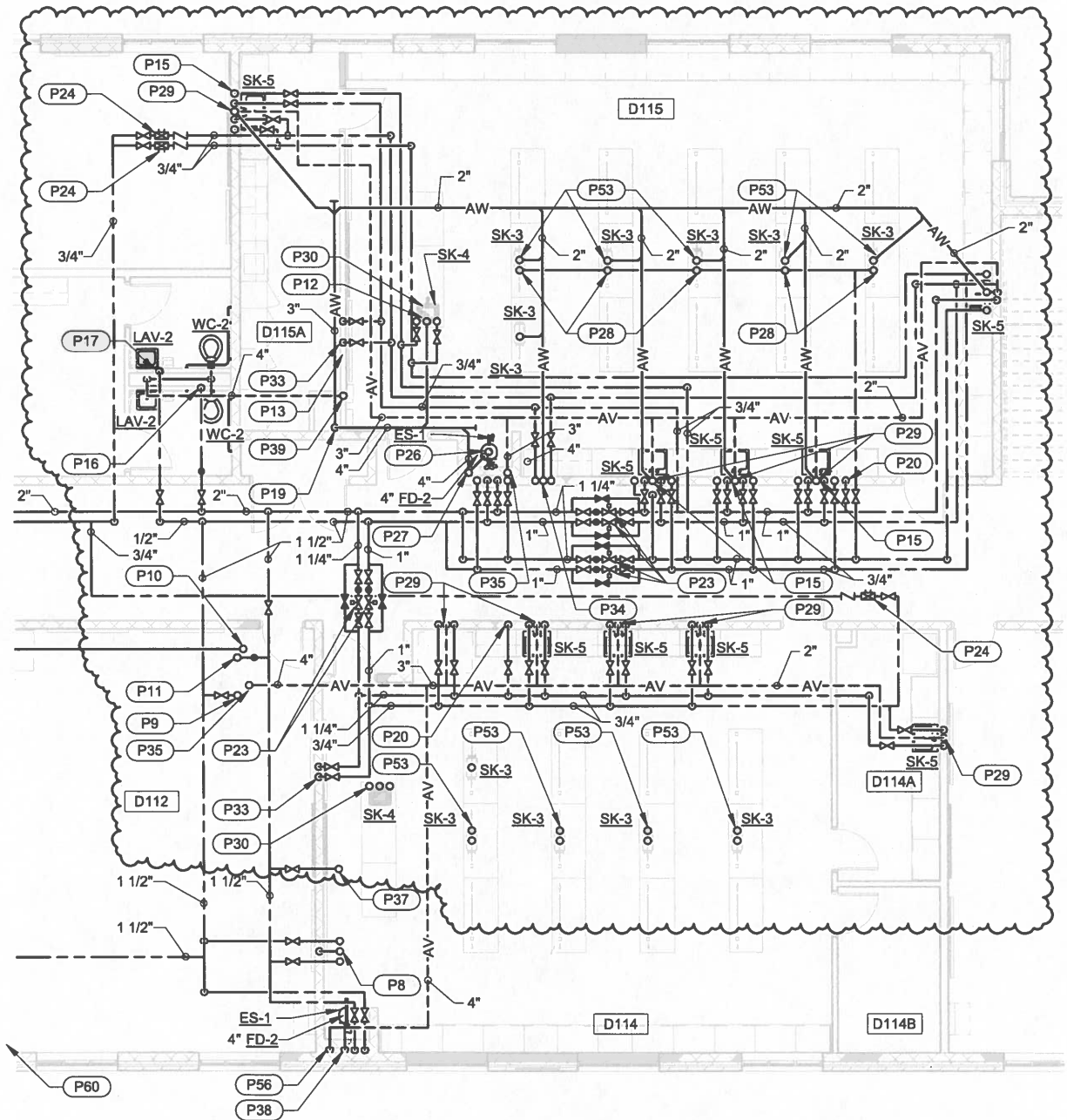
ARCHITECTS PROJECT NO. DATE:
2106-204 3/20/2024

TYPE OF DRAWING NO.

PR-13P4

PLAN NOTES:

- P12 2" AW, 1/2" HW & CW UP TO FIXTURE.
- P21 NOTE NOT USED.
- P29 2" AV DOWN TO FIXTURE.
- P30 1/2" CW AND 1/2" HW FROM BELOW.



FIRST FLOOR PLUMBING PLAN - AREA D

1/8" = 1'-0"

HOPKINSVILLE - CHRISTIAN
COUNTY ACADEMY

KDE #: BG 22-104

5185 FT. CAMPBELL BLVD
HOPKINSVILLE, KY 42240

HAFER
architects • designers • engineers

21 SE Third Street,
Suite 800
Evansville, IN 47708
T: 812.422.4187
F: 812.421.6776
www.haferdesign.com

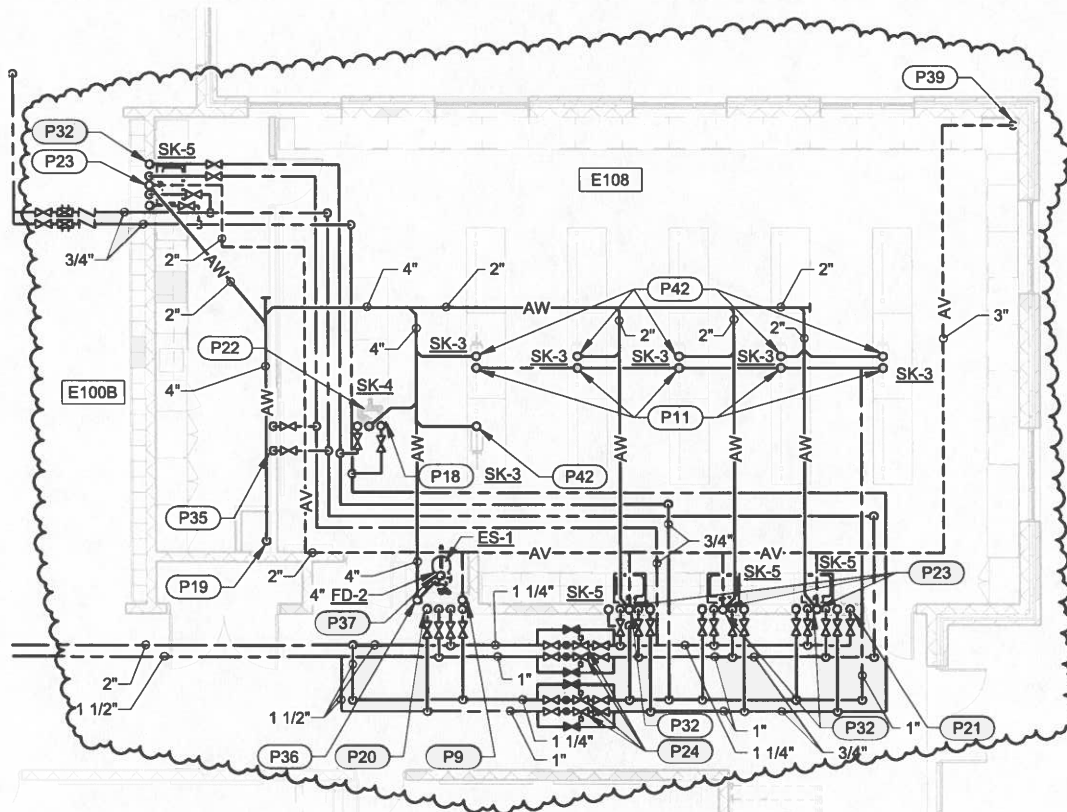
ARCHITECTS PROJECT NO. DATE:
2106-204 3/20/2024

TYPE OF DRAWING NO.

PR-13P5

PLAN NOTES:

- (P9) 4" AV UP & DOWN.
- (P18) 2" AW, 1/2" HW AND 1/2" CW UP TO FIXTURE.
- (P20) 1-1/2" HW & CW DROP TO ES-1 AND 1-1/2" HW & CW UP TO ES-1.
- (P22) 1/2" HW & CW DOWN BELOW SLAB TO ISLAND FIXTURE.
- (P23) 2" AV DOWN TO FIXTURE.
- (P32) 2" AW, 1/2" HW AND 1/2" CW UP TO FIXTURE.
- (P33) NOTE NOT USED.
- (P42) 2" AW UP.



FIRST FLOOR PLUMBING PLAN - AREA E

1/8" = 1'-0"

HOPKINSVILLE - CHRISTIAN
COUNTY ACADEMY

KDE # : BG 22-104

5185 FT. CAMPBELL BLVD
HOPKINSVILLE, KY 42240

HAFFER
architects • designers • engineers

21 SE Third Street,
Suite 800
Evansville, IN 47708
T: 812.422.4187
F: 812.421.6776
www.hafferdesign.com

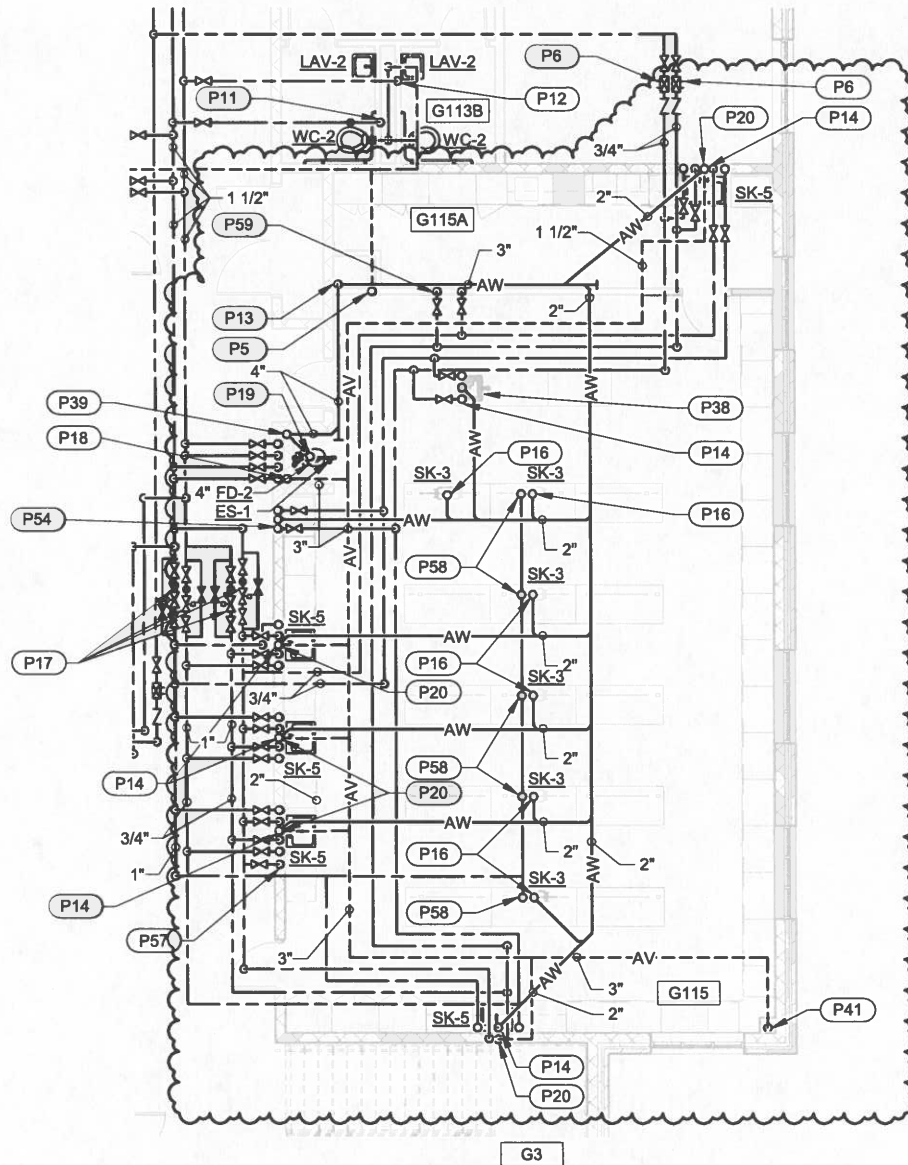
ARCHITECTS PROJECT NO. DATE:
2106-204 3/20/2024

TYPE OF DRAWING NO.

PR-13P6

PLAN NOTES:

- P14 2" AW, 1/2" HW AND 1/2" CW UP TO FIXTURE.
- P15 NOTE NOT USED.
- P16 2" AW UP.
- P18 4" AV UP & DOWN.
- P20 2" AV DOWN TO FIXTURE.
- P21 NOTE NOT USED.
- P38 1/2" CW AND 1/2" HW FROM BELOW.



FIRST FLOOR PLUMBING PLAN - AREA G

1/8" = 1'-0"

HOPKINSVILLE - CHRISTIAN
COUNTY ACADEMY

KDE #: BG 22-104

5185 FT. CAMPBELL BLVD
HOPKINSVILLE, KY 42240

HAFER
architects • designers • engineers

21 SE Third Street,
Suite 800
Evansville, IN 47708

T: 812.422.4187
F: 812.421.6776
www.haferdesign.com

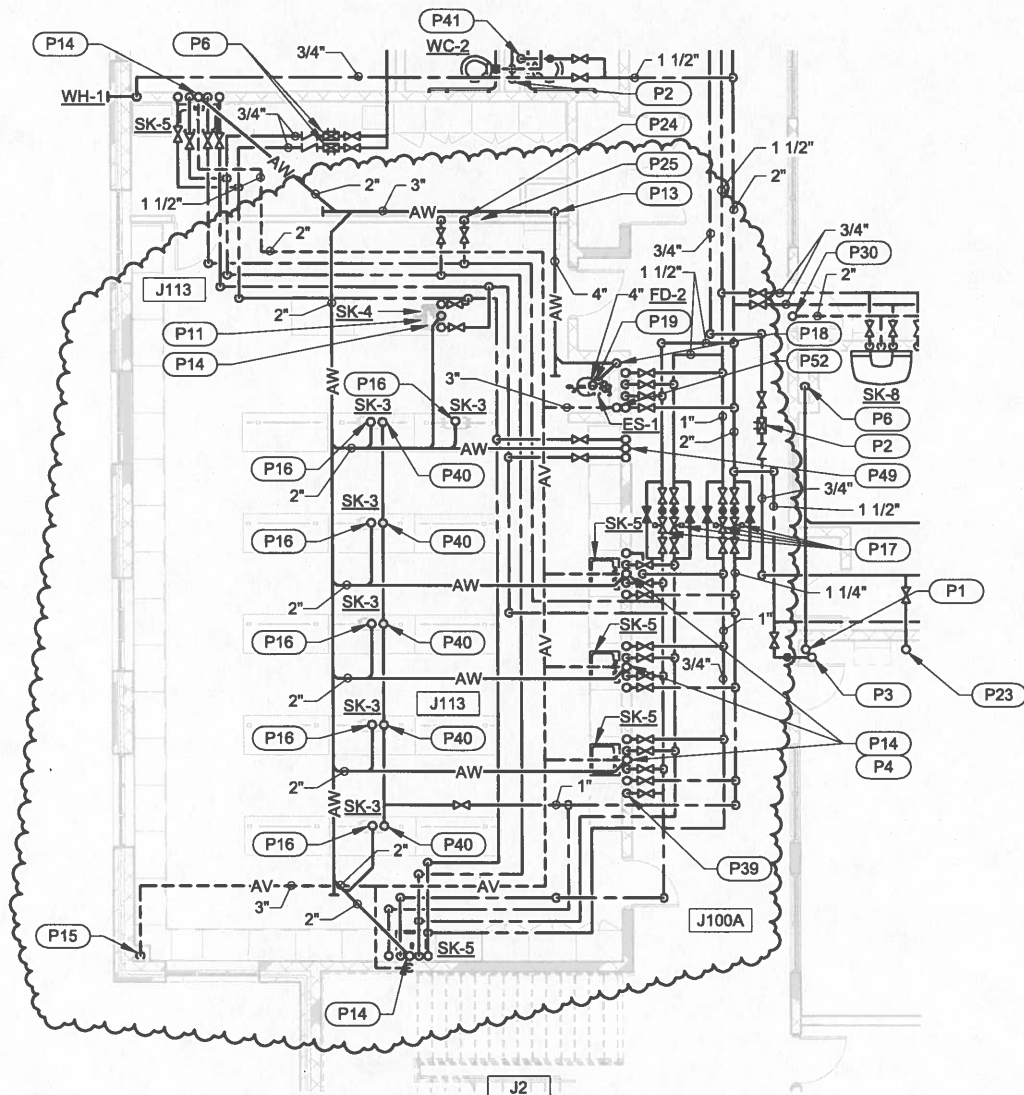
ARCHITECTS PROJECT NO. DATE:
2106-204 3/20/2024

TYPE OF DRAWING NO.

PR-13P7

PLAN NOTES:

- P4 2" AV DOWN TO FIXTURE.
- P11 1/2" CW AND 1/2" HW FROM BELOW.
- P16 NOTE NOT USED.
- P20 NOTE NOT USED.
- P25 NOTE NOT USED.
- P52 4" AV UP AND DOWN.



FIRST FLOOR PLUMBING PLAN - AREA J

1/8" = 1'-0"

HOPKINSVILLE - CHRISTIAN
COUNTY ACADEMY

KDE #: BG 22-104

5185 FT. CAMPBELL BLVD
HOPKINSVILLE, KY 42240

HAFER
architects • designers • engineers

21 SE Third Street,
Suite 800
Evansville, IN 47708

T: 812.422.4187
F: 812.421.6776
www.haferdesign.com

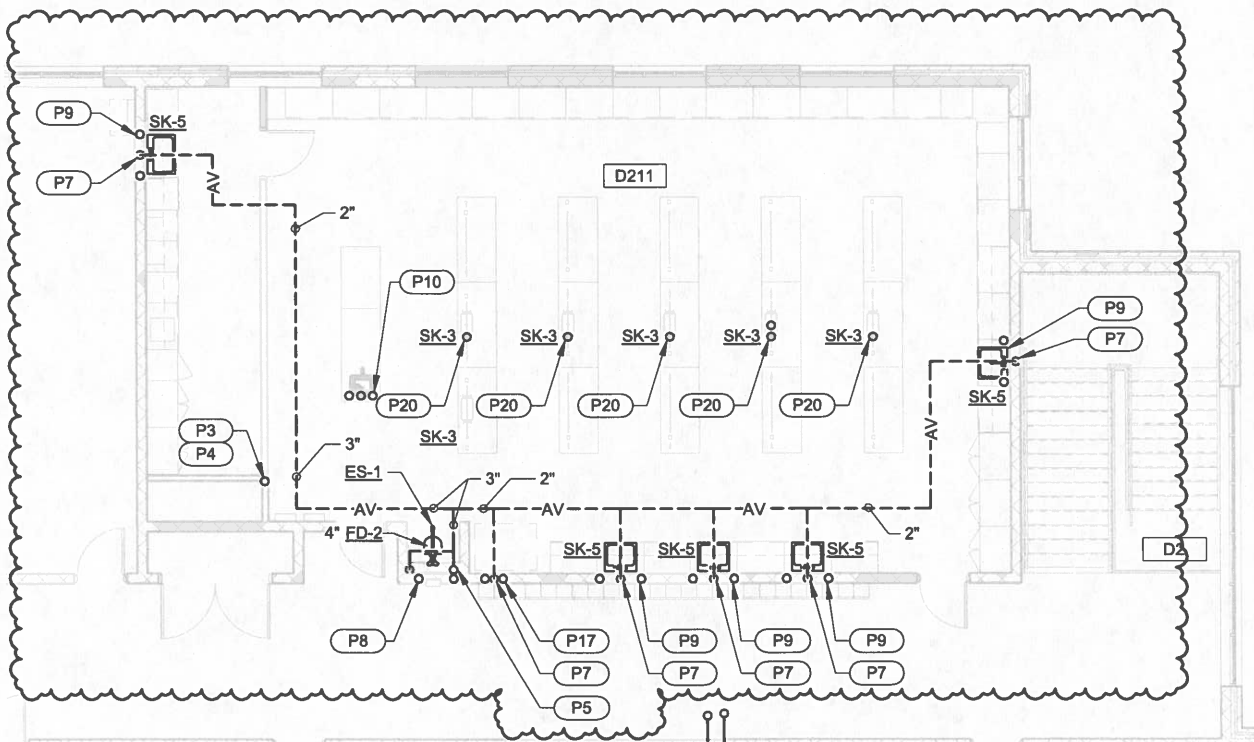
ARCHITECTS PROJECT NO. DATE:
2106-204 3/20/2024

TYPE OF DRAWING NO.

PR-13P8

PLAN NOTES:

- P1 NOTE NOT USED.
- P5 4" AV DOWN, 4" AV UP THRU ROOF.
- P7 2" AV DOWN TO FIXTURE.
- P10 1/2" HW, 1/2" CW TO FIXTURE FROM BELOW.



SECOND FLOOR PLUMBING PLAN - AREA D

1/8" = 1'-0"

HOPKINSVILLE - CHRISTIAN
COUNTY ACADEMY

KDE #: BG 22-104

5185 FT. CAMPBELL BLVD
HOPKINSVILLE, KY 42240

HAFFER
architects • designers • engineers

21 SE Third Street,
Suite 800
Evansville, IN 47708

T: 812.422.4187
F: 812.421.6776
www.hafferdesign.com

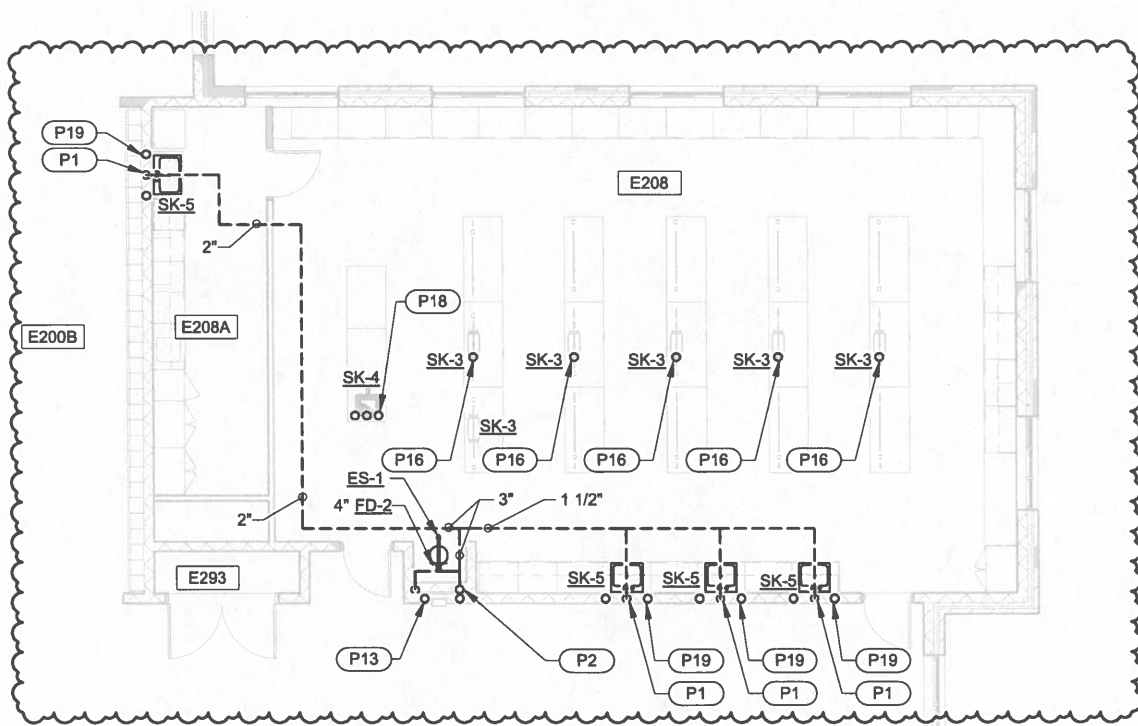
ARCHITECTS PROJECT NO.
2106-204 DATE:
3/20/2024

TYPE OF DRAWING NO.

PR-13P9

PLAN NOTES:

- (P1) 2" AV DOWN TO FIXTURE.
- (P2) 4" AV DOWN, 4" AV UP THRU ROOF.
- (P3) NOTE NOT USED.
- (P18) 1/2" HW AND 1/2" CW TO FIXTURE FROM BELOW.



SECOND FLOOR PLUMBING PLAN - AREA E

1/8" = 1'-0"

HOPKINSVILLE - CHRISTIAN
COUNTY ACADEMY

KDE #: BG 22-104

5185 FT. CAMPBELL BLVD
HOPKINSVILLE, KY 42240

HAFFER
architects • designers • engineers

21 SE Third Street,
Suite 800
Evansville, IN 47708
T: 812.422.4187
F: 812.421.6776
www.haferdesign.com

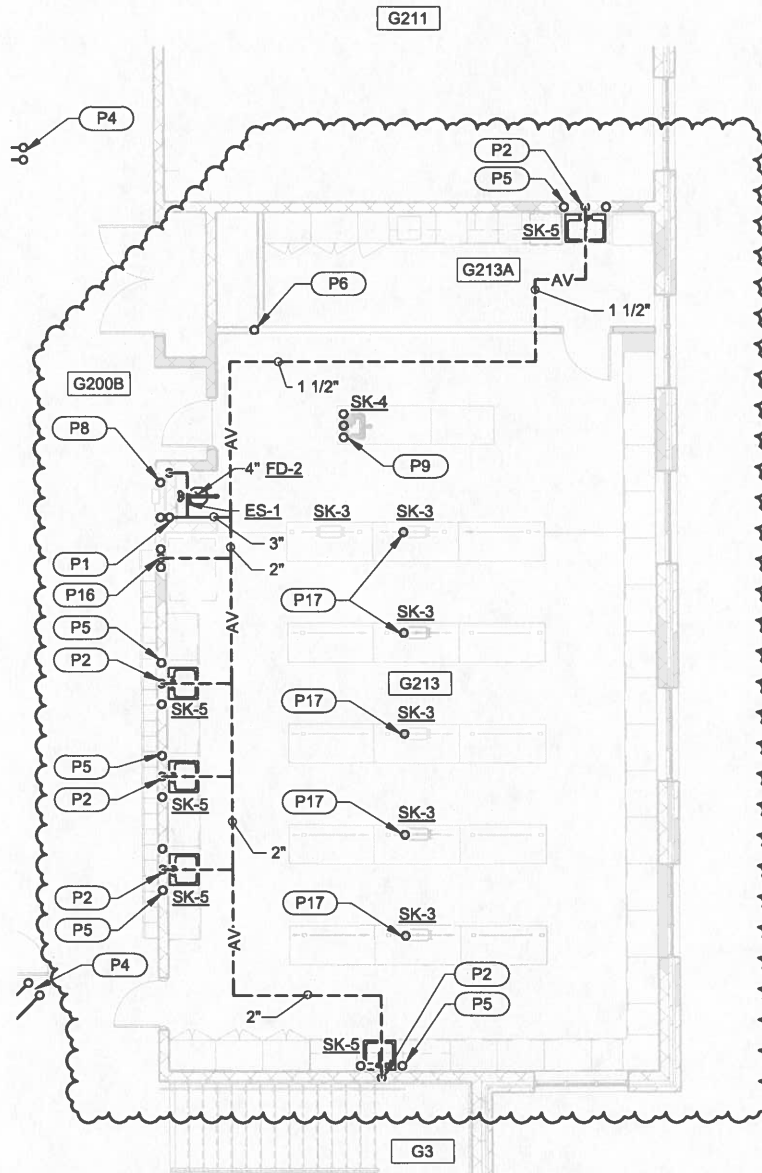
ARCHITECTS PROJECT NO. DATE:
2106-204 **3/20/2024**

TYPE OF DRAWING NO.

PR-13P10

PLAN NOTES:

- (P2) 2" AV DOWN TO FIXTURE.
- (P9) 1/2" HW AND 1/2" CW TO FIXTURE FROM BELOW.
- (P10) NOTE NOT USED.



SECOND FLOOR PLUMBING PLAN - AREA G

1/8" = 1'-0"

HOPKINSVILLE - CHRISTIAN
COUNTY ACADEMY

KDE #: BG 22-104

5185 FT. CAMPBELL BLVD
HOPKINSVILLE, KY 42240

HAFFER
architects • designers • engineers

21 SE Third Street,
Suite 800
Evansville, IN 47708
T: 812.422.4187
F: 812.421.6776
www.hafferdesign.com

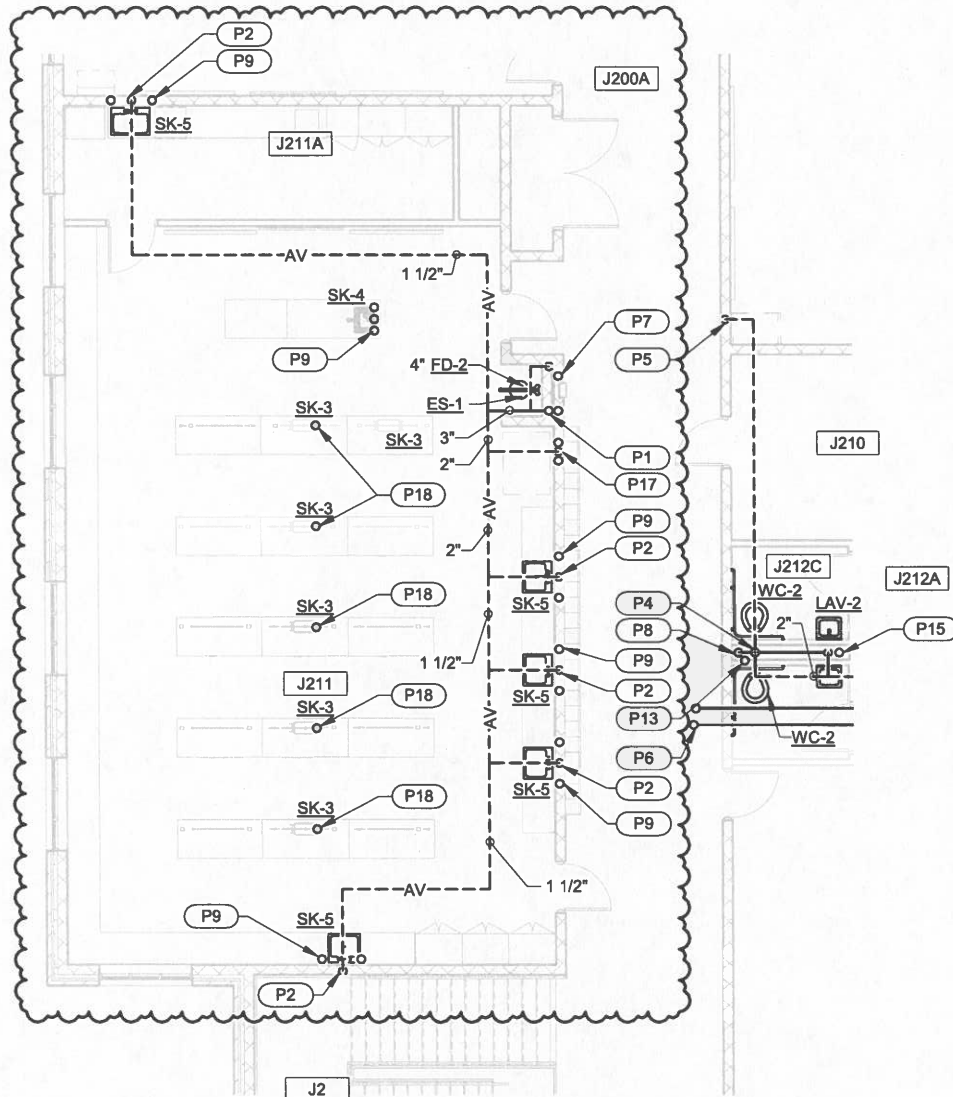
ARCHITECTS PROJECT NO. DATE:
2106-204 **3/20/2024**

TYPE OF DRAWING NO.

PR-13P11

PLAN NOTES:

- (P1) 4" AV DOWN, 4" AV UP THROUGH ROOF.
- (P2) 2" AV DOWN TO FIXTURE.
- (P10) NOTE NOT USED.
- (P11) NOTE NOT USED.



SECOND FLOOR PLUMBING PLAN - AREA J

1/8" = 1'-0"

HOPKINSVILLE - CHRISTIAN
COUNTY ACADEMY

KDE # : BG 22-104

5185 FT. CAMPBELL BLVD
HOPKINSVILLE, KY 42240

HAFER
architects • designers • engineers

21 SE Third Street,
Suite 800
Evansville, IN 47708

T: 812.422.4187
F: 812.421.6776
www.haferdesign.com

ARCHITECTS PROJECT NO. DATE:
2106-204 3/20/2024

TYPE OF DRAWING NO.

PR-13P12

**Christian County High School
PROPOSAL REQUEST PRICING SHEET
ALLIANCE JOB #22-033**

PROPOSED CHANGE REQUEST NO. 13 DATE 4/22/2024

DESCRIPTION _____

CONTRACTOR _____ BID PKG. _____

WORK DESCRIPTION remove the sinks from science labs D115, D 211, E108, E208, G115, G213,

A. UNIT PRICING FROM FORM OF PROPOSAL

1. UNIT PRICING	_____ QTY.	_____ U.P.	\$ -	TOTAL COST
2. UNIT PRICING	_____ QTY.	_____ U.P.	\$ -	TOTAL COST
3. UNIT PRICING	_____ QTY.	_____ U.P.	\$ -	TOTAL COST

B. MATERIAL

1. Credit	ITEM	_____ QTY.	_____ UNIT	\$ (70,257.00)
2.	ITEM	_____ QTY.	_____ UNIT	\$ -
3.	ITEM	_____ QTY.	_____ UNIT	\$ -

MATERIAL TOTAL \$ (70,257.00)

LABOR

1. Labor Credit	HOURS @	_____	\$/HR	\$ (3,660.00)
2.	HOURS @	_____	\$/HR	\$ -
3.	HOURS @	_____	\$/HR	\$ -

LABOR TOTAL \$ (3,660.00)

EQUIPMENT

EQUIPMENT TOTAL \$ -

MATERIAL, LABOR & EQUIPMENT SUBTOTAL \$ (73,917.00)

15% OVERHEAD/PROFIT MARK-UP \$ -

DEDUCT DPO (DIRECT PURCHASE ORDER) MATERIAL \$ -

TOTAL ADD/DEDUCT \$ (73,917.00)

NOTE: CONTRACTORS ARE TO USE UNIT PRICES WHERE APPLICABLE.

**Christian County High School
PROPOSAL REQUEST PRICING SHEET
ALLIANCE JOB #22-033**

PROPOSED CHANGE REQUEST NO. _____ DATE 5/29/2024

DESCRIPTION Added window sills

CONTRACTOR Atlas BID PKG. 123_124

WORK DESCRIPTION 17 Added sills at window types W6, W42

A. UNIT PRICING FROM FORM OF PROPOSAL

1. UNIT PRICING	_____ QTY.	_____ U.P.	\$ -	TOTAL COST
2. UNIT PRICING	_____ QTY.	_____ U.P.	\$ -	TOTAL COST
3. UNIT PRICING	_____ QTY.	_____ U.P.	\$ -	TOTAL COST

B. MATERIAL

1. Sills	ITEM	17 QTY.	UNIT	\$ 8,095.65
2. _____	ITEM	_____ QTY.	UNIT	\$ -
3. _____	ITEM	_____ QTY.	UNIT	\$ -

MATERIAL TOTAL \$ 8,095.65

LABOR

1. _____	55 HOURS @	\$ 75.00	\$/HR	\$ 4,125.00
2. _____	HOURS @	_____	\$/HR	\$ -
3. _____	HOURS @	_____	\$/HR	\$ -

LABOR TOTAL \$ 4,125.00

EQUIPMENT

EQUIPMENT TOTAL _____

MATERIAL, LABOR & EQUIPMENT SUBTOTAL \$ 12,220.65

15% OVERHEAD/PROFIT MARK-UP \$ 1,833.10

DEDUCT DPO (DIRECT PURCHASE ORDER) MATERIAL \$ -

TOTAL ADD/DEDUCT \$ 14,053.75

NOTE: CONTRACTORS ARE TO USE UNIT PRICES WHERE APPLICABLE.

FACPAC Contract Change Order

Supplemental Information Form (Ref# 60141)

Form Status: Saved

Tier 1 Project: Consolidated High School

BG Number: 22-104

Status: Active

District: Christian County (HB678)

Phase: Project Initiation (View Checklist)

Contract: The Atlas Companies , 0123, Laminate, Science and Architectural Casework

Type: CM Bid Package

Proposed

Change Order Number	3
Time Extension Required	No
Date Of Change Order	6/10/2024
Change Order Amount To Date	Decrease

Construction Contingency

Calculations below are project wide. Remaining negative Construction Contingency may require the submission of a revised BG1.

Current Approved Amount	\$6,320,436.60
Net Approved COs	\$392,962.39
Remaining After Approved COs	\$5,927,474.21
Net All COs	\$377,702.13
Remaining After All COs	\$5,942,734.47

This Requested Change Order Amount (\$59,863.25)

+/-

Change In A/E Fee This Change Order

+/-

Change In CM Fee This Change Order \$0.00

+/-

Remaining Construction Contingency \$5,942,734.47

Balance

Contract Change Requested By

Local Board of Education; Contractor

Contract Change Reason Code

Reduction of Scope

Change Order Description And Justification

Science room sink reduction. (17) Additional window sills at window types W6 and W42.

Cost Benefit To Owner

This will result in a cost savings to the owner.

Contract unit prices have been utilized No
to support the cost associated with this
change order.

Detailed Cost Breakdown

Contract unit prices have not been utilized, provide a detailed cost breakdown which separates labor, material, profit and overhead.

Detail Item	Amount	Percent of Total
Labor	\$465.00	-0.78%
Materials	(\$62,161.35)	103.84%
Profit and Overhead	\$1,833.10	-3.06%
Bond Insurance		0.00%
Cost Breakdown Total:	\$-59,863.25	
Cost for this Change Order supported by an alternate bid or competitive price quote	No	
Explain Why		
Executed contract with contractor.		

Change Order Supplemental Information Form Signature Page (Online Form Ref# 60141)

Architect

Date

Construction Manager

Date

Finance Officer

Date

Local Board of Education Designee

Date