

EverLine

Coatings and Services

RETHINK PAVEMENT MAINTENANCE

MERCER COUNTY SCHOOLS: GROUNDS AND MAINTENANCE FOR



SEALING PARKING LOTS



OUR TEAM



CHRIS WAY

OWNER

Chris brings a wealth of experience & enthusiasm to the daily life of **EverLine** as owner of the Central Kentucky region. With a background spanning engineering, sales, marketing, & business leadership in the medical technology and medical device industry, Chris provides a necessary & valuable expertise to **EverLine**.

Prior to joining the EverLine team, Chris worked for companies such as Ferno, Zoll, & Stryker. Chris holds 14 patents and has dedicated his professional career to serving our 1st Responders. He co-founded Stryker Emergency Care delivering innovative new products that have transformed pre-hospital patient handling.

Chris's commitment to **EverLine's** core values & driven principals is evident in his eagerness to bring the company's vision to life. He is passionate about creating an environment of growth and fostering a sense of community with both clients & employees. Emphasizing the importance of client interactions, Chris knows that this not only enhances the quality of their work but also strengthens the relationships they build. With his expertise, enthusiasm, and dedication, **EverLine Coatings and Services** is well-positioned to continue providing excellent pavement maintenance solutions while fostering strong bonds within the community they serve.



ANN MILLER

GENERAL MANAGER

As a results oriented manager in various industries including manufacturing, government, commercial and residential property management, Ann brings a unique combination of leadership experience to the team. Commitment and passion are strengths she uses to work to improve operations while meeting the challenges presented by the private, public, and governmental sectors.

As a proven visionary leader with successful projects to her credit, Ann will focus on both the team members and high-profile business clients with the exact same integrity and dedication. Ann believes that we must exist in a culture that focuses on safety management and preventative maintenance simultaneously. These together with **EverLine's** integrity-focused values are essential to corporate success.

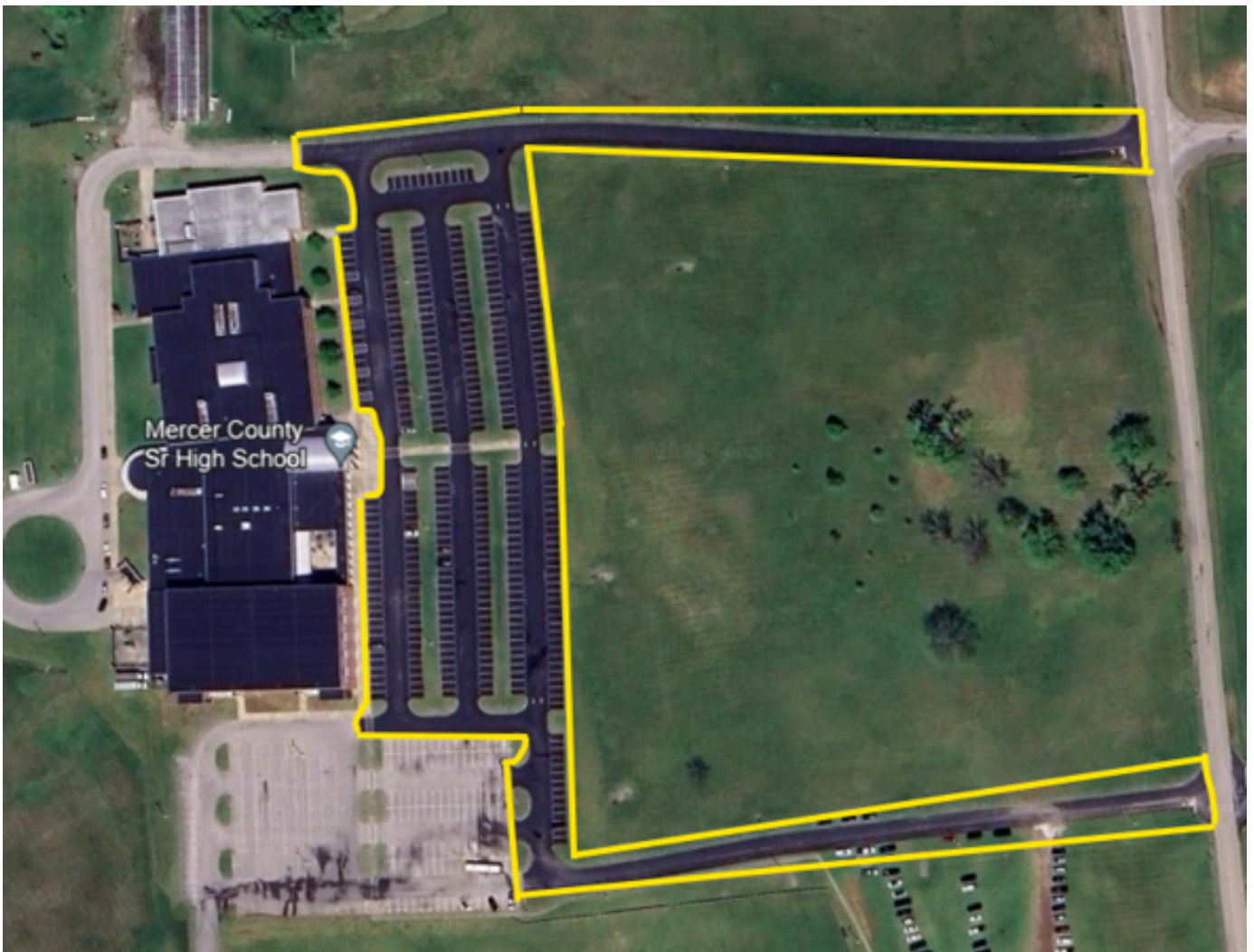




EverLine

Coatings and Services

SCOPE OF WORK: MCSH



Services Included: Crack Filling, Seal Coating, and Re-Striping of the area marked in Yellow



EverLine
Coatings and Services

Rethink Pavement Maintenance

EverLineCoatings.com

| 2



ASPHALT CRACK-FILLING SERVICES

Project Location: MCSH

DESCRIPTION	PRICE	QTY	SUBTOTAL
<input checked="" type="checkbox"/> Crack-Filling: Includes the preparation and filling of asphalt cracks using Direct Fire (DF) Crack Sealant.			\$1,221
Scope of Work: - Material: SealMaster CrackMaster Direct Fire Crack and Joint Sealant - Approximately 1,850 linear feet			
Service Notes: - Existing cracks to be cleaned out, prepared, and filled using our Direct Fire Crack Sealant. - Preparation includes the use of a high pressure heat-lance to blow out any rocks or debris, burn away any vegetation, and bring the asphalt up to temperature in order to prepare it to receive the new crack filling compound. - Includes the filling of: Existing cracks within noted scope that meet a minimum measurement of 1/8" in width, and 1/8" in depth. - Excludes any cracks larger than 3" in width or depth as cracking this severe requires more than general maintenance (Crack-Filling) can provide. Also excludes filling of cracks within 1 foot of an unrepaired pothole. - Clean-up done daily and in full upon completion.			
TOTAL			\$1,221





ASPHALT SEALCOATING SERVICES

Project Location: MCSH

DESCRIPTION	SUBTOTAL
<input checked="" type="checkbox"/> Premium Sealcoating:	\$26,350
<p>Scope of Work:</p> <ul style="list-style-type: none"> - Material: SealMaster Polymer Modified MasterSeal Ultra (PMM Ultra) 2lbs of Sand/Gallon - Includes <u>TWO FULL COATS</u> per the manufacturers recommendation - Approximately 155,000 square feet 	
<p>Service Notes:</p> <ul style="list-style-type: none"> - Preparation includes the blowing, sweeping, and oil spot priming of the application surface. - Price includes two (2) full coats as recommended by the sealant manufacturer. - We recommend all foot and vehicular traffic remain off of the surface for a minimum of 24 hours - Highly experienced and enthusiastic staff onsite at all times. Clean-up done daily and in full upon completion. 	
<p>TOTAL</p>	<p>\$26,350</p>





PROFESSIONAL LINE STRIPING SERVICES

Project Location: MCSH

DESCRIPTION	SUBTOTAL
<p><input checked="" type="checkbox"/> Line Striping - Repaint: Includes the repainting of existing markings.</p>	\$5,237
<p>Scope of Work:</p> <ul style="list-style-type: none"> - Paint: Sherwin Williams SetFast Water Base Traffic Paint - Includes the painting of standard parking stalls, arrows, and cross-walks in White - Includes the painting of stall numbers as designed in White - Includes the painting of arrows, stop bars, stencils, and associated lane lines at entrances in White - Includes the painting of handicap stalls, associated accessibility hatching, and stencils in HC Blue - Does not include the painting of parking blocks, curbing, or light pole bases unless noted. 	
<p>TOTAL</p>	<p>\$5,237</p>

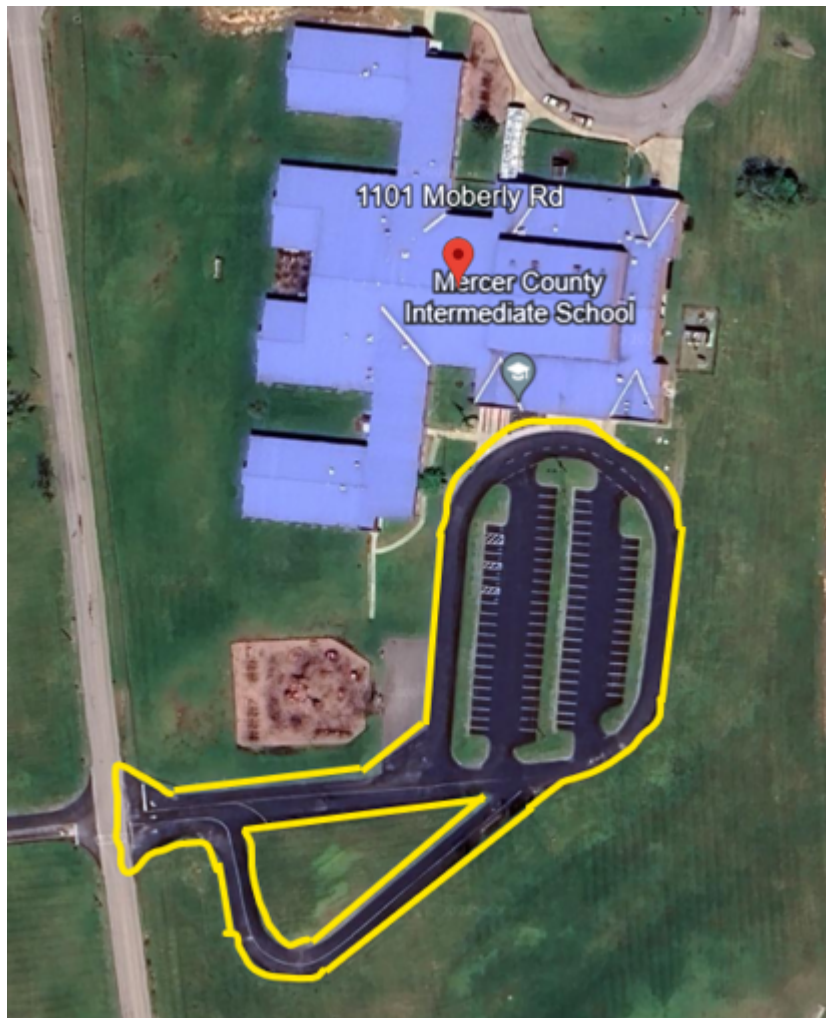




EverLine

Coatings and Services

SCOPE OF WORK: MCIS



Services Included: Crack Filling, Seal Coating, and Re-Striping of the area marked in Yellow





ASPHALT CRACK-FILLING SERVICES

Project Location: MCIS

DESCRIPTION	PRICE	QTY	SUBTOTAL
<input checked="" type="checkbox"/> Crack-Filling: Includes the preparation and filling of asphalt cracks using Direct Fire (DF) Crack Sealant.			\$1,436
Scope of Work: <ul style="list-style-type: none"> - Material: SealMaster CrackMaster Direct Fire Crack and Joint Sealant - Approximately 2,175 linear feet 			
Service Notes: <ul style="list-style-type: none"> - Existing cracks to be cleaned out, prepared, and filled using our Direct Fire Crack Sealant. - Preparation includes the use of a high pressure heat-lance to blow out any rocks or debris, burn away any vegetation, and bring the asphalt up to temperature in order to prepare it to receive the new crack filling compound. - Includes the filling of: Existing cracks within noted scope that meet a minimum measurement of 1/8" in width, and 1/8" in depth. - Excludes any cracks larger than 3" in width or depth as cracking this severe requires more than general maintenance (Crack-Filling) can provide. Also excludes filling of cracks within 1 foot of an unrepaired pothole. - Clean-up done daily and in full upon completion. 			
TOTAL			\$1,436





ASPHALT SEALCOATING SERVICES

Project Location: MCIS

DESCRIPTION	SUBTOTAL
<input checked="" type="checkbox"/> Premium Sealcoating:	\$10,583
<p>Scope of Work:</p> <ul style="list-style-type: none"> - Material: SealMaster Polymer Modified MasterSeal Ultra (PMM Ultra) 2lbs of Sand/Gallon - Includes TWO FULL COATS per the manufacturers recommendation - Approximately 62,250 square feet 	
<p>Service Notes:</p> <ul style="list-style-type: none"> - Preparation includes the blowing, sweeping, and oil spot priming of the application surface. - Price includes two (2) full coats as recommended by the sealant manufacturer. - We recommend all foot and vehicular traffic remain off of the surface for a minimum of 24 hours - Highly experienced and enthusiastic staff onsite at all times. Clean-up done daily and in full upon completion. 	
<p>TOTAL</p>	<p>\$10,583</p>





PROFESSIONAL LINE STRIPING SERVICES

Project Location: MCIS

DESCRIPTION	SUBTOTAL
<p><input checked="" type="checkbox"/> Line Striping - Repaint: Includes the repainting of existing markings.</p> <hr/> <p>Scope of Work:</p> <ul style="list-style-type: none"> - Paint: Sherwin Williams SetFast Water Base Traffic Paint - Includes the painting of standard parking stalls in White - Includes the painting of lane lines in White - Includes the painting of arrows, stop bars, stencils, and associated lane lines at entrance in White - Includes the painting of handicap stalls, associated accessibility hatching, and stencils in HC Blue - Does not include the painting of parking blocks, curbing, or light pole bases unless noted. 	<p>\$1,148</p>
TOTAL	\$1,148





EverLine

Coatings and Services

SCOPE OF WORK: MCES



Services Included: Crack Filling, Seal Coating, and Re-Striping of the area marked in Yellow





ASPHALT CRACK-FILLING SERVICES

Project Location: MCES

DESCRIPTION	PRICE	QTY	SUBTOTAL
<input checked="" type="checkbox"/> Crack-Filling: Includes the preparation and filling of asphalt cracks using Direct Fire (DF) Crack Sealant.			\$1,772
Scope of Work: <ul style="list-style-type: none"> - Material: SealMaster CrackMaster Direct Fire Crack and Joint Sealant - Approximately 2,685 linear feet 			
Service Notes: <ul style="list-style-type: none"> - Existing cracks to be cleaned out, prepared, and filled using our Direct Fire Crack Sealant. - Preparation includes the use of a high pressure heat-lance to blow out any rocks or debris, burn away any vegetation, and bring the asphalt up to temperature in order to prepare it to receive the new crack filling compound. - Includes the filling of: Existing cracks within noted scope that meet a minimum measurement of 1/8" in width, and 1/8" in depth. - Excludes any cracks larger than 3" in width or depth as cracking this severe requires more than general maintenance (Crack-Filling) can provide. Also excludes filling of cracks within 1 foot of an unrepaired pothole. - Clean-up done daily and in full upon completion. 			
TOTAL			\$1,772





ASPHALT SEALCOATING SERVICES

Project Location: MCES

DESCRIPTION	SUBTOTAL
<input checked="" type="checkbox"/> Premium Sealcoating:	\$20,783
<p>Scope of Work:</p> <ul style="list-style-type: none"> - Material: SealMaster Polymer Modified MasterSeal Ultra (PMM Ultra) 2lbs of Sand/Gallon - Includes <u>TWO FULL COATS</u> per the manufacturers recommendation - Approximately 122,250 square feet 	
<p>Service Notes:</p> <ul style="list-style-type: none"> - Preparation includes the blowing, sweeping, and oil spot priming of the application surface. - Price includes two (2) full coats as recommended by the sealant manufacturer. - We recommend all foot and vehicular traffic remain off of the surface for a minimum of 24 hours - Highly experienced and enthusiastic staff onsite at all times. Clean-up done daily and in full upon completion. 	
<p>TOTAL</p>	<p>\$20,783</p>





PROFESSIONAL LINE STRIPING SERVICES

Project Location: MCES

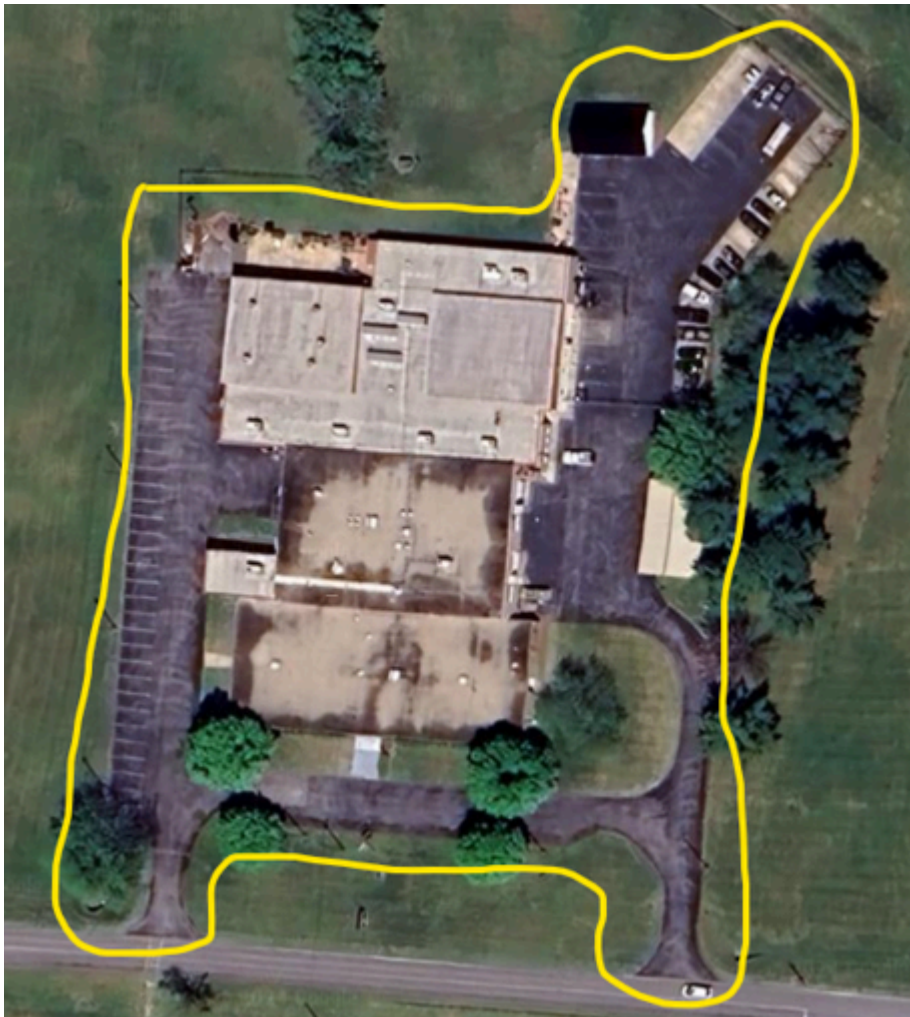
DESCRIPTION	SUBTOTAL
<p><input checked="" type="checkbox"/> Line Striping - Repaint: Includes the repainting of existing markings.</p> <p>Scope of Work:</p> <ul style="list-style-type: none"> - Paint: Sherwin Williams SetFast Water Base Traffic Paint - Includes the painting of standard parking stalls and cross-walks in White - Includes the painting of lane lines and arrows in White - Includes the painting of arrows and associated lane lines at entrances in White - Includes the painting of handicap stalls, associated accessibility hatching, and stencils in HC Blue - Does not include the painting of parking blocks, curbing, or light pole bases unless noted. 	<p>\$1,882</p>
TOTAL	\$1,882





EverLine
Coatings and Services

SCOPE OF WORK: TRAILBLAZER ACADEMY



Services Included: Crack Filling, Seal Coating, and Re-Striping of the area marked in Yellow





ASPHALT CRACK-FILLING SERVICES

Project Location: Trailblazer Academy

DESCRIPTION	PRICE	QTY	SUBTOTAL
<input checked="" type="checkbox"/> Crack-Filling: Includes the preparation and filling of asphalt cracks using Direct Fire (DF) Crack Sealant.			\$845
Scope of Work: <ul style="list-style-type: none"> - Material: SealMaster CrackMaster Direct Fire Crack and Joint Sealant - Approximately 1,278 linear feet 			
Service Notes: <ul style="list-style-type: none"> - Existing cracks to be cleaned out, prepared, and filled using our Direct Fire Crack Sealant. - Preparation includes the use of a high pressure heat-lance to blow out any rocks or debris, burn away any vegetation, and bring the asphalt up to temperature in order to prepare it to receive the new crack filling compound. - Includes the filling of: Existing cracks within noted scope that meet a minimum measurement of 1/8" in width, and 1/8" in depth. - Excludes any cracks larger than 3" in width or depth as cracking this severe requires more than general maintenance (Crack-Filling) can provide. Also excludes filling of cracks within 1 foot of an unrepaired pothole. - Clean-up done daily and in full upon completion. 			
TOTAL			\$845





ASPHALT SEALCOATING SERVICES

Project Location: Trailblazer Academy

DESCRIPTION	SUBTOTAL
<input checked="" type="checkbox"/> Premium Sealcoating:	\$8,840
<p>Scope of Work:</p> <ul style="list-style-type: none"> - Material: SealMaster Polymer Modified MasterSeal Ultra (PMM Ultra) 2lbs of Sand/Gallon - Includes <u>TWO FULL COATS</u> per the manufacturers recommendation - Approximately 52,000 square feet 	
<p>Service Notes:</p> <ul style="list-style-type: none"> - Preparation includes the blowing, sweeping, and oil spot priming of the application surface. - Price includes two (2) full coats as recommended by the sealant manufacturer. - We recommend all foot and vehicular traffic remain off of the surface for a minimum of 24 hours - Highly experienced and enthusiastic staff onsite at all times. Clean-up done daily and in full upon completion. 	
<p>TOTAL</p>	<p>\$8,840</p>





PROFESSIONAL LINE STRIPING SERVICES

Project Location: Trailblazer Academy

DESCRIPTION	SUBTOTAL
<p><input checked="" type="checkbox"/> Line Striping - Repaint: Includes the repainting of existing markings.</p>	\$814
<p>Scope of Work:</p> <ul style="list-style-type: none"> - Paint: Sherwin Williams SetFast Water Base Traffic Paint - Includes the painting of standard parking stalls in White as designed - Does not include the painting of parking blocks, curbing, or light pole bases unless noted. 	
<p>TOTAL</p>	<p>\$814</p>





EverLine

Coatings and Services

SCOPE OF WORK: KMS



Services Included: Crack Filling, Seal Coating, and Line Striping of the areas marked in Yellow





ASPHALT CRACK-FILLING SERVICES

Project Location: KMS

DESCRIPTION	PRICE	QTY	SUBTOTAL
<input checked="" type="checkbox"/> Crack-Filling: Includes the preparation and filling of asphalt cracks using Direct Fire (DF) Crack Sealant.			\$1,584
Scope of Work: <ul style="list-style-type: none"> - Material: SealMaster CrackMaster Direct Fire Crack and Joint Sealant - Approximately 2,400 linear feet 			
Service Notes: <ul style="list-style-type: none"> - Existing cracks to be cleaned out, prepared, and filled using our Direct Fire Crack Sealant. - Preparation includes the use of a high pressure heat-lance to blow out any rocks or debris, burn away any vegetation, and bring the asphalt up to temperature in order to prepare it to receive the new crack filling compound. - Includes the filling of: Existing cracks within noted scope that meet a minimum measurement of 1/8" in width, and 1/8" in depth. - Excludes any cracks larger than 3" in width or depth as cracking this severe requires more than general maintenance (Crack-Filling) can provide. Also excludes filling of cracks within 1 foot of an unrepaired pothole. - Clean-up done daily and in full upon completion. 			
TOTAL			\$1,584





ASPHALT SEALCOATING SERVICES

Project Location: KMS

DESCRIPTION	SUBTOTAL
<input checked="" type="checkbox"/> Premium Sealcoating:	\$12,835
<p>Scope of Work:</p> <ul style="list-style-type: none"> - Material: SealMaster Polymer Modified MasterSeal Ultra (PMM Ultra) 2lbs of Sand/Gallon - Includes <u>TWO FULL COATS</u> per the manufacturers recommendation - Approximately 75,500 square feet 	
<p>Service Notes:</p> <ul style="list-style-type: none"> - Preparation includes the blowing, sweeping, and oil spot priming of the application surface. - Price includes two (2) full coats as recommended by the sealant manufacturer. - We recommend all foot and vehicular traffic remain off of the surface for a minimum of 24 hours - Highly experienced and enthusiastic staff onsite at all times. Clean-up done daily and in full upon completion. 	
<p>TOTAL</p>	<p>\$12,835</p>





PROFESSIONAL LINE STRIPING SERVICES

Project Location: KMS

DESCRIPTION	SUBTOTAL
<p><input checked="" type="checkbox"/> Line Striping - Repaint: Includes the repainting of existing markings.</p> <hr/> <p>Scope of Work:</p> <ul style="list-style-type: none"> - Paint: Sherwin Williams SetFast Water Base Traffic Paint - Includes the painting of standard parking stalls in White - Includes the painting of lane lines, stencils and arrows as designed in White - Includes the painting of curbing in Yellow - Includes the painting of handicap stalls, associated accessibility hatching, and stencils in HC Blue - Does not include the painting of parking blocks or light pole bases unless noted. 	<p>\$1,093</p>
TOTAL	\$1,093

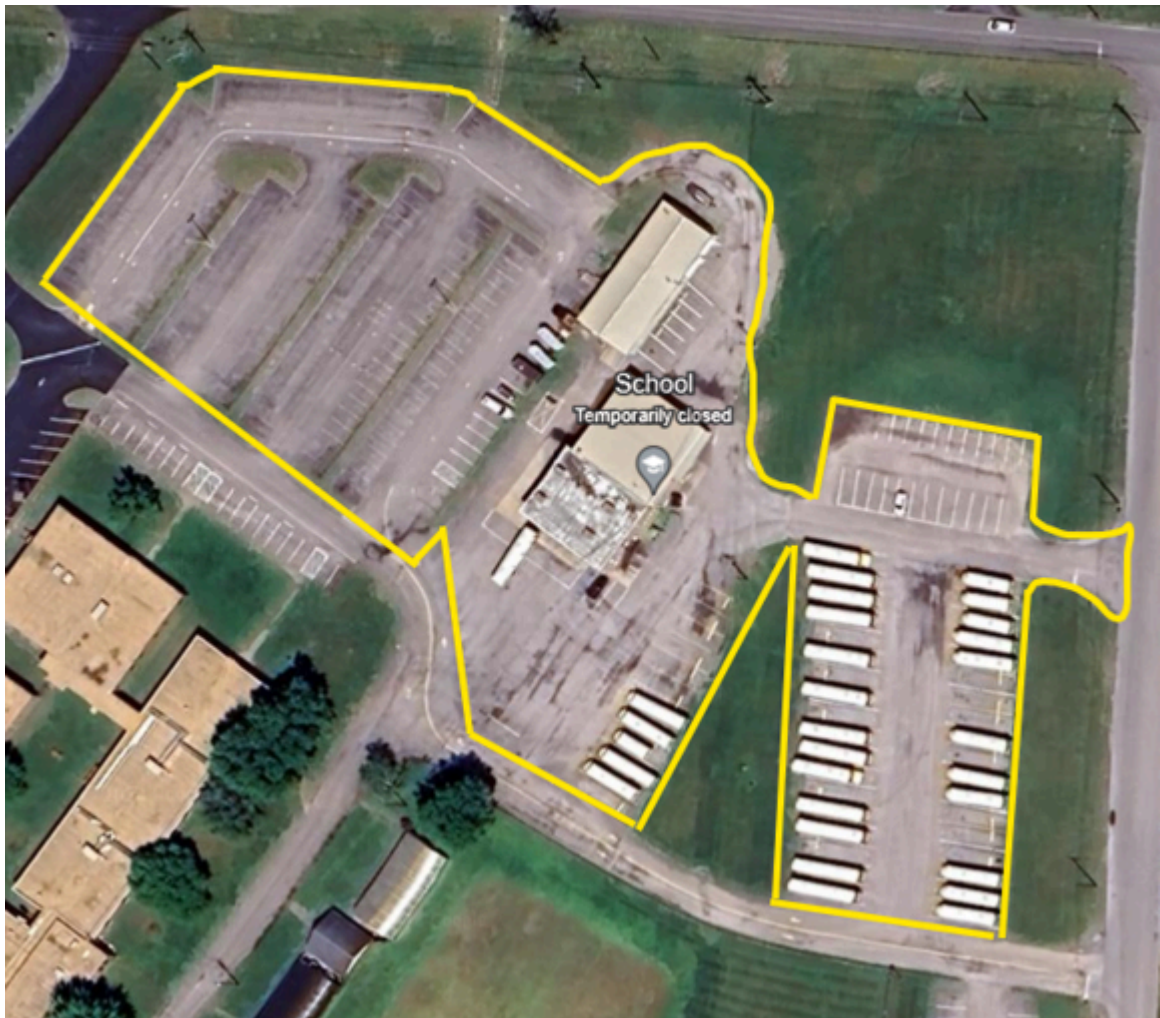




EverLine

Coatings and Services

SCOPE OF WORK: BUS GARAGE/MAINT.



Services Included: Crack Filling, Seal Coating, and Re-Striping of the area marked in Yellow





ASPHALT CRACK-FILLING SERVICES

Project Location: Bus Garage/Maintenance

DESCRIPTION	PRICE	QTY	SUBTOTAL
-------------	-------	-----	----------

<input checked="" type="checkbox"/> Crack-Filling: Includes the preparation and filling of asphalt cracks using Direct Fire (DF) Crack Sealant.			\$1,168
-----------------------------------------------------------------------------------------------------------------------------------------------------------	--	--	---------

- Scope of Work:**
- Material: **SealMaster CrackMaster Direct Fire Crack and Joint Sealant**
 - Approximately 1,770 linear feet

- Service Notes:**
- Existing cracks to be cleaned out, prepared, and filled using our Direct Fire Crack Sealant.
 - Preparation includes the use of a high pressure heat-lance to blow out any rocks or debris, burn away any vegetation, and bring the asphalt up to temperature in order to prepare it to receive the new crack filling compound.
 - Includes the filling of: Existing cracks within noted scope that meet a minimum measurement of 1/8" in width, and 1/8" in depth.
 - Excludes any cracks larger than 3" in width or depth as cracking this severe requires more than general maintenance (Crack-Filling) can provide. Also excludes filling of cracks within 1 foot of an unrepaired pothole.
 - Clean-up done daily and in full upon completion.

TOTAL			\$1,168
--------------	--	--	----------------





ASPHALT SEALCOATING SERVICES

Project Location: Bus Garage/Maintenance

DESCRIPTION	SUBTOTAL
<input checked="" type="checkbox"/> Premium Sealcoating:	\$23,290
<p>Scope of Work:</p> <ul style="list-style-type: none"> - Material: SealMaster Polymer Modified MasterSeal Ultra (PMM Ultra) 2lbs of Sand/Gallon - Includes <u>TWO FULL COATS</u> per the manufacturers recommendation - Approximately 137,000 square feet 	
<p>Service Notes:</p> <ul style="list-style-type: none"> - Preparation includes the blowing, sweeping, and oil spot priming of the application surface. - Price includes two (2) full coats as recommended by the sealant manufacturer. - We recommend all foot and vehicular traffic remain off of the surface for a minimum of 24 hours - Highly experienced and enthusiastic staff onsite at all times. Clean-up done daily and in full upon completion. 	
<p>TOTAL</p>	<p>\$23,290</p>





PROFESSIONAL LINE STRIPING SERVICES

Project Location: Bus Garage/Maintenance

DESCRIPTION	SUBTOTAL
<p><input checked="" type="checkbox"/> Line Striping - Repaint: Includes the repainting of existing markings.</p>	\$3,023
<p>Scope of Work:</p> <ul style="list-style-type: none"> - Paint: Sherwin Williams SetFast Water Base Traffic Paint - Includes the painting of standard parking stalls in White - Includes the painting of lane lines, stop bars, hatching, arrows, and bus stall numbers in White - Includes the painting of bus parking blocks in Yellow - Does not include the painting of curbing or light pole bases unless noted. 	
<p>TOTAL</p>	<p>\$3,023</p>





EverLine

Coatings and Services

PER LOCATION PRICING

DESCRIPTION	SUBTOTAL
<input checked="" type="checkbox"/> MCSH: 1124 Moberly Rd Crack Fill, Seal Coat (PMM Ultra 2 Coats), Re-Stripe (SW HotLine Water Base)	\$32,808
<input checked="" type="checkbox"/> MCIS: 1101 Moberly Rd Crack Fill, Seal Coat (PMM Ultra 2 Coats), Re-Stripe (SW HotLine Water Base)	\$13,167
<input checked="" type="checkbox"/> MCES: 741 Tapp Rd Crack Fill, Seal Coat (PMM Ultra 2 Coats), Re-Stripe (SW HotLine Water Base)	\$24,437
<input checked="" type="checkbox"/> Trailblazer Academy: 661 Tapp Rd Crack Fill, Seal Coat (PMM Ultra 2 Coats), Re-Stripe (SW HotLine Water Base)	\$10,499
<input checked="" type="checkbox"/> KMS: 937 Moberly Rd Crack Fill, Seal Coat (PMM Ultra 2 Coats), Re-Stripe (SW HotLine Water Base)	\$15,512
<input checked="" type="checkbox"/> Bus Garage/Maintenance: 937 Moberly Rd Crack Fill, Seal Coat (PMM Ultra 2 Coats), Re-Stripe (SW HotLine Water Base)	\$27,481
TOTAL	\$123,904



AGREEMENT

In order for us to provide the best service at the best possible price, we request our clients assistance in...

- Having work areas clean and free of debris, tools or obstacles before our arrival - This ensures efficient production of our crews.
- Irrigation or sprinkler systems turned off before and during our scheduled visit.
- Adequate lighting turned on for the entirety of our scheduled visit.
- Ensuring the site is a safe working environment (according to OH&S standards) for our team members.

All work will be completed as per the Scope of Work provided to EverLine Coatings.

We are here to work with you! If you are unable to accommodate the above requirements, please let us know before our scheduled visit so we can make necessary adjustments.

If our crews arrive on site and any of the above requirements are not met there may be additional fees charged above the quoted amount.

Please feel free to contact us if you have any questions or if there is anything else we can add to make this a great experience.

We look forward to working with you!

EverLine Coatings

 SIGNATURE
Chris Way

Chris Way |

Mercer County Schools

 SIGNATURE
Will Carlton

Will Carlton | *Facilities Director*

Payment due upon completion of Service. For payment we accept Check, E-transfer, and Credit Cards. 3% Fee applies to credit card transactions. Interest at 2.00% per month (24.00% per annum) will be charged on accounts over 30 Days.

