



May 20, 2024 Design and Construction Update





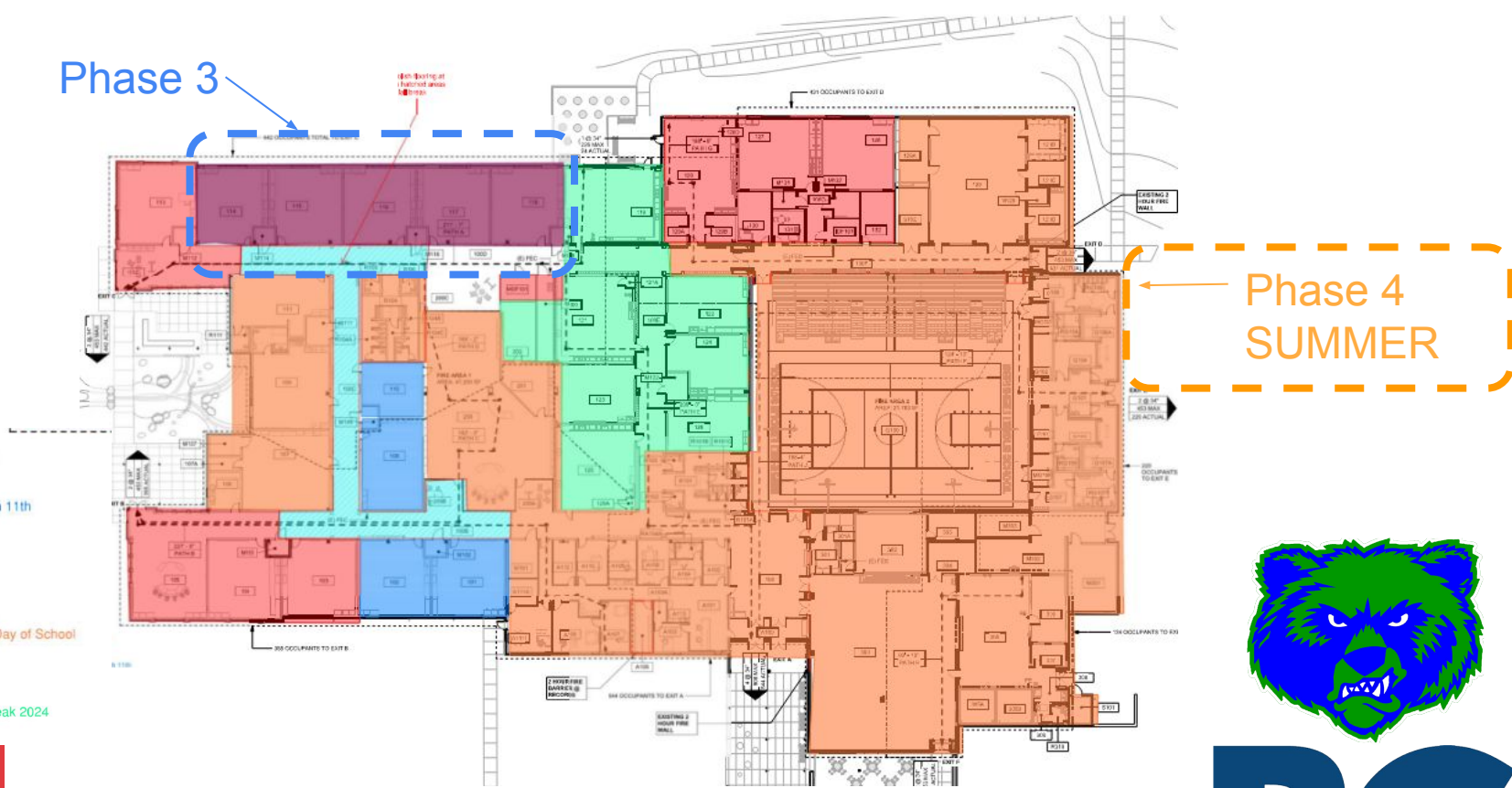
MOVING FORWARD

Bernheim Middle School - Construction



studio kremer architects

Phase 3



MOVING FORWARD

Bernheim Middle School - Construction Summer Phase 4 Beginning



studio kremer architects



Bernheim Middle School - Construction





Bernheim Middle School - Construction



studio kremer architects



BC

MOVING FORWARD



Bernheim Middle School - Construction





studio kremer architects

Bernheim Middle School - Construction



MOVING FORWARD

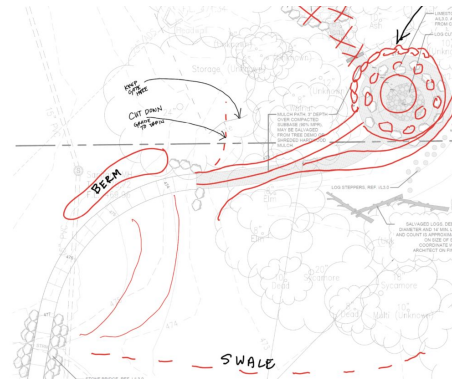
Board Consent Items

Change Order #12 – Added Administration Refrigerators - Cost: \$1,763.00 and \$628 Deduct for Unused Material

Bernheim Administration requested two refrigerators in the Administration suite. This resulted in added electrical work and a credit on omitted casework where the refrigerator would be located. Work can commence with trades already on site and maintain the current Construction Schedule.

Change Order #13 – Outdoor Classroom Adjustment - Cost: \$4,704.00

The area specified for the Outdoor classroom in the forest area on Bernheim's campus was holding water and long-term drainage was a concern. To address this, the landscape architect, SWT, revised the location of the classroom along with swale locations to have the outdoor classroom drain appropriately. This change order includes both added work and credits due to the location change.



Bernheim Middle School - Construction



Board Consent Items

Change Order 14- Added CMU Veneer at Cafeteria - Cost: \$11,502.00

The parapet wall is taller than documented in original documents - as a result, the Contractor and Architect recommended the addition of 1-2 courses of the polished CMU block to finish out the wall to the top of the parapet. This maintains design intent of the front entrance wall along the cafeteria and outdoor eating area. Work can commence with trades already on site and maintain the current Construction Schedule.

Change Order 15 - Kitchen Floor Demo and Equipment Labor - Cost: \$10,798.00

BCPS Facilities and Food Service requested all new quarry tile floor and additional floor protection and labor to move kitchen equipment that is planned to remain. This Change Order includes the cost of added labor as well as the labor for demolition of the entire kitchen floor quarry tile. Work can commence with trades already on site and maintain the current Construction Schedule.



studio kremer architects

Bernheim Middle School - Construction



BC

MOVING FORWARD

Board Consent Items

Change Order 16 - Exposed Ductwork in Flex Room - Cost: \$3,834.00

The ductwork that serves Flex Classroom 105 is in an exposed area - Design Intent calls for all exposed ductwork to be the spiral type that is painted. We asked Calhoun to price the work to replace the insulated square duct with spiral double wall. Currently Flex Room 112 has the painted spiral duct. **Work involved with this Change Order includes replacement of work already in place, therefore, the Design Team will cover the cost of the labor, overhead and profit and taxes to offset the cost burden to the District.** The only added cost to the district is for the spiral duct material and paint as requested with this Changer Order. COR 12 includes a breakout of costs the Design Team will cover versus Bullitt County.



MOVING FORWARD

Bernheim Middle School - Construction



studio kremer architects

Furniture Change Order

MBI has prepared the costs and floor plans of the added furniture requests and alterations at Bernheim – these changes include:

1. Adjustments to the Layout in Room 107 to revise to the Career Lab
2. Adjustments to the Layout in Room 108 to make that classroom the STEM lab.
3. Added the chairs with Backs at two of the science labs, per the science teachers' request.
4. Added three more fish shape tables to every classroom – please note, some of these tables were already in the furniture order since Classroom 124 was removed, that furniture got redistributed to other rooms.
5. Added shelving to the new storage room in the 6th grade hallway.

The total cost is \$82, 641.32 for the additional furniture, freight and delivery.



Bernheim Middle School - Construction



MOVING FORWARD



Project Contingency & Allowances

Project Contingency Remaining \$1,353,048.02

Allowances Balances

- 1.) Asbestos Abatement & Testing \$29,248.54;**
- 2.) Site Elec and Comm Connections \$20,000**
- 3.) Soil Stabilization \$40,000**
- 4.) Right of Way at Entrance \$7,500.00**



studio kremer architects

Bernheim Middle School - Construction



BC

MOVING FORWARD

DO IT...THE
CHARGER WAY!

MATH WING >

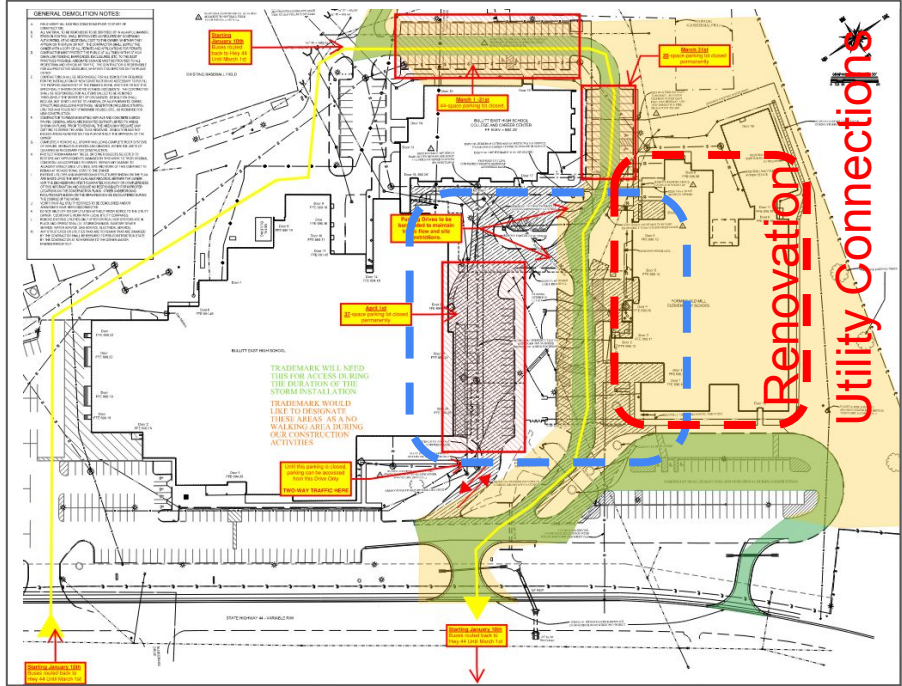
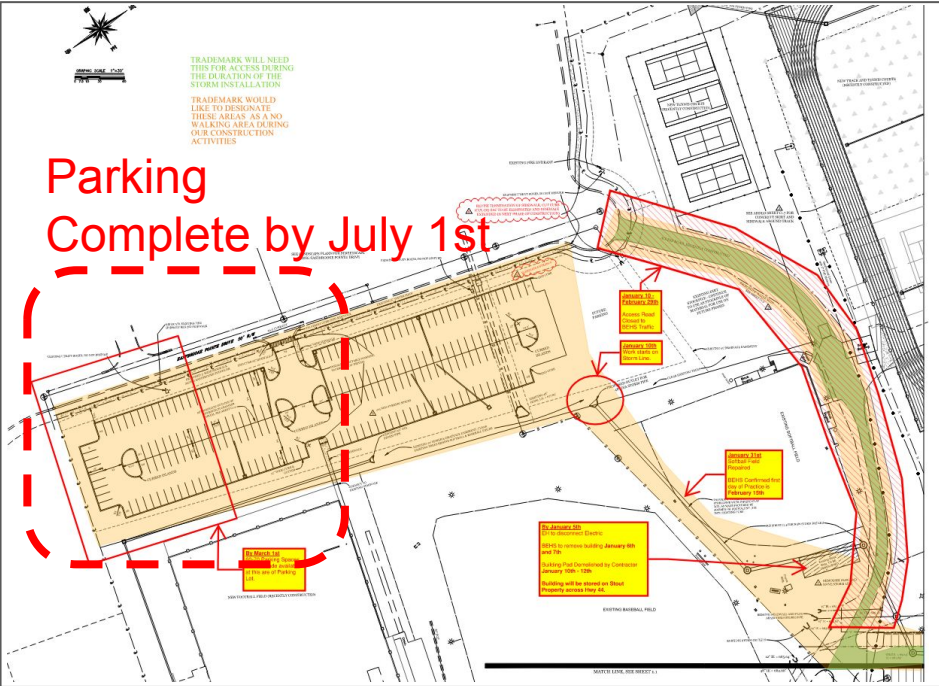


MOVING FORWARD

Bullitt East High School - Construction



studio kremer architects



Fine Arts Addition Starts after May 17th



Bullitt East High School
Construction





studio kremer architects

Bullitt East High School Construction



MOVING FORWARD



studio kremer architects

Bullitt East High School Construction



MOVING FORWARD

Board Consent Items

Change Order 05 - *Found Condition* - Roof Structure and Duct Routing at Resource Rooms

\$18,498.33

After selective ceiling demolition around the Resource Rooms 824 and 809, it was found that the duct routing was not routed as documented in the 2019 energy savings project and roof slopes were different than original drawings indicated. As a result, additional steel shims were added and beam sizes changed to accommodate existing roof slopes. Also, the ductwork above room 824 needed to be modified to match design intent. This cost addresses both found conditions.

Work covered under this change order includes the following:

- COR#9 - Duct Conflicts at Resource Rooms
- COR#10 - Steel Revisions for Sloped Bearing Conditions



studio kremer architects

**Bullitt East High School
Construction**



MOVING FORWARD

Project Contingency & Allowances

Project Contingency Remaining \$3,628,735.99

Allowances Balances

- 1.) Site Elec and Comm Connections \$20,000
- 2.) Unsuitable Soil Stabilization \$100,000
- 4.) Legacy BEHS Monument Sign \$10,000.00



studio kremer architects

**Bullitt East High School
Construction**



MOVING FORWARD



studio kremer architects

Phase 2 Athletics & Field Houses - Design Development

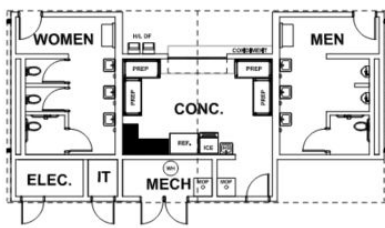
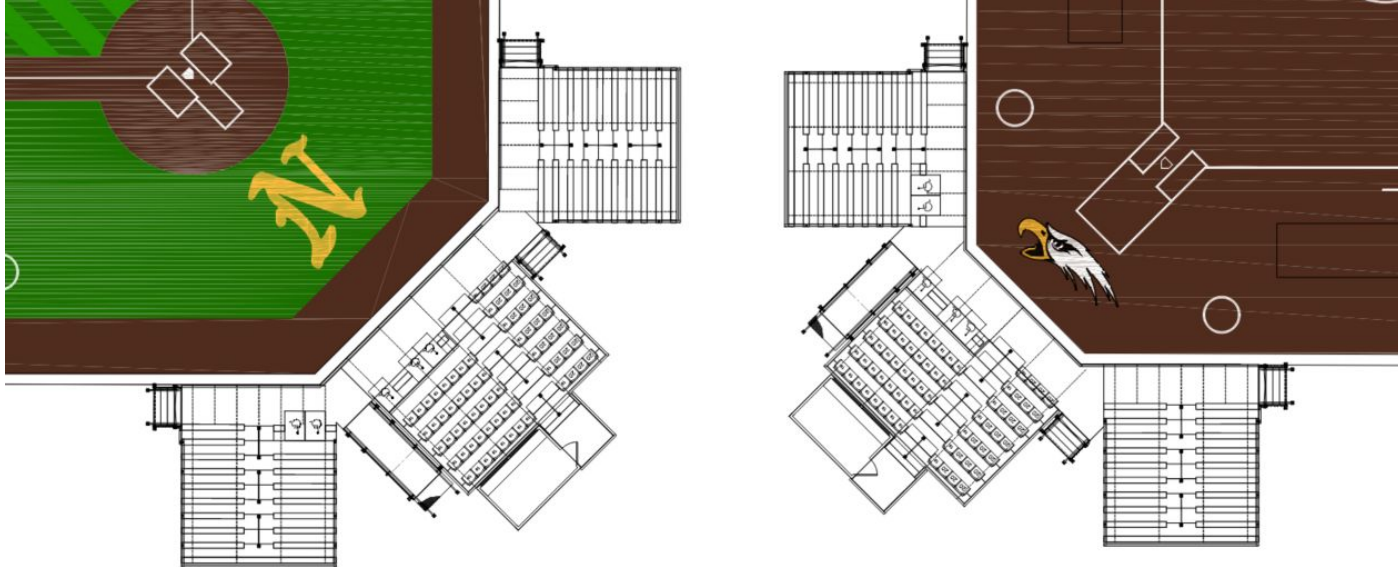


April	30	<i>Design Team Provide 75% CD Drawings and Specifications for Internal & BCPS Review</i>
May	13	BCPS Work Session <i>Request Board Approval of DD BG-2 and BG-3</i>
	20	BCPS Board Meeting
June	5	BCPS Work Session <i>(Rescheduled from June 10th)</i>
	7	<u>Submit CD Package for Board Agenda Inclusion by 12:00 pm</u>
	17	BCPS Board Meeting <i>Request Board Approval of CD and Bid Release</i> <i>COOP Motz Agreement Complete</i> ← <i>COOP Toadvine Agreement Complete</i> ←
	19	<u>Release for Bid / Submit for Permits</u> >4.5 Weeks to Bid Opening
	26	Pre-Bid Conference
July	19	BID OPENING DATE
	22	BCPS Board Meeting - <i>Update Board on Bid Results</i> <i>Contract Due Diligence by Design Team 22nd -26th</i>
		- REQUEST FOR SPECIAL BOARD MEETING -
	29	SPECIAL BOARD MEETING - <i>Request Board Approval of GC Contract</i>
	30	<u>Notice to Proceed; Start Construction</u>



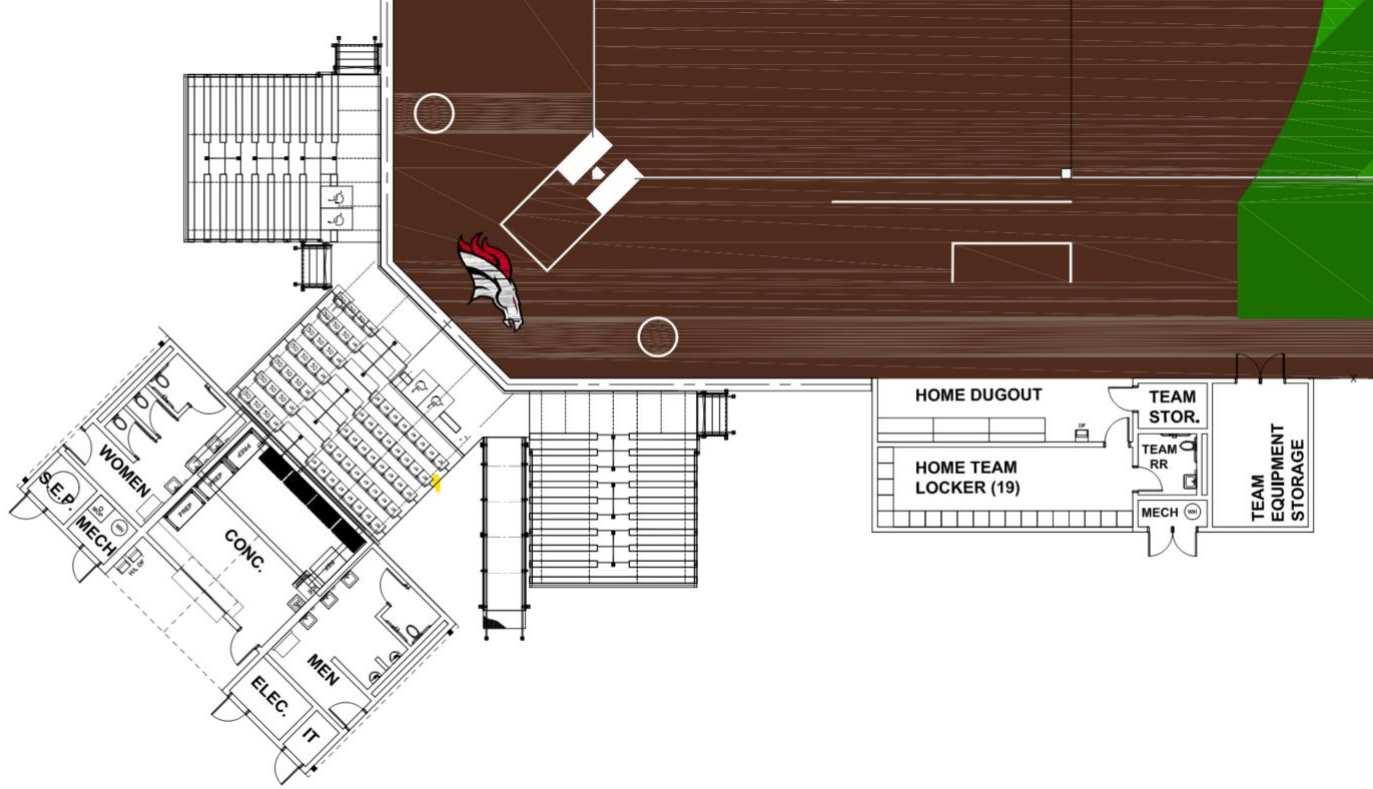
Phase 2 Athletics and Field Houses Construction Documents - Schedule for Bid





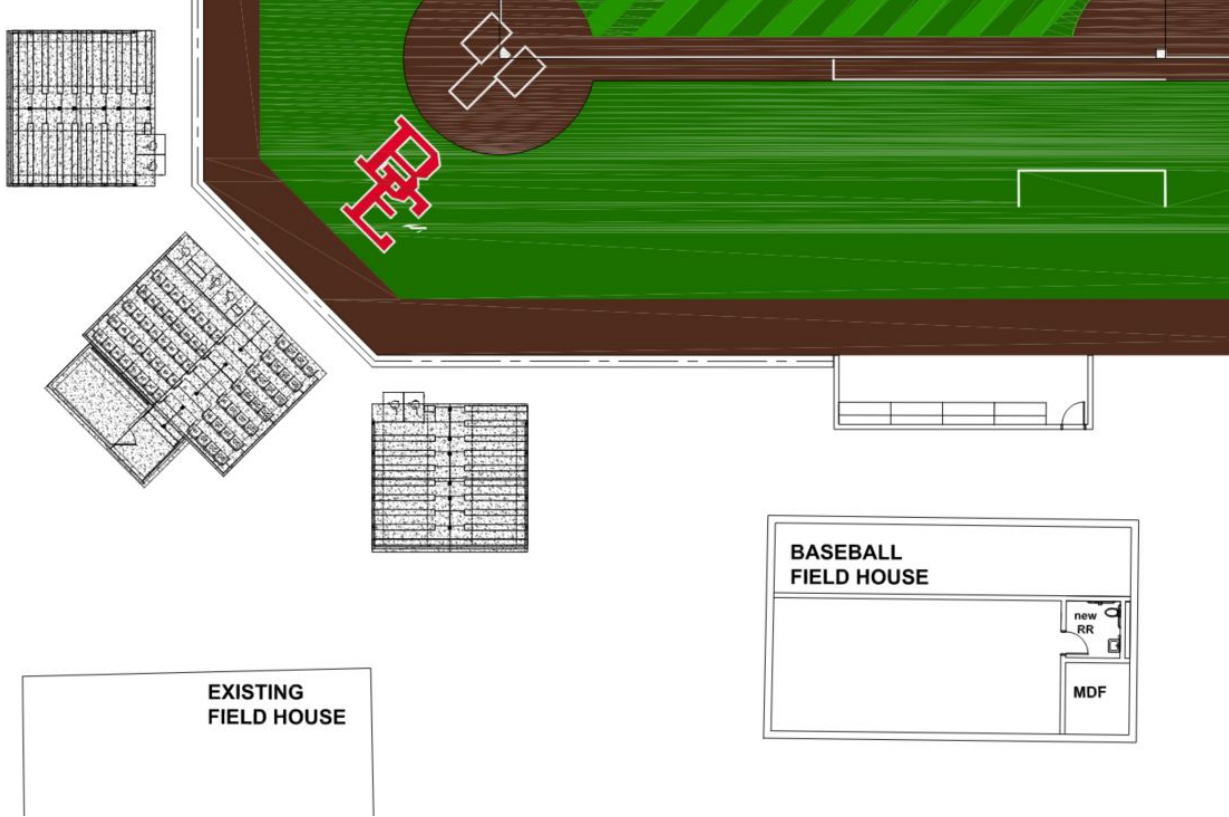
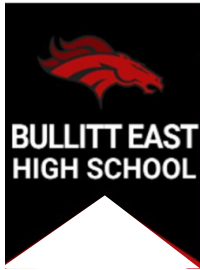
Phase 2 Athletics and Field Houses Construction Documents - Baseball and Softball





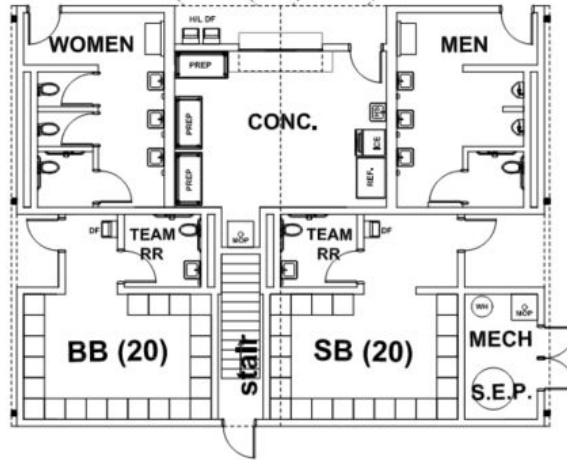
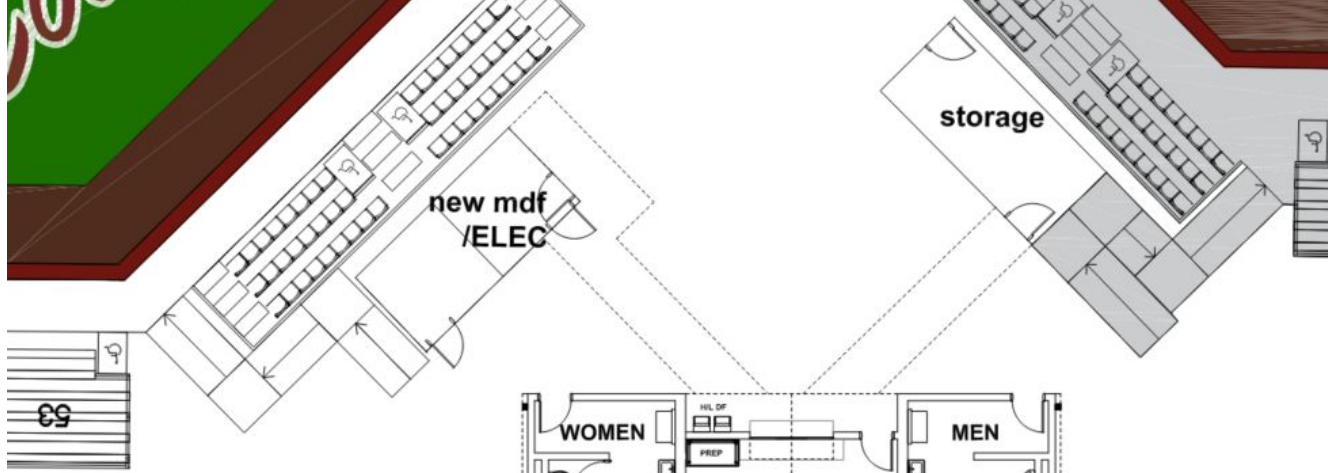
Phase 2 Athletics and Field Houses Construction Documents - Baseball and Softball





Phase 2 Athletics and Field Houses Construction Documents - Baseball and Softball





Phase 2 Athletics and Field Houses Construction Documents - Baseball and Softball



studio kremer architects



MOVING FORWARD



BULLITT CENTRAL
HIGH SCHOOL



Phase 2 Athletics and Field Houses
Construction Documents - Field Houses



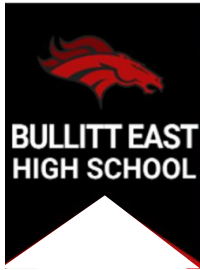


NORTH BULLITT
HIGH SCHOOL



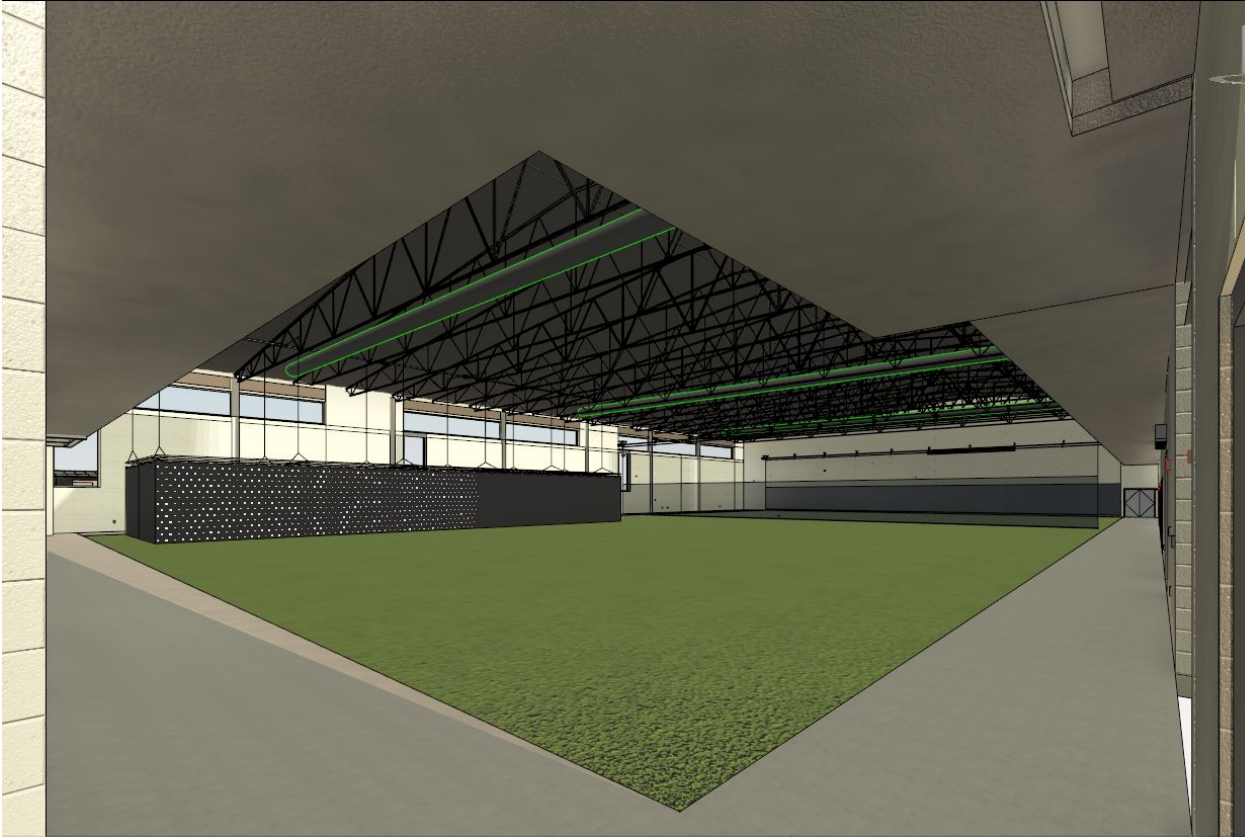
Phase 2 Athletics and Field Houses Construction Documents - Field Houses





Phase 2 Athletics and Field Houses Construction Documents - Field Houses





Phase 2 Athletics and Field Houses Construction Documents - Field Houses



Recommendation for splitting of Bid Packages

To increase bidding competition - we recommend that the baseball/softball fields and support buildings bid separate from the stadium and fieldhouses.

Documents will be prepared for **Bid June 19th** - we recommend at least a 4-week bid period, to make sure we encourage as much bidder participation as possible.

- **Baseball and Softball Fields being June 2024 with an anticipated completion February 2025, *Prior to the season starting. Field Construction would be staggered and take approximately two months each to complete. Motz and Toadvine have been briefed on the schedule and confirmed it is appropriate to deliver fields prior to the 2025 season starting.***
- **Field House Construction begins as soon as the 2024 Football/Soccer season is over with an anticipated completion 12-months later - priority would be given to completing the public restrooms, concessions and gateways.**



studio kremer architects

Phase 2 Athletics and Field Houses - **Bidding Recommendation**



MOVING FORWARD



studio kremer architects

Phase 2 Athletics and Field Houses



MOVING FORWARD